

**Northern Long-Eared Bat  
Presence/Absence Acoustic Surveys  
Crocker Wind Farm  
Clark County, South Dakota**

---

**Report  
July 22 – 27, 2016**



**Prepared for:**

Crocker Wind Farm, LLC  
7650 Edinborough Say, Suite 725  
Edina, South Dakota 55425

---

**Prepared by:**

**Joyce Pickle, Kevin Murray, Adam Kreger, and Rebecca Schmitt**

Western EcoSystems Technology, Inc.  
1710 Douglas Drive, Suite 283  
Golden Valley, South Dakota 55422

**October 21, 2016**



## **STUDY PARTICIPANTS**

### **Western EcoSystems Technology, Inc.**

Joyce Pickle	Project Manager
Kevin Murray	Acoustic Analyst, Senior Bat Biologist
Adam Kreger	Report Writer
Rebecca Schmitt	Technical Editor
Tim Sichmeller	Bat Biologist
Emily Griffiths	Acoustic Lead
Rebecca Kolstrom	Acoustic Technician
Kent Irwin	Acoustic Analyst

## **REPORT REFERENCE**

Pickle, J., K. Murray, A. Kreger, and R. Schmitt. 2016. Northern Long-Eared Bat Presence/Absence Acoustic Surveys, Crocker Wind Farm, Clark County, South Dakota. Report: July 22 – 27, 2016. Prepared for Crocker Wind Farm, LLC. Prepared by Western EcoSystems Technology, Inc. (WEST), Golden Valley, South Dakota.

## **TABLE OF CONTENTS**

BACKGROUND and project overview .....	1
METHODS .....	3
Desktop Habitat Assessment .....	3
Acoustic Surveys .....	6
RESULTS .....	6
Acoustical Analysis .....	6
DISCUSSION.....	8
LITERATURE CITED .....	9

## **LIST OF FIGURES**

Figure 1. Location of the Crocker Wind Farm in Clark County, South Dakota.....	2
Figure 2. Crocker Wind Farm Acoustic Sampling Sites in Clark County, South Dakota.....	4
Figure 3. Location of the Crocker Wind Farm Acoustic Detector Locations in Clark County, South Dakota.....	5

## **LIST OF TABLES**

Table 1. Location and site description of acoustic survey stations at the Crocker Wind Farm. ...	7
Table 2. Number of bat calls recorded at each acoustic survey station determined by Kaleidoscope for the Crocker Wind Farm. ....	7
Table 3. Summary of Kaleidoscope echolocation call identifications for the Crocker Wind Farm.....	8
Table 4. Summary of NLEB call identifications by Kaleidoscope and qualitative analysis <sup>1</sup> for stations with potential northern long-eared bat calls at the Crocker Wind Farm. ....	8
Table 5. Summary of actions at each acoustic survey station for the Crocker Wind Farm.....	8

## **LIST OF APPENDICES**

Appendix A. Crocker Wind Farm Acoustic Survey Station Photographs and Datasheets	
--	--

## BACKGROUND AND PROJECT OVERVIEW

Crocker Wind Farm, LLC, a wholly owned subsidiary of Geronimo Energy, LLC (Geronimo) is considering the development of the Crocker Wind Farm (Project) located in Clark County, South Dakota (Figure 1). Geronimo contracted Western EcoSystems Technology, Inc. (WEST) to conduct bat acoustic presence/probable absence surveys during summer 2016 to better understand the potential use of the Project during the summer months by the federally threatened northern long-eared bat (NLEB, *Myotis septentrionalis*). The primary objectives of the summer bat surveys were to: 1) collect site-specific information on bat use of the Project that will be useful in evaluating potential impacts to bats from the Project, and 2) collect site-specific information that can be used to evaluate risk to state and federally listed bat species with potential to occur in the Project to inform the need for further consultation with the South Dakota Department of Game Fish & Parks (SDGFP) and US Fish and Wildlife Service (USFWS) regarding these species. This report summarizes the results of the NLEB acoustic surveys completed for the Project during summer 2016.

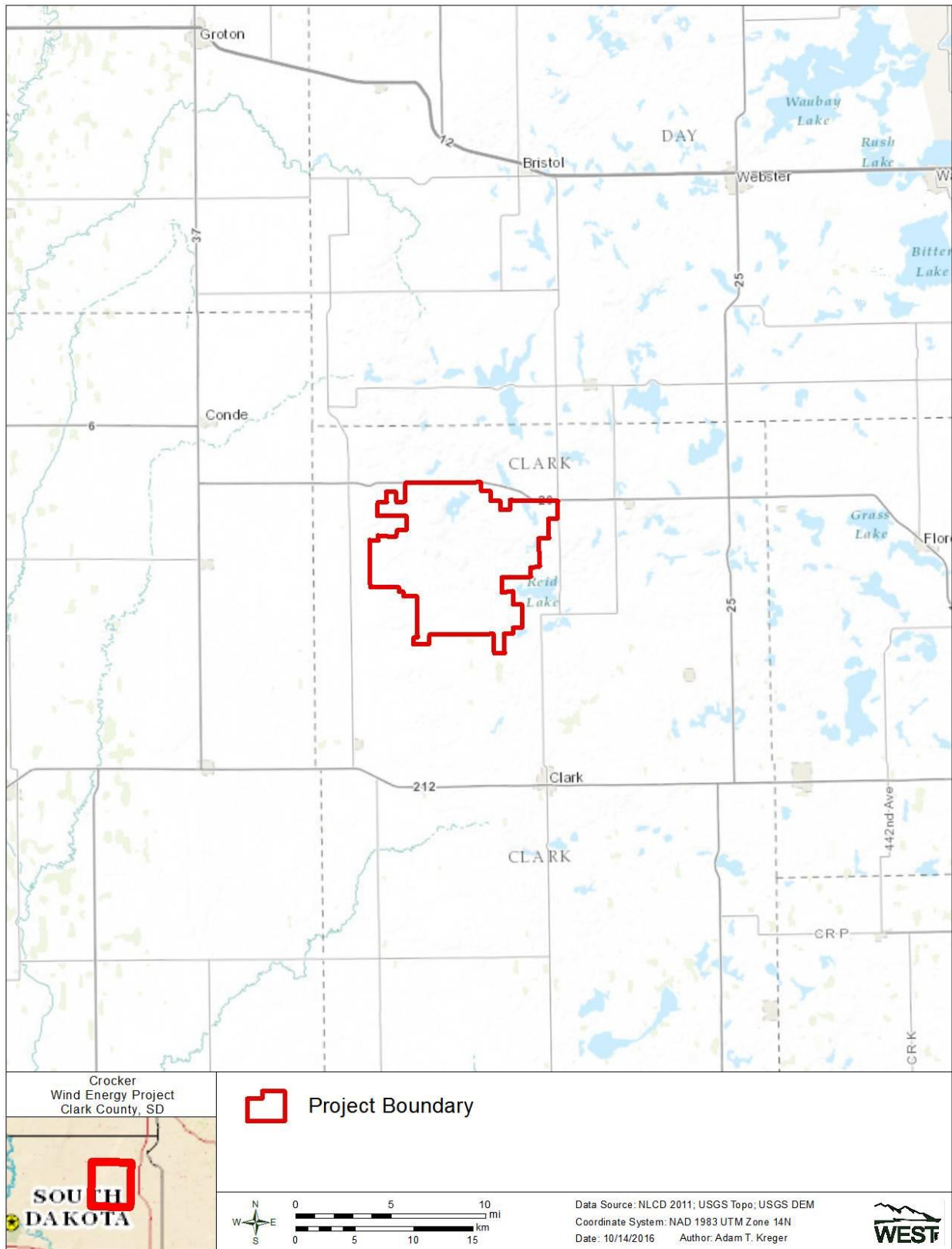


Figure 1. Location of the Crocker Wind Farm in Clark County, South Dakota.

## **METHODS**

The bat acoustic surveys followed the USFWS *2016 Range-Wide Indiana Bat Summer Survey Guidelines* (USFWS Guidelines, USFWS 2016), which are also applicable to NLEB, per the *Northern Long-Eared Bat Interim Conference and Planning Guidance* (USFWS 2014). The USFWS Guidelines recommend the following to assess the presence or probable absence of NLEB: 1) desktop habitat assessment, and 2) presence/probable absence surveys using acoustic detectors or mist-netting.

### **Desktop Habitat Assessment**

The USFWS Guidelines (USFWS 2016) define suitable habitat for NLEB as any forest (e.g., deciduous, coniferous, mixed) or forested landscape feature (e.g., woody wetlands, forested riparian areas, shelterbelts) and recommend sampling at least two detector locations for every 123 acre (ac; 0.50 square kilometers [km<sup>2</sup>]) site of suitable habitat within a non-linear project area for at least four detector nights. WEST conducted a desktop assessment of potential NLEB habitat within the Project. Overall, there are only 389 acres of wooded habitat throughout the Project, all of which are small (less than 15 acres) isolated patches associated with small wood lots or wind breaks. Connected NLEB foraging or roosting habitat within the Project is limited to the eastern margin of the Project (Figure 1), where shelterbelts and larger forested patches are separated by less than 1,000 feet (ft; 305 meters [m]). This connected habitat totals approximately 32.4 acres within the Project boundary, which are made up patches of less than 15 acres but within 1,000 ft of larger patches outside of the Project. In total, 2 acoustic survey sites with potential NLEB habitat were selected within the Project on leased lands (Figure 2).



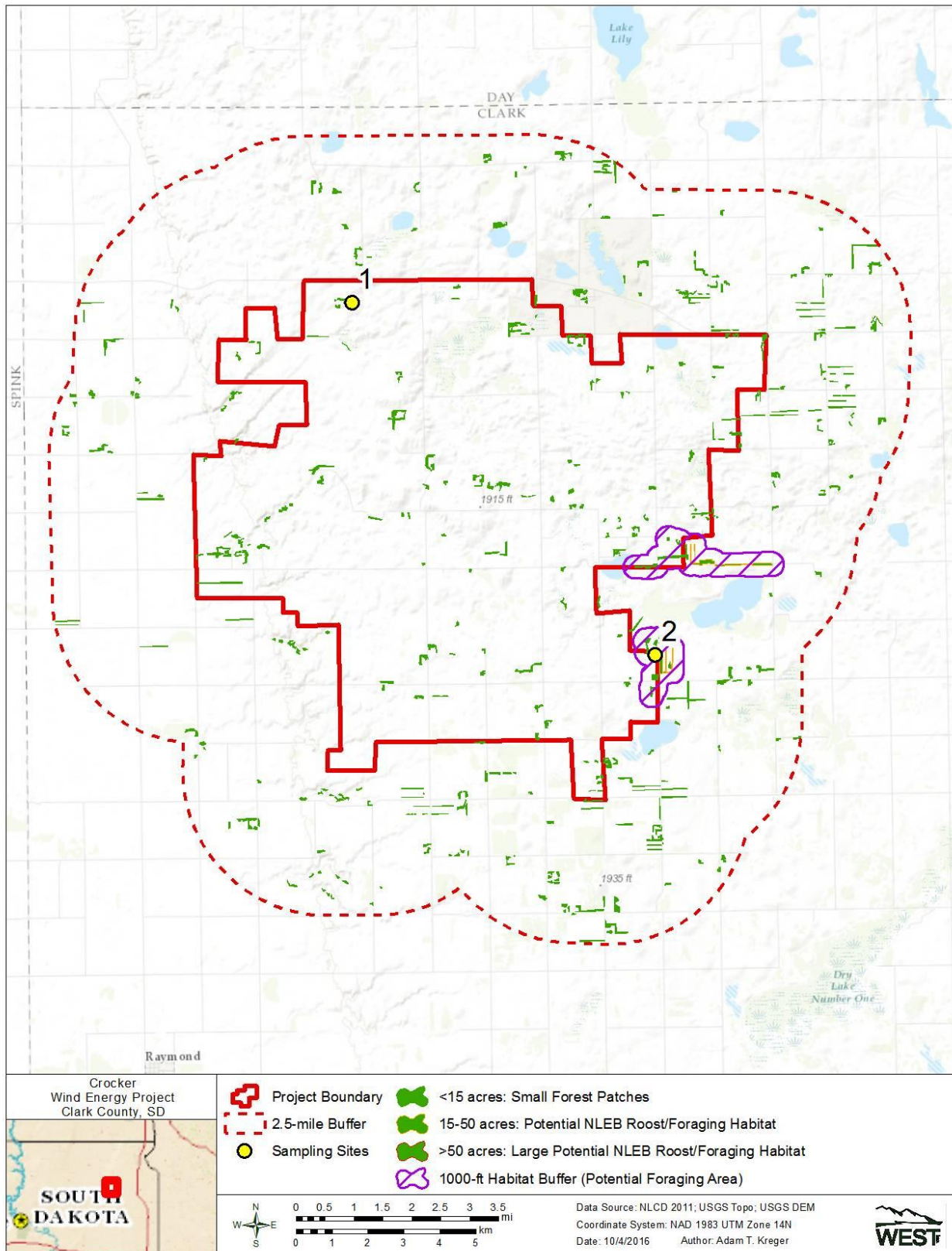


Figure 2. Crocker Wind Farm Acoustic Sampling Sites in Clark County, South Dakota.



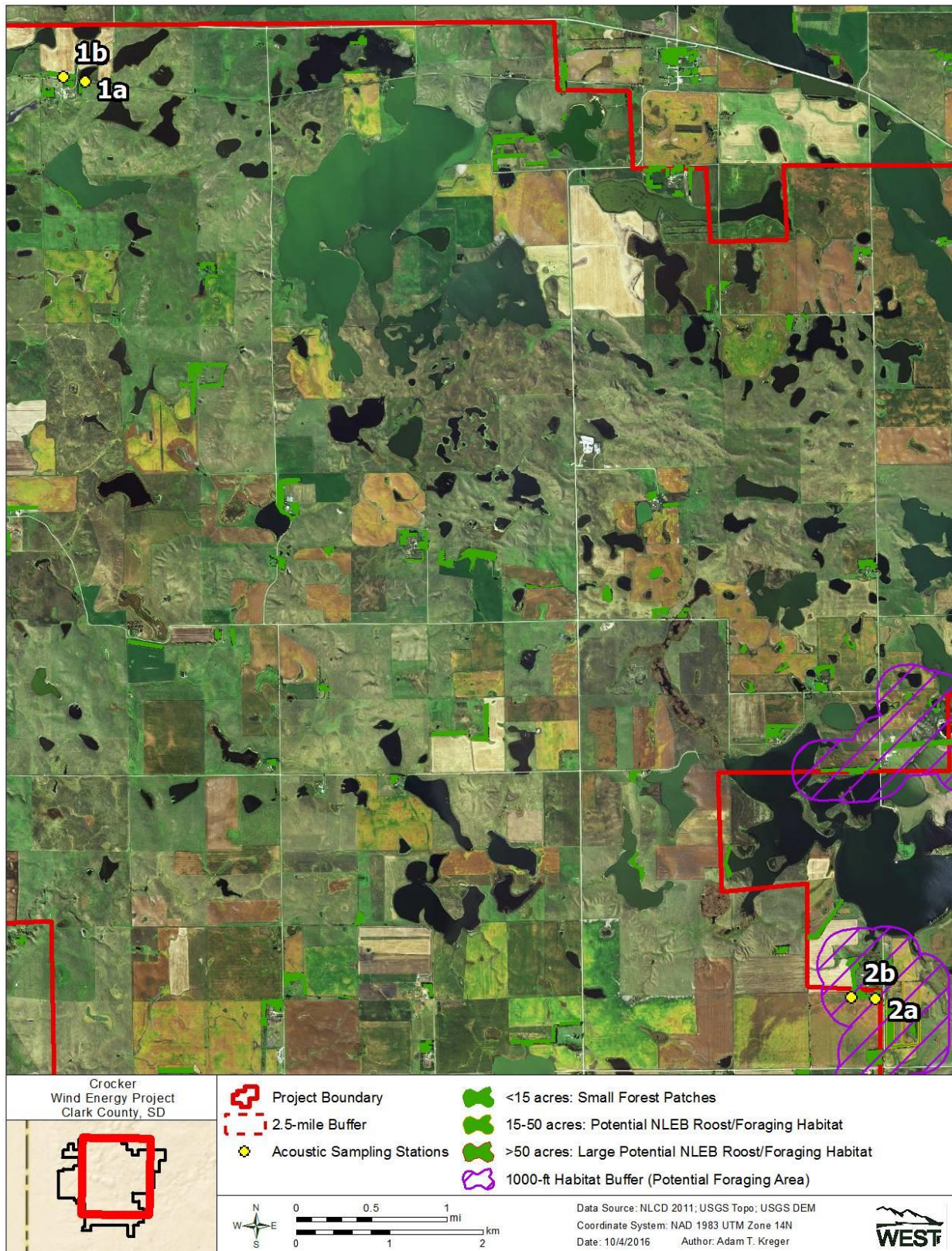


Figure 3. Location of the Crocker Wind Farm Acoustic Detector Locations in Clark County, South Dakota.



## **Acoustic Surveys**

Acoustic surveys were conducted from July 22 – 27, 2016, following USFWS Guidelines (USFWS 2016). Surveys were conducted at 2 sites with two detector locations (stations) at each site for a total of 4 acoustic survey stations. Each station was surveyed for at least two nights for a total of at 10 valid detector nights. Bats were surveyed using full spectrum Song Meter SM3 acoustic recorders (Wildlife Acoustics, Inc.). Acoustic survey sites were reviewed and approved by the USFWS prior to conducting surveys. WEST placed detectors in suitable habitat for NLEB, including forest edges, small clearings and forest-canopy openings, near water sources, and forested riparian edges. Detectors were placed in areas with open tree canopies or canopy heights greater than 33 ft (10 m) and were spaced at least 656 ft (200 m) apart. Detectors were elevated at least 9.8 ft. (3.0 m) above ground level (AGL) to minimize acoustic interference from vegetation. Detectors were programmed to record from sunset to sunrise each survey night.

Acoustic monitoring began before sunset and continued for the entire night. If weather conditions such as persistent rain (more than 30 minutes), strong sustained winds (greater than 9 miles per hour [mph] average for more than 30 minutes), or cold temperatures (below 10°C [50°F] for more than 30 minutes) occurred during the first five hours of a survey night, then that location was surveyed for an additional night unless target species were detected or bat activity was unaffected by weather conditions (USFWS 2016). For each acoustic survey location, the date, start and end time, site description, site coordinates, and weather data were recorded. Representative photographs of each acoustic survey station were taken.

Bat calls were quantitatively identified using the USFWS-approved Automated Acoustic Bat Identification Software Program (Kaleidoscope Pro, version 3.1.7, Wildlife Acoustics, Inc.). If the automated bat identification program identified calls as NLEB with a high degree of probability ( $p < 0.05$ ), then qualitative analysis was conducted to determine if NLEB were present or absent at the site. Qualitative echolocation call analysis was conducted by a biologist experienced with acoustic identification and who met required USFWS qualifications (Dr. Kevin Murray of WEST; USFWS 2016). If probable NLEB echolocation call sequences identified by Kaleidoscope were not characteristic of NLEB, contained distinct calls produced by species other than NLEB, or were of insufficient quality, they were reclassified. Per USFWS Guidelines (USFWS 2016), NLEB were considered present at sites with probable calls verified by qualitative analysis. NLEB were considered absent from sites with no probable NLEB calls or from sites with probable NLEB calls that were not verified by qualitative analysis.

## **RESULTS**

### **Acoustical Analysis**

Acoustic surveys were completed at 2 survey sites (4 survey stations) from July 22 – 27, 2016, for a total of 10 valid detector nights. UTM coordinates and site descriptions for each survey station are listed in Table 1. Photographs and datasheets with site descriptions are found in Appendix A.

**Table 1. Location and site description of acoustic survey stations at the Crocker Wind Farm.**

Site ID	Station ID	Easting†	Northing†	Site Description
1	A	589247	4995068	Open field with dirt road to the west and treed area to the south
1	B	589010	4995109	Grassy strip with tree-line to the north and drainage ditch to the south
2	A	597763	4985260	Grassy strip with corn field to south and east. Treed area to the north and west
2	B	597419	4985326	Grassy area at edge of corn fields lined with elm trees

† = NAD 1983, Zone 14

To assess study conditions for compliance with USFWS Guidelines (USFWS 2016), weather was monitored using the Kent weather station (KSDCLARK2) on Weather Underground's Wundermap (<http://www.wunderground.com/wundermap/>). Stations Cro-1a and Cro-1b were deployed on July 22 and retrieved on July 25. Weather conditions met USFWS criteria for these stations on the nights of July 22, July 23, and July 24. Stations Cro-2a and Cro-2b were deployed on July 25 and retrieved July 27. Weather conditions met USFWS criteria for these stations on the nights of July 25 and July 26. All data was included in the analysis from all deployments. Together, these 4 stations collected 10 nights of valid data, meeting the requirement of at least four detector nights per site.

Kaleidoscope identified a total of 736 bat call files and identified 722 files (98.1%) to species. Average number of bat calls per detector night was 72.2. Table 2 summarizes the number of detector nights, number of bat call files, and number of bat calls identified to species at each survey station. Table 3 provides information on species identifications for each survey station.

**Table 2. Number of bat calls recorded at each acoustic survey station determined by Kaleidoscope for the Crocker Wind Farm.**

Acoustic Survey Site	Survey Station	ID program	Total Bat Calls	Calls Identified	Detector Nights	Bat Calls/ Detector Night
1	A	Kaleidoscope	37	36	3	12
	B	Kaleidoscope	61	61	3	20.3
2	A	Kaleidoscope	232	229	2	114.5
	B	Kaleidoscope	38	35	2	17.5
<b>Total</b>			<b>736</b>	<b>722</b>	<b>10</b>	<b>72.2</b>

**Table 3. Summary of Kaleidoscope echolocation call identifications for the Crocker Wind Farm.**

Site ID	Station ID	EPFU <sup>1</sup>	LABO	LACI	LANO	MYLU	MYSE	UNK	Total
1	A	10	22	0	4	0	0	1	37
1	B	13	24	8	14	2	0	0	61
2	A	12	200	4	10	3	0	3	232
2	B	3	21	6	2	1	2	3	38
<b>Total</b>		<b>76</b>	<b>534</b>	<b>36</b>	<b>60</b>	<b>12</b>	<b>4</b>	<b>14</b>	<b>736</b>

<sup>1</sup> EPFU = Big Brown Bat; LABO = Eastern Red Bat; LACI = Hoary Bat; LANO = Silver-haired Bat; MYLU = Little Brown Bat; MYSE = Northern Long-eared Bat; PESU = Tri-colored bat; UNK = Unknown.

Based on the screening done by the call identification programs, station Cro-2b recorded potential NLEB calls with a p-value < 0.05 for the maximum-likelihood estimation (Table 4). Qualitative analysis did not verify the presence of NLEB at any survey stations (Tables 4 and 5).

**Table 4. Summary of NLEB call identifications by Kaleidoscope and qualitative analysis<sup>1</sup> for stations with potential northern long-eared bat calls at the Crocker Wind Farm.**

Site ID	Station ID	Date	Identification Method	MYSE (NLEB)
2	B	July 26, 2016	Kaleidoscope	2
			Qualitative	0

<sup>1</sup> Only calls with p-values < 0.05 for the maximum-likelihood estimation were included in qualitative analysis (USFWS 2016).

**Table 5. Summary of actions at each acoustic survey station for the Crocker Wind Farm.**

Site	Station ID	NLEB Calls	Probable NLEB Calls (P < 0.05)	NLEB Qualitatively Verified	Recommended Action
1	A	0	No	No	no further action
1	B	0	No	No	no further action
2	A	0	No	No	no further action
2	B	2	Yes	No	no further action

## DISCUSSION

Limited information is available on NLEB migratory pathways and behaviors. While there is some information suggesting this species tends to follow forested areas and avoid open areas if possible, these bats may occasionally move through non-forested areas.

If these bats occur in the Project area during the summer months, they will likely occur within or near (within 1,000 ft [305 m]) suitable wooded habitat patches. WEST conducted acoustical surveys for NLEB at two sites in areas of suitable habitat within the Crocker Wind Farm.

NLEB was not qualitatively verified at any of the four acoustic stations at the two surveyed sites. Therefore this species is considered likely absent from the proposed Project. Surveys are

considered complete for all four survey stations at the two sites, and no further action is recommended to confirm NLEB bat absence pursuant to USFWS *Northern Long-eared Bat Interim Conference and Planning Guidance* (USFWS 2014) and *2016 Range-Wide Indiana Bat Summer Survey Guidelines* (USFWS 2016).

## **LITERATURE CITED**

- U.S. Fish and Wildlife Service (USFWS). 2014. Northern Long-eared Bat Interim Conference and Planning Guidance. January 6, 2014. USFWS Regions 2, 3, 4, 5, & 6. Available online at: <http://www.fws.gov/northeast/virginiafield/pdf/NLEBinterimGuidance6Jan2014.pdf>
- U.S. Fish and Wildlife Service (USFWS). 2016. 2016 Range-Wide Indiana Bat Summer Survey Guidelines (April 2016). USFWS Endangered Species Program: Midwest Region.



## **Appendix A. Crocker Wind Farm Acoustic Survey Station Photographs and Datasheets**

## **Acoustic Detector Station Cro-1a**



**Station Cro-1a Location**



**Station Cro-1a Orientation**



**Station Cro-1a Detection Cone**



# Acoustic Presence/Probable Absence 2016 Form

Project: Crocker

Station ID: 1a

Start Date/Time (military): 20160722 1925

End Date/Time: 20160725 1734

Observer(s): ETG BLK

## Station Information:

County: Clark State: SD

Datum: NAD27 Zone: 14T Easting: (6 digits) 589247 Northing: (7 digits) 4995068

Detector Type: SM2+ Detector Serial #: 65531 Tablet Location\*: 1

Detector Housing: Ammo Box Toolbox Plastic Tote Other: N/A

Battery source: Internal External If External: volts amp/hrs

## Microphone

Mic Serial#\* 2699 Mic Ht (m): (from ground) 3.048 Mic Channel\* R Audio Div\* 1 Data Div\* 1

Mic Horizontal Orientation: 263 Mic Vertical Orientation: 22 Sound Reception: None Horn Bat Hat PVC Elbow

## All Detector Checklist

Date/Time	Battery Voltage	Mic Check Good? Y/N	Cables, detector housing, mic holder Good?	Data Card(s) Replaced?	Battery Changed?	Sensitivity Setting (normally 6)	Test Indicators (checkmark)	Volume (lowest setting) Yes/No	LED Lights (circle) (should be Standby unless between 1800 and 1830hrs)	Comments (e.g., detector set, detector picked up, moved, knocked over, vandalized, etc.)
20160722 1927	6.52	✓	✓	✓	✓		"Data" lit Static Heard		Record Status Data	Standby Error
20160725 0539	5.46						"Data" lit Static Heard		Record Status Data	Standby Error
							"Data" lit Static Heard		Record Status Data	Standby Error
							"Data" lit Static Heard		Record Status Data	Standby Error

## Habitat Description (within 100m)

% Forested: 10 % Open/Ag: 90 % Water: 0 Dominant Tree Spp: E. Cotton Wood + Siberian Elm

Stand Age: Young Mature Old

## Detector Sampling (circle 1 or more):

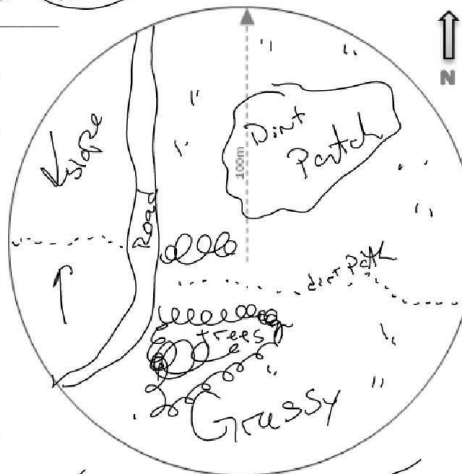
Creek Riparian Pond Bottomland Forest Upland Forest Field Edge Open Field

Cave Entrance Mine Portal Bridge Structure Other: \_\_\_\_\_

Topography: Flat Slope High Point Low Point Other: \_\_\_\_\_

Habitat Description: Map out habitat features within 100 m radius of Song Meter (x). Indicate direction of microphone using an arrow, include any features of interest (water, buildings, rocky outcrops, etc.). Provide a written description in the space below, including details on width of the road/trail/cutline, size of pond/lake, distance to nearest water, etc.).

Detector is on the north side of a dirt road leading to open grassy fields. Directly to the North is a dried dirt patch, perhaps an old pond. To the west is a corridor created by trees lining the dirt road. The trees extend a bit to the south. Mostly open field. To the far west is an access road which leads to farm houses.



## Photos (check)

Detector Location ✓  
(detector + main habitat surveyed)

Detector Orientation ✓  
(detector + surrounding habitat)

Detection Cone ✓  
(air space sampled)



## **Acoustic Detector Station Cro-1b**



**Station Cro-1b Location**



**Station Cro-1b Orientation**



**Station Cro-1b Detection Cone**



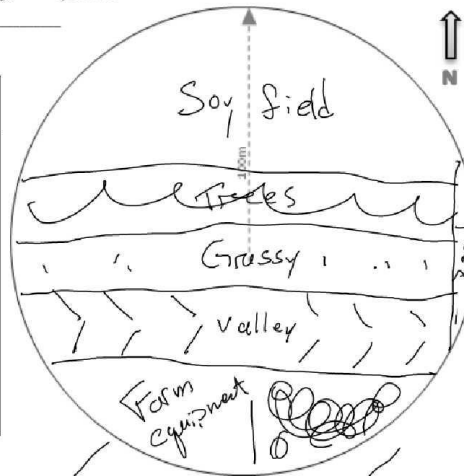
**Acoustic Presence/Probable Absence 2016 Form**Project: CrockerStation ID: 1bStart Date/Time (military): 20160722 1503End Date/Time: 20160726 1726Observer(s): ETG BLK**Station Information:**County: Clark State: SDDatum: NAD83 Zone: 14T Easting: (6 digits) 589010 Northing: (7 digits) 4995109Detector Type: SM2+ Detector Serial #: 1584 Tablet Location\*: 1Detector Housing: Ammo Box Toolbox Plastic Tote Other: N/ABattery source: Internal External If External: \_\_\_\_\_ volts \_\_\_\_\_ amp/hrs**Microphone**Mic Serial#\* 2736 Mic Ht (m): (from ground) 3.048 Mic Channel\* R Audio Div\* 1 Data Div\* 1Mic Horizontal Orientation: 270 Mic Vertical Orientation: 24 Sound Reception: None Horn Bat Hat PVC Elbow

All Detector Checklist						Anabat Only			
Date/Time	Battery Voltage	Mic Check Good? Y/N	Cables, detector housing, mic holder Good?	Data Card(s) Replaced?	Battery Changed?	Sensitivity Setting (normally 6)	Test Indicators (checkmark)	Volume (lowest setting) Yes/No	LED Lights (circle) (should be Standby unless between 1800 and 2800Hz)
20160722 1504	6.46	✓	✓	✓	✓		"Data" lit Static Heard		Record Status Data Standby Error
20160725 1733	5.44						"Data" lit Static Heard		Record Status Data Standby Error
							"Data" lit Static Heard		Record Status Data Standby Error
							"Data" lit Static Heard		Record Status Data Standby Error

**Habitat Description (within 100m)**% Forested: 25 % Open/Ag: 75 % Water: 0 Dominant Tree Spp: Ponderosa Pine (Best guess w/ 1 tree app)**Stand Age:** Young Mature Old**Detector Sampling (circle 1 or more):**Creek Riparian Pond Bottomland Forest Upland Forest Field Edge Open FieldCave Entrance Mine Portal Bridge Structure Other: \_\_\_\_\_**Topography:** Flat Slope High Point Low Point Other: \_\_\_\_\_

**Habitat Description:** Map out habitat features within 100 m radius of Song Meter (x). Indicate direction of microphone using an arrow, include any features of interest (water, buildings, rocky outcrops, etc.). Provide a written description in the space below, including details on width of the road/trail/cutline, size of pond/lake, distance to nearest water, etc.).

Detector is between a line of pine trees to the north and a man-made valley to the south (~20m deep). To the north is a soy bean field. To the south is a farm. To the far east is an access road. Detector is facing west along the tree line.

**Photos (check)**

Detector Location  
(detector + main habitat surveyed)

Detector Orientation  
(detector + surrounding habitat)

Detection Cone  
(air space sampled)

## **Acoustic Detector Station Cro-2a**



**Station Cro-2a Location**



**Station Cro-2a Orientation**

# Acoustic Presence/Probable Absence 2016 Form



Project: Crocker  
 Start Date/Time (military): 20160725 1611  
 Observer(s): ETG BLK

Station ID: 2a  
 End Date/Time: 20160727 0931

SD  
 A → 18  
 B → W 620

Station Information:  
 County: Clark State: SD  
 Datum: NAD27 Zone: 14T Easting: (6 digits) 597763 Northing: (7 digits) 4985260  
 Detector Type: SM3 Detector Serial #: 302518 Tablet Location\*: 1  
 Detector Housing: Internal Ammo Box Toolbox Plastic Box Other:             
 Battery source: Internal External If External:            volts            amp/hrs

Microphone  
 Mic Serial#\* 0532 Mic Ht (m): (from ground) 3.048 Mic Channel\* R Audio Div\* 1 Data Div\* 1  
 Mic Horizontal Orientation: 255 Mic Vertical Orientation: 23 Sound Reception: None Horn Bat Hat PVC Elbow

All Detector Checklist						Anabat Only			
Date/Time	Battery Voltage	Mic Check Good? Y/N	Cables, detector housing, mic holder Good?	Data Card(s) Replaced?	Battery Changed?	Sensitivity Setting (normally 6)	Test Indicators (checkmark)	Volume (lowest setting) Yes/No	LED Lights (circle) (should be Standby unless between 1800 and 1830hrs)
20160725 1616	6.5	✓	✓	✓	✓		"Data" lit Static Heard		Record Status Data Standby Error
20160727 0931	5.6						"Data" lit Static Heard		Record Status Data Standby Error
							"Data" lit Static Heard		Record Status Data Standby Error
							"Data" lit Static Heard		Record Status Data Standby Error

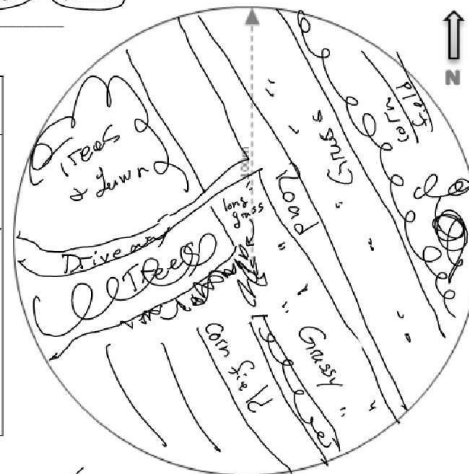
Habitat Description (within 100m)  
 % Forested: 15 % Open/Ag: 85 % Water: 0 Dominant Tree Spp: Elm

Stand Age: Young Mature Old  
 Detector Sampling (circle 1 or more):  
 Creek Riparian Pond Bottomland Forest Upland Forest Field Edge Open Field  
 Cave Entrance Mine Portal Bridge Structure Other:           

Topography: Flat Slope High Point Low Point Other:           

Habitat Description: Map out habitat features within 100 m radius of Song Meter (x). Indicate direction of microphone using an arrow, include any features of interest (water, buildings, rocky outcrops, etc.). Provide a written description in the space below, including details on width of the road/trail/cutline, size of pond/lake, distance to nearest water, etc.).

Detector is at the edge of a corn field, to the west & southwest. Directly east is a road, trees and another corn field. The road travels N-S. To the NW is a driveway leading to a home.



Photos (check) ✓  
 Detector Location             
 (detector + main habitat surveyed)

Detector Orientation             
 (detector + surrounding habitat)

Detection Cone             
 (air space sampled)



## **Acoustic Detector Station Cro-2b**



**Station Cro-2b Location**



**Station Cro-2b Orientation**



**Station Cro-2b Detection Cone**



**Acoustic Presence/Probable Absence 2016 Form**

**Project:** Crocker  
**Start Date/Time (military):** 20160725 1636  
**Observer(s):** ETG BLK

**Station ID:** 2b  
**End Date/Time:** 20160727 0918

**Station Information:**

**County:** Clark **State:** SD  
**Datum:** NAD27 **Zone:** 14T **Easting: (6 digits)** 597419 **Northing: (7 digits)** 4995326  
**Detector Type:** SM2+ **Detector Serial #:** 16823 **Tablet Location\*:** 1  
**Detector Housing:** Ammo Box Toolbox Plastic Tote Other: N/A  
**Battery source:** Internal External **If External:** \_\_\_\_\_ volts \_\_\_\_\_ amp/hrs

**Microphone**

**Mic Serial#\*** 2744 **Mic Ht (m): (from ground)** 3.048 **Mic Channel\*** R **Audio Div\*** 1 **Data Div\*** 1  
**Mic Horizontal Orientation:** 162 **Mic Vertical Orientation:** 22 **Sound Reception:** Noise Horn Bat Hat PVC Elbow

**All Detector Checklist**

Date/Time	Battery Voltage	Mic Check Good? Y/N	Cables; detector housing; mic holder Good?	Data Card(s) Replaced?	Battery Changed?	Sensitivity Setting (normally 6)	Test Indicators (checkmark)	Volume (lowest setting) Yes/No	LED Lights (circle) (should be Standby unless between 1800 and 2800Hz)	Comments (e.g., detector set, detector picked up, moved, knocked over, vandalized, etc.)
20160725 1639	6.44	✓	✓	✓	✓		"Data" lit Static Heard		Record Status Data	Standby Error
20160727 0928	5.51						"Data" lit Static Heard		Record Status Data	Standby Error
							"Data" lit Static Heard		Record Status Data	Standby Error
							"Data" lit Static Heard		Record Status Data	Standby Error

**Anabat Only****Habitat Description (within 100m)**

**% Forested:** 20 **% Open/Ag:** 50 **% Water:** \_\_\_\_\_ **Dominant Tree Spp:** Elm

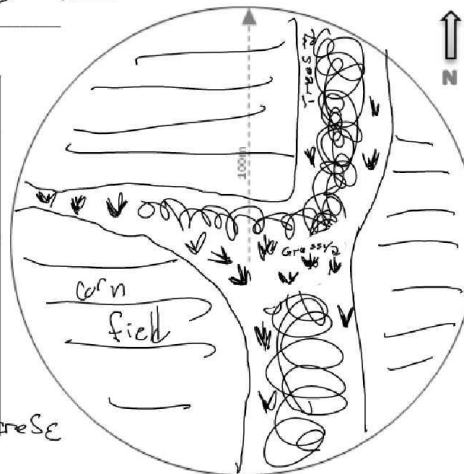
**Stand Age:** Young Mature Old**Detector Sampling (circle 1 or more):**

Creek Riparian Pond Bottomland Forest Upland Forest Field Edge Open Field  
Cave Entrance Mine Portal Bridge Structure Other: \_\_\_\_\_

**Topography:** Flat Slope High Point Low Point Other: \_\_\_\_\_

**Habitat Description:** Map out habitat features within 100 m radius of Song Meter (x). Indicate direction of microphone using an arrow, include any features of interest (water, buildings, rocky outcrops, etc.). Provide a written description in the space below, including details on width of the road/trail/cutline, size of pond/lake, distance to nearest water, etc.).

Detector is sandwiched between 3 corn fields lined by Elm trees. At the intersection the grass is waist height, and it borders all of the fields. One field is SW, one is N + NW, and the other is to the east. Trees also line these borders, but they are the most dense to the SE. Also dead trees are SE

**Photos (check)**

**Detector Location** ✓  
 (detector + main habitat surveyed)

**Detector Orientation** ✓  
 (detector + surrounding habitat)

**Detection Cone** ✓  
 (air space sampled)