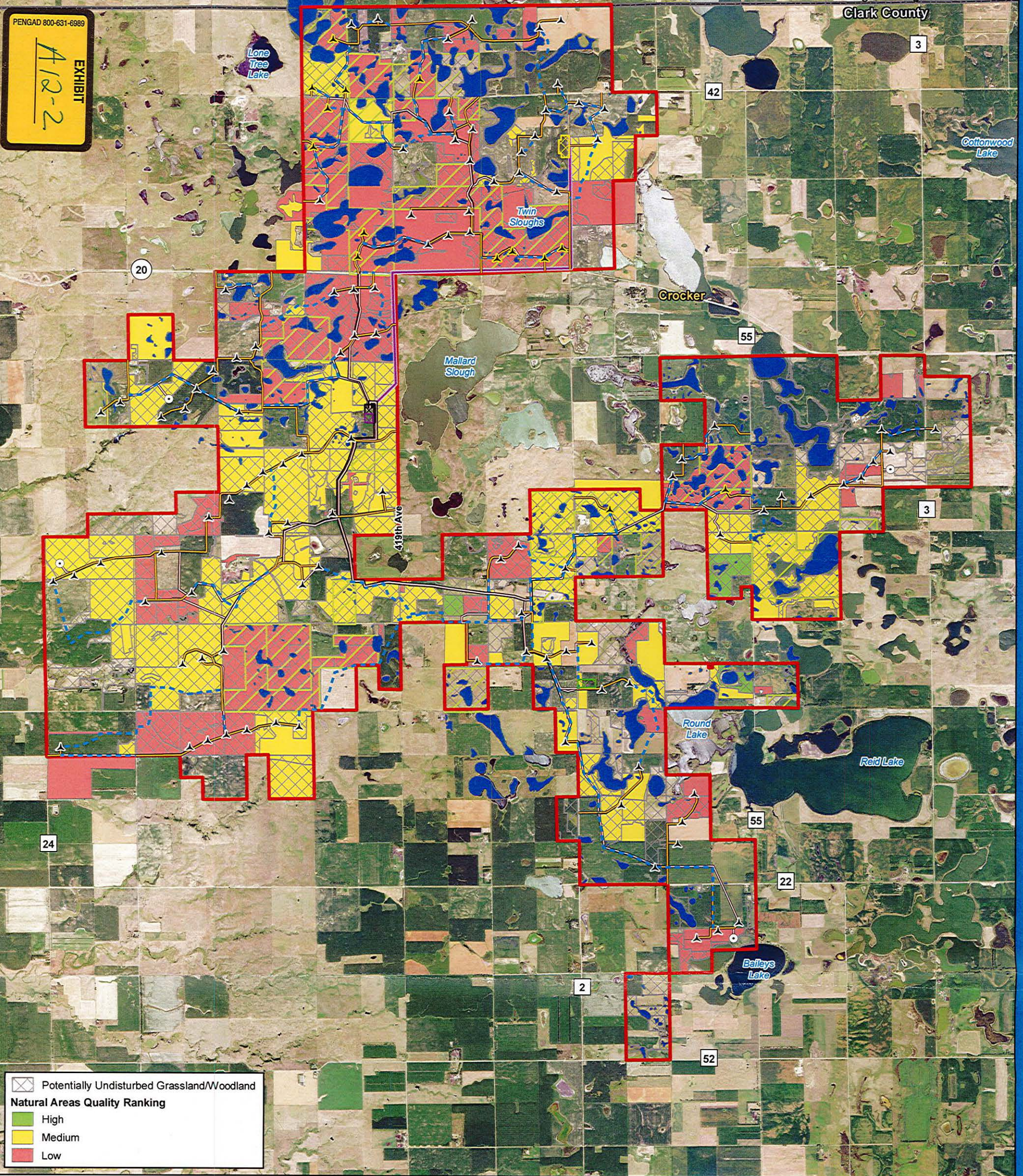


PENGAD 800-631-6989

EXHIBIT
A12-2



0 0.5 1 2
Miles

Imagery Source: 2015 Color FSA
Data Source: Geronimo Energy, US Census, SD DOT

Exhibit 2 Potentially Undisturbed Lands

Crocker Wind Farm
Clark County, SD

45.079602, -97.845696

- Preliminary Turbine Location (Grassland Easement)
- Preliminary Turbine Location
- Preliminary Permanent Met Tower
- Project Area Boundary
- Project Substation
- O&M Facility
- Interconnect Switchyard
- Preliminary Staging Area
- Interconnection 345 kV Transmission Line
- Preliminary Access Road
- Preliminary Collection Line
- Preliminary Crane Path
- USFWS Grassland Easement
- USFWS Protected Basin