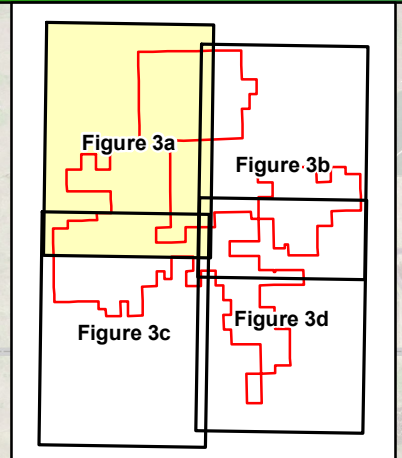


- ✚ Cemetery
- Participating Residential Structures
- Non-Participating Residential Structures
- Microwave Beam Path
- Transmission
- Pipeline
- Private Airstrip

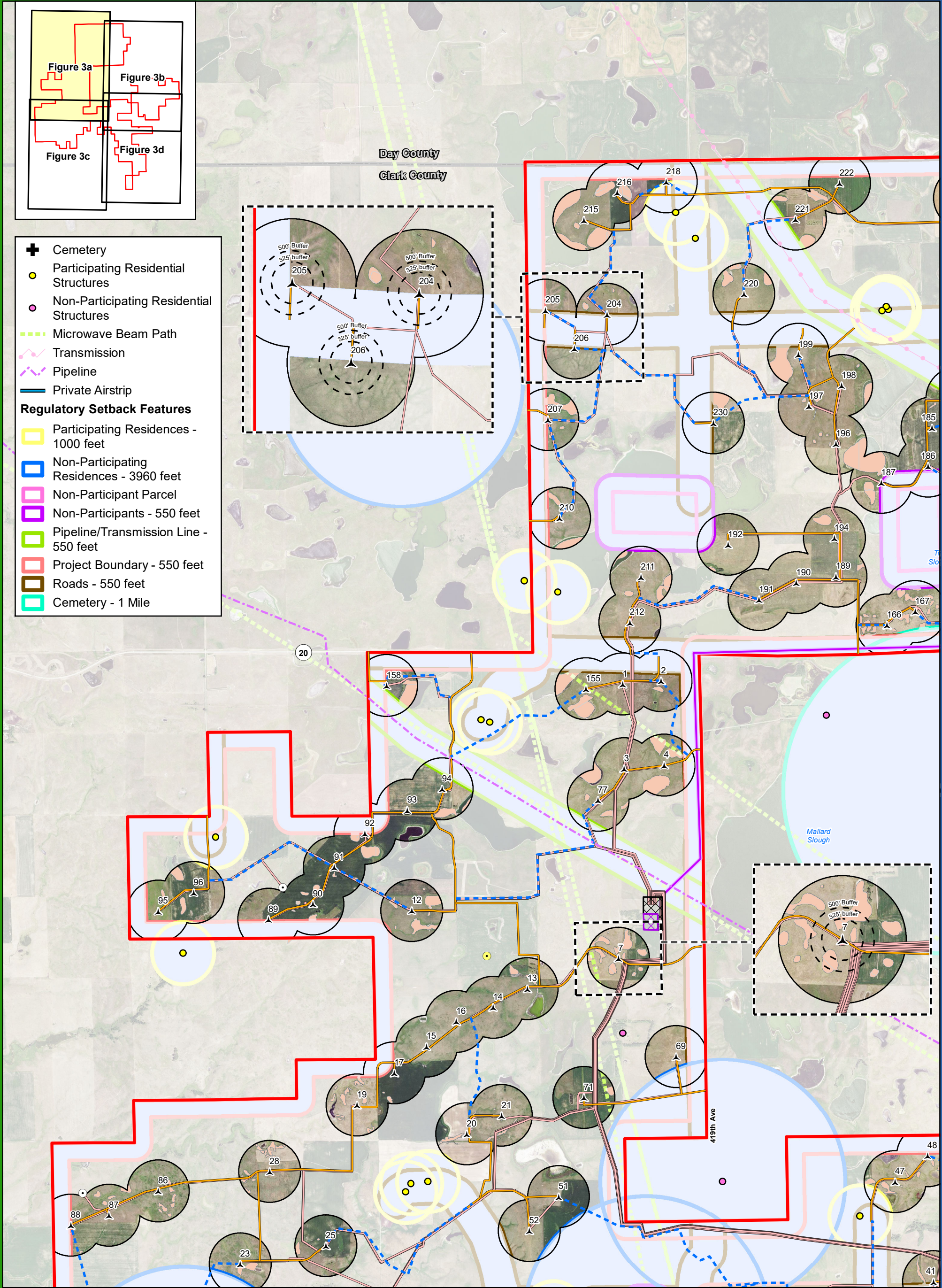
**Figure 3**  
**Project Micrositing**  
**Crocker Wind Farm**  
**Clark County, SD**  
**45.079602, -97.845696**

- ▲ Preliminary Turbine Location
  - Preliminary Permanent Met Tower
  - Temporary Met Tower
  - ▭ Project Area Boundary
  - ▭ Project Substation
  - ▭ O&M Facility
  - ▭ Interconnect Switchyard
  - ▭ Preliminary Staging Area
  - Interconnection 345 kV Transmission Line
  - Preliminary Access Road
  - Preliminary Collection Line
  - Preliminary Crane Path
  - 1000 ft Micrositing Area
  - Setbacks
  - Environmental Avoidance Area
- Note:  
 1. Turbines not drawn to scale.  
 2. Turbine numbering is not sequential.  
 3. Any turbine shifts within 1,000 feet will comply with 50 dBA noise setback and 30 hours per year shadow flicker guideline.  
 4. Cultural Resource data is not included.

Imagery Source: 2015 Color FSA  
 Data Source: Geronimo Energy, MN DNR, USFWS, Census, Comsearch



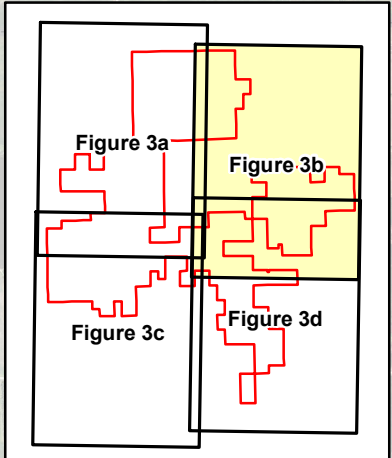
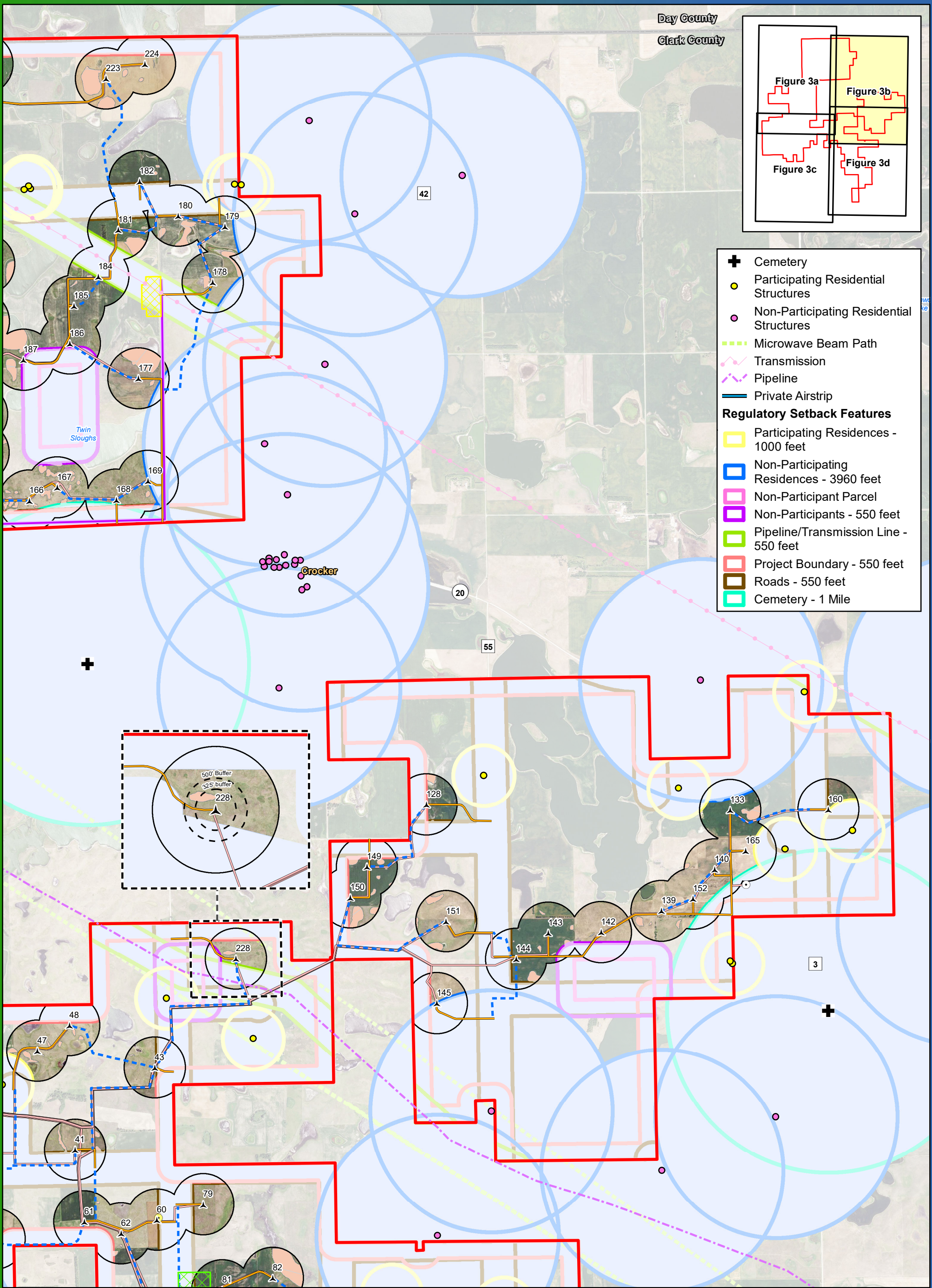
- ✚ Cemetery
  - Participating Residential Structures
  - Non-Participating Residential Structures
  - Microwave Beam Path
  - Transmission
  - Pipeline
  - Private Airstrip
- Regulatory Setback Features**
- Participating Residences - 1000 feet
  - Non-Participating Residences - 3960 feet
  - Non-Participant Parcel
  - Non-Participants - 550 feet
  - Pipeline/Transmission Line - 550 feet
  - Project Boundary - 550 feet
  - Roads - 550 feet
  - Cemetery - 1 Mile



0 0.3 0.6 1.2  
Miles

**Figure 3a**  
**Project Micrositing (Detailed)**  
**Crocker Wind Farm**  
**Clark County, SD**  
**45.079602, -97.845696**

- ▲ Turbine Location
  - Preliminary Permanent Met Tower
  - Temporary Met Tower
  - Project Area Boundary
  - Project Substation
  - O&M Facility
  - Interconnect Switchyard
  - Preliminary Staging Area
  - Interconnection 345 kV Transmission Line
  - Preliminary Access Road
  - Preliminary Collection Line
  - Preliminary Crane Path
  - 1000 ft Micrositing Area
  - Setbacks
  - Environmental Avoidance Area
- Note:  
1. Turbines not drawn to scale.  
2. Turbine numbering is not sequential.  
3. Any turbine shifts within 1,000 feet will comply with 50 dBA noise setback and 30 hours per year shadow flicker guideline.  
4. Cultural Resource data is not included.



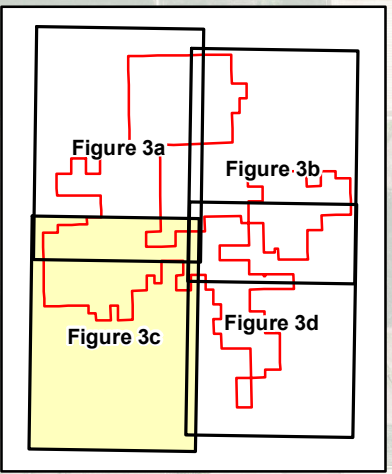
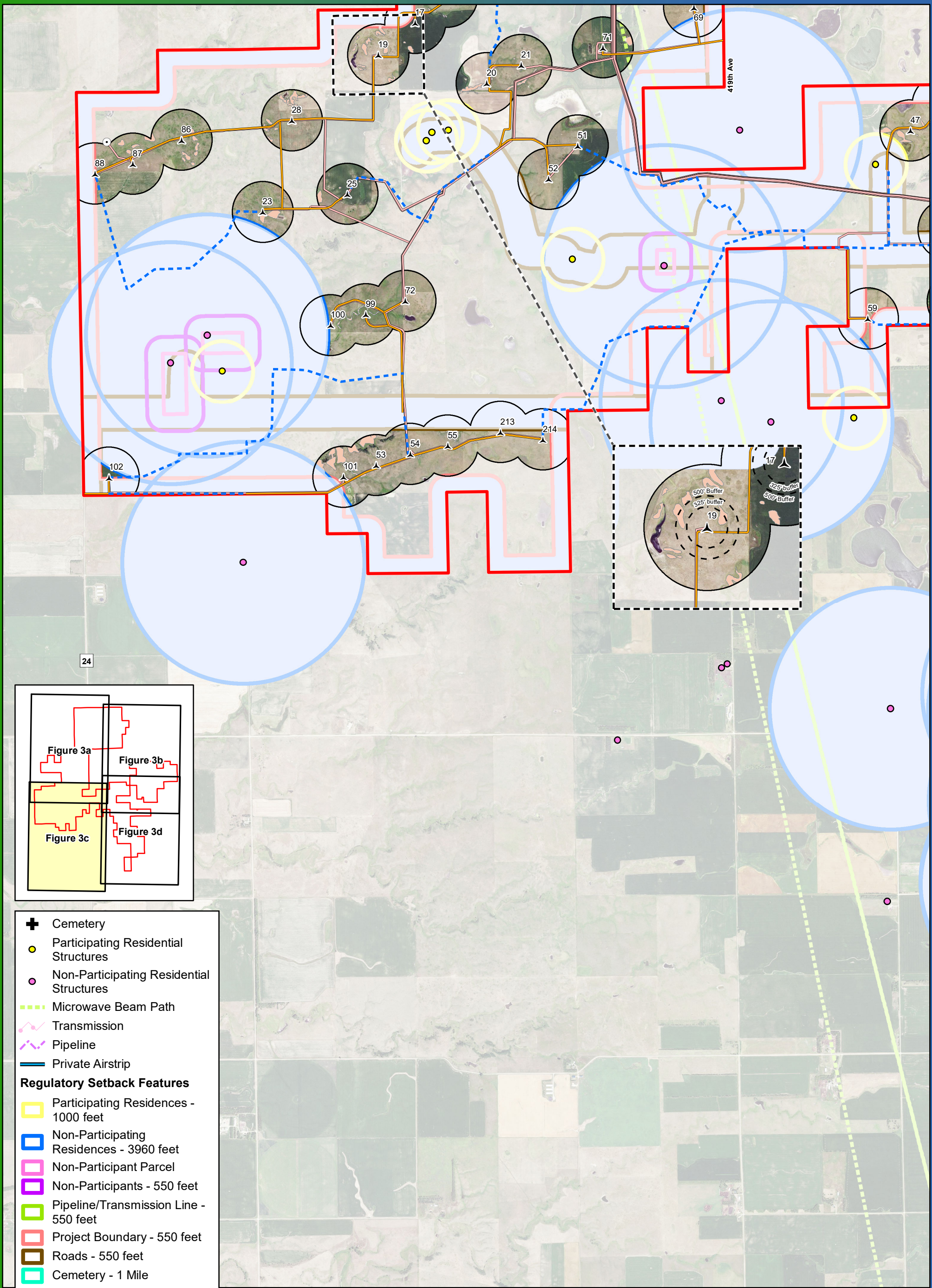
- ✚ Cemetery
- Participating Residential Structures
- Non-Participating Residential Structures
- Microwave Beam Path
- Transmission
- Pipeline
- Private Airstrip
- Regulatory Setback Features**
- Participating Residences - 1000 feet
- Non-Participating Residences - 3960 feet
- Non-Participant Parcel
- Non-Participants - 550 feet
- Pipeline/Transmission Line - 550 feet
- Project Boundary - 550 feet
- Roads - 550 feet
- Cemetery - 1 Mile

Miles

**Figure 3b**  
**Project Micrositing (Detailed)**

**Crocker Wind Farm**  
**Clark County, SD**  
**45.079602, -97.845696**

- ▲ Turbine Location
  - Preliminary Permanent Met Tower
  - Temporary Met Tower
  - Project Area Boundary
  - ▣ Project Substation
  - ▣ O&M Facility
  - ▣ Interconnect Switchyard
  - ▣ Preliminary Staging Area
  - Interconnection 345 kV Transmission Line
  - Preliminary Access Road
  - Preliminary Collection Line
  - Preliminary Crane Path
  - 1000 ft Micrositing Area
  - Setbacks
  - Environmental Avoidance Area
- Note:  
 1. Turbines not drawn to scale.  
 2. Turbine numbering is not sequential.  
 3. Any turbine shifting within 1,000 feet will comply with 50 dBA noise setback and 30 hours per year shadow flicker guideline.  
 4. Cultural Resource data is not included.



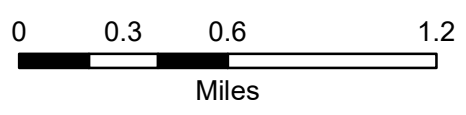
- ✚ Cemetery
  - Participating Residential Structures
  - Non-Participating Residential Structures
  - Microwave Beam Path
  - Transmission
  - Pipeline
  - Private Airstrip
- Regulatory Setback Features**
- Participating Residences - 1000 feet
  - Non-Participating Residences - 3960 feet
  - Non-Participant Parcel
  - Non-Participants - 550 feet
  - Pipeline/Transmission Line - 550 feet
  - Project Boundary - 550 feet
  - Roads - 550 feet
  - Cemetery - 1 Mile

**Figure 3c**  
**Project Micrositing (Detailed)**

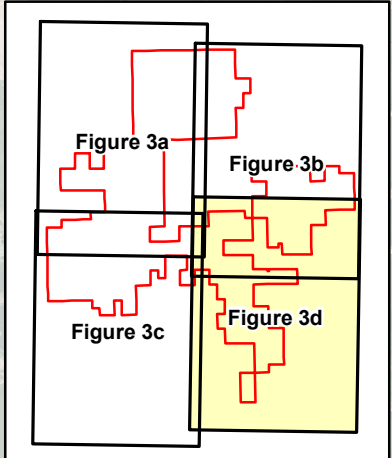
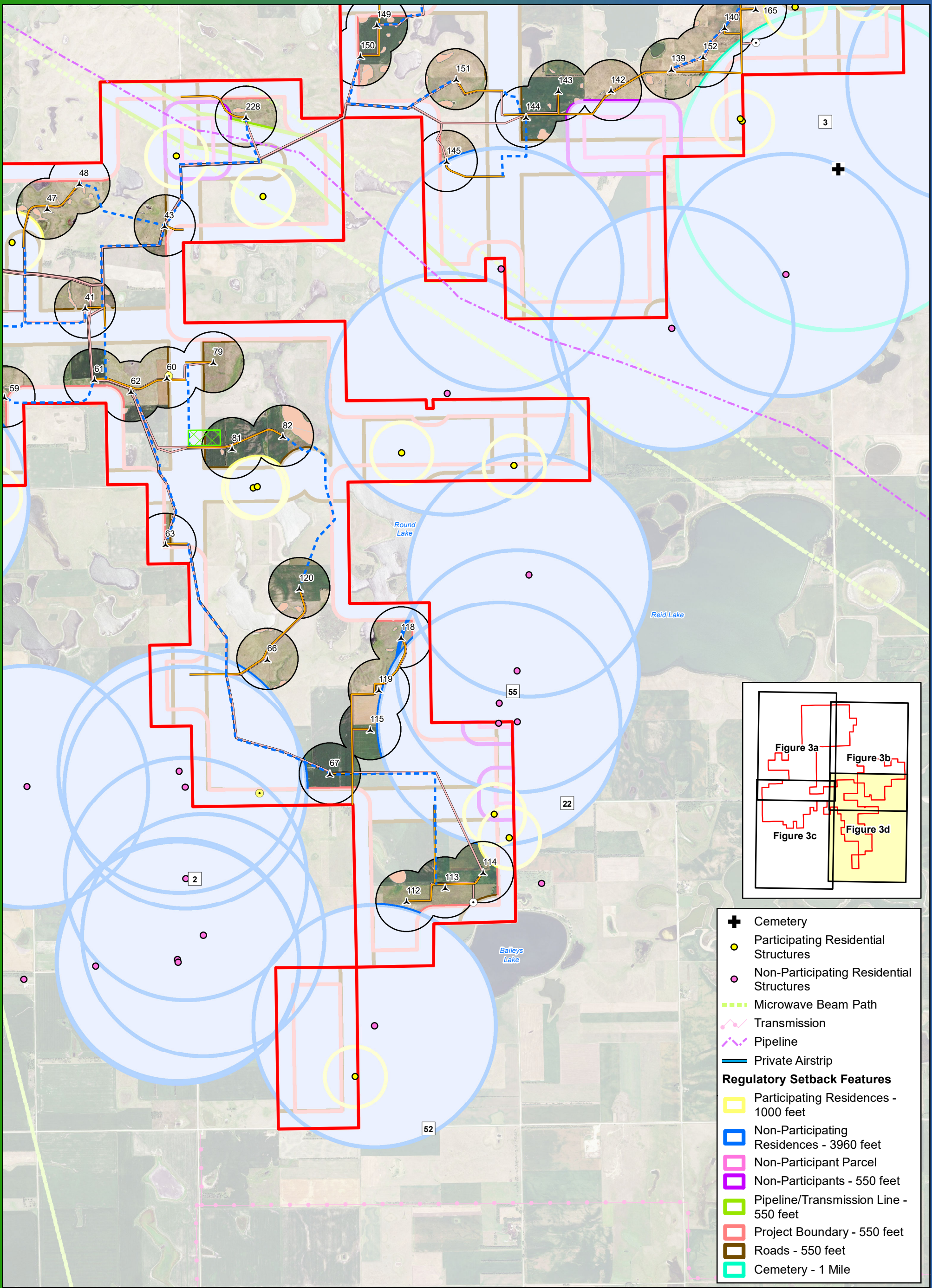
**Crocker Wind Farm**  
**Clark County, SD**  
**45.079602, -97.845696**

- ▲ Turbine Location
- Preliminary Permanent Met Tower
- Temporary Met Tower
- Project Area Boundary
- Project Substation
- O&M Facility
- Interconnect Switchyard
- Preliminary Staging Area
- Interconnection 345 kV Transmission Line
- Preliminary Access Road
- Preliminary Collection Line
- Preliminary Crane Path
- 1000 ft Micrositing Area
- Setbacks
- Environmental Avoidance Area

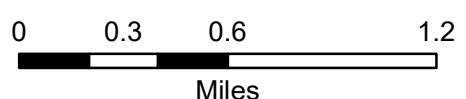
Note:  
 1. Turbines not drawn to scale.  
 2. Turbine numbering is not sequential.  
 3. Any turbine shifts within 1,000 feet will comply with 50 dBA noise setback and 30 hours per year shadow flicker guideline.  
 4. Cultural Resource data is not included.



Imagery Source: 2016 Color FSA  
 Data Source: Geronimo Energy, US Census, SD DOT



- +** Cemetery
- Participating Residential Structures
- Non-Participating Residential Structures
- Microwave Beam Path
- Transmission
- Pipeline
- Private Airstrip
- Regulatory Setback Features**
- Participating Residences - 1000 feet
- Non-Participating Residences - 3960 feet
- Non-Participant Parcel
- Non-Participants - 550 feet
- Pipeline/Transmission Line - 550 feet
- Project Boundary - 550 feet
- Roads - 550 feet
- Cemetery - 1 Mile



Imagery Source: 2016 Color FSA  
 Data Source: Geronimo Energy, US Census, SD DOT

**Figure 3d**  
**Project Micrositing (Detailed)**

**Crocker Wind Farm**  
**Clark County, SD**  
**45.079602, -97.845696**

- ▲** Turbine Location
  - Preliminary Permanent Met Tower
  - Temporary Met Tower
  - Project Area Boundary
  - Project Substation
  - O&M Facility
  - Interconnect Switchyard
  - Preliminary Staging Area
  - Interconnection 345 kV Transmission Line
  - Preliminary Access Road
  - Preliminary Collection Line
  - Preliminary Crane Path
  - 1000 ft Micrositing Area
  - Setbacks
  - Environmental Avoidance Area
- Note:  
 1. Turbines not drawn to scale.  
 2. Turbine numbering is not sequential.  
 3. Any turbine shifts within 1,000 feet will comply with 50 dBA noise setback and 30 hours per year shadow flicker guideline.  
 4. Cultural Resource data is not included.