

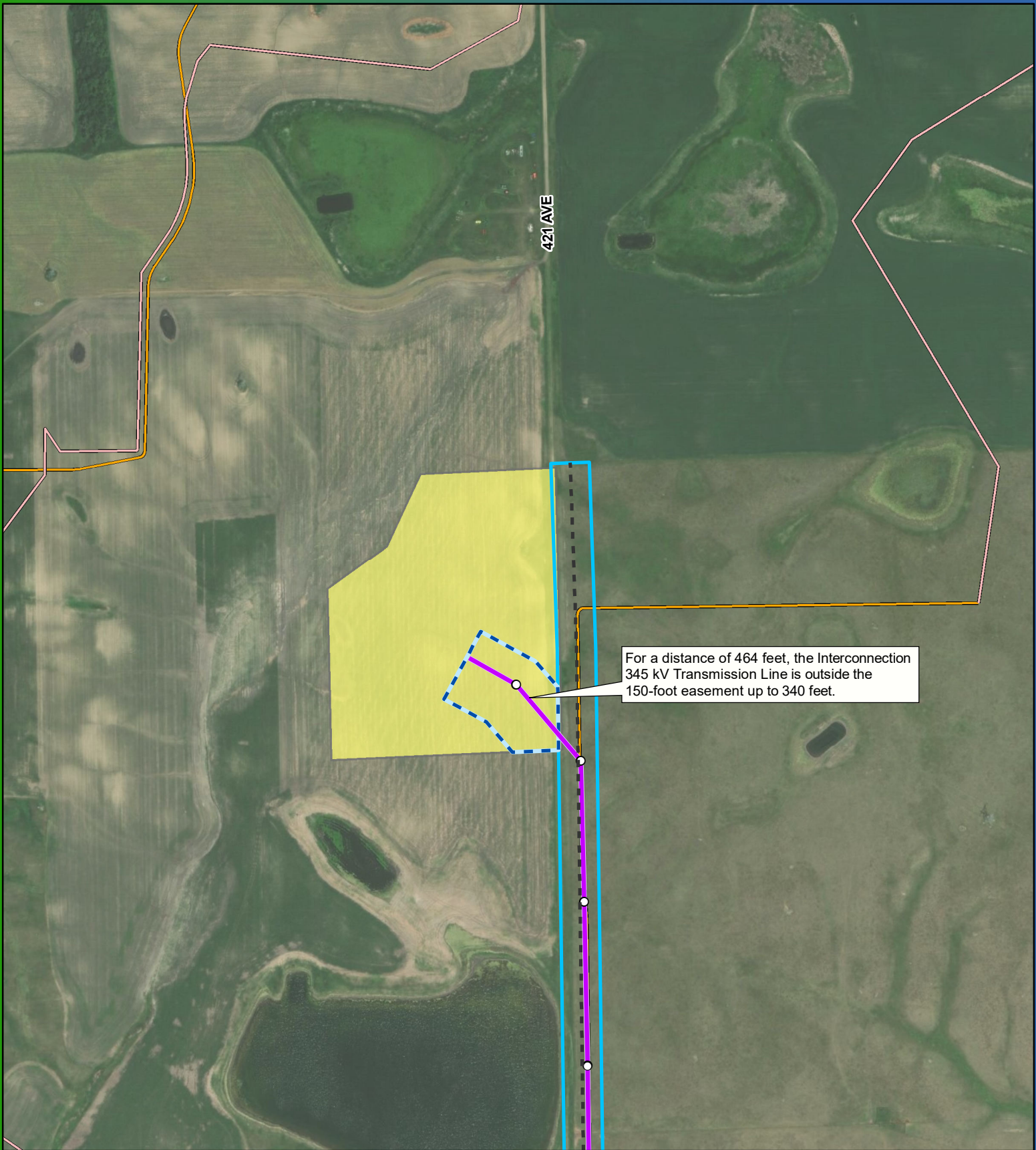
0 200 400 600 Feet

1:6,000



Transmission Line Location Shift Crocker Wind Farm Clark County, SD

- Preliminary Structure Location
- Updated Interconnection 345 kV Transmission Line
- - - Previously Permitted 345 kV Transmission Line
- Previously Permitted 150' Easement
- Updated Transmission Line Easement
- ▨ Project Substation
- ▨ O&M Facility
- Collection Line
- Access Road



0 200 400 600 Feet



1:6,000

Transmission Line Location Shift Crocker Wind Farm Clark County, SD

- Preliminary Structure Location
- Updated Interconnection 345 kV Transmission Line
- - - Previously Permitted 345 kV Transmission Line
- Previously Permitted 150' Easement
- Updated Transmission Line Easement
- Interconnect Switchyard
- Collection Line
- Access Road