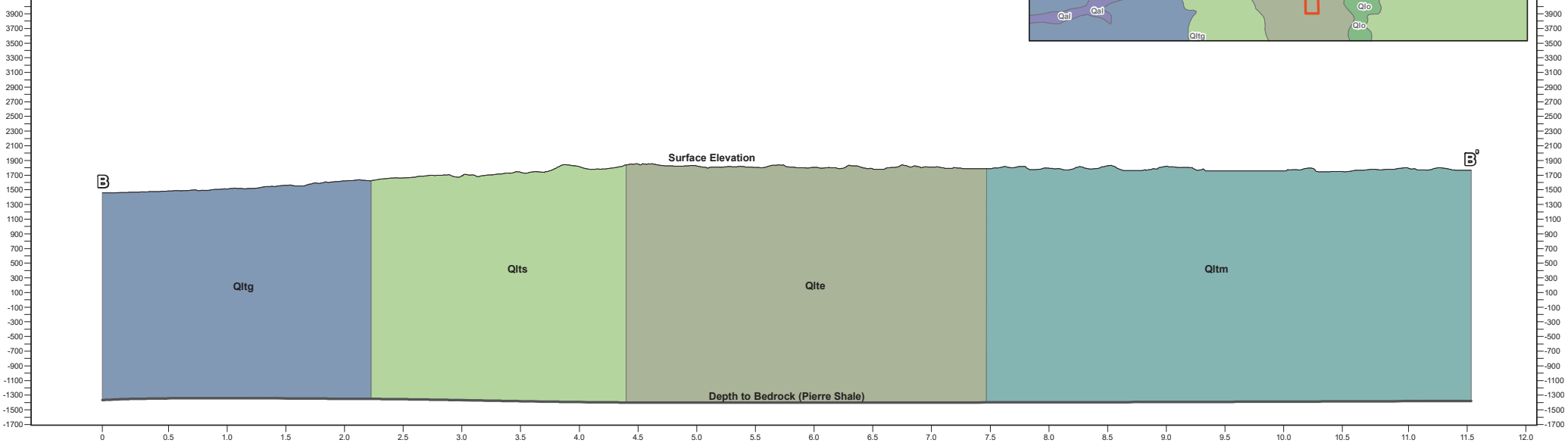
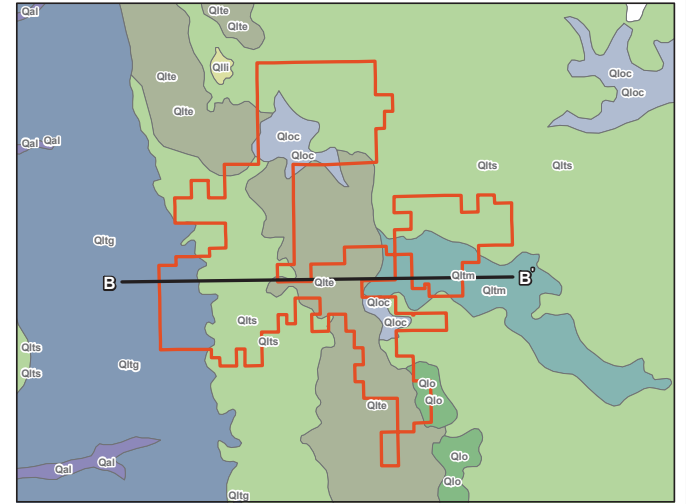


Surface Elevation Range is 1457ft - 1857ft
 Depth to Bedrock Range is 2798ft - 3257ft



Vertical Axes Units are in Feet and Horizontal Axes Units are in Miles



Figure 7b
Surficial and Bedrock Geology Cross Section B - B'

Crocker Wind Farm
Clark County, SD
 45.079602, -97.845696

Geology

- Qlte - Till, end moraine
- Qltg - Till, ground moraine
- Qltm - Till, minor moraine
- Qlts - Till, stagnation moraine