



Site Plan

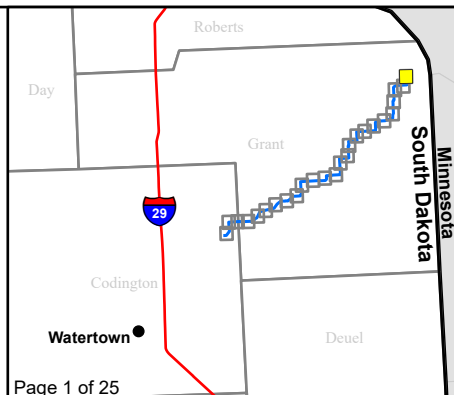
Crowned Ridge Wind, LLC Transmission Line

- Structure Location
- Reactive Substation
- - - Transmission Line
- Substation/O&M Parcel
- Existing Road
- Section Boundary
- ▨ Temporary Pulling Areas
- Township/Range Boundary
- Off-ROW T-Line
- County Boundary
- Temporary Access Route
- T-Line ROW

*Not all off-ROW T-line temporary access routes and temporary pulling areas may be needed for construction. The site plan shows primary as well as alternatives for off-ROW T-line temporary access routes and temporary pulling area options.

Date: 7/11/2019

Page 1 of 25



0 500 1,000
Feet

0 250 500
Meters



Base Map: 2017 Aerial Imagery
Source: USDA/FSA - APFO
Quadrangle: Big Stone Lake SE (1971)

Township/Range: T121N, R47W

Grant County, South Dakota

Projection: NAD 1983 UTM Zone 14N

SWCA
ENVIRONMENTAL CONSULTANTS



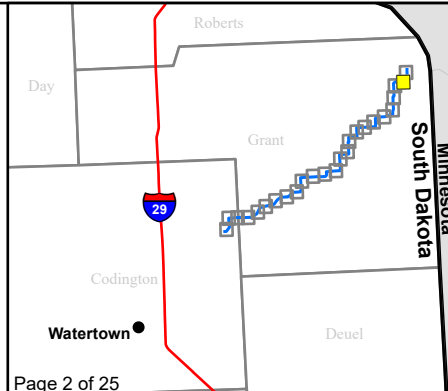
Site Plan

Crowned Ridge Wind, LLC Transmission Line

- Structure Location
- Reactive Substation
- Transmission Line
- Substation/O&M Parcel
- Existing Road
- Section Boundary
- ⊠ Temporary Pulling Areas
- Township/Range Boundary
- Off-ROW T-Line
- County Boundary
- Temporary Access Route
- T-Line ROW

*Not all off-ROW T-line temporary access routes and temporary pulling areas may be needed for construction. The site plan shows primary as well as alternatives for off-ROW T-line temporary access routes and temporary pulling area options.

Date: 7/11/2019



Feet
0 500 1,000

Meters
0 250 500



Base Map: 2017 Aerial Imagery
Source: USDA/FSA - APFO
Quadrangle: Big Stone Lake SE (1971)

Township/Range: T121N, R47W

Grant County, South Dakota

Projection: NAD 1983 UTM Zone 14N

SWCA
ENVIRONMENTAL CONSULTANTS



Site Plan

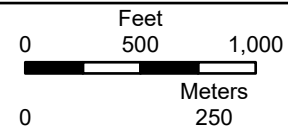
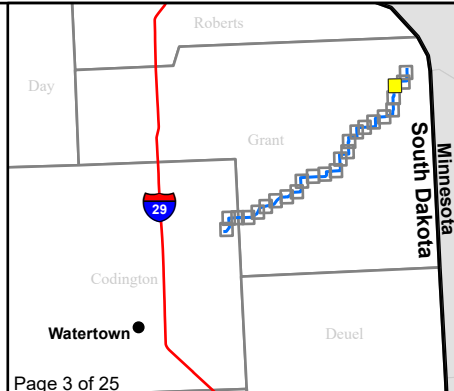
Crowned Ridge Wind, LLC Transmission Line

- Structure Location
- Reactive Substation
- Transmission Line
- Substation/O&M Parcel
- Existing Road
- Section Boundary
- ⊠ Temporary Pulling Areas
- Township/Range Boundary
- Off-ROW T-Line
- County Boundary
- Temporary Access Route
- T-Line ROW

*Not all off-ROW T-line temporary access routes and temporary pulling areas may be needed for construction. The site plan shows primary as well as alternatives for off-ROW T-line temporary access routes and temporary pulling area options.

Date: 7/11/2019

Page 3 of 25



Base Map: 2017 Aerial Imagery
Source: USDA/FSA - APFO
Quadrangle: Milbank East (1973),
Big Stone Lake SE (1971)
Township/Range: T121N, R47W

Grant County, South Dakota

Projection: NAD 1983 UTM Zone 14N

SWCA
ENVIRONMENTAL CONSULTANTS



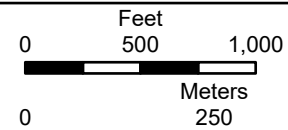
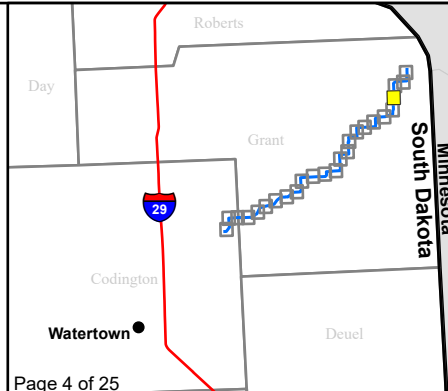
Site Plan

Crowned Ridge Wind, LLC Transmission Line

- Structure Location
- Reactive Substation
- Transmission Line
- Substation/O&M Parcel
- Existing Road
- Section Boundary
- ⊠ Temporary Pulling Areas
- Township/Range Boundary
- Off-ROW T-Line
- Temporary Access Route
- County Boundary
- T-Line ROW

*Not all off-ROW T-line temporary access routes and temporary pulling areas may be needed for construction. The site plan shows primary as well as alternatives for off-ROW T-line temporary access routes and temporary pulling area options.

Date: 7/11/2019

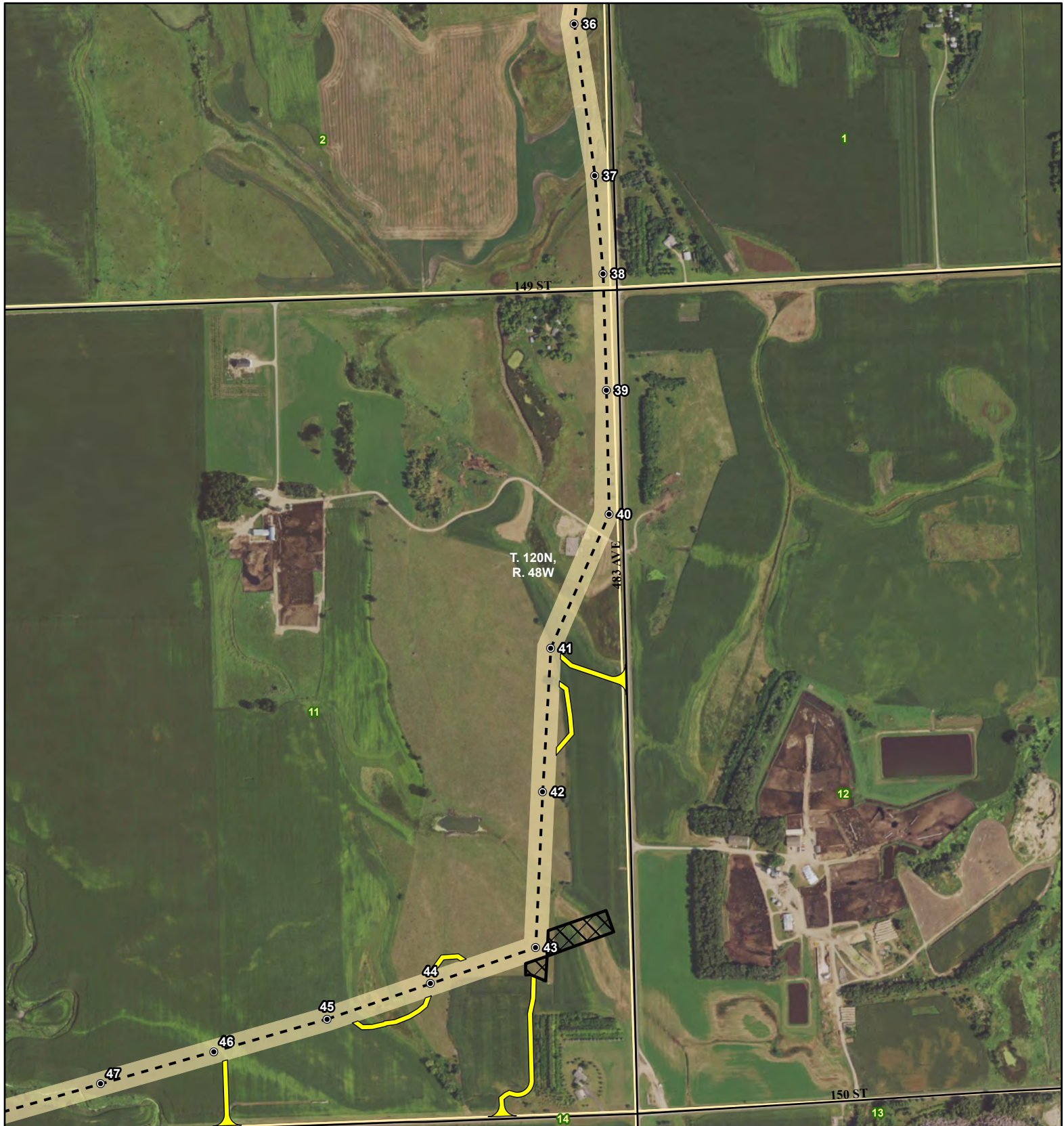


Base Map: 2017 Aerial Imagery
Source: USDA/FSA - APFO
Quadrangle: Milbank East (1973)

Township/Range: T121N, R47W &
T120N, R48W
Grant County, South Dakota

Projection: NAD 1983 UTM Zone 14N

SWCA
ENVIRONMENTAL CONSULTANTS



Site Plan

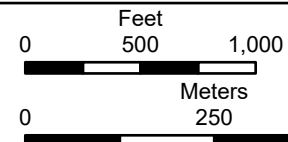
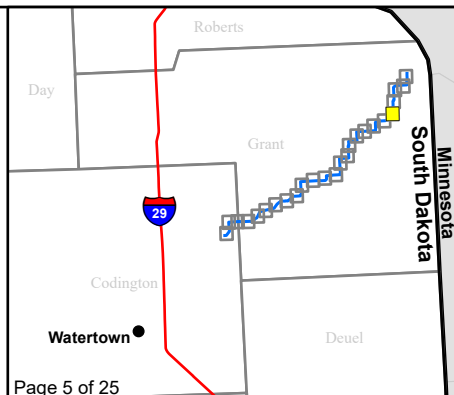
Crowned Ridge Wind, LLC Transmission Line

- Structure Location
- Transmission Line
- Existing Road
- ⊠ Temporary Pulling Areas
- Off-ROW T-Line
- Temporary Access Route
- T-Line ROW
- Reactive Substation
- Substation/O&M Parcel
- Section Boundary
- Township/Range Boundary
- County Boundary

*Not all off-ROW T-line temporary access routes and temporary pulling areas may be needed for construction. The site plan shows primary as well as alternatives for off-ROW T-line temporary access routes and temporary pulling area options.

Date: 7/11/2019

Page 5 of 25



Base Map: 2017 Aerial Imagery
Source: USDA/FSA - APFO
Quadrangle: Milbank East (1973)

Township/Range: T120N, R48W

Grant County, South Dakota

Projection: NAD 1983 UTM Zone 14N

SWCA
ENVIRONMENTAL CONSULTANTS



Site Plan

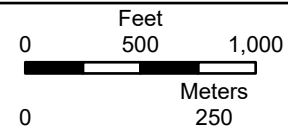
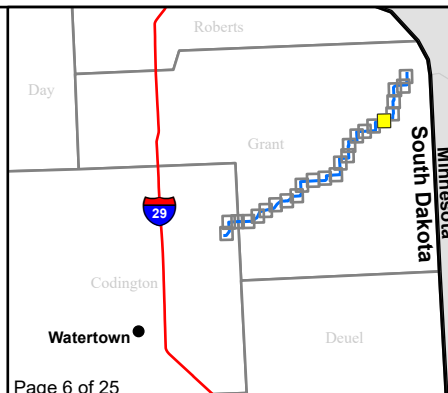
Crowned Ridge Wind, LLC Transmission Line

- Structure Location
- Reactive Substation
- - - Transmission Line
- ▨ Substation/O&M Parcel
- Existing Road
- ▨ Temporary Pulling Areas
- ▨ Off-ROW T-Line Temporary Access Route
- ▨ T-Line ROW
- ▨ Section Boundary
- ▨ Township/Range Boundary
- ▨ County Boundary

*Not all off-ROW T-line temporary access routes and temporary pulling areas may be needed for construction. The site plan shows primary as well as alternatives for off-ROW T-line temporary access routes and temporary pulling area options.

Date: 7/11/2019

Page 6 of 25



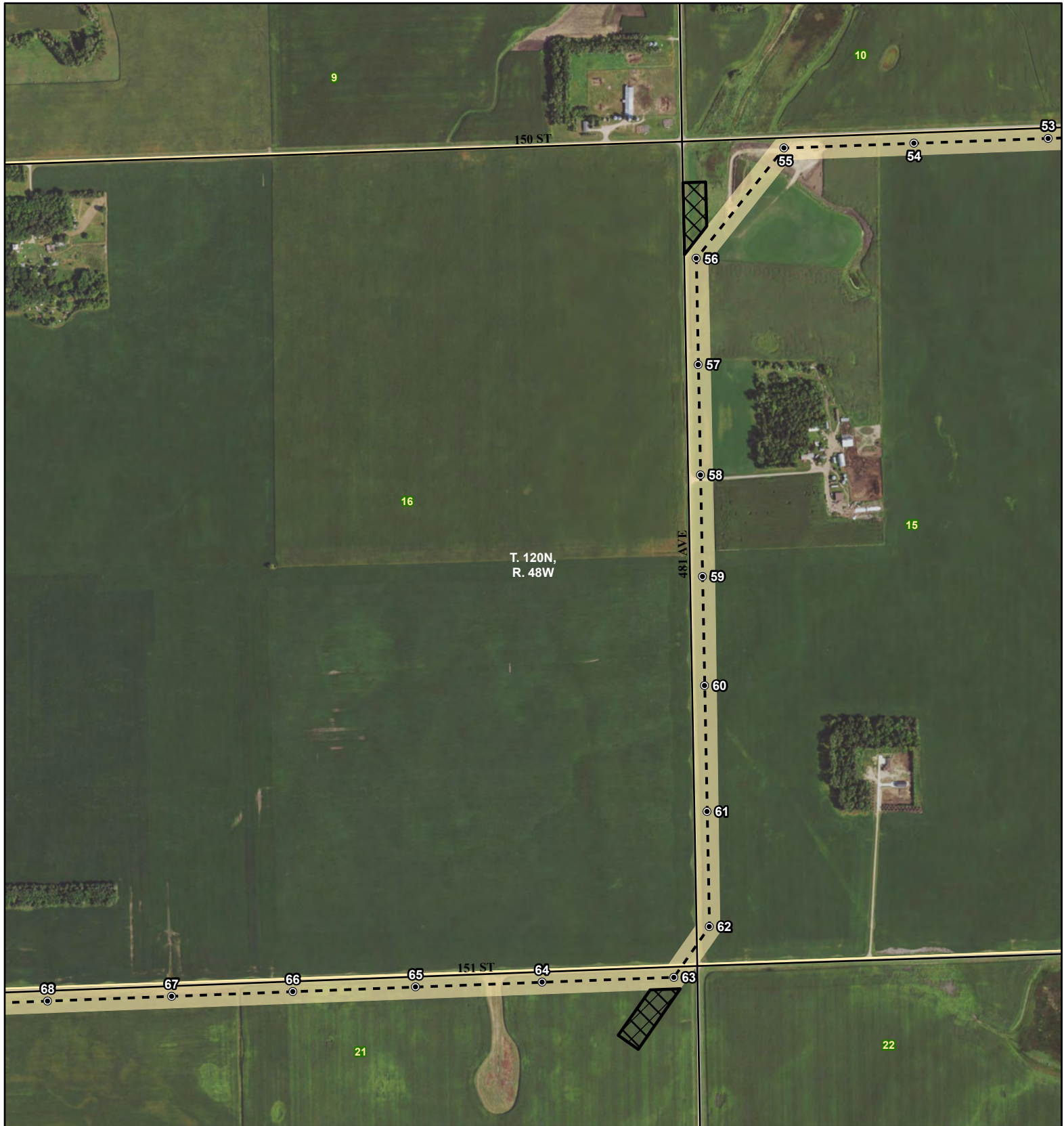
Base Map: 2017 Aerial Imagery
Source: USDA/FSA - APFO
Quadrangle: Milbank East (1973)

Township/Range: T120N, R48W

Grant County, South Dakota

Projection: NAD 1983 UTM Zone 14N

SWCA
ENVIRONMENTAL CONSULTANTS



Site Plan

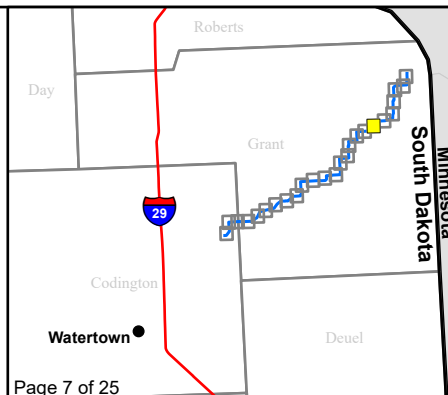
Crowned Ridge Wind, LLC Transmission Line

- Structure Location
- Reactive Substation
- Transmission Line
- Substation/O&M Parcel
- Existing Road
- Section Boundary
- ⊠ Temporary Pulling Areas
- Township/Range Boundary
- Off-ROW T-Line
- County Boundary
- Temporary Access Route
- T-Line ROW

*Not all off-ROW T-line temporary access routes and temporary pulling areas may be needed for construction. The site plan shows primary as well as alternatives for off-ROW T-line temporary access routes and temporary pulling area options.

Date: 7/11/2019

Page 7 of 25



Feet
0 500 1,000

Meters
0 250 500



Base Map: 2017 Aerial Imagery
Source: USDA/FSA - APFO
Quadrangle: Milbank East (1973)

Township/Range: T120N, R48W

Grant County, South Dakota

Projection: NAD 1983 UTM Zone 14N

SWCA
ENVIRONMENTAL CONSULTANTS



Site Plan

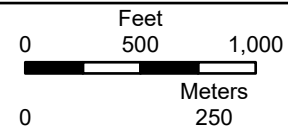
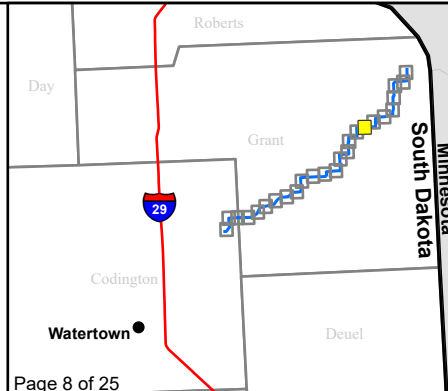
Crowned Ridge Wind, LLC Transmission Line

- Structure Location
- Reactive Substation
- Transmission Line
- Substation/O&M Parcel
- Existing Road
- Section Boundary
- ⊠ Temporary Pulling Areas
- Township/Range Boundary
- Off-ROW T-Line
- County Boundary
- Temporary Access Route
- T-Line ROW

*Not all off-ROW T-line temporary access routes and temporary pulling areas may be needed for construction. The site plan shows primary as well as alternatives for off-ROW T-line temporary access routes and temporary pulling area options.

Date: 7/11/2019

Page 8 of 25



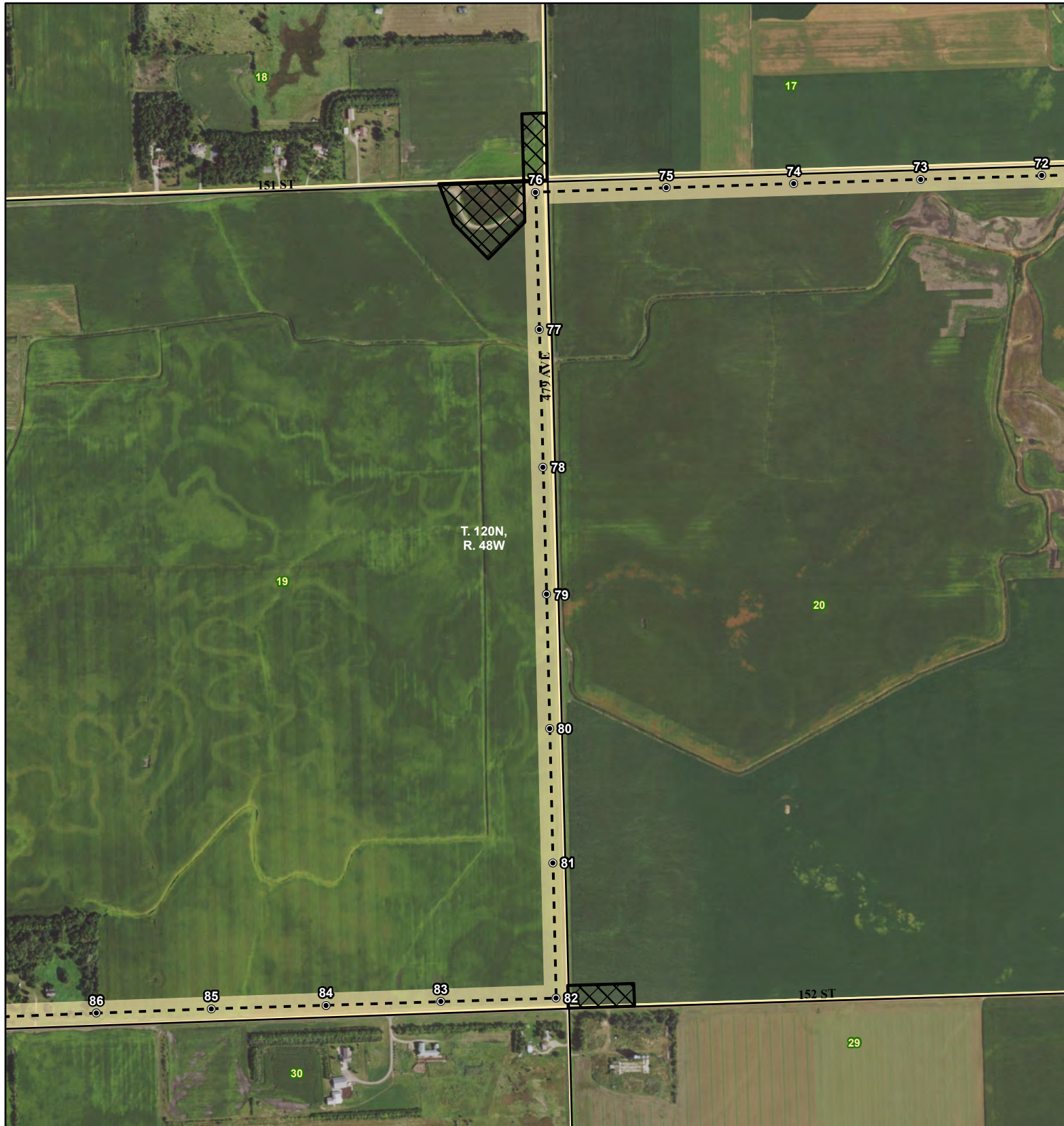
Base Map: 2017 Aerial Imagery
Source: USDA/FSA - APFO
Quadrangle: Milbank East (1973)

Township/Range: T120N, R48W

Grant County, South Dakota

Projection: NAD 1983 UTM Zone 14N

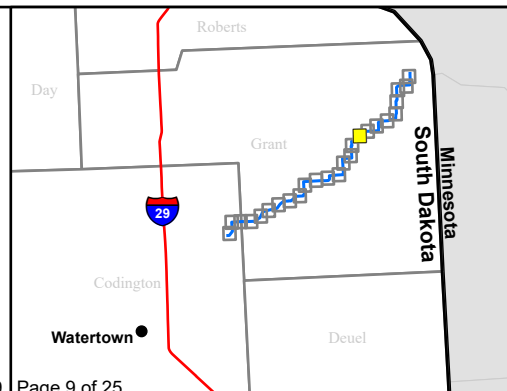
SWCA
ENVIRONMENTAL CONSULTANTS



Site Plan Crowned Ridge Wind, LLC Transmission Line

- Structure Location
- Reactive Substation
- - - Transmission Line
- Substation/O&M Parcel
- Existing Road
- Section Boundary
- ⊠ Temporary Pulling Areas
- Township/Range Boundary
- Off-ROW T-Line
- County Boundary
- Temporary Access Route
- T-Line ROW

*Not all off-ROW T-line temporary access routes and temporary pulling areas may be needed for construction. The site plan shows primary as well as alternatives for off-ROW T-line temporary access routes and temporary pulling area options.



0 500 1,000

0 250 500

Feet

Meters

Base Map: 2017 Aerial Imagery
Source: USDA/FSA - APFO
Quadrangle: Milbank West (1973),
Milbank East (1973)
Township/Range: T120N, R48W

Grant County, South Dakota

Projection: NAD 1983 UTM Zone 14N



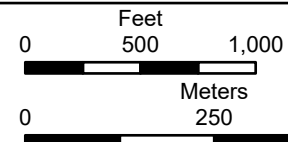
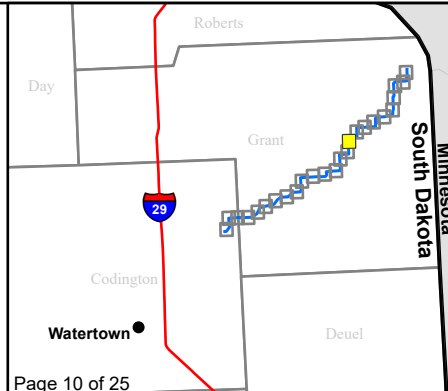
Site Plan

Crowned Ridge Wind, LLC Transmission Line

- Structure Location
- Reactive Substation
- Transmission Line
- Substation/O&M Parcel
- Existing Road
- Section Boundary
- ⊠ Temporary Pulling Areas
- Township/Range Boundary
- Off-ROW T-Line
- County Boundary
- Temporary Access Route
- T-Line ROW

*Not all off-ROW T-line temporary access routes and temporary pulling areas may be needed for construction. The site plan shows primary as well as alternatives for off-ROW T-line temporary access routes and temporary pulling area options.

Date: 7/11/2019



Base Map: 2017 Aerial Imagery
Source: USDA/FSA - APFO
Quadrangle: Milbank West (1973)

Township/Range: T120N, R48W

Grant County, South Dakota

Projection: NAD 1983 UTM Zone 14N

SWCA
ENVIRONMENTAL CONSULTANTS



Site Plan

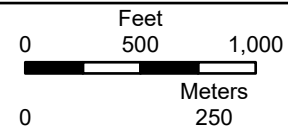
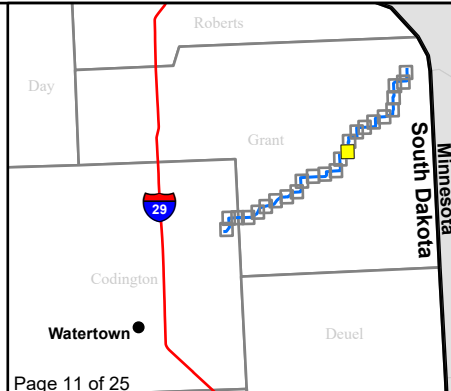
Crowned Ridge Wind, LLC Transmission Line

- Structure Location
- Reactive Substation
- Transmission Line
- Substation/O&M Parcel
- Existing Road
- Section Boundary
- ▨ Temporary Pulling Areas
- Township/Range Boundary
- Off-ROW T-Line Temporary Access Route
- ▨ County Boundary
- T-Line ROW

*Not all off-ROW T-line temporary access routes and temporary pulling areas may be needed for construction. The site plan shows primary as well as alternatives for off-ROW T-line temporary access routes and temporary pulling area options.

Date: 7/11/2019

Page 11 of 25



Base Map: 2017 Aerial Imagery
Source: USDA/FSA - APFO
Quadrangle: Milbank West (1973)

Township/Range: T120N, R48W &
T120N, R49W
Grant County, South Dakota

Projection: NAD 1983 UTM Zone 14N

SWCA
ENVIRONMENTAL CONSULTANTS



Site Plan

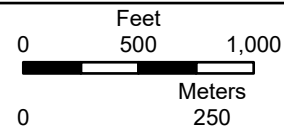
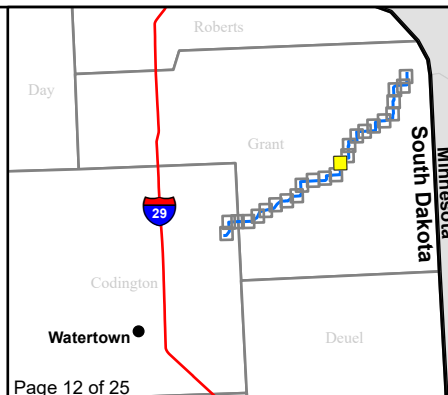
Crowned Ridge Wind, LLC Transmission Line

- Structure Location
- Reactive Substation
- Transmission Line
- Substation/O&M Parcel
- Existing Road
- Section Boundary
- ⊠ Temporary Pulling Areas
- Township/Range Boundary
- Off-ROW T-Line Temporary Access Route
- County Boundary
- T-Line ROW

*Not all off-ROW T-line temporary access routes and temporary pulling areas may be needed for construction. The site plan shows primary as well as alternatives for off-ROW T-line temporary access routes and temporary pulling area options.

Date: 7/11/2019

Page 12 of 25



Base Map: 2017 Aerial Imagery
Source: USDA/FSA - APFO
Quadrangle: Milbank West (1973)

Township/Range: T120N, R49W & T119N, R49W
Grant County, South Dakota

Projection: NAD 1983 UTM Zone 14N

SWCA
ENVIRONMENTAL CONSULTANTS



Site Plan

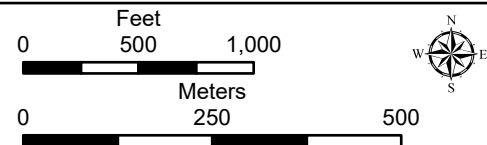
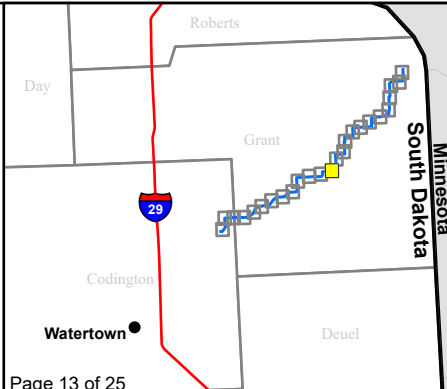
Crowned Ridge Wind, LLC Transmission Line

- Structure Location
- Reactive Substation
- Transmission Line
- Substation/O&M Parcel
- Existing Road
- Section Boundary
- ▨ Temporary Pulling Areas
- Township/Range Boundary
- Off-ROW T-Line
- County Boundary
- Temporary Access Route
- T-Line ROW

*Not all off-ROW T-line temporary access routes and temporary pulling areas may be needed for construction. The site plan shows primary as well as alternatives for off-ROW T-line temporary access routes and temporary pulling area options.

Date: 7/11/2019

Page 13 of 25



Base Map: 2017 Aerial Imagery
Source: USDA/FSA - APFO
Quadrangle: Milbank West (1973)

Township/Range: T119N, R49W

Grant County, South Dakota

Projection: NAD 1983 UTM Zone 14N

SWCA
ENVIRONMENTAL CONSULTANTS



Site Plan

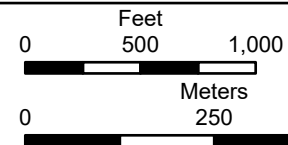
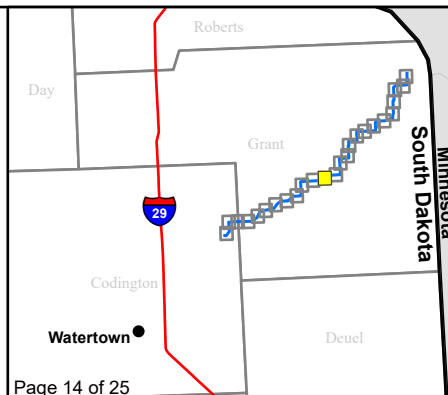
Crowned Ridge Wind, LLC Transmission Line

- Structure Location
- Transmission Line
- Existing Road
- ⊠ Temporary Pulling Areas
- Off-ROW T-Line
- Temporary Access Route
- T-Line ROW
- Reactive Substation
- Substation/O&M Parcel
- Section Boundary
- Township/Range Boundary
- County Boundary

*Not all off-ROW T-line temporary access routes and temporary pulling areas may be needed for construction. The site plan shows primary as well as alternatives for off-ROW T-line temporary access routes and temporary pulling area options.

Date: 7/11/2019

Page 14 of 25



Base Map: 2017 Aerial Imagery
Source: USDA/FSA - APFO
Quadrangle: La Bolt (1973),
Milbank West (1973)
Township/Range: T119N, R49W

Grant County, South Dakota

Projection: NAD 1983 UTM Zone 14N

SWCA
ENVIRONMENTAL CONSULTANTS



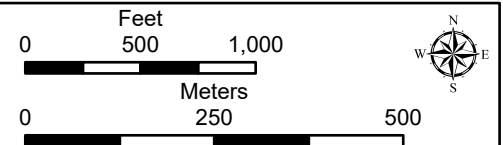
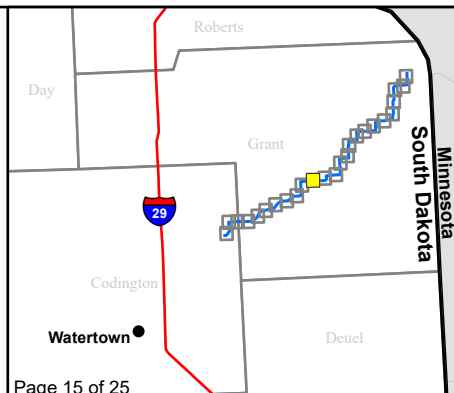
Site Plan

Crowned Ridge Wind, LLC Transmission Line

- Structure Location
- Reactive Substation
- Transmission Line
- Substation/O&M Parcel
- Existing Road
- Section Boundary
- ⊠ Temporary Pulling Areas
- Township/Range Boundary
- Off-ROW T-Line
- County Boundary
- Temporary Access Route
- T-Line ROW

*Not all off-ROW T-line temporary access routes and temporary pulling areas may be needed for construction. The site plan shows primary as well as alternatives for off-ROW T-line temporary access routes and temporary pulling area options.

Date: 7/11/2019



Base Map: 2017 Aerial Imagery
Source: USDA/FSA - APFO
Quadrangle: La Bolt (1973)

Township/Range: T119N, R49W

Grant County, South Dakota

Projection: NAD 1983 UTM Zone 14N

SWCA
ENVIRONMENTAL CONSULTANTS



Site Plan

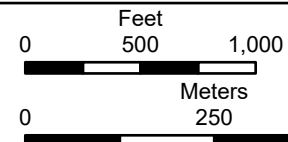
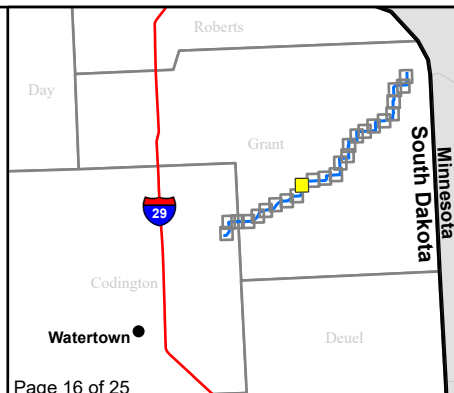
Crowned Ridge Wind, LLC Transmission Line

- Structure Location
- Reactive Substation
- - - Transmission Line
- Substation/O&M Parcel
- Existing Road
- Section Boundary
- Temporary Pulling Areas
- Township/Range Boundary
- Off-ROW T-Line
- County Boundary
- Temporary Access Route
- T-Line ROW

*Not all off-ROW T-line temporary access routes and temporary pulling areas may be needed for construction. The site plan shows primary as well as alternatives for off-ROW T-line temporary access routes and temporary pulling area options.

Date: 7/11/2019

Page 16 of 25



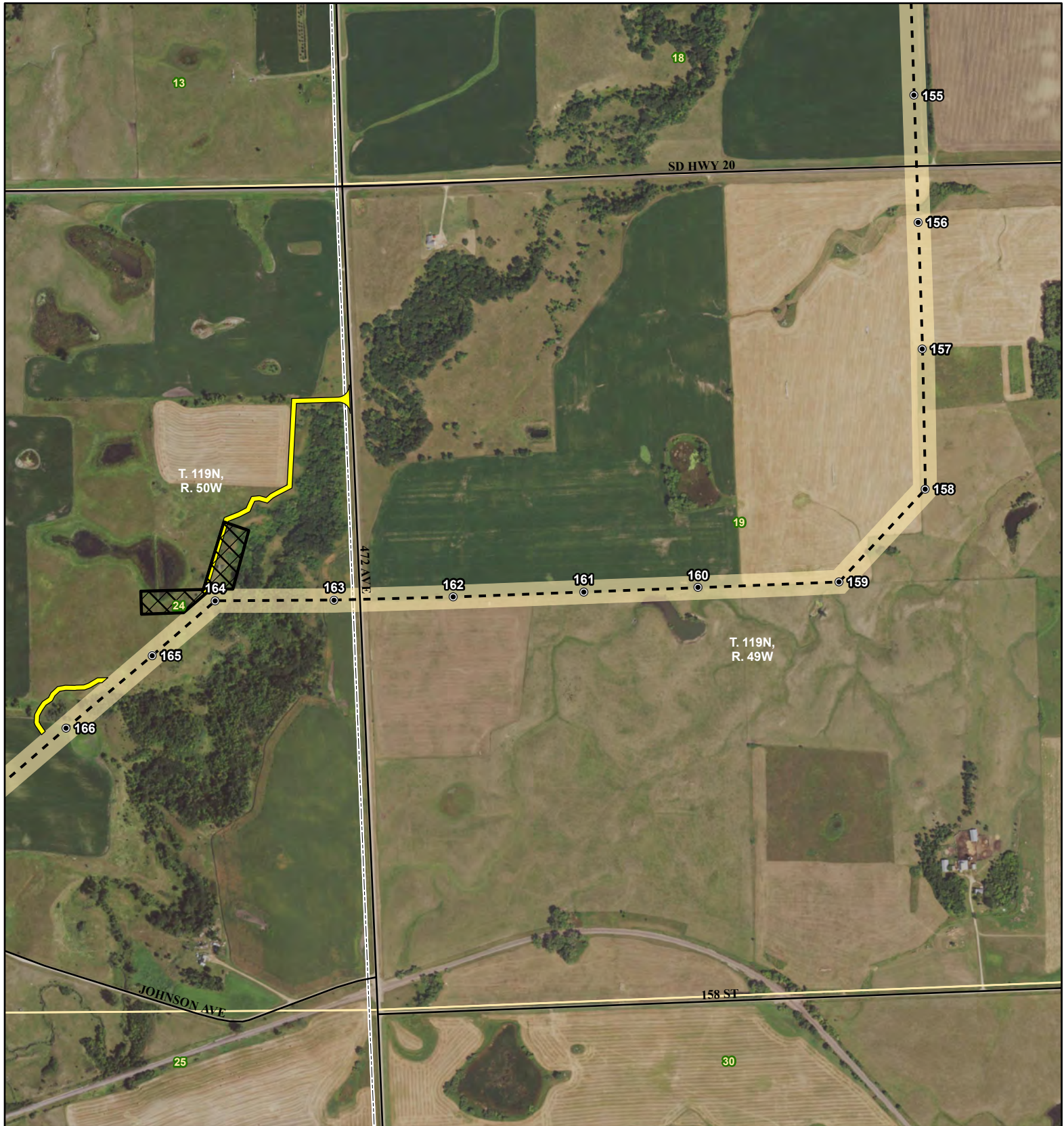
Base Map: 2017 Aerial Imagery
Source: USDA/FSA - APFO
Quadrangle: La Bolt (1973)

Township/Range: T119N, R49W

Grant County, South Dakota

Projection: NAD 1983 UTM Zone 14N

SWCA
ENVIRONMENTAL CONSULTANTS



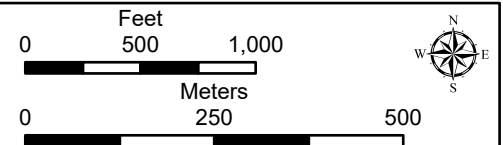
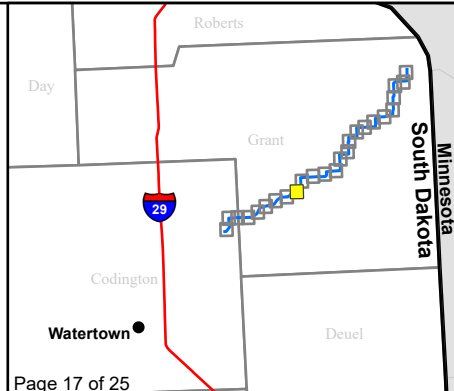
Site Plan

Crowned Ridge Wind, LLC Transmission Line

- Structure Location
- Reactive Substation
- Transmission Line
- Substation/O&M Parcel
- Existing Road
- Section Boundary
- ▨ Temporary Pulling Areas
- Township/Range Boundary
- Off-ROW T-Line
- County Boundary
- Temporary Access Route
- T-Line ROW

*Not all off-ROW T-line temporary access routes and temporary pulling areas may be needed for construction. The site plan shows primary as well as alternatives for off-ROW T-line temporary access routes and temporary pulling area options.

Date: 7/11/2019



Base Map: 2017 Aerial Imagery
 Source: USDA/FSA - APFO
 Quadrange: Stockholm (1973),
 La Bolt (1973)
 Township/Range: T119N, R49W &
 T119N, R50W
 Grant County, South Dakota

Projection: NAD 1983 UTM Zone 14N

SWCA
 ENVIRONMENTAL CONSULTANTS



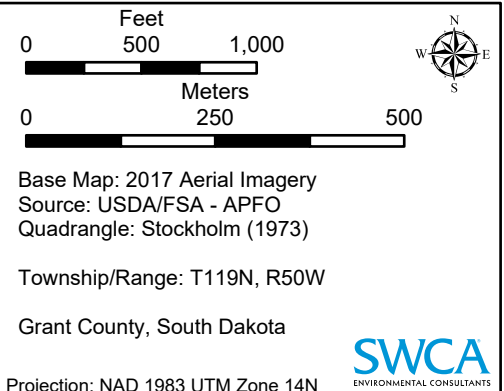
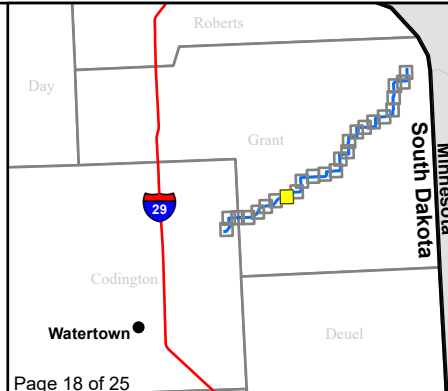
Site Plan

Crowned Ridge Wind, LLC Transmission Line

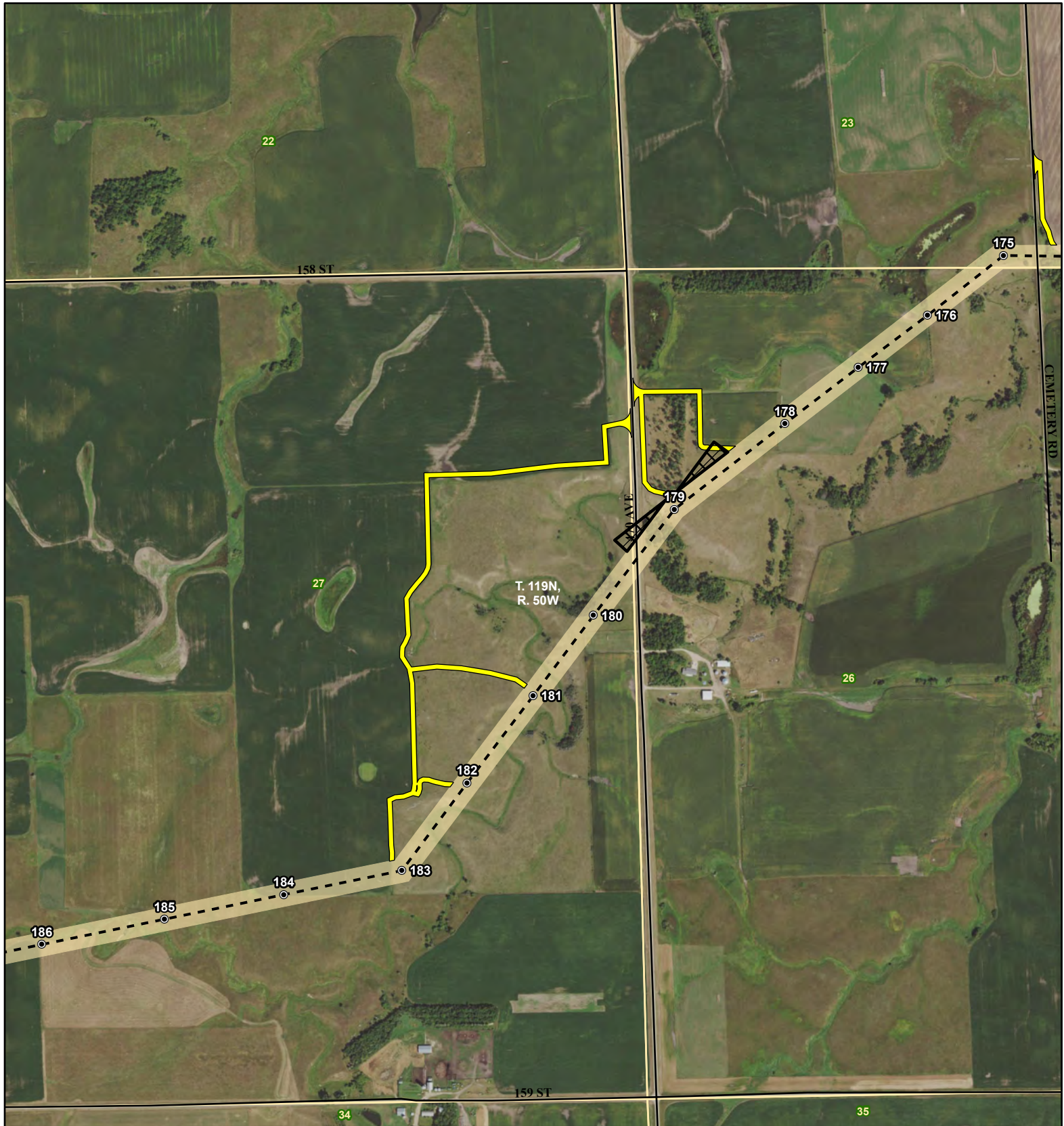
- Structure Location
- Reactive Substation
- Transmission Line
- Substation/O&M Parcel
- Existing Road
- Section Boundary
- ▨ Temporary Pulling Areas
- Township/Range Boundary
- Off-ROW T-Line
- County Boundary
- Temporary Access Route
- T-Line ROW

*Not all off-ROW T-line temporary access routes and temporary pulling areas may be needed for construction. The site plan shows primary as well as alternatives for off-ROW T-line temporary access routes and temporary pulling area options.

Date: 7/11/2019



SWCA
ENVIRONMENTAL CONSULTANTS



Site Plan

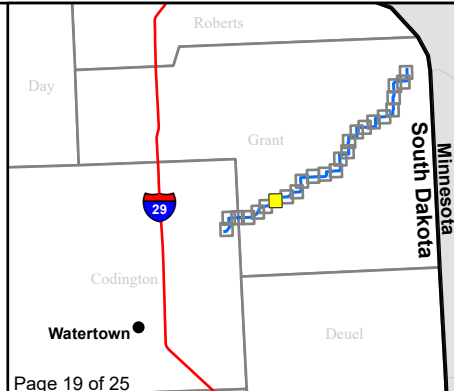
Crowned Ridge Wind, LLC Transmission Line

- Structure Location
- Reactive Substation
- Transmission Line
- Substation/O&M Parcel
- Existing Road
- Section Boundary
- ⊠ Temporary Pulling Areas
- Township/Range Boundary
- Off-ROW T-Line
- County Boundary
- Temporary Access Route
- T-Line ROW

*Not all off-ROW T-line temporary access routes and temporary pulling areas may be needed for construction. The site plan shows primary as well as alternatives for off-ROW T-line temporary access routes and temporary pulling area options.

Date: 7/11/2019

Page 19 of 25



0 500 1,000
Feet

0 250 500
Meters



Base Map: 2017 Aerial Imagery
Source: USDA/FSA - APFO
Quadrangle: Stockholm (1973)

Township/Range: T119N, R50W

Grant County, South Dakota

Projection: NAD 1983 UTM Zone 14N

SWCA
ENVIRONMENTAL CONSULTANTS



Site Plan

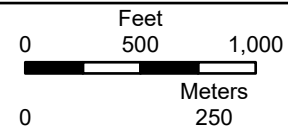
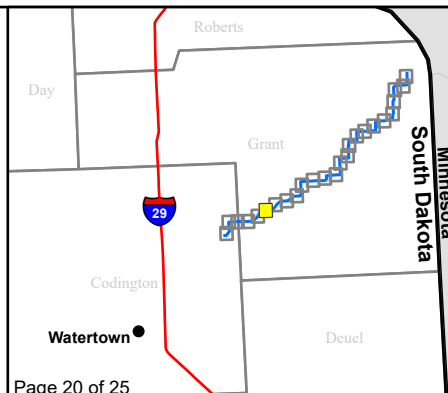
Crowned Ridge Wind, LLC Transmission Line

- Structure Location
- Reactive Substation
- Transmission Line
- Substation/O&M Parcel
- Existing Road
- Section Boundary
- ⊠ Temporary Pulling Areas
- Township/Range Boundary
- Off-ROW T-Line
- County Boundary
- Temporary Access Route
- T-Line ROW

*Not all off-ROW T-line temporary access routes and temporary pulling areas may be needed for construction. The site plan shows primary as well as alternatives for off-ROW T-line temporary access routes and temporary pulling area options.

Date: 7/11/2019

Page 20 of 25



Base Map: 2017 Aerial Imagery
Source: USDA/FSA - APFO
Quadrangle: Stockholm (1973)

Township/Range: T119N, R50W

Grant County, South Dakota

Projection: NAD 1983 UTM Zone 14N

SWCA
ENVIRONMENTAL CONSULTANTS



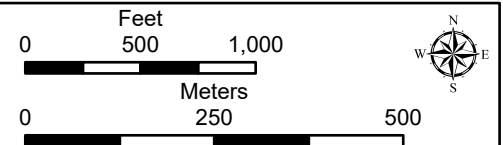
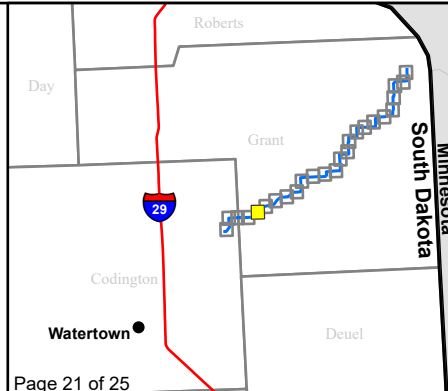
Site Plan

Crowned Ridge Wind, LLC Transmission Line

- Structure Location
- Reactive Substation
- Transmission Line
- Substation/O&M Parcel
- Existing Road
- Section Boundary
- ⊠ Temporary Pulling Areas
- Township/Range Boundary
- Off-ROW T-Line
- County Boundary
- Temporary Access Route
- T-Line ROW

*Not all off-ROW T-line temporary access routes and temporary pulling areas may be needed for construction. The site plan shows primary as well as alternatives for off-ROW T-line temporary access routes and temporary pulling area options.

Date: 7/11/2019



Base Map: 2017 Aerial Imagery
Source: USDA/FSA - APFO
Quadrangle: Stockholm (1973)

Township/Range: T119N, R50W &
T118N, R50W
Grant County, South Dakota

Projection: NAD 1983 UTM Zone 14N

SWCA
ENVIRONMENTAL CONSULTANTS



Site Plan

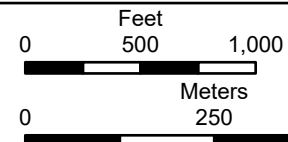
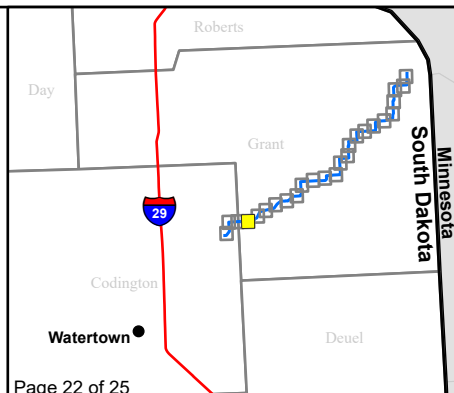
Crowned Ridge Wind, LLC Transmission Line

- Structure Location
- Reactive Substation
- Transmission Line
- Substation/O&M Parcel
- Existing Road
- Section Boundary
- ▨ Temporary Pulling Areas
- Township/Range Boundary
- Off-ROW T-Line
- County Boundary
- Temporary Access Route
- T-Line ROW

*Not all off-ROW T-line temporary access routes and temporary pulling areas may be needed for construction. The site plan shows primary as well as alternatives for off-ROW T-line temporary access routes and temporary pulling area options.

Date: 7/11/2019

Page 22 of 25



Base Map: 2017 Aerial Imagery
Source: USDA/FSA - APFO
Quadrangle: South Shore (1973),
Stockholm (1973)
Township/Range: T118N, R50W

Grant County, South Dakota

Projection: NAD 1983 UTM Zone 14N

SWCA
ENVIRONMENTAL CONSULTANTS



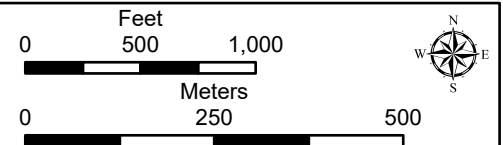
Site Plan

Crowned Ridge Wind, LLC Transmission Line

- Structure Location
- Reactive Substation
- Transmission Line
- Substation/O&M Parcel
- Existing Road
- Section Boundary
- ⊠ Temporary Pulling Areas
- Township/Range Boundary
- Off-ROW T-Line
- County Boundary
- Temporary Access Route
- T-Line ROW

*Not all off-ROW T-line temporary access routes and temporary pulling areas may be needed for construction. The site plan shows primary as well as alternatives for off-ROW T-line temporary access routes and temporary pulling area options.

Date: 7/11/2019



Base Map: 2017 Aerial Imagery
Source: USDA/FSA - APFO
Quadrangle: South Shore (1973)

Township/Range: T118N, R50W &
T119N, R51W
Codington and Grant Counties, South Dakota

Projection: NAD 1983 UTM Zone 14N

SWCA
ENVIRONMENTAL CONSULTANTS



Site Plan

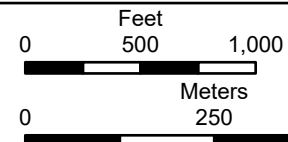
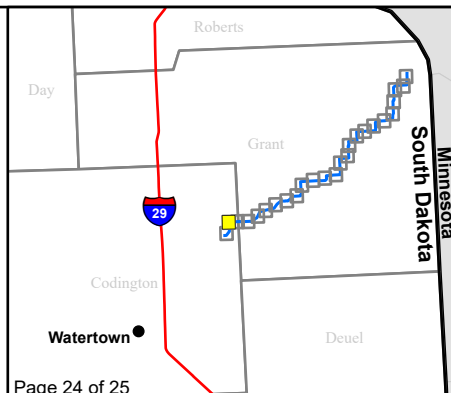
Crowned Ridge Wind, LLC Transmission Line

- Structure Location
- Reactive Substation
- Transmission Line
- Substation/O&M Parcel
- Existing Road
- Section Boundary
- ⊠ Temporary Pulling Areas
- Township/Range Boundary
- Off-ROW T-Line
- County Boundary
- Temporary Access Route
- T-Line ROW

*Not all off-ROW T-line temporary access routes and temporary pulling areas may be needed for construction. The site plan shows primary as well as alternatives for off-ROW T-line temporary access routes and temporary pulling area options.

Date: 7/11/2019

Page 24 of 25



Base Map: 2017 Aerial Imagery
Source: USDA/FSA - APFO
Quadrangle: South Shore (1973)

Township/Range: T119N, R51W &
T118N, R51W
Codington County, South Dakota

Projection: NAD 1983 UTM Zone 14N

SWCA
ENVIRONMENTAL CONSULTANTS



Site Plan

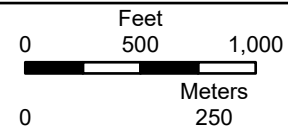
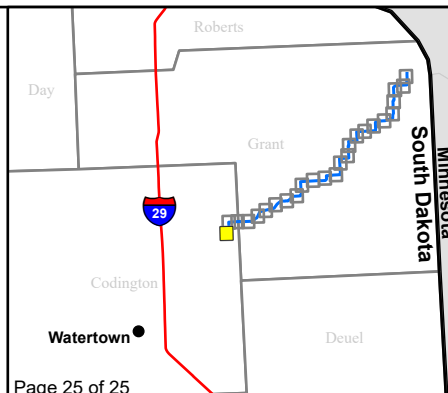
Crowned Ridge Wind, LLC Transmission Line

- Structure Location
- Transmission Line
- Existing Road
- ▨ Temporary Pulling Areas
- Off-ROW T-Line Temporary Access Route
- T-Line ROW
- Reactive Substation
- Laydown Yard
- Substation/O&M Facility
- Section Boundary
- Township/Range Boundary
- County Boundary

*Not all off-ROW T-line temporary access routes and temporary pulling areas may be needed for construction. The site plan shows primary as well as alternatives for off-ROW T-line temporary access routes and temporary pulling area options.

Date: 7/12/2019

Page 25 of 25



Base Map: 2017 Aerial Imagery
Source: USDA/FSA - APFO
Quadrangle: South Shore (1973)

Township/Range: T118N, R51W

Codington County, South Dakota

Projection: NAD 1983 UTM Zone 14N

SWCA
ENVIRONMENTAL CONSULTANTS