

## Crowned Ridge Transmission Line

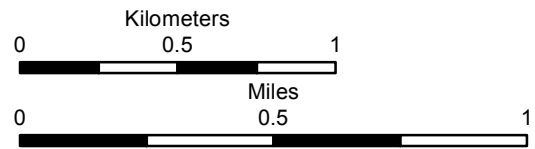
- City
- ✈ Airport
- Proposed Transmission Line
- Railroad
- Electrical Line
- Natural Gas Line
- Unknown Utility Line
- U.S. Highway
- State Highway
- Land Parcel Containing 12-acre Reactor Station
- Project Study Area (1 mile)
- Existing POI Substation
- Proposed Substation
- Desktop Assessment: Potential Dakota Skipper Habitat
- Section Boundary
- Township/Range Boundary
- County Boundary

**SWCA**  
ENVIRONMENTAL CONSULTANTS

116 North 4th Street  
Suite 200  
Bismarck, ND 58501

Phone: 701.258.6622  
Fax: 701.258.5957

[www.swca.com](http://www.swca.com)

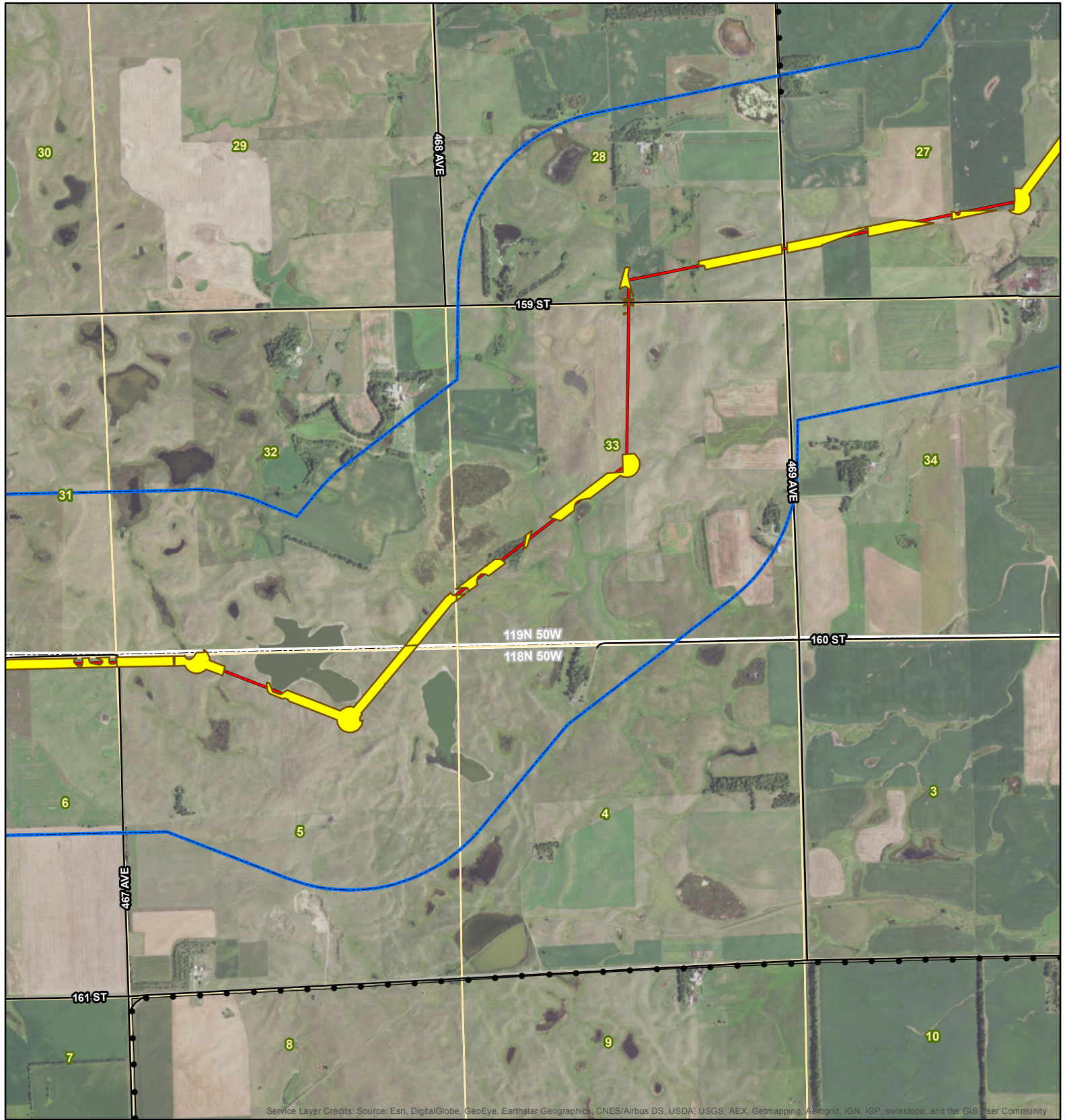


Base Map: 2016 Aerial Imagery  
Source: USDA/FSA - Aerial Photography Field Office  
Quadrangle: South Shore (1973),  
Stockholm (1973)  
Township/Range: T. 118N, R. 51W &  
T. 119N, R. 51W & T. 118N, R. 50W  
Codington and Grant Counties, North Dakota

Projection: NAD 1983 UTM Zone 14N







Service Layer Credits: Source: Esri, DigitalGlobe, GeoEye, Earthstar Geographics, CNES/Airbus DS, USDA, USGS, AEX, Getmapping, Aerogrid, IGN, IGP, swisstopo, and the GIS User Community

## Crowned Ridge Transmission Line

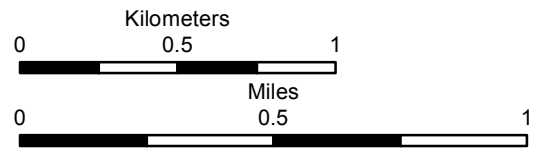
- City
- Airport
- Proposed Transmission Line
- Railroad
- Electrical Line
- Natural Gas Line
- Unknown Utility Line
- U.S. Highway
- State Highway
- Land Parcel Containing 12-acre Reactor Station
- Project Study Area (1 mile)
- Existing POI Substation
- Proposed Substation
- Desktop Assessment: Potential Dakota Skipper Habitat
- Section Boundary
- Township/Range Boundary
- County Boundary

**SWCA**  
ENVIRONMENTAL CONSULTANTS

116 North 4th Street  
Suite 200  
Bismarck, ND 58501

Phone: 701.258.6622  
Fax: 701.258.5957

[www.swca.com](http://www.swca.com)



Base Map: 2016 Aerial Imagery  
Source: USDA/FSA - Aerial Photography Field Office  
Quadrangle: Stockholm (1973)

Township/Range: T. 118N, R. 50W &  
T. 119N, R. 50W  
Grant County, North Dakota

Projection: NAD 1983 UTM Zone 14N



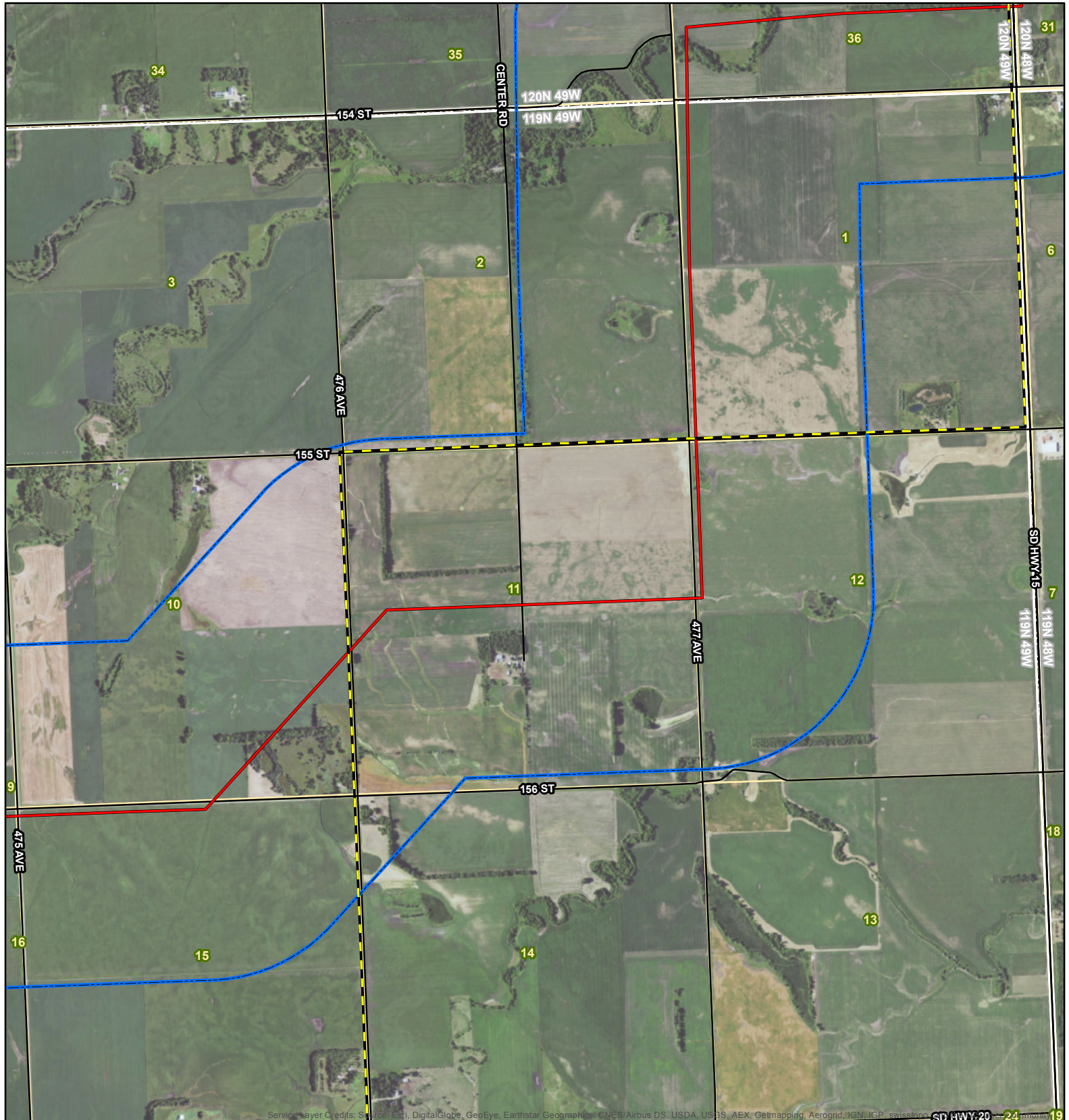












# Crowned Ridge Transmission Line

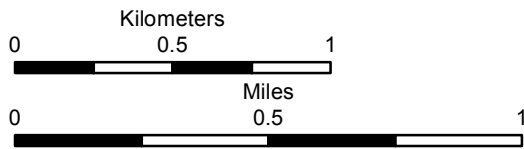
- City
- Airport
- Proposed Transmission Line
- Railroad
- Electrical Line
- Natural Gas Line
- Unknown Utility Line
- U.S. Highway
- State Highway
- Land Parcel Containing 12-acre Reactor Station
- Project Study Area (1 mile)
- Existing POI Substation
- Proposed Substation
- Desktop Assessment: Potential Dakota Skipper Habitat
- Section Boundary
- Township/Range Boundary
- County Boundary



116 North 4th Street  
Suite 200  
Bismarck, ND 58501

Phone: 701.258.6622  
Fax: 701.258.5957

www.swca.com

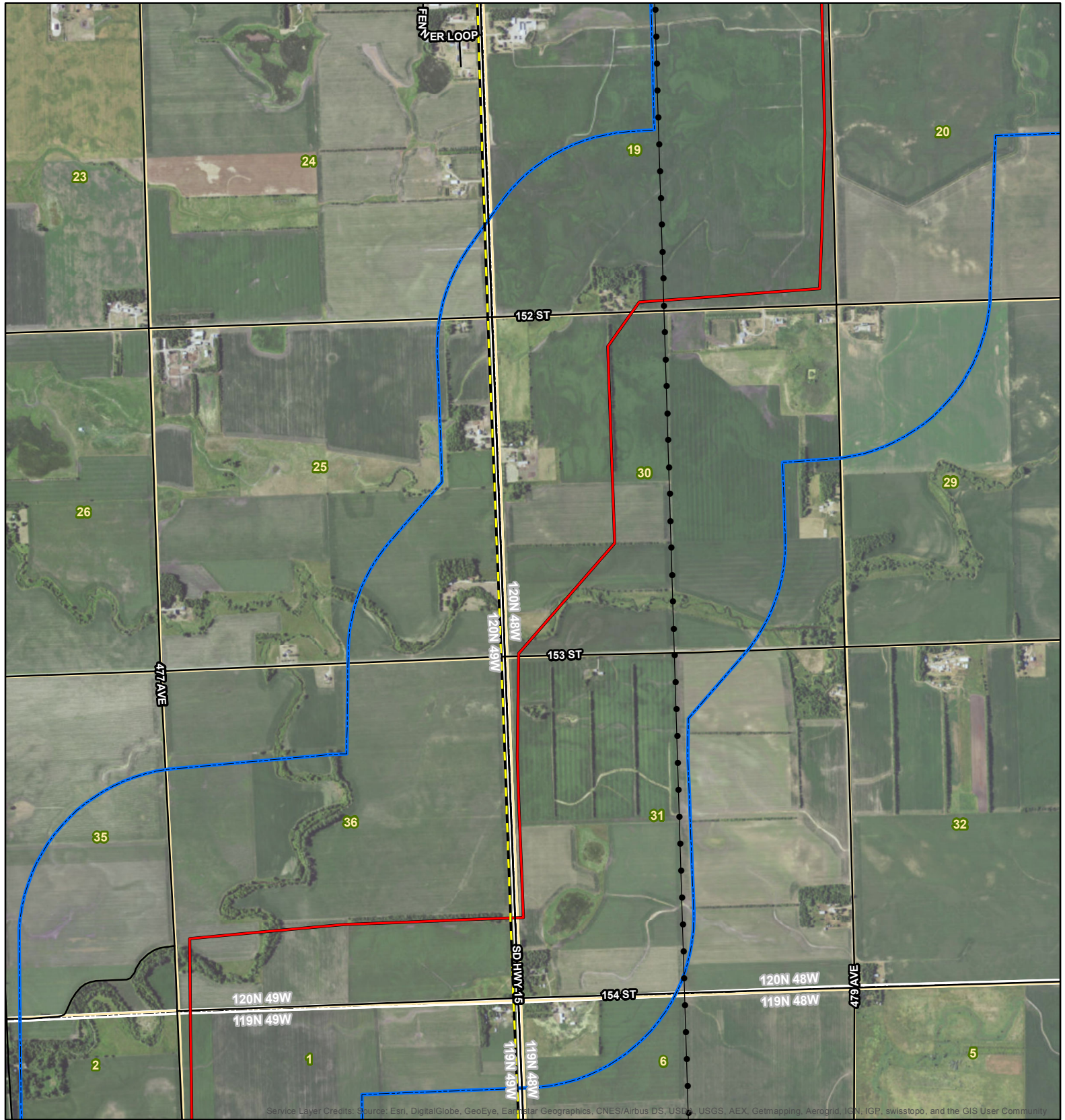


Base Map: 2016 Aerial Imagery  
Source: USDA/FSA - Aerial Photography Field Office  
Quadrangle: LaBolt (1973),  
Milbank West (1973)  
Township/Range: T. 119N, R. 49W &  
T. 120N, R. 49W  
Grant County, North Dakota

Projection: NAD 1983 UTM Zone 14N







## Crowned Ridge Transmission Line

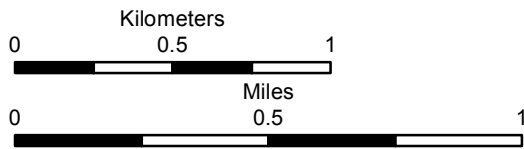
- City
- Airport
- Proposed Transmission Line
- Railroad
- Electrical Line
- Natural Gas Line
- Unknown Utility Line
- U.S. Highway
- State Highway
- Land Parcel Containing 12-acre Reactor Station
- Project Study Area (1 mile)
- Existing POI Substation
- Proposed Substation
- Desktop Assessment: Potential Dakota Skipper Habitat
- Section Boundary
- Township/Range Boundary
- County Boundary



116 North 4th Street  
Suite 200  
Bismarck, ND 58501

Phone: 701.258.6622  
Fax: 701.258.5957

[www.swca.com](http://www.swca.com)

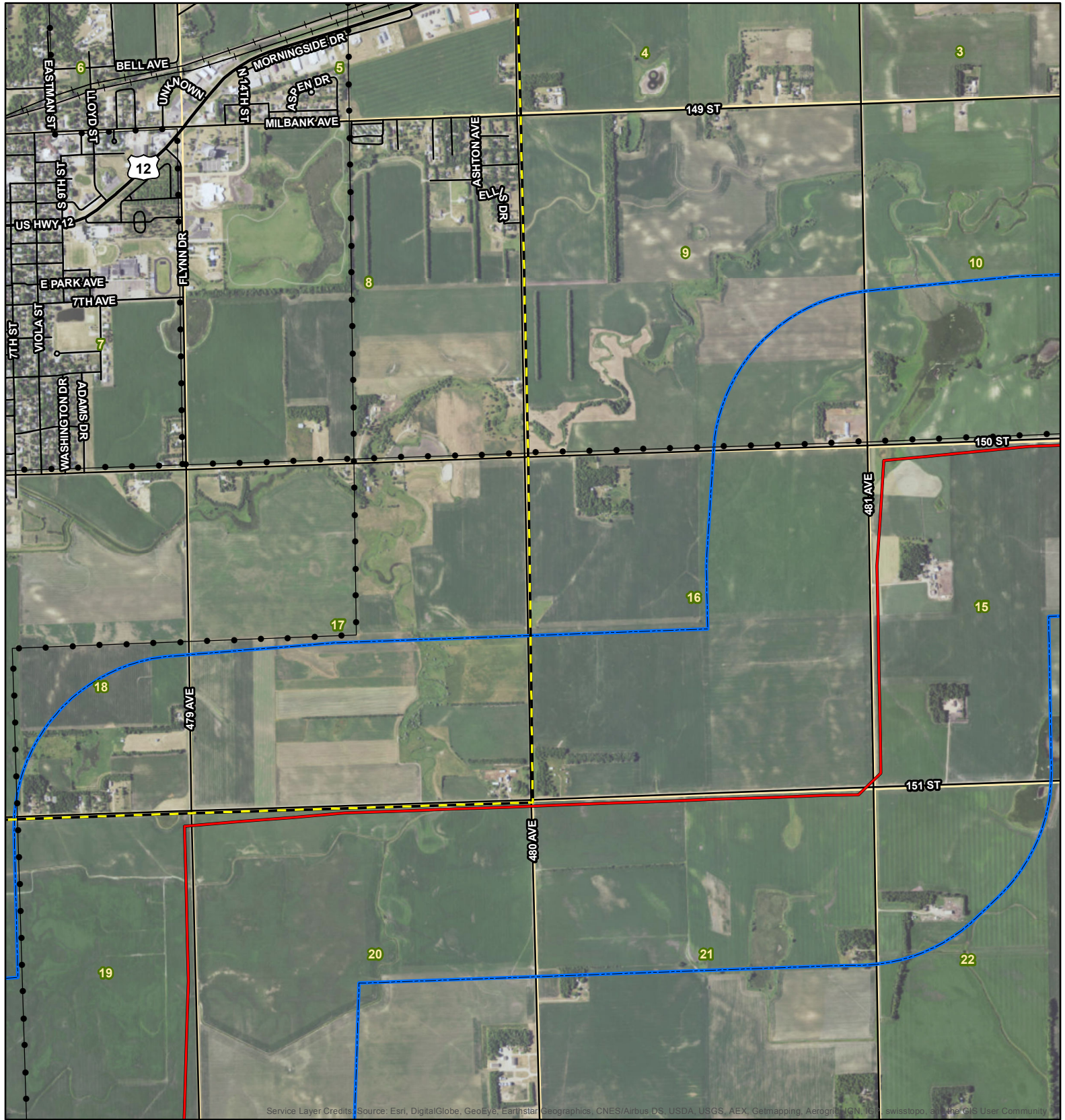


Base Map: 2016 Aerial Imagery  
Source: USDA/FSA - Aerial Photography Field Office  
Quadrangle: Milbank West (1973),  
Milbank East (1973)  
Township/Range: T. 119N, R. 49W &  
T. 120N, R. 49W  
Grant County, North Dakota

Projection: NAD 1983 UTM Zone 14N







## Crowned Ridge Transmission Line

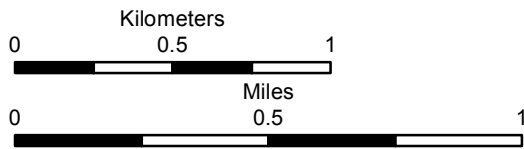
- City
- Airport
- Proposed Transmission Line
- Railroad
- Electrical Line
- Natural Gas Line
- Unknown Utility Line
- U.S. Highway
- State Highway
- Land Parcel Containing 12-acre Reactor Station
- Project Study Area (1 mile)
- Existing POI Substation
- Proposed Substation
- Desktop Assessment: Potential Dakota Skipper Habitat
- Section Boundary
- Township/Range Boundary
- County Boundary



116 North 4th Street  
Suite 200  
Bismarck, ND 58501

Phone: 701.258.6622  
Fax: 701.258.5957

www.swca.com



Base Map: 2016 Aerial Imagery  
Source: USDA/FSA - Aerial Photography Field Office  
Quadrangle: Milbank East (1973)

Township/Range: T. 120N, R. 48W

Grant County, North Dakota

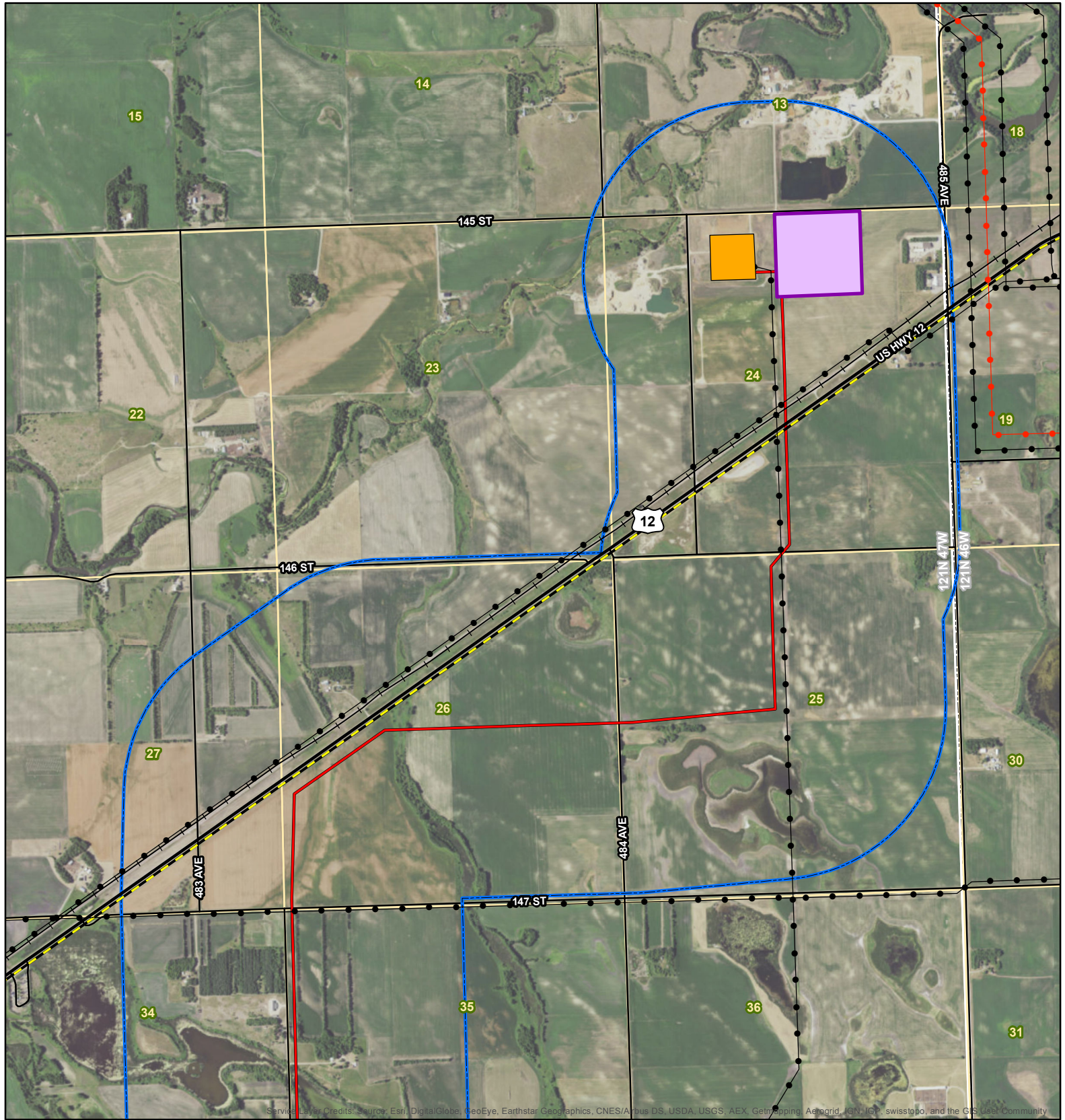
Projection: NAD 1983 UTM Zone 14N











## Crowned Ridge Transmission Line

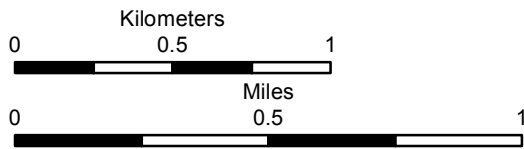
- City
- ✈ Airport
- Proposed Transmission Line
- Railroad
- Electrical Line
- Natural Gas Line
- Unknown Utility Line
- U.S. Highway
- State Highway
- Land Parcel Containing 12-acre Reactor Station
- Project Study Area (1 mile)
- Existing POI Substation
- Proposed Substation
- Desktop Assessment: Potential Dakota Skipper Habitat
- Section Boundary
- Township/Range Boundary
- County Boundary



116 North 4th Street  
Suite 200  
Bismarck, ND 58501

Phone: 701.258.6622  
Fax: 701.258.5957

[www.swca.com](http://www.swca.com)



Base Map: 2016 Aerial Imagery  
Source: USDA/FSA - Aerial Photography Field Office  
Quadrangle: Milbank East (1973),  
Big Stone Lake SE (1971)  
Township/Range: T. 121N, R. 47W

Grant County, North Dakota

Projection: NAD 1983 UTM Zone 14N

