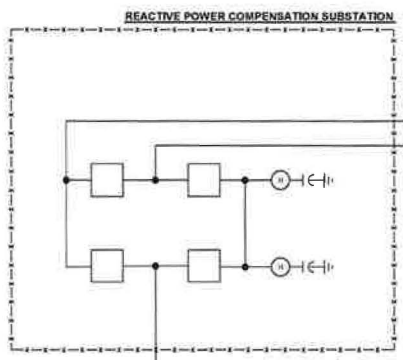


1 2 3 4 5 6 7 8 9 10 11 12 13 14

Rev | date | by | ckd | description

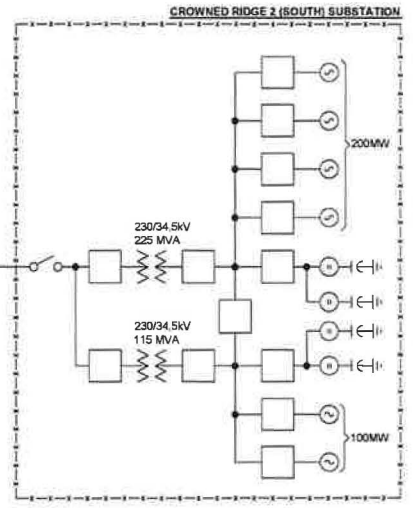
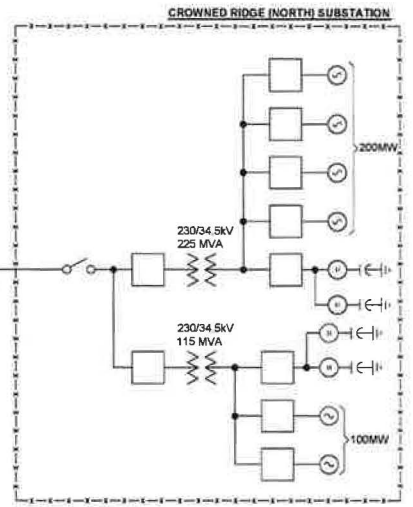


230KV CROWNED RIDGE TRANSMISSION LINE
34 MILES, DOUBLE CIRCUIT
2x 795 KCMIL "DRAKE" ACSR PER PHASE

230KV CROWNED RIDGE 2 TRANSMISSION LINE
14 MILES, SINGLE CIRCUIT
2x 795 KCMIL "DRAKE" ACSR PER PHASE

230KV TIE LINE
~150 FT. SINGLE CIRCUIT.
2x 1590 LAPWING ACSR PER PHASE

OTTERTAIL BIG STONE SOUTH SUBSTATION



1"=100' (Horizontal)
 1"=100' (Vertical)

COPYRIGHT © 2013 BURNS & MCDONNELL ENGINEERING COMPANY, INC.

PRELIMINARY

BURNS & MCDONNELL
 9400 WARD PARKWAY
 KANSAS CITY, MO 64114
 816-333-9400

date	10/23/17	detailed	-
designed	-	checked	-

CROWNED RIDGE WIND, LLC

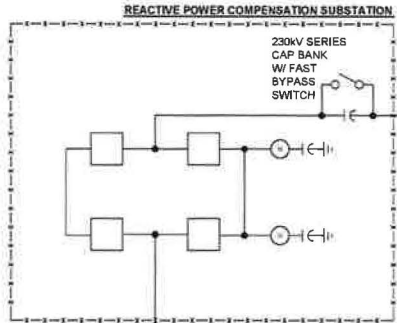
CROWNED RIDGE PROJECT
 OVERVIEW
 DOUBLE-CIRCUIT OPTION

project	-	contract	-
drawing	CR PROJECT	rev.	A
sheet	1	of	1
Title: CROWNED RIDGE PROJECT.DWG			

A
B
C
D
E
F
G
H
I
J

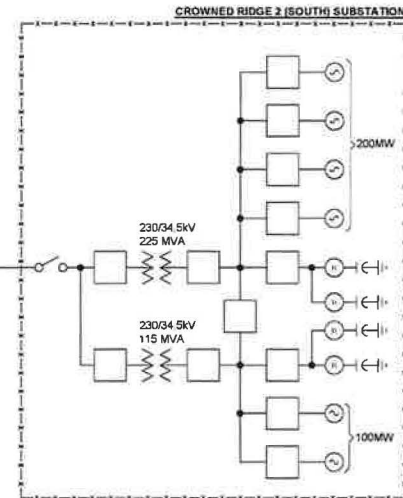
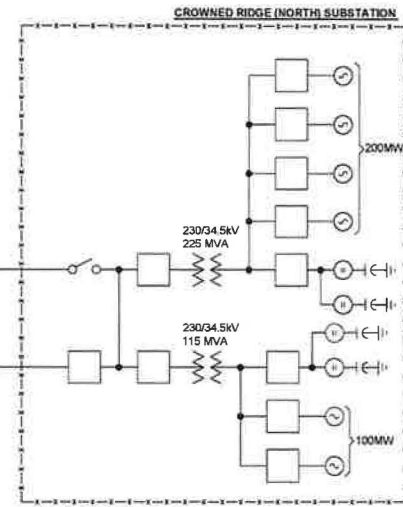
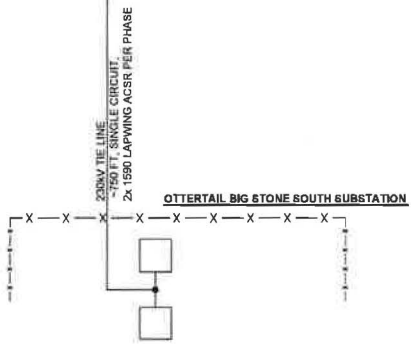
1 2 3 4 5 6 7 8 9 10 11 12 13 14

Rev | date | by | ckd | description



230kV CROWNED RIDGE TRANSMISSION LINE
 34 MILES, SINGLE CIRCUIT
 2x 1590 KCMIL "LAPWING" ACSR PER PHASE

230kV CROWNED RIDGE 2 TRANSMISSION LINE
 14 MILES, SINGLE CIRCUIT
 1x 1272 KCMIL "BITTERN" ACSR PER PHASE



PRELIMINARY

BURNS MEDONNELL
 9400 WARD PARKWAY
 KANSAS CITY, MO 64114
 816-333-9400

date	10/23/17	designed	-
assigned	-	checked	-

CROWNED RIDGE WIND, LLC

CROWNED RIDGE PROJECT
 OVERVIEW
 SINGLE-CIRCUIT OPTION

project	contract
drawing	rev.
CR PROJECT	A
sheet 1	of 1 sheets
file: CROWNED RIDGE PROJECT.DWG	

COPYRIGHT © 2018 BURNS & MEDONNELL ENGINEERING COMPANY, INC.
 Scale: For Information
 Date:

A
B
C
D
E
F
G
H
I
J