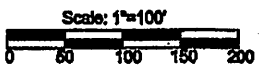
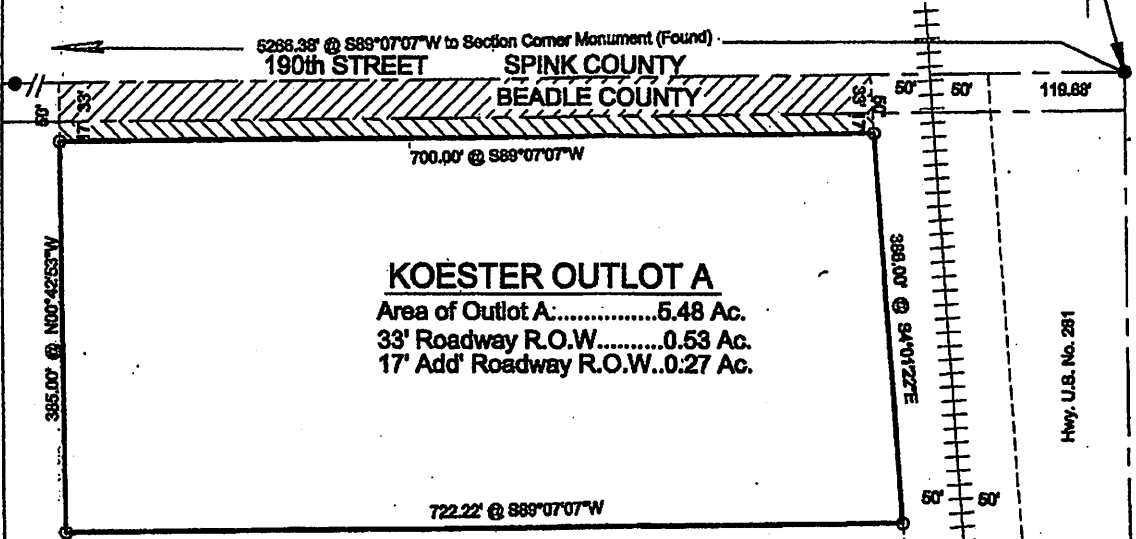
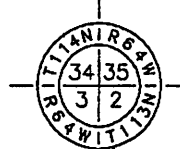


**KOESTER OUTLOT A IN
NE1/4 SEC. 3-T113N-R64W of the 5th P.M.
BEADLE COUNTY, SOUTH DAKOTA**



Francis E. Brink
12-8-2016

LEGEND

- Monuments Found.
- Monuments Set
5/8" Ø rebar w/cap SD1641
- ▨ Statutory Section Line Easement
- ▧ Additional R.O.W Dedication

HIGHWAY AUTHORITY CERTIFICATE

The location of existing accesses for Outlot A are approved.

By: _____ Date: _____
 For the Bonilla Township Highway Department

Prepared By: Francis E. Brink, P.E., L.S., SD1641
 616-4th Street North, Aberdeen, SD 57401
 Tel. (605) 225-6181