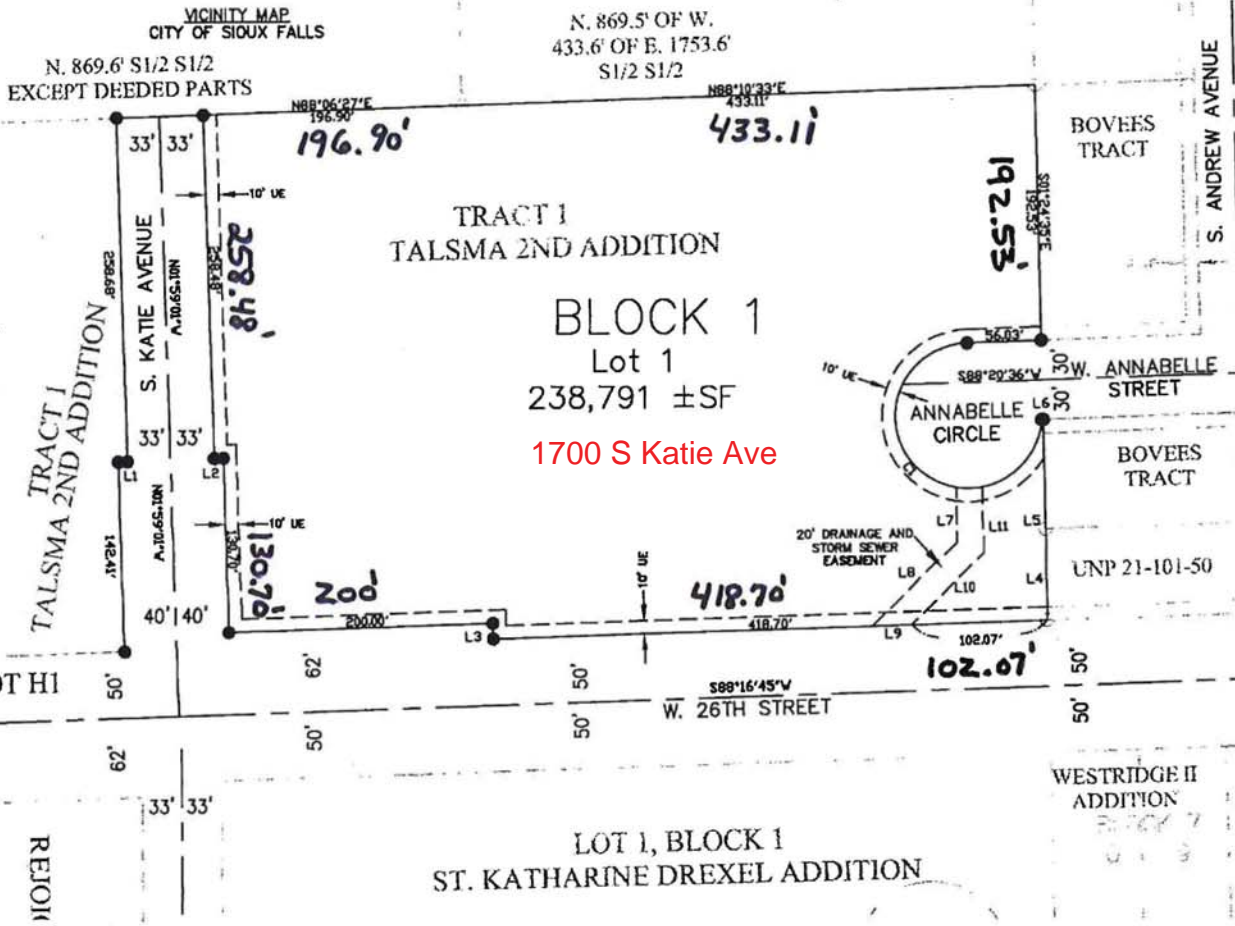
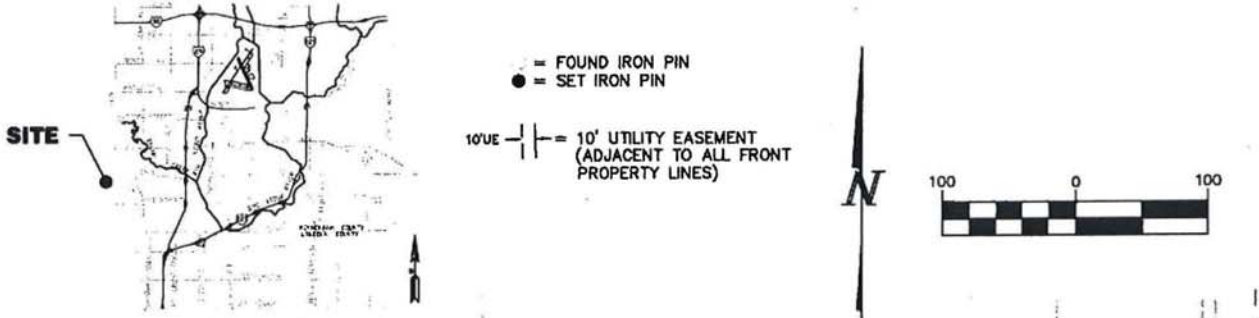


PLAT OF  
**LOT 1, BLOCK 1**  
**TALSMA 2ND ADDITION**  
 TO THE CITY OF SIOUX FALLS,  
 MINNEHAHA COUNTY, SOUTH DAKOTA

**CORRECTED**  
 BOOK 277 OF MISC. PAGE 559



CURVE	DELTA	RADIUS	TANGENT	CHORD BEARING	CHORD DISTANCE	ARC LENGTH
C1	284°47'3"	55.00'	60.25'	S44°02'55" E	81.24'	254.17'

LINE	LENGTH	BEARING
L1	7.00	S88°06'27" W
L2	7.00	S88°06'27" W
L3	12.00	S01°43'15" E
L4	67.98	S01°07'22" E
L5	82.02	S01°24'35" E
L6	1.00	N88°20'36" E
L7	40.93	N01°16'53" W
L8	89.01	N45°39'00" E
L10	75.97	N45°39'00" E
L11	49.32	N01°16'53" W

**SURVEYOR'S CERTIFICATE**

I, DAVID L. JIBBEN, OF DESIGN AND DEVELOP ENGINEERING, LLC, A REGISTERED LAND SURVEYOR IN THE STATE OF SOUTH DAKOTA, DO HEREBY CERTIFY THAT I DID, ON OR BEFORE AUGUST 13, 2014 SURVEY A PORTION OF TRACT 1 TALSMA 2ND ADDITION TO THE CITY OF SIOUX FALLS, MINNEHAHA COUNTY, SOUTH DAKOTA AS SHOWN ON THE ABOVE PLAT. THAT PORTION OF LAND SHALL HEREAFTER BE KNOWN AND DESCRIBED AS LOT 1, BLOCK 1, TALSMA 2ND ADDITION TO THE CITY OF SIOUX FALLS, MINNEHAHA COUNTY, SOUTH DAKOTA CONTAINING 6.40± ACRES.

I FURTHER CERTIFY THAT TO THE BEST OF MY KNOWLEDGE THE ABOVE PLAT CORRECTLY REPRESENTS THE SAME, IS TRUE AND CORRECT AND THAT IT WAS MADE UNDER MY DIRECT SUPERVISION.

DATED THIS 25<sup>TH</sup> DAY OF August, 2014

DAVID L. JIBBEN, RLS 6972

