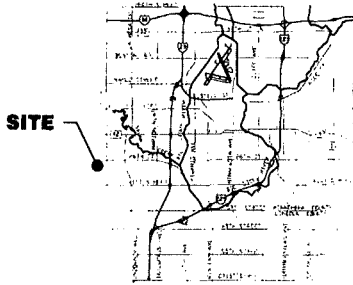


D-5-456
M-4-278

PLAT OF
LOT 1, BLOCK 2
TALSMA 2ND ADDITION
TO THE CITY OF SIOUX FALLS,
MINNEHAHA COUNTY, SOUTH DAKOTA



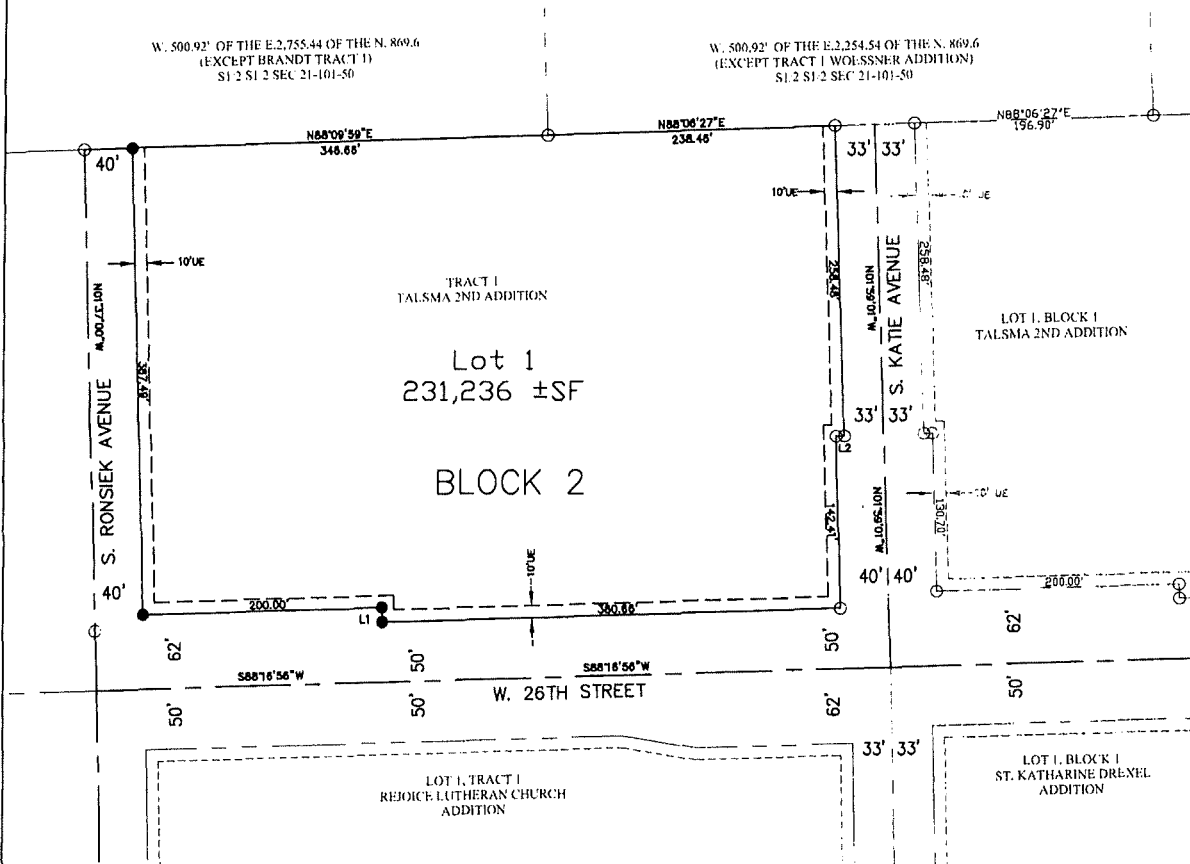
VICINITY MAP
CITY OF SIOUX FALLS

○ = FOUND IRON PIN
● = SET IRON PIN

10' UE ——— = 10' UTILITY EASEMENT
(ADJACENT TO ALL FRONT
PROPERTY LINES)



LINE TABLE		
LINE	LENGTH	BEARING
L1	12.00'	S01°43'04"E
L2	7.00'	S88°08'27"W



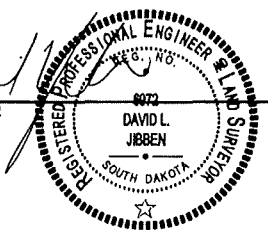
SURVEYOR'S CERTIFICATE

I, DAVID L. JIBBEN, OF DESIGN AND DEVELOP ENGINEERING, LLC, A REGISTERED LAND SURVEYOR IN THE STATE OF SOUTH DAKOTA, DO HEREBY CERTIFY THAT I DID, ON OR BEFORE JANUARY 13, 2017 SURVEY TRACT 1, TALSMA 2ND ADDITION TO THE CITY OF SIOUX FALLS, MINNEHAHA COUNTY, SOUTH DAKOTA AS SHOWN ON THE ABOVE PLAT. THAT PORTION OF LAND SHALL HEREAFTER BE KNOWN AND DESCRIBED AS LOT 1, BLOCK 2, TALSMA 2ND ADDITION TO THE CITY OF SIOUX FALLS, MINNEHAHA COUNTY, SOUTH DAKOTA CONTAINING 5.73± ACRES.

I FURTHER CERTIFY THAT TO THE BEST OF MY KNOWLEDGE THE ABOVE PLAT CORRECTLY REPRESENTS THE SAME, IS TRUE AND CORRECT AND THAT IT WAS MADE UNDER MY DIRECT SUPERVISION.

DATED THIS 7TH DAY OF FEBRUARY, 2017.

DAVID L. JIBBEN, RLS 6972



PREPARED BY: DESIGN AND DEVELOP ENGINEERING, LLC
800 LAKEVIEW CIRCLE
TEA, SD 57064
PHONE: (605) 214-1693

Ryan Rients (605) 201-7750 #10098 cash