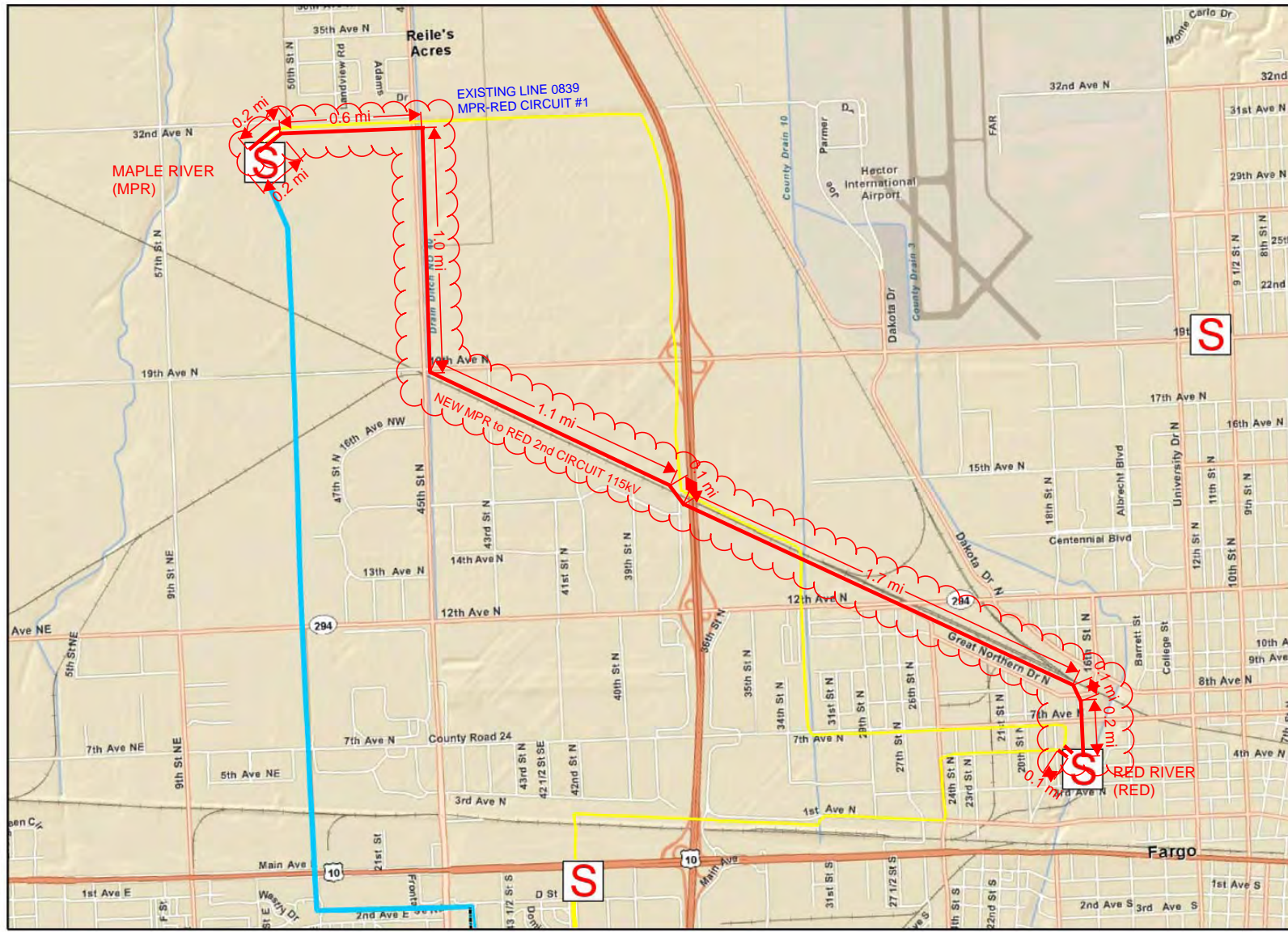


11.



Scale: 1" equals 1922'

Scale: 1" = 0.36 miles



MAPLE RIVER TO RED RIVER 2nd CIRCUIT 115kV SCOPING ESTIMATE

FEBRUARY 16, 2012

5 mile length assumed for new 2nd circuit

0.4 mile length assumed for 0839 line

Ad Hoc Map

THIS MAP/DOCUMENT IS A TOOL TO ASSIST EMPLOYEES IN THE PERFORMANCE OF THEIR JOBS. YOUR PERSONAL SAFETY IS PROVIDED FOR BY USING SAFETY PRACTICES, PROCEDURES AND EQUIPMENT AS DESCRIBED IN THE SAFETY TRAINING PROGRAMS, MANUALS AND SPARS.

By: hllb07

Date: 02/15/2012

CONFIDENTIAL. DO NOT COPY OR DISTRIBUTE TO OTHERS WITHOUT EXPRESS WRITTEN CONSENT FROM XCEL ENERGY.



DISCLAIMER: THERE ARE NO REPRESENTATIONS OR WARRANTIES, EXPRESS OR IMPLIED, ABOUT THE ACCURACY OF THE PRINT. THE PRINT IS PROVIDED WITHOUT CLAIM AS TO PRINT COMPLETENESS, TIMELINESS, ACCURACY OR CONTENT OR OTHERWISE. STATE LAW REQUIRES AVOIDANCE OF NEGLIGENCE AND EXHAUSTING TO OBTAIN A PROFESSIONAL LICENSE FOR ALL UTILITIES. THE PRINT DOES NOT DISCHARGE THE REQUIREMENT OR ANY OTHER REQUIREMENT, THE COMPANY AND ITS AFFILIATES ASSUME NO LEGAL RESPONSIBILITY OR LIABILITY FOR THE RECIPIENT'S USE FOR ANY OTHER EMPLOYEE OR OTHER PARTY. IT IS THE RECIPIENT'S INTENDED PURPOSE IN USING THE PRINT. NO COMPANY EMPLOYEE OR OTHER PARTY HAS BEEN AUTHORIZED TO PROVIDE THIS PRINT FOR PLANNING OR ESTIMATION PURPOSES. RELY ON THIS PRINT AT YOUR OWN RISK. BY ACCEPTING THIS PRINT, THE RECIPIENT AGREES TO RECEIVE A COPY OF THE PRINT ACKNOWLEDGE AND AGREES TO THE DISCLAIMER. For All Other Lines Call 811