



*Nathan Woods of
Black Hills Power*

Teckla-Osage-Lange 230 kV Line SD Public Hearing

August 25, 2014

BHP
Black Hills Power
Improving life with energy



Today's discussion

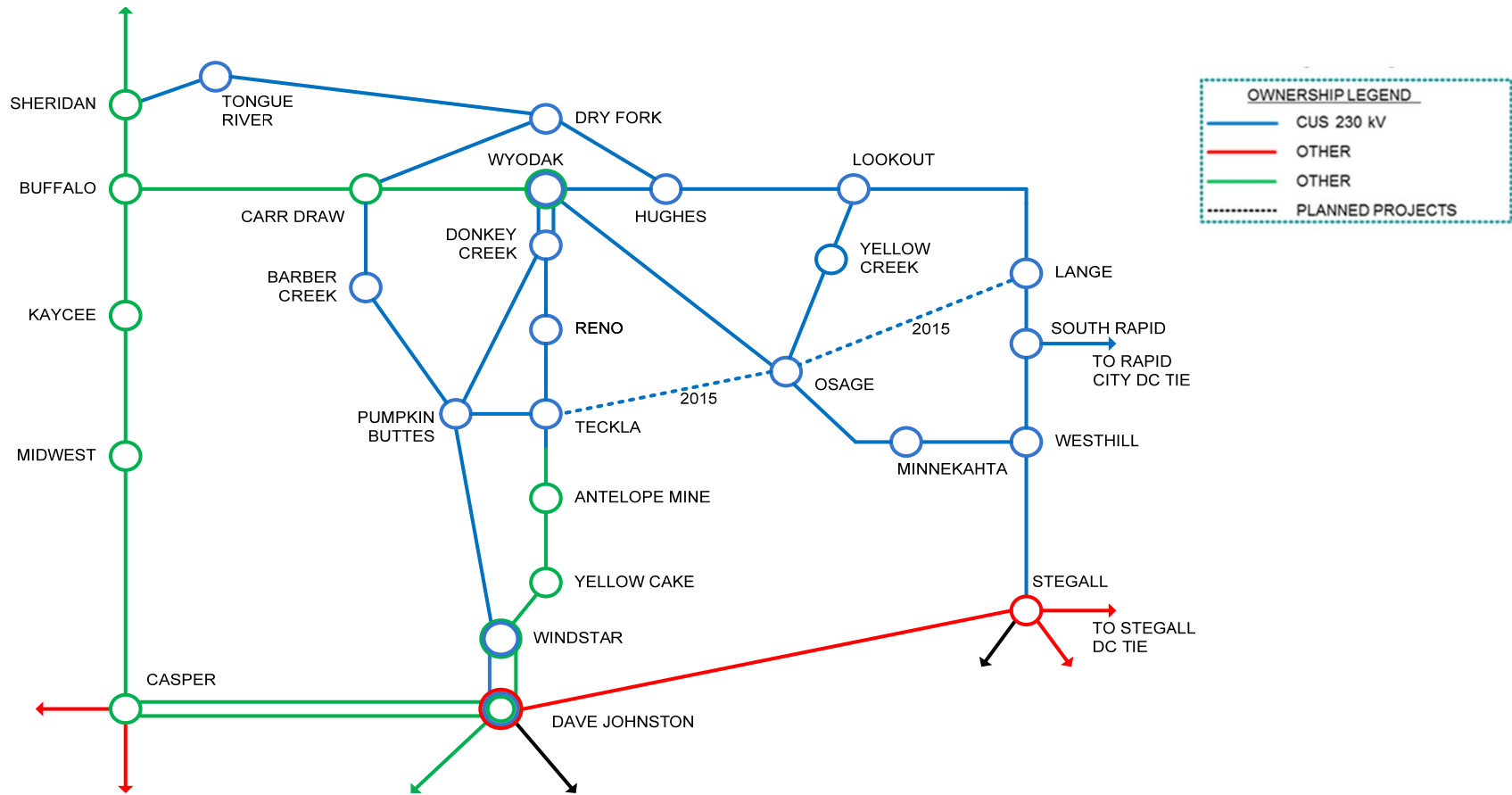
- BHP at a Glance
- Project Need
- Project Overview
- Routing Process
- Public Outreach
- Line Design
- Project Schedule
- Project Contacts

BHP at a Glance



- 68,500 electric customers
- Serving 31 communities in northeast Wyoming, southeast Montana and western South Dakota

Common Use System (CUS)



Common Use System (CUS) consists of three transmission owning utilities including Black Hills Power, Basin Electric Power Cooperative, and Powder River Energy Corporation.



Project Need

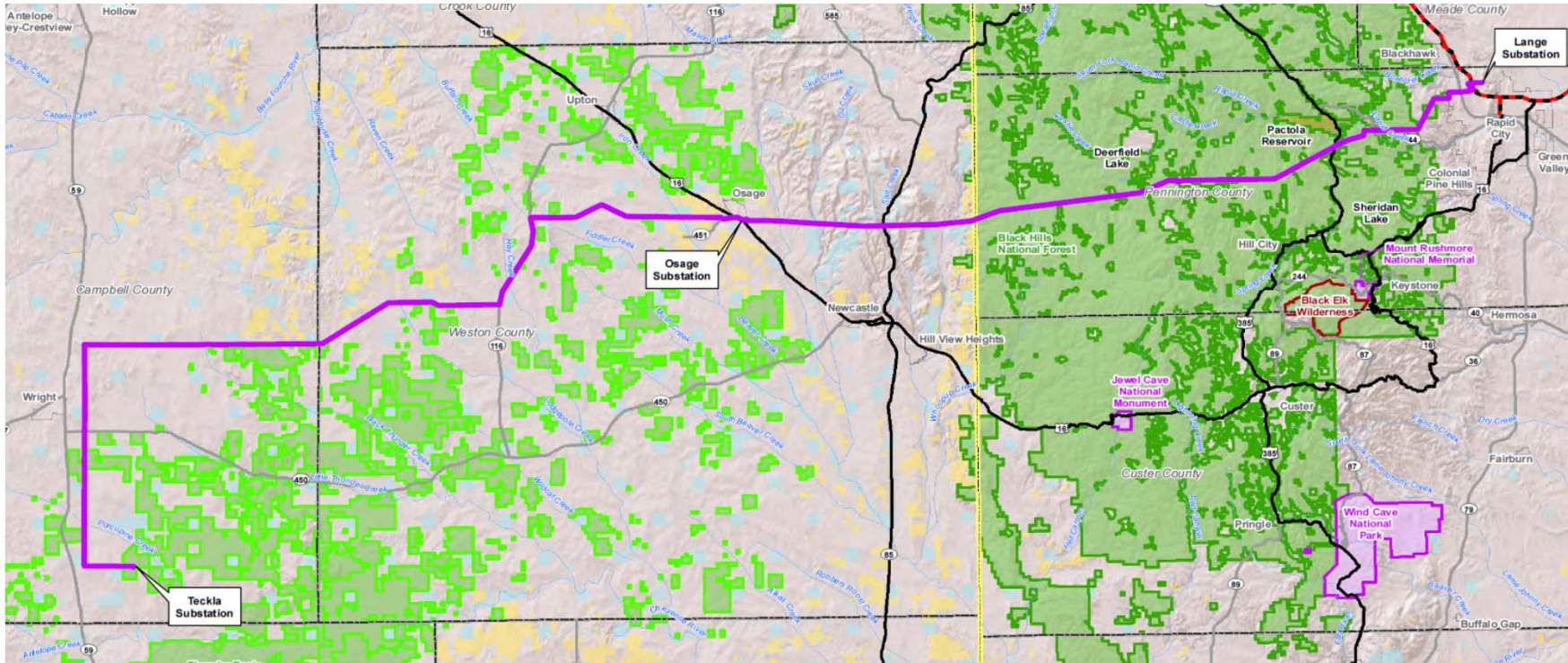
- The Common Use System Transmission Owners perform joint transmission planning studies to determine what facilities are required to meet the growth and reliability of the 230 kV transmission system that serves the customers in the region. The needs for this project are:
 - Strengthen & improve the reliability of the 230 kV transmission system
 - Support the future load growth of the CUS customers
 - Provide additional transmission capacity to meet the demand for electricity and economic development in the region

Project Overview

Black Hills Power would construct, own, and operate a new 230 kV line

- Approximately 144 miles
- Teckla Substation
 - Campbell County, Wyoming, approximately 50 miles south of Gillette
- Osage Substation
 - Weston County, Wyoming, near Osage
- Lange Substation
 - Pennington County, South Dakota, near Rapid City

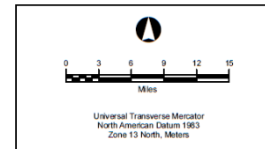
Project Overview



- Proposed Action
- Interstate
- US Highway
- State Highway
- Stream
- State Boundary
- County Boundary

- Legend**
- City or Town
 - Major Water Body
 - Federal Wilderness Area
 - National Park Boundary
 - National Grassland Boundary
 - National Forest Boundary

- Jurisdictional Land Ownership**
- Bureau of Land Management Land
 - Bureau of Reclamation Land
 - U.S. Forest Service Land
 - National Park Service Land
 - State Land



Teckla - Osage - Rapid City 230 kV Transmission Line		
OVERVIEW MAP		
Map Extent: South Dakota and Wyoming		
Date: 06-24-14		Author: mc
H:\SD-WY\Bases Map 24X36 062414.mxd		

Project Overview – South Dakota

South Dakota portion of the entire project

- Approximately 45.4 miles
 - Approximately 36.3 miles on Forest Service lands
 - Approximately 9.1 miles on private lands
- Majority of line route to follow previous 69 kv line Right-of-Way (ROW)

Line Route - South Dakota



Legend

- | | |
|---------------------------|----------------------------------|
| Project Components | Jurisdiction |
| ● Substation | ■ Black Hills National Forest |
| — Proposed Centerline | □ Bureau of Land Management |
| Transportation | □ State |
| Ⓜ State Route | ■ National Park Service |
| Ⓜ U.S. Highway | ■ Jewel Cave National Monument |
| Ⓜ Secondary Road | Administrative Boundaries |
| — Railroad | □ State Boundary |
| ■ Public Airport | □ County Boundary |
| | □ City Boundary |



Routing Process

Under the National Environmental Policy Act (NEPA) an Environmental Impact Statement (EIS) was performed.

- Federal Agencies involved with the EIS:
 - Black Hills National Forest (BHNF)
 - Thunder Basin National Grasslands (TBNG)
 - Bureau of Land Management (BLM)
- Process started in 2010
- Approximately 36.3 miles on Forest Service
- Routing Objectives:
 - Identify potential routes that have minimal impact to people and the environment
 - Utilize existing right-of-way
 - Minimize the total length

Public Outreach

- October 2009 - Kick off meeting with BHNF
- February 2010 – Kick off meeting with BLM
- June 2010 – Project Notification Packets to County Commissions
- June 29, 2010 – Rapid City Public Open House (BHP)
- September 16, 2010 – Rapid City Public Open House (BHP)
- May 16, 2011 - Rapid City Public Open House (BHP)
- Fall 2011 – 3,000 Scoping Notification Letters (USFS)
- September 20, 2011 – Rapid City Public Meeting (BHNF)
- January 13, 2014 – Rapid City Public Meeting (BHNF) Federal Agencies

Line Design

ROW width

- 100 to 125 feet

Span Lengths

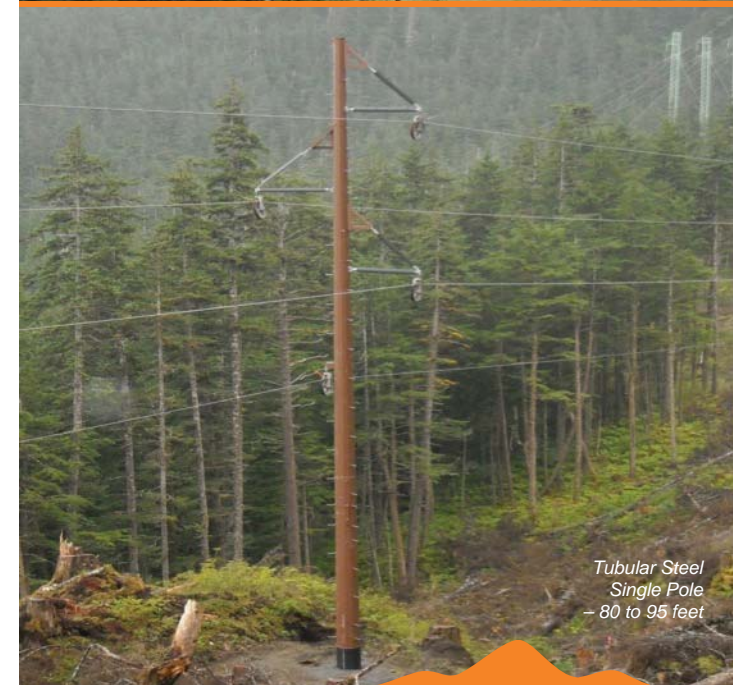
- 800 to 900 feet

Construction type

- H-Frame – 65 to 75 feet
- Single Pole – 80 to 95 feet

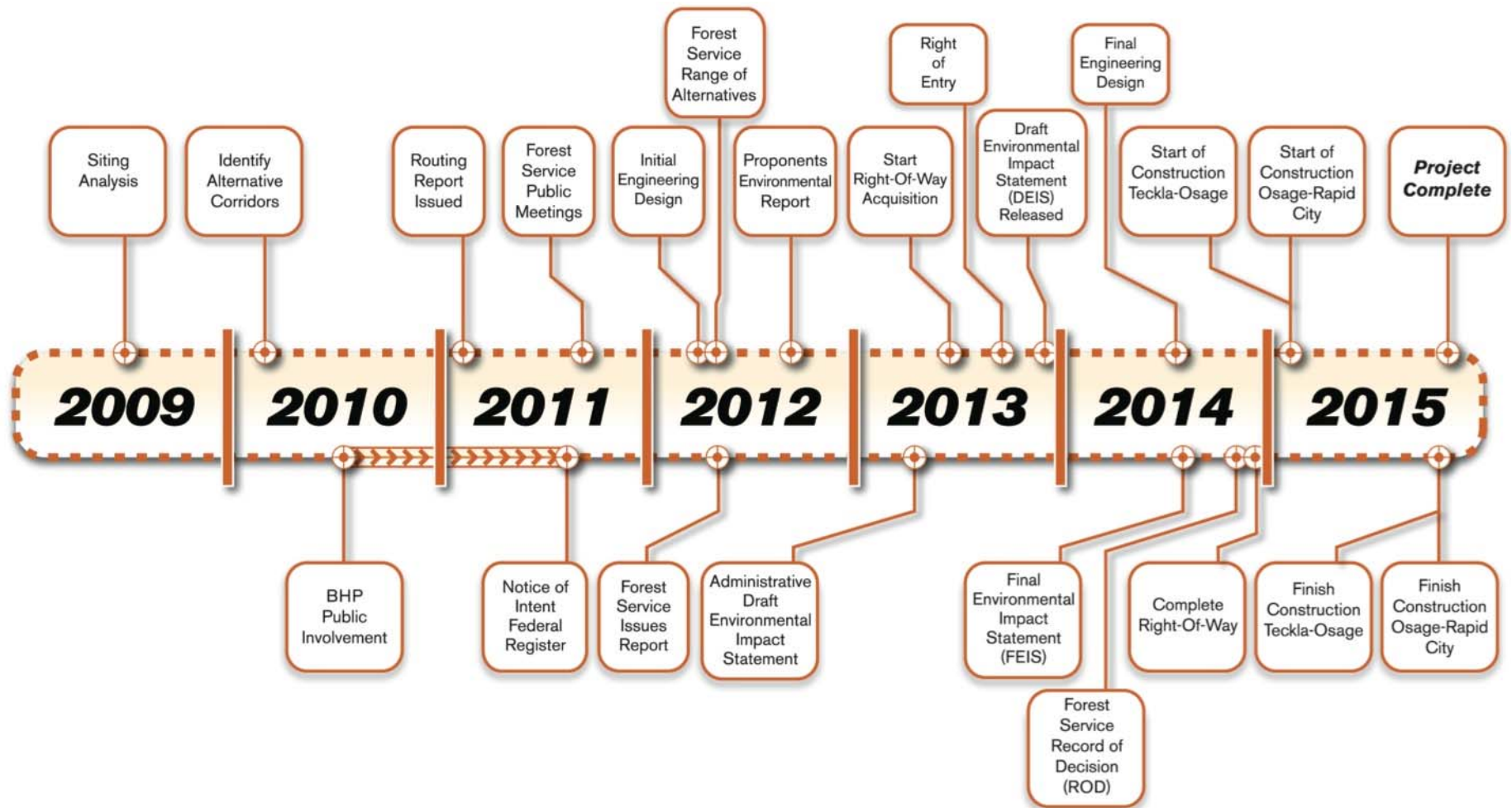


*Wood H-Frame
– 65 to 75 feet*



*Tubular Steel
Single Pole
– 80 to 95 feet*

Project Schedule



Project Contacts

Black Hills Power

Mark Carda

Project Manager

(605) 721-2274

Mark.Carda@blackhillscorp.com

Mutch Usera

Sr. External Affairs Manager

(605) 464-1476

Mutch.Usera@blackhillscorp.com

BHP Project Website

www.blackhillspower.com/in-your-neighborhood/transmission-distribution/transmission-projects

SDPUC Website

<http://www.puc.sd.gov/Dockets/Electric/2014/el14-061.aspx>