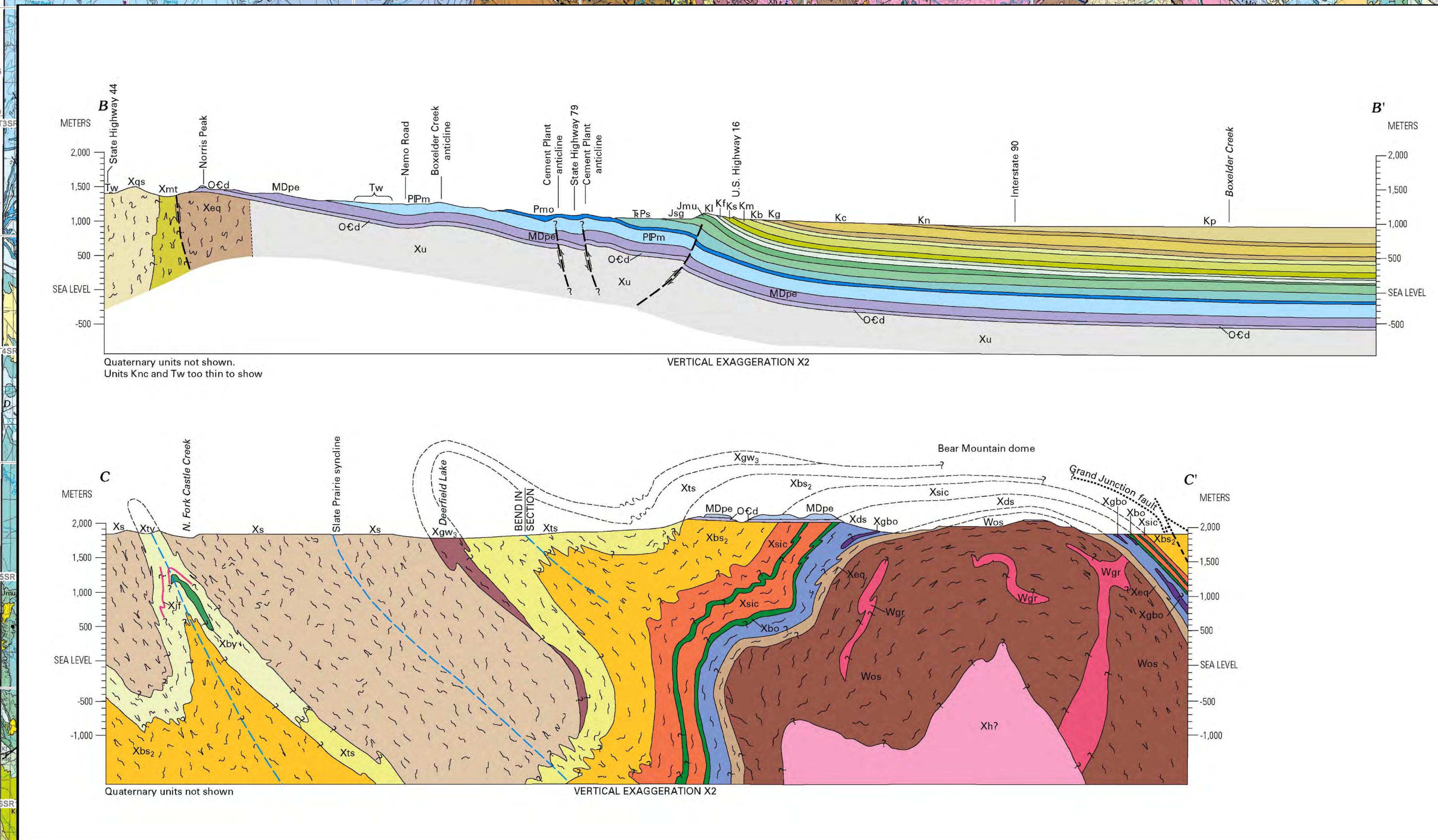
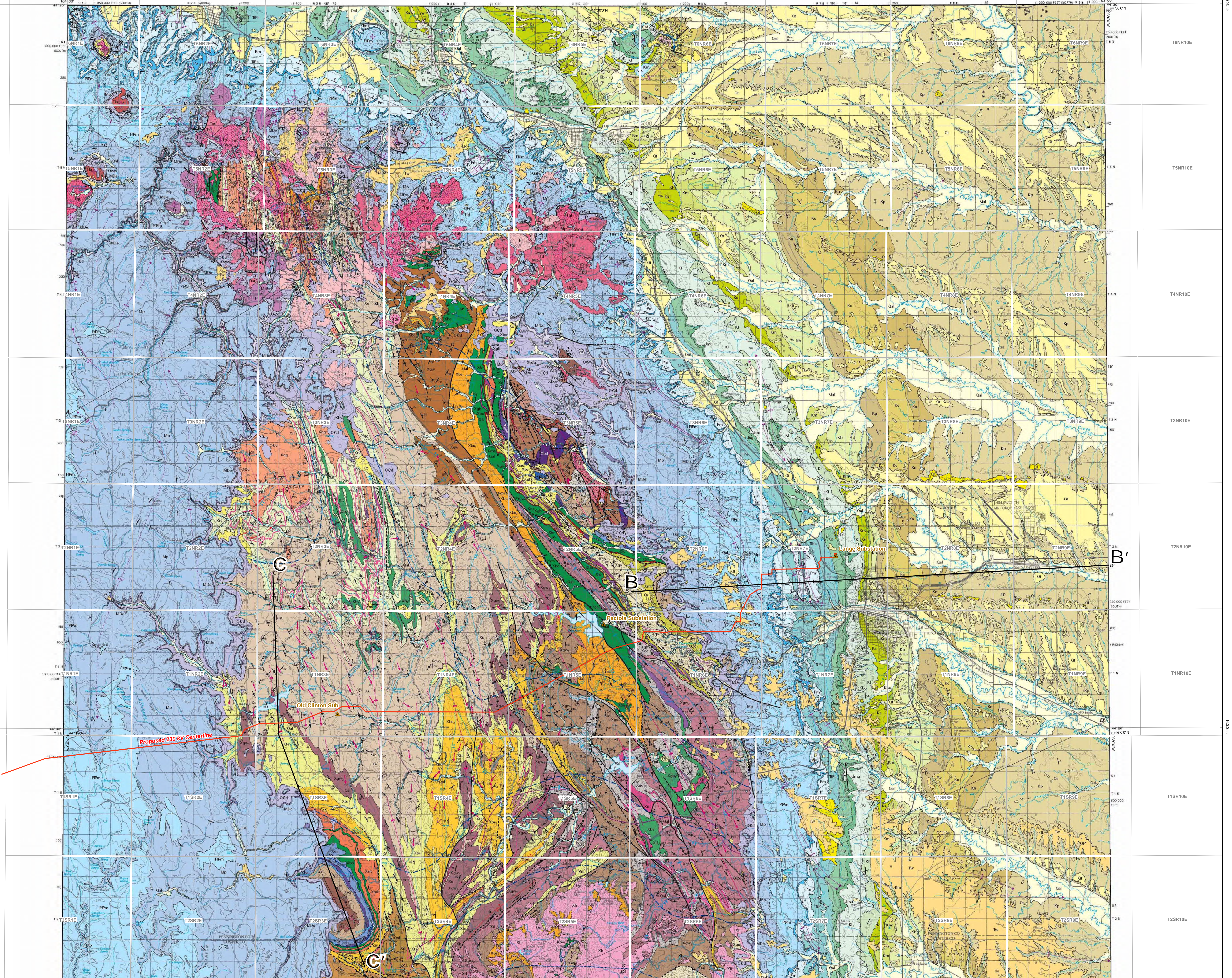


Figure 2 - Geologic Map of the Central Black Hills

USGS U.S. DEPARTMENT OF THE INTERIOR U.S. GEOLOGICAL SURVEY

Prepared in cooperation with the SOUTH DAKOTA SCHOOL OF MINES AND TECHNOLOGY FOUNDATION



U.S. Geological Survey, Reston, Virginia, 2007. Prepared in cooperation with the South Dakota School of Mines and Technology Foundation. This map is a derivative work of the USGS National Geologic Map Act (NGMA) project. The NGMA project is a cooperative effort between the USGS and the South Dakota School of Mines and Technology Foundation. The NGMA project is a cooperative effort between the USGS and the South Dakota School of Mines and Technology Foundation.

SCALE 1:100,000
NATIONAL GEODETIC DATUM OF 1983
CONTOUR INTERVAL: 50 METERS
VERTICAL EXAGGERATION: X2

Manuscript approved for publication September 25, 2007. Statewide Geologic Map of South Dakota. U.S. Geological Survey, Reston, Virginia, 2007. Prepared in cooperation with the South Dakota School of Mines and Technology Foundation.

T7SR1E T7SR2E T7SR3E T7SR4E T7SR5E T7SR6E T7SR7E T7SR8E T7SR9E T40NR48W T40NR47W

44°30'N 44°20'N 44°10'N 44°00'N 43°50'N 43°40'N 43°30'N 43°20'N 43°10'N 43°00'N

100000 FEET 10 20 30 40 50 60 70 80 90 100 110 120 130 140 150 160 170 180 190 200 210 220 230 240 250 260 270 280 290 300 310 320 330 340 350 360 370 380 390 400 410 420 430 440 450 460 470 480 490 500 510 520 530 540 550 560 570 580 590 600 610 620 630 640 650 660 670 680 690 700 710 720 730 740 750 760 770 780 790 800 810 820 830 840 850 860 870 880 890 900 910 920 930 940 950 960 970 980 990 1000