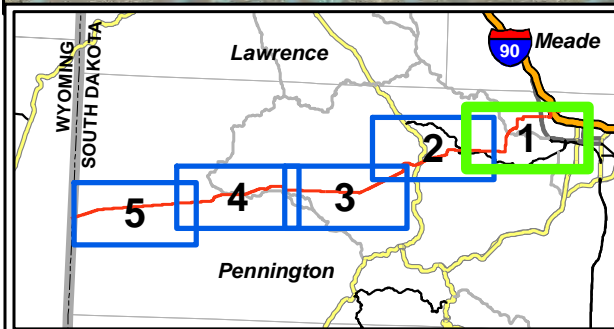
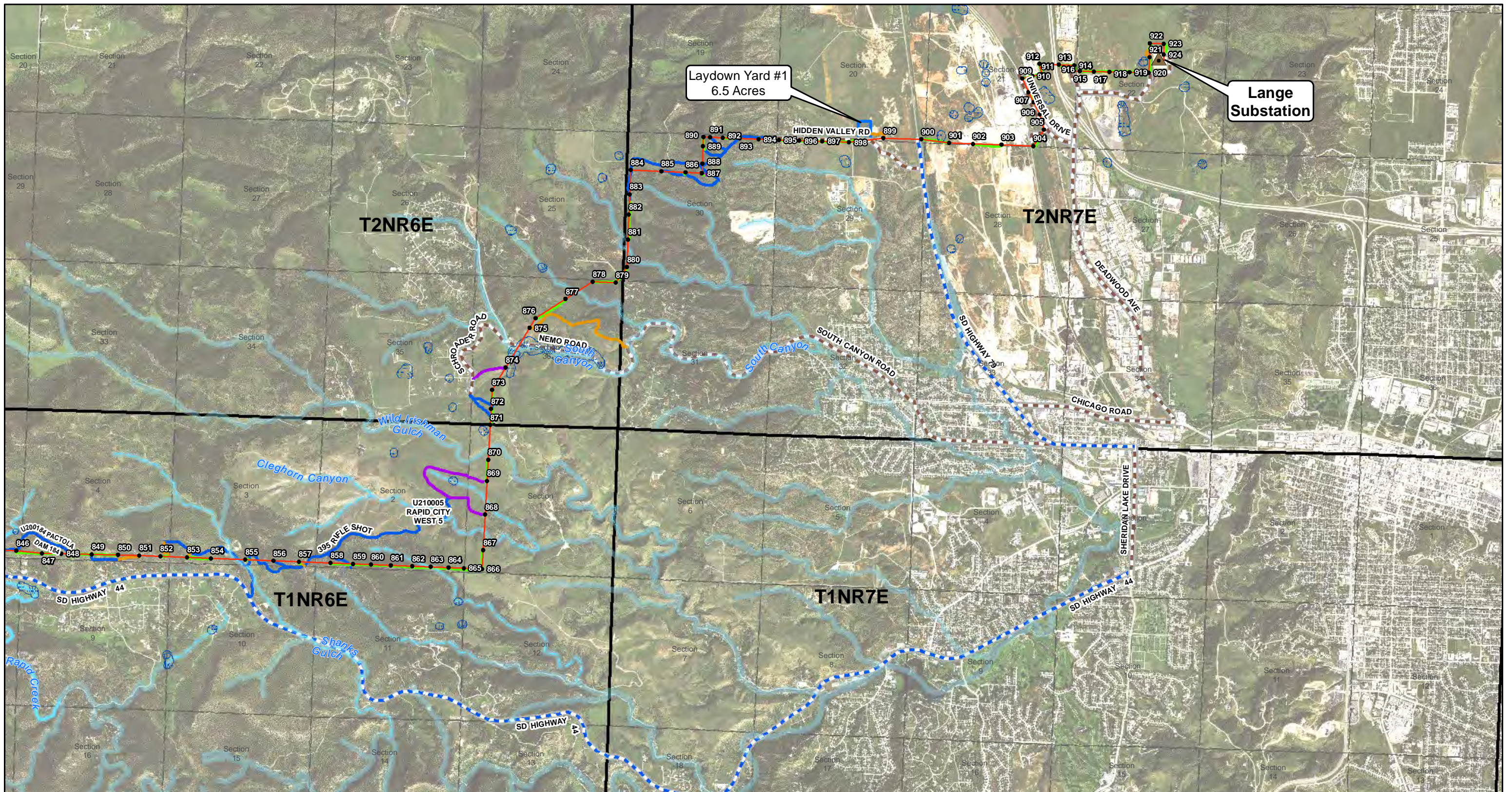


Appendix G

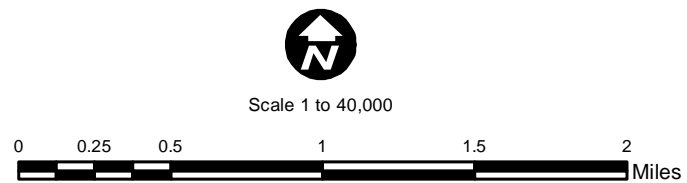
General Site Maps (Location, Waterbodies, Laydown Yards)



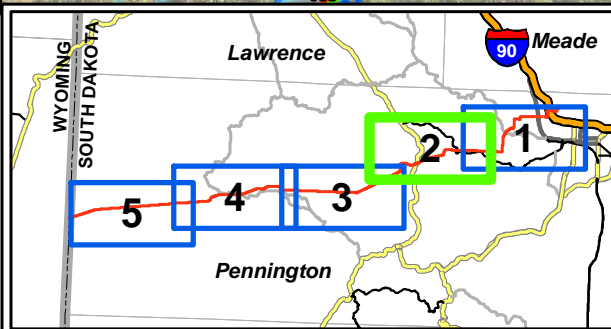
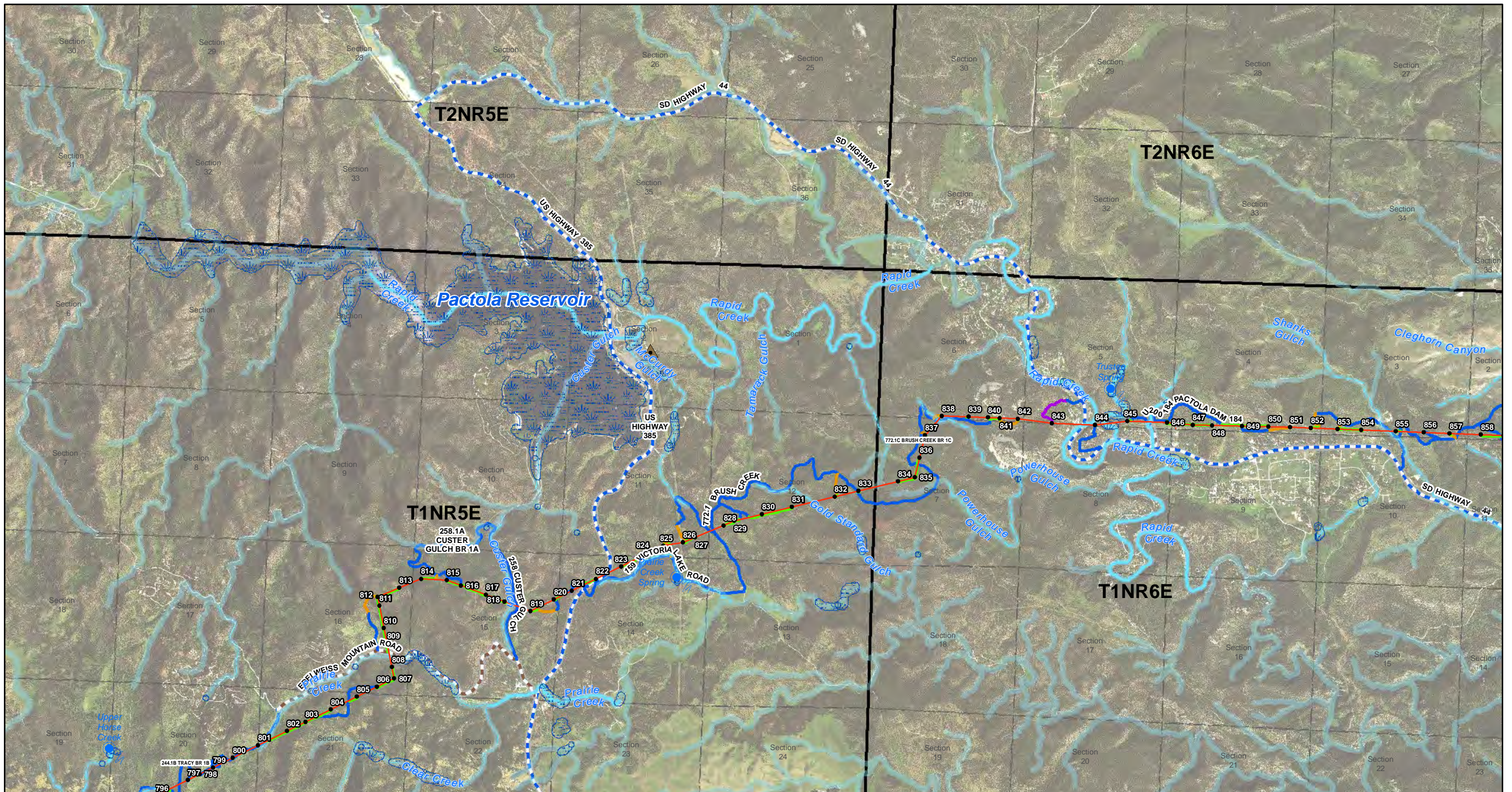
BLACK HILLS POWER, INC.
TECKLA-OSAGE-LANGE
230 KV TRANSMISSION LINE

Page 1 of 5
 Date: 6/21/2016

LANGE TO SOUTH DAKOTA BORDER - SWPPP
ACCESS ROADS, SPRINGS, FENS, WETLANDS AND STREAMS
PENNINGTON COUNTY, SOUTH DAKOTA



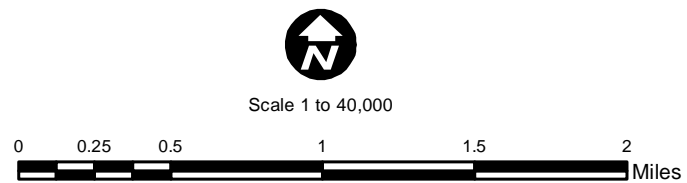
- | | | | |
|----------------------------|--|----------------------------------|-----------------------------------|
| Hydrologic Features | | Construction Access Roads | |
| WETLAND | | MAJOR ROADS | |
| | Springs, Wetlands and Fens - 100 foot buffer | | State Highway |
| | Springs | | County Road |
| STREAMS | | PRELIMINARY ACCESS ROADS | |
| | Perennial | | Existing ROW/Overland Travel |
| | Intermittent | | Existing road - may need improved |
| | Ephemeral | | Overland Travel - Outside ROW |
| | Swale | | New Spur Road |
| | 100 foot stream buffer | | |



BLACK HILLS POWER, INC.
TECKLA-OSAGE-LANGE
230 KV TRANSMISSION LINE

LANGE TO SOUTH DAKOTA BORDER - SWPPP
 ACCESS ROADS, SPRINGS, FENS, WETLANDS AND STREAMS
 PENNINGTON COUNTY, SOUTH DAKOTA

Page 2 of 5
 Date: 6/21/2016

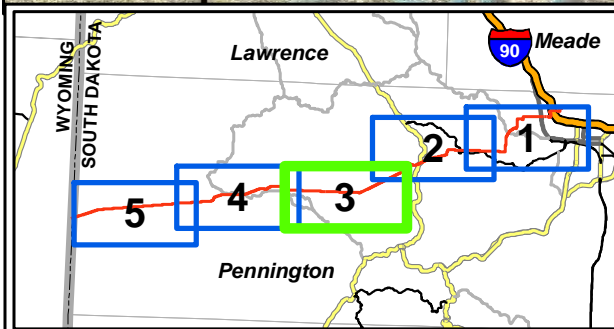
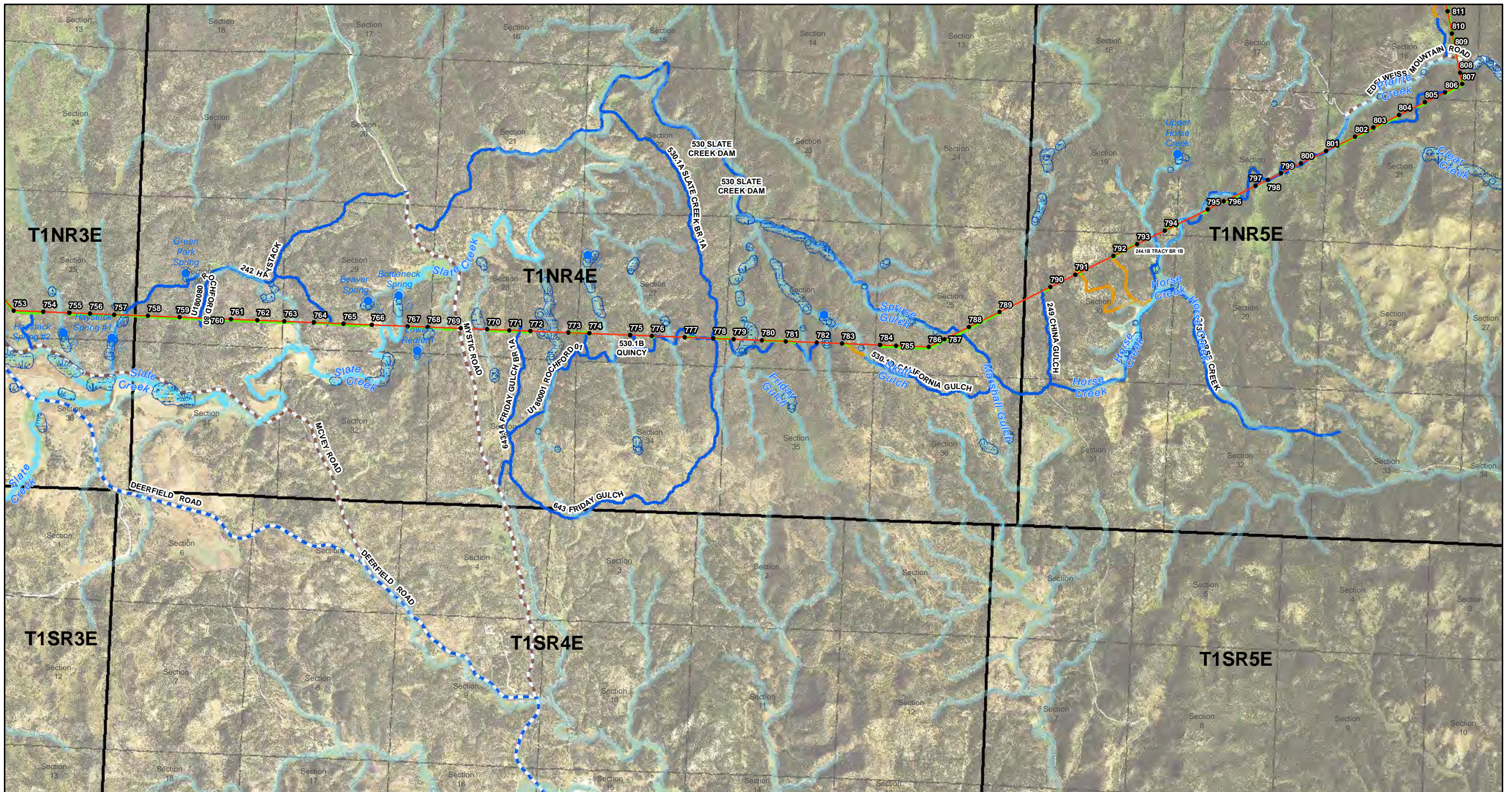


Hydrologic Features

- WETLAND**
 - Springs, Wetlands and Fens - 100 foot buffer
 - Springs
- STREAMS**
 - Perennial
 - Intermittent
 - Ephemeral
 - Swale
 - 100 foot stream buffer

Construction Access Roads

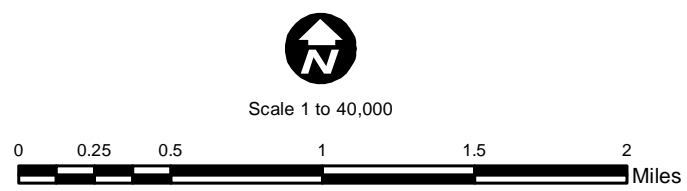
- MAJOR ROADS**
 - State Highway
 - County Road
- PRELIMINARY ACCESS ROADS**
 - Existing ROW/Overland Travel
 - Existing road - may need improved
 - Overland Travel - Outside ROW
 - New Spur Road



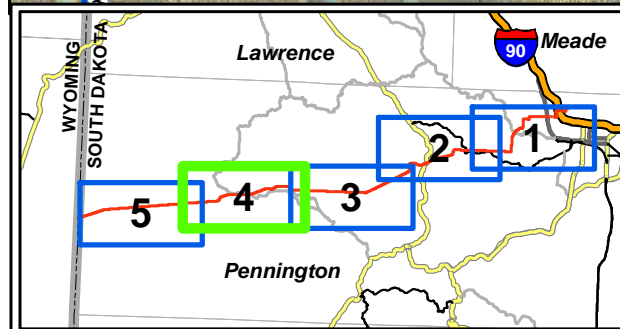
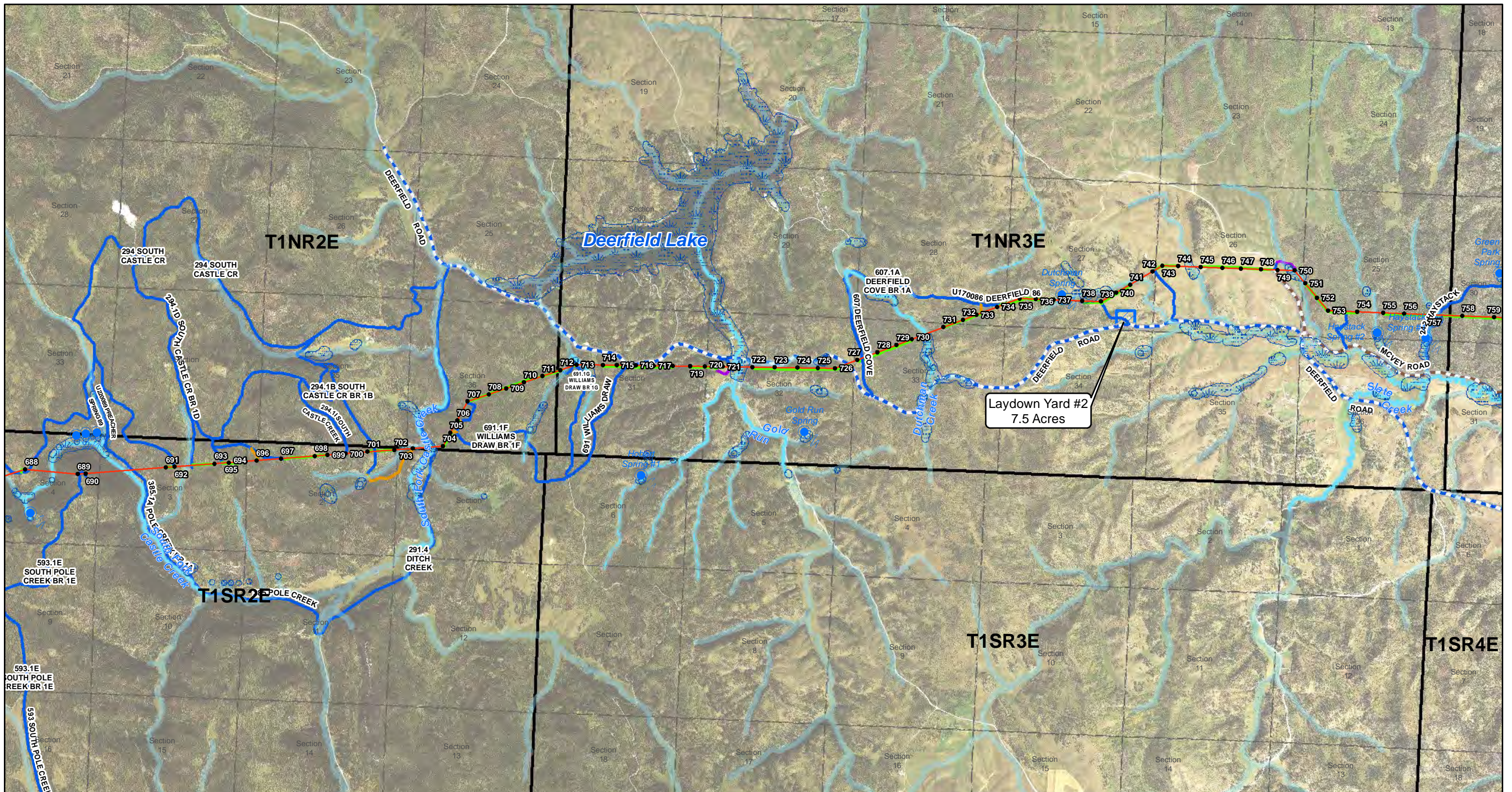
BLACK HILLS POWER, INC.
 TECKLA-OSAGE-LANGE
 230 KV TRANSMISSION LINE

LANGE TO SOUTH DAKOTA BORDER - SWPPP
 ACCESS ROADS, SPRINGS, FENS, WETLANDS AND STREAMS
 PENNINGTON COUNTY, SOUTH DAKOTA

Page 3 of 5
 Date: 6/21/2016



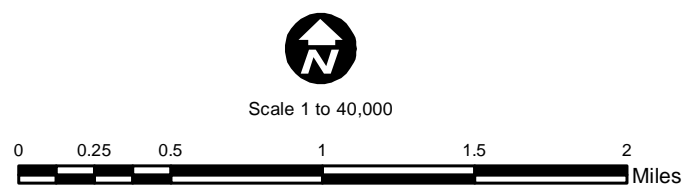
Hydrologic Features		Construction Access Roads	
WETLAND		MAJOR ROADS	
	Springs, Wetlands and Fens - 100 foot buffer		State Highway
	Springs		County Road
STREAMS		PRELIMINARY ACCESS ROADS	
	Perennial		Existing ROW/Overland Travel
	Intermittent		Existing road - may need improved
	Ephemeral		Overland Travel - Outside ROW
	Swale		New Spur Road
	100 foot stream buffer		



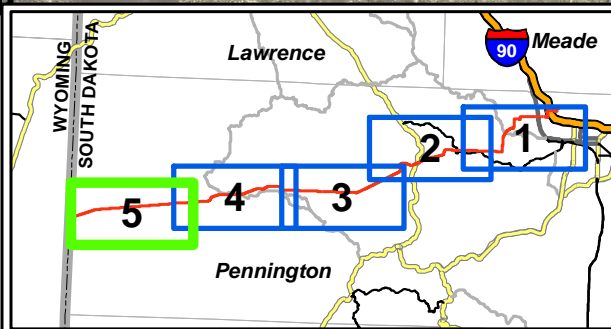
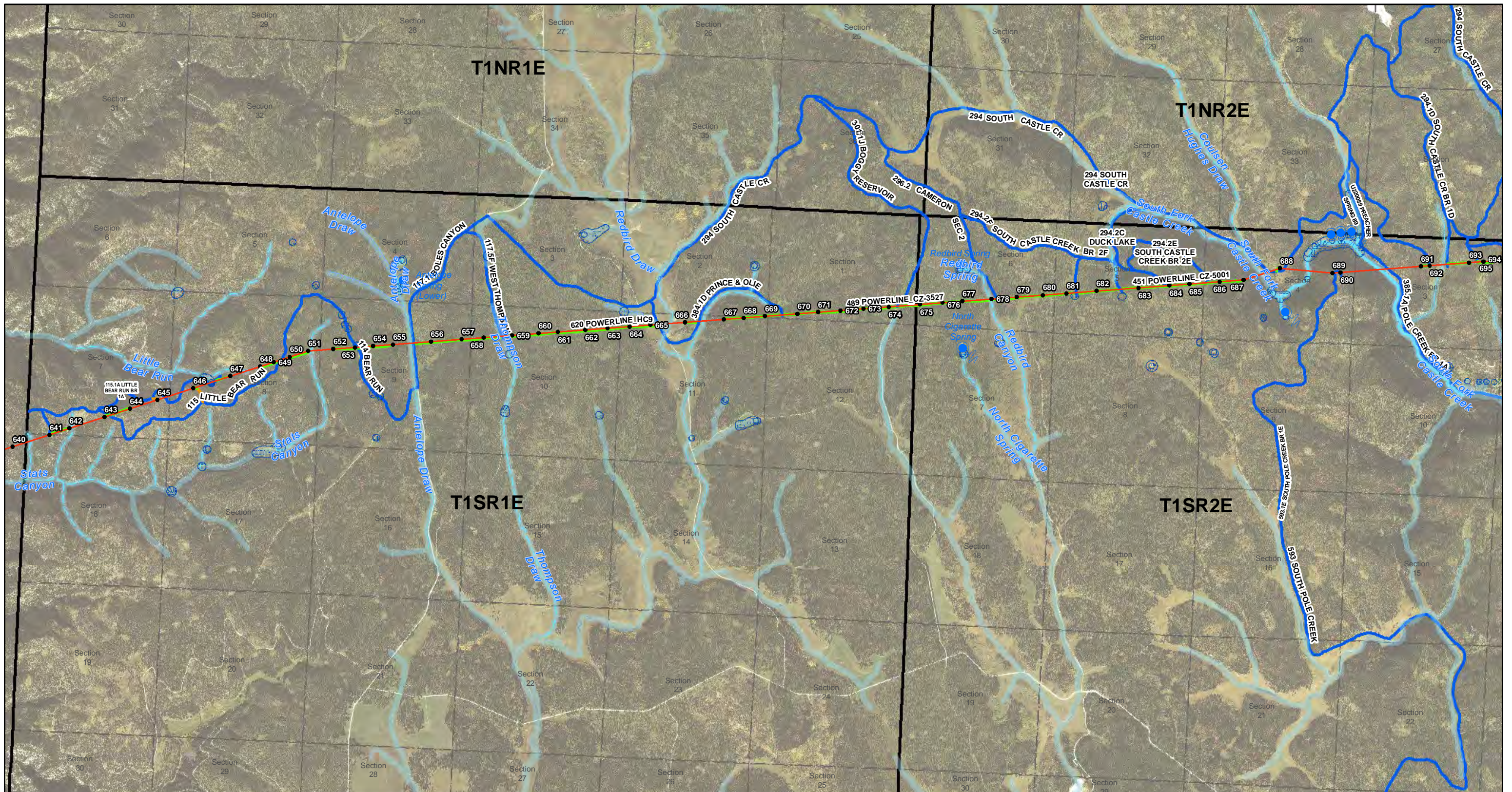
BLACK HILLS POWER, INC.
 TECKLA-OSAGE-LANGE
 230 kV TRANSMISSION LINE

Page 4 of 5
 Date: 6/21/2016

LANGE TO SOUTH DAKOTA BORDER - SWPPP
 ACCESS ROADS, SPRINGS, FENS, WETLANDS AND STREAMS
 PENNINGTON COUNTY, SOUTH DAKOTA



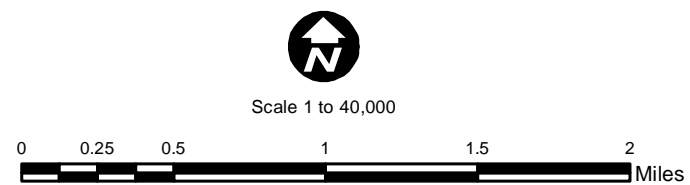
Hydrologic Features		Construction Access Roads	
WETLAND		MAJOR ROADS	
	Springs, Wetlands and Fens - 100 foot buffer		State Highway
	Springs		County Road
STREAMS		PRELIMINARY ACCESS ROADS	
	Perennial		Existing ROW/Overland Travel
	Intermittent		Existing road - may need improved
	Ephemeral		Overland Travel - Outside ROW
	Swale		New Spur Road
	100 foot stream buffer		



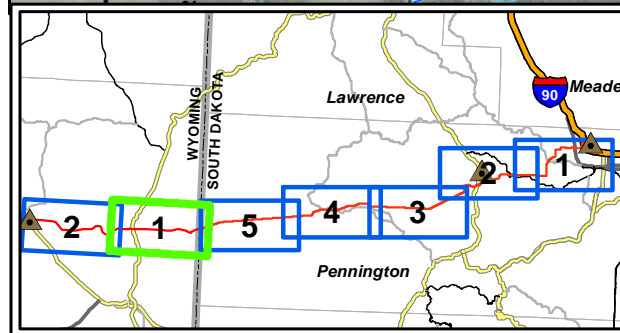
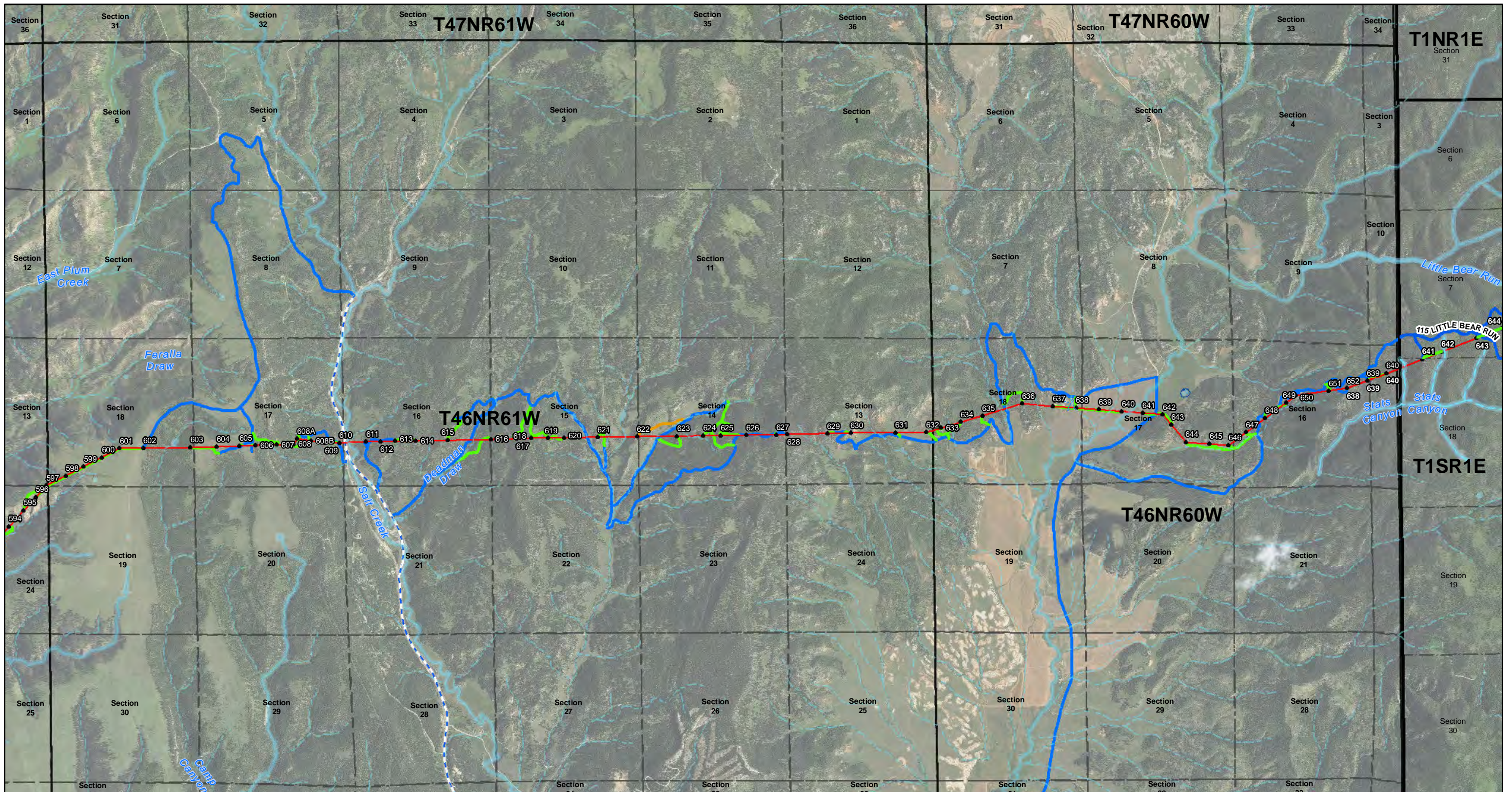
BLACK HILLS POWER, INC.
 TECKLA-OSAGE-LANGE
 230 KV TRANSMISSION LINE

LANGE TO SOUTH DAKOTA BORDER - SWPPP
 ACCESS ROADS, SPRINGS, FENS, WETLANDS AND STREAMS
 PENNINGTON COUNTY, SOUTH DAKOTA

Page 5 of 5
 Date: 6/21/2016



- | | | | |
|----------------------------|--|----------------------------------|-----------------------------------|
| Hydrologic Features | | Construction Access Roads | |
| WETLAND | | MAJOR ROADS | |
| | Springs, Wetlands and Fens - 100 foot buffer | | State Highway |
| | Springs | | County Road |
| STREAMS | | PRELIMINARY ACCESS ROADS | |
| | Perennial | | Existing ROW/Overland Travel |
| | Intermittent | | Existing road - may need improved |
| | Ephemeral | | Overland Travel - Outside ROW |
| | Swale | | New Spur Road |
| | 100 foot stream buffer | | |

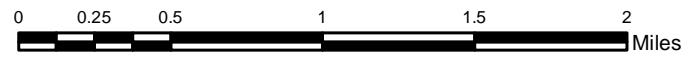


BLACK HILLS POWER, INC.
 TECKLA-OSAGE-LANGE
 230 KV TRANSMISSION LINE

SOUTH DAKOTA BORDER TO OSAGE - SWPPP
 ACCESS ROADS, SPRINGS, FENS, WETLANDS AND STREAMS
 WESTON COUNTY, WYOMING

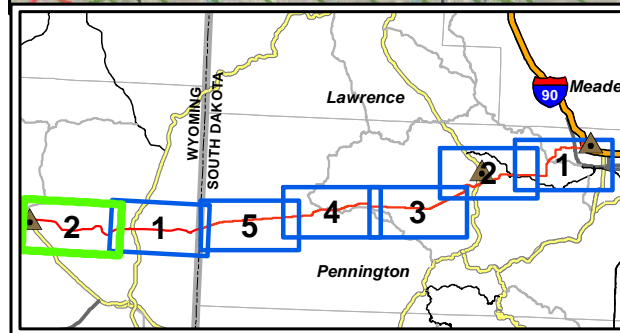
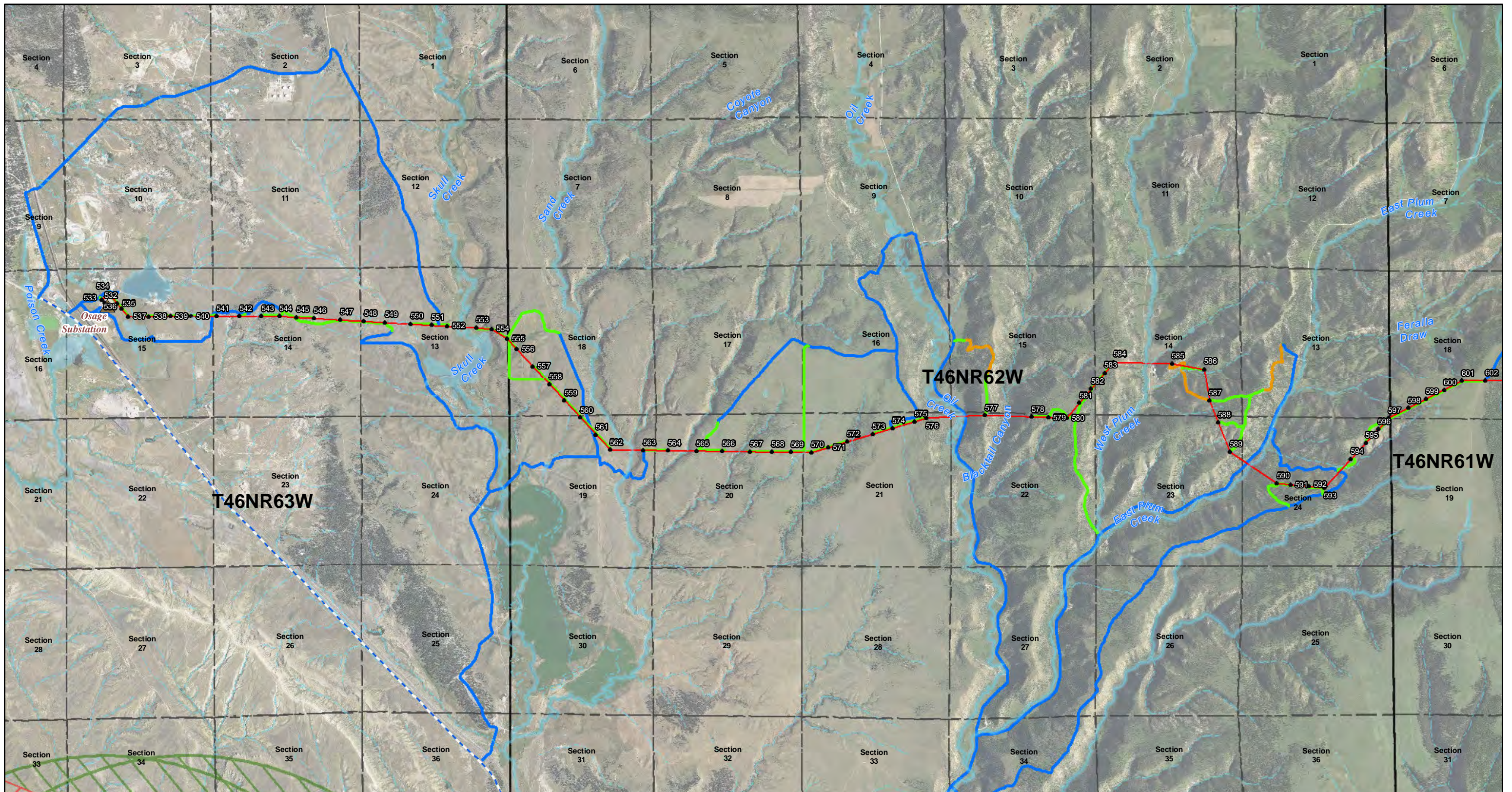


Scale 1 to 40,000



Hydrologic Features		Construction Access Roads	
WETLAND		MAJOR ROADS	
	Springs, Wetlands and Fens - 100 foot buffer		State or County Road
	Springs	PRELIMINARY ACCESS ROADS	
STREAMS			Existing ROW/Overland Travel
	Perennial		Existing road - may need improved
	Intermittent		New Spur Road
	Ephemeral		
	Swale		
	100 foot stream buffer		

Page 1 of 2
 Date: 6/22/2016

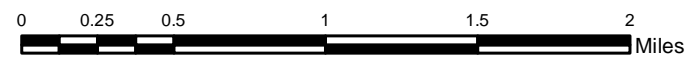


BLACK HILLS POWER, INC.
 TECKLA-OSAGE-LANGE
 230 KV TRANSMISSION LINE

SOUTH DAKOTA BORDER TO OSAGE - SWPPP
 ACCESS ROADS, SPRINGS, FENS, WETLANDS AND STREAMS
 WESTON COUNTY, WYOMING



Scale 1 to 40,000



Hydrologic Features

- WETLAND**
 - Spring, Wetlands and Fens - 100 foot buffer
 - Springs
- STREAMS**
 - Perennial
 - Intermittent
 - Ephemeral
 - Swale
 - 100 foot stream buffer

Construction Access Roads

- MAJOR ROADS**
 - State or County Road
- PRELIMINARY ACCESS ROADS**
 - Existing ROW/Overland Travel
 - Existing road - may need improved
 - New Spur Road