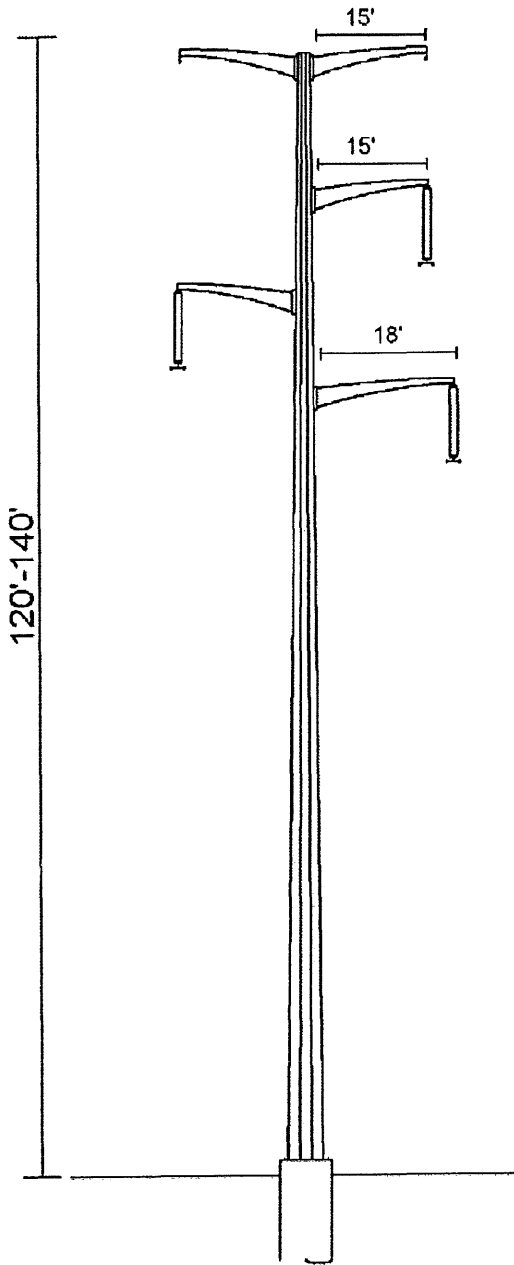


**Single steel poles** (weathering finish) designed for possible future 2<sup>nd</sup> circuit with arms on both sides of the pole for north portion of route previously acquired by OTP and recertified by the SDPUC. Note - for angles greater than 15 degrees, a 2<sup>nd</sup> pole would be added adjacent to the original pole if/when the 2<sup>nd</sup> circuit is built. Wires for the 1<sup>st</sup> circuit would be strung from arms on one side of the pole with this project. If a future 2<sup>nd</sup> circuit is added in the future, wires would be strung from arms on the other side.



**Single steel poles** (weathering finish) for south portion of route (except as noted where crossing under existing WAPA transmission line). For this area, 2 pole structures with horizontal configuration (H-Frame) will be used.