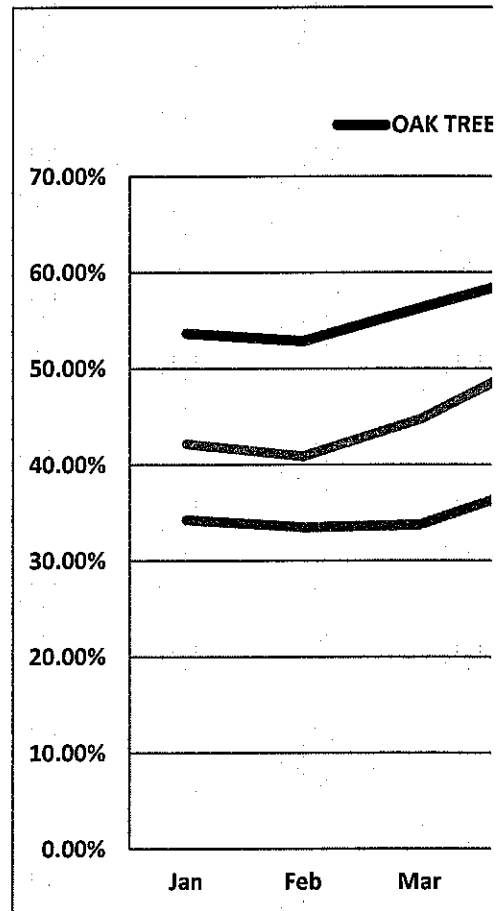


	TITAN			25 MW			OAK TREE		
	2010	CAP FCTR	2011	CAP FCTR	2012	CAP FCTR			
31	5117	27.51%	7,916	42.56%	10,489	56.39%	Jan	6,831	
28	3823	22.76%	9,265	55.15%	7,515	44.73%	Feb	6,077	
31	6491	34.90%	7,963	42.81%	10,499	56.45%	Mar	7,165	
30	9221	51.23%	8,971	49.84%	9,303	51.68%	Apr	7,351	
31	9214	49.54%	9,310	50.05%	8,043	43.24%	May	6,141	
30	5595	31.08%	6,710	37.28%	7,661	42.56%	Jun	7,021	
31	5638	30.31%	5,583	30.02%	6,137	32.99%	Jul	7,121	
31	7397	39.77%	6,030	32.42%	6,059	32.58%	Aug	7,206	
30	8144	45.24%	6,473	35.96%	6,254	34.74%	Sep	5,388	
31	8245	44.33%	9,318	50.10%	8,244	44.32%	Oct	4,574	
30	7318	40.66%	9,890	54.94%	0	0.00%	Nov	5,213	
31	6240	33.55%	9,404	50.56%	0	0.00%	Dec	6,564	
	82443	37.65%	96833	44.22%	80204	43.97%	Total	76,652	

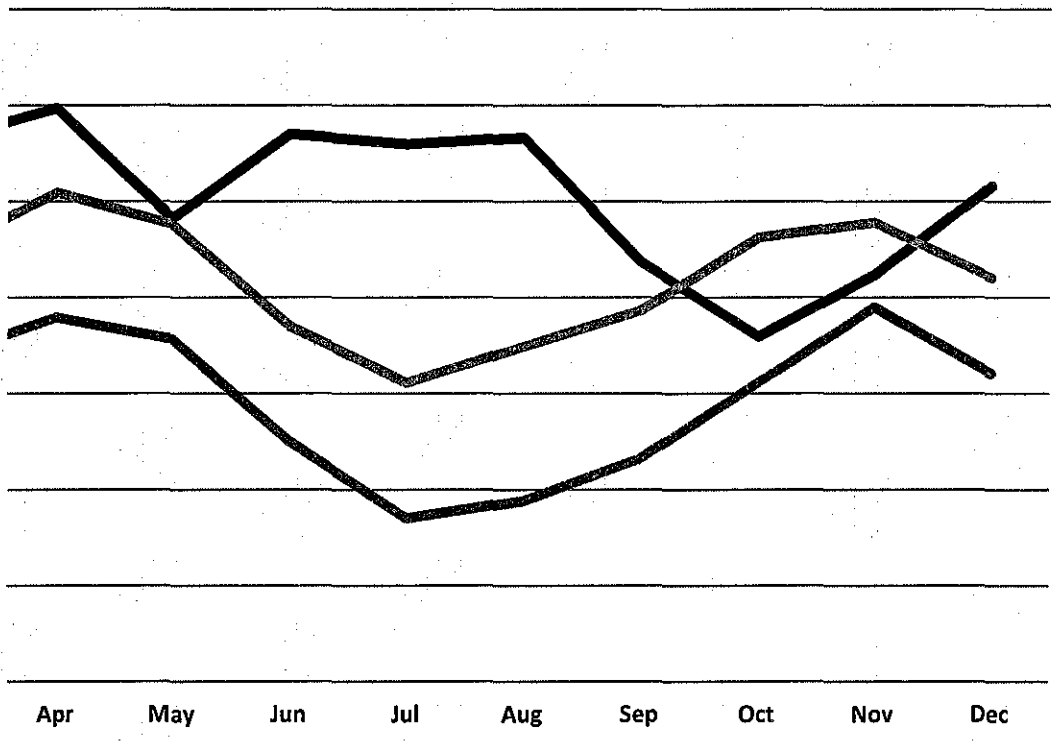


17.1 \* as provided by Oak Tree work sheet

CAP FCTR		TITAN 2010	TITAN 2011	TITAN 2012	TITAN 2010-2012 AVG	OAK TREE
53.69%	Jan	27.51%	42.56%	56.39%	42.15%	53.69%
52.88%	Feb	22.76%	55.15%	44.73%	40.88%	52.88%
56.32%	Mar	34.90%	42.81%	56.45%	44.72%	56.32%
59.70%	Apr	51.23%	49.84%	51.68%	50.92%	59.70%
48.27%	May	49.54%	50.05%	43.24%	47.61%	48.27%
57.02%	Jun	31.08%	37.28%	42.56%	36.97%	57.02%
55.97%	Jul	30.31%	30.02%	32.99%	31.11%	55.97%
56.64%	Aug	39.77%	32.42%	32.58%	34.92%	56.64%
43.76%	Sep	45.24%	35.96%	34.74%	38.65%	43.76%
35.95%	Oct	44.33%	50.10%	44.32%	46.25%	35.95%
42.34%	Nov	40.66%	54.94%		47.80%	42.34%
51.60%	Dec	33.55%	50.56%		42.05%	51.60%
51.17%		37.57%	44.31%	43.97%	42.00%	51.17%

### Monthly Capacity Factor

PRO FORMA    TITAN 2010-12 AVG    MISO 2010-12 AVG



MISO		MISO AVG	
2010	2011	2012	2010-12
0.313	0.283	0.431	34.23%
0.258	0.404	0.342	33.47%
0.318	0.304	0.389	33.70%
0.366	0.376	0.395	37.90%
0.318	0.387	0.364	35.63%
0.213	0.273	0.265	25.03%
0.18	0.162	0.168	17.00%
0.227	0.151	0.186	18.80%
0.27	0.196	0.23	23.20%
0.294	0.327		31.05%
0.369	0.41		38.95%
0.291	0.349		32.00%
			30.08%