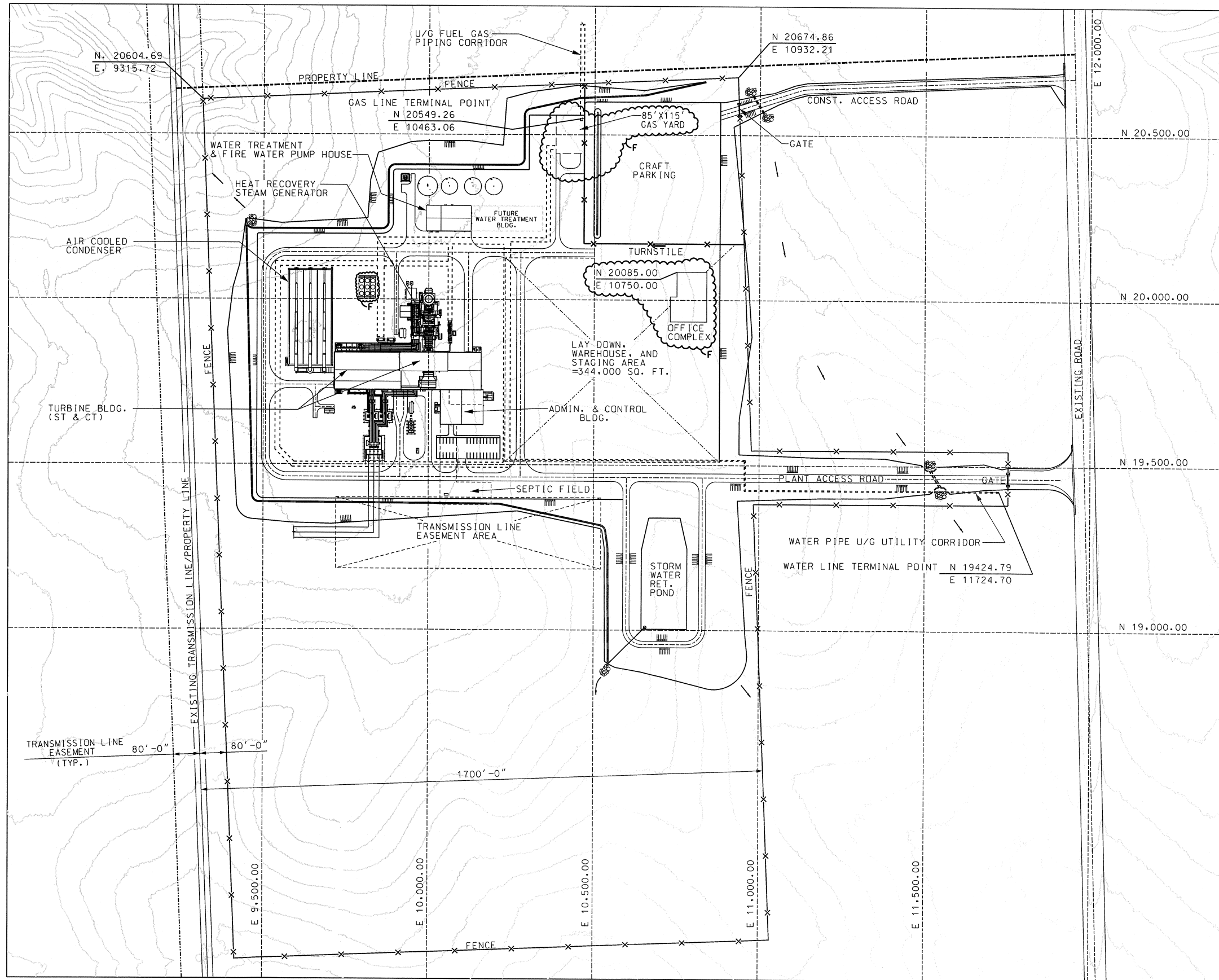


## VOLUME II

This page intentionally left blank.

# Appendix J: Final Pre-Construction General Arrangement of the Energy Conversion Facility

This page intentionally left blank.

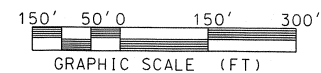


- REFERENCE DRAWINGS:**
- DCS-GA-100-0001 GENERAL ARRANGEMENT/PERSPECTIVE VIEW
  - DCS-GA-100-0003 GENERAL ARRANGEMENT/POWER BLOCK AREA
  - DCS-GA-100-0004 GENERAL ARRANGEMENT/TURBINE BUILDING OPERATING FLOOR PLAN
  - DCS-GA-100-0005 GENERAL ARRANGEMENT/TURBINE BUILDING GRADE FLOOR PLAN
  - DCS-GA-100-0006 GENERAL ARRANGEMENT/ELEVATION VIEW SECTION C-C & D-D
  - DCS-GA-100-0007 GENERAL ARRANGEMENT/ELEVATION VIEW SECTION A-A
  - DCS-GA-100-0008 GENERAL ARRANGEMENT/ELEVATION VIEW SECTION B-B
  - DCS-GA-100-0009 GENERAL ARRANGEMENT/ADMINISTRATION & CONTROL BUILDING

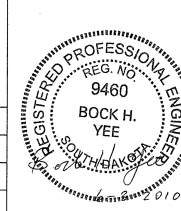
**LEGEND:**  
 = BERM



- NOTES :**
- TRUE NORTH COINCIDES WITH PLANT NORTH.
  - COORDINATE SYSTEM REFLECTS PLANT COORDINATE SYSTEM. SEE NOTE 3 FOR STATE COORDINATE REFERENCE POINT.
  - THE REFERENCE POINT AT THE CENTER OF UNIT 1 STACK IS SET AT PLANT COORDINATES N 20,000.00 / E 10,000.00, AND IS EQUIVALENT TO STATE COORDINATES N 224,615 / E 2,874,285.00.



REV.	DESCRIPTION	PREPARED	REVIEWED	APPROVED	DATE
F	ISSUED FOR PERMIT	A. MALDONADO	V. SHAH	B. YEE	06-03-2010
E	ISSUED FOR INFORMATION	A. MALDONADO	V. SHAH	B. YEE	02-26-2010
D	ISSUED FOR INFORMATION	V. SHAH	E. DUCDUC	B. YEE	07-16-2009



**Sargent & Lundy**

FILE NAME: DCS-GA-100-0002.DGN

CONTRACTOR/INSTALLER SHALL TAKE ALL APPROPRIATE PRECAUTIONS TO ENSURE THE SAFETY OF ALL PEOPLE LOCATED ON THE WORK SITE, INCLUDING CONTRACTOR'S/INSTALLER'S PERSONNEL (OR THAT OF ITS SUBCONTRACTOR(S)) PERFORMING THE WORK.

FACILITY:	DEER CREEK STATION	DESIGN BY:	V. SHAH	02-21-2009
LOCATION/UNIT:	1	DRAWN BY:	A. MALDONADO	02-21-2009
CONTRACT/DESIGNATION:	S&L PROJECT 12214	DESIGN CHG.:	E. DUCDUC	02-21-2009
<b>GENERAL ARRANGEMENT SITE DEVELOPMENT</b>		DRAWN FOR:	V. SHAH	02-21-2009
		APPROVED:	B. YEE	02-21-2009
SCALE: 1" = 150'-0"		VENDOR/ORIGINATED FROM:	N/A	
VENDOR DRAWING NO. ORIGINAL REV		N/A N/A		
BASIN DRAWING NO. REV. NO.		DCS-GA-100-0002 F		

