

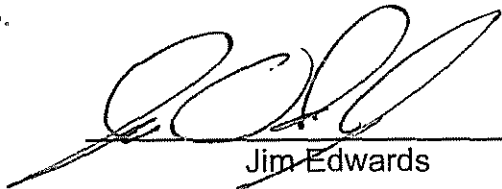
APPLICANT'S VERIFICATION

State of South Dakota)
) SS
 County of Lake)

Jim Edwards, being duly sworn, deposes and says that he is the Assistant General Manager of Operations for East River Electric Power Cooperative, Inc. and Project Manager for the Roswell 115 kV Line Tap.

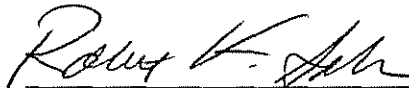
He states that he does not have personal knowledge of all of the facts recited in the foregoing Application, but the information in the Application has been gathered by and from employees of East River Electric Power Cooperative, Inc. and is believed to be accurate and reliable; and on that basis the information in the Application is verified by him as being true and accurate on behalf of East River Electric Power Cooperative, Inc.

Dated this 2 day of September , 2008.



Jim Edwards

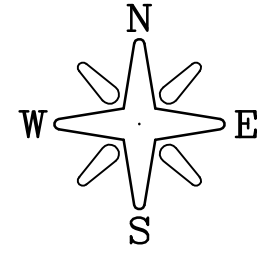
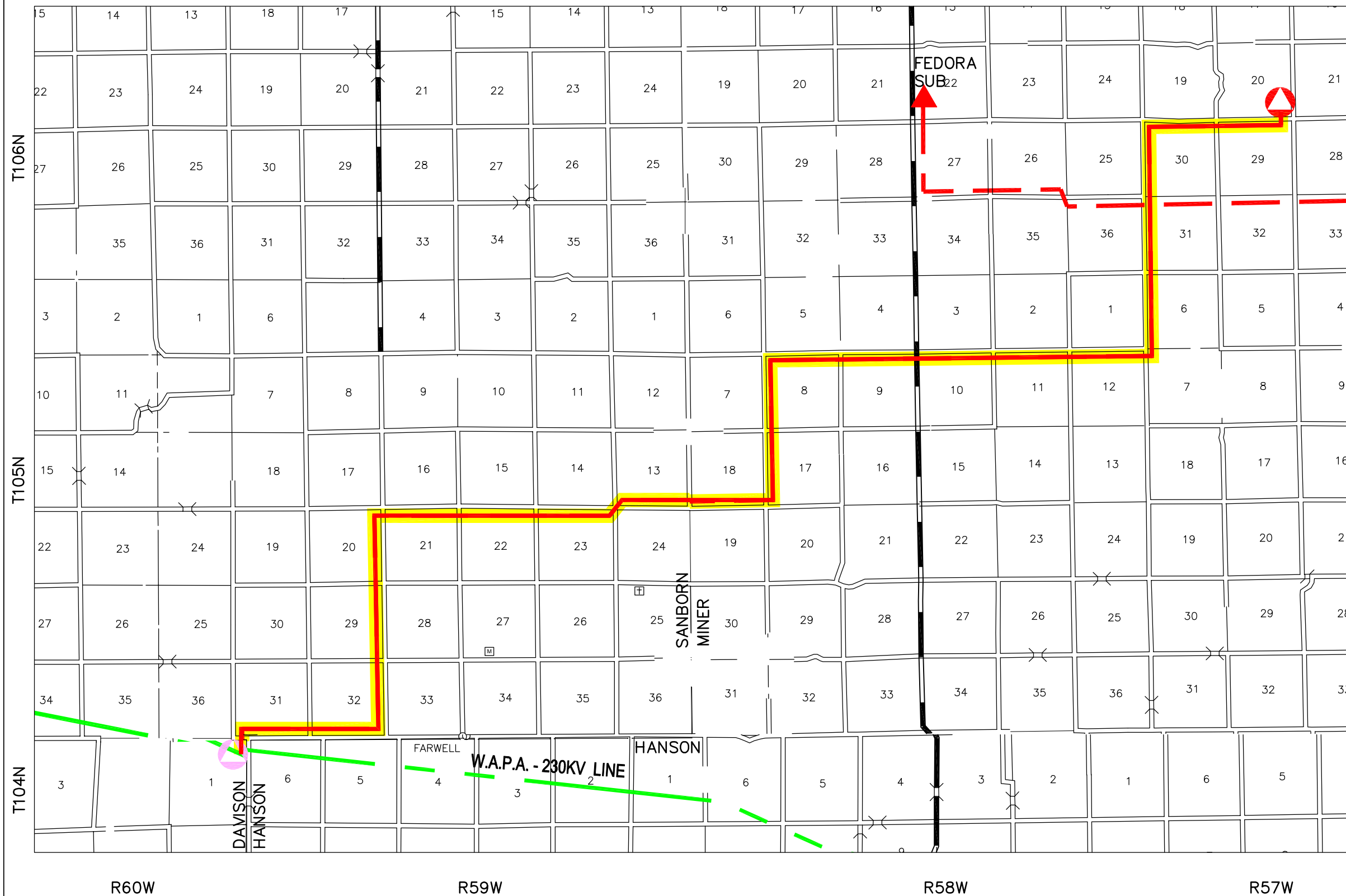
Subscribed and sworn to before me
 this 2nd day of September , 2008.



Robert K. Sahr
 Notary Public

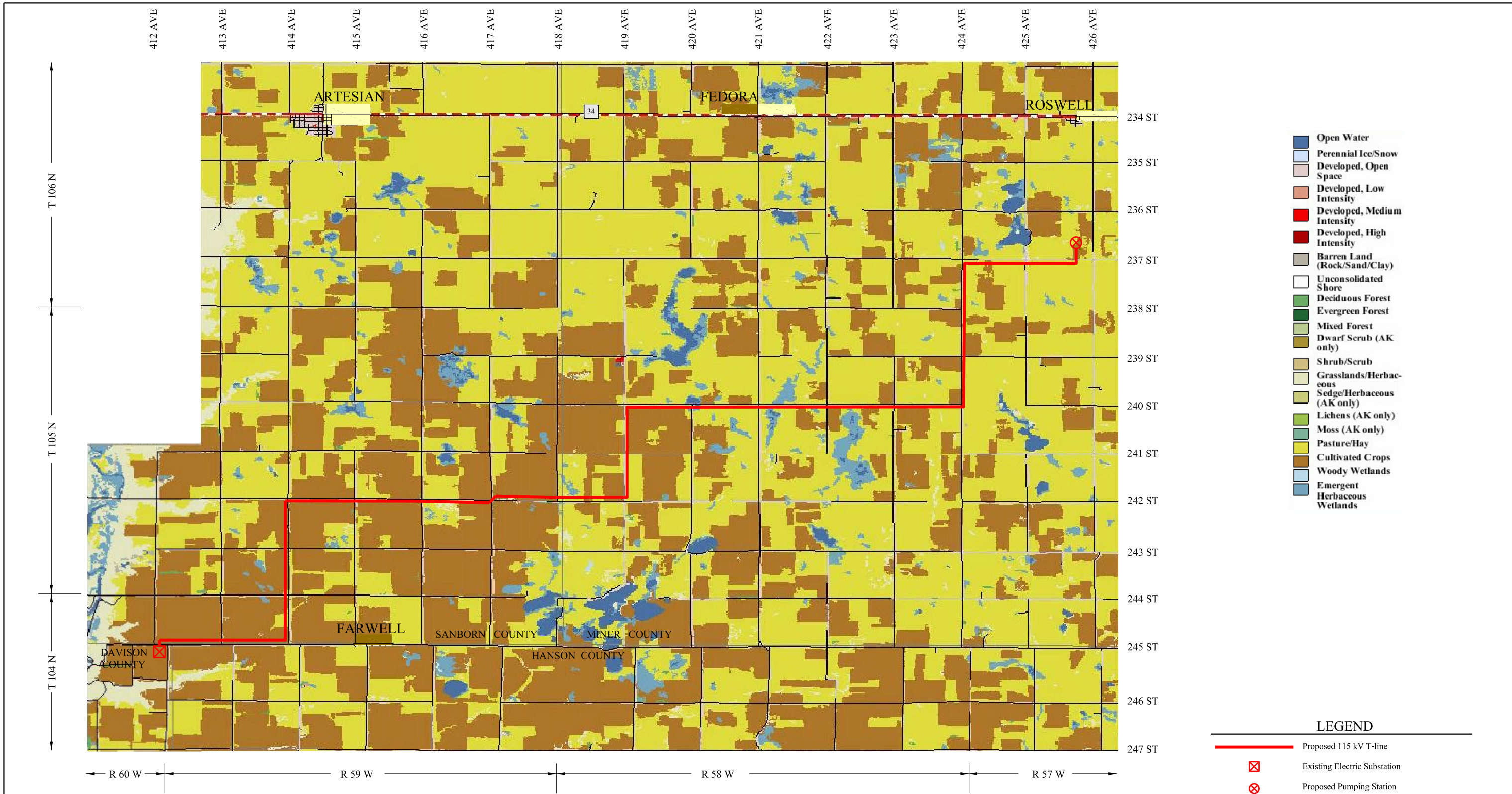
My Commission Expires January 24, 2013.

EAST RIVER ELECTRIC POWER COOPERATIVE ROSWELL LINE TAP



LEGEND

- - - EXISTING EAST RIVER 69KV LINE
- ▬▬▬ PROPOSED EAST RIVER 115KV LINE
- ▲ NEW EAST RIVER ROSWELL SUBSTATION
- ▲ NEW WESTERN AREA POWER ADMINISTRATION 230KV LETCHER SUBSTATION
- ⊕ CEMETARY
- ⊞ HISTORICAL MONUMENT



- Open Water
- Perennial Ice/Snow
- Developed, Open Space
- Developed, Low Intensity
- Developed, Medium Intensity
- Developed, High Intensity
- Barren Land (Rock/Sand/Clay)
- Unconsolidated Shore
- Deciduous Forest
- Evergreen Forest
- Mixed Forest
- Dwarf Scrub (AK only)
- Shrub/Scrub
- Grasslands/Herbaceous
- Sedge/Herbaceous (AK only)
- Lichens (AK only)
- Moss (AK only)
- Pasture/Hay
- Cultivated Crops
- Woody Wetlands
- Emergent Herbaceous Wetlands

LEGEND

- Proposed 115 kV T-line
- ⊠ Existing Electric Station
- ⊗ Proposed Pumping Station

REV	DATE	DESCRIPTION

IGAR DeWild Grant Reckert & Assoc. Co.
Consulting Engineers
Rock Rapids, Iowa

Date: 7-08
Designed By: DJH
Project Manager: DJH
Project Number: 421603

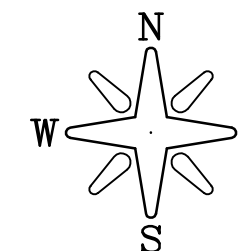
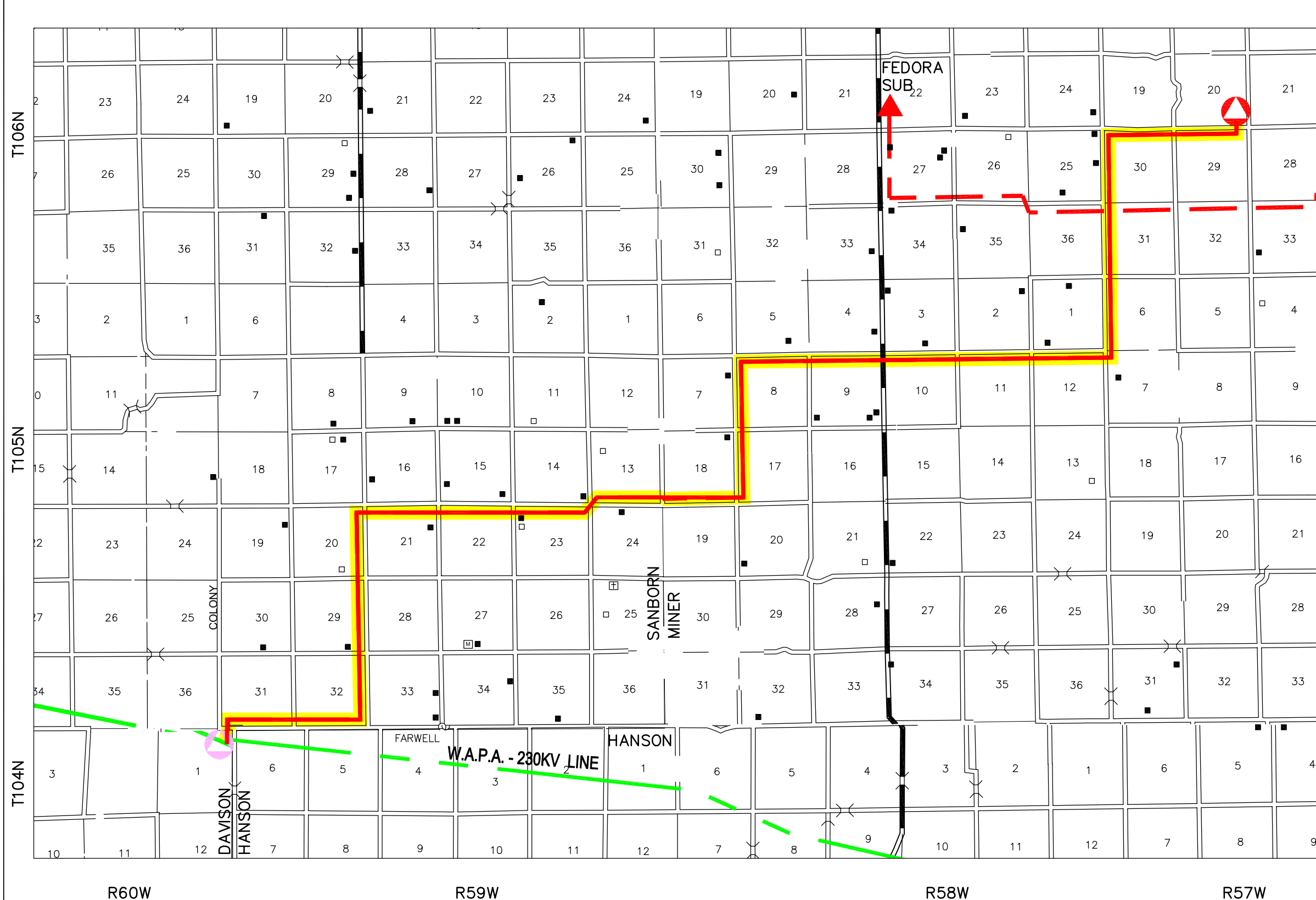
EAST RIVER ELECTRIC POWER COOP
MADISON, SOUTH DAKOTA

LAND USE MAP
KEYSTONE TRANSMISSION LINE-PUMPING STATION #22

DWG NO. EXHIBIT 3

P:\0421603\DWG\EXHIBIT 3.DWG

EAST RIVER ELECTRIC POWER COOPERATIVE ROSWELL LINE TAP



LEGEND

- - - EXISTING EAST RIVER 69KV LINE
- PROPOSED EAST RIVER 115KV LINE
- ▲ NEW EAST RIVER ROSWELL SUBSTATION
- ▲ NEW WESTERN AREA POWER ADMINISTRATION 230KV LETCHER SUBSTATION
- OCCUPIED DWELLING
- UNOCCUPIED DWELLING
- ⊕ CEMETARY
- Ⓜ HISTORICAL MONUMENT