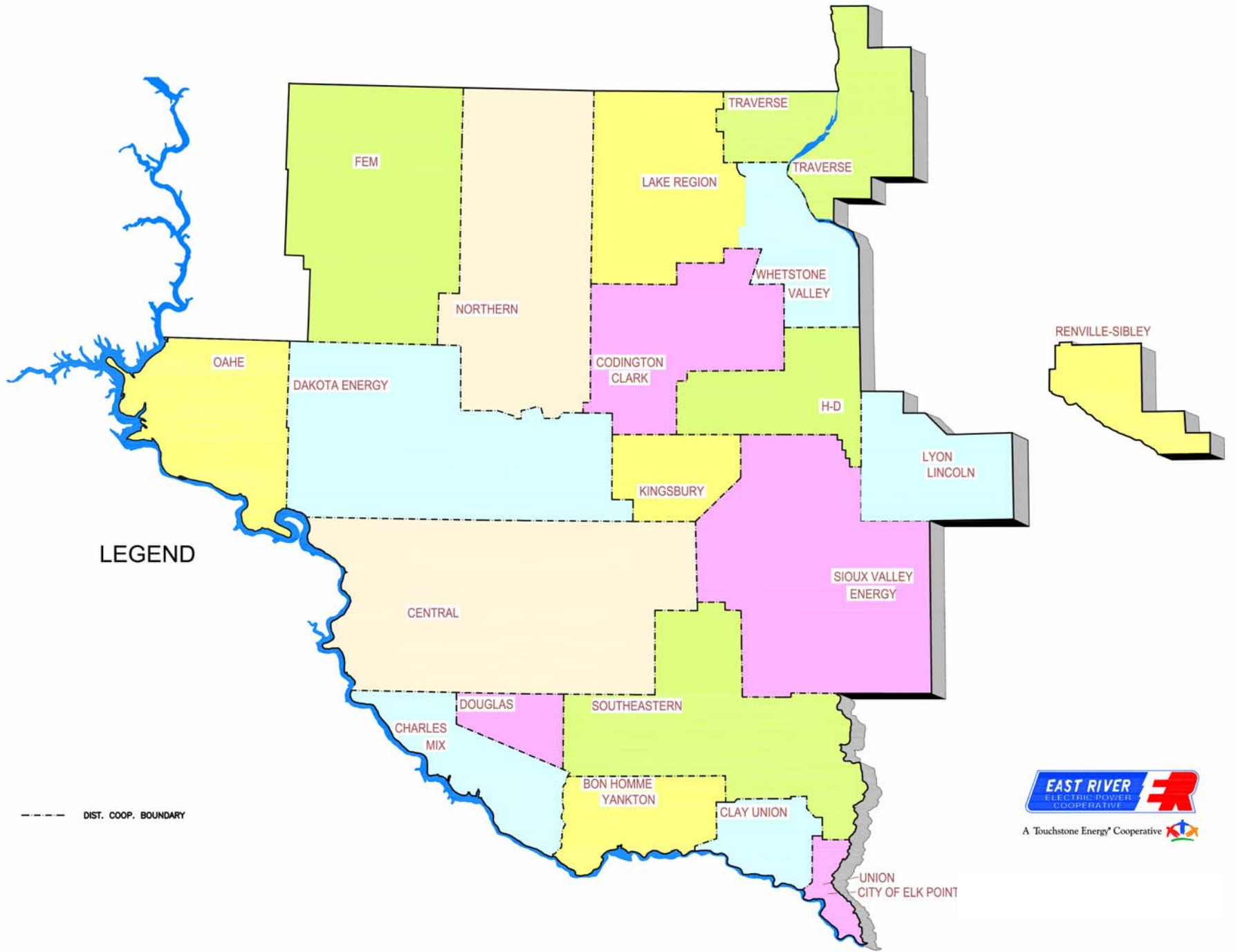


**Public Hearing  
South Dakota Public Utility Commission  
Chancellor, South Dakota**

**August 7, 2008**

**East River Electric Power Cooperative  
Application For Permit To Construct  
Chancellor 115 kV Line Tap**



LEGEND

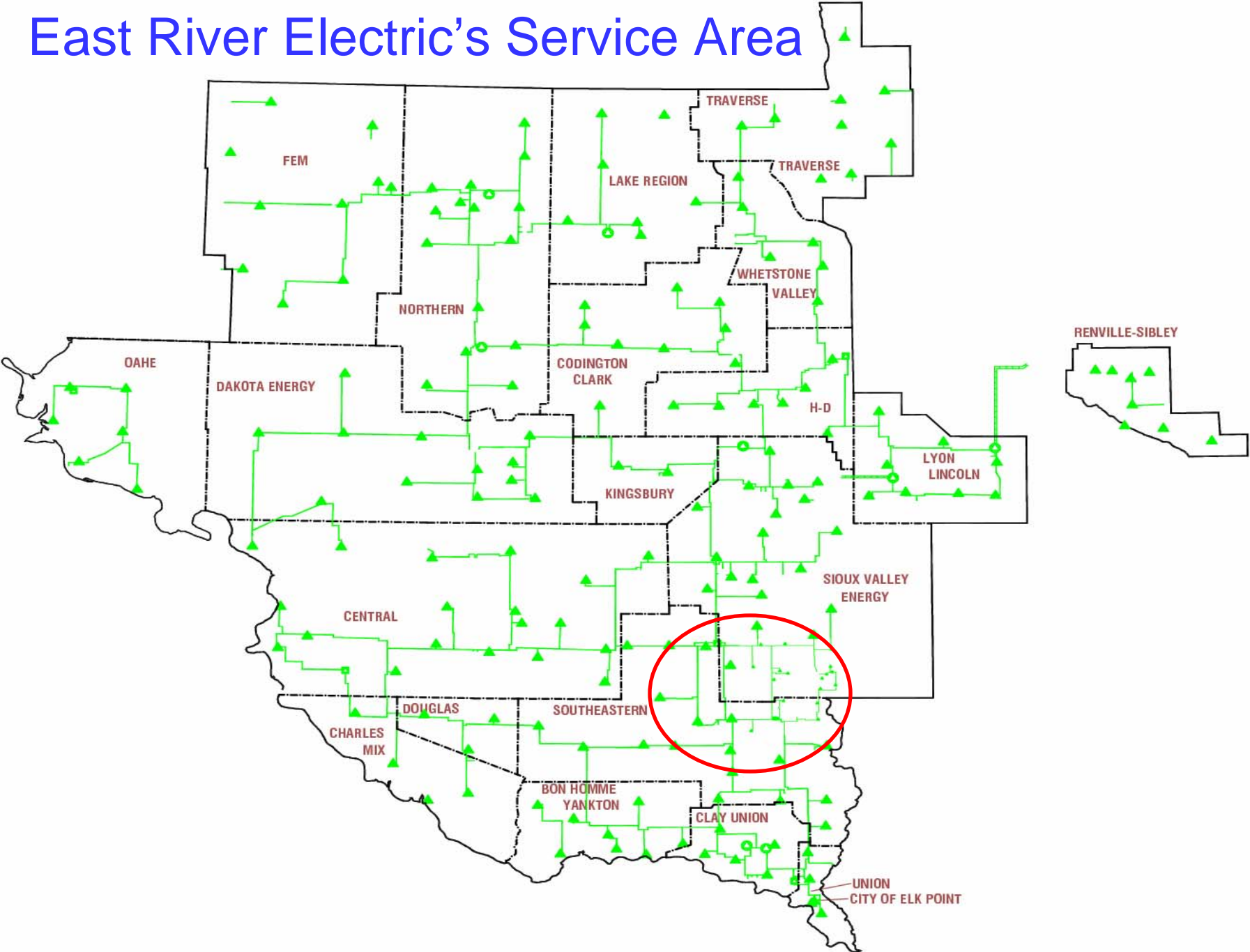
--- DIST. COOP. BOUNDARY



A Touchstone Energy® Cooperative

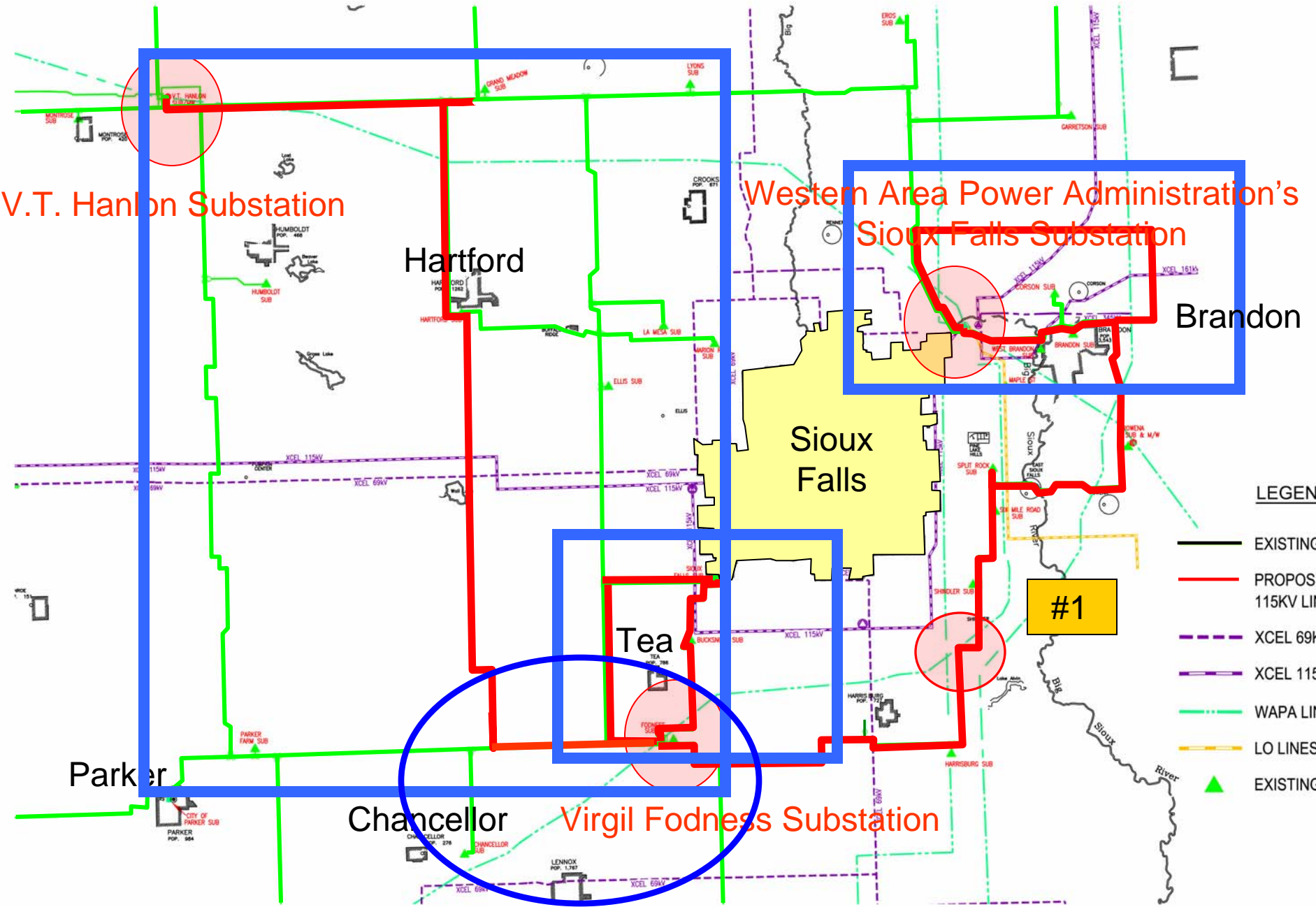


# East River Electric's Service Area



# EAST RIVER ELECTRIC POWER COOPERATIVES CHANCELLOR LINE TAP

## EAST RIVER'S EXISTING ELECTRIC SYSTEM WEST SIDE OF SIOUX FALLS



V.T. Hanlon Substation

Western Area Power Administration's  
Sioux Falls Substation

Brandon

Hartford

Sioux Falls

Tea

#1

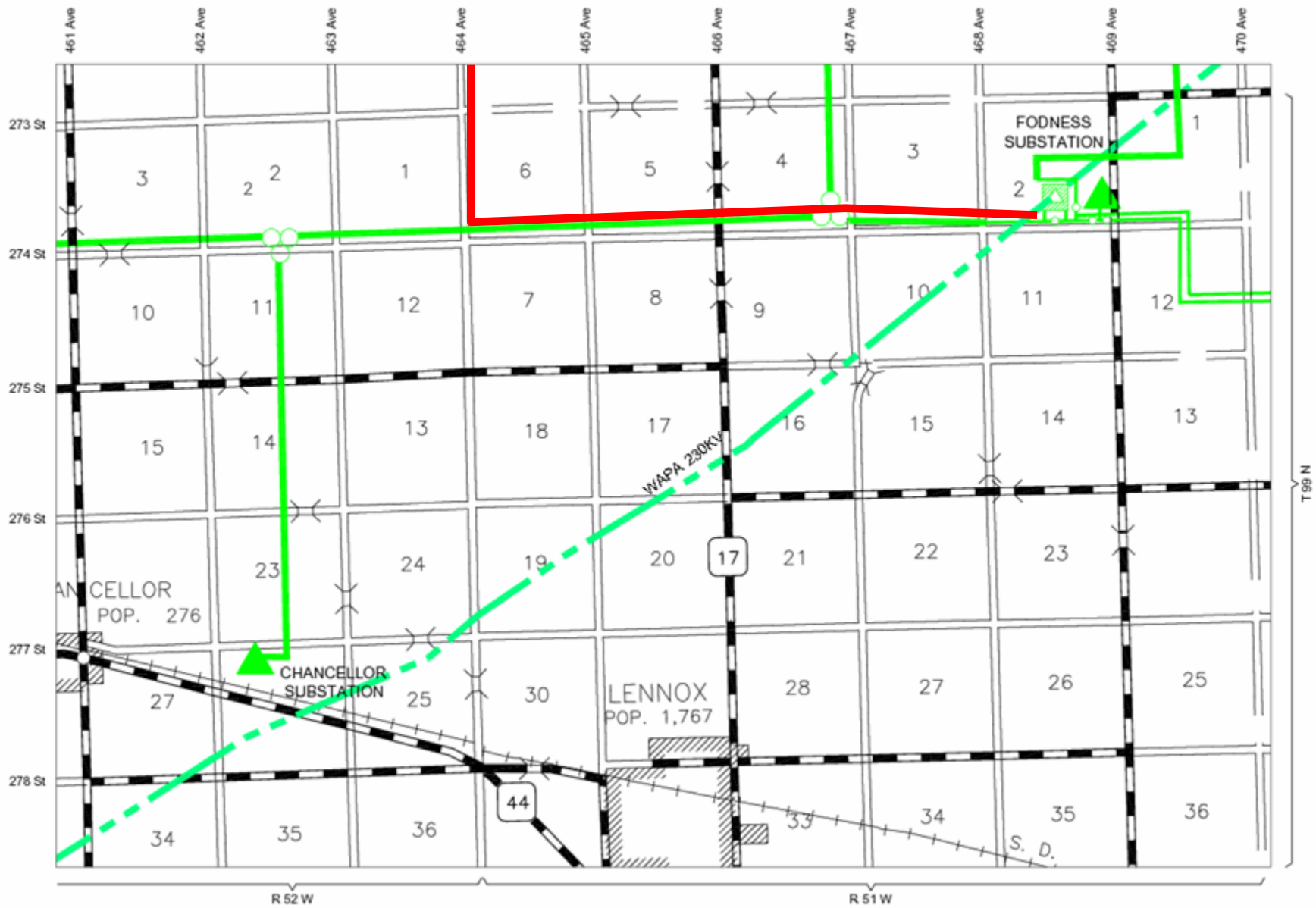
Parker

Chancellor

Virgil Fodness Substation

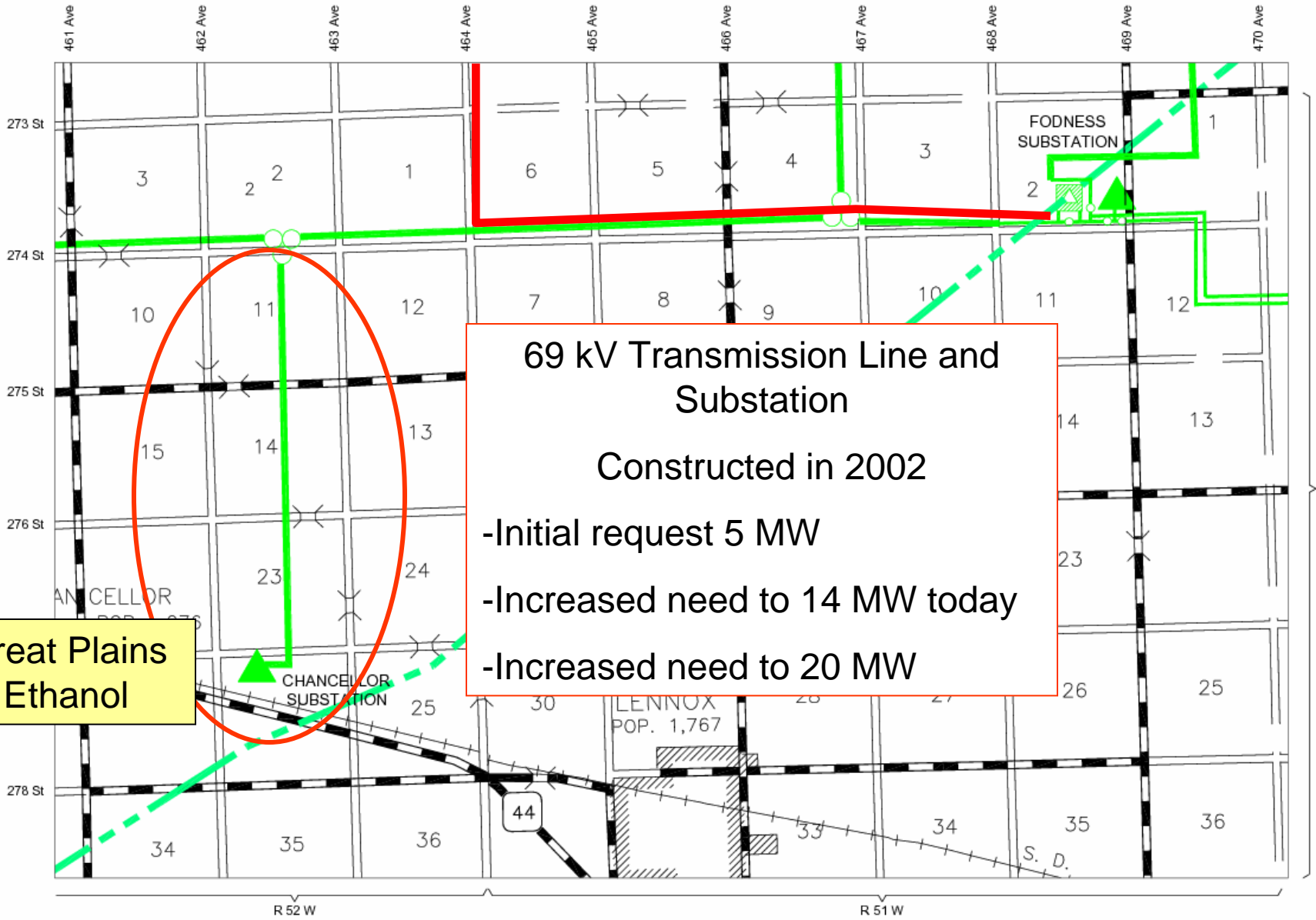
### LEGEND

- EXISTING 69KV LINE
- PROPOSED 115KV LINE
- - - XCEL 69KV
- - - XCEL 115KV
- - - WAPA LINE
- - - LO LINES
- ▲ EXISTING 69KV SUB





**Single Pole Double Circuit 115/69 kV**



**69 kV Transmission Line and Substation**

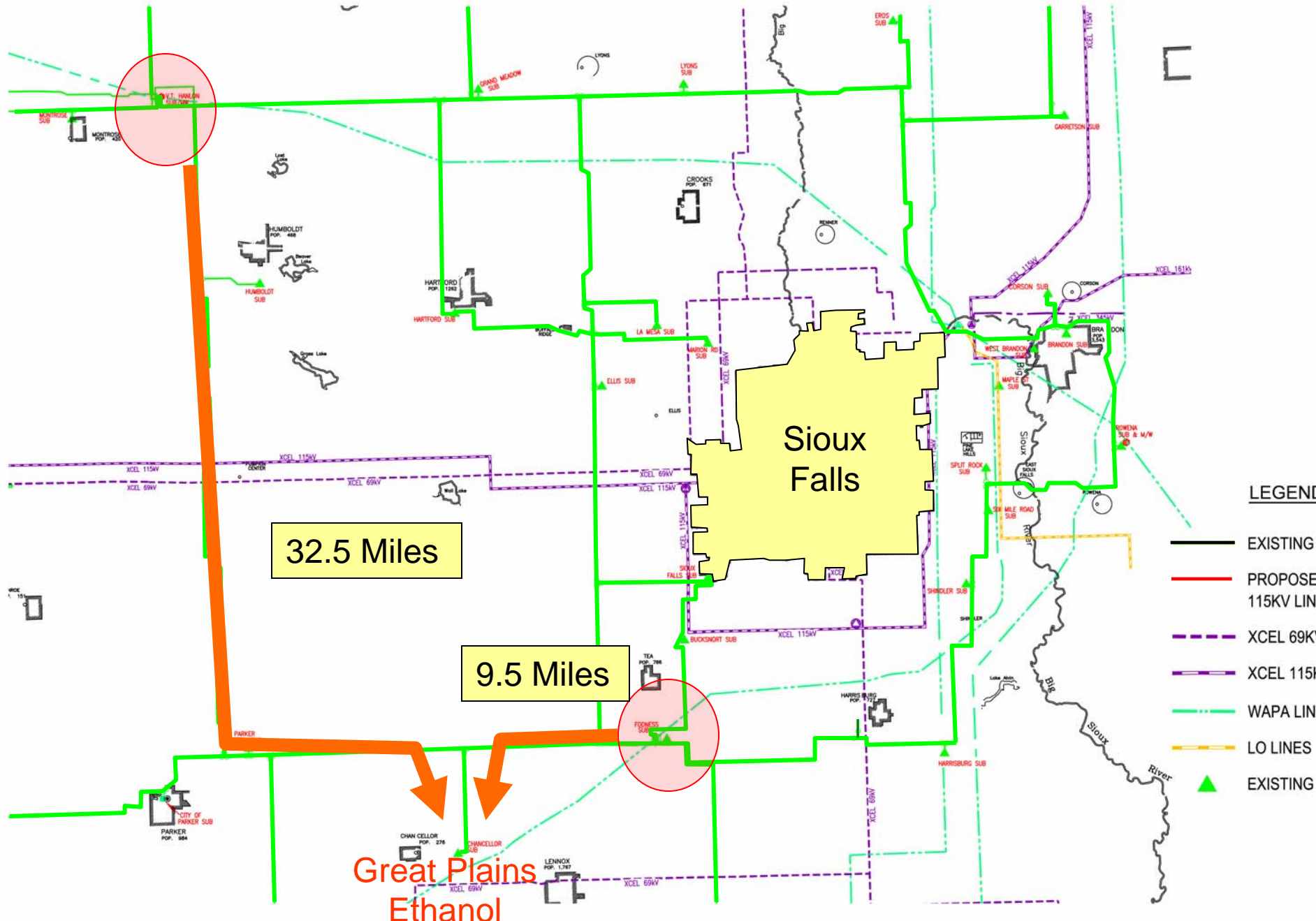
Constructed in 2002

- Initial request 5 MW
- Increased need to 14 MW today
- Increased need to 20 MW

**Great Plains Ethanol**

# EAST RIVER ELECTRIC POWER COOPERATIVES CHANCELLOR LINE TAP

## EAST RIVER'S EXISTING ELECTRIC SYSTEM WEST SIDE OF SIOUX FALLS



### LEGEND

- EXISTING 69KV LINE
- PROPOSED 115KV LINE
- - - XCEL 69KV
- - - XCEL 115KV
- - - WAPA LINE
- - - LO LINES
- ▲ EXISTING SUBSTATION



# Chancellor 115 kV Transmission Line

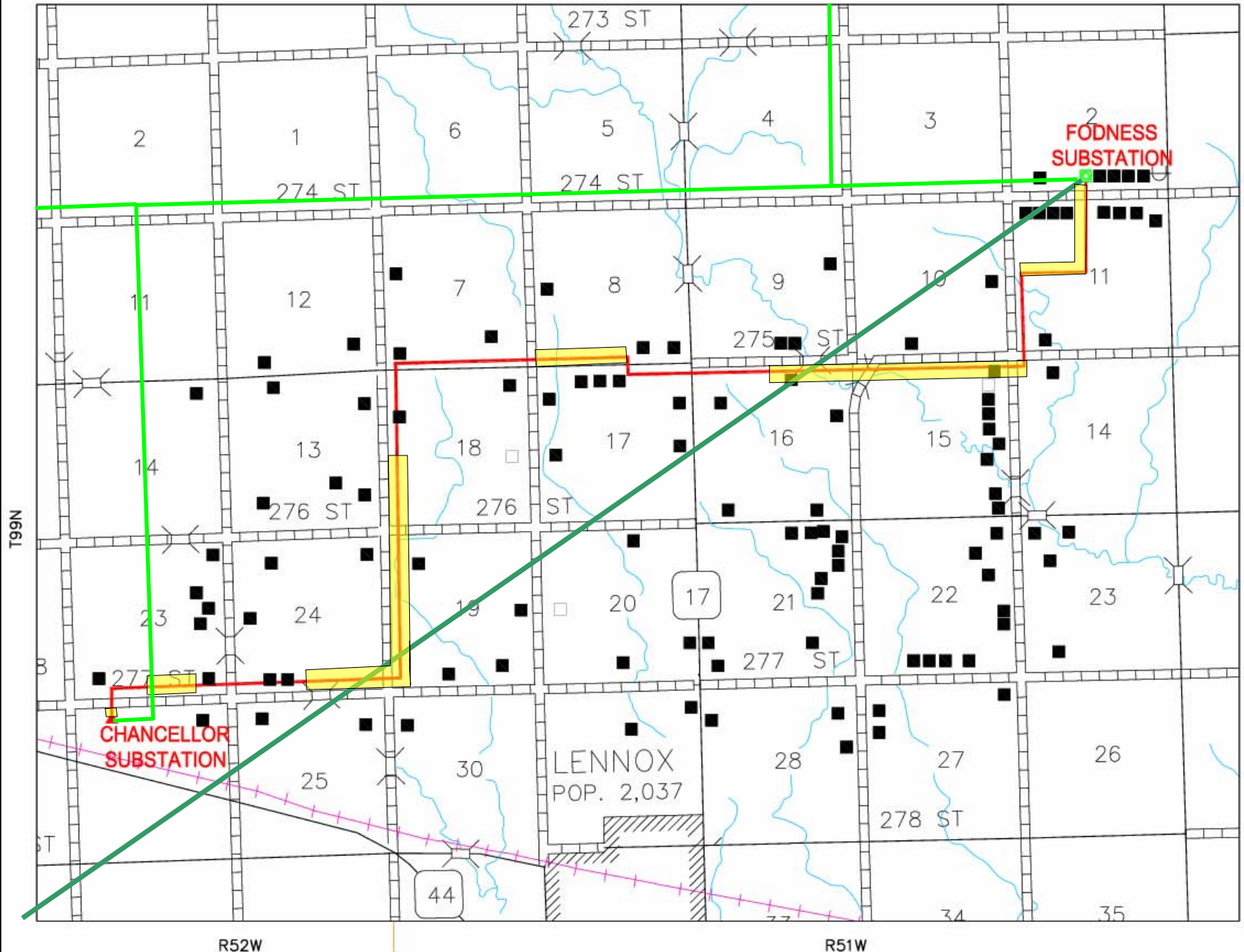


T 99 N

R 52 W

R 51 W

EAST RIVER ELECTRIC POWER COOPERATIVES CHANCELLOR LINE TAP  
RESIDENCES WITHIN ONE HALF MILE OF PROJECT



# Transmission Structures



**115 Kv Line Structure with 115 Kv Post Insulators**



# EASEMENTS

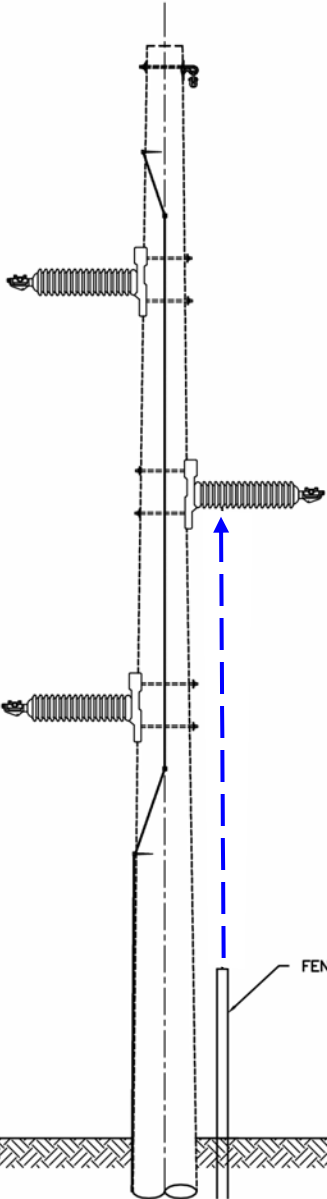


**Line on Private Land**



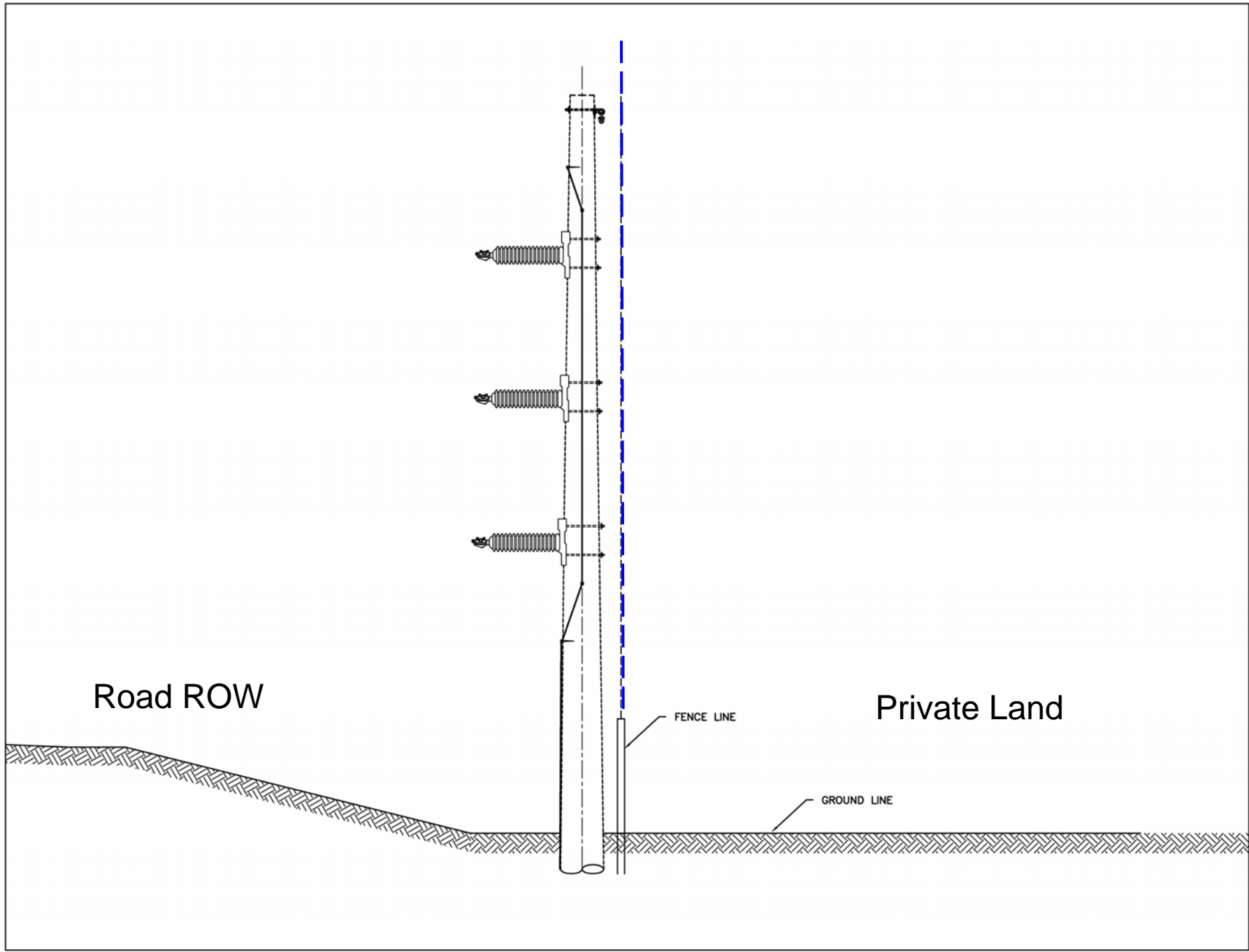
Road ROW

Private Land



FENCE LINE

GROUND LINE



Road ROW

Private Land

FENCE LINE

GROUND LINE

# Approvals Required

- Six governmental agencies will have reviewed and approved before commencement of construction
  - U.S. Fish and Wildlife
  - U.S. Army Corp of Engineers
  - South Dakota Department of Natural Resources
  - South Dakota Department of Game Fish and Parks
  - South Dakota State Historical Society
  - South Dakota Public Utility Commission

County franchise obtained for both  
Lincoln and Turner Counties

# Time frame for construction

Begin - Late 2008

Complete – Early 2009

# Contact Information

Dan Wall

Manager Transmission/Engineering Services

Ron Golden

Land Management Supervisor

Jim Edwards

Assistant General Manager Operations

East River Electric Power Cooperative

605-256-4536

