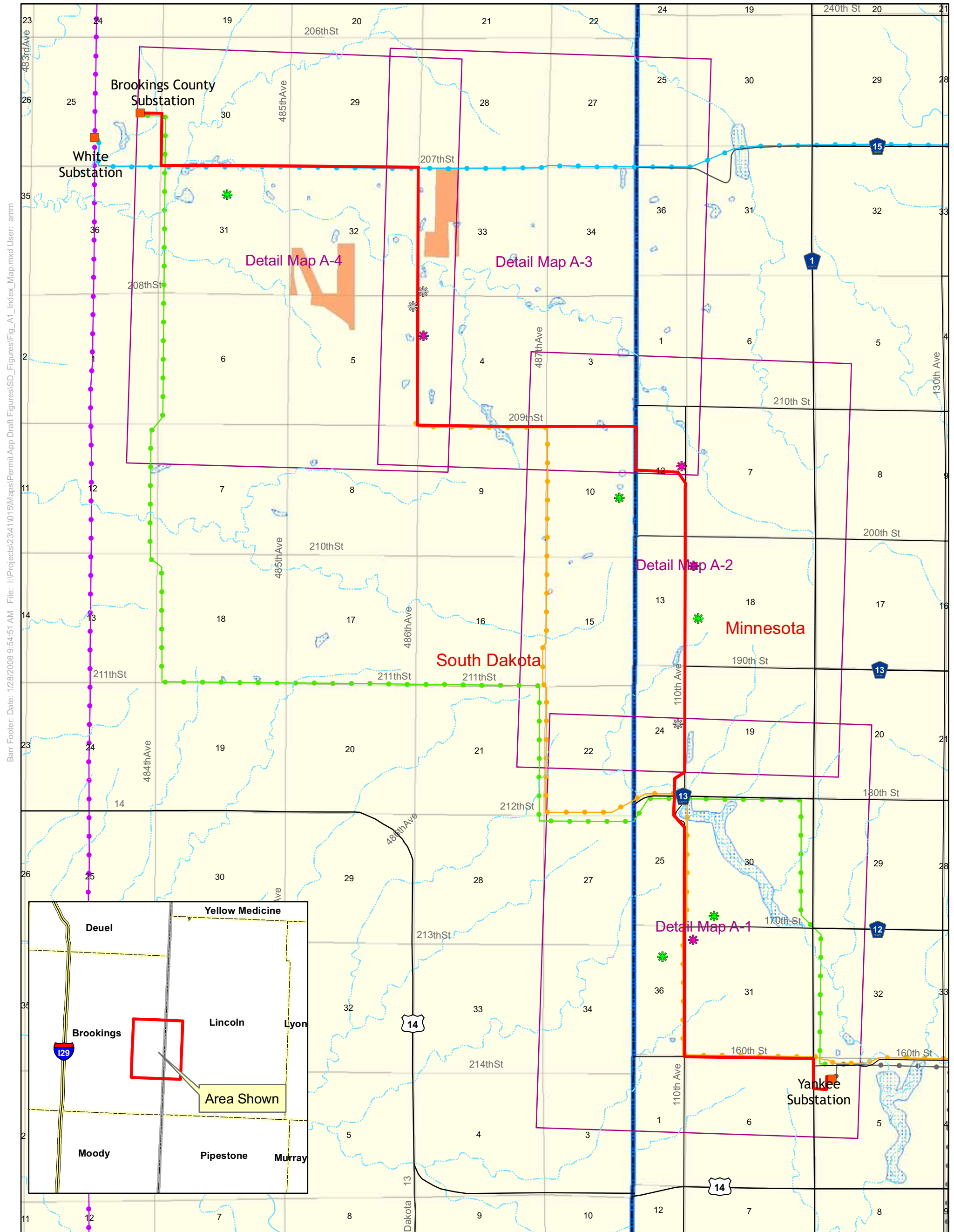


## Exhibit A: Detailed Route Maps

---

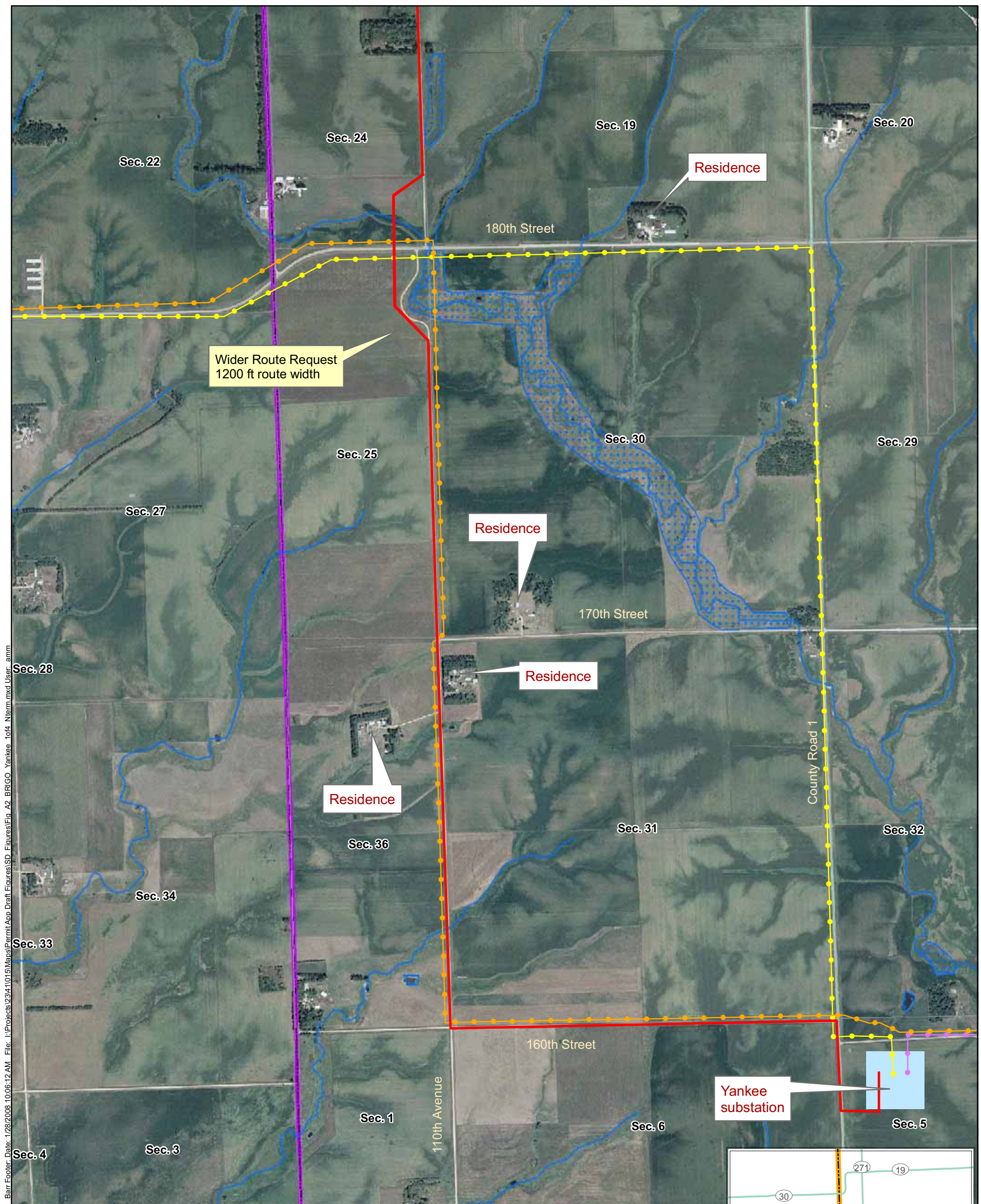


|                                  |                     |                                      |
|----------------------------------|---------------------|--------------------------------------|
| Brookings-Yankee 115-kV #1       | Detail Map Guide    | <b>Nearby Residential Properties</b> |
| Yankee-Buffalo Ridge 115-kV Line | Wetlands            | Residential w/in 300'                |
| PPM feeder line                  | MN-SD State Line    | Residential w/in 1500'               |
| East River 115 kV                | SDGFP Walk-in Areas | Abandoned                            |
| Western 345 kV                   |                     |                                      |
| Proposed Route                   |                     |                                      |

**Figure A-1 Index Map**  
 BRIGO Yankee-Brookings County  
 Transmission Line  
  
 Xcel Energy  
 Route Permit Application  
 January 2008

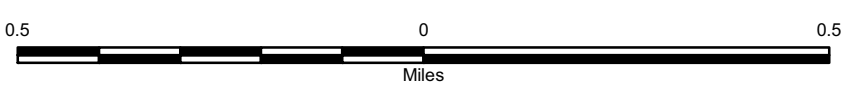
N  
  
  
 Miles

Barr Footer: Date: 1/28/2008 9:54:51 AM File: I:\Projects\2341\015\Maps\Permit\Draft Figures\SD\_Figures\Fig\_A1\_Index\_Map.mxd User: ammm



Barr Footer: Date: 1/28/2008 10:06:12 AM File: I:\Projects\23411015\Maps\Permit\App Draft\Figures\SD\_Figures\Fig\_A2\_BRIGO\_Yankee\_1044\_Nterm.mxd User: ammm

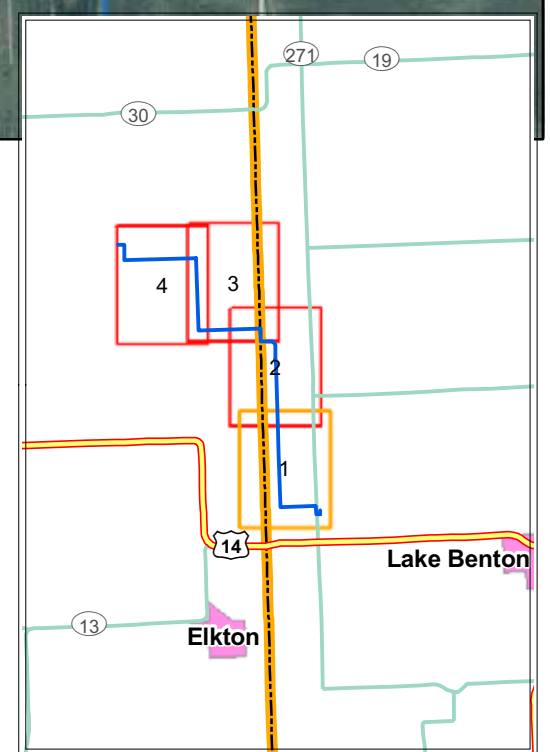
- Proposed Route Centerline
- PPM feeder line
- Brookings-Yankee 115 kV #1
- Yankee-Buffalo Ridge 115 kV
- Rivers & Streams
- Wetlands
- State Line

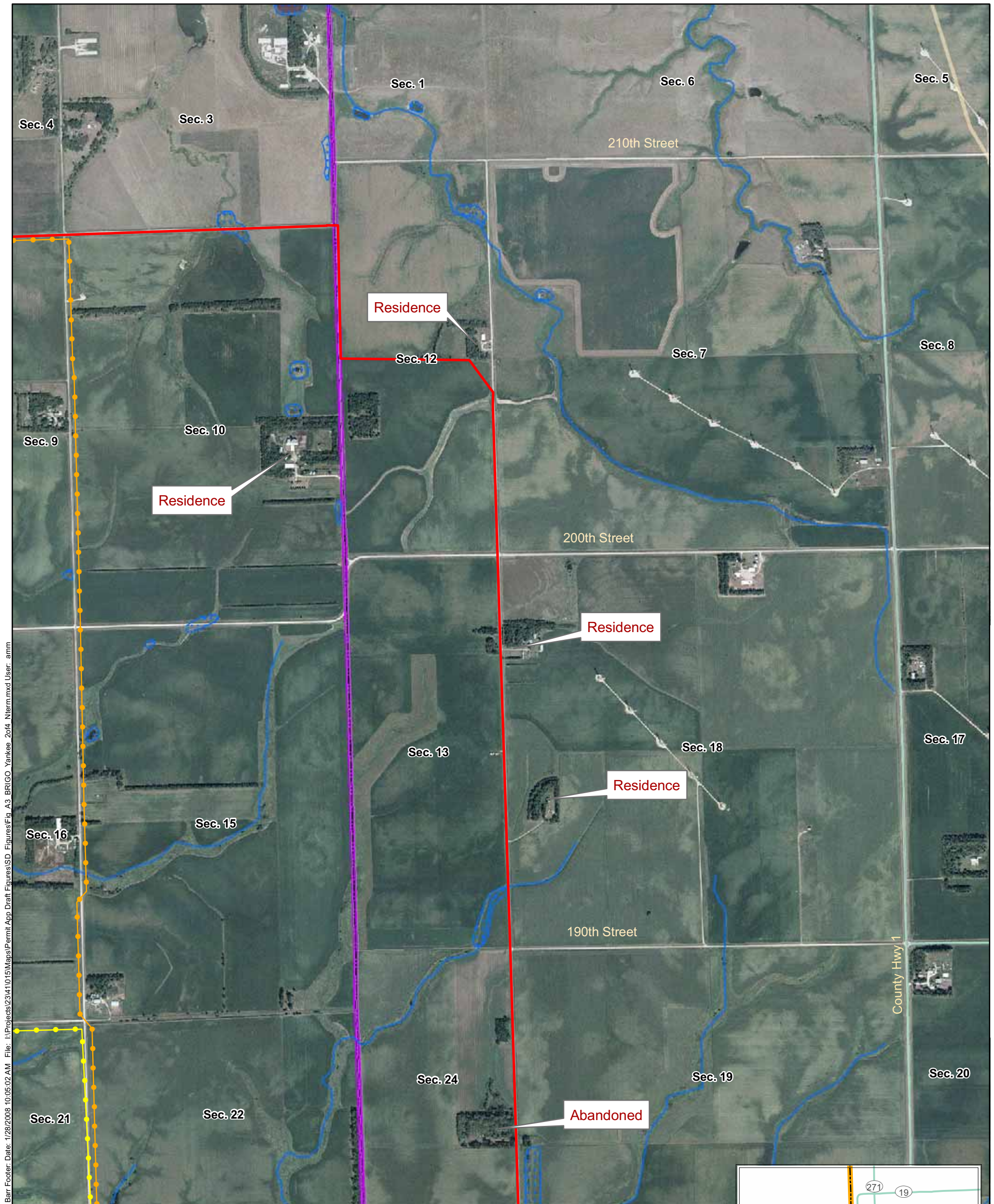


**Figure A-2 - Detailed Route Map**  
**Map 1 of 4**  
 BRIGO Yankee-Brookings County  
 Transmission Line

Xcel Energy  
 Route Permit Application  
 January 2008

Yankee substation





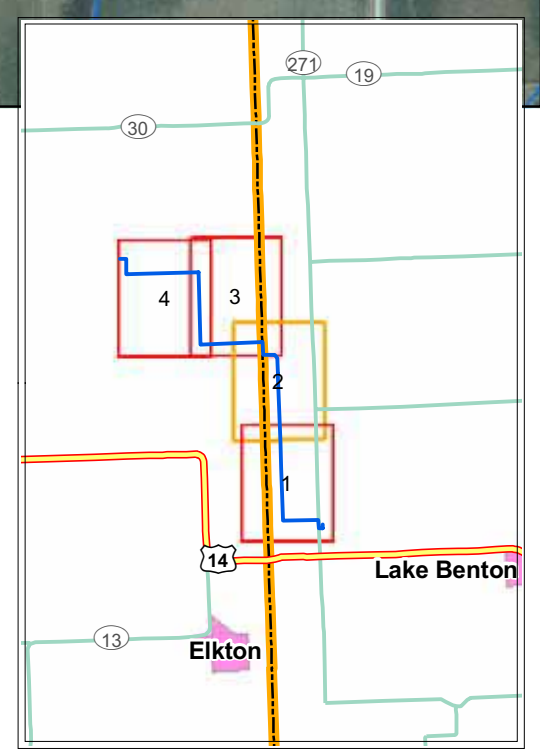
Barr Footer: Date: 1/28/2008 10:05:02 AM File: I:\Projects\23141\015\Maps\Permit App Draft Figures\SD\_Figures\Fig\_A3\_BRIGO\_Yankee\_2014\_NIerm.mxd User: amm

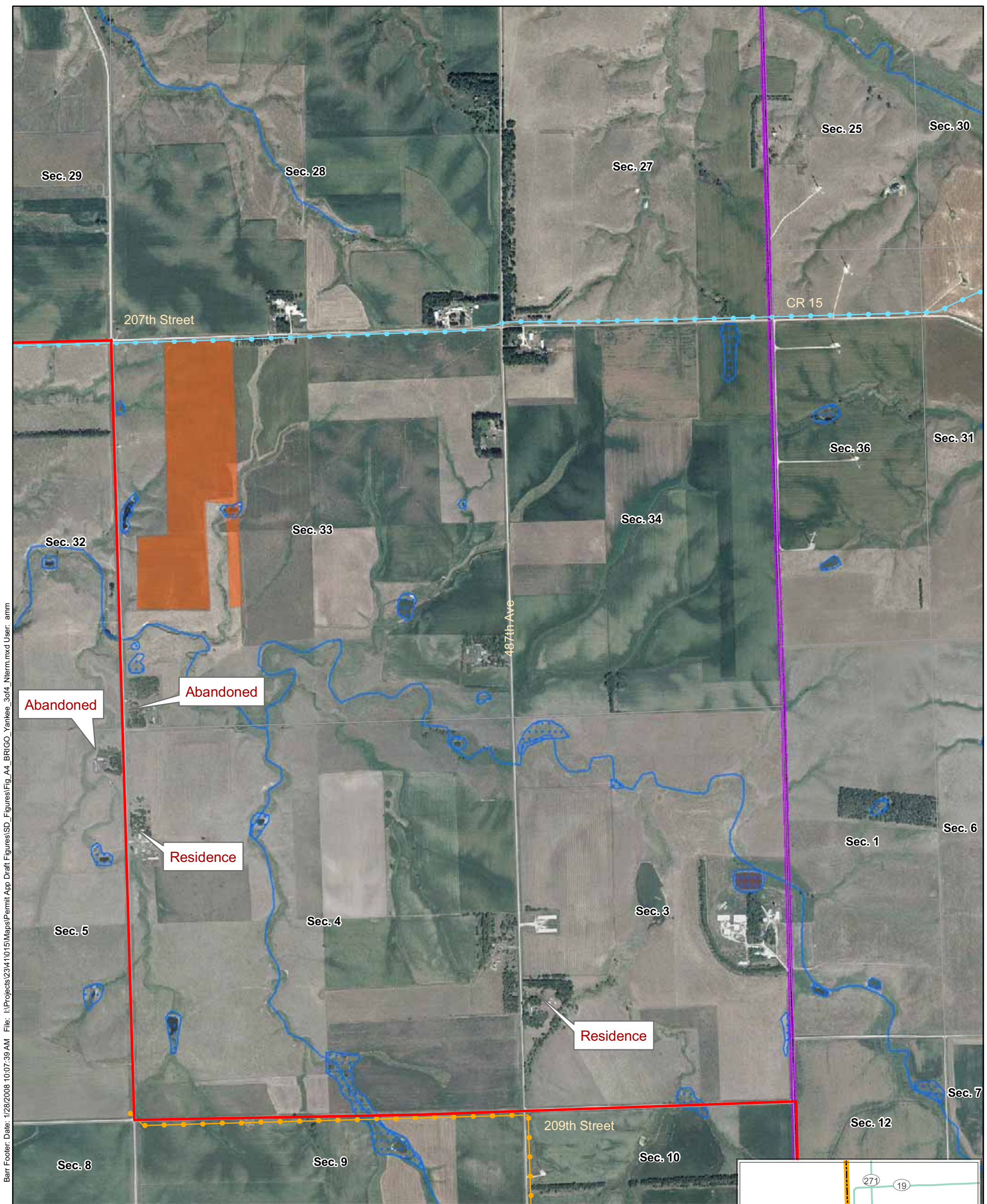
- Proposed Route Centerline
- PPM feeder line
- Brookings-Yankee 115 kV #1
- Yankee-Buffalo Ridge 115 kV
- Rivers & Streams
- Wetlands
- State Line



**Figure A-3. - Detailed Route Map**  
**Map 2 of 4**  
 BRIGO Yankee-Brookings County  
 Transmission Line

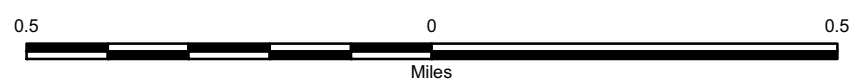
Xcel Energy  
 Route Permit Application  
 January 2008



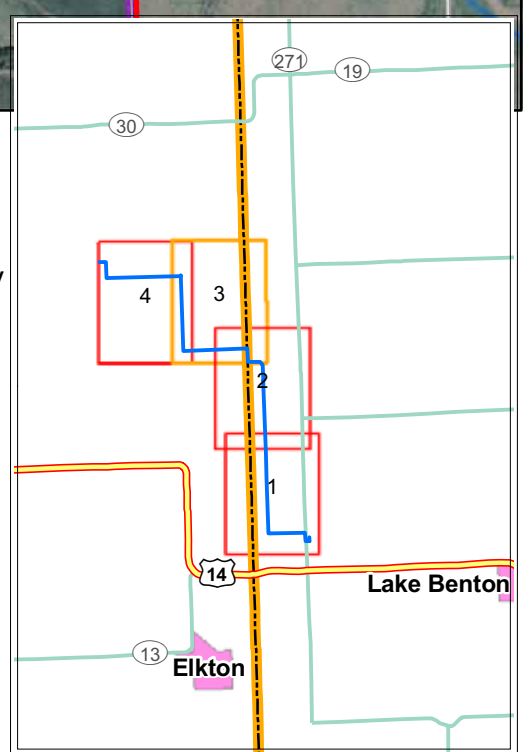


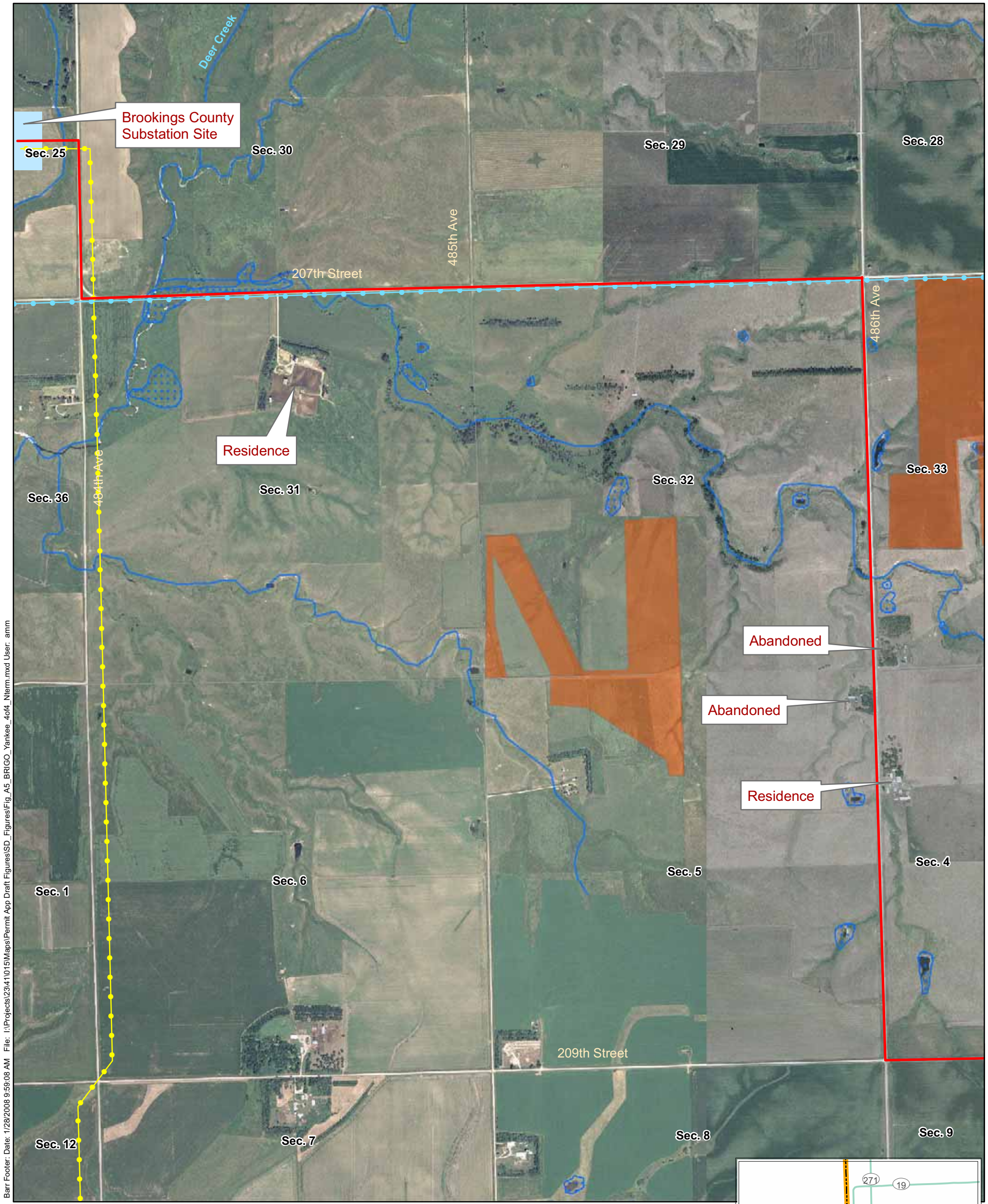
Barr Footer, Date: 1/28/2008 10:07:39 AM File: I:\Projects\2341015\Maps\Permit App Draft\Figures\SD\_Figures\Fig\_A4\_BRIGO\_Yankee\_3of4\_Nierm.mxd User: anm

- Proposed Route Centerline
- Existing East River 115 kV
- PPM feeder line
- Rivers & Streams
- Wetlands
- SD Walk-in Areas
- State Line



**Figure A-4. Detailed Route Map**  
**Map 3 of 4**  
 BRIGO Yankee-Brookings County  
 Transmission Line  
 Xcel Energy  
 Route Permit Application  
 January 2008





Barr Footer: Date: 1/28/2008 9:59:08 AM File: I:\Projects\2341015\Map\Permit App Draft\Figures\SD\_Figures\Fig\_A5\_BRIGCO\_Yankee\_4of4\_Nterm.mxd User: ammm

- Proposed Route Centerline
- Streams
- Existing East River 115 kV
- SD Walk-in Areas
- Existing Yankee-Brookings 115 kV #1
- Wetlands



**Figure A-5 - Detailed Route Map**  
**Map 4 of 4**

Yankee-Brookings County  
 115 kV Transmission Line

Xcel Energy  
 Route Permit Application  
 January 2008

