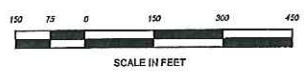
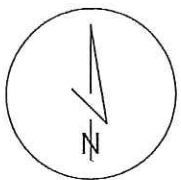


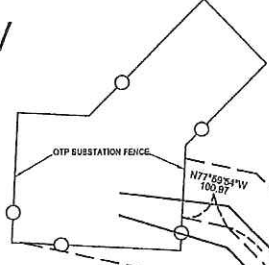
2015 BIG STONE - DUAL 230KV LINE EASEMENT

OTERRAIL
 FIELD WORK: 10/5
 DATE: 7-6-15
 CAD: 10/5-1145
 DATE: 7-6-15
 COORDINATE SYSTEM: LAC QUI PARLE COUNTY 2011
 GRID SCALE: 1,000,000.000
 VERTICAL DATUM: NAD 83
 GNS METHOD: GIBD 13A.MN
 FILE PATH: \\grr\proj\10\Energy\Professional\Borne_15\10_5
 2015 BIG STONE 230-345 TRANSMISSION & STATION

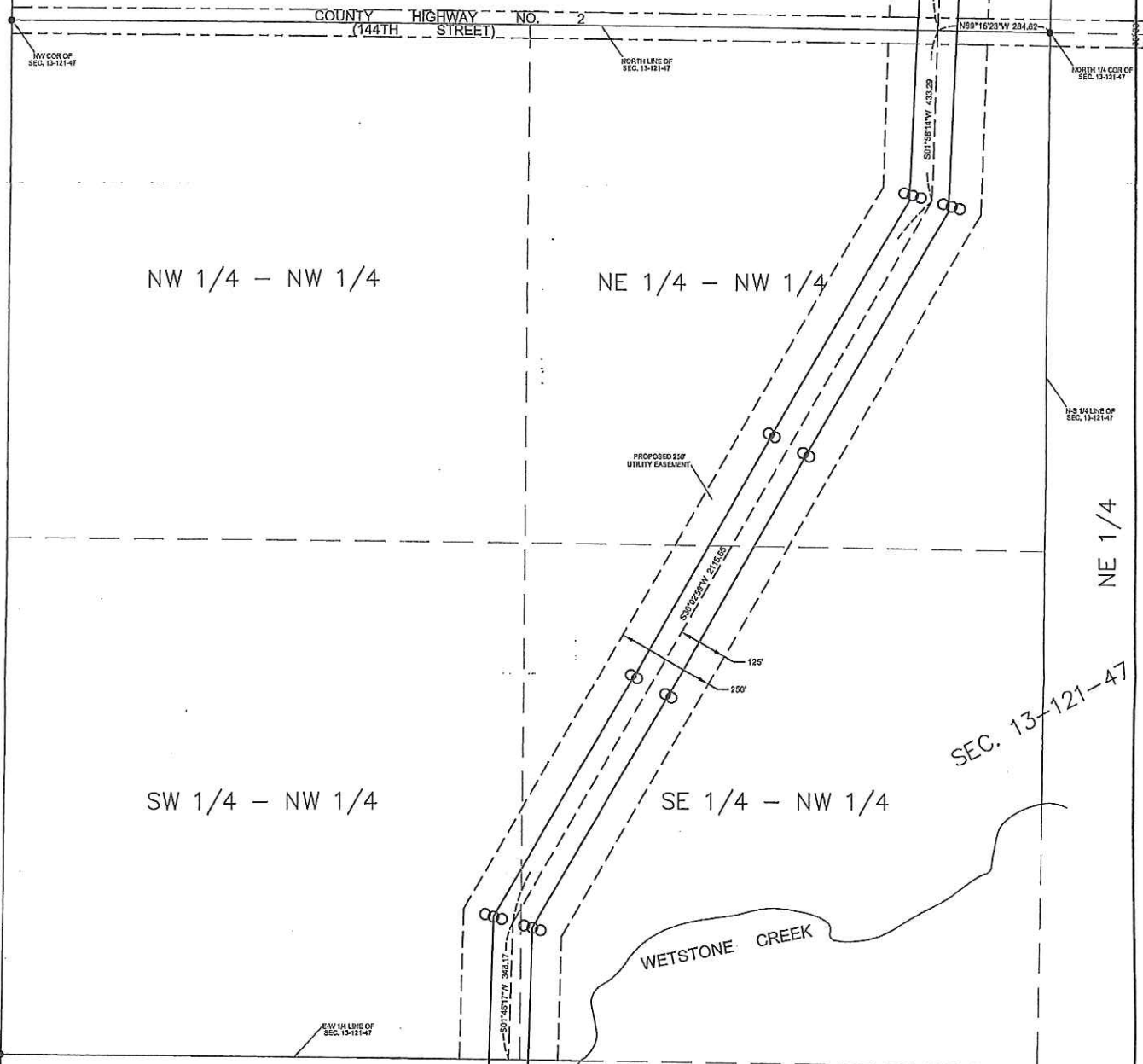


SCALE: 1 INCH = 150 FEET
 BEARINGS ARE BASED ON LAC QUI PARLE COUNTY COORDINATES 2011
 ADJUSTMENT AS DETERMINED BY THE MNDOT CORVRS NETWORK

- LEGEND**
- DENOTES IRON MONUMENT FOUND
 - DENOTES PROPOSED OVERHEAD
 - DENOTES PROPOSED POWER POLE
 - DENOTES PARCEL BOUNDARY



SEC. 12-121-47
 SW 1/4



NW 1/4 - NW 1/4

NE 1/4 - NW 1/4

SW 1/4 - NW 1/4

SE 1/4 - NW 1/4

WETSTONE CREEK

NE 1/4

SEC. 13-121-47