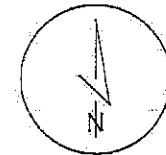


# 2015 BIG STONE - DUAL 230KV LINE COUNTY CROSSING PERMIT

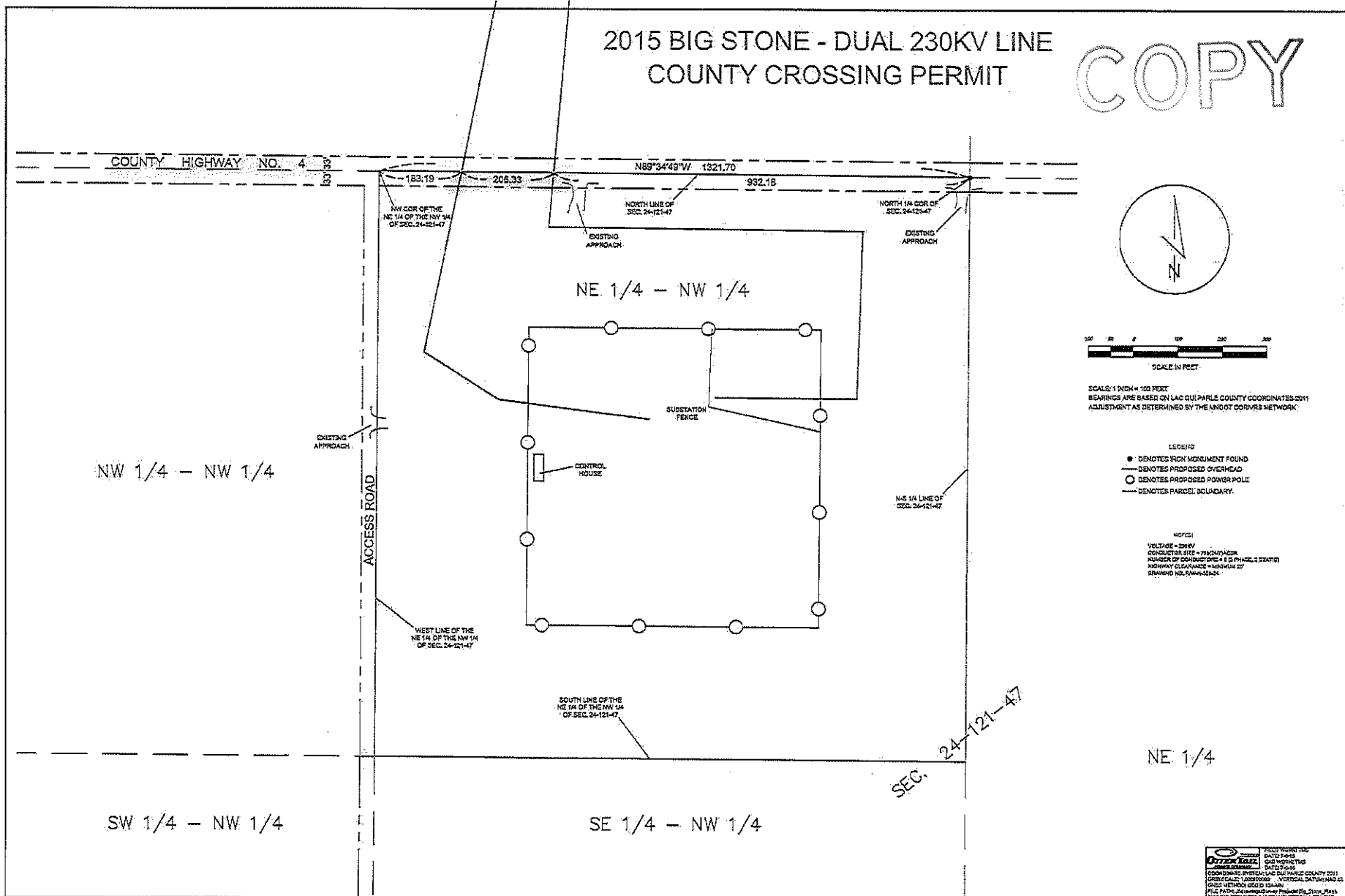
# COPY



SCALE: 1" = 100 FEET  
BEARINGS ARE BASED ON LAC QUI PARLE COUNTY COORDINATES 2011  
ADJUSTMENT AS DETERMINED BY THE LAND DOT COORDINATE NETWORK

- LEGEND
- DENOTES IRON MONUMENT FOUND
  - DENOTES PROPOSED OVERHEAD
  - DENOTES PROPOSED POWER POLE
  - DENOTES PARCEL BOUNDARY

NOTICE  
VOLTAGE = 230KV  
CONDUCTOR SIZE = 795/24/1/2/2/2  
NUMBER OF CONDUCTORS = 4 IN PHASE 2 SPACED  
HIGHWAY CLEARANCE = MINIMUM 27'  
SPACING HS. 1000V-5000V



FILED HEREIN FOR  
DATE 7/26/15  
COUNTY CLERK  
LAC QUI PARLE COUNTY  
COORDINATE SYSTEM LAC QUI PARLE COUNTY 2011  
PROJ: NAD 83 / UTM ZONE 18N  
VERTICAL DATUM: NAVD 83  
FILE PATH: \\s:\projects\2015\20150726\20150726\_150726.dwg  
DRAWN BY: J. J. JENSEN