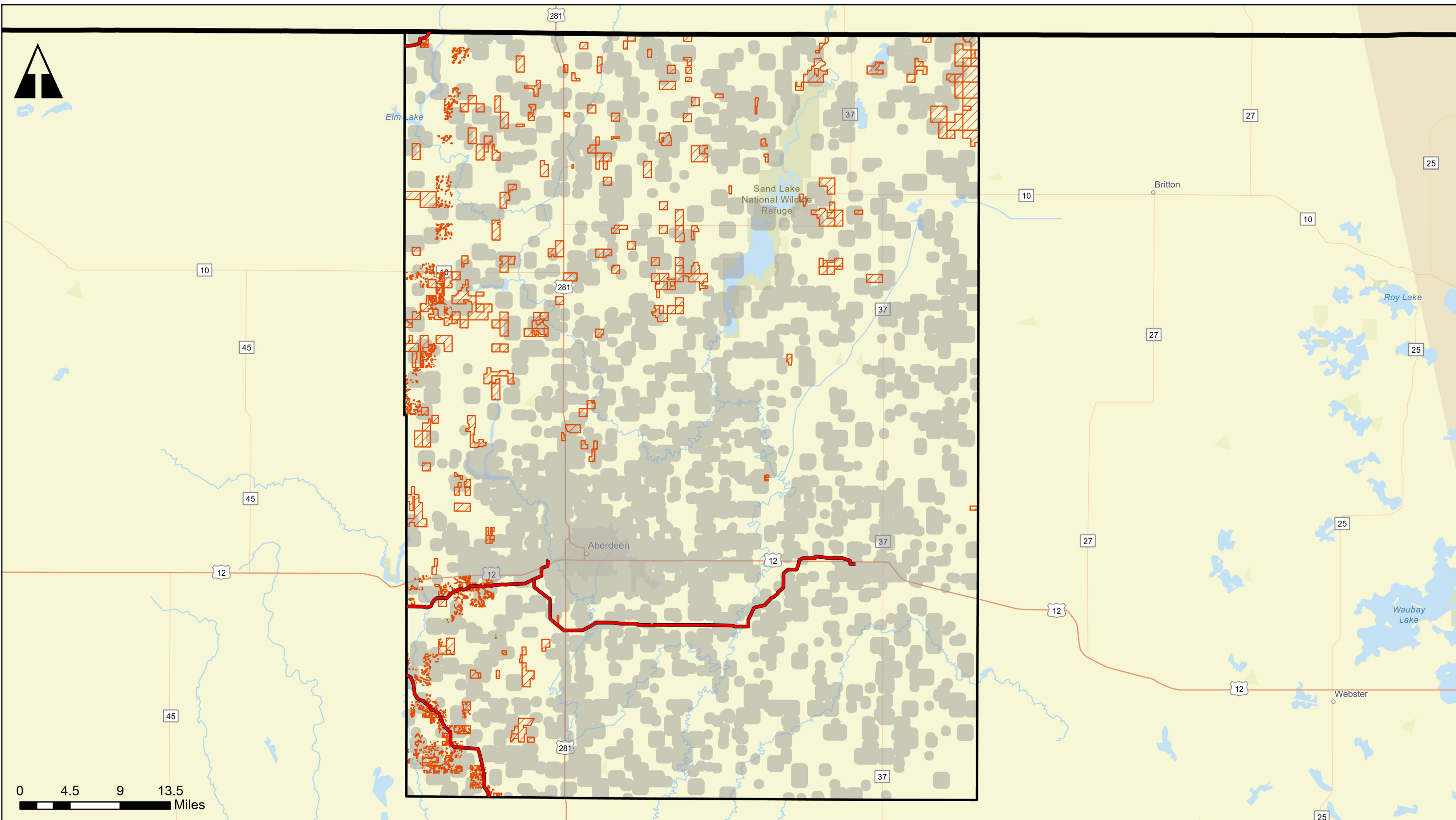


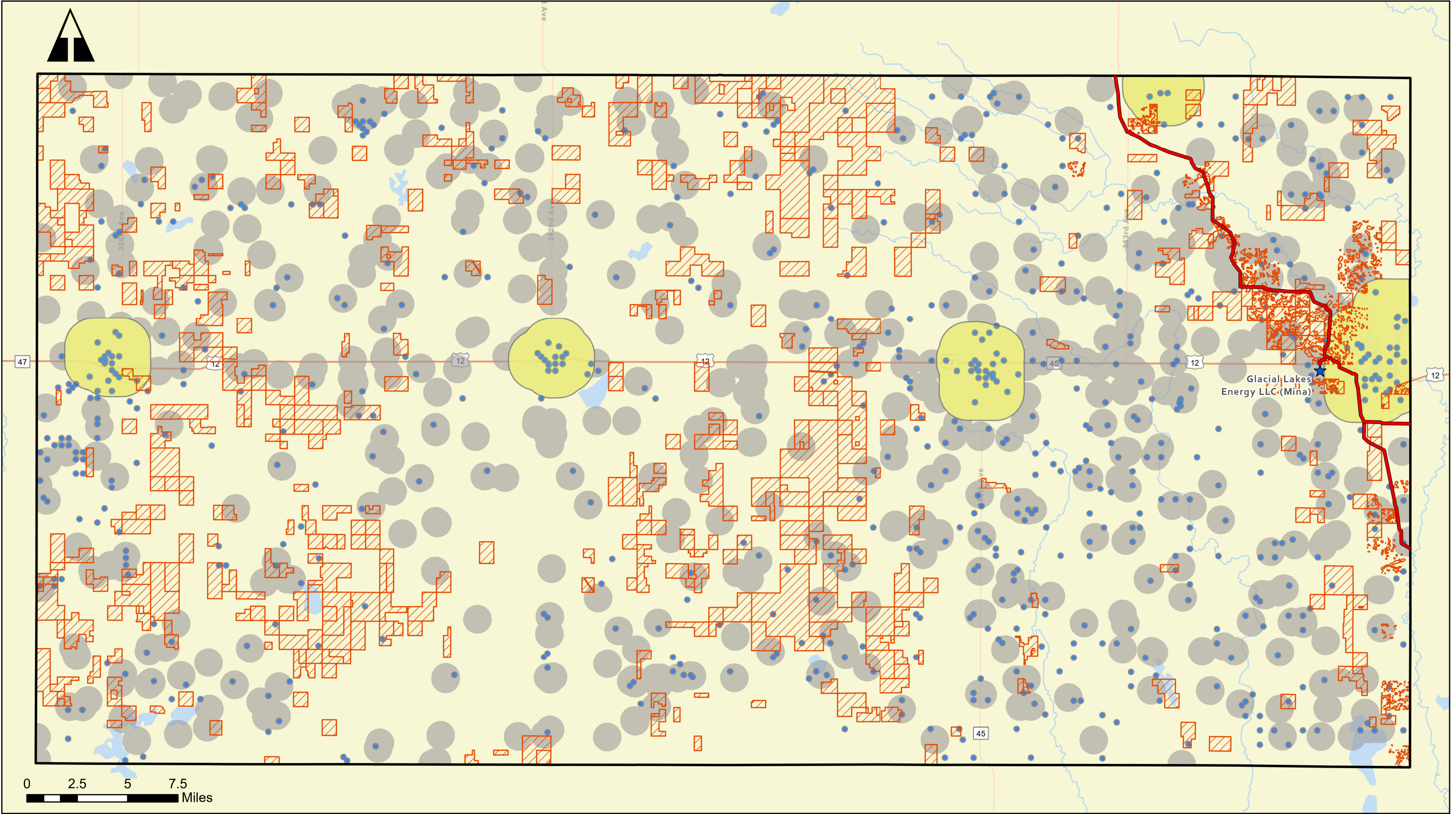
## Appendix 25 – COUNTY SETBACKS



# BROWN COUNTY, SOUTH DAKOTA SETBACK ORDINANCE

- MCE Pipeline Route
- State Boundary
- County Boundary
- Setback 1500 ft. (Property Boundary)
- Grassland Easements



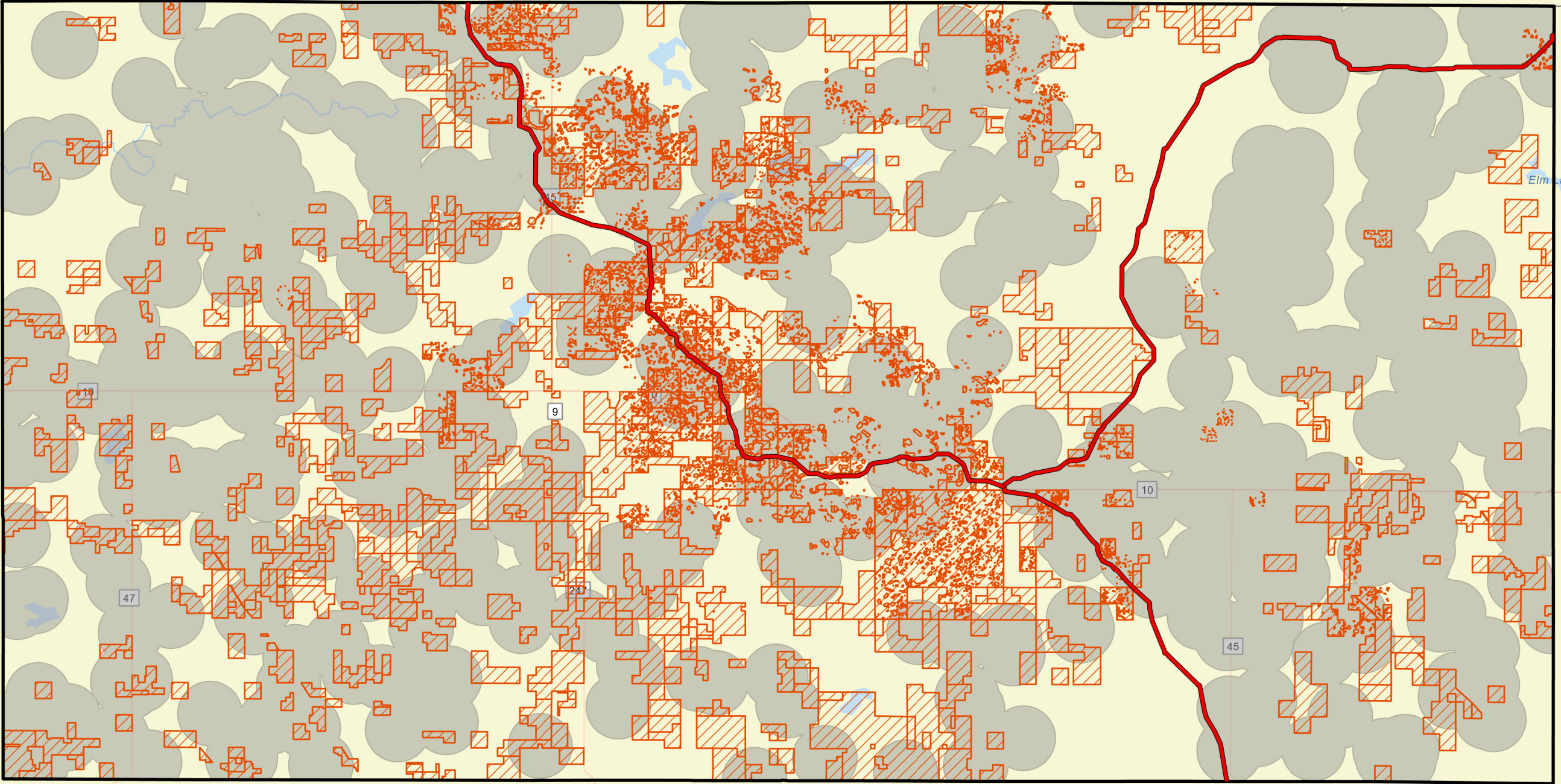


# EDMUNDS COUNTY, SOUTH DAKOTA

## SETBACK ORDINANCE

- ★ Glacial Lakes Energy LLC (Mina)
  - MCE Pipeline Route
  - ▭ County Boundary
  - ▨ Grassland Easements
  - Setback 2640' (Structure)
  - High Consequence Area (1mi)
  - Water Wells (500')
- Page 3





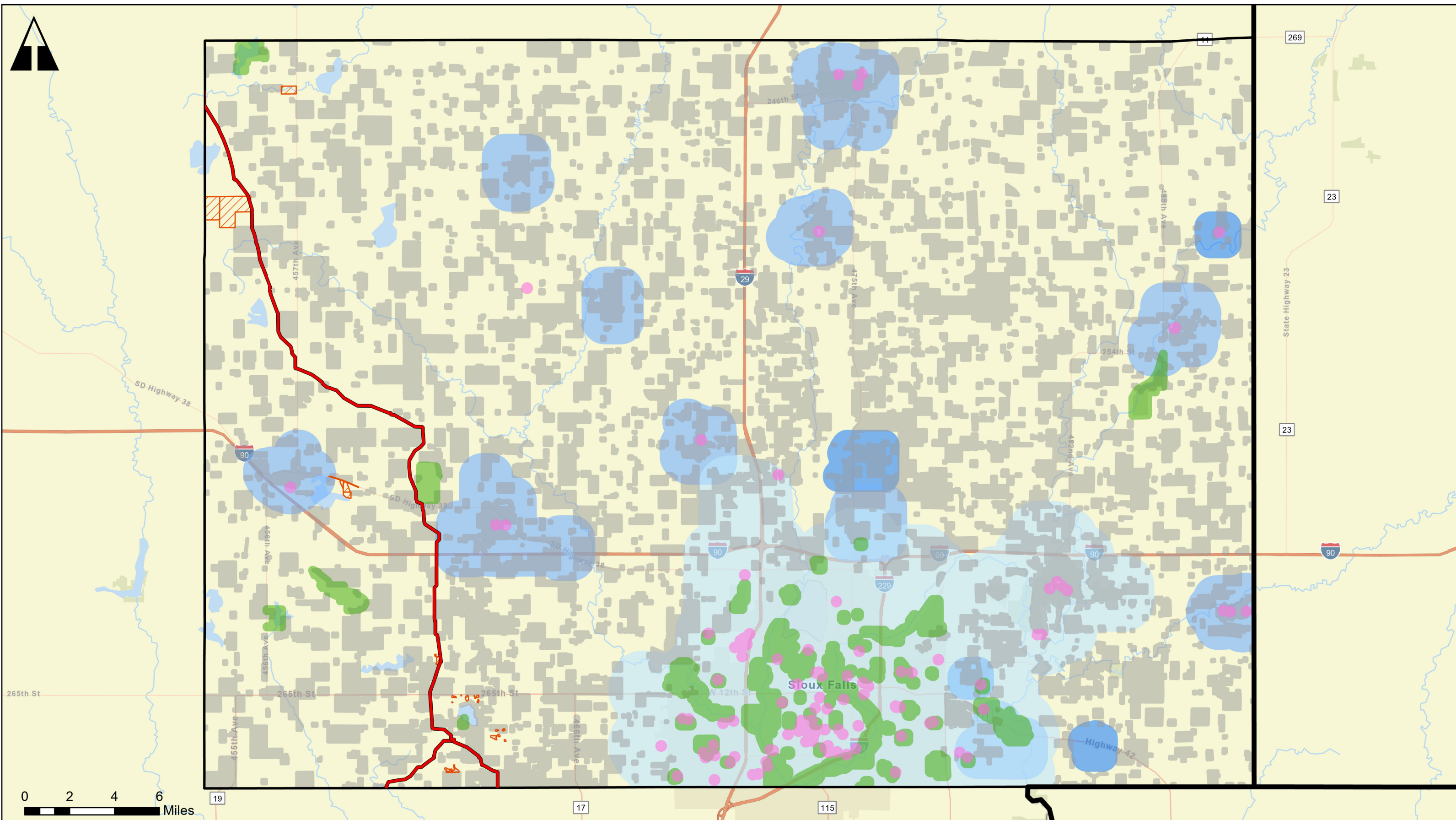
0 3 6 9 Miles

# MCPHERSON COUNTY, SOUTH DAKOTA SETBACK ORDINANCE

- MCE Pipeline Route
- County Boundary
- Setback 5280 ft. (Structures)
- Grassland Easements







# MINNEHAHA COUNTY, SOUTH DAKOTA

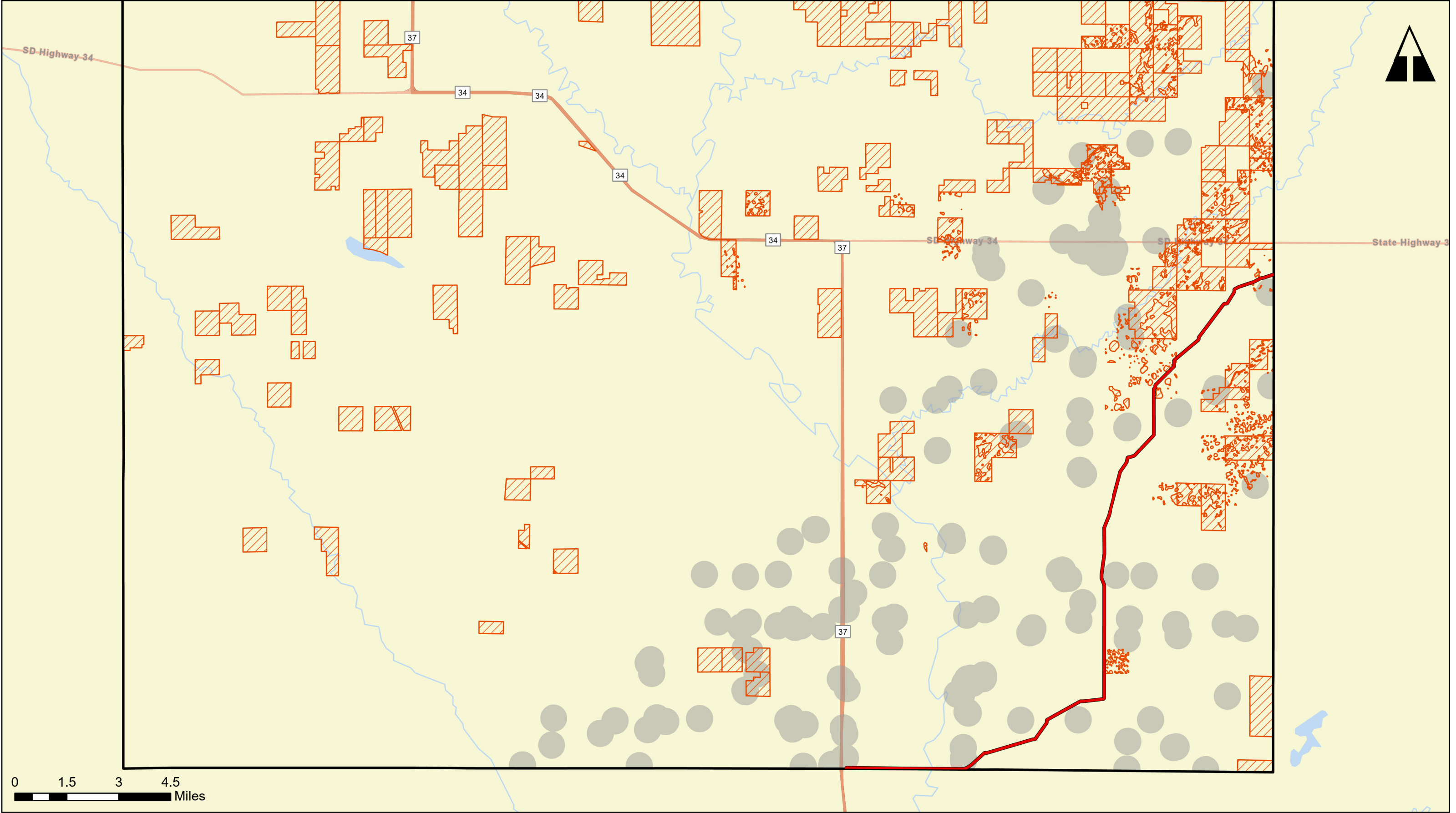
## SETBACK ORDINANCE

- MCE Pipeline Route
- County Boundary
- Grassland Easements
- Setback 1000 ft. (Parks)
- Setback 1000 ft. (Schools)
- Setback 330 ft. (Property Boundary)
- Setback 1 Mile - First Class (Pop. > 5,000)
- Setback 3/4 Mile - Second Class (Pop. Between 500 - 5,000)
- Setback 1/2 Mile - Third Class (Pop. < 500)



Pipeline centerline is based on the 11/14/2024 route.





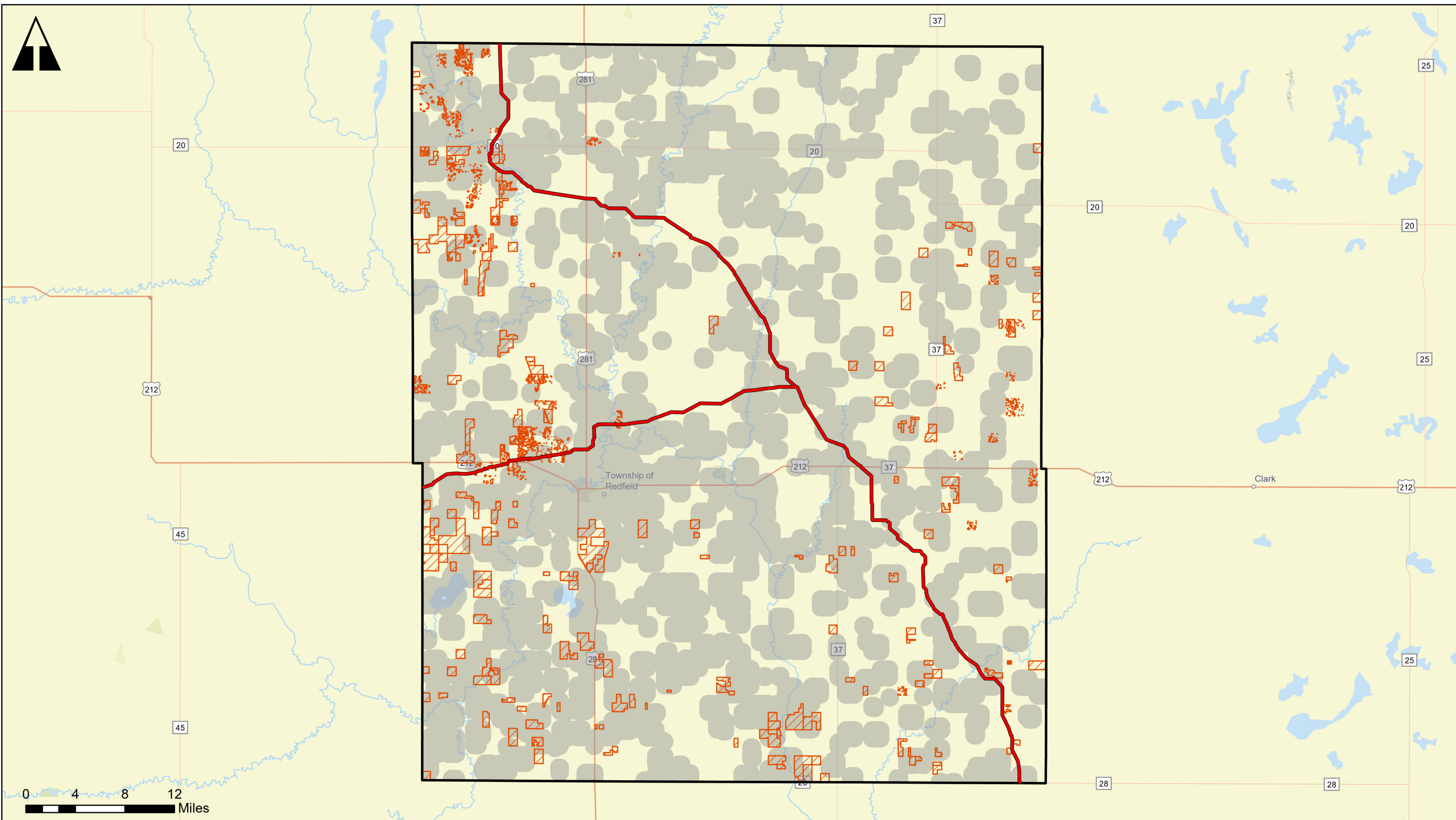
**SANBORN COUNTY, SOUTH DAKOTA**  
**SETBACK ORDINANCE**

- MCE Pipeline Route
- County Boundary
- Setback 1500 ft. (Structures)
- Grassland Easements



Pipeline centerline is based on the 11/14/2024 route.





# SPINK COUNTY, SOUTH DAKOTA SETBACK ORDINANCE

- MCE Pipeline Route
- County Boundary
- Setback 2640 ft. (Property Boundary)
- Grassland Easements

Page 7  
NOTE: 2 mile setback from High Consequence Areas is not included in map



Pipeline centerline is based on the 11/14/2024 route.