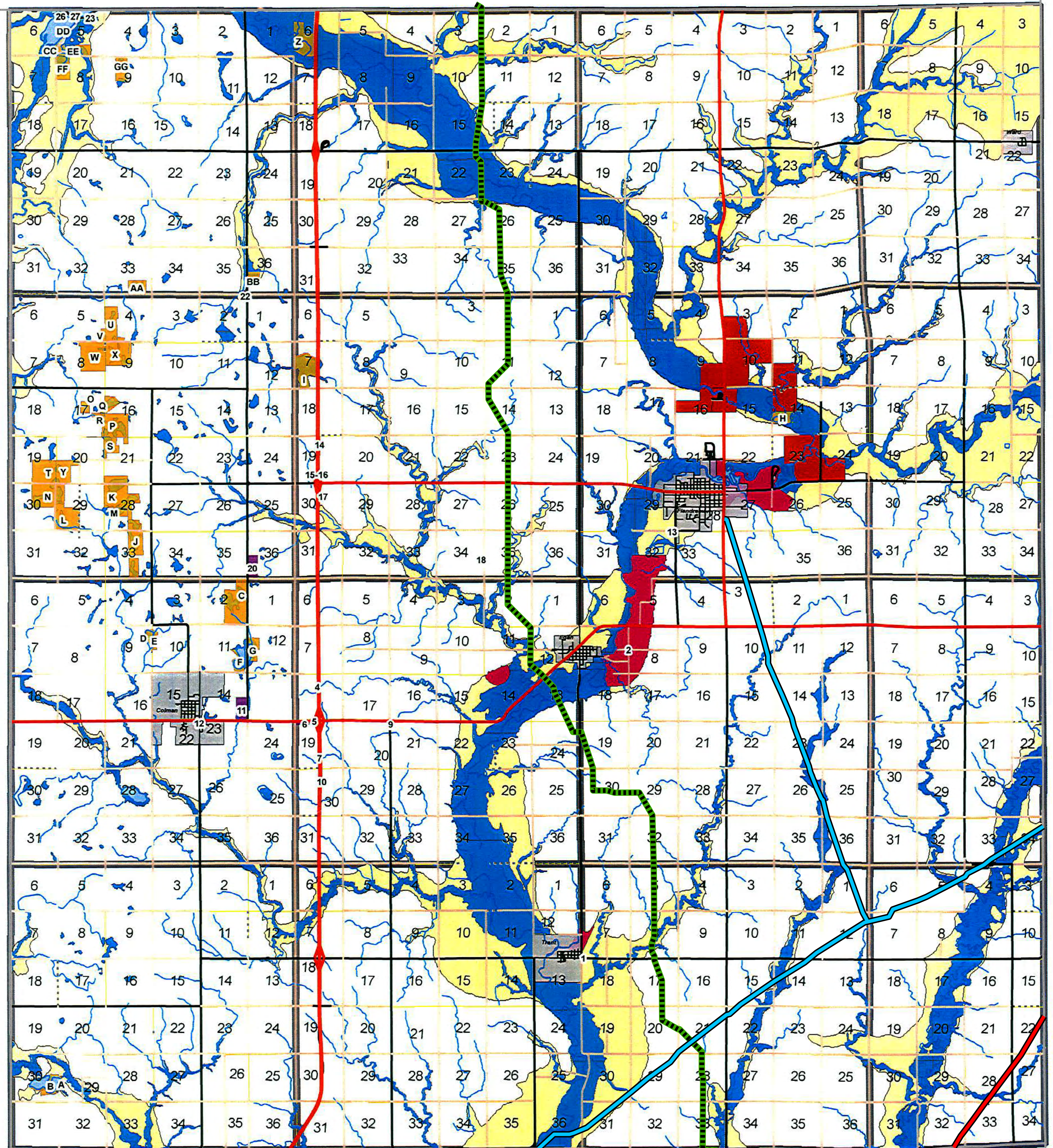


Legend



- State and Federal Highways
- County Roads**
- Surface Type**
- 1 - Primitive (Trail)
- 2 - Unimproved
- 5 - Gravel or Crushed Rock
- 8 - Bituminous
- 9 - Concrete
- CI-Commercial/Industrial
- LP-Lake Park
- NR-Natural Resources
- A-Agricultural
- City Boundaries
- Wellhead Protection Area
- Tribal Trust Lands
- FP-Floodplain
- AP-Aquifer Protection



- Moody County Hazardous Liquid Pipelines
- Moody Gas Transmission Pipelines
- Heartland Greenway CO2 Pipeline
- South Dakota County Boundaries

MOODY COUNTY ZONING MAP (2010)

EXHIBIT N75