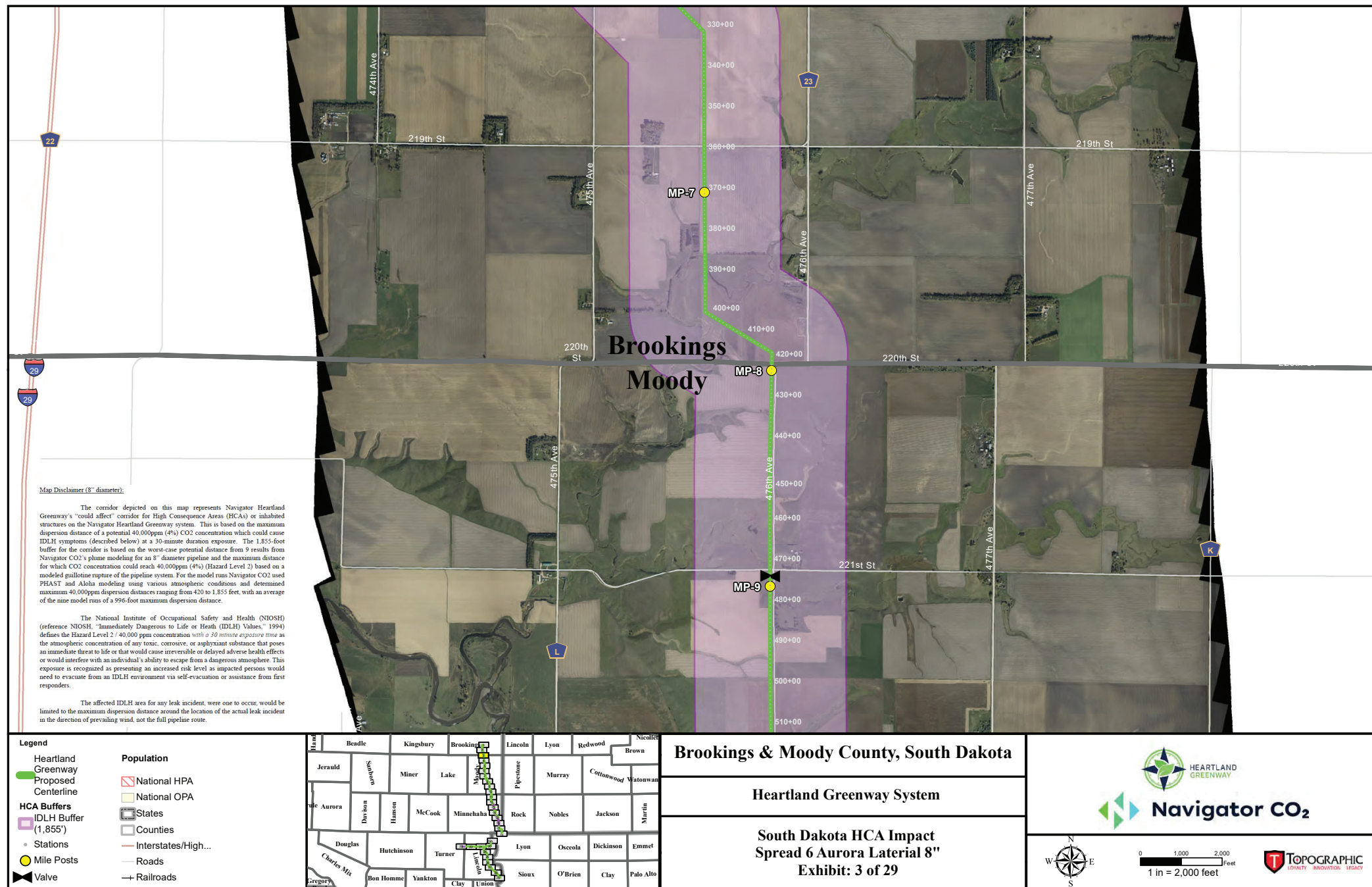
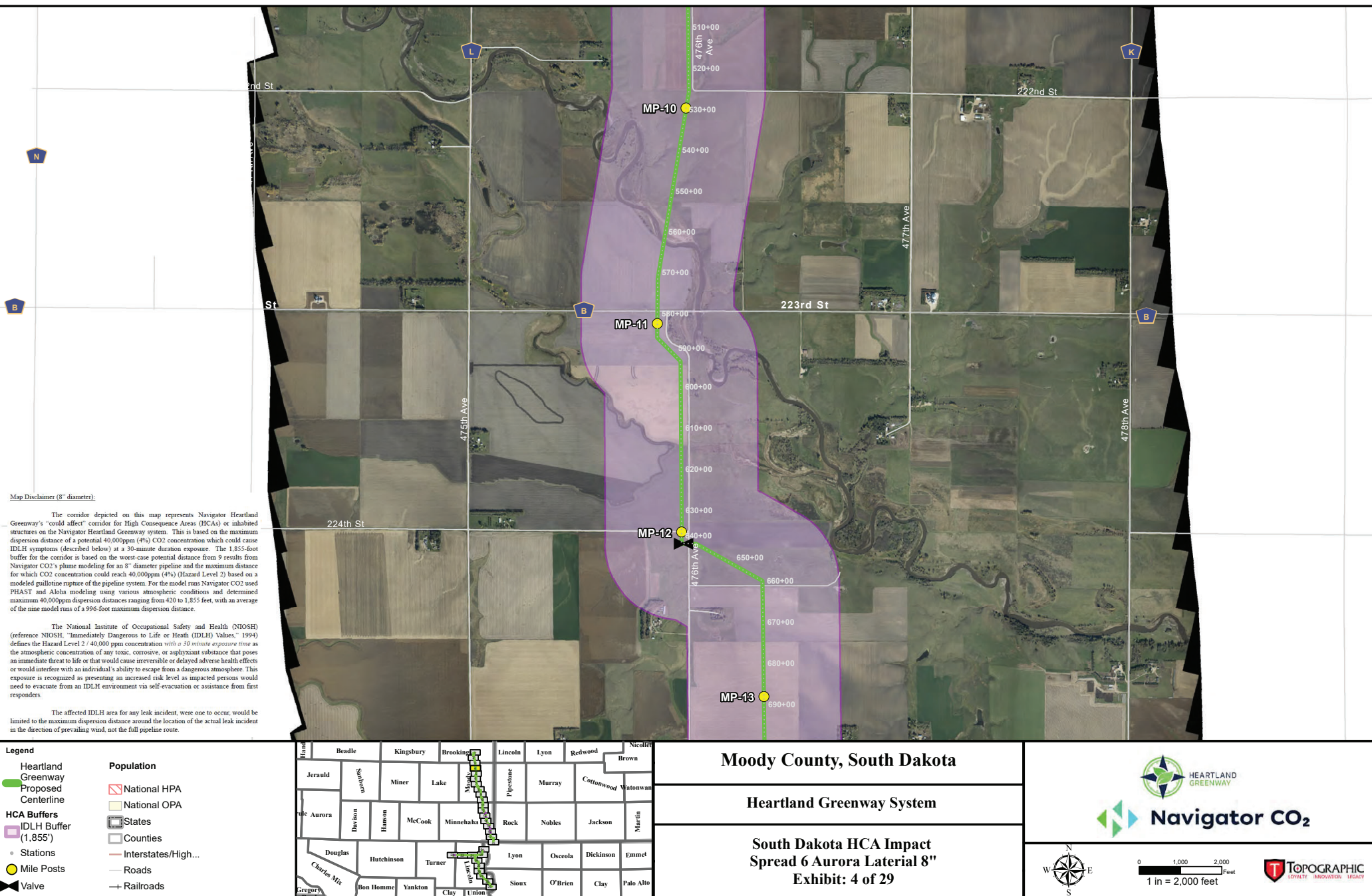
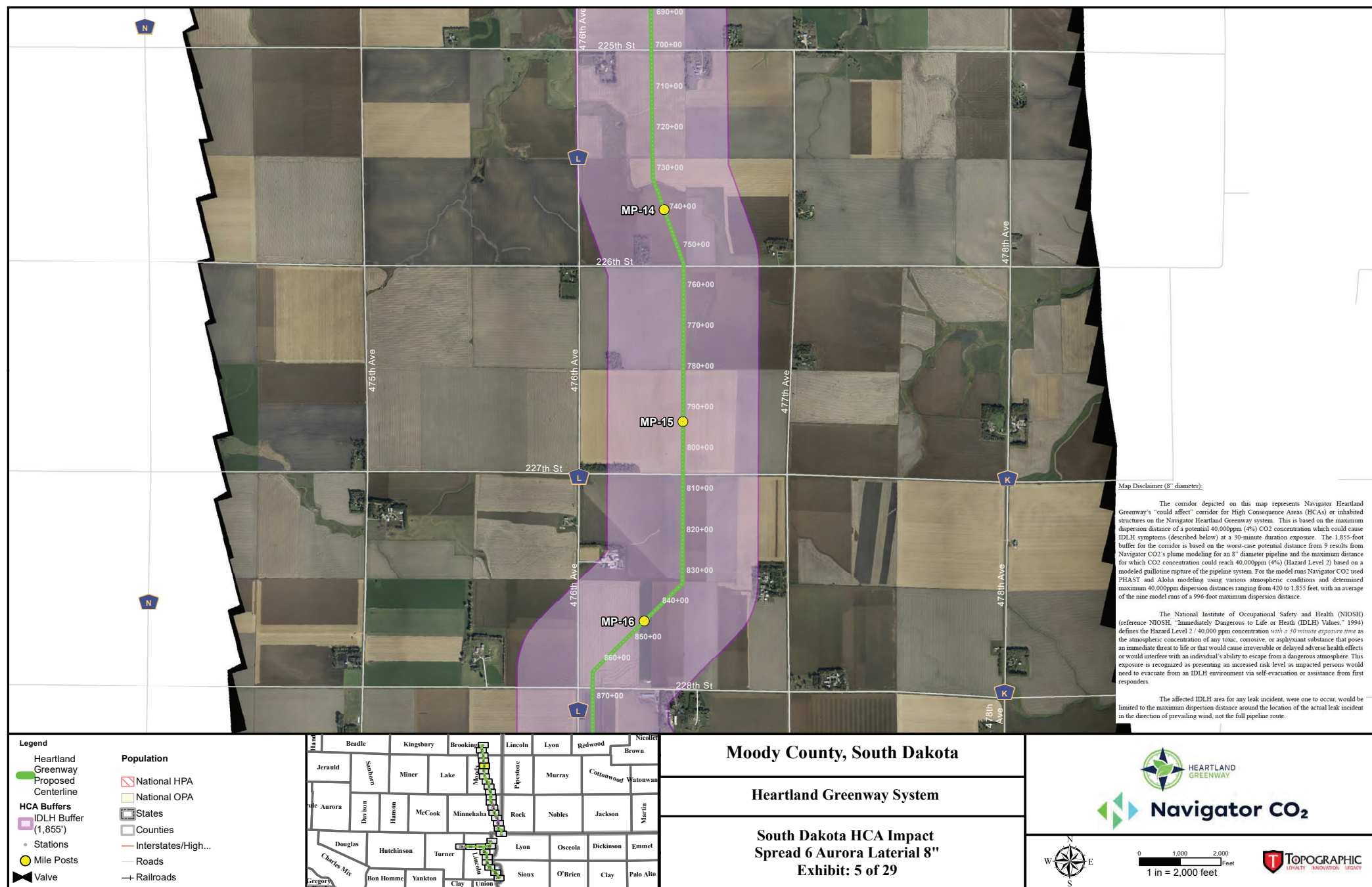


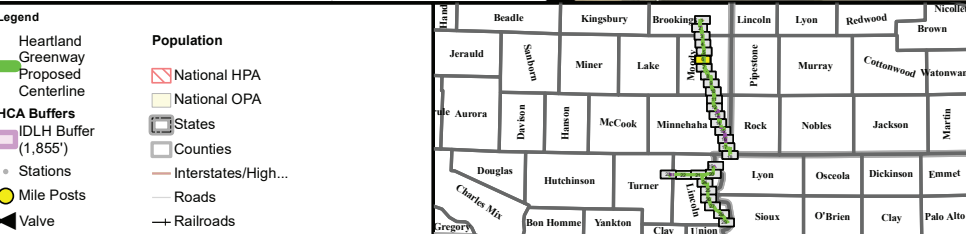
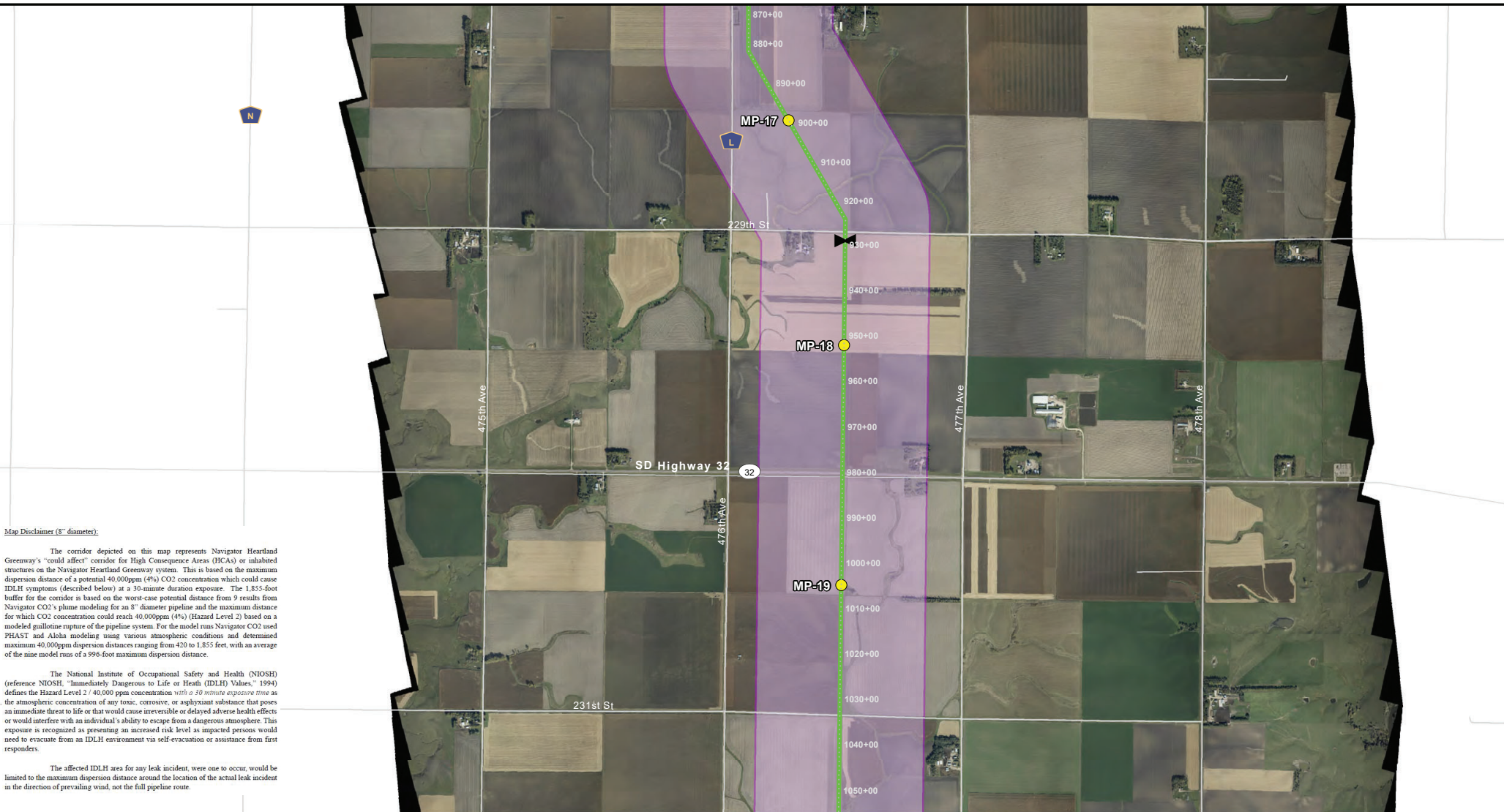
0 1,000 2,000 Feet
1 in = 2,000 feet











Moody County, South Dakota

Heartland Greenway System

South Dakota HCA Impact
Spread 6 Aurora Lateral 8"
Exhibit: 6 of 29



0 1,000 2,000
Feet
1 in = 2,000 feet



Map Disclaimer (8" diameter):

The corridor depicted on this map represents Navigator Heartland Greenway's "could affect" corridor for High Consequence Areas (HCAs) or inhabited structures on the Navigator Heartland Greenway system. This is based on the maximum dispersion distance of a potential 40,000ppm (4%) CO₂ concentration which could cause IDLH symptoms (described below) at a 30-minute duration exposure. The 1,855-foot buffer for the corridor is based on the worst-case potential distance from 9 results from Navigator CO₂'s plume modeling for an 8" diameter pipeline and the maximum distance for which CO₂ concentration could reach 40,000ppm (4%) (Hazard Level 2) based on a modeled gullotine rupture of the pipeline system. For the model runs Navigator CO₂ used PHAST and Aloha modeling using various atmospheric conditions and determined maximum 40,000ppm dispersion distances ranging from 420 to 1,855 feet, with an average of the nine model runs of a 996-foot maximum dispersion distance.

The National Institute of Occupational Safety and Health (NIOSH) (reference NIOSH, "Immediately Dangerous to Life or Health (IDLH) Values," 1994) defines the Hazard Level 2 / 40,000 ppm concentration with a 30 minute exposure time as the atmospheric concentration of any toxic, corrosive, or asphyxiant substance that poses an immediate threat to life or that would cause irreversible or delayed adverse health effects or would interfere with an individual's ability to escape from a dangerous atmosphere. This exposure is recognized as presenting an increased risk level as impacted persons would need to evacuate from an IDLH environment via self-evacuation or assistance from first responders.

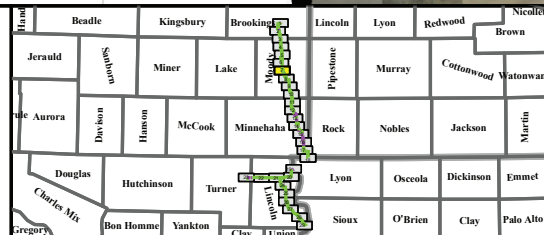
The affected IDLH area for any leak incident, were one to occur, would be limited to the maximum dispersion distance around the location of the actual leak incident in the direction of prevailing wind, not the full pipeline route.

Legend

- Heartland Greenway
- Proposed Centerline
- HCA Buffers
 - IDLH Buffer (1,855')
- Stations
- Mile Posts
- Valve

Population

- National HPA
- National OPA
- States
- Counties
- Interstates/Highways
- Roads
- Railroads



Moody County, South Dakota

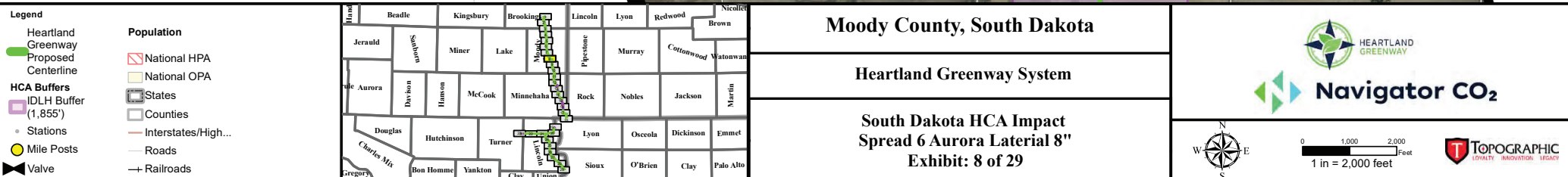
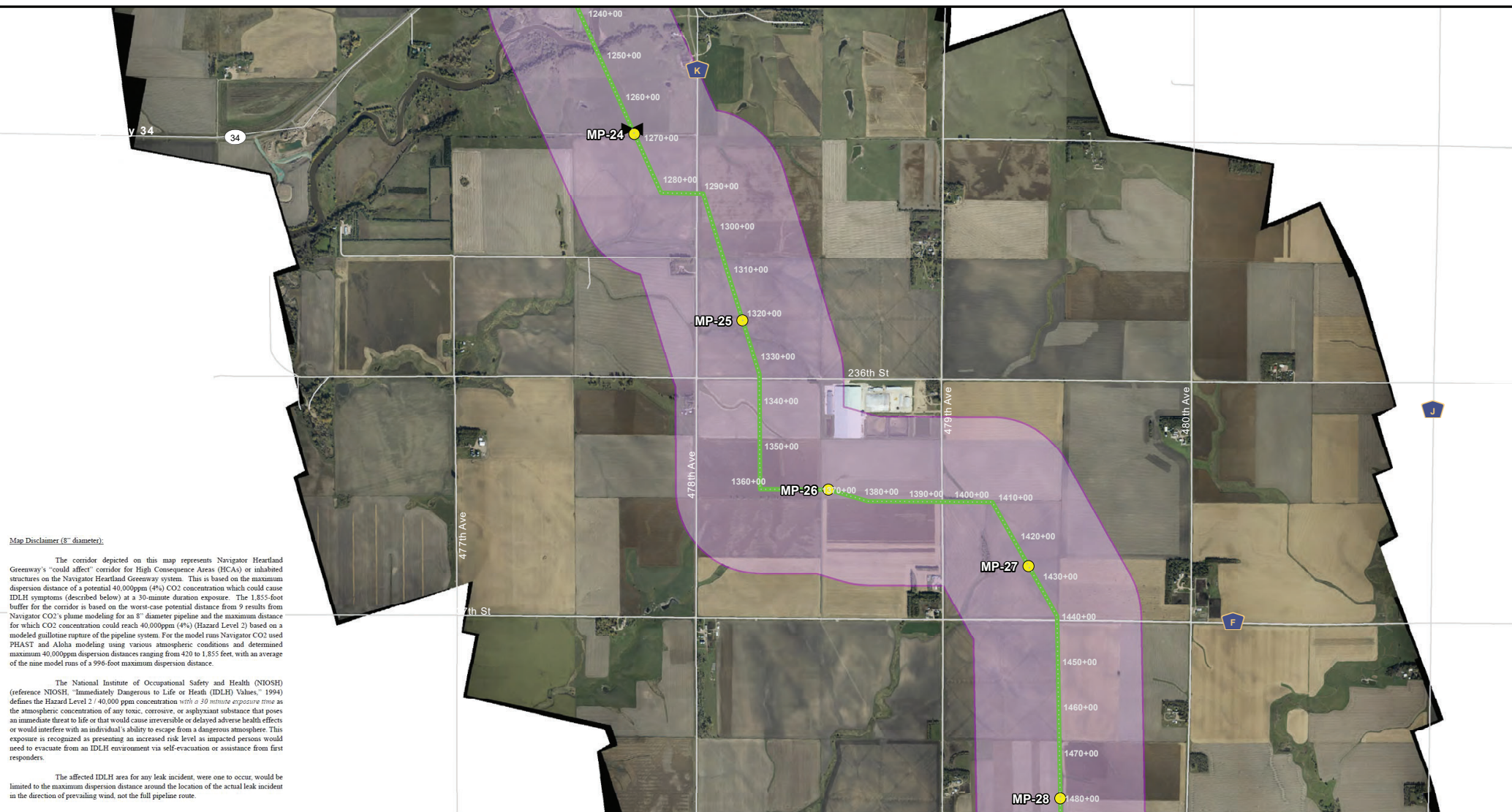
Heartland Greenway System

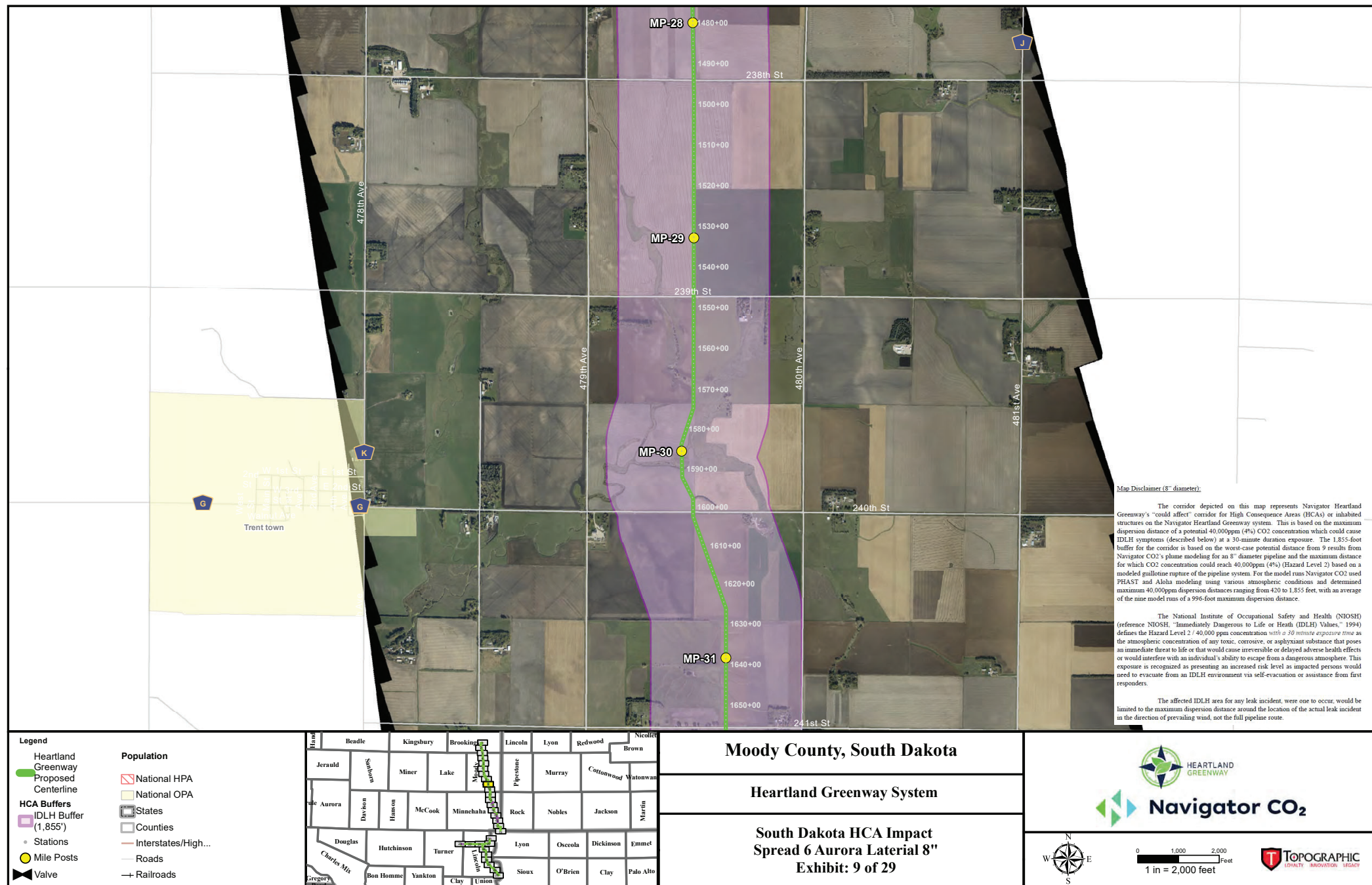
South Dakota HCA Impact
Spread 6 Aurora Lateral 8"
Exhibit: 7 of 29

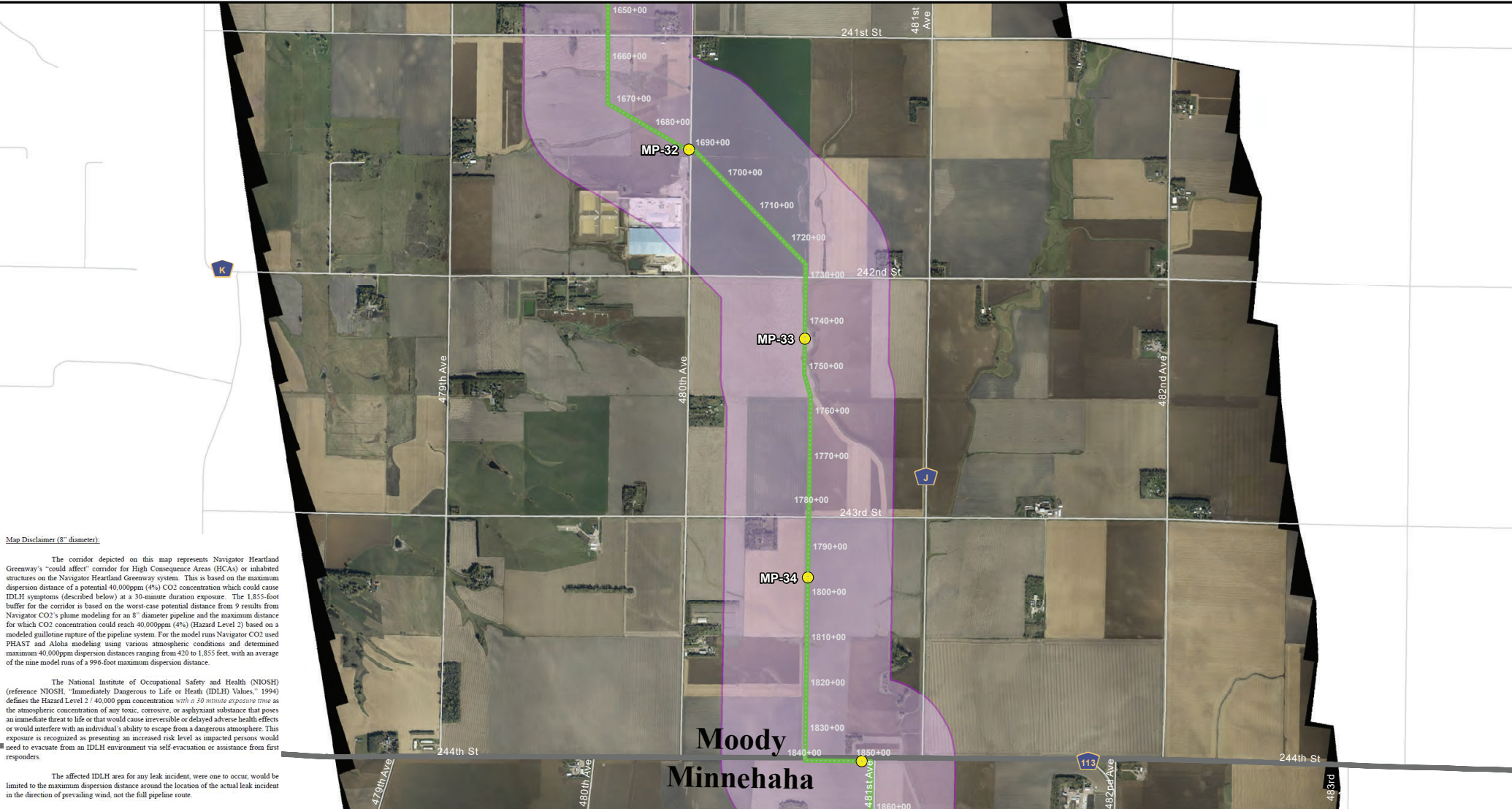


0 1,000 2,000 Feet
1 in = 2,000 feet









Map Disclaimer (8" diameter).

The corridor depicted on this map represents Navigator Heartland Greenway's "could affect" corridor for High Consequence Areas (HCAs) or inhabited structures on the Navigator Heartland Greenway system. This is based on the maximum dispersion distance of a potential 40,000ppm (4%) CO2 concentration which could cause IDLH symptoms (described below) at a 30-minute duration exposure. The 1,855-foot buffer for the corridor is based on the worst-case potential distance from 9 results from Navigator CO2's plume modeling for an 8" diameter pipeline and the maximum distance for which CO2 concentration could reach 40,000ppm (4%) (Hazard Level 2) based on a modeled guillotine rupture of the pipeline system. For the model runs Navigator CO2 used PHAST and Aloha modeling using various atmospheric conditions and determined maximum 40,000ppm dispersion distances ranging from 420 to 1,855 feet, with an average of the nine model runs of a 996-foot maximum dispersion distance.

The National Institute of Occupational Safety and Health (NIOSH) (reference NIOSH, "Immediately Dangerous to Life or Health (IDLH) Values," 1994) defines the Hazard Level 2 / 40,000 ppm concentration with a 30 minute exposure time as the atmospheric concentration of any toxic, corrosive, or asphyxiant substance that poses an immediate threat to life or that would cause irreversible or delayed adverse health effects or would interfere with an individual's ability to escape from a dangerous atmosphere. This exposure is recognized as presenting an increased risk level as impacted persons would need to evacuate from an IDLH environment via self-evacuation or assistance from first responders.

The affected IDLH area for any leak incident, were one to occur, would be limited to the maximum dispersion distance around the location of the actual leak incident in the direction of prevailing wind, not the full pipeline route.

Legend

- Heartland Greenway
- Proposed Centerline
- HCA Buffers
 - IDLH Buffer (1,855')
- Stations
- Mile Posts
- Valve

Population

- National HPA
- National OPA
- States
- Counties
- Interstates/Highways
- Roads
- Railroads

Moody County, South Dakota

Heartland Greenway System

South Dakota HCA Impact Spread 6 Aurora Lateral 8"

Exhibit: 10 of 29

Navigator CO₂

0 1,000 2,000 Feet

1 in = 2,000 feet





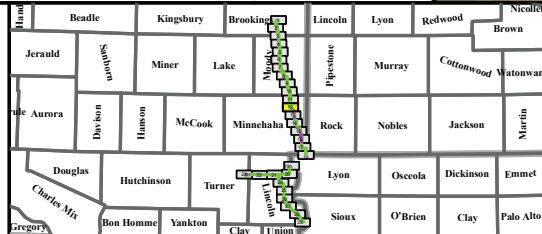
Map Disclaimer (8" diameter).

The corridor depicted on this map represents Navigator Heartland Greenway's "could affect" corridor for High Consequence Areas (HCA) or inhabited structures on the Navigator Heartland Greenway system. This is based on the maximum dispersion distance of a potential 40,000ppm (4%) CO₂ concentration which could cause IDLH symptoms (described below) at a 30-minute duration exposure. The 1,855-foot buffer for the corridor is based on the worst-case potential distance from 9 results from Navigator CO₂'s plume modeling for an 8" diameter pipeline and the maximum distance for which CO₂ concentration could reach 40,000ppm (4%) (Hazard Level 2) based on a modeled guillotine rupture of the pipeline system. For the model runs Navigator CO₂ used PEA57 and Aloha modeling using various atmospheric conditions and determined maximum 40,000ppm dispersion distances ranging from 420 to 1,855 feet, with an average of the nine model runs of a 996-foot maximum dispersion distance.

The National Institute of Occupational Safety and Health (NIOSH) (reference NIOSH, "Immediately Dangerous to Life or Health (IDLH) Values," 1994) defines the Hazard Level 2 / 40,000 ppm concentration with a 30 minute exposure time as the atmospheric concentration of any toxic, corrosive, or asphyxiant substance that poses an immediate threat to life or that would cause irreversible or delayed adverse health effects or would interfere with an individual's ability to escape from a dangerous atmosphere. This exposure is recognized as presenting an increased risk level as impacted persons would need to evacuate from an IDLH environment via self-evacuation or assistance from first responders.

The affected IDLH area for any leak incident, were one to occur, would be limited to the maximum dispersion distance around the location of the actual leak incident in the direction of prevailing wind, not the full pipeline route.

- Legend**
- Heartland Greenway
 - Proposed Centerline
 - HCA Buffers
 - IDLH Buffer (1,855')
 - Stations
 - Mile Posts
 - Valve
- Population**
- National HPA
 - National OPA
 - States
 - Counties
 - Interstates/Highways
 - Roads
 - Railroads



Minnehaha County, South Dakota

Heartland Greenway System

South Dakota HCA Impact
Spread 6 Aurora Lateral 8"
Exhibit: 12 of 29



0 1,000 2,000
Feet
1 in = 2,000 feet



Map Disclaimer (8" diameter):

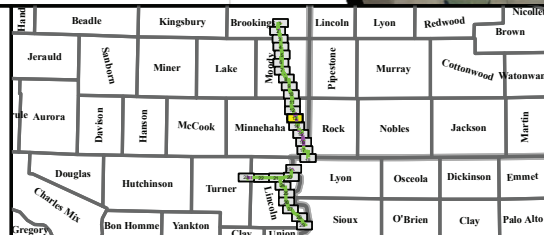
The corridor depicted on this map represents Navigator Heartland Greenway's "could affect" corridor for High Consequence Areas (HCAs) or inhabited structures on the Navigator Heartland Greenway system. This is based on the maximum dispersion distance of a potential 40,000ppm (4%) CO₂ concentration which could cause IDLH symptoms (described below) at a 30-minute duration exposure. The 1,855-foot buffer for the corridor is based on the worst-case potential distance from 9 results from Navigator CO₂'s plume modeling for an 8" diameter pipeline and the maximum distance for which CO₂ concentration could reach 40,000ppm (4%) (Hazard Level 2) based on a modeled pullout rupture of the pipeline system. For the model run Navigator CO₂ used PHAST and Aloha modeling using various atmospheric conditions and determined maximum 40,000ppm dispersion distances ranging from 420 to 1,855 feet, with an average of the nine model runs of a 996-foot maximum dispersion distance.

The National Institute of Occupational Safety and Health (NIOSH) (reference NIOSH, "Immediately Dangerous to Life or Health (IDLH) Values," 1994) defines the Hazard Level 2 / 40,000 ppm concentration with a 30 minute exposure time as the atmospheric concentration of any toxic, corrosive, or asphyxiant substance that poses an immediate threat to life or that would cause irreversible or delayed adverse health effects or would interfere with an individual's ability to escape from a dangerous atmosphere. This exposure is recognized as presenting an increased risk level as impacted persons would need to evacuate from an IDLH environment via self-evacuation or assistance from first responders.

The affected IDLH area for any leak incident, were one to occur, would be limited to the maximum dispersion distance around the location of the actual leak incident in the direction of prevailing wind, not the full pipeline route.

Legend

- Heartland Greenway
- Proposed Centerline
- HCA Buffers**
 - IDLH Buffer (1,855')
- Stations
- Mile Posts
- Valve
- Population**
 - National HPA
 - National OPA
 - States
 - Counties
 - Interstates/Highways
 - Roads
 - Railroads

**Minnehaha County, South Dakota****Heartland Greenway System**

**South Dakota HCA Impact
Spread 6 Aurora Lateral 8"**
Exhibit: 13 of 29



0 1,000 2,000
Feet
1 in = 2,000 feet



Map Disclaimer (8" diameter):

The corridor depicted on this map represents Navigator Heartland Greenway's "could affect" corridor for High Consequence Areas (HCAs) or inhabited structures on the Navigator Heartland Greenway system. This is based on the maximum dispersion distance of a potential 40,000ppm (4%) CO₂ concentration which could cause IDLH symptoms (described below) at a 30-minute duration exposure. The 1,855-foot buffer for the corridor is based on the worst-case potential distance from 9 results from Navigator CO₂'s plume modeling for an 8" diameter pipeline and the maximum distance for which CO₂ concentration could reach 40,000ppm (4%) (Hazard Level 2) based on a modeled pipeline rupture of the pipeline system. For the model runs Navigator CO₂ used PHAST and Aloha modeling using various atmospheric conditions and determined maximum 40,000ppm dispersion distances ranging from 420 to 1,855 feet, with an average of the nine model runs of a 996-foot maximum dispersion distance.

The National Institute of Occupational Safety and Health (NIOSH) (reference NIOSH, "Immediately Dangerous to Life or Health (IDLH) Values," 1994) defines the Hazard Level 2 / 40,000 ppm concentration with a 30 minute exposure time as the atmospheric concentration of any toxic, corrosive, or asphyxiant substance that poses an immediate threat to life or that would cause irreversible or delayed adverse health effects or would interfere with an individual's ability to escape from a dangerous atmosphere. This exposure is recognized as presenting an increased risk level as impacted persons would need to evacuate from an IDLH environment via self-evacuation or assistance from first responders.

The affected IDLH area for any leak incident, were one to occur, would be limited to the maximum dispersion distance around the location of the actual leak incident in the direction of prevailing wind, not the full pipeline route.

Legend

- Heartland Greenway
- Proposed Centerline
- HCA Buffers
 - IDLH Buffer (1,855')
- Stations
- Mile Posts
- Valve
- Population
 - National HPA
 - National OPA
 - States
 - Counties
 - Interstates/Highways
 - Roads
 - Railroads



Minnehaha County, South Dakota

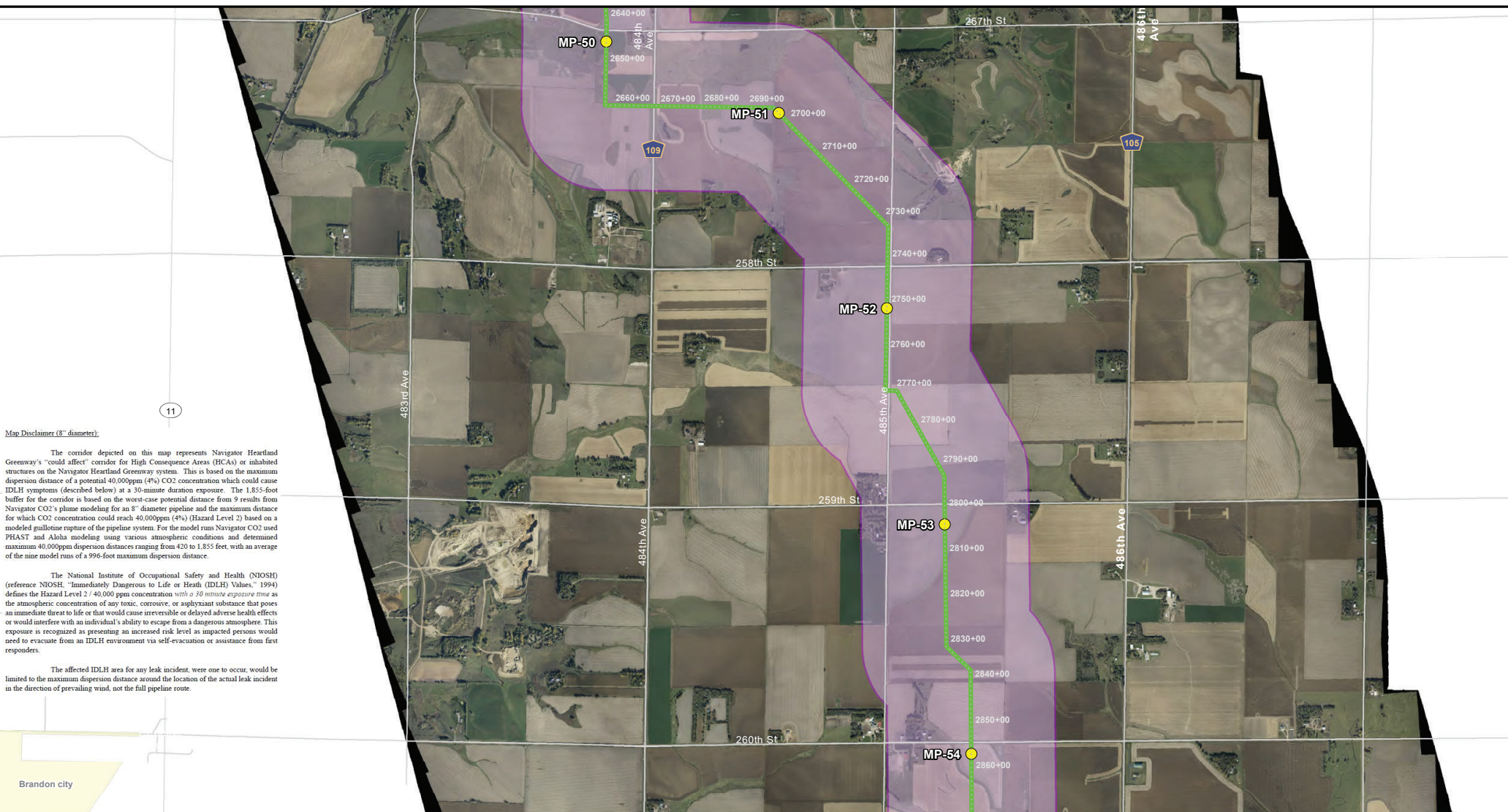
Heartland Greenway System

South Dakota HCA Impact
Spread 6 Aurora Lateral 8"
Exhibit: 14 of 29



0 1,000 2,000
Feet
1 in = 2,000 feet





Map Disclaimer (8" diameter):

The corridor depicted on this map represents Navigator Heartland Greenway's "could affect" corridor for High Consequence Areas (HCAs) or inhabited structures on the Navigator Heartland Greenway system. This is based on the maximum dispersion distance of a potential 40,000ppm (4%) CO₂ concentration which could cause IDLH symptoms (described below) at a 30-minute duration exposure. The 1,855-foot buffer for the corridor is based on the worst-case potential distance from 9 results from Navigator CO₂'s plume modeling for an 8" diameter pipeline and the maximum distance for which CO₂ concentration could reach 40,000ppm (4%) (Hazard Level 2) based on a modeled guillotine rupture of the pipeline system. For the model runs Navigator CO₂ used PHAST and Aloha modeling using various atmospheric conditions and determined maximum 40,000ppm dispersion distances ranging from 420 to 1,855 feet, with an average of the nine model runs of a 996-foot maximum dispersion distance.

The National Institute of Occupational Safety and Health (NIOSH) (reference NIOSH, "Immediately Dangerous to Life or Health (IDLH) Values," 1994) defines the Hazard Level 2 / 40,000 ppm concentration with a 30 minute exposure time as the atmospheric concentration of any toxic, corrosive, or asphyxiant substance that poses an immediate threat to life or that would cause irreversible or delayed adverse health effects or would interfere with an individual's ability to escape from a dangerous atmosphere. This exposure is recognized as presenting an increased risk level as impacted persons would need to evacuate from an IDLH environment via self-evacuation or assistance from first responders.

The affected IDLH area for any leak incident, were one to occur, would be limited to the maximum dispersion distance around the location of the actual leak incident in the direction of prevailing wind, not the full pipeline route.

Legend

- Heartland Greenway
- Proposed Centerline
- HCA Buffers
 - IDLH Buffer (1,855')
- Stations
- Mile Posts
- Valve
- Population
 - National HPA
 - National OPA
 - States
 - Counties
 - Interstates/Highways
 - Roads
 - Railroads



Minnehaha County, South Dakota

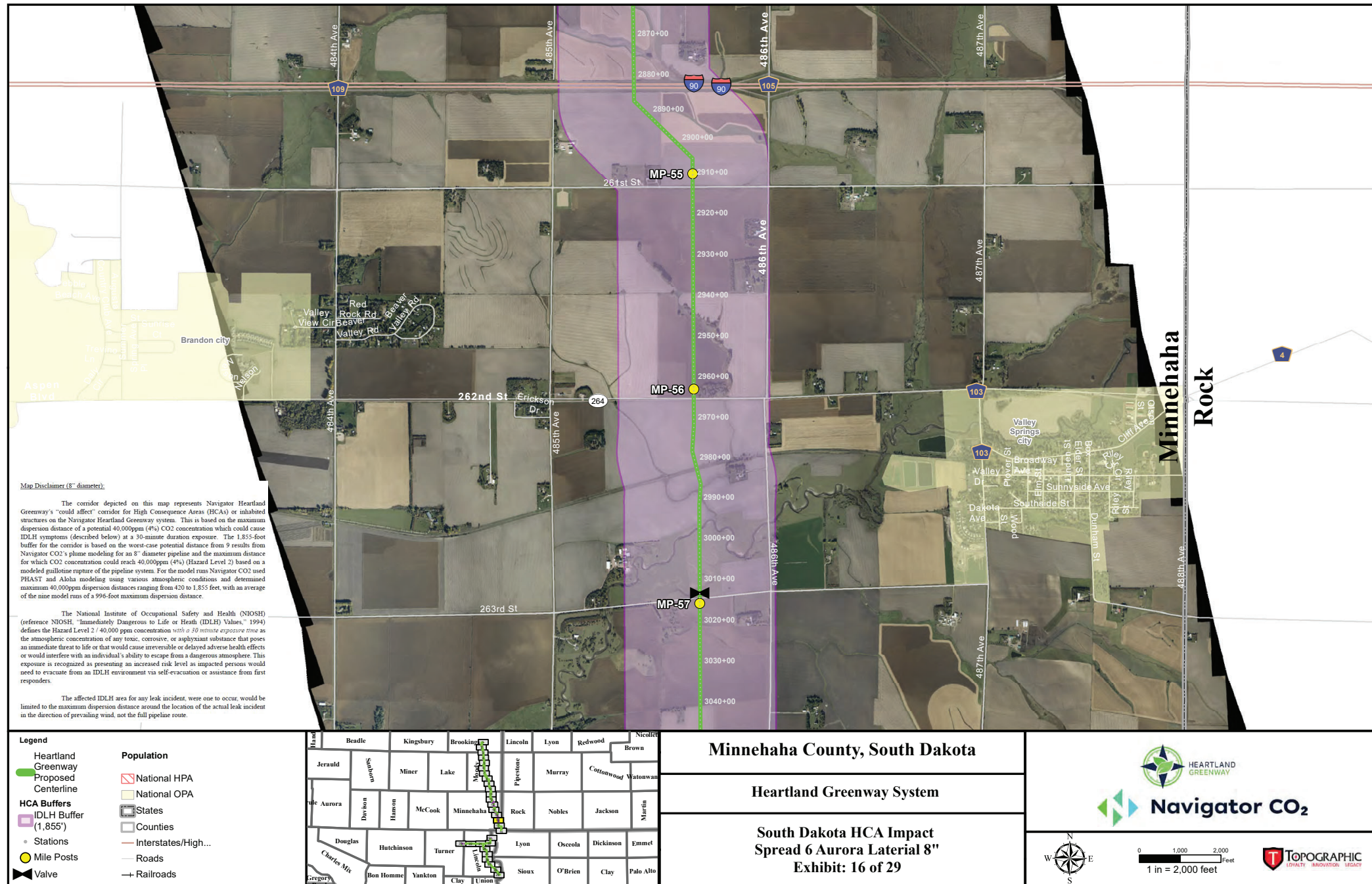
Heartland Greenway System

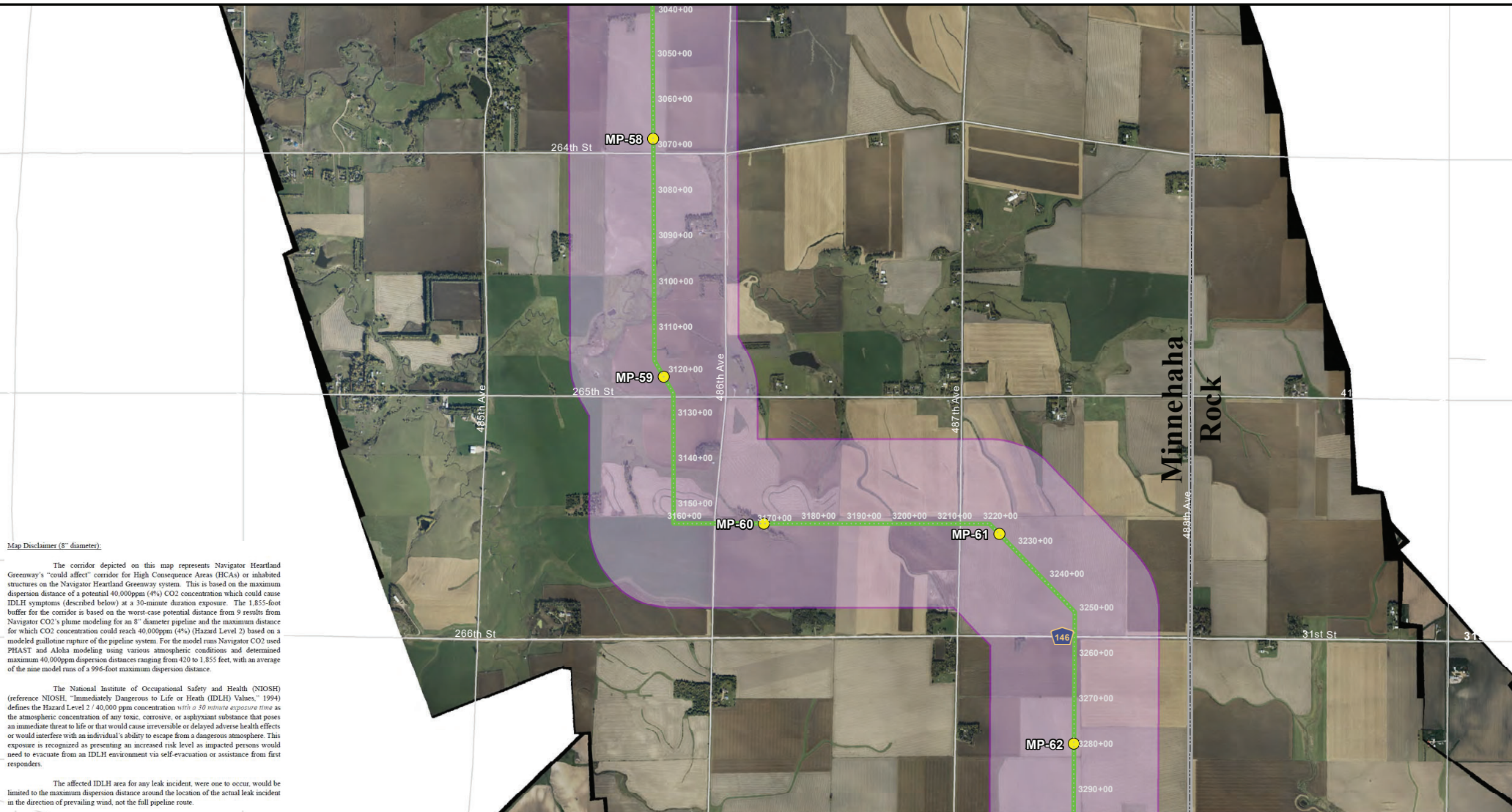
South Dakota HCA Impact
Spread 6 Aurora Lateral 8"
Exhibit: 15 of 29



0 1,000 2,000
Feet
1 in = 2,000 feet







Map Disclaimer (8" diameter).

The corridor depicted on this map represents Navigator Heartland Greenway's "could affect" corridor for High Consequence Areas (HCAs) or inhabited structures on the Navigator Heartland Greenway system. This is based on the maximum dispersion distance of a potential 40,000ppm (4%) CO₂ concentration which could cause IDLH symptoms (described below) at a 30-minute duration exposure. The 1,855-foot buffer for the corridor is based on the worst-case potential distance from 9 results from Navigator CO₂'s plume modeling for an 8" diameter pipeline and the maximum distance for which CO₂ concentration could reach 40,000ppm (4%) (Hazard Level 2) based on a modeled gullotine rupture of the pipeline system. For the model runs Navigator CO₂ used PHAST and Aloha modeling using various atmospheric conditions and determined maximum 40,000ppm dispersion distances ranging from 420 to 1,855 feet, with an average of the nine model runs of a 996-foot maximum dispersion distance.

The National Institute of Occupational Safety and Health (NIOSH) (reference NIOSH, "Immediately Dangerous to Life or Health (IDLH) Values," 1994) defines the Hazard Level 2 / 40,000 ppm concentration with a 30 minute exposure time as the atmospheric concentration of any toxic, corrosive, or asphyxiant substance that poses an immediate threat to life or that would cause irreversible or delayed adverse health effects or would interfere with an individual's ability to escape from a dangerous atmosphere. This exposure is recognized as presenting an increased risk level as impacted persons would need to evacuate from an IDLH environment via self-evacuation or assistance from first responders.

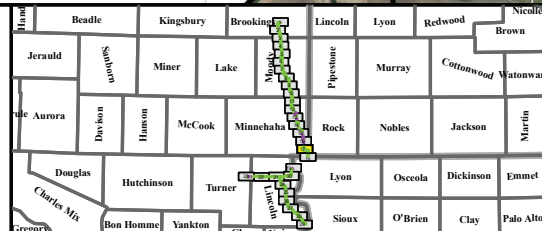
The affected IDLH area for any leak incident, were one to occur, would be limited to the maximum dispersion distance around the location of the actual leak incident in the direction of prevailing wind, not the full pipeline route.

Legend

- Heartland Greenway
- Proposed Centerline
- HCA Buffers
 - IDLH Buffer (1,855')
- Stations
- Mile Posts
- Valve

Population

- National HPA
- National OPA
- States
- Counties
- Interstates/High...
- Roads
- Railroads



Minnehaha County, South Dakota

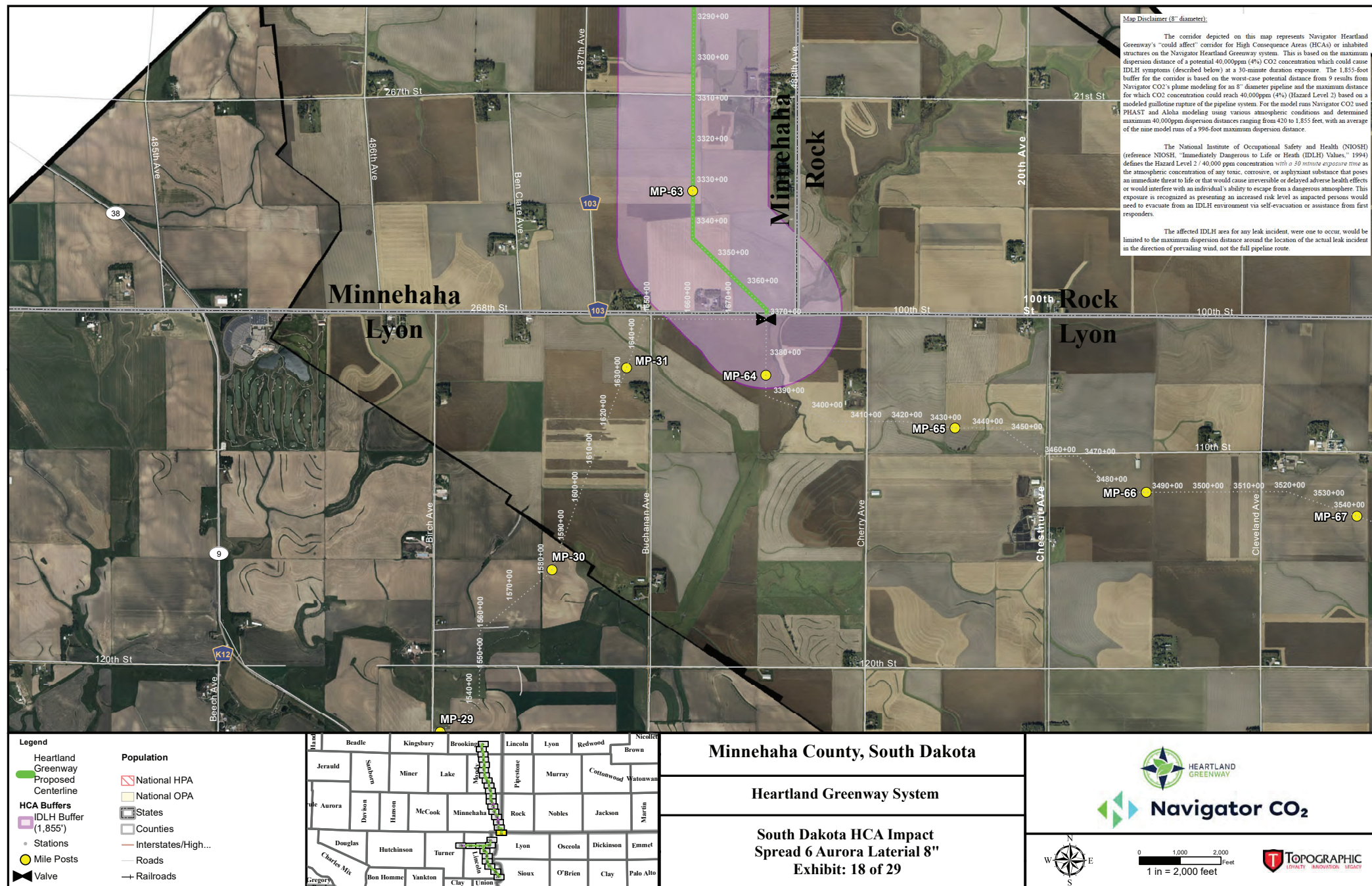
Heartland Greenway System

South Dakota HCA Impact
Spread 6 Aurora Lateral 8"
Exhibit: 17 of 29



0 1,000 2,000 Feet
1 in = 2,000 feet

TOPOGRAPHIC
LIABILITY - ALTERNATIVE - LEGACY

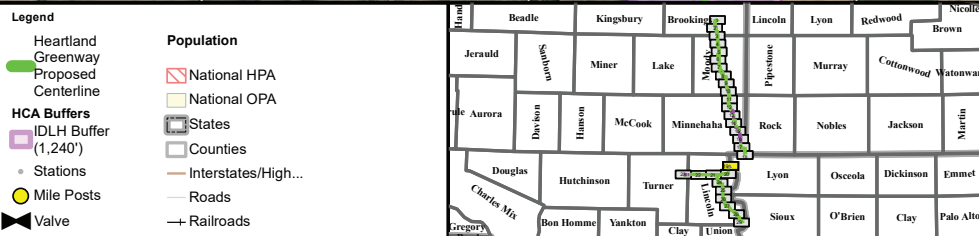
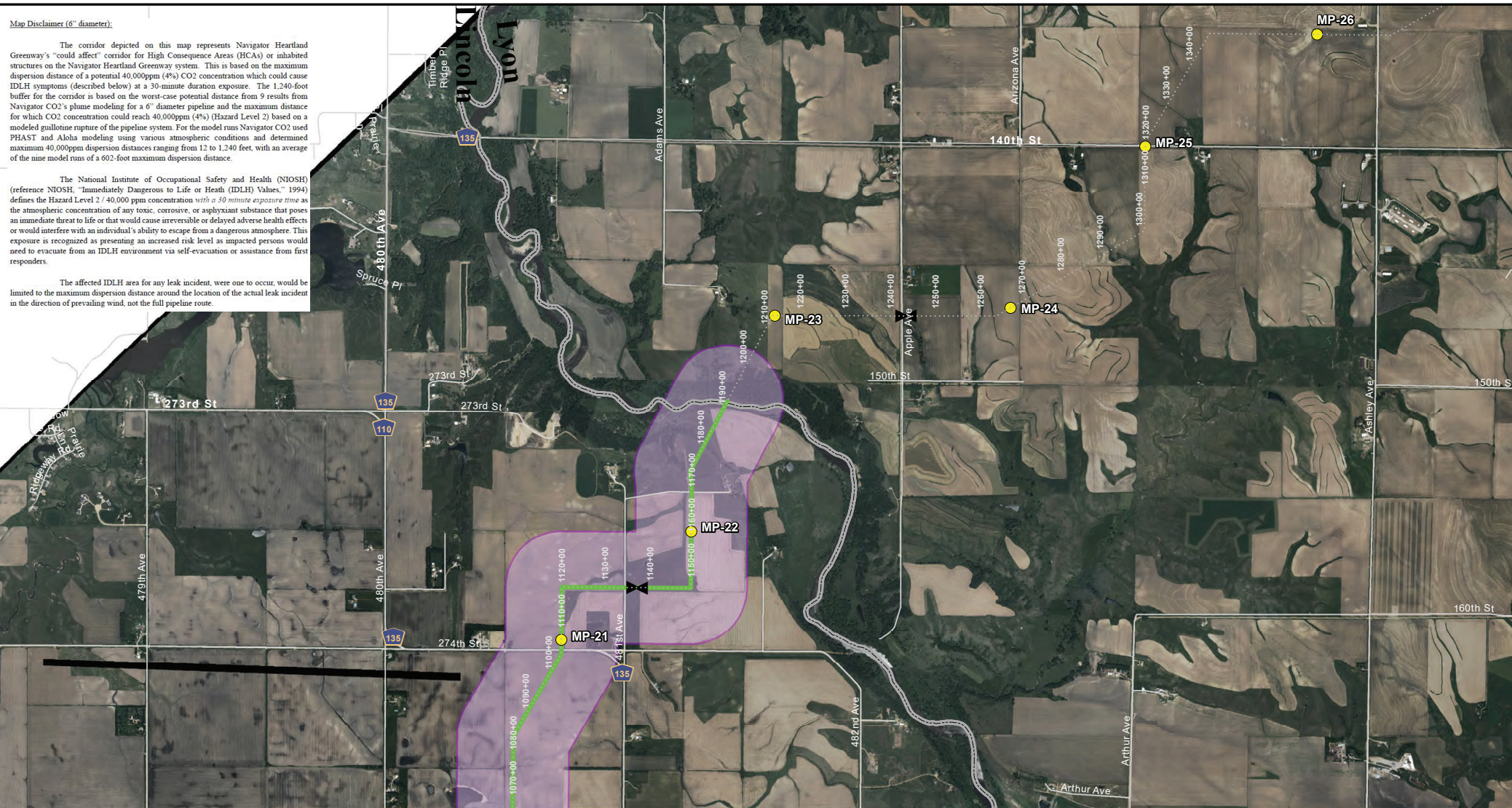


Map Disclaimer (6" diameter):

The corridor depicted on this map represents Navigator Heartland Greenway's "could affect" corridor for High Consequence Areas (HCAs) or inhabited structures on the Navigator Heartland Greenway system. This is based on the maximum dispersion distance of a potential 40,000ppm (4%) CO₂ concentration which could cause IDLH symptoms (described below) at a 30-minute duration exposure. The 1,240-foot buffer for the corridor is based on the worst-case potential distance from 9 results from Navigator CO₂'s plume modeling for a 6" diameter pipeline and the maximum distance for which CO₂ concentration could reach 40,000ppm (4%) (Hazard Level 2) based on a modeled guillotine rupture of the pipeline system. For the model runs Navigator CO₂ used PHAST and Aloha modeling using various atmospheric conditions and determined maximum 40,000ppm dispersion distances ranging from 12 to 1,240 feet, with an average of the nine model runs of a 602-foot maximum dispersion distance.

The National Institute of Occupational Safety and Health (NIOSH) (reference NIOSH, "Immediately Dangerous to Life or Health (IDLH) Values," 1994) defines the Hazard Level 2 / 40,000 ppm concentration with a 30 minute exposure time as the atmospheric concentration of any toxic, corrosive, or asphyxiant substance that poses an immediate threat to life or that would cause irreversible or delayed adverse health effects or would interfere with an individual's ability to escape from a dangerous atmosphere. This exposure is recognized as presenting an increased risk level as impacted persons would need to evacuate from an IDLH environment via self-evacuation or assistance from first responders.

The affected IDLH area for any leak incident, were one to occur, would be limited to the maximum dispersion distance around the location of the actual leak incident in the direction of prevailing wind, not the full pipeline route.



Lincoln County, South Dakota

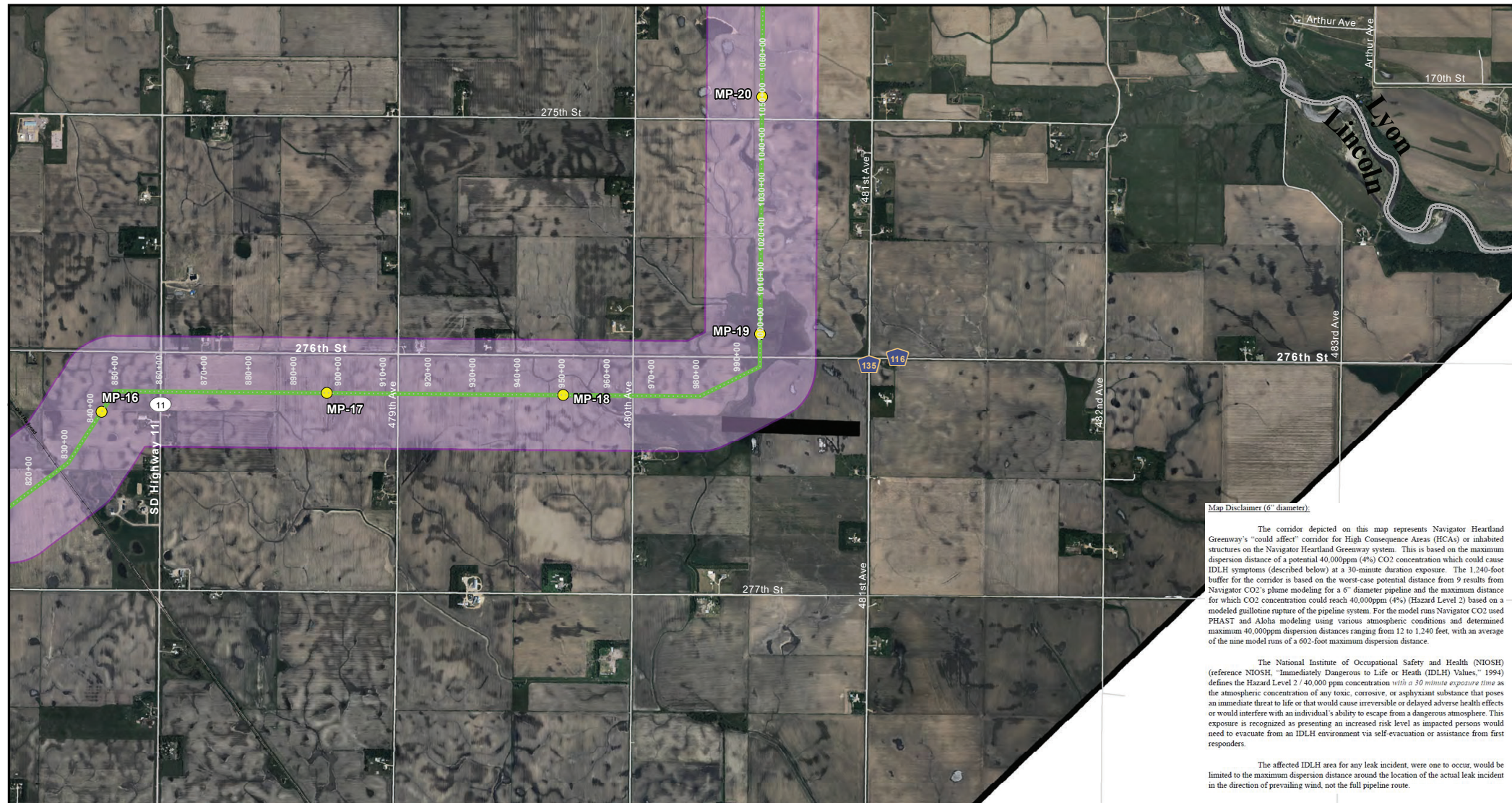
Heartland Greenway System

South Dakota HCA Impact
Spread 6A Chancellors Lateral 6"
Exhibit: 19 of 29



0 1,000 2,000
Feet
1 in = 2,000 feet



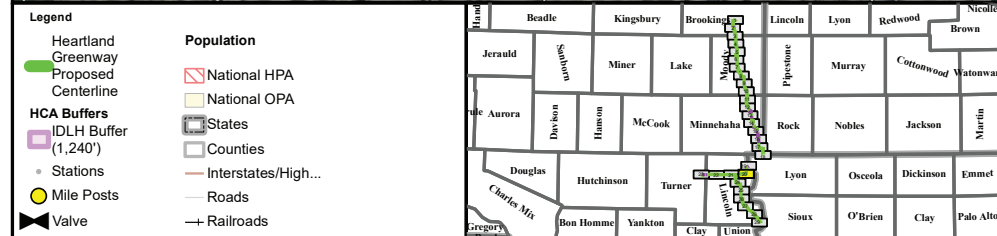


Map Disclaimer (6" diameter):

The corridor depicted on this map represents Navigator Heartland Greenway's "could affect" corridor for High Consequence Areas (HCAs) or inhabited structures on the Navigator Heartland Greenway system. This is based on the maximum dispersion distance of a potential 40,000ppm (4%) CO₂ concentration which could cause IDLH symptoms (described below) at a 30-minute duration exposure. The 1,240-foot buffer for the corridor is based on the worst-case potential distance from 9 results from Navigator CO₂'s plume modeling for a 6" diameter pipeline and the maximum distance for which CO₂ concentration could reach 40,000ppm (4%) (Hazard Level 2) based on a modeled guillotine rupture of the pipeline system. For the model runs Navigator CO₂ used PHAST and Aloha modeling using various atmospheric conditions and determined maximum 40,000ppm dispersion distances ranging from 12 to 1,240 feet, with an average of the nine model runs of a 602-foot maximum dispersion distance.

The National Institute of Occupational Safety and Health (NIOSH) (reference NIOSH, "Immediately Dangerous to Life or Health (IDLH) Values," 1994) defines the Hazard Level 2 / 40,000 ppm concentration with a 30 minute exposure time as the atmospheric concentration of any toxic, corrosive, or asphyxiant substance that poses an immediate threat to life or that would cause irreversible or delayed adverse health effects or would interfere with an individual's ability to escape from a dangerous atmosphere. This exposure is recognized as presenting an increased risk level as impacted persons would need to evacuate from an IDLH environment via self-evacuation or assistance from first responders.

The affected IDLH area for any leak incident, were one to occur, would be limited to the maximum dispersion distance around the location of the actual leak incident in the direction of prevailing wind, not the full pipeline route.



Lincoln County, South Dakota

Heartland Greenway System

South Dakota HCA Impact
Spread 6A Chancellor Lateral 6"
Exhibit: 20 of 29



0 1,000 2,000
Feet
1 in = 2,000 feet

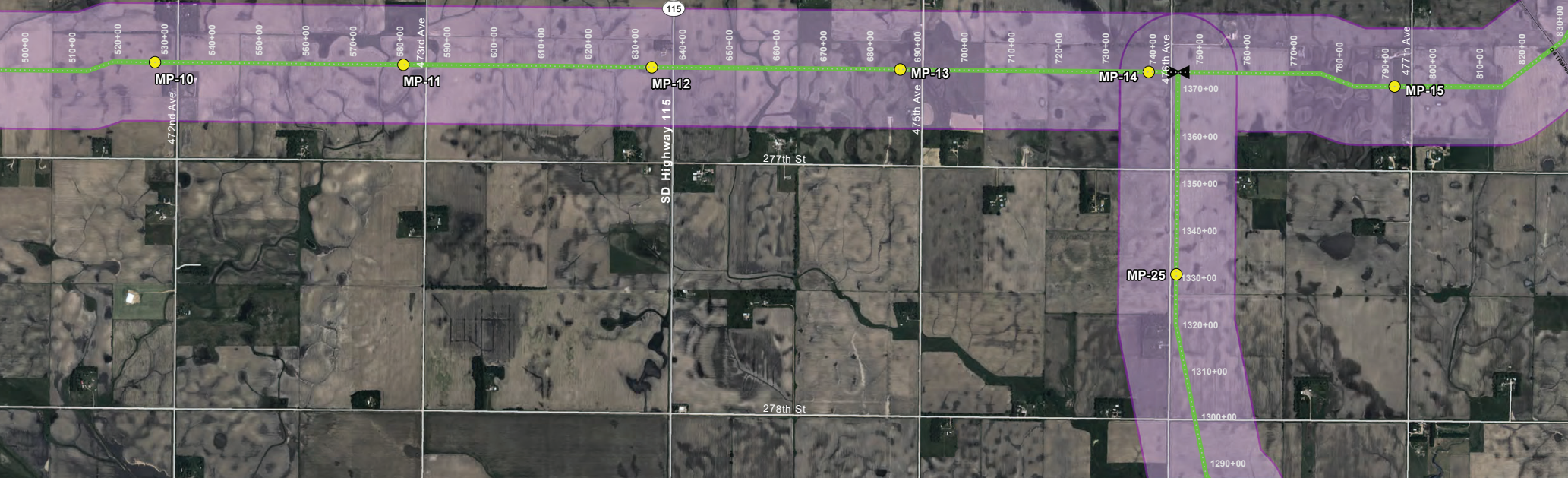


Map Disclaimer (6" diameter):

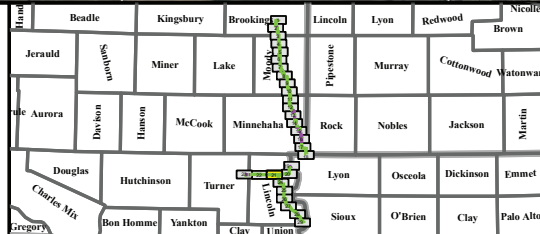
The corridor depicted on this map represents Navigator Heartland Greenway's "could affect" corridor for High Consequence Areas (HCAs) or inhabited structures on the Navigator Heartland Greenway system. This is based on the maximum dispersion distance of a potential 40,000ppm (4%) CO₂ concentration which could cause IDLH symptoms (described below) at a 30-minute duration exposure. The 1,240-foot buffer for the corridor is based on the worst-case potential distance from 9 results from Navigator CO₂'s plume modeling for a 6" diameter pipeline and the maximum distance for which CO₂ concentration could reach 40,000ppm (4%) (Hazard Level 2) based on a modeled guillotine rupture of the pipeline system. For the model runs Navigator CO₂ used PHAST and Aloha modeling using various atmospheric conditions and determined maximum 40,000ppm dispersion distances ranging from 12 to 1,240 feet, with an average of the nine model runs of a 602-foot maximum dispersion distance.

The National Institute of Occupational Safety and Health (NIOSH) (reference NIOSH, "Immediately Dangerous to Life or Health (IDLH) Values," 1994) defines the Hazard Level 2 / 40,000 ppm concentration with a 30 minute exposure time as the atmospheric concentration of any toxic, corrosive, or asphyxiant substance that poses an immediate threat to life or that would cause irreversible or delayed adverse health effects or would interfere with an individual's ability to escape from a dangerous atmosphere. This exposure is recognized as presenting an increased risk level as impacted persons would need to evacuate from an IDLH environment via self-evacuation or assistance from first responders.

The affected IDLH area for any leak incident, were one to occur, would be limited to the maximum dispersion distance around the location of the actual leak incident in the direction of prevailing wind, not the full pipeline route.

**Legend**

- Heartland Greenway
- Proposed Centerline
- HCA Buffers
 - IDLH Buffer (1,240')
- Stations
- Mile Posts
- Valve
- Population
 - National HPA
 - National OPA
 - States
 - Counties
 - Interstates/Highways
 - Roads
 - Railroads

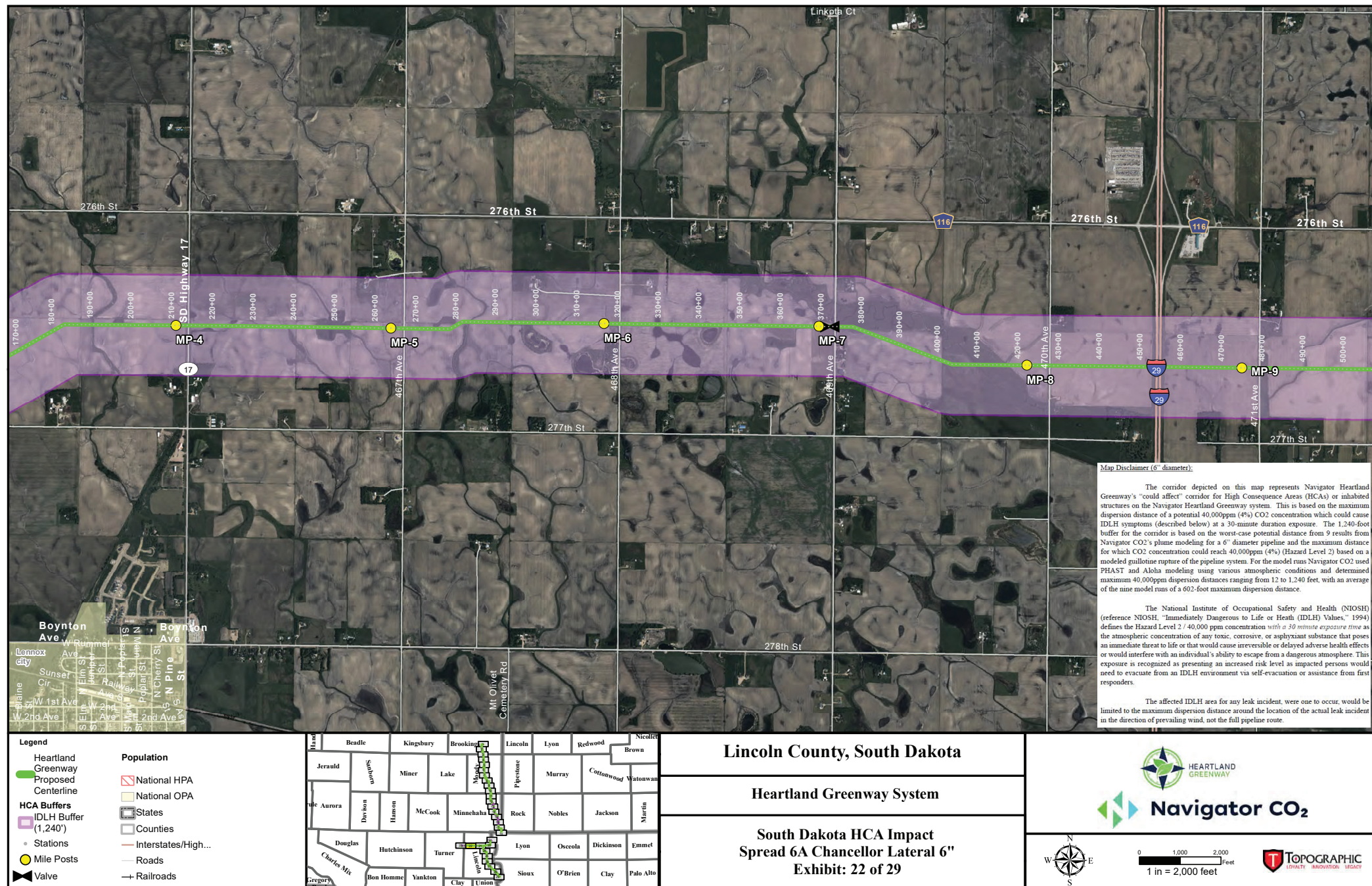
**Lincoln County, South Dakota****Heartland Greenway System**

**South Dakota HCA Impact
Spread 6A Chancellor Lateral 6"**
Exhibit: 21 of 29



0 1,000 2,000
Feet
1 in = 2,000 feet



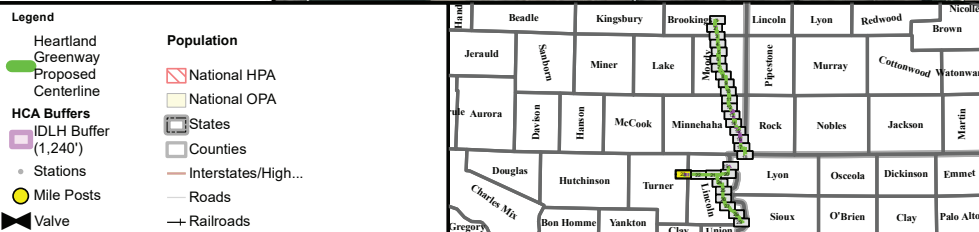
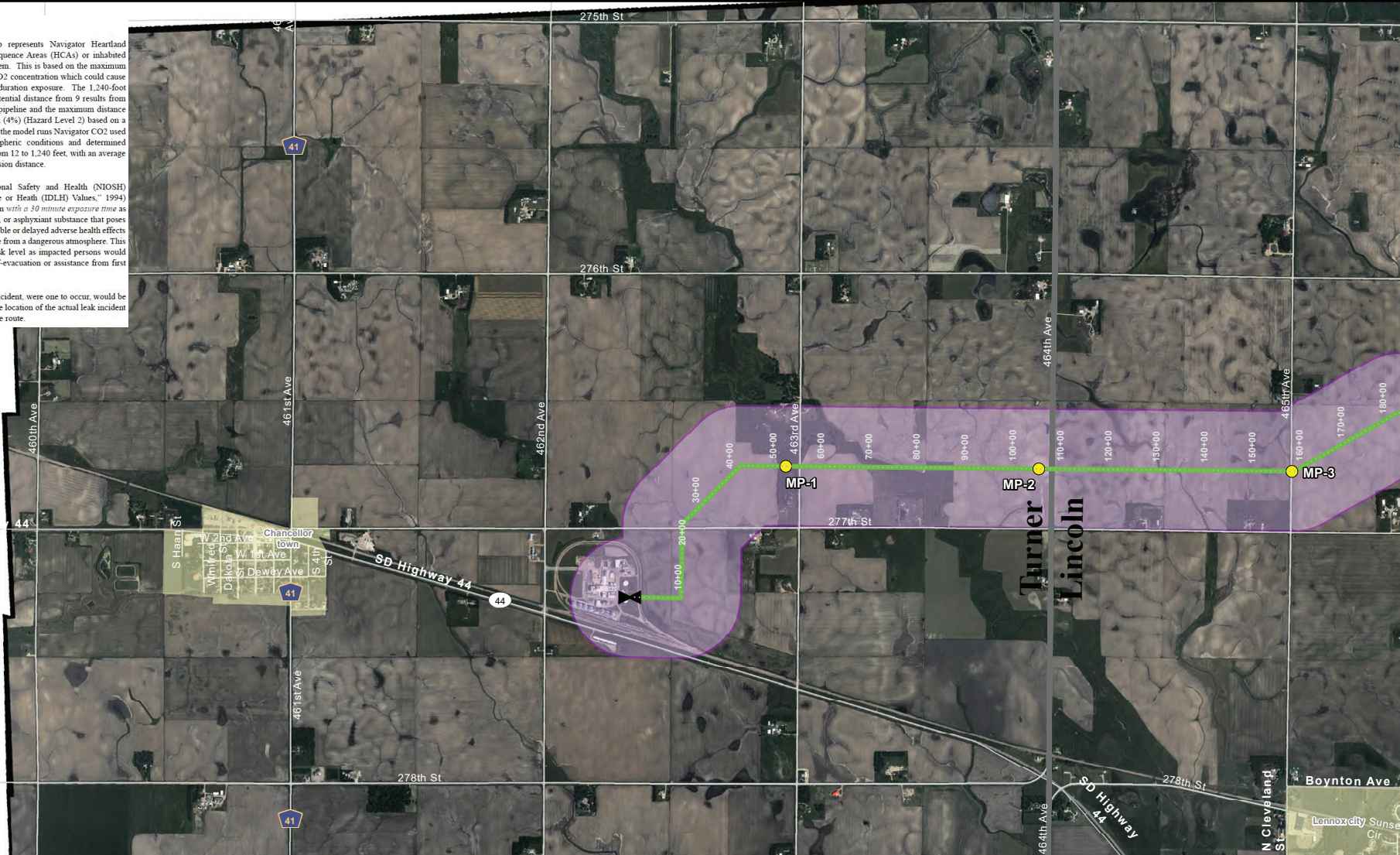


Map Disclaimer (6" diameter):

The corridor depicted on this map represents Navigator Heartland Greenway's "could affect" corridor for High Consequence Areas (HCAs) or inhabited structures on the Navigator Heartland Greenway system. This is based on the maximum dispersion distance of a potential 40,000ppm (4%) CO₂ concentration which could cause IDLH symptoms (described below) at a 30-minute duration exposure. The 1,240-foot buffer for the corridor is based on the worst-case potential distance from 9 results from Navigator CO₂'s plume modeling for a 6" diameter pipeline and the maximum distance for which CO₂ concentration could reach 40,000ppm (4%) (Hazard Level 2) based on a modeled guillotine rupture of the pipeline system. For the model runs Navigator CO₂ used PHAST and Aloha modeling using various atmospheric conditions and determined maximum 40,000ppm dispersion distances ranging from 12 to 1,240 feet, with an average of the nine model runs of a 602-foot maximum dispersion distance.

The National Institute of Occupational Safety and Health (NIOSH) (reference NIOSH, "Immediately Dangerous to Life or Health (IDLH) Values," 1994) defines the Hazard Level 2 / 40,000 ppm concentration with a 30 minute exposure time as the atmospheric concentration of any toxic, corrosive, or asphyxiant substance that poses an immediate threat to life or that would cause irreversible or delayed adverse health effects or would interfere with an individual's ability to escape from a dangerous atmosphere. This exposure is recognized as presenting an increased risk level as impacted persons would need to evacuate from an IDLH environment via self-evacuation or assistance from first responders.

The affected IDLH area for any leak incident, were one to occur, would be limited to the maximum dispersion distance around the location of the actual leak incident in the direction of prevailing wind, not the full pipeline route.

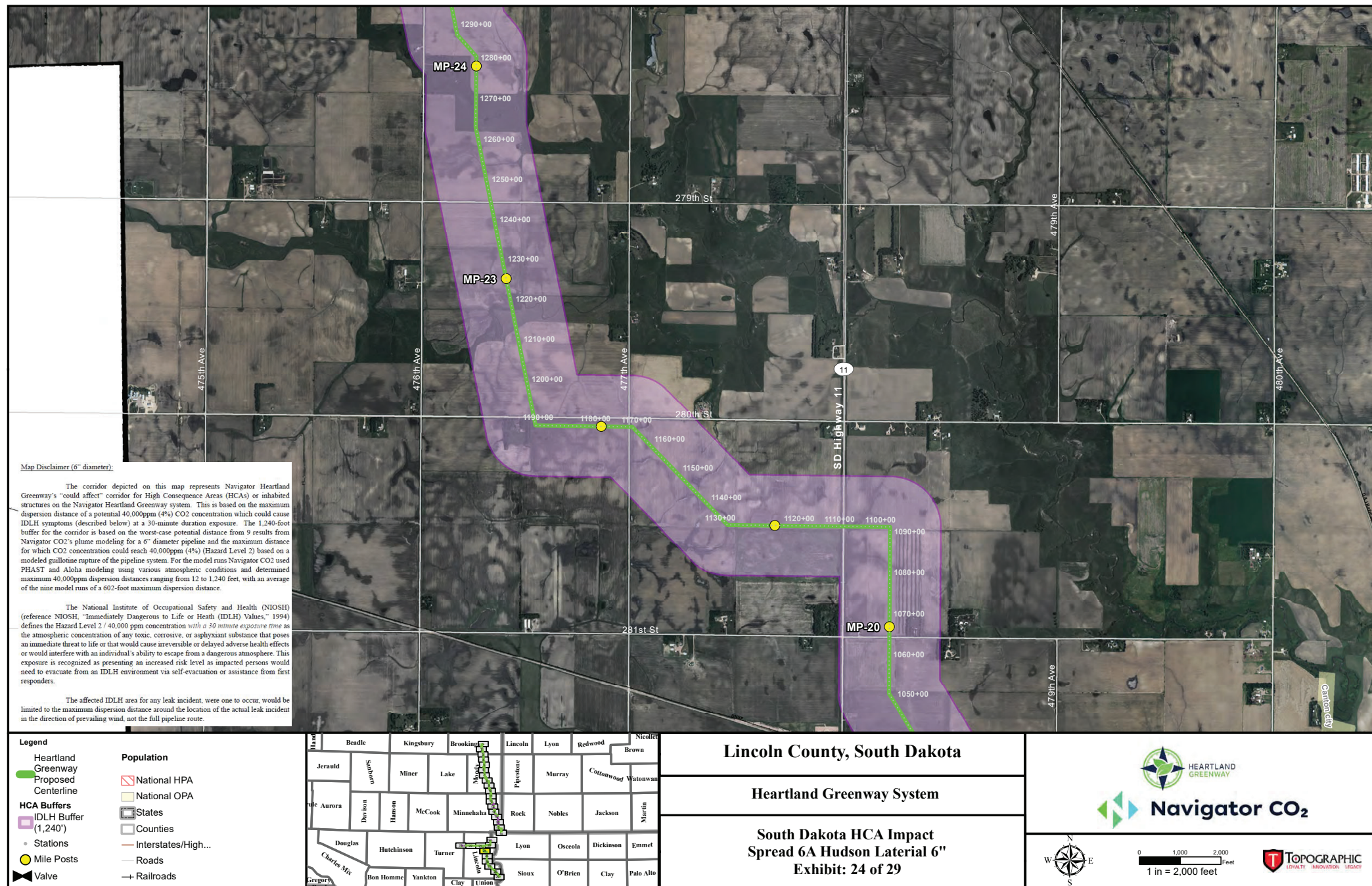
**Lincoln & Turner County, South Dakota****Heartland Greenway System**

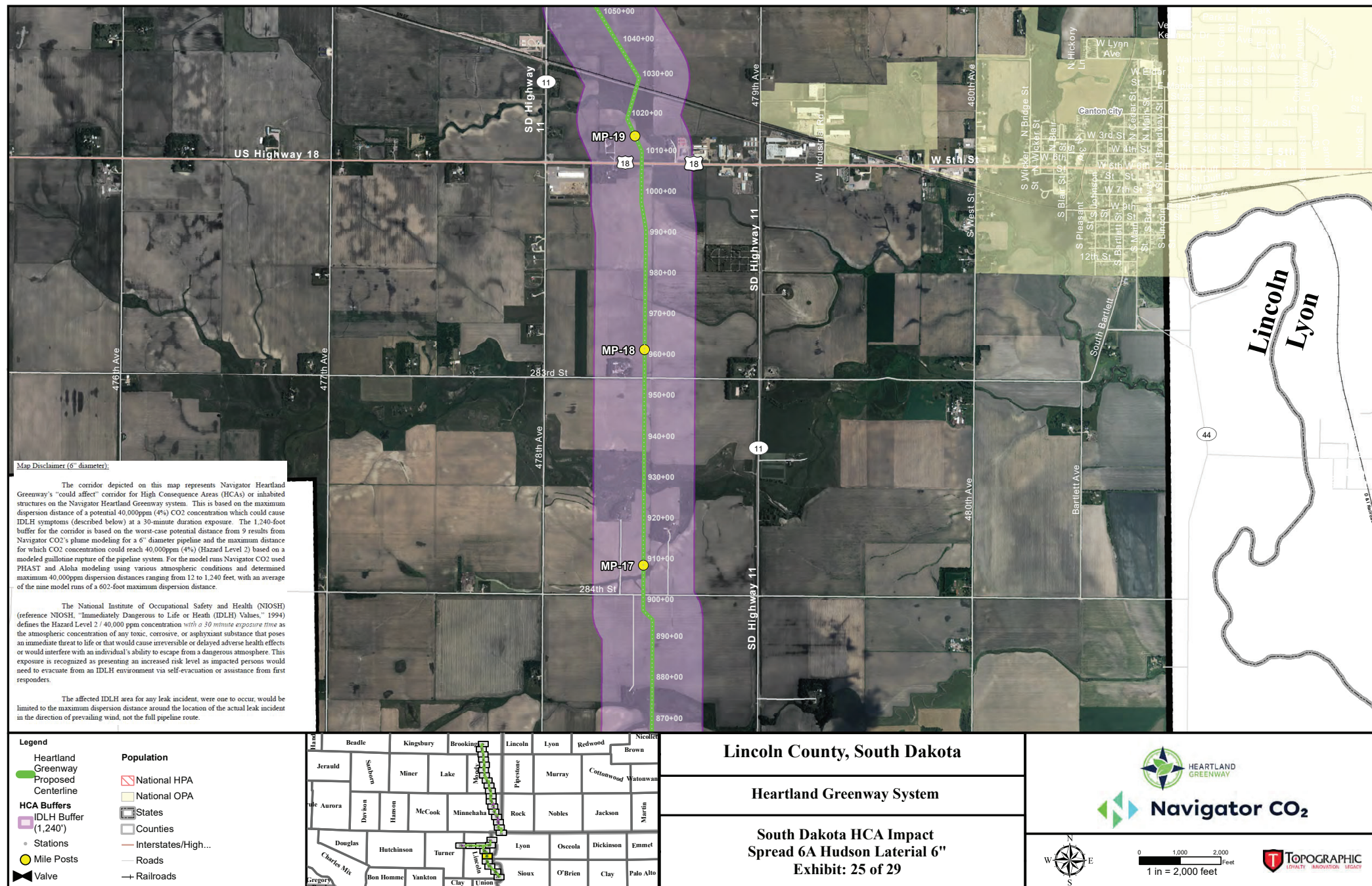
**South Dakota HCA Impact
Spread 6A Chancellor Lateral 6"**
Exhibit: 23 of 29



0 1,000 2,000 Feet
1 in = 2,000 feet

TOPOGRAPHIC
QUALITY. ACCURACY. TRUST.





Ly

Sid

44

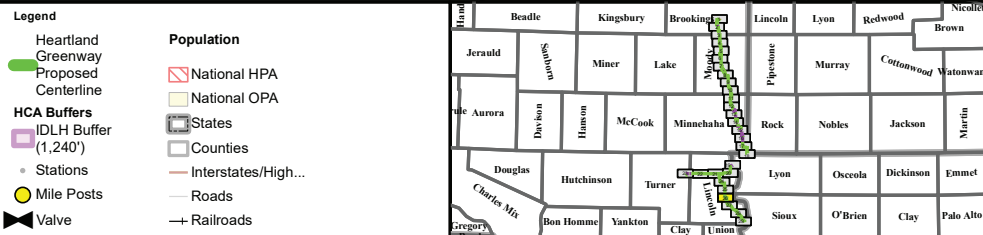
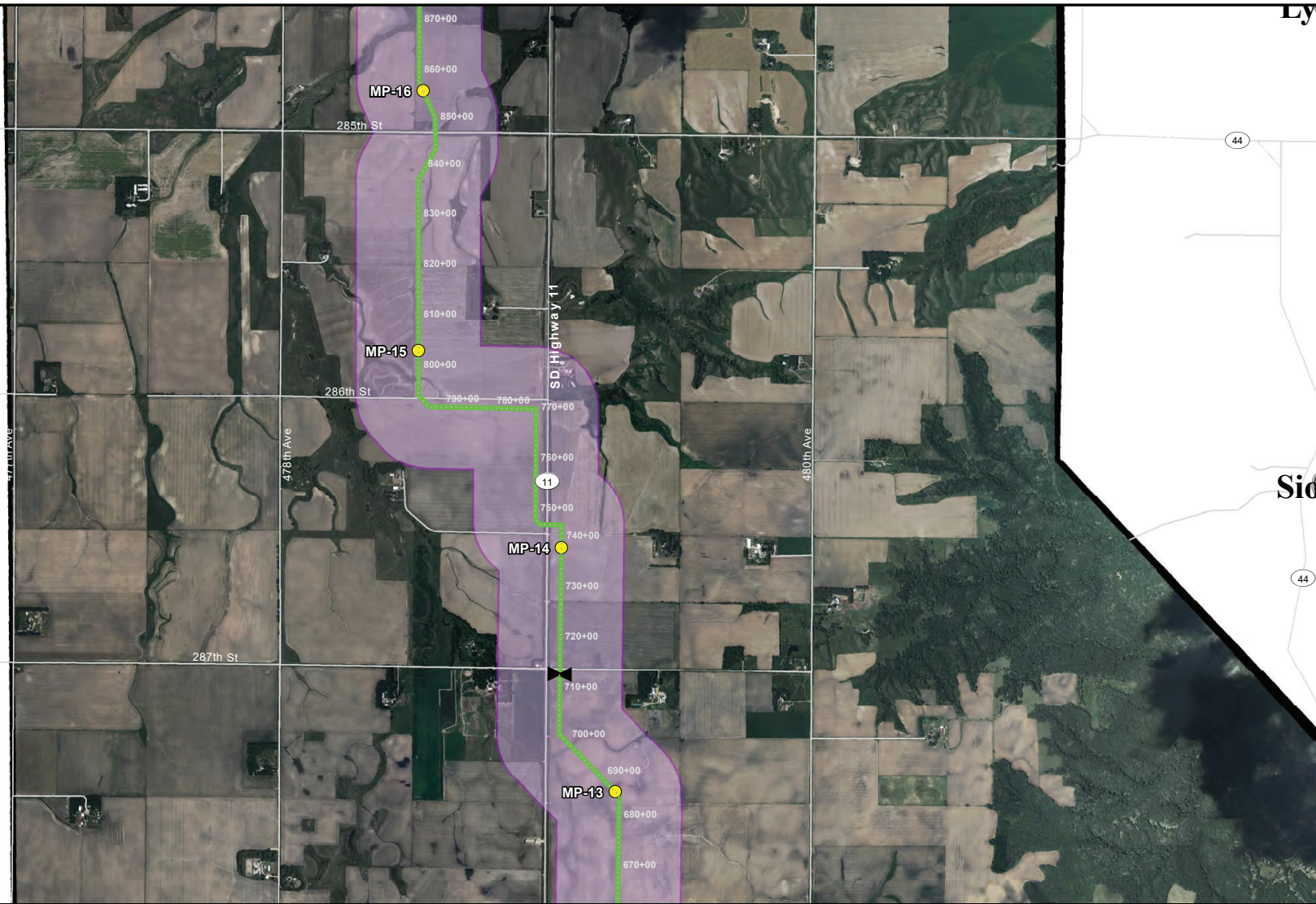
44

Map Disclaimer (6" diameter):

The corridor depicted on this map represents Navigator Heartland Greenway's "could affect" corridor for High Consequence Areas (HCAs) or inhabited structures on the Navigator Heartland Greenway system. This is based on the maximum dispersion distance of a potential 40,000ppm (4%) CO₂ concentration which could cause IDLH symptoms (described below) at a 30-minute duration exposure. The 1,240-foot buffer for the corridor is based on the worst-case potential distance from 9 results from Navigator CO₂'s plume modeling for a 6" diameter pipeline and the maximum distance for which CO₂ concentration could reach 40,000ppm (4%) (Hazard Level 2) based on a modeled guillotine rupture of the pipeline system. For the model runs Navigator CO₂ used PHAST and Aloha modeling using various atmospheric conditions and determined maximum 40,000ppm dispersion distances ranging from 12 to 1,240 feet, with an average of the nine model runs of a 602-foot maximum dispersion distance.

The National Institute of Occupational Safety and Health (NIOSH) (reference NIOSH, "Immediately Dangerous to Life or Health (IDLH) Values," 1994) defines the Hazard Level 2 / 40,000 ppm concentration with a 30 minute exposure time as the atmospheric concentration of any toxic, corrosive, or asphyxiant substance that poses an immediate threat to life or that would cause irreversible or delayed adverse health effects or would interfere with an individual's ability to escape from a dangerous atmosphere. This exposure is recognized as presenting an increased risk level as impacted persons would need to evacuate from an IDLH environment via self-evacuation or assistance from first responders.

The affected IDLH area for any leak incident, were one to occur, would be limited to the maximum dispersion distance around the location of the actual leak incident in the direction of prevailing wind, not the full pipeline route.



Lincoln County, South Dakota

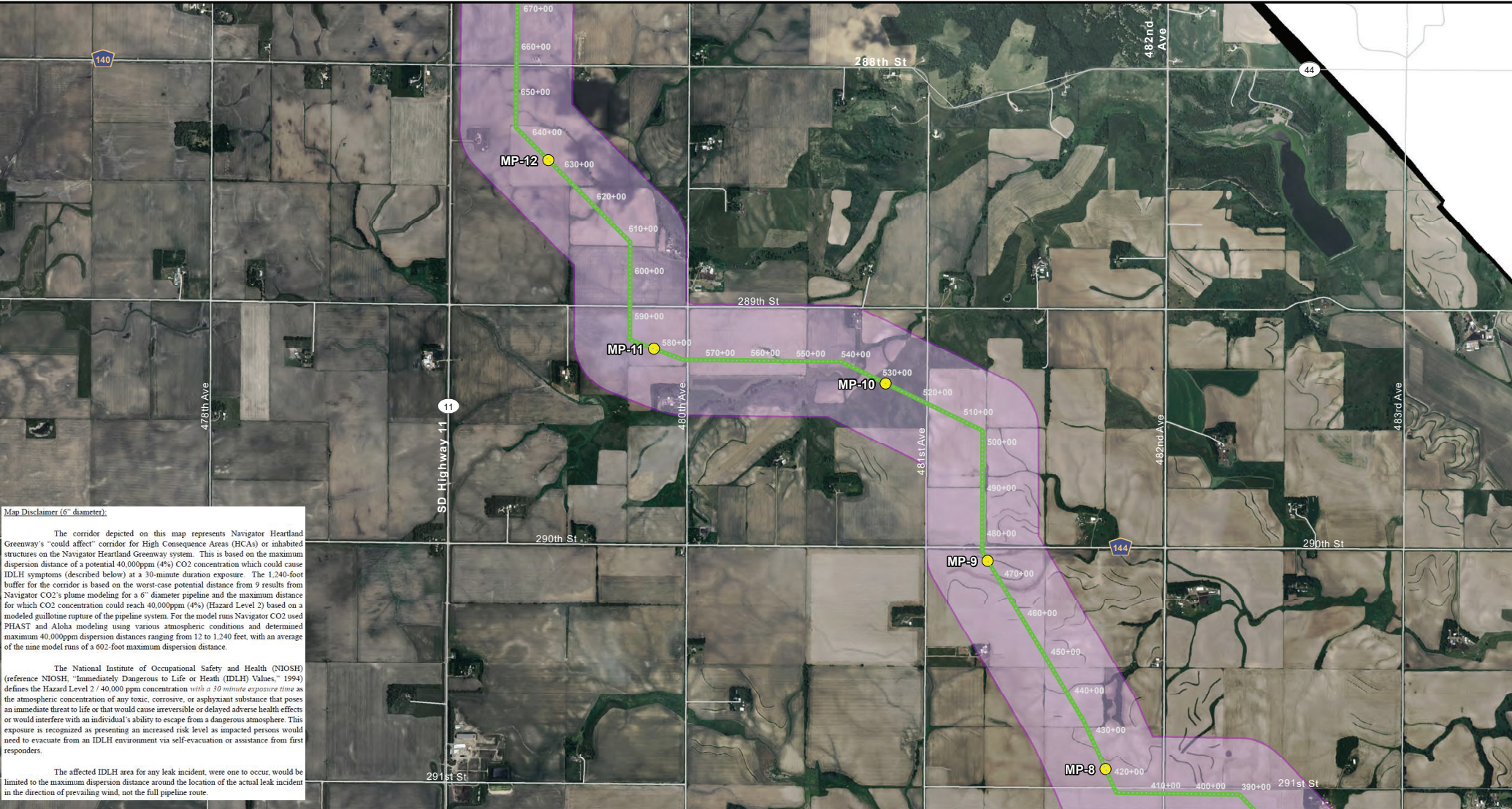
Heartland Greenway System

South Dakota HCA Impact
Spread 6A Hudson Lateral 6"
Exhibit: 26 of 29



0 1,000 2,000
Feet
1 in = 2,000 feet

TOPOGRAPHIC
LIABILITY ALTERNATIVE LEGACY



Map Disclaimer (6" diameter):

The corridor depicted on this map represents Navigator Heartland Greenway's "could affect" corridor for High Consequence Areas (HCAs) or inhabited structures on the Navigator Heartland Greenway system. This is based on the maximum dispersion distance of a potential 40,000ppm (4%) CO₂ concentration which could cause IDLH symptoms (described below) at a 30-minute duration exposure. The 1,240-foot buffer for the corridor is based on the worst-case potential distance from 9 results from Navigator CO₂'s plume modeling for a 6" diameter pipeline and the maximum distance for which CO₂ concentration could reach 40,000ppm (4%) (Hazard Level 2) based on a modeled guillotine rupture of the pipeline system. For the model runs Navigator CO₂ used PHAST and Aloha modeling using various atmospheric conditions and determined maximum 40,000ppm dispersion distances ranging from 12 to 1,240 feet, with an average of the nine model runs of a 602-foot maximum dispersion distance.

The National Institute of Occupational Safety and Health (NIOSH) (reference NIOSH, "Immediately Dangerous to Life or Health (IDLH) Values," 1994) defines the Hazard Level 2 / 40,000 ppm concentration with a 30 minute exposure time as the atmospheric concentration of any toxic, corrosive, or asphyxiant substance that poses an immediate threat to life or that would cause irreversible or delayed adverse health effects or would interfere with an individual's ability to escape from a dangerous atmosphere. This exposure is recognized as presenting an increased risk level as impacted persons would need to evacuate from an IDLH environment via self-evacuation or assistance from first responders.

The affected IDLH area for any leak incident, were one to occur, would be limited to the maximum dispersion distance around the location of the actual leak incident in the direction of prevailing wind, not the full pipeline route.

Legend

- Heartland Greenway
- Proposed Centerline
- HCA Buffers**
- IDLH Buffer (1,240')
- Stations
- Mile Posts
- Valve

Population

- National HPA
- National OPA
- States
- Counties
- Interstates/High...
- Roads
- Railroads

Lincoln County, South Dakota

Heartland Greenway System

South Dakota HCA Impact Spread 6A Hudson Lateral 6"

Exhibit: 27 of 29

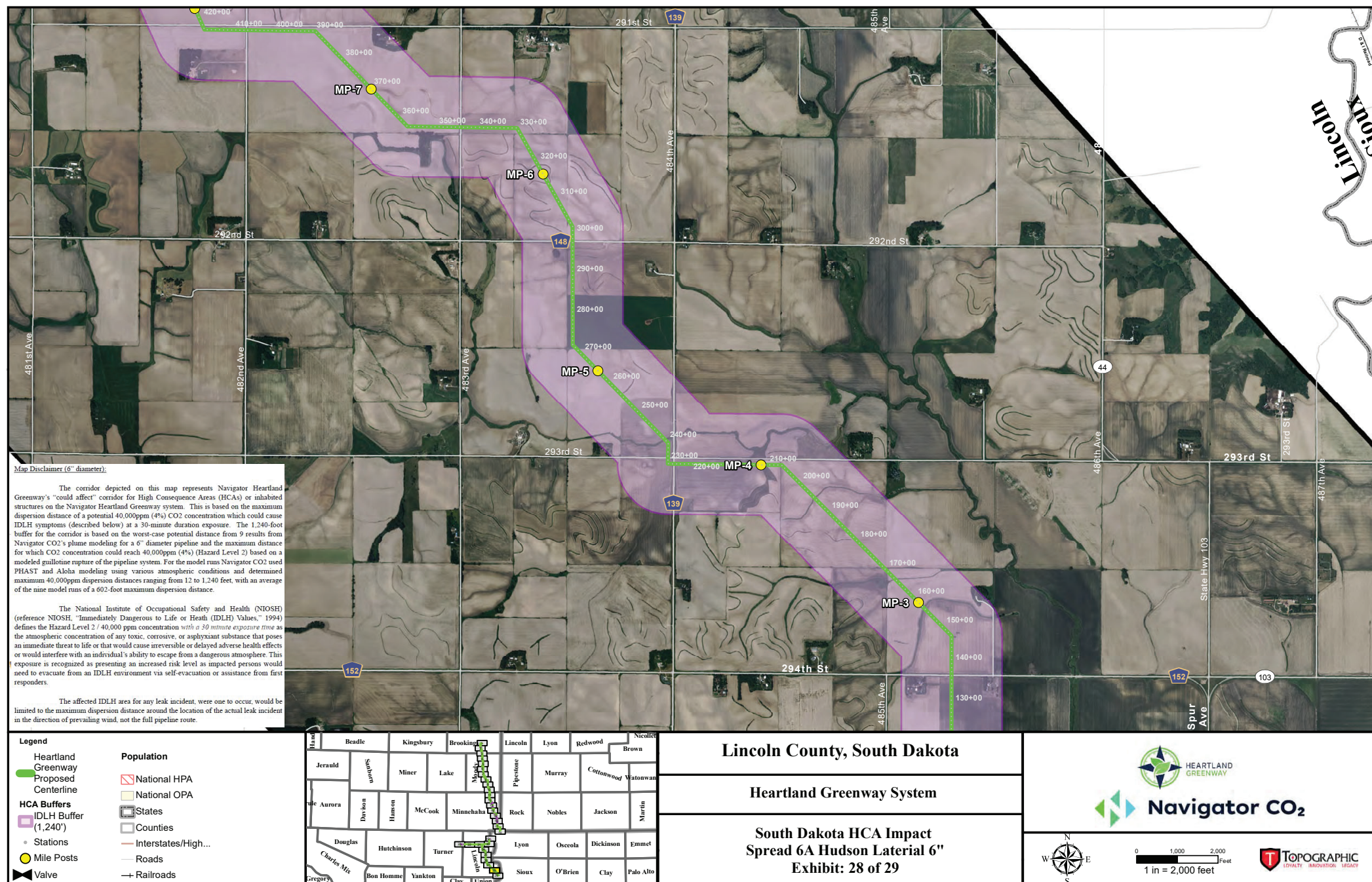
Navigator CO₂

0 1,000 2,000 Feet

1 in = 2,000 feet

TOPOGRAPHIC

QUALITY. ACCURACY. LEGACY.





Legend Heartland Greenway Proposed Centerline HCA Buffers IDLH Buffer (1,240') Stations Mile Posts Valve Population National HPA National OPA States Counties Interstates/Highways Roads Railroads		Lincoln County, South Dakota Heartland Greenway System South Dakota HCA Impact Spread 6A Hudson Lateral 6" Exhibit: 29 of 29	
--	--	---	--------------