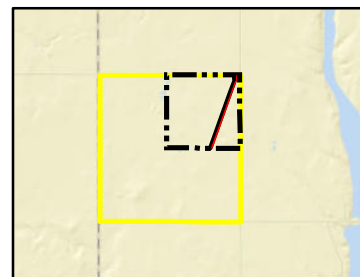


Attachment No. 1

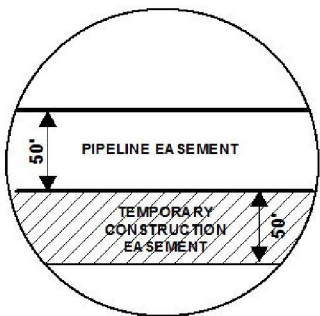
EXHIBIT "B"

PRELIMINARY ROUTE

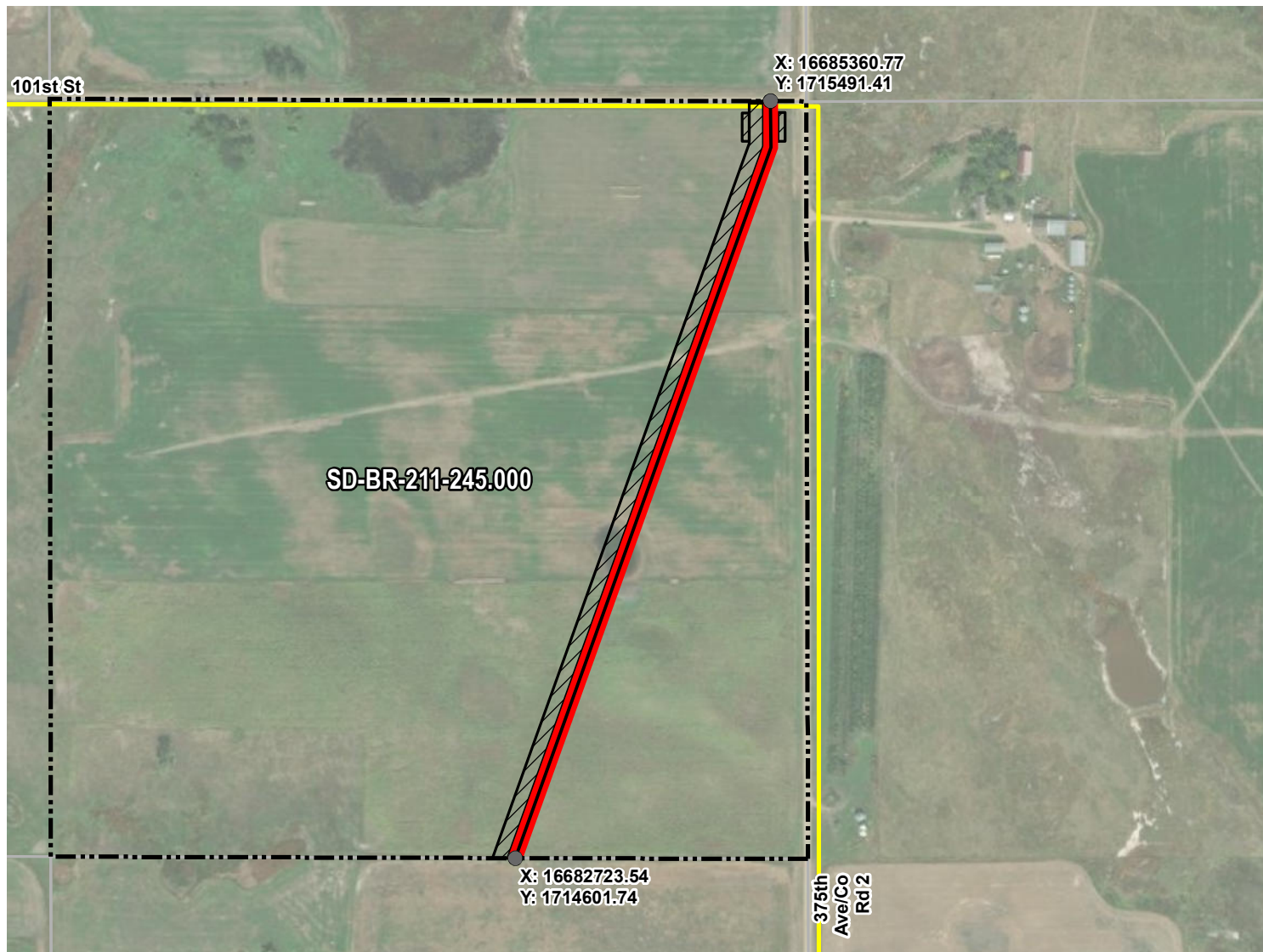
BROWN COUNTY, SOUTH DAKOTA



VICINITY MAP
N.T.S.



SEC. 07 T128N R65W



ROUTING LENGTH = 2792.315 FT +/-

IMPACTS: PIPELINE EASEMENT = 3.205 AC. +/- / TEMPORARY CONSTRUCTION EASEMENT = 3.321 AC. +/-

Legend

- PROPOSED ROUTE
- TEMPORARY CONSTRUCTION EASEMENT
- PARCEL BOUNDARY
- SECTION BOUNDARY
- ADJACENT PROPERTIES
- COUNTY BOUNDARY

NOTES:

1. THIS IS A PRELIMINARY DOCUMENT AND IS INTENDED TO DEPICT THE APPROXIMATE LOCATION OF A PROPOSED PIPELINE EASEMENT.
2. THIS DOCUMENT DOES NOT REPRESENT A LAND SURVEY AND IS NOT INTENDED TO DEPICT THE FINAL ALIGNMENT
3. COORDINATE SYSTEM: UTM ZONE 14 NORTH, NAD83, US SURVEY FEET

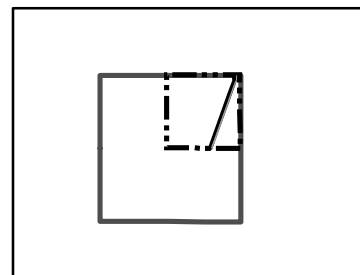
PRELIMINARY PIPELINE ROUTE

DRAWN BY: AC		SUMMIT CARBON SOLUTIONS MIDWEST CARBON EXPRESS SETH KLIPFEL TAX ID: 7938 TRACT NUMBER: SD-BR-211-245.000
CHECKED BY: JW		
MAP DATE: 12/2/2021		
SCALE: 1 inch = 568'		
REV NO.	DATE	DESCRIPTION
A	12/2/2021	INITIAL ISSUE
B	3/8/2022	REVISED WORKSPACE
DRAWING NO. C-MCE-ACQ-SD-BR-211-245.000		PROJECT NO. 450959
		SHEET NO. 01 of 01

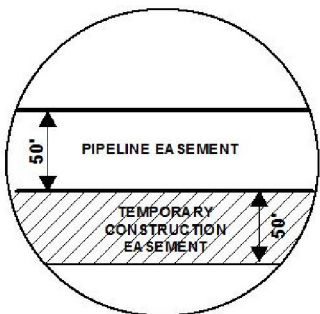
EXHIBIT "B"

PRELIMINARY ROUTE

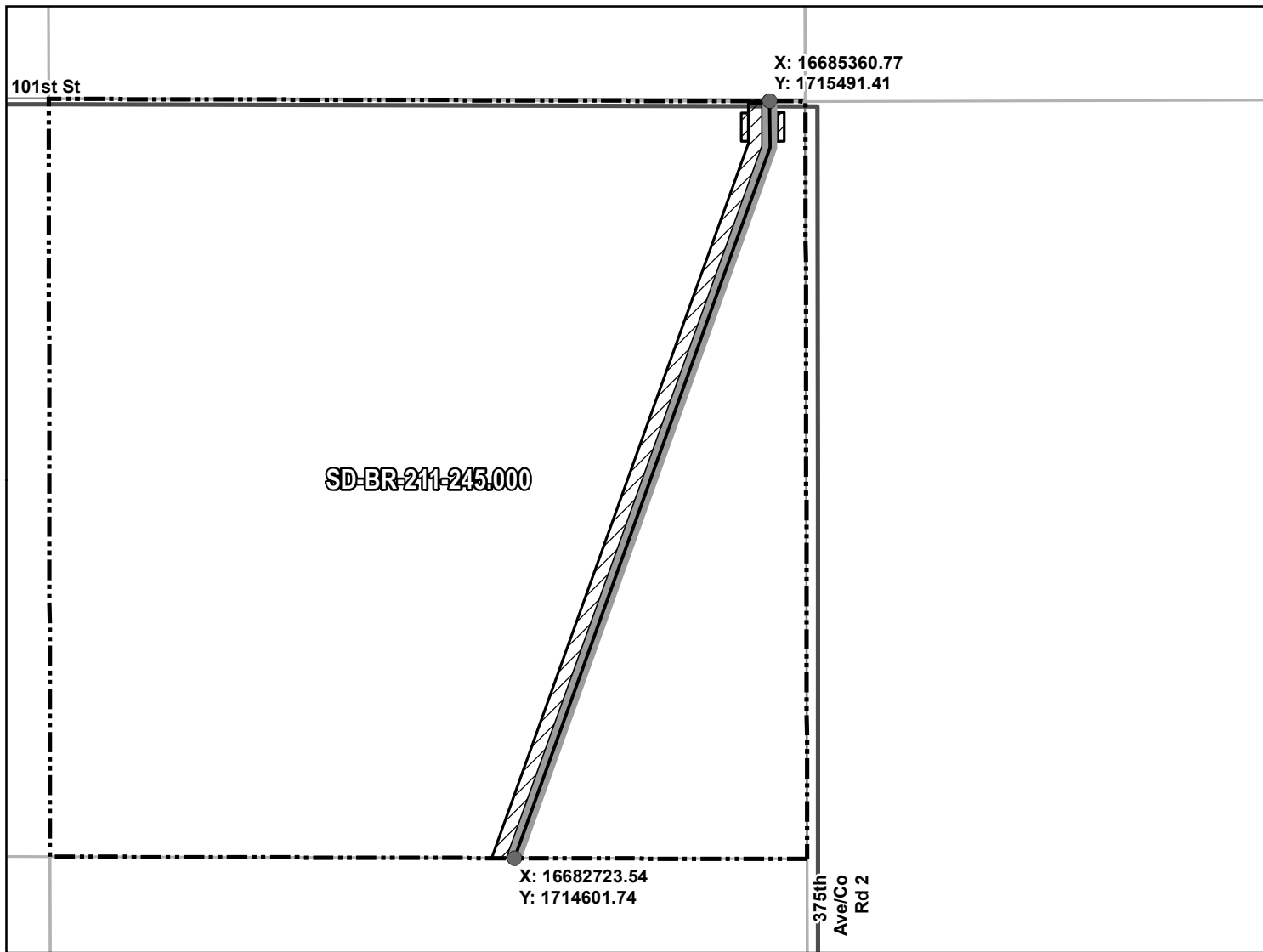
BROWN COUNTY, SOUTH DAKOTA



VICINITY MAP
N.T.S.



SEC. 07 T128N R65W



ROUTING LENGTH = 2792.315 FT +/-

IMPACTS: PIPELINE EASEMENT = 3.205 AC. +/- / TEMPORARY CONSTRUCTION EASEMENT = 3.321 AC. +/-

Legend

- PROPOSED ROUTE
- ROADS
- ▭ PARCEL BOUNDARY
- ▭ ADJACENT PROPERTIES
- ▭ PIPELINE EASEMENT
- ▨ TEMPORARY CONSTRUCTION EASEMENT
- ▭ SECTION BOUNDARY
- ▭ COUNTY BOUNDARY

NOTES:

1. THIS IS A PRELIMINARY DOCUMENT AND IS INTENDED TO DEPICT THE APPROXIMATE LOCATION OF A PROPOSED PIPELINE EASEMENT.
2. THIS DOCUMENT DOES NOT REPRESENT A LAND SURVEY AND IS NOT INTENDED TO DEPICT THE FINAL ALIGNMENT
3. COORDINATE SYSTEM: UTM ZONE 14 NORTH, NAD83, US SURVEY FEET

SIGNATURE: _____ DATE: _____



SUMMIT CARBON SOLUTIONS

PRELIMINARY PIPELINE ROUTE

DRAWN BY: AC

CHECKED BY: JW

MAP DATE: 12/2/2021

SCALE: 1 inch = 568'

REV NO. DATE

A 12/2/2021

B 3/8/2022

**SUMMIT CARBON SOLUTIONS
MIDWEST CARBON EXPRESS
SETH KLIPFEL**

TAX ID: 7938
TRACT NUMBER: SD-BR-211-245.000

DESCRIPTION
INITIAL ISSUE
REVISED WORKSPACE

DRAWING NO. BW-MCE-ACQ-SD-BR-211-245.000

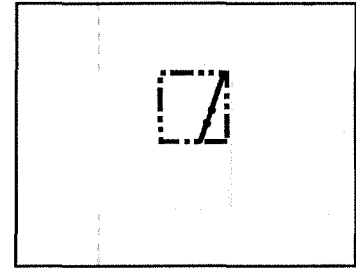
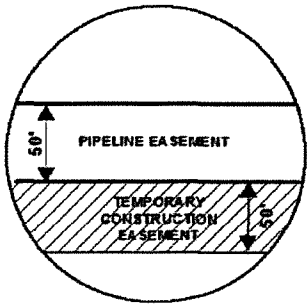
PROJECT NO. 450959

SHEET NO. 01 of 01

EXHIBIT "B"

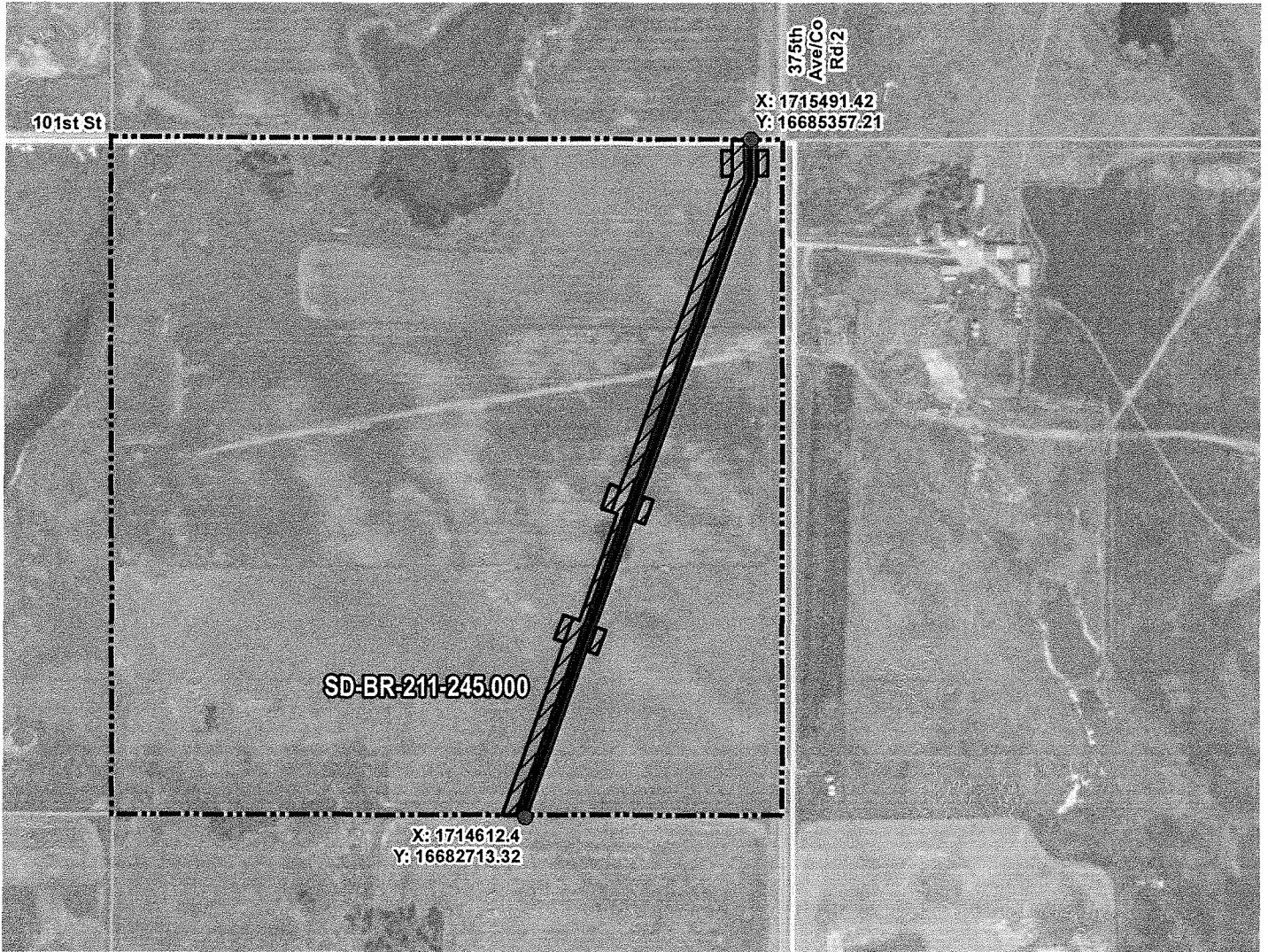
PRELIMINARY ROUTE

BROWN COUNTY, SOUTH DAKOTA



VICINITY MAP
N.T.S.

SEC. 07 T128N R65W



ROUTING LENGTH = 2790.544 FT +/-

IMPACTS: PIPELINE EASEMENT = 3.203 AC. +/- / TEMPORARY CONSTRUCTION EASEMENT = 3.5 AC. +/-

Legend

- PROPOSED ROUTE
- PARCEL BOUNDARY
- ADJACENT PROPERTIES
- PIPELINE EASEMENT
- TEMPORARY CONSTRUCTION EASEMENT
- SECTION BOUNDARY
- COUNTY BOUNDARY

NOTES:

1. THIS IS A PRELIMINARY DOCUMENT AND IS INTENDED TO DEPICT THE APPROXIMATE LOCATION OF A PROPOSED PIPELINE EASEMENT.
2. THIS DOCUMENT DOES NOT REPRESENT A LAND SURVEY AND IS NOT INTENDED TO DEPICT THE FINAL ALIGNMENT
3. COORDINATE SYSTEM: UTM ZONE 14 NORTH, NAD83, US SURVEY FEET

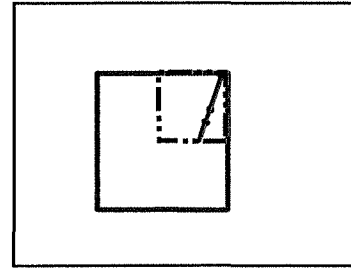
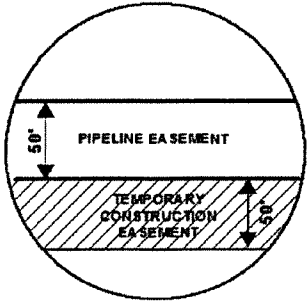
PRELIMINARY PIPELINE ROUTE		
DRAWN BY:	AC	SUMMIT CARBON SOLUTIONS MIDWEST CARBON EXPRESS SETH KLIPFEL TAX ID: 7938 TRACT NUMBER: SD-BR-211-245.000
CHECKED BY:	JW	
MAP DATE:	12/2/2021	
SCALE:	1 inch = 638'	
REV NO.	DATE	DESCRIPTION
D	12/1/2022	REVISED WORKSPACE
E	1/30/2023	REVISED WORKSPACE
DRAWING NO. C-MCE-ACQ-SD-BR-211-245.000		PROJECT NO. 450959 SHEET NO. 01 of 01



EXHIBIT "B"

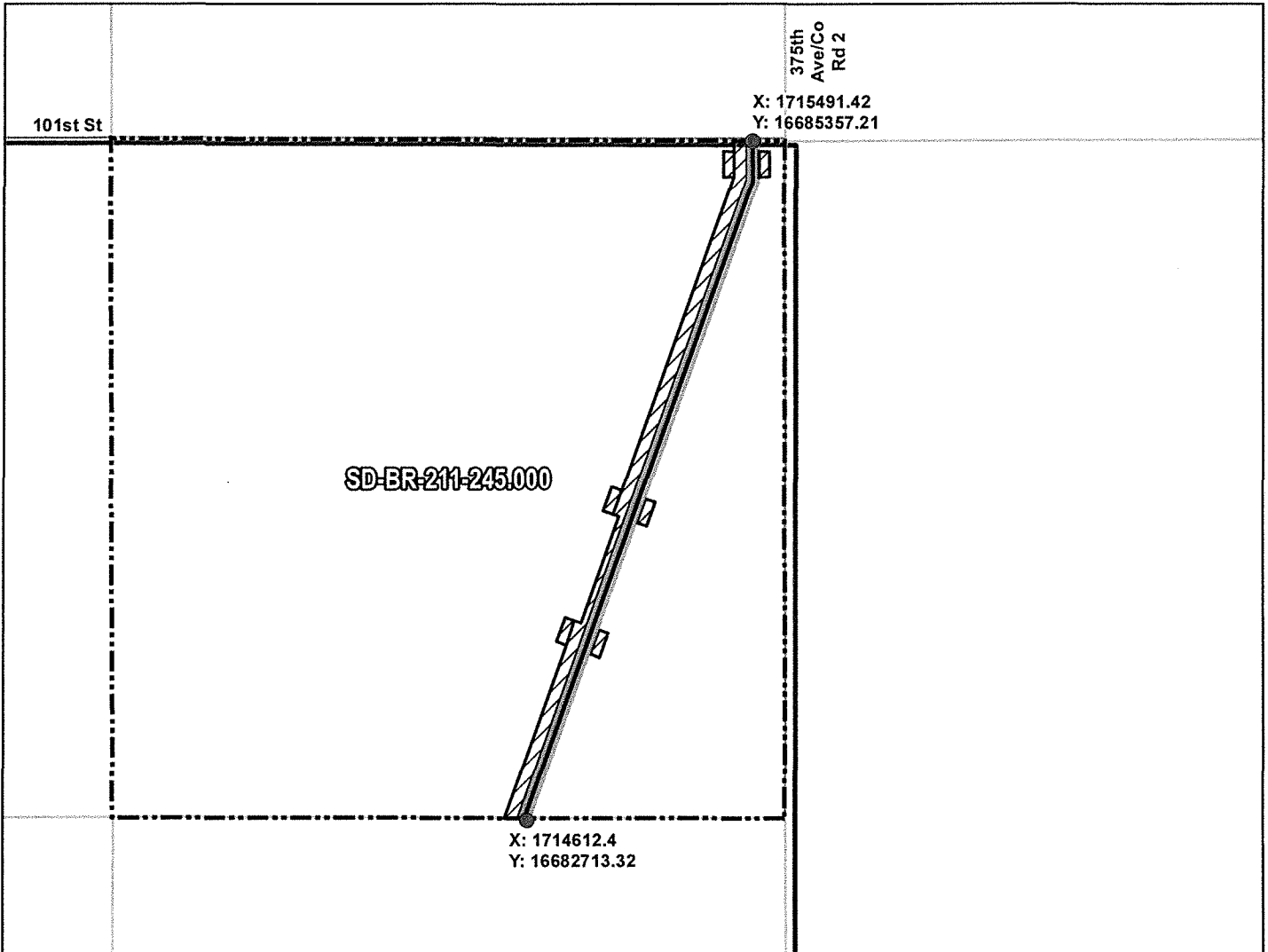
PRELIMINARY ROUTE

BROWN COUNTY, SOUTH DAKOTA



VICINITY MAP
N.T.S.

SEC. 07 T128N R65W



ROUTING LENGTH = 2790.544 FT +/-

IMPACTS: PIPELINE EASEMENT = 3.203 AC. +/- / TEMPORARY CONSTRUCTION EASEMENT = 3.5 AC. +/-

Legend

- PROPOSED ROUTE
- PIPELINE EASEMENT
- ROADS
- TEMPORARY CONSTRUCTION EASEMENT
- PARCEL BOUNDARY
- SECTION BOUNDARY
- ADJACENT PROPERTIES
- COUNTY BOUNDARY

NOTES:

1. THIS IS A PRELIMINARY DOCUMENT AND IS INTENDED TO DEPICT THE APPROXIMATE LOCATION OF A PROPOSED PIPELINE EASEMENT.
2. THIS DOCUMENT DOES NOT REPRESENT A LAND SURVEY AND IS NOT INTENDED TO DEPICT THE FINAL ALIGNMENT
3. COORDINATE SYSTEM: UTM ZONE 14 NORTH, NAD83, US SURVEY FEET

SIGNATURE: _____ DATE: _____



SUMMIT CARBON SOLUTIONS

PRELIMINARY PIPELINE ROUTE

DRAWN BY: AC

CHECKED BY: JW

MAP DATE: 12/2/2021

SCALE: 1 inch = 637'

**SUMMIT CARBON SOLUTIONS
MIDWEST CARBON EXPRESS
SETH KLIPFEL**

TAX ID: 7938
TRACT NUMBER: SD-BR-211-245.000

REV NO.	DATE	DESCRIPTION
D	12/1/2022	REVISED WORKSPACE
E	1/30/2023	REVISED WORKSPACE

DRAWING NO.
BW-MCE-ACQ-SD-BR-211-245.000

PROJECT NO. 450959

SHEET NO. 01 of 01