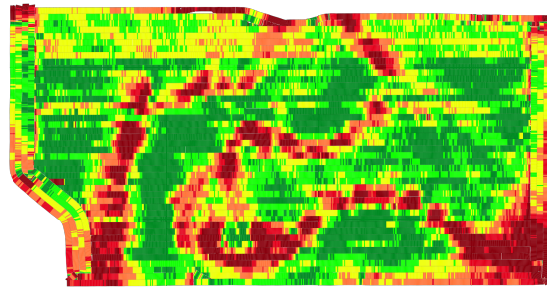


Attachment No. 17

Al's irrigator

Steve & Jeff Brown | Brown Brothers

Corn - Harvested 9/26/18 - 9/28/18



	> 220 bu/ac
	196 - 220 bu/ac
	172 - 196 bu/ac
	149 - 172 bu/ac
	125 - 149 bu/ac
	< 125 bu/ac

HYBRID	AVG YIELD (BU/AC)	MOISTURE	HARVESTED ACRES
● DKC47-27RIB	200	18.0%	31.2
● DKC47-48RIB	187	17.5%	43.1
Missing Hybrid / Variety	58.6	18.3%	0.2
Total/Avg	192	17.7%	74.5

COMBINE	OPERATOR	WET WEIGHT (LBS)	MOISTURE	ACRES
● John Deere S780	--	827,783	17.7%	74.5
Total/Avg		827,783	17.7%	74.5

74.5

HARVESTED ACRES

192

AVG YIELD (BU/AC)

17.7%

MOISTURE

14,307

DRY BUSHELS

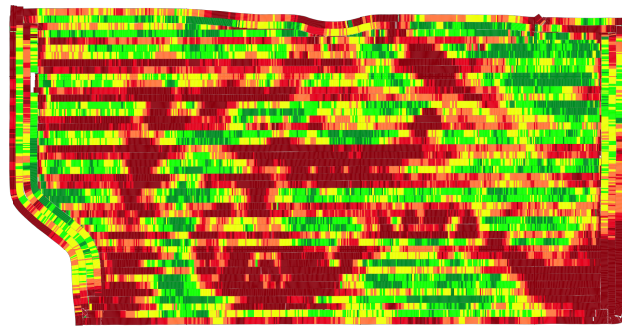
827,783

WET WEIGHT (LBS)

Al's irrigator

Steve & Jeff Brown | Brown Brothers

Corn - Harvested Oct 29, 2019



> 220 bu/ac
200 - 220 bu/ac
180 - 200 bu/ac
160 - 180 bu/ac
140 - 160 bu/ac
< 140 bu/ac

HYBRID	AVG YIELD (BU/AC)	MOISTURE	HARVESTED ACRES
DKC54-38RIB	186	19.5%	37.5
REA 5A023-RIB	148	19.6%	36.7
Total/Avg	167	19.5%	74.3

COMBINE	OPERATOR	WET WEIGHT (LBS)	MOISTURE	ACRES
John Deere S780	--	736,288	19.5%	74.3
Total/Avg		736,288	19.5%	74.3

74.3

HARVESTED ACRES

167

AVG YIELD (BU/AC)

19.5%

MOISTURE

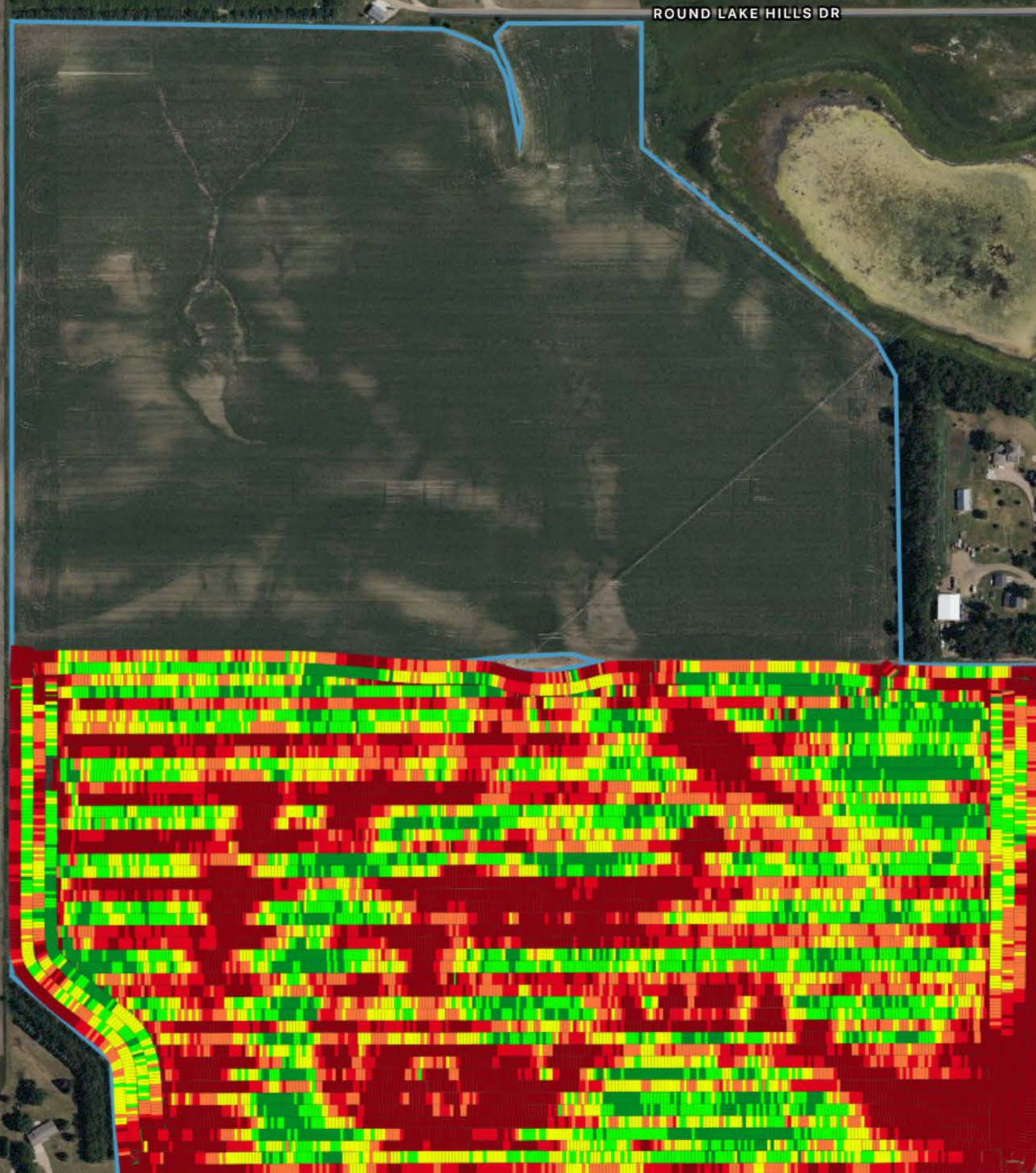
12,432







DRY BUSHELS

736,288

WET WEIGHT (LBS)

Al's irrigator
2023
Yield Map



	> 220 bu/ac
	200 - 220 bu/ac
	180 - 200 bu/ac
	160 - 180 bu/ac
	140 - 160 bu/ac
	< 140 bu/ac

239TH ST

239TH ST

ROUND LAKE HILLS DR

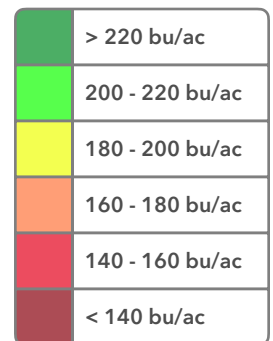
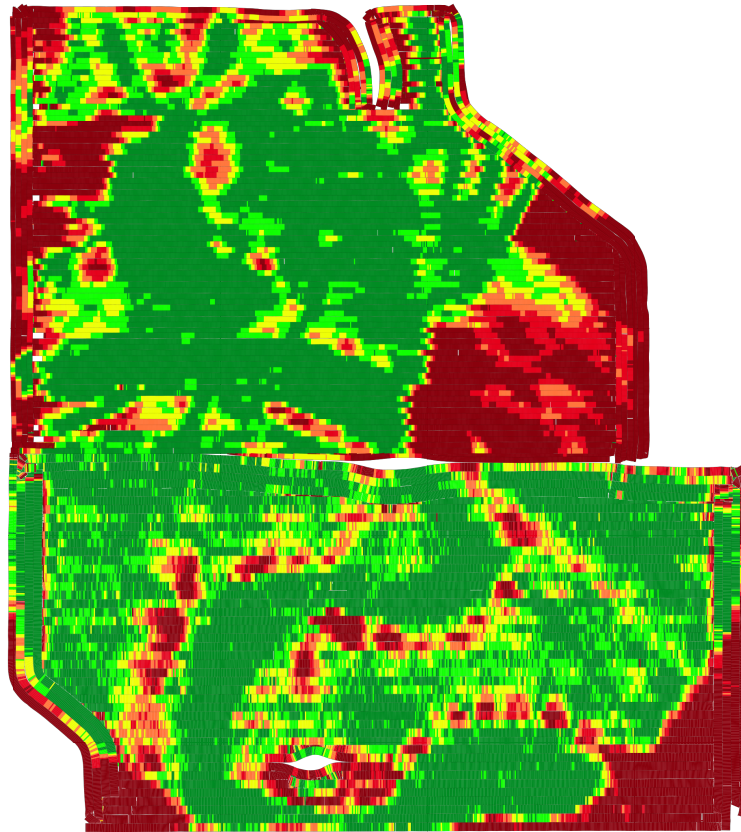
19



Al's irrigator

Steve & Jeff Brown | Brown Brothers

Corn - Harvested 10/1/20 - 10/9/20



HYBRID	AVG YIELD (BU/AC)	MOISTURE	HARVESTED ACRES
● P0421Q	198	15.8%	36.8
● DKC51-40RIB	192	13.2%	63.5
● DKC49-45RIB	191	13.7%	80.1
Missing Hybrid / Variety	206	15.3%	37.3
Total/Avg	196	14.3%	217.8

217.8

HARVESTED ACRES

196

AVG YIELD (BU/AC)

14.3%

MOISTURE

42,602

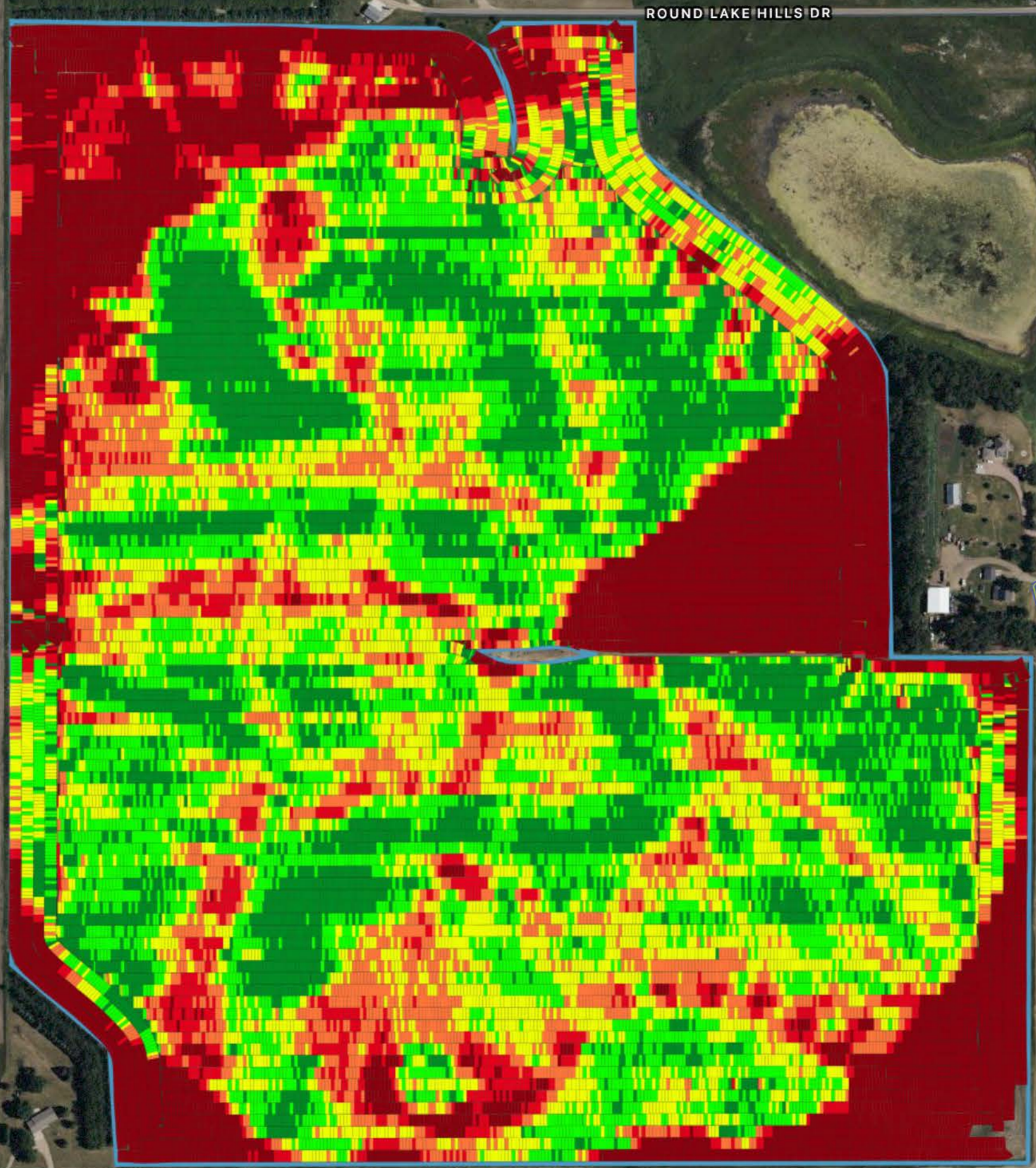
DRY BUSHELS

2,385,696

WET WEIGHT (LBS)

COMBINE	OPERATOR	WET WEIGHT (LBS)	MOISTURE	ACRES
● John Deere S780	--	843,189	15.5%	74
● Case IH 7240 (8228850)	--	1,542,507	13.5%	143.8
Total/Avg		2,385,696	14.3%	217.8

Al's irrigator
2023
Yield Map



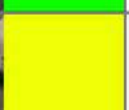
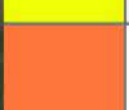
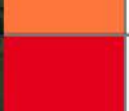



ROUND LAKE HILLS DR

19

239TH ST

239TH ST

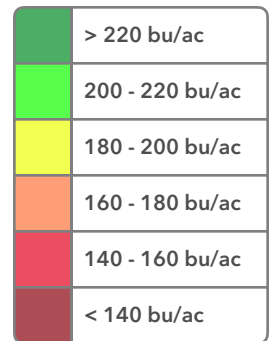
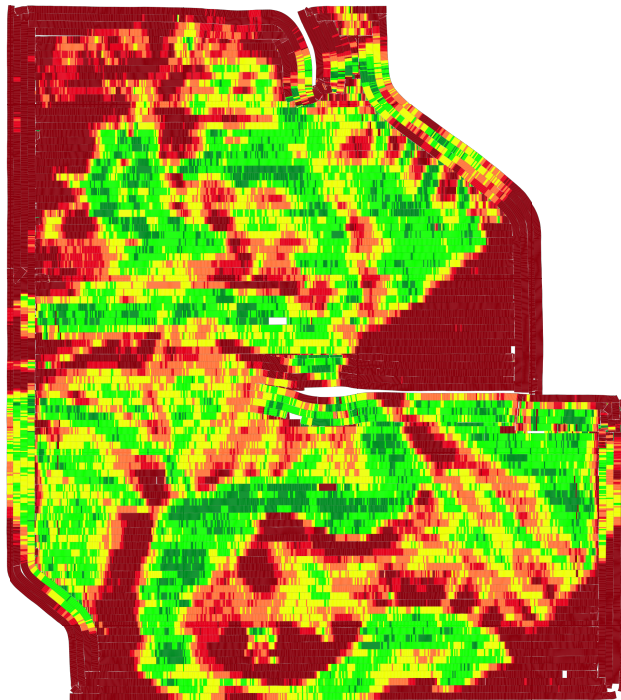
	> 220 bu/ac
	200 - 220 bu/ac
	180 - 200 bu/ac
	160 - 180 bu/ac
	140 - 160 bu/ac
	< 140 bu/ac



Al's irrigator

Steve & Jeff Brown | Brown Brothers

Corn - Harvested Oct 18, 2022



HYBRID	AVG YIELD (BU/AC)	MOISTURE	HARVESTED ACRES
● P0075Q	159	15.4%	145.6
Missing Hybrid / Variety	102	15.3%	0.3
Total/Avg	159	15.4%	145.9

COMBINE	OPERATOR	WET WEIGHT (LBS)	MOISTURE	ACRES
● John Deere S780	--	1,302,902	15.4%	145.9
Total/Avg		1,302,902	15.4%	145.9

145.9

HARVESTED ACRES

159

AVG YIELD (BU/AC)

15.4%

MOISTURE

23,161

DRY BUSHELS

1,302,902

WET WEIGHT (LBS)