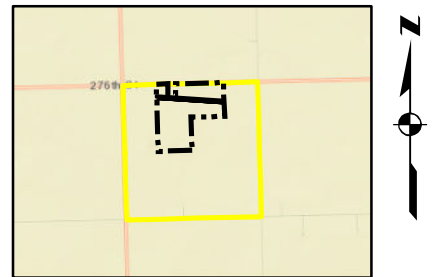


Attachment No. 1

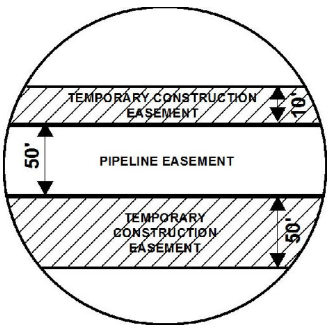
EXHIBIT "B"

PRELIMINARY ROUTE

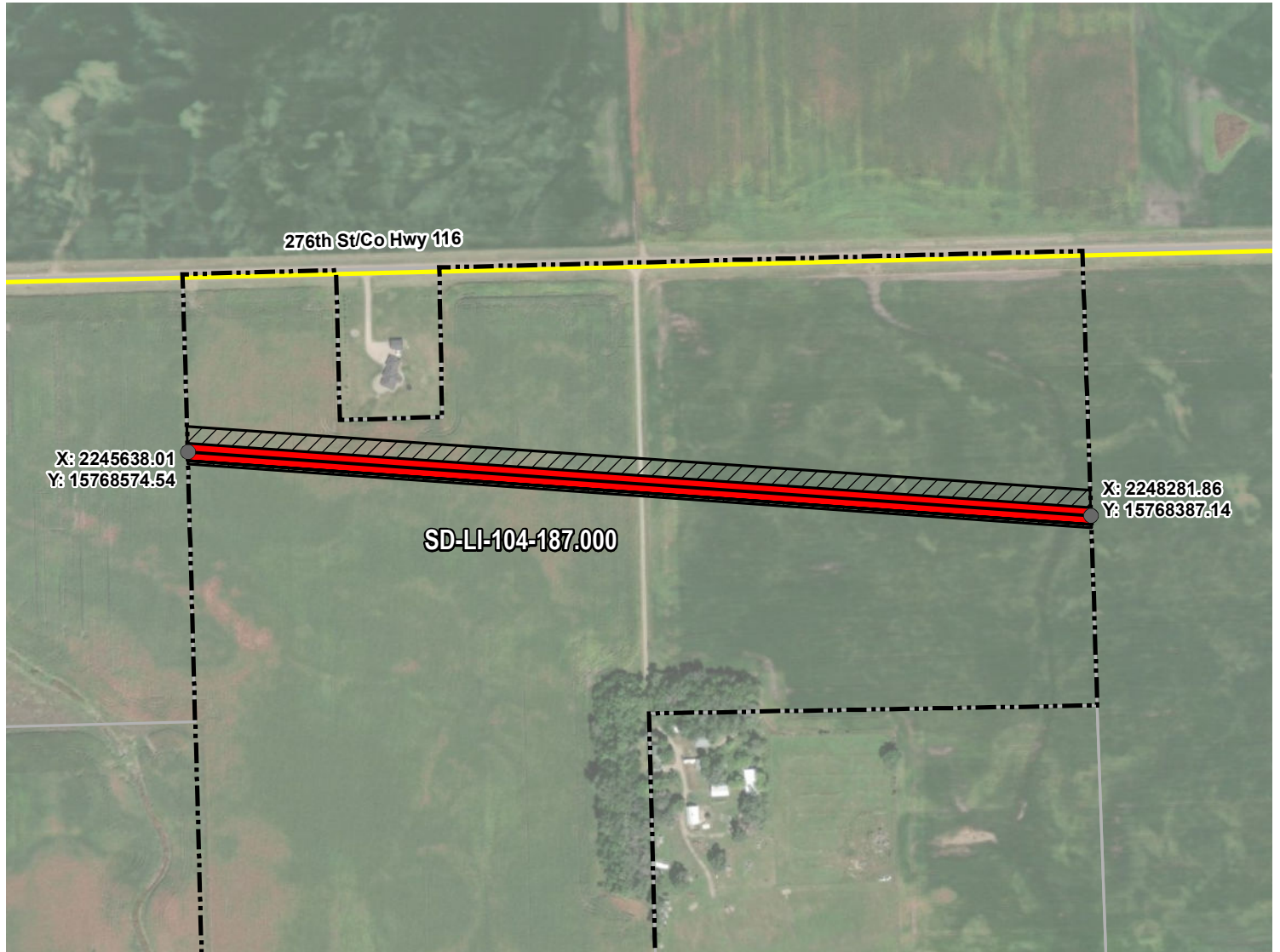
LINCOLN COUNTY, SOUTH DAKOTA



VICINITY MAP
N.T.S.



SEC. 23 T099N R50W



ROUTING LENGTH = 2650.476 FT +/-
IMPACTS: PIPELINE EASEMENT = 3.042 AC. +/- / TEMPORARY CONSTRUCTION EASEMENT = 3.651 AC. +/-

PROPOSED ROUTE	PIPELINE EASEMENT
PARCEL BOUNDARY	TEMPORARY CONSTRUCTION EASEMENT
ADJACENT PROPERTIES	SECTION BOUNDARY
	COUNTY BOUNDARY

NOTES:

1. THIS IS A PRELIMINARY DOCUMENT AND IS INTENDED TO DEPICT THE APPROXIMATE LOCATION OF A PROPOSED PIPELINE EASEMENT.
2. THIS DOCUMENT DOES NOT REPRESENT A LAND SURVEY AND IS NOT INTENDED TO DEPICT THE FINAL ALIGNMENT
3. COORDINATE SYSTEM: UTM ZONE 14 NORTH, NAD83, US SURVEY FEET

PRELIMINARY PIPELINE ROUTE

DRAWN BY:	AC	SUMMIT CARBON SOLUTIONS MIDWEST CARBON EXPRESS BELL-MURPHY FAMILY TRUST TAX ID: 099.50.23.1010 TRACT NUMBER: SD-LI-104-187.000
CHECKED BY:	JW	
MAP DATE:	1/28/2022	
SCALE:	1 inch = 478'	
REV NO.	DATE	DESCRIPTION
B	3/6/2022	REVISED ROUTE
C	9/13/2022	REVISED WORKSPACE
DRAWING NO. C-MCE-ACQ-SD-LI-104-187.000	PROJECT NO. 450959	SHEET NO. 01 of 01

