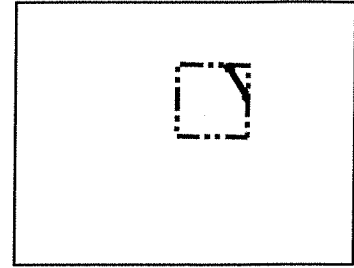
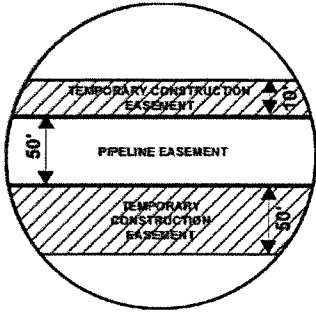


Attachment No. 1

EXHIBIT "B"

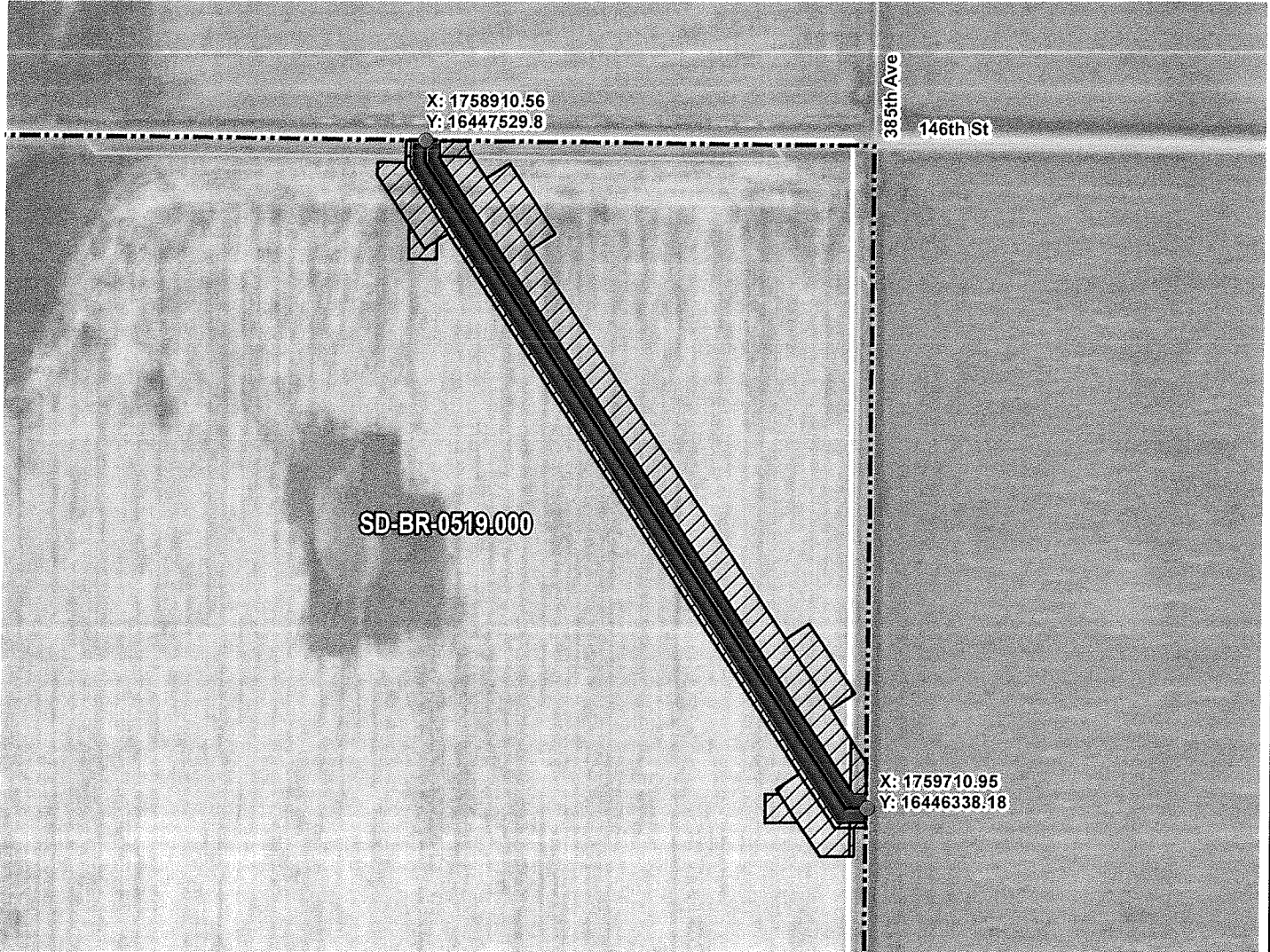
PRELIMINARY ROUTE

BROWN COUNTY, SOUTH DAKOTA



VICINITY MAP
N.T.S.

SEC. 28 T121N R64W



ROUTING LENGTH = 1457.113 FT +/-

IMPACTS: PIPELINE EASEMENT = 1.673 AC. +/- / TEMPORARY CONSTRUCTION EASEMENT = 2.745 AC. +/-

Legend

- PROPOSED ROUTE
- ▨ PIPELINE EASEMENT
- ▤ PARCEL BOUNDARY
- ▧ TEMPORARY CONSTRUCTION EASEMENT
- ADJACENT PROPERTIES
- ▭ SECTION BOUNDARY
- ▭ COUNTY BOUNDARY

NOTES:

1. THIS IS A PRELIMINARY DOCUMENT AND IS INTENDED TO DEPICT THE APPROXIMATE LOCATION OF A PROPOSED PIPELINE EASEMENT.
2. THIS DOCUMENT DOES NOT REPRESENT A LAND SURVEY AND IS NOT INTENDED TO DEPICT THE FINAL ALIGNMENT
3. COORDINATE SYSTEM: UTM ZONE 14 NORTH, NAD83, US SURVEY FEET



SUMMIT CARBON SOLUTIONS

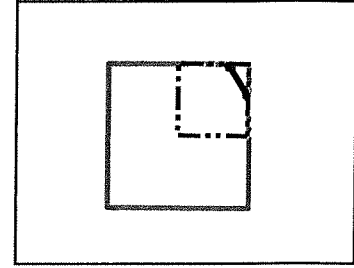
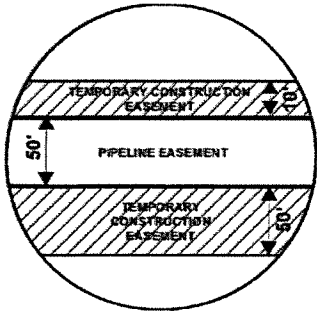
PRELIMINARY PIPELINE ROUTE

DRAWN BY:	AC	SUMMIT CARBON SOLUTIONS MIDWEST CARBON EXPRESS J&S NEIGER LIMITED PARTNERSHIP TAX ID: 6588 TRACT NUMBER: SD-BR-0519.000
CHECKED BY:	JW	
MAP DATE:	12/8/2021	
SCALE:	1 inch = 292'	
REV NO.	DATE	DESCRIPTION
F	11/4/2022	REVISED WORKSPACE
G	3/9/2023	REVISED SECTION BOUNDARY
DRAWING NO. C-MCE-ACQ-SD-BR-0519.000		PROJECT NO. 450959 SHEET NO. 01 of 01

EXHIBIT "B"

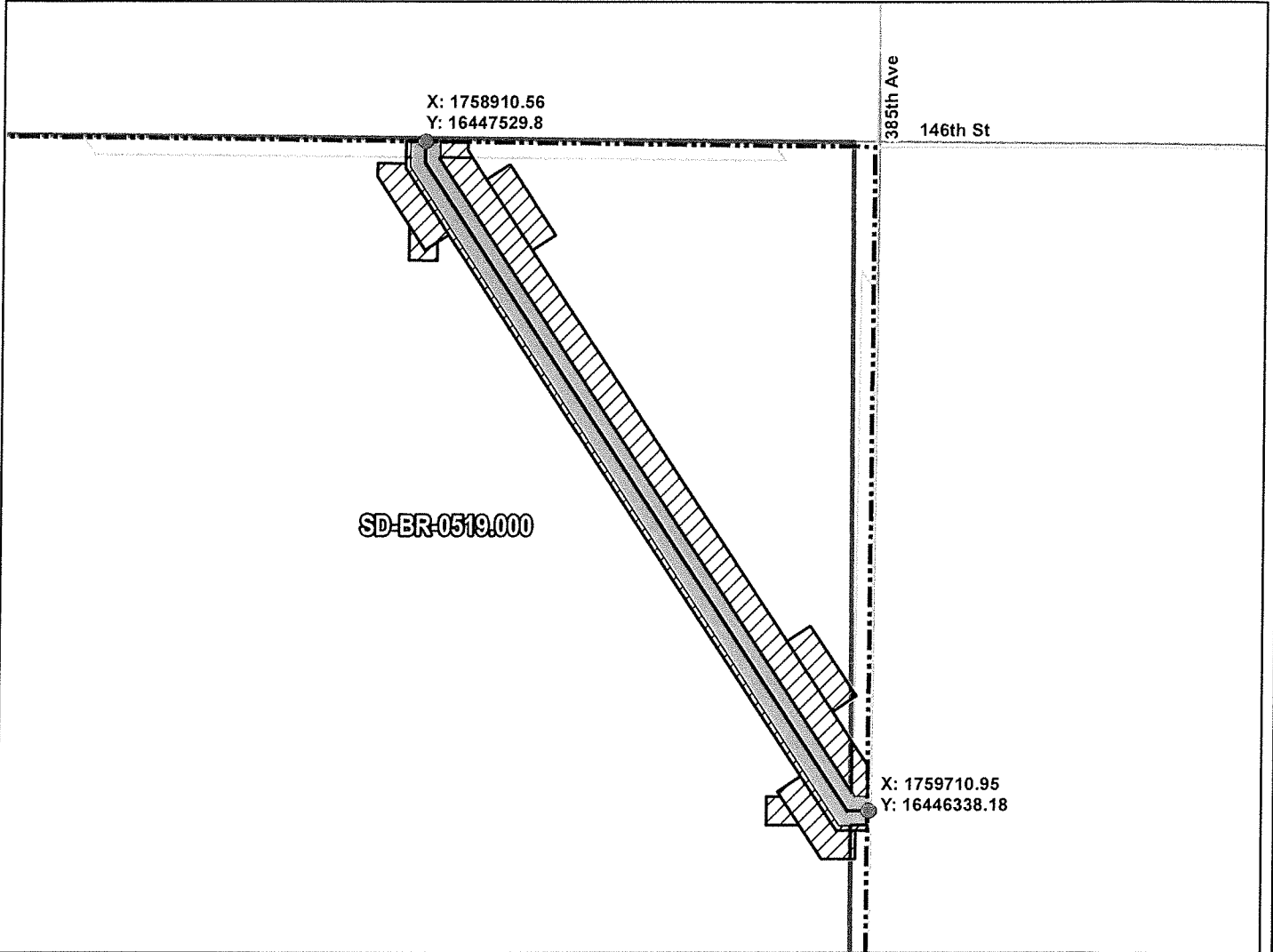
PRELIMINARY ROUTE

BROWN COUNTY, SOUTH DAKOTA



VICINITY MAP
N.T.S.

SEC. 28 T121N R64W



ROUTING LENGTH = 1457.113 FT +/-

IMPACTS: PIPELINE EASEMENT = 1.673 AC. +/- / TEMPORARY CONSTRUCTION EASEMENT = 2.745 AC. +/-

Legend

- PROPOSED ROUTE
- ROADS
- ▤ PARCEL BOUNDARY
- ▭ ADJACENT PROPERTIES
- ▨ PIPELINE EASEMENT
- ▧ TEMPORARY CONSTRUCTION EASEMENT
- ▭ SECTION BOUNDARY
- ▭ COUNTY BOUNDARY

NOTES:

1. THIS IS A PRELIMINARY DOCUMENT AND IS INTENDED TO DEPICT THE APPROXIMATE LOCATION OF A PROPOSED PIPELINE EASEMENT.
2. THIS DOCUMENT DOES NOT REPRESENT A LAND SURVEY AND IS NOT INTENDED TO DEPICT THE FINAL ALIGNMENT
3. COORDINATE SYSTEM: UTM ZONE 14 NORTH, NAD83, US SURVEY FEET

SIGNATURE: _____ DATE: _____



**SUMMIT CARBON
SOLUTIONS**

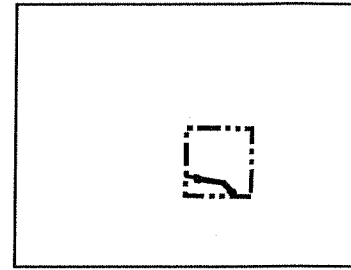
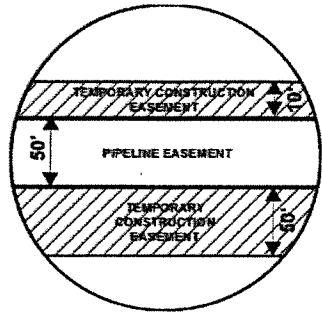
PRELIMINARY PIPELINE ROUTE

DRAWN BY:	AC	SUMMIT CARBON SOLUTIONS MIDWEST CARBON EXPRESS J&S NEIGER LIMITED PARTNERSHIP TAX ID: 6588 TRACT NUMBER: SD-BR-0519.000
CHECKED BY:	JW	
MAP DATE:	12/8/2021	
SCALE:	1 inch = 292'	
REV NO.	DATE	DESCRIPTION
F	11/4/2022	REVISED WORKSPACE
G	3/9/2023	REVISED SECTION BOUNDARY
DRAWING NO. BW-MCE-ACQ-SD-BR-0519.000		PROJECT NO. 450959 SHEET NO. 01 of 01

EXHIBIT "B"

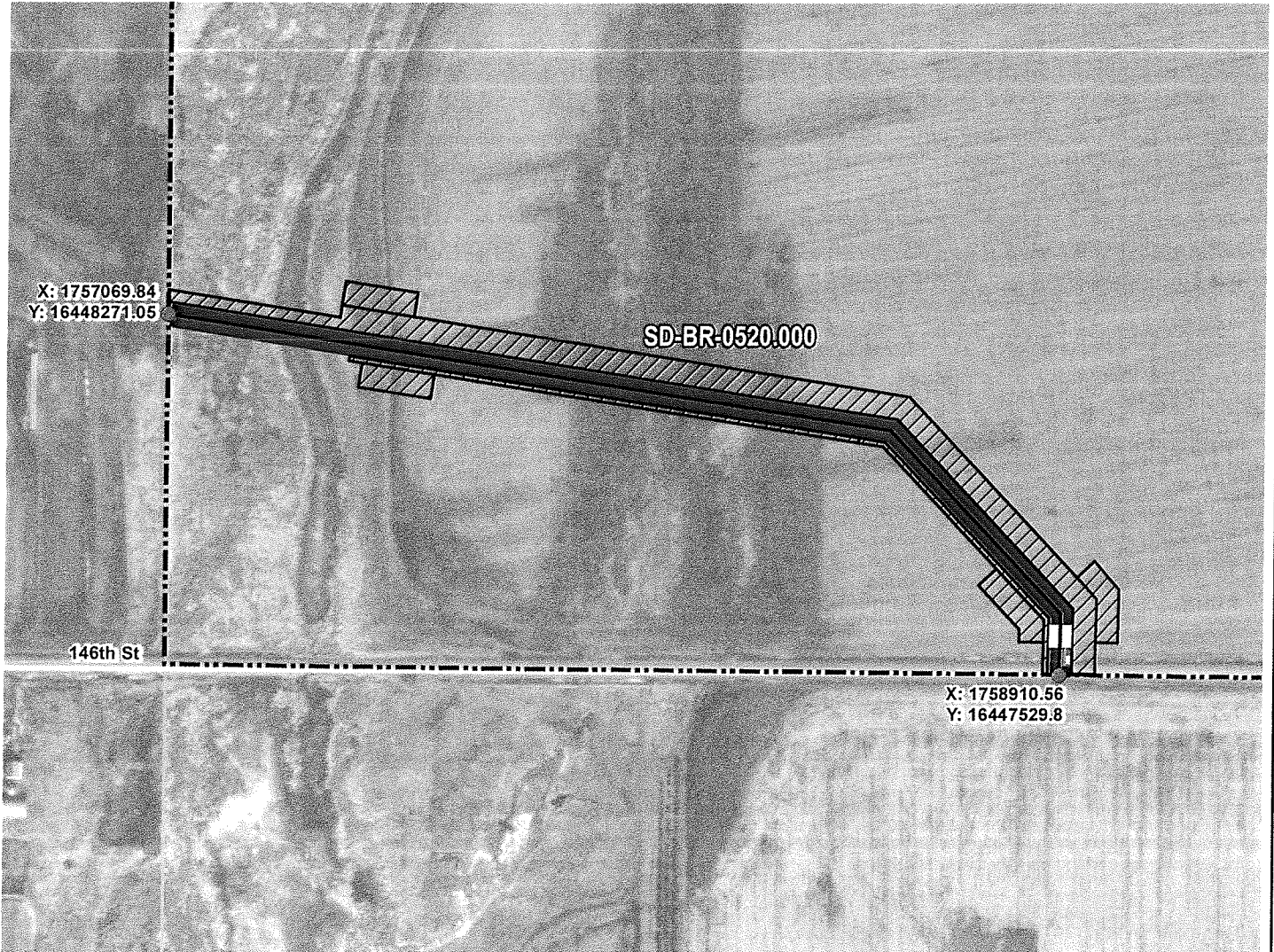
PRELIMINARY ROUTE

BROWN COUNTY, SOUTH DAKOTA



VICINITY MAP
N.T.S.

SEC. 21 T121N R64W



ROUTING LENGTH = 2151.626 FT +/- / ACCESS EASEMENT LENGTH = 35.486 FT +/-
 IMPACTS: PIPELINE EASEMENT = 2.453 AC. +/- / TEMPORARY CONSTRUCTION EASEMENT = 3.489 AC. +/-

Legend

- PROPOSED ROUTE
- ACCESS EASEMENT
- PARCEL BOUNDARY
- ADJACENT PROPERTIES
- PIPELINE EASEMENT
- TEMPORARY CONSTRUCTION EASEMENT
- SECTION BOUNDARY
- COUNTY BOUNDARY

NOTES:

1. THIS IS A PRELIMINARY DOCUMENT AND IS INTENDED TO DEPICT THE APPROXIMATE LOCATION OF A PROPOSED PIPELINE EASEMENT.
2. THIS DOCUMENT DOES NOT REPRESENT A LAND SURVEY AND IS NOT INTENDED TO DEPICT THE FINAL ALIGNMENT
3. COORDINATE SYSTEM: UTM ZONE 14 NORTH, NAD83, US SURVEY FEET



SUMMIT CARBON SOLUTIONS

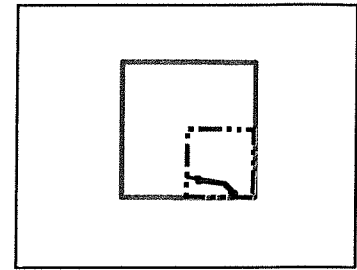
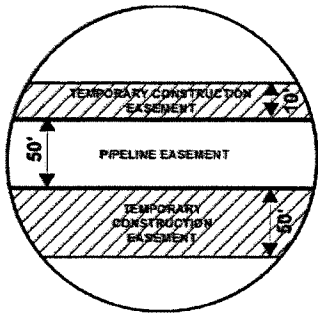
PRELIMINARY PIPELINE ROUTE

DRAWN BY:	AC	SUMMIT CARBON SOLUTIONS MIDWEST CARBON EXPRESS J&S NEIGER LIMITED PARTNERSHIP TAX ID: 6509 TRACT NUMBER: SD-BR-0520.000
CHECKED BY:	JW	
MAP DATE:	12/8/2021	
SCALE:	1 inch = 336'	
REV NO.	DATE	DESCRIPTION
F	11/9/2022	REVISED WORKSPACE
G	12/14/2022	REVISED PARCEL BOUNDARY
DRAWING NO. C-MCE-ACQ-SD-BR-0520.000		PROJECT NO. 450959 SHEET NO. 01 of 01

EXHIBIT "B"

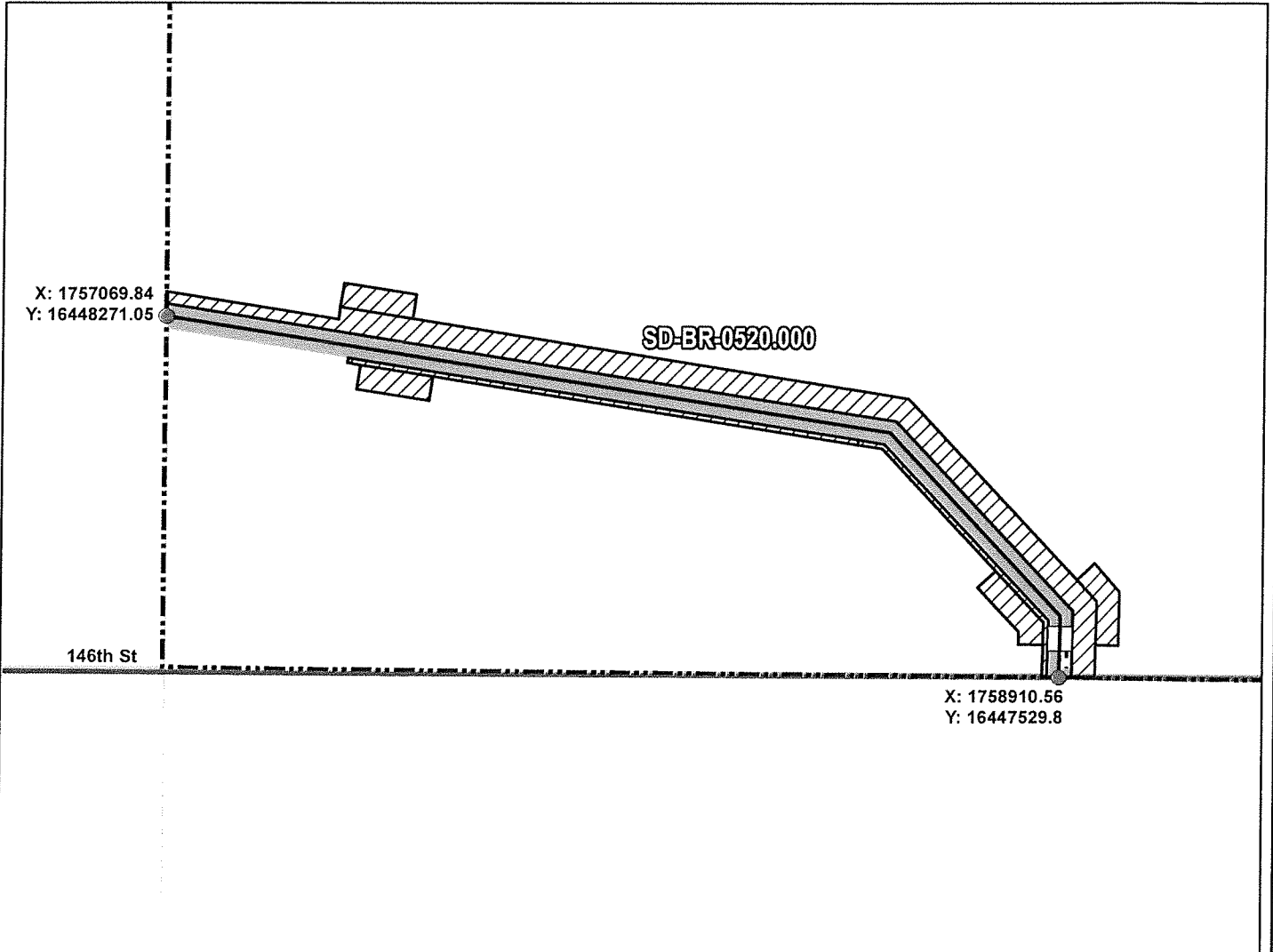
PRELIMINARY ROUTE

BROWN COUNTY, SOUTH DAKOTA



VICINITY MAP
N.T.S.

SEC. 21 T121N R64W



ROUTING LENGTH = 2151.626 FT +/- / ACCESS EASEMENT LENGTH = 35.486 FT +/-
 IMPACTS: PIPELINE EASEMENT = 2.453 AC. +/- / TEMPORARY CONSTRUCTION EASEMENT = 3.489 AC. +/-

Legend

- PROPOSED ROUTE
- - - ACCESS EASEMENT
- ROADS
- ▭ PARCEL BOUNDARY
- ▭ ADJACENT PROPERTIES
- ▨ PIPELINE EASEMENT
- ▨ TEMPORARY CONSTRUCTION EASEMENT
- ▭ SECTION BOUNDARY
- ▭ COUNTY BOUNDARY

NOTES:

1. THIS IS A PRELIMINARY DOCUMENT AND IS INTENDED TO DEPICT THE APPROXIMATE LOCATION OF A PROPOSED PIPELINE EASEMENT.
2. THIS DOCUMENT DOES NOT REPRESENT A LAND SURVEY AND IS NOT INTENDED TO DEPICT THE FINAL ALIGNMENT
3. COORDINATE SYSTEM: UTM ZONE 14 NORTH, NAD83, US SURVEY FEET

SIGNATURE: _____ DATE: _____



SUMMIT CARBON
SOLUTIONS

PRELIMINARY PIPELINE ROUTE

DRAWN BY:	AC	SUMMIT CARBON SOLUTIONS MIDWEST CARBON EXPRESS J&S NEIGER LIMITED PARTNERSHIP TAX ID: 6509 TRACT NUMBER: SD-BR-0520.000
CHECKED BY:	JW	
MAP DATE:	12/8/2021	
SCALE:	1 inch = 336'	
REV NO.	DATE	DESCRIPTION
F	11/9/2022	REVISED WORKSPACE
G	12/14/2022	REVISED PARCEL BOUNDARY
DRAWING NO. BW-MCE-ACQ-SD-BR-0520.000		PROJECT NO. 450959 SHEET NO. 01 of 01