

Attachment No. 1

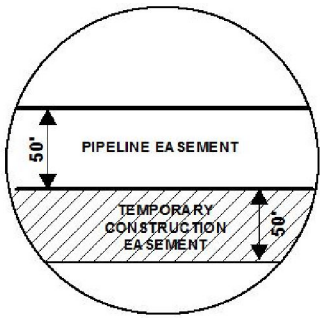
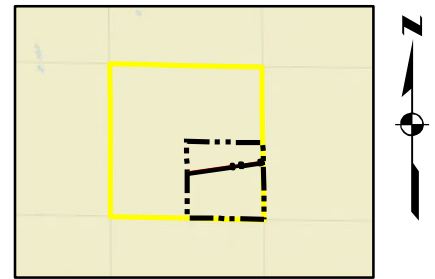


EXHIBIT "B"

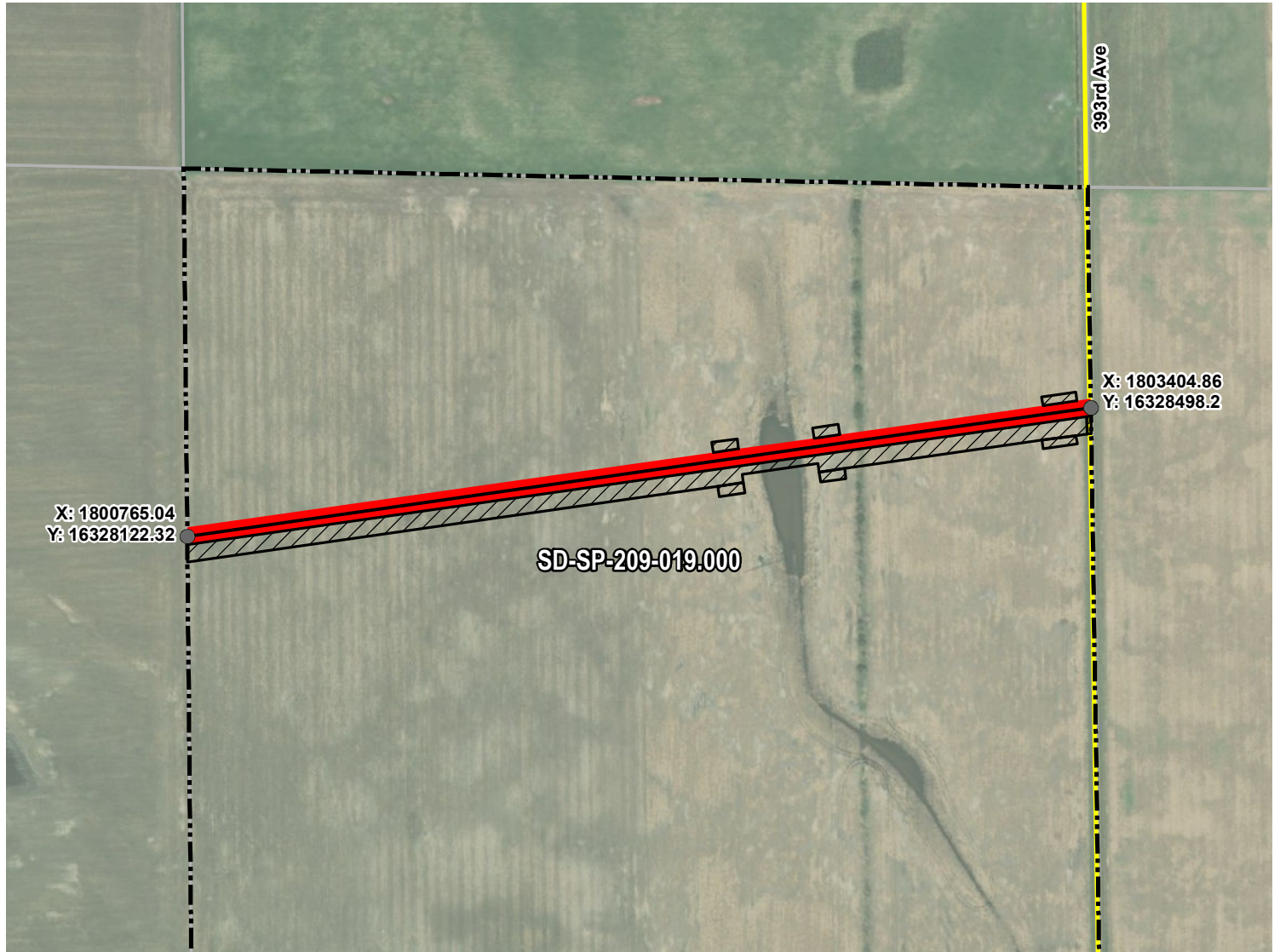
PRELIMINARY ROUTE

SPINK COUNTY, SOUTH DAKOTA



VICINITY MAP
N.T.S.

SEC. 14 T117N R63W



ROUTING LENGTH = 2666.448 FT +/-

IMPACTS: PIPELINE EASEMENT = 3.061 AC. +/- / TEMPORARY CONSTRUCTION EASEMENT = 3.254 AC. +/-

Legend

- PROPOSED ROUTE
- TEMPORARY CONSTRUCTION EASEMENT
- PARCEL BOUNDARY
- SECTION BOUNDARY
- ADJACENT PROPERTIES
- COUNTY BOUNDARY
- PIPELINE EASEMENT

NOTES:

1. THIS IS A PRELIMINARY DOCUMENT AND IS INTENDED TO DEPICT THE APPROXIMATE LOCATION OF A PROPOSED PIPELINE EASEMENT.
2. THIS DOCUMENT DOES NOT REPRESENT A LAND SURVEY AND IS NOT INTENDED TO DEPICT THE FINAL ALIGNMENT
3. COORDINATE SYSTEM: UTM ZONE 14 NORTH, NAD83, US SURVEY FEET

PRELIMINARY PIPELINE ROUTE

DRAWN BY: AC

CHECKED BY: JW

MAP DATE: 12/16/2021

SCALE: 1 inch = 478'

REV NO. DATE

B 3/7/2022

C 10/18/2022

SUMMIT CARBON SOLUTIONS
MIDWEST CARBON EXPRESS
MARGARET A. ELLETT LIVING TRUST

TAX ID: 003054
TRACT NUMBER: SD-SP-209-019.000

DESCRIPTION

REVISED WORKSPACE

REVISED WORKSPACE

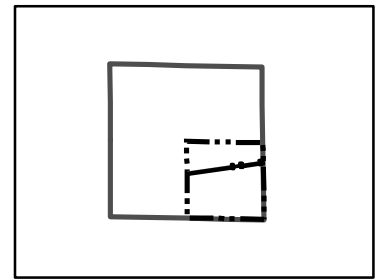
DRAWING NO.
C-MCE-ACQ-SD-SP-209-019.000

PROJECT NO. 450959

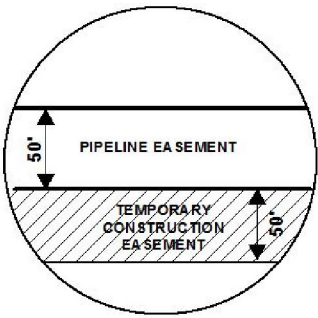
SHEET NO. 01 of 01



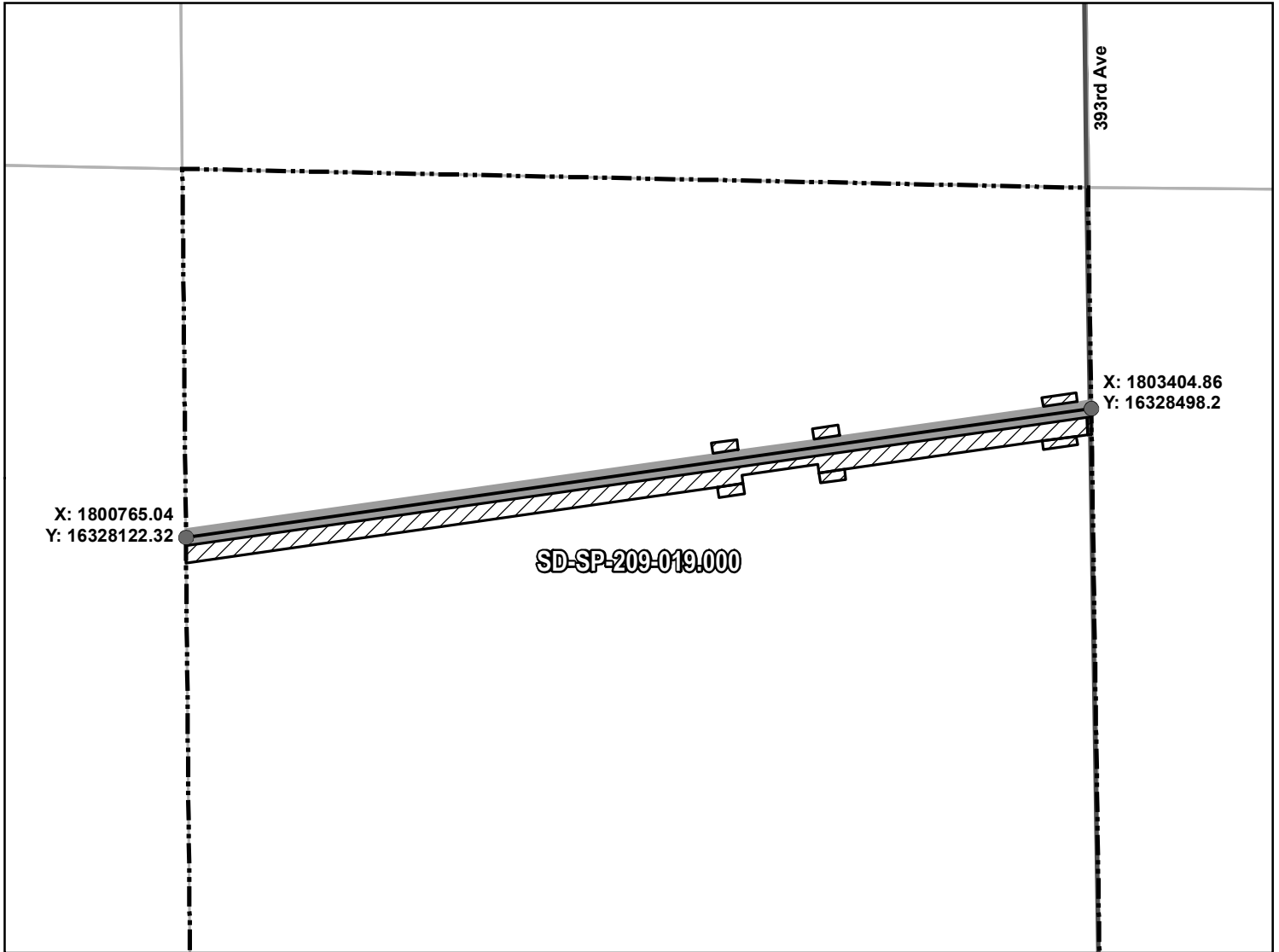
EXHIBIT "B" PRELIMINARY ROUTE SPINK COUNTY, SOUTH DAKOTA



VICINITY MAP
N.T.S.



SEC. 14 T117N R63W



ROUTING LENGTH = 2666.448 FT +/-

IMPACTS: PIPELINE EASEMENT = 3.061 AC. +/- / TEMPORARY CONSTRUCTION EASEMENT = 3.254 AC. +/-

Legend

- PROPOSED ROUTE
- ROADS
- ▭ PARCEL BOUNDARY
- ▭ ADJACENT PROPERTIES
- ▭ PIPELINE EASEMENT
- ▨ TEMPORARY CONSTRUCTION EASEMENT
- ▭ SECTION BOUNDARY
- ▭ COUNTY BOUNDARY

NOTES:

1. THIS IS A PRELIMINARY DOCUMENT AND IS INTENDED TO DEPICT THE APPROXIMATE LOCATION OF A PROPOSED PIPELINE EASEMENT.
2. THIS DOCUMENT DOES NOT REPRESENT A LAND SURVEY AND IS NOT INTENDED TO DEPICT THE FINAL ALIGNMENT
3. COORDINATE SYSTEM: UTM ZONE 14 NORTH, NAD83, US SURVEY FEET

SIGNATURE: _____ DATE: _____

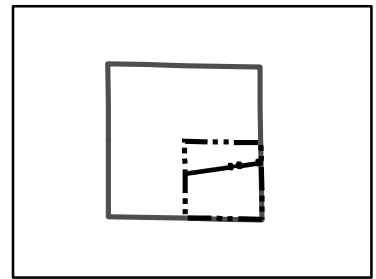


**SUMMIT CARBON
SOLUTIONS**

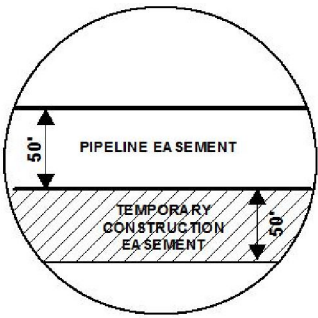
PRELIMINARY PIPELINE ROUTE

DRAWN BY:	AC	SUMMIT CARBON SOLUTIONS MIDWEST CARBON EXPRESS MARGARET A. ELLETT LIVING TRUST TAX ID: 003054 TRACT NUMBER: SD-SP-209-019.000
CHECKED BY:	JW	
MAP DATE:	12/16/2021	
SCALE:	1 inch = 478'	
REV NO.	DATE	DESCRIPTION
B	3/7/2022	REVISED WORKSPACE
C	10/18/2022	REVISED WORKSPACE
DRAWING NO. BW-MCE-ACQ-SD-SP-209-019.000	PROJECT NO. 450959	SHEET NO. 01 of 01

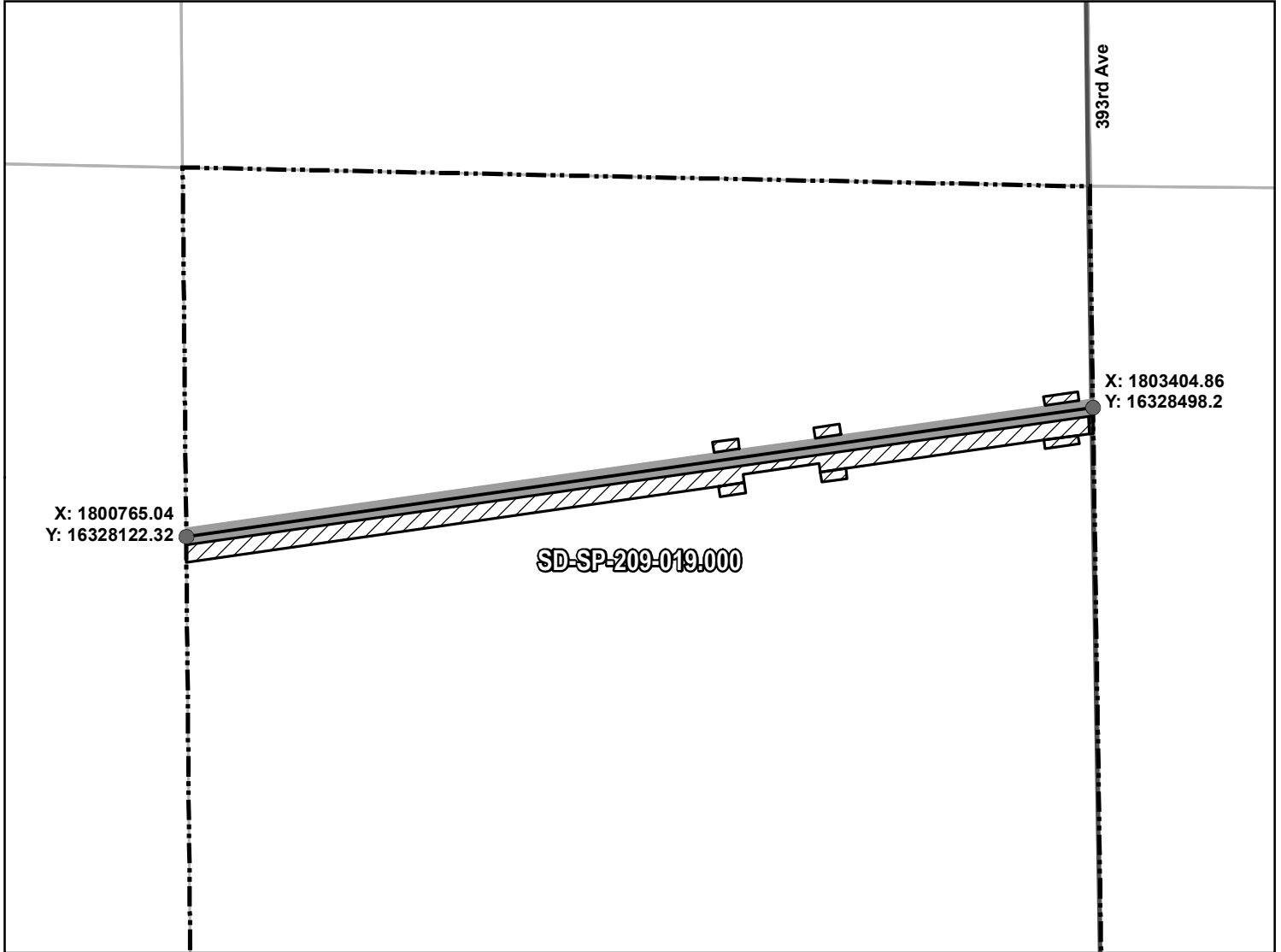
EXHIBIT "B" PRELIMINARY ROUTE SPINK COUNTY, SOUTH DAKOTA



VICINITY MAP
N.T.S.



SEC. 14 T117N R63W



ROUTING LENGTH = 2666.448 FT +/-

IMPACTS: PIPELINE EASEMENT = 3.061 AC. +/- / TEMPORARY CONSTRUCTION EASEMENT = 3.254 AC. +/-

Legend

- PROPOSED ROUTE
- ROADS
- ▭ PARCEL BOUNDARY
- ▭ ADJACENT PROPERTIES
- ▭ PIPELINE EASEMENT
- ▨ TEMPORARY CONSTRUCTION EASEMENT
- ▭ SECTION BOUNDARY
- ▭ COUNTY BOUNDARY

NOTES:

1. THIS IS A PRELIMINARY DOCUMENT AND IS INTENDED TO DEPICT THE APPROXIMATE LOCATION OF A PROPOSED PIPELINE EASEMENT.
2. THIS DOCUMENT DOES NOT REPRESENT A LAND SURVEY AND IS NOT INTENDED TO DEPICT THE FINAL ALIGNMENT
3. COORDINATE SYSTEM: UTM ZONE 14 NORTH, NAD83, US SURVEY FEET

SIGNATURE: _____ DATE: _____

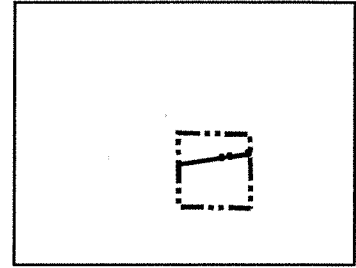
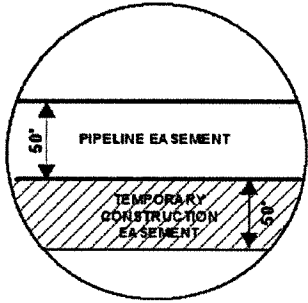


**SUMMIT CARBON
SOLUTIONS**

PRELIMINARY PIPELINE ROUTE

DRAWN BY:	AC	SUMMIT CARBON SOLUTIONS MIDWEST CARBON EXPRESS MARGARET A. ELLETT LIVING TRUST TAX ID: 003054 TRACT NUMBER: SD-SP-209-019.000
CHECKED BY:	JW	
MAP DATE:	12/16/2021	
SCALE:	1 inch = 478'	
REV NO.	DATE	DESCRIPTION
B	3/7/2022	REVISED WORKSPACE
C	10/18/2022	REVISED WORKSPACE
DRAWING NO. BW-MCE-ACQ-SD-SP-209-019.000	PROJECT NO. 450959	SHEET NO. 01 of 01

EXHIBIT "B" PRELIMINARY ROUTE SPINK COUNTY, SOUTH DAKOTA



VICINITY MAP
N.T.S.

SEC. 14 T117N R63W



ROUTING LENGTH = 2666.448 FT +/-

IMPACTS: PIPELINE EASEMENT = 3.061 AC. +/- / TEMPORARY CONSTRUCTION EASEMENT = 3.254 AC. +/-

Legend

- PROPOSED ROUTE
- PARCEL BOUNDARY
- ADJACENT PROPERTIES
- PIPELINE EASEMENT
- TEMPORARY CONSTRUCTION EASEMENT
- SECTION BOUNDARY
- COUNTY BOUNDARY

NOTES:

1. THIS IS A PRELIMINARY DOCUMENT AND IS INTENDED TO DEPICT THE APPROXIMATE LOCATION OF A PROPOSED PIPELINE EASEMENT.
2. THIS DOCUMENT DOES NOT REPRESENT A LAND SURVEY AND IS NOT INTENDED TO DEPICT THE FINAL ALIGNMENT
3. COORDINATE SYSTEM: UTM ZONE 14 NORTH, NAD83, US SURVEY FEET

PRELIMINARY PIPELINE ROUTE

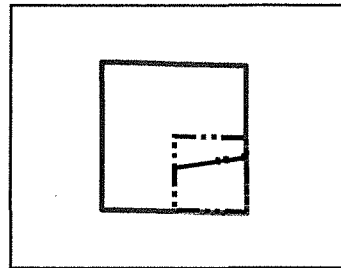
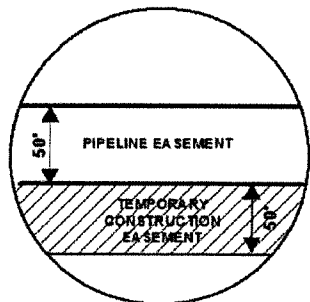
DRAWN BY: AC		SUMMIT CARBON SOLUTIONS MIDWEST CARBON EXPRESS MARGARET A. ELLETT LIVING TRUST TAX ID: 003054 TRACT NUMBER: SD-SP-209-019.000
CHECKED BY: JW		
MAP DATE: 12/16/2021		
SCALE: 1 inch = 478'		
REV NO.	DATE	DESCRIPTION
B	3/7/2022	REVISED WORKSPACE
C	10/18/2022	REVISED WORKSPACE
DRAWING NO. C-MCE-ACQ-SD-SP-209-019.000		PROJECT NO. 450959 SHEET NO. 01 of 01



EXHIBIT "B"

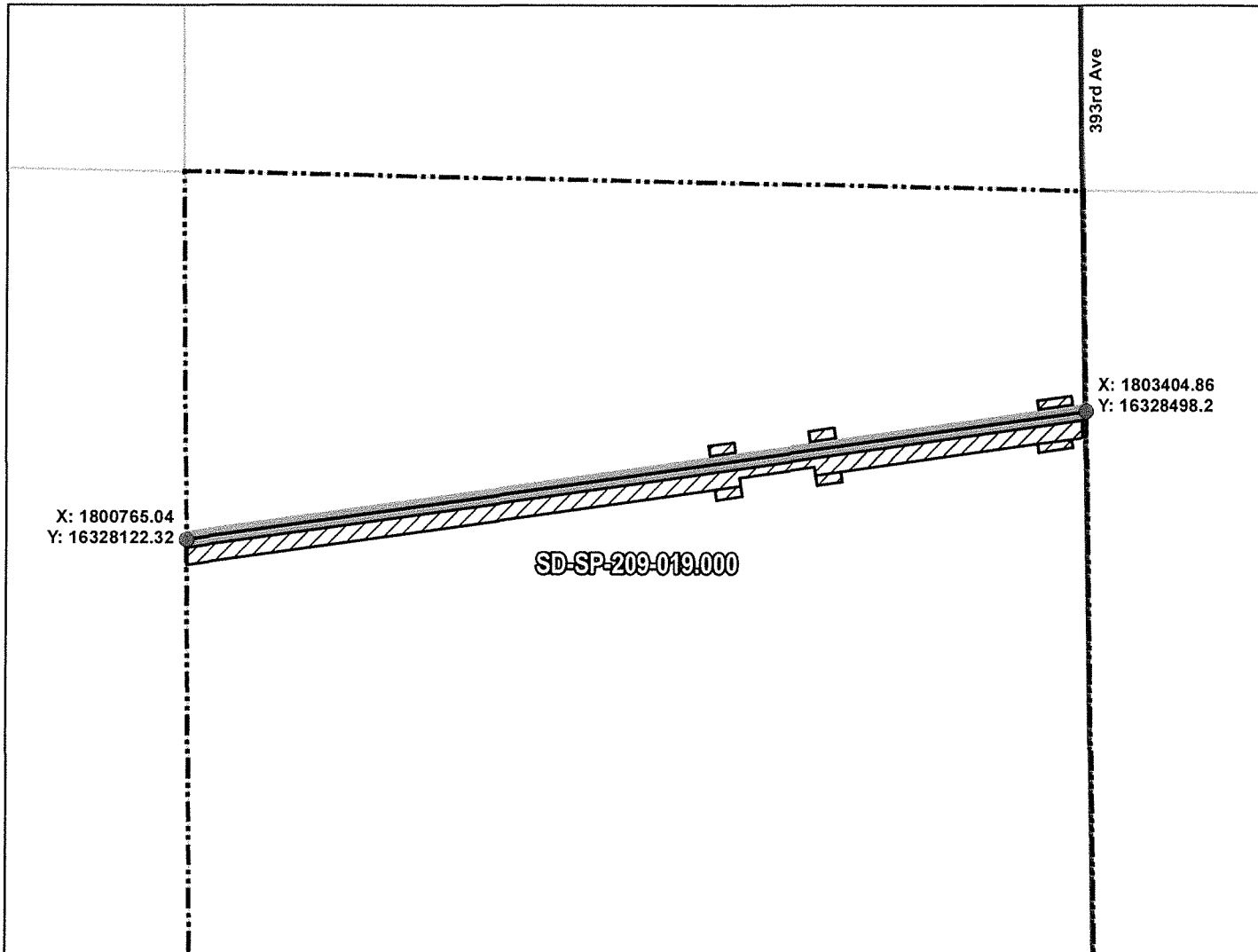
PRELIMINARY ROUTE

SPINK COUNTY, SOUTH DAKOTA



VICINITY MAP
N.T.S.

SEC. 14 T117N R63W



ROUTING LENGTH = 2666.448 FT +/-
 IMPACTS: PIPELINE EASEMENT = 3.061 AC. +/- / TEMPORARY CONSTRUCTION EASEMENT = 3.254 AC. +/-

Legend

- PROPOSED ROUTE
- ROADS
- PARCEL BOUNDARY
- ADJACENT PROPERTIES
- ▨ PIPELINE EASEMENT
- ▩ TEMPORARY CONSTRUCTION EASEMENT
- ▭ SECTION BOUNDARY
- ▭ COUNTY BOUNDARY

NOTES:

1. THIS IS A PRELIMINARY DOCUMENT AND IS INTENDED TO DEPICT THE APPROXIMATE LOCATION OF A PROPOSED PIPELINE EASEMENT.
2. THIS DOCUMENT DOES NOT REPRESENT A LAND SURVEY AND IS NOT INTENDED TO DEPICT THE FINAL ALIGNMENT
3. COORDINATE SYSTEM: UTM ZONE 14 NORTH, NAD83, US SURVEY FEET

SIGNATURE: _____ DATE: _____



SUMMIT CARBON SOLUTIONS

PRELIMINARY PIPELINE ROUTE

DRAWN BY:	AC	SUMMIT CARBON SOLUTIONS MIDWEST CARBON EXPRESS MARGARET A. ELLETT LIVING TRUST TAX ID: 003054 TRACT NUMBER: SD-SP-209-019.000
CHECKED BY:	JW	
MAP DATE:	12/16/2021	
SCALE:	1 inch = 478'	
REV NO.	DATE	DESCRIPTION
B	3/7/2022	REVISED WORKSPACE
C	10/18/2022	REVISED WORKSPACE
DRAWING NO.	PROJECT NO.	SHEET NO.
BW-MCE-ACQ-SD-SP-209-019.000	450959	01 of 01