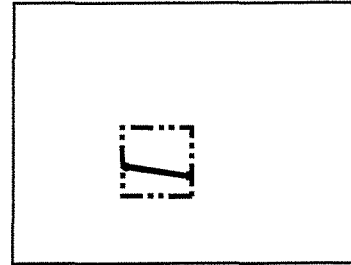


Attachment No. 1

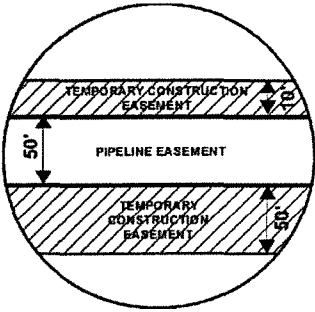
EXHIBIT "B"

PRELIMINARY ROUTE

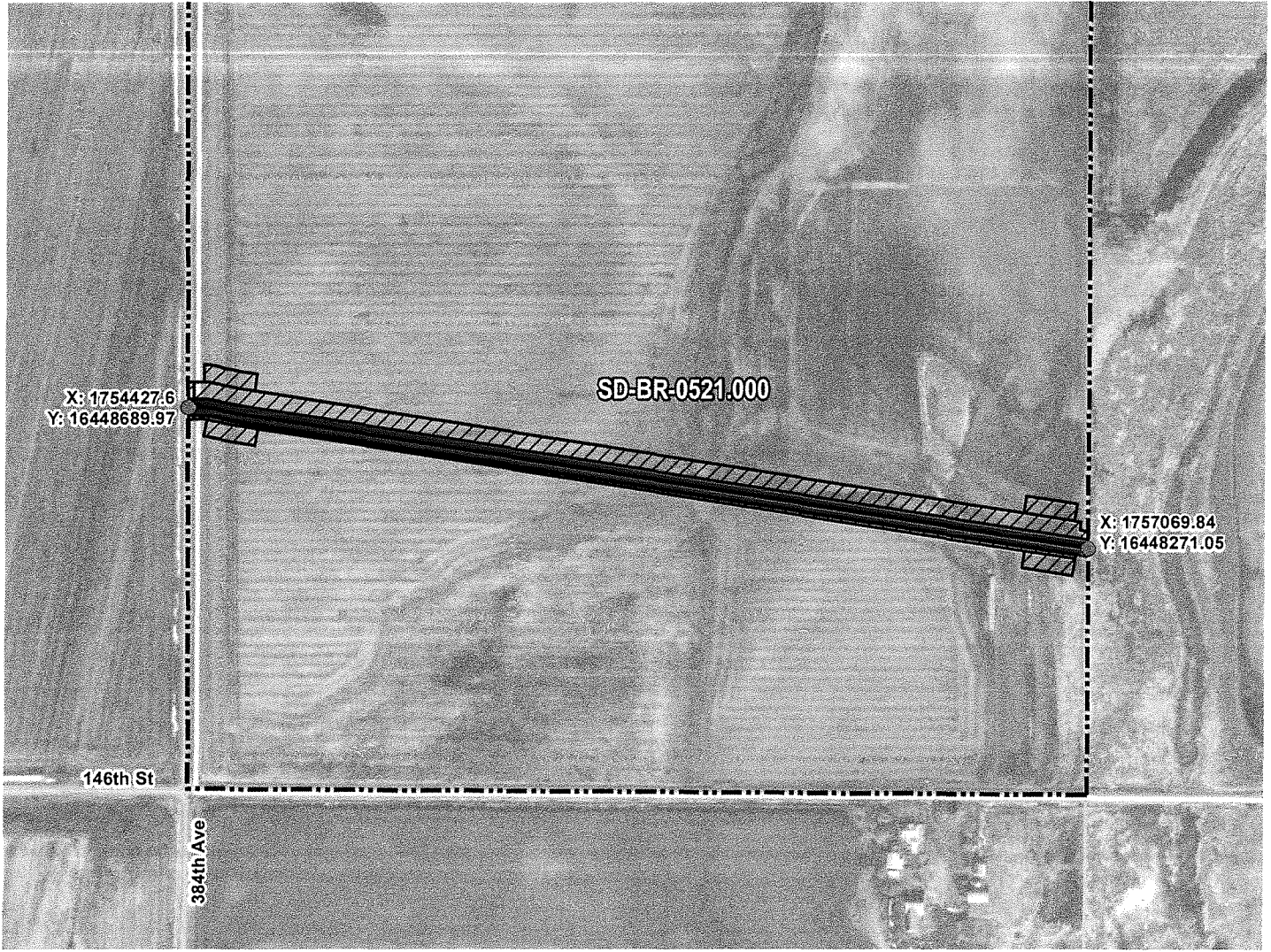
BROWN COUNTY, SOUTH DAKOTA



VICINITY MAP
N.T.S.



SEC. 21 T121N R64W



ROUTING LENGTH = 2675.945 FT +/-
 IMPACTS: PIPELINE EASEMENT = 3.072 AC. +/- / TEMPORARY CONSTRUCTION EASEMENT = 4.359 AC. +/-

PROPOSED ROUTE	PIPELINE EASEMENT
PARCEL BOUNDARY	TEMPORARY CONSTRUCTION EASEMENT
ADJACENT PROPERTIES	SECTION BOUNDARY
	COUNTY BOUNDARY

NOTES:

1. THIS IS A PRELIMINARY DOCUMENT AND IS INTENDED TO DEPICT THE APPROXIMATE LOCATION OF A PROPOSED PIPELINE EASEMENT.
2. THIS DOCUMENT DOES NOT REPRESENT A LAND SURVEY AND IS NOT INTENDED TO DEPICT THE FINAL ALIGNMENT
3. COORDINATE SYSTEM: UTM ZONE 14 NORTH, NAD83, US SURVEY FEET

PRELIMINARY PIPELINE ROUTE

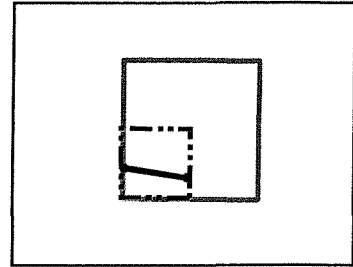
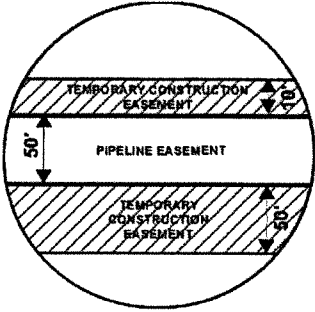
DRAWN BY:	AC	SUMMIT CARBON SOLUTIONS MIDWEST CARBON EXPRESS BOSSLY REAL ESTATE LIMITED PARTNERSHIP TAX ID: 6510 TRACT NUMBER: SD-BR-0521.000
CHECKED BY:	JW	
MAP DATE:	12/8/2021	
SCALE:	1 inch = 478'	
REV NO.	DATE	DESCRIPTION
C	10/13/2022	REVISED WORKSPACE
D	10/31/2022	REVISED WORKSPACE
DRAWING NO. C-MCE-ACQ-SD-BR-0521.000		PROJECT NO. 450959 SHEET NO. 01 of 01



EXHIBIT "B"

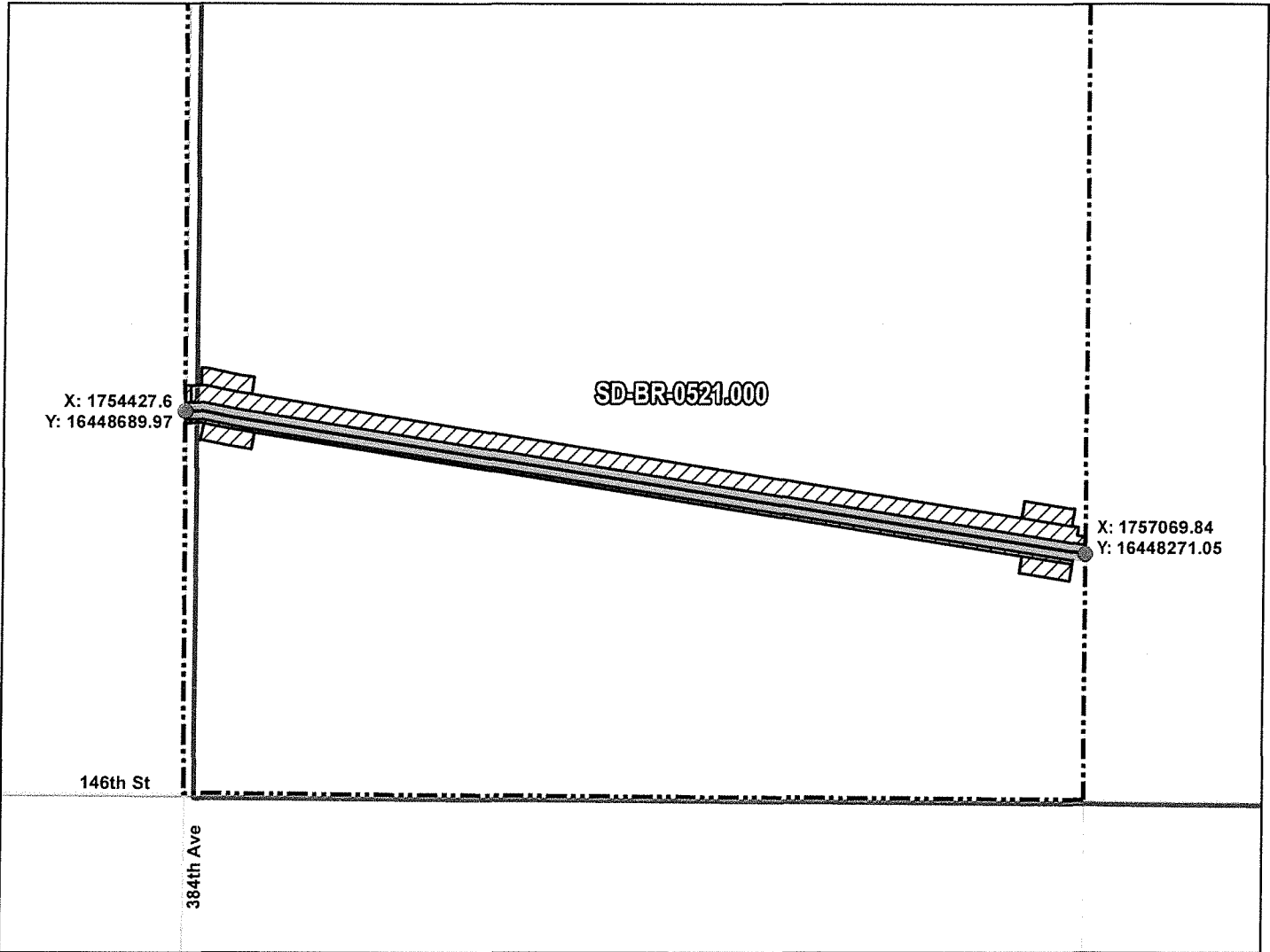
PRELIMINARY ROUTE

BROWN COUNTY, SOUTH DAKOTA



VICINITY MAP
N.T.S.

SEC. 21 T121N R64W



ROUTING LENGTH = 2675.945 FT +/-

IMPACTS: PIPELINE EASEMENT = 3.072 AC. +/- / TEMPORARY CONSTRUCTION EASEMENT = 4.359 AC. +/-

Legend

- PROPOSED ROUTE
- ROADS
- PARCEL BOUNDARY
- ADJACENT PROPERTIES
- PIPELINE EASEMENT
- TEMPORARY CONSTRUCTION EASEMENT
- SECTION BOUNDARY
- COUNTY BOUNDARY

NOTES:

1. THIS IS A PRELIMINARY DOCUMENT AND IS INTENDED TO DEPICT THE APPROXIMATE LOCATION OF A PROPOSED PIPELINE EASEMENT.
2. THIS DOCUMENT DOES NOT REPRESENT A LAND SURVEY AND IS NOT INTENDED TO DEPICT THE FINAL ALIGNMENT
3. COORDINATE SYSTEM: UTM ZONE 14 NORTH, NAD83, US SURVEY FEET

SIGNATURE: _____ DATE: _____



SUMMIT CARBON SOLUTIONS

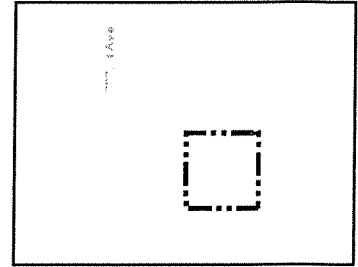
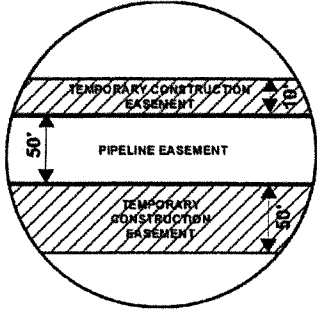
PRELIMINARY PIPELINE ROUTE

DRAWN BY:	AC	SUMMIT CARBON SOLUTIONS MIDWEST CARBON EXPRESS BOSSLY REAL ESTATE LIMITED PARTNERSHIP TAX ID: 6510 TRACT NUMBER: SD-BR-0521.000
CHECKED BY:	JW	
MAP DATE:	12/8/2021	
SCALE:	1 inch = 478'	
REV NO.	DATE	DESCRIPTION
C	10/13/2022	REVISED WORKSPACE
D	10/31/2022	REVISED WORKSPACE
DRAWING NO.	PROJECT NO.	SHEET NO.
BW-MCE-ACQ-SD-BR-0521.000	450959	01 of 01

EXHIBIT "B"

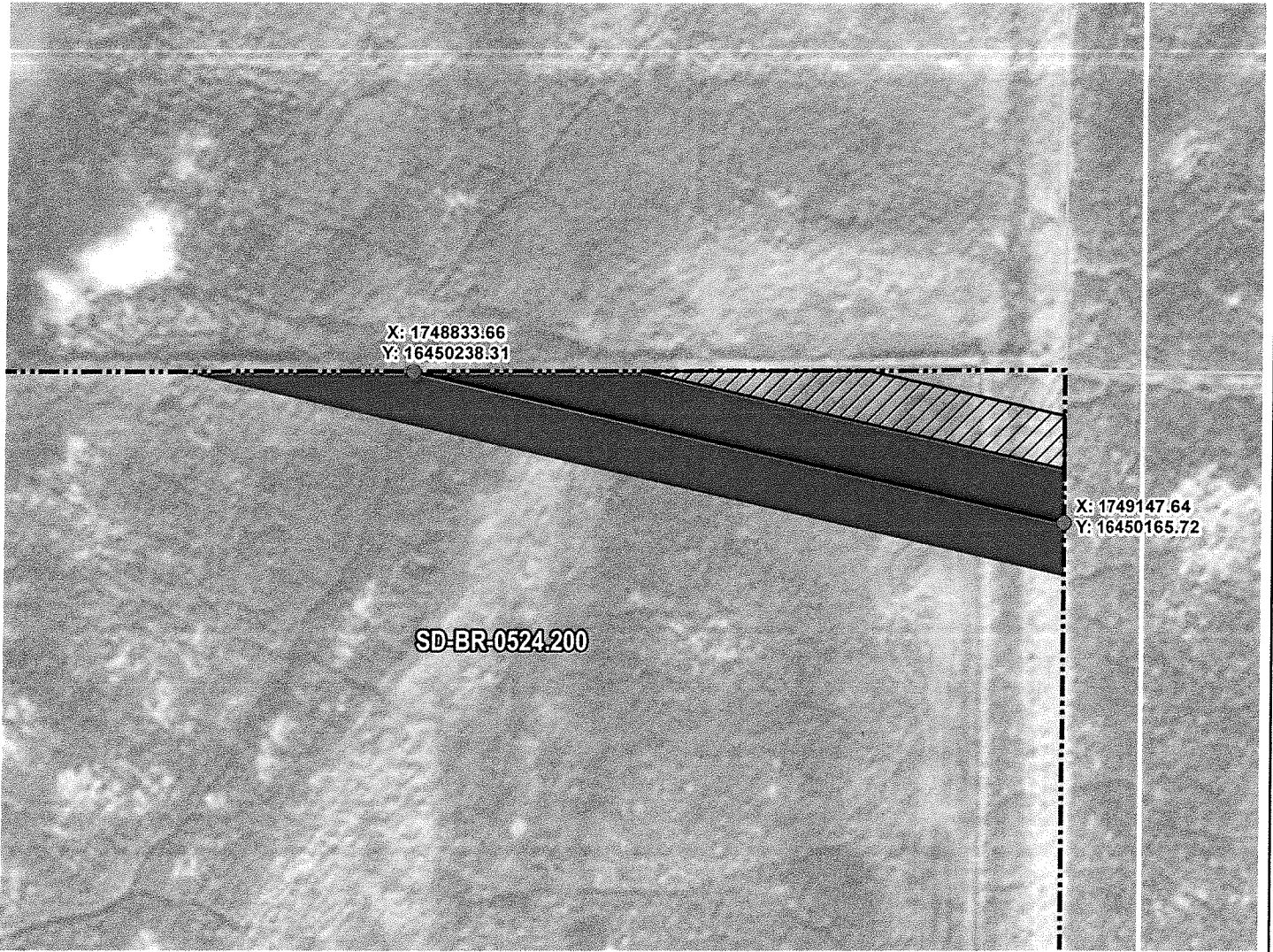
PRELIMINARY ROUTE

BROWN COUNTY, SOUTH DAKOTA



VICINITY MAP
N.T.S.

SEC. 19 T121N R64W



ROUTING LENGTH = 322.259 FT +/-

IMPACTS: PIPELINE EASEMENT = 0.37 AC. +/- / TEMPORARY CONSTRUCTION EASEMENT = 0.088 AC. +/-

Legend

- PROPOSED ROUTE
- PIPELINE EASEMENT
- PARCEL BOUNDARY
- TEMPORARY CONSTRUCTION EASEMENT
- ADJACENT PROPERTIES
- SECTION BOUNDARY
- COUNTY BOUNDARY

NOTES:

1. THIS IS A PRELIMINARY DOCUMENT AND IS INTENDED TO DEPICT THE APPROXIMATE LOCATION OF A PROPOSED PIPELINE EASEMENT.
2. THIS DOCUMENT DOES NOT REPRESENT A LAND SURVEY AND IS NOT INTENDED TO DEPICT THE FINAL ALIGNMENT
3. COORDINATE SYSTEM: UTM ZONE 14 NORTH, NAD83, US SURVEY FEET

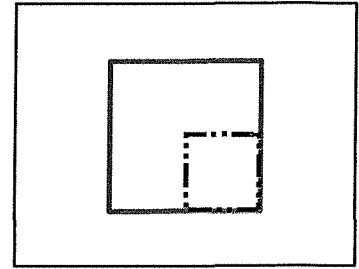
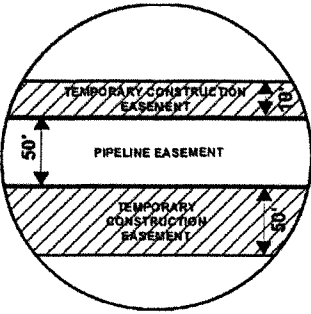


PRELIMINARY PIPELINE ROUTE		
DRAWN BY:	AC	SUMMIT CARBON SOLUTIONS MIDWEST CARBON EXPRESS BOSSLY REAL ESTATE LIMITED PARTNERSHIP TAX ID: 6476 TRACT NUMBER: SD-BR-0524.200
CHECKED BY:	JW	
MAP DATE:	12/8/2021	
SCALE:	1 inch = 78'	
REV NO.	DATE	DESCRIPTION
B	3/8/2022	REVISED WORKSPACE
C	12/8/2022	REVISED PARCEL BOUNDARY
DRAWING NO. C-MCE-ACQ-SD-BR-0524.200		PROJECT NO. 450959 SHEET NO. 01 of 01

EXHIBIT "B"

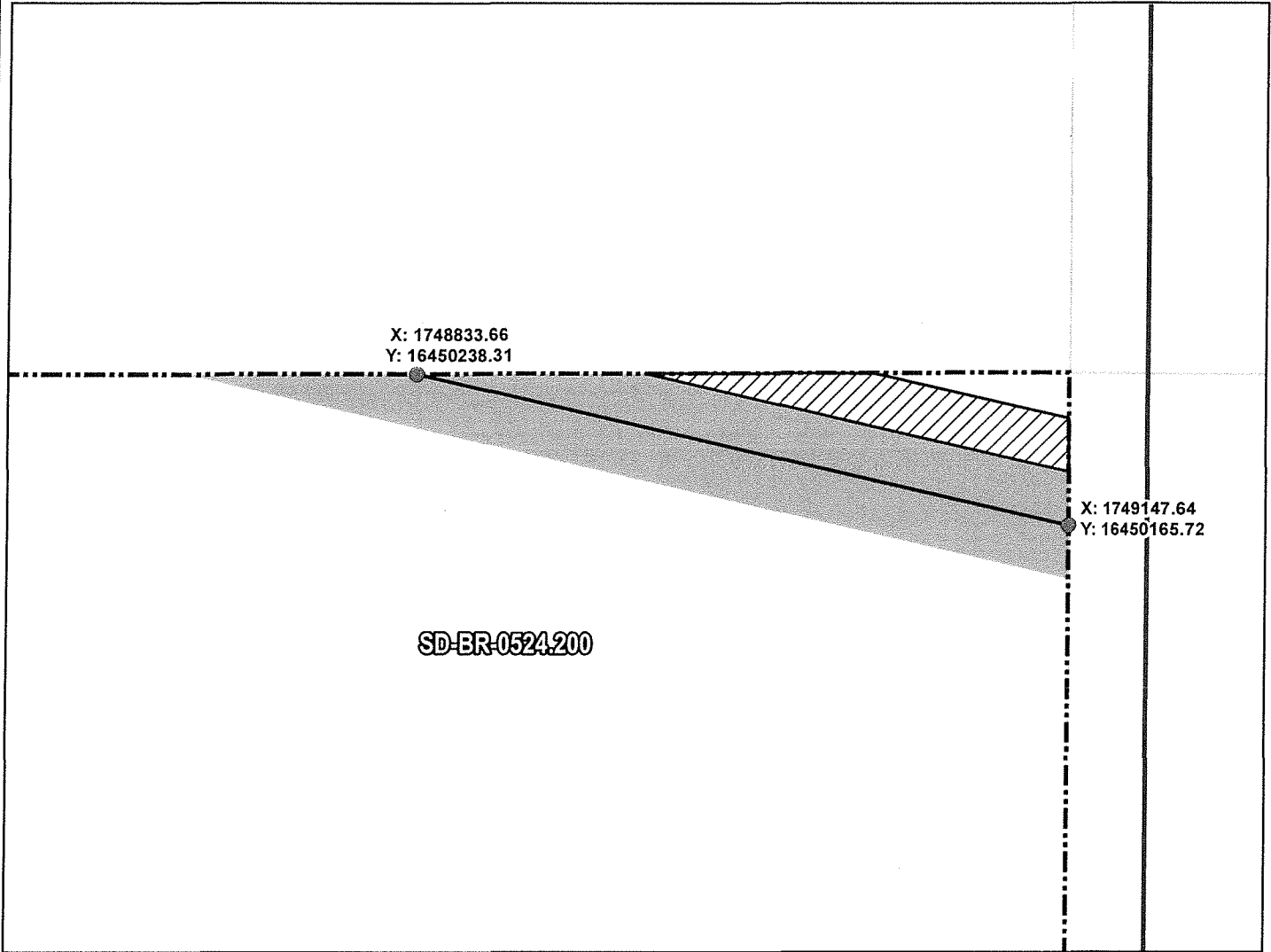
PRELIMINARY ROUTE

BROWN COUNTY, SOUTH DAKOTA



VICINITY MAP
N.T.S.

SEC. 19 T121N R64W



ROUTING LENGTH = 322.259 FT +/-
 IMPACTS: PIPELINE EASEMENT = 0.37 AC. +/- / TEMPORARY CONSTRUCTION EASEMENT = 0.088 AC. +/-

Legend

- PROPOSED ROUTE
- ROADS
- PARCEL BOUNDARY
- ADJACENT PROPERTIES
- PIPELINE EASEMENT
- TEMPORARY CONSTRUCTION EASEMENT
- SECTION BOUNDARY
- COUNTY BOUNDARY

NOTES:

1. THIS IS A PRELIMINARY DOCUMENT AND IS INTENDED TO DEPICT THE APPROXIMATE LOCATION OF A PROPOSED PIPELINE EASEMENT.
2. THIS DOCUMENT DOES NOT REPRESENT A LAND SURVEY AND IS NOT INTENDED TO DEPICT THE FINAL ALIGNMENT
3. COORDINATE SYSTEM: UTM ZONE 14 NORTH, NAD83, US SURVEY FEET

SIGNATURE: _____ DATE: _____



PRELIMINARY PIPELINE ROUTE

DRAWN BY:	AC	SUMMIT CARBON SOLUTIONS MIDWEST CARBON EXPRESS BOSSLY REAL ESTATE LIMITED PARTNERSHIP TAX ID: 6476 TRACT NUMBER: SD-BR-0524.200
CHECKED BY:	JW	
MAP DATE:	12/8/2021	
SCALE:	1 inch = 78'	
REV NO.	DATE	DESCRIPTION
B	3/8/2022	REVISED WORKSPACE
C	12/8/2022	REVISED PARCEL BOUNDARY
DRAWING NO. BW-MCE-ACQ-SD-BR-0524.200		PROJECT NO. 450959 SHEET NO. 01 of 01