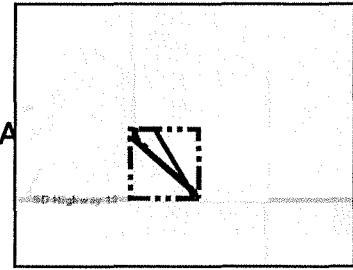
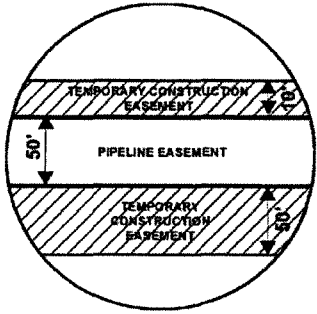


Attachment No. 1

EXHIBIT "B"

PRELIMINARY ROUTE

MCPHERSON COUNTY, SOUTH DAKOTA



VICINITY MAP
N.T.S.

SEC. 16 T126N R68W



ROUTING LENGTH = 3702.399 FT +/- / ACCESS EASEMENT LENGTH = 61.191 FT +/-
 IMPACTS: PIPELINE EASEMENT = 4.25 AC. +/- / TEMPORARY CONSTRUCTION EASEMENT = 8.384 AC. +/-

Legend

- PROPOSED ROUTE
- - - ACCESS EASEMENT
- ▤ PARCEL BOUNDARY
- ADJACENT PROPERTIES
- PIPELINE EASEMENT
- ▨ TEMPORARY CONSTRUCTION EASEMENT
- SECTION BOUNDARY
- COUNTY BOUNDARY

NOTES:

1. THIS IS A PRELIMINARY DOCUMENT AND IS INTENDED TO DEPICT THE APPROXIMATE LOCATION OF A PROPOSED PIPELINE EASEMENT.
2. THIS DOCUMENT DOES NOT REPRESENT A LAND SURVEY AND IS NOT INTENDED TO DEPICT THE FINAL ALIGNMENT
3. COORDINATE SYSTEM: UTM ZONE 14 NORTH, NAD83, US SURVEY FEET



SUMMIT CARBON SOLUTIONS

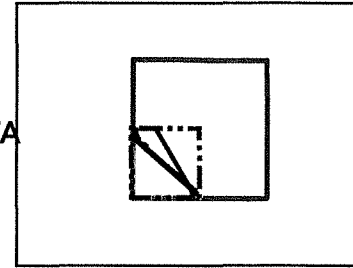
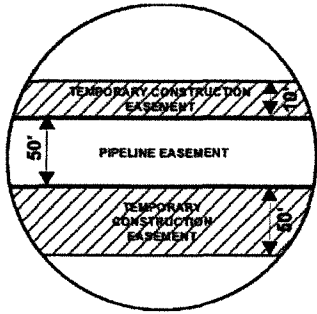
PRELIMINARY PIPELINE ROUTE

DRAWN BY: AC		SUMMIT CARBON SOLUTIONS MIDWEST CARBON EXPRESS KETTERLING FARM, LLC TAX ID: 1186 TRACT NUMBER: SD-MP-0653.000
CHECKED BY: JW		
MAP DATE: 12/17/2021		
SCALE: 1 inch = 618'		
REV NO.	DATE	DESCRIPTION
D	7/18/2022	REVISED WORKSPACE
E	12/8/2022	REVISED PARCEL BOUNDARY
DRAWING NO. C-MCE-ACQ-SD-MP-0653.000		PROJECT NO. 450959 SHEET NO. 01 of 01

EXHIBIT "B"

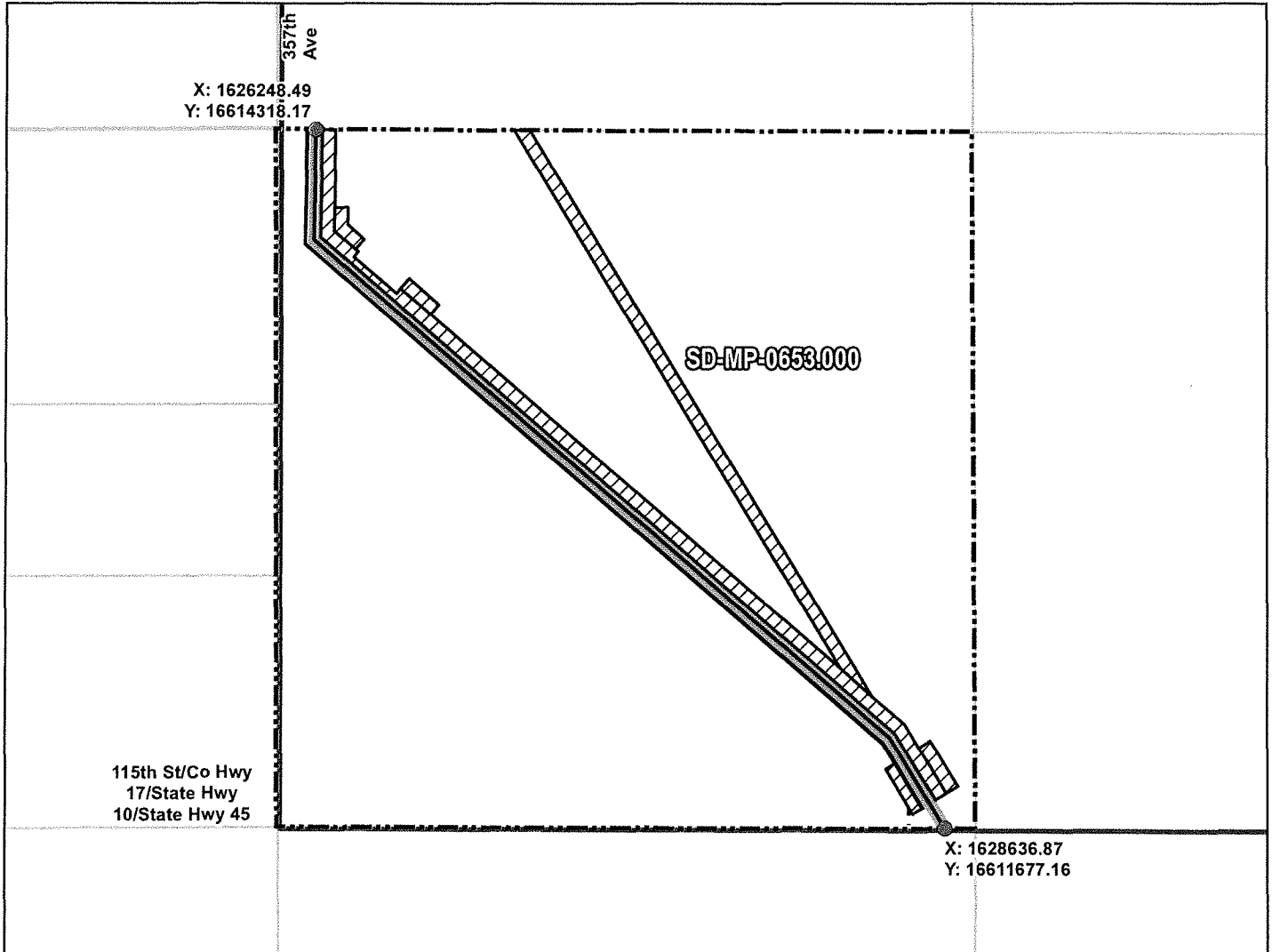
PRELIMINARY ROUTE

MCPHERSON COUNTY, SOUTH DAKOTA



VICINITY MAP
N.T.S.

SEC. 16 T126N R68W



ROUTING LENGTH = 3702.399 FT +/- / ACCESS EASEMENT LENGTH = 61.191 FT +/-
 IMPACTS: PIPELINE EASEMENT = 4.25 AC. +/- / TEMPORARY CONSTRUCTION EASEMENT = 8.384 AC. +/-

Legend

- PROPOSED ROUTE
- - - ACCESS EASEMENT
- ROADS
- ▭ PARCEL BOUNDARY
- ▭ ADJACENT PROPERTIES
- ▨ PIPELINE EASEMENT
- ▨ TEMPORARY CONSTRUCTION EASEMENT
- ▭ SECTION BOUNDARY
- ▭ COUNTY BOUNDARY

NOTES:

1. THIS IS A PRELIMINARY DOCUMENT AND IS INTENDED TO DEPICT THE APPROXIMATE LOCATION OF A PROPOSED PIPELINE EASEMENT.
2. THIS DOCUMENT DOES NOT REPRESENT A LAND SURVEY AND IS NOT INTENDED TO DEPICT THE FINAL ALIGNMENT
3. COORDINATE SYSTEM: UTM ZONE 14 NORTH, NAD83, US SURVEY FEET

SIGNATURE: _____ DATE: _____



SUMMIT CARBON SOLUTIONS

PRELIMINARY PIPELINE ROUTE

DRAWN BY: AC

CHECKED BY: JW

MAP DATE: 12/17/2021

SCALE: 1 inch = 618'

REV NO.	DATE	DESCRIPTION
D	7/18/2022	REVISED WORKSPACE
E	12/8/2022	REVISED PARCEL BOUNDARY

**SUMMIT CARBON SOLUTIONS
MIDWEST CARBON EXPRESS
KETTERLING FARM, LLC**

TAX ID: 1186
TRACT NUMBER: SD-MP-0653.000