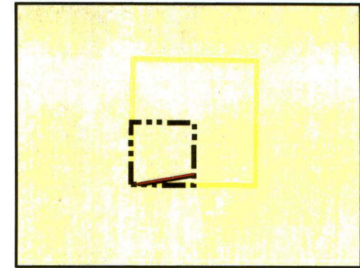
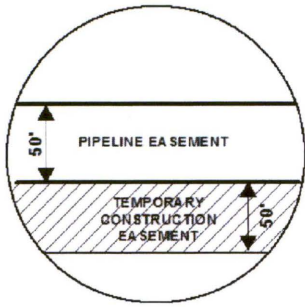


Attachment No. 1

EXHIBIT "B"

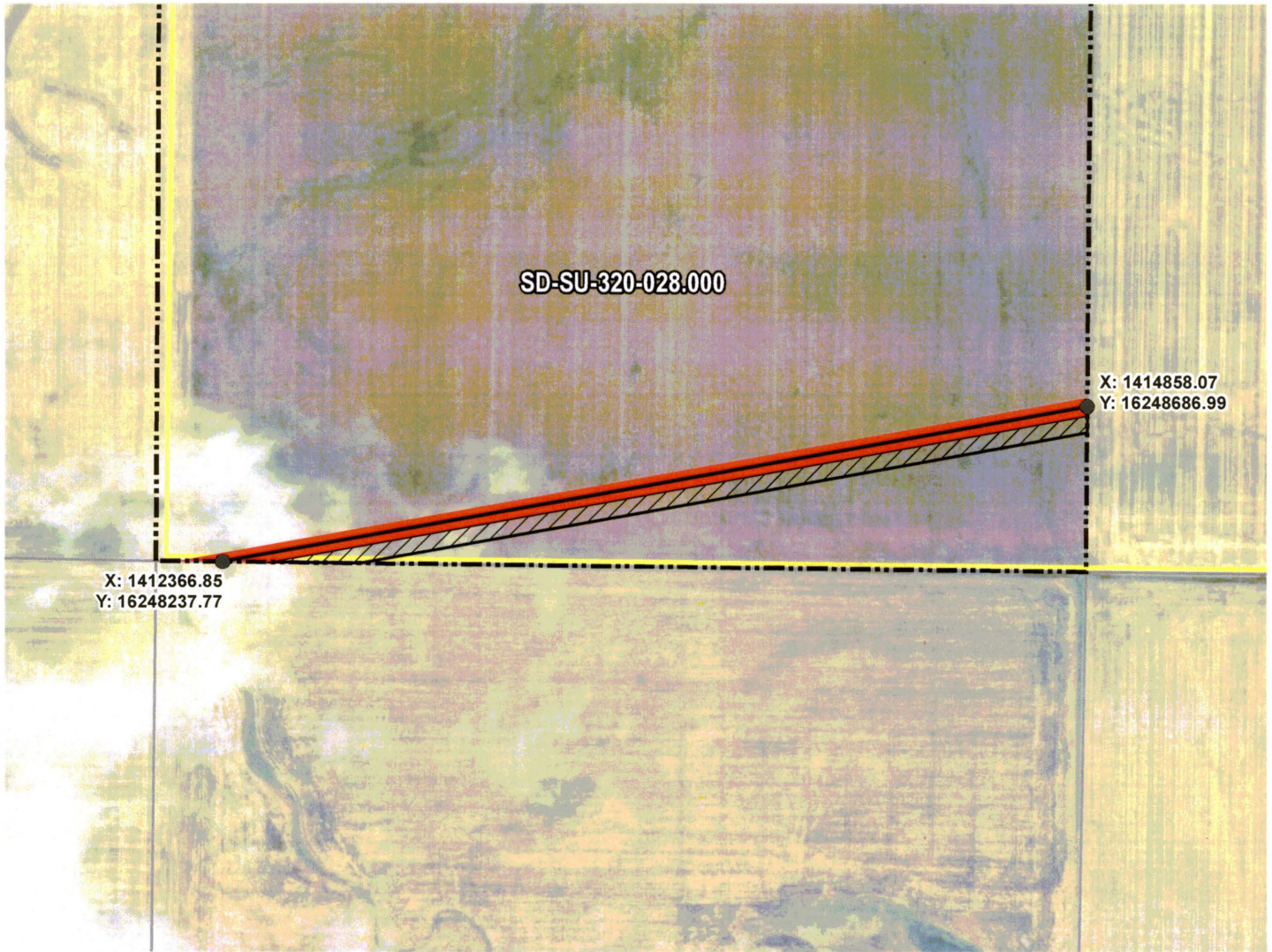
PRELIMINARY ROUTE

SULLY COUNTY, SOUTH DAKOTA



VICINITY MAP
N.T.S.

SEC. 33 T115N R75W



ROUTING LENGTH = 2531.405 FT +/-

IMPACTS: PIPELINE EASEMENT = 2.906 AC. +/- / TEMPORARY CONSTRUCTION EASEMENT = 2.596 AC. +/-

Legend

- PROPOSED ROUTE
- TEMPORARY CONSTRUCTION EASEMENT
- PARCEL BOUNDARY
- SECTION BOUNDARY
- ADJACENT PROPERTIES
- COUNTY BOUNDARY

NOTES:

1. THIS IS A PRELIMINARY DOCUMENT AND IS INTENDED TO DEPICT THE APPROXIMATE LOCATION OF A PROPOSED PIPELINE EASEMENT.
2. THIS DOCUMENT DOES NOT REPRESENT A LAND SURVEY AND IS NOT INTENDED TO DEPICT THE FINAL ALIGNMENT
3. COORDINATE SYSTEM: UTM ZONE 14 NORTH, NAD83, US SURVEY FEET



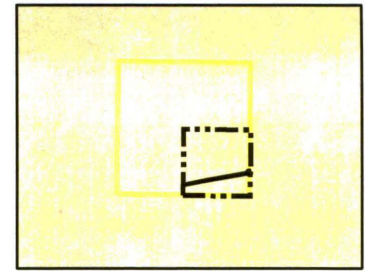
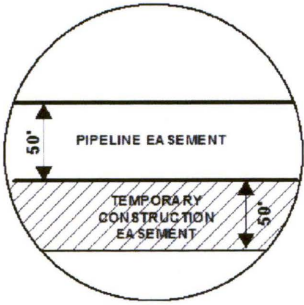
PRELIMINARY PIPELINE ROUTE

DRAWN BY:	AC	SUMMIT CARBON SOLUTIONS MIDWEST CARBON EXPRESS DWAYNE HOFER CORPORATION TAX ID: 2599 TRACT NUMBER: SD-SU-320-028.000
CHECKED BY:	JW	
MAP DATE:	12/14/2021	
SCALE: 1 inch = 471'		
REV NO.	DATE	DESCRIPTION
C	5/18/2022	REVISED WORKSPACE
D	6/2/2022	REVISED WORKSPACE
DRAWING NO. C-MCE-ACQ-SD-SU-320-028.000		PROJECT NO. 450959 SHEET NO. 01 of 01

EXHIBIT "B"

PRELIMINARY ROUTE

SULLY COUNTY, SOUTH DAKOTA



VICINITY MAP
N.T.S.

SEC. 33 T115N R75W



ROUTING LENGTH = 2729.412 FT +/-
IMPACTS: PIPELINE EASEMENT = 3.133 AC. +/- / TEMPORARY CONSTRUCTION EASEMENT = 3.248 AC. +/-

Legend

- PROPOSED ROUTE
- PIPELINE EASEMENT
- PARCEL BOUNDARY
- TEMPORARY CONSTRUCTION EASEMENT
- ADJACENT PROPERTIES
- SECTION BOUNDARY
- COUNTY BOUNDARY

NOTES:

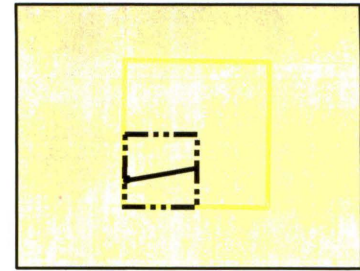
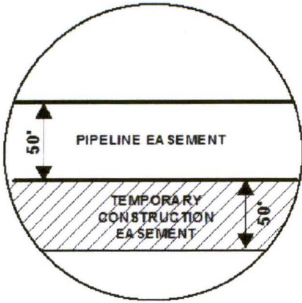
1. THIS IS A PRELIMINARY DOCUMENT AND IS INTENDED TO DEPICT THE APPROXIMATE LOCATION OF A PROPOSED PIPELINE EASEMENT.
2. THIS DOCUMENT DOES NOT REPRESENT A LAND SURVEY AND IS NOT INTENDED TO DEPICT THE FINAL ALIGNMENT
3. COORDINATE SYSTEM: UTM ZONE 14 NORTH, NAD83, US SURVEY FEET



PRELIMINARY PIPELINE ROUTE

DRAWN BY: AC		SUMMIT CARBON SOLUTIONS MIDWEST CARBON EXPRESS DWAYNE HOFER CORPORATION TAX ID: 2600 TRACT NUMBER: SD-SU-320-029.000
CHECKED BY: JW		
MAP DATE: 12/14/2021		
SCALE: 1 inch = 479'		
REV NO.	DATE	DESCRIPTION
E	7/13/2022	REVISED WORKSPACE
F	7/20/2022	REVISED WORKSPACE
DRAWING NO. C-MCE-ACQ-SD-SU-320-029.000		PROJECT NO. 450959
		SHEET NO. 01 of 01

EXHIBIT "B" PRELIMINARY ROUTE SULLY COUNTY, SOUTH DAKOTA



VICINITY MAP
N.T.S.

SEC. 34 T115N R75W



ROUTING LENGTH = 2678.734 FT +/-
IMPACTS: PIPELINE EASEMENT = 3.075 AC. +/- / TEMPORARY CONSTRUCTION EASEMENT = 3.19 AC. +/-

Legend

- PROPOSED ROUTE
- PARCEL BOUNDARY
- ADJACENT PROPERTIES
- PIPELINE EASEMENT
- TEMPORARY CONSTRUCTION EASEMENT
- SECTION BOUNDARY
- COUNTY BOUNDARY

NOTES:

1. THIS IS A PRELIMINARY DOCUMENT AND IS INTENDED TO DEPICT THE APPROXIMATE LOCATION OF A PROPOSED PIPELINE EASEMENT.
2. THIS DOCUMENT DOES NOT REPRESENT A LAND SURVEY AND IS NOT INTENDED TO DEPICT THE FINAL ALIGNMENT
3. COORDINATE SYSTEM: UTM ZONE 14 NORTH, NAD83, US SURVEY FEET



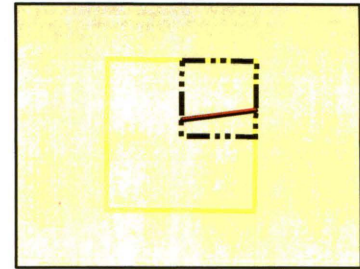
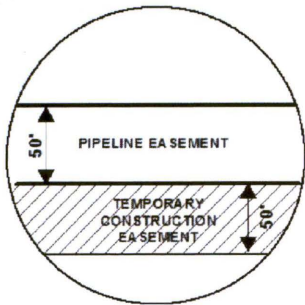
PRELIMINARY PIPELINE ROUTE

DRAWN BY:	AC	SUMMIT CARBON SOLUTIONS MIDWEST CARBON EXPRESS DWAYNE HOFER CORPORATION TAX ID: 2604 TRACT NUMBER: SD-SU-320-030.000
CHECKED BY:	JW	
MAP DATE:	12/14/2021	
SCALE:	1 inch = 481'	
REV NO.	DATE	DESCRIPTION
E	7/13/2022	REVISED WORKSPACE
F	7/20/2022	REVISED WORKSPACE
DRAWING NO. C-MCE-ACQ-SD-SU-320-030.000		PROJECT NO. 450959 SHEET NO. 01 of 01

EXHIBIT "B"

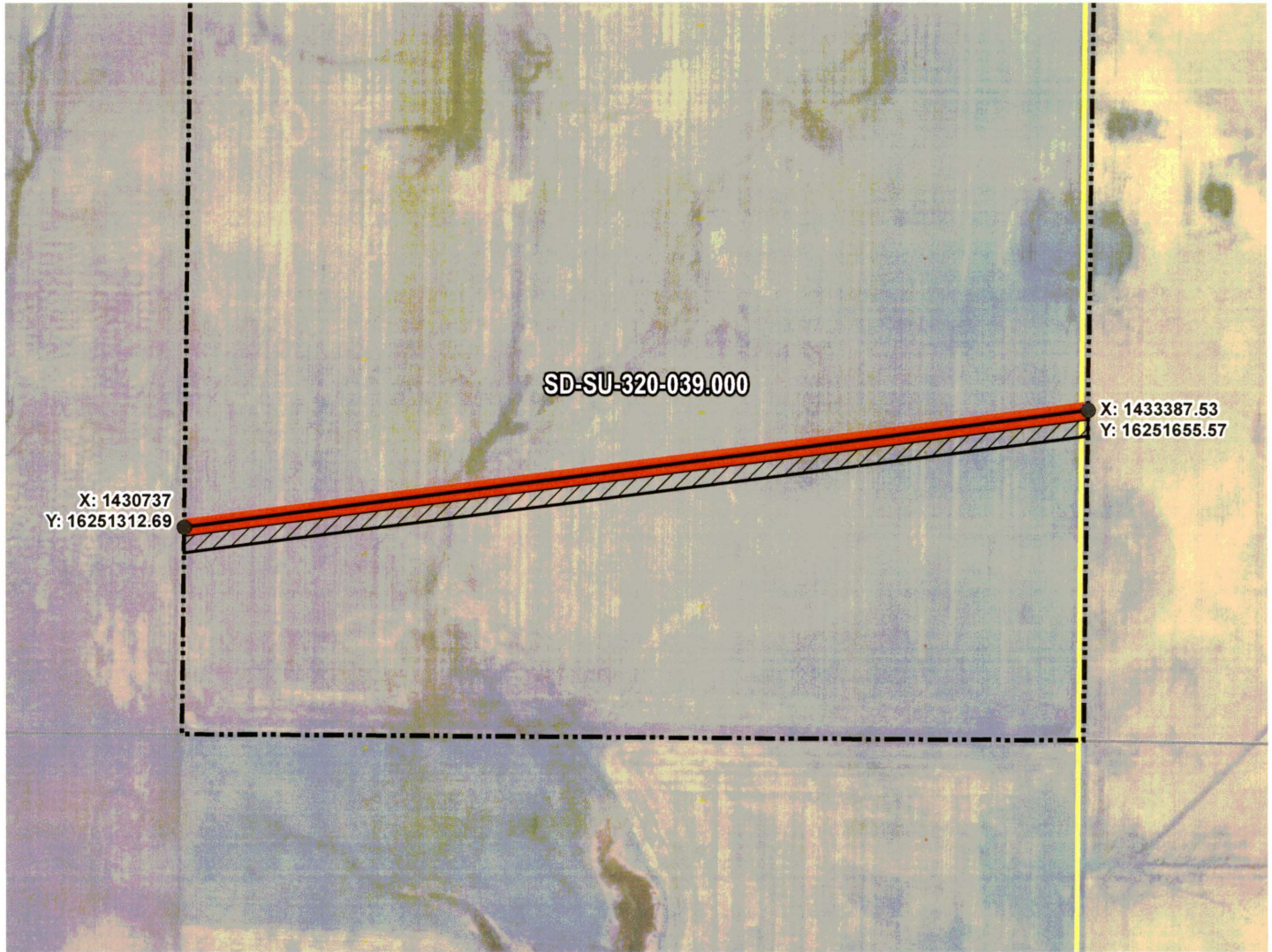
PRELIMINARY ROUTE

SULLY COUNTY, SOUTH DAKOTA



VICINITY MAP
N.T.S.

SEC. 36 T115N R75W



ROUTING LENGTH = 2672.622 FT +/-

IMPACTS: PIPELINE EASEMENT = 3.068 AC. +/- / TEMPORARY CONSTRUCTION EASEMENT = 3.068 AC. +/-

Legend

- PROPOSED ROUTE
- PIPELINE EASEMENT
- PARCEL BOUNDARY
- TEMPORARY CONSTRUCTION EASEMENT
- ADJACENT PROPERTIES
- SECTION BOUNDARY
- COUNTY BOUNDARY

NOTES:

1. THIS IS A PRELIMINARY DOCUMENT AND IS INTENDED TO DEPICT THE APPROXIMATE LOCATION OF A PROPOSED PIPELINE EASEMENT.
2. THIS DOCUMENT DOES NOT REPRESENT A LAND SURVEY AND IS NOT INTENDED TO DEPICT THE FINAL ALIGNMENT
3. COORDINATE SYSTEM: UTM ZONE 14 NORTH, NAD83, US SURVEY FEET

PRELIMINARY PIPELINE ROUTE

DRAWN BY:	AC	SUMMIT CARBON SOLUTIONS MIDWEST CARBON EXPRESS DWAYNE HOFER CORPORATION TAX ID: 2611 TRACT NUMBER: SD-SU-320-039.000
CHECKED BY:	JW	
MAP DATE:	12/14/2021	
SCALE:	1 inch = 479'	
REV NO.	DATE	DESCRIPTION
C	5/18/2022	REVISED WORKSPACE
D	7/13/2022	REVISED WORKSPACE
DRAWING NO. C-MCE-ACQ-SD-SU-320-039.000		PROJECT NO. 450959 SHEET NO. 01 of 01

