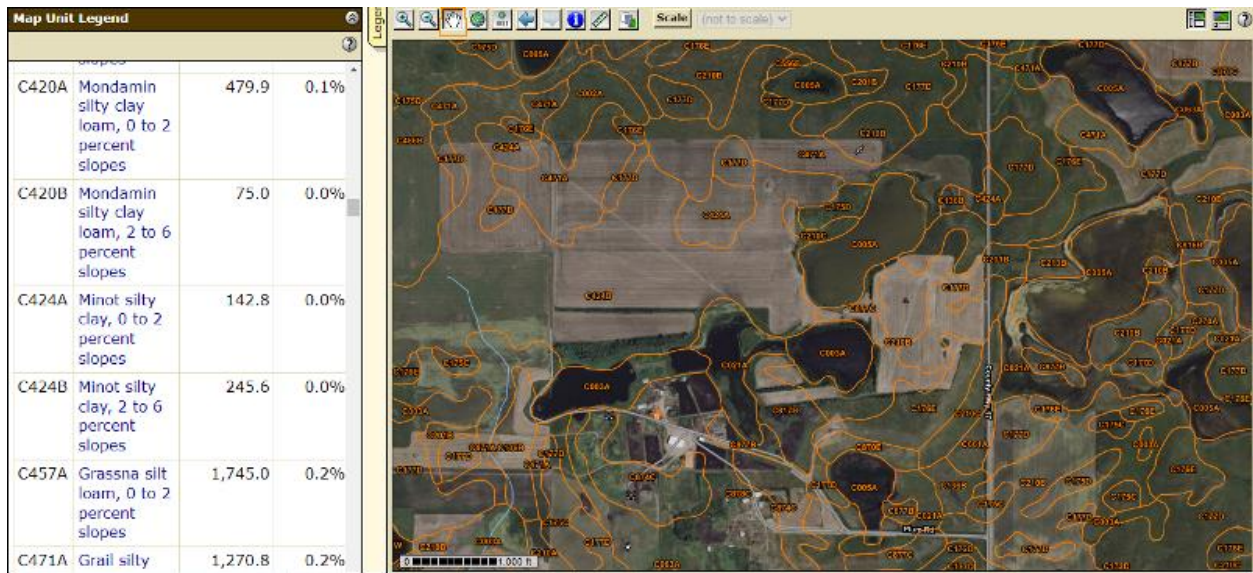


Attachment No. 13



Soil Map

LAND RECLAMATION of the Bison Pipeline

TRANSCANADA'S BISON PIPELINE in
Montana 04/12/2011

Pictures: Bob Zellar – Billing Gazette
Lincoln Star Journal

A cattleguard damaged during installation of the Bison high pressure gas pipeline in southeast Montana 04/12/2011



Blowing and blown soil on Robert Rusley's property on the Bison high pressure gas pipeline right of way in southeast Montana. 10/27/2010

152



10/27/2010 02:54

A pipeline sign lies fallen in a trench left after the soil over the Bison pipeline sunk in spring on Robert Rusley's property in southeast Montana 04/12/2011



One sign has fallen while another leans in the soft soil on the Bison high pressure gas pipeline right of way in southeast Montana 04/12/2011



Janelle Reiger walks on a concrete creek crossing damaged during installation of the Bison high pressure gas pipeline in southeast Montana 04/12/2011



Janelle Reiger stand in a trench left after the soil over the Bison pipeline sunk this spring on Wade Klauzer's property in southeast Montana 04/12/2011



Wade Kllauzer stands by a trench left after the soil over the Bison pipeline sunk this spring on his property in southeast Montana 04/12/2011



A pipeline sign lies fallen in a trench left after the soil over the Bison pipeline
sunk this spring on Robert Rusley's property in southeast Montana
04/12/2011



Water erosion on Wade Klauzer's property on the Bison high pressure gas pipeline right of way in southeast Montana 04/12/2011



Janelle Reiger walks by a trench left after the soil over the Bison pipeline sunk
this spring in southeast Montana 04/12/2011

