

Attachment No. 1

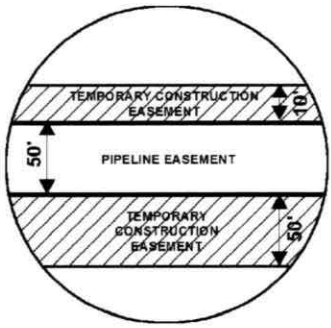
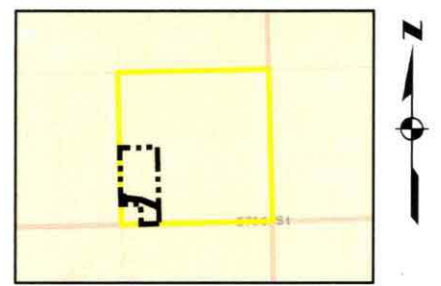


EXHIBIT "B"

PRELIMINARY ROUTE

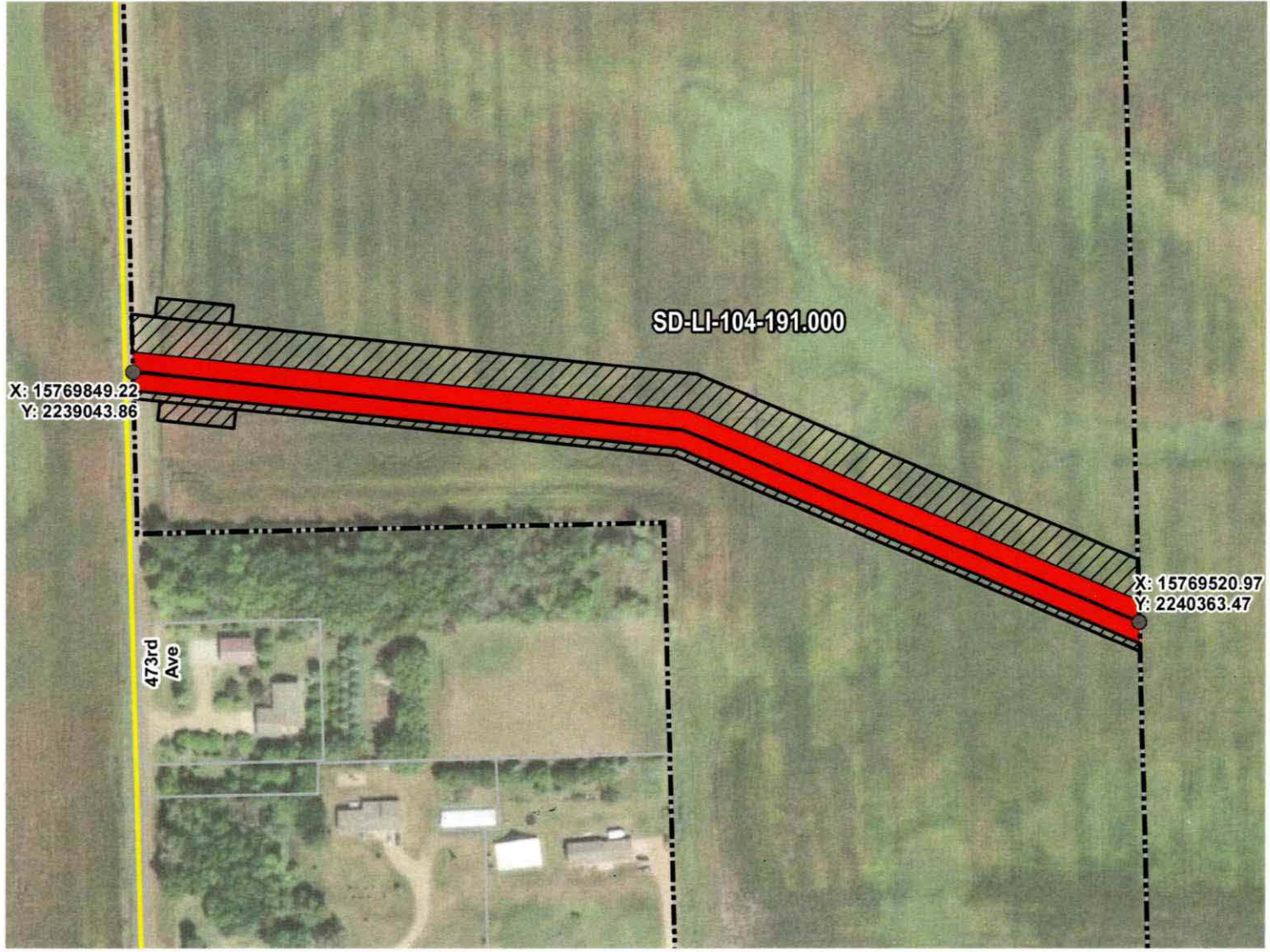
LINCOLN COUNTY, SOUTH DAKOTA

Dakota Aeration, Inc.



VICINITY MAP
N.T.S.

SEC. 15 T099N R50W



ROUTING LENGTH = 1374.473 FT +/-
 IMPACTS: PIPELINE EASEMENT = 1.578 AC. +/- / TEMPORARY CONSTRUCTION EASEMENT = 2.009 AC. +/-

Legend

PROPOSED ROUTE	PIPELINE EASEMENT
PARCEL BOUNDARY	TEMPORARY CONSTRUCTION EASEMENT
ADJACENT PROPERTIES	SECTION BOUNDARY
	COUNTY BOUNDARY

- NOTES:**
1. THIS IS A PRELIMINARY DOCUMENT AND IS INTENDED TO DEPICT THE APPROXIMATE LOCATION OF A PROPOSED PIPELINE EASEMENT.
 2. THIS DOCUMENT DOES NOT REPRESENT A LAND SURVEY AND IS NOT INTENDED TO DEPICT THE FINAL ALIGNMENT
 3. COORDINATE SYSTEM: UTM ZONE 14 NORTH, NAD83, US SURVEY FEET



PRELIMINARY PIPELINE ROUTE		
DRAWN BY:	AC	SUMMIT CARBON SOLUTIONS MIDWEST CARBON EXPRESS DAKOTA AERATION INC TAX ID: 099.50.15.3020 TRACT NUMBER: SD-LI-104-191.000
CHECKED BY:	JW	
MAP DATE:	1/28/2022	
SCALE:	1 inch = 213'	
REV NO.	DATE	DESCRIPTION
A	1/28/2022	INITIAL ISSUE
B	3/6/2022	REVISED ROUTE
DRAWING NO. C-MCE-ACQ-SD-LI-104-191.000		PROJECT NO. 450959
		SHEET NO. 01 of 01

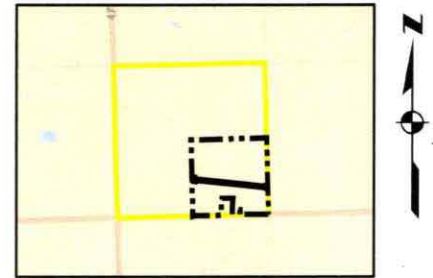
EXHIBIT "B"

PRELIMINARY ROUTE

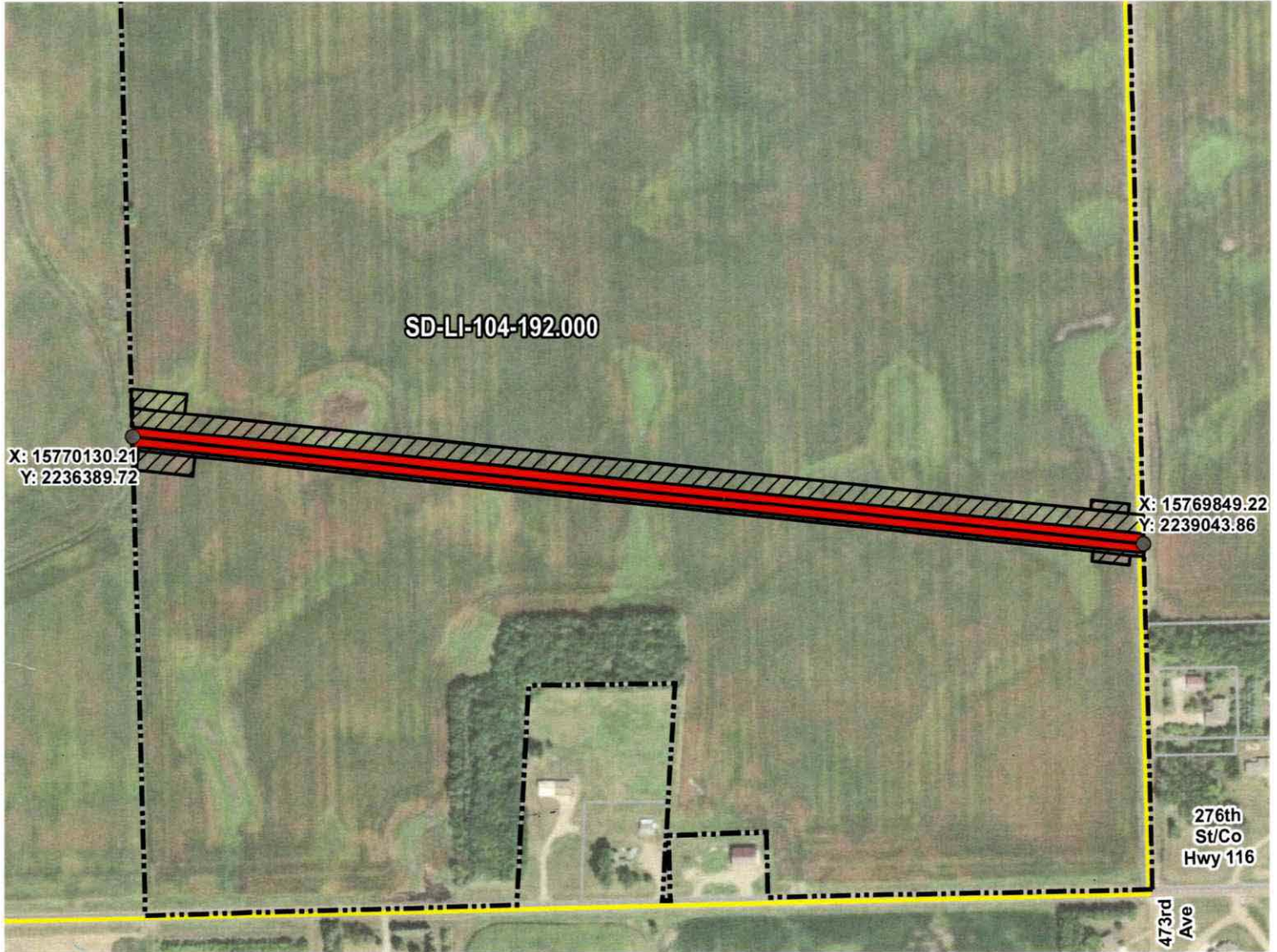
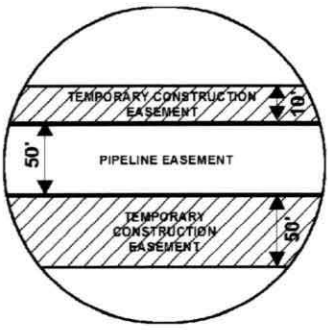
LINCOLN COUNTY, SOUTH DAKOTA

KKKP, Property

SEC. 16 T099N R50W



VICINITY MAP
N.T.S.



ROUTING LENGTH = 2668.97 FT +/-

IMPACTS: PIPELINE EASEMENT = 3.063 AC. +/- / TEMPORARY CONSTRUCTION EASEMENT = 4.125 AC. +/-

Legend

- PROPOSED ROUTE
- PIPELINE EASEMENT
- PARCEL BOUNDARY
- TEMPORARY CONSTRUCTION EASEMENT
- ADJACENT PROPERTIES
- SECTION BOUNDARY
- COUNTY BOUNDARY

NOTES:

1. THIS IS A PRELIMINARY DOCUMENT AND IS INTENDED TO DEPICT THE APPROXIMATE LOCATION OF A PROPOSED PIPELINE EASEMENT.
2. THIS DOCUMENT DOES NOT REPRESENT A LAND SURVEY AND IS NOT INTENDED TO DEPICT THE FINAL ALIGNMENT
3. COORDINATE SYSTEM: UTM ZONE 14 NORTH, NAD83, US SURVEY FEET



PRELIMINARY PIPELINE ROUTE

DRAWN BY: AC		SUMMIT CARBON SOLUTIONS MIDWEST CARBON EXPRESS KKKP PROPERTY LLLP TAX ID: 099.50.16.4000 TRACT NUMBER: SD-LI-104-192.000
CHECKED BY: JW		
MAP DATE: 1/28/2022		
SCALE: 1 inch = 429'		
REV NO.	DATE	DESCRIPTION
A	1/28/2022	INITIAL ISSUE
B	3/6/2022	REVISED ROUTE
DRAWING NO. C-MCE-ACQ-SD-LI-104-192.000		PROJECT NO. 450959
		SHEET NO. 01 of 01

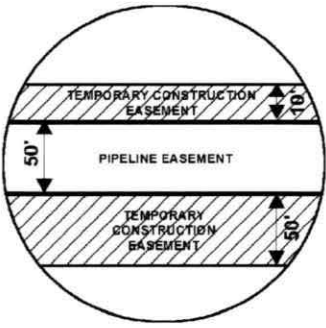
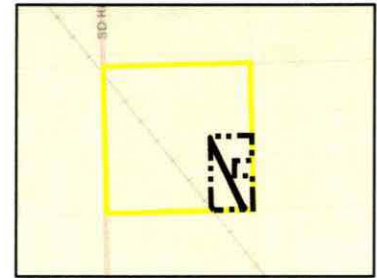


EXHIBIT "B"

PRELIMINARY ROUTE

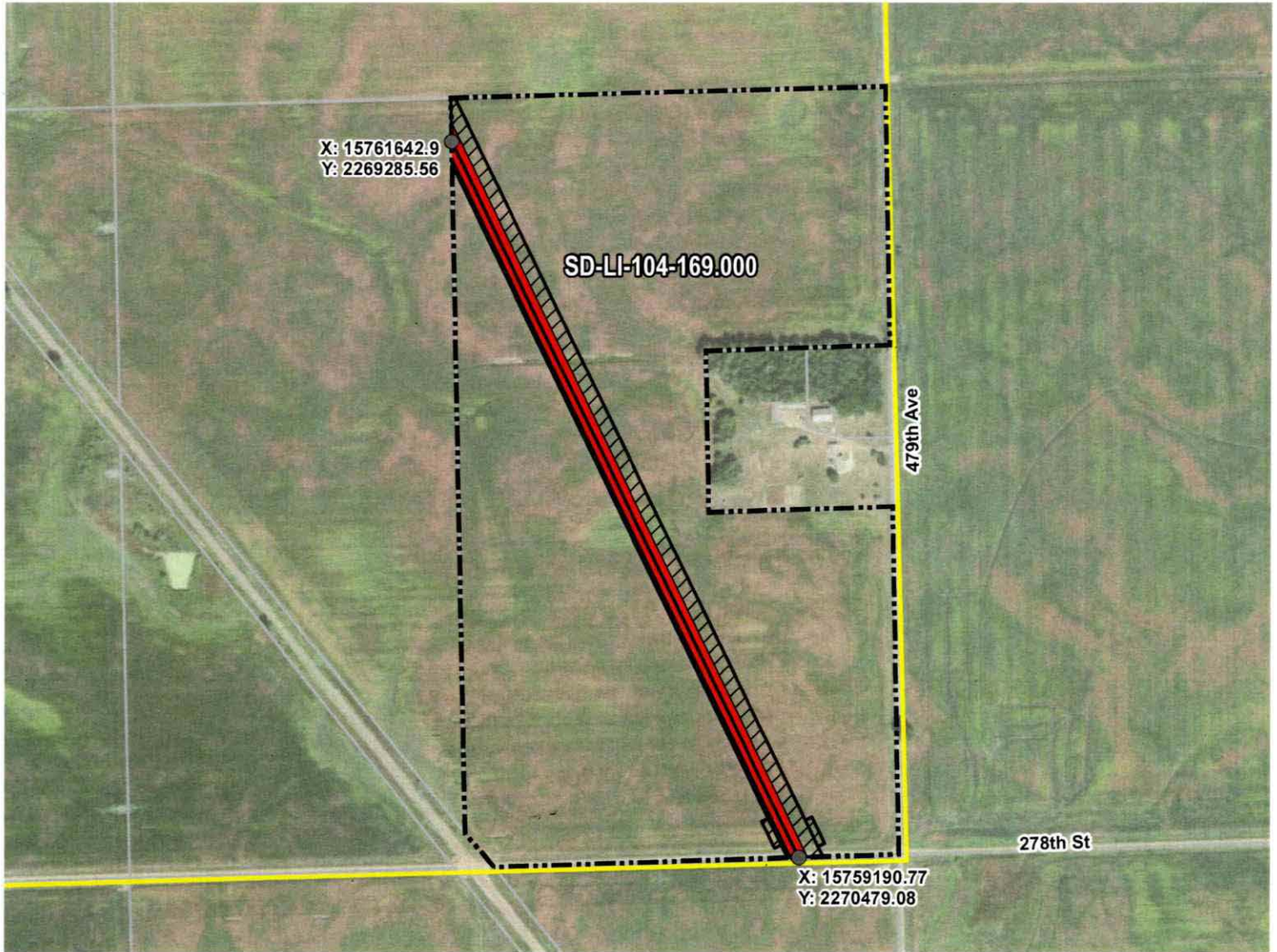
LINCOLN COUNTY, SOUTH DAKOTA

Ped. Ag



VICINITY MAP
N.T.S.

SEC. 28 T099N R49W



ROUTING LENGTH = 2727.166 FT +/-
 IMPACTS: PIPELINE EASEMENT = 3.131 AC. +/- / TEMPORARY CONSTRUCTION EASEMENT = 3.999 AC. +/-

	PROPOSED ROUTE		PIPELINE EASEMENT
	PARCEL BOUNDARY		TEMPORARY CONSTRUCTION EASEMENT
	ADJACENT PROPERTIES		SECTION BOUNDARY
			COUNTY BOUNDARY

NOTES:

1. THIS IS A PRELIMINARY DOCUMENT AND IS INTENDED TO DEPICT THE APPROXIMATE LOCATION OF A PROPOSED PIPELINE EASEMENT.
2. THIS DOCUMENT DOES NOT REPRESENT A LAND SURVEY AND IS NOT INTENDED TO DEPICT THE FINAL ALIGNMENT
3. COORDINATE SYSTEM: UTM ZONE 14 NORTH, NAD83, US SURVEY FEET

PRELIMINARY PIPELINE ROUTE

DRAWN BY: AC		SUMMIT CARBON SOLUTIONS MIDWEST CARBON EXPRESS PEDERSON AG LLC TAX ID: 099.49.28.4010 TRACT NUMBER: SD-LI-104-169.000
CHECKED BY: JW		
MAP DATE: 1/28/2022		
SCALE: 1 inch = 560'		
REV NO.	DATE	DESCRIPTION
A	1/28/2022	INITIAL ISSUE
B	3/6/2022	REVISED ROUTE
DRAWING NO. C-MCE-ACQ-SD-LI-104-169.000		PROJECT NO. 450959
		SHEET NO. 01 of 01



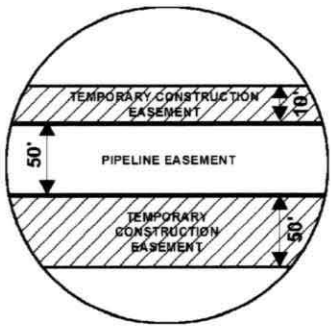
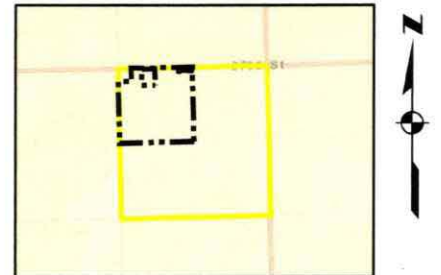


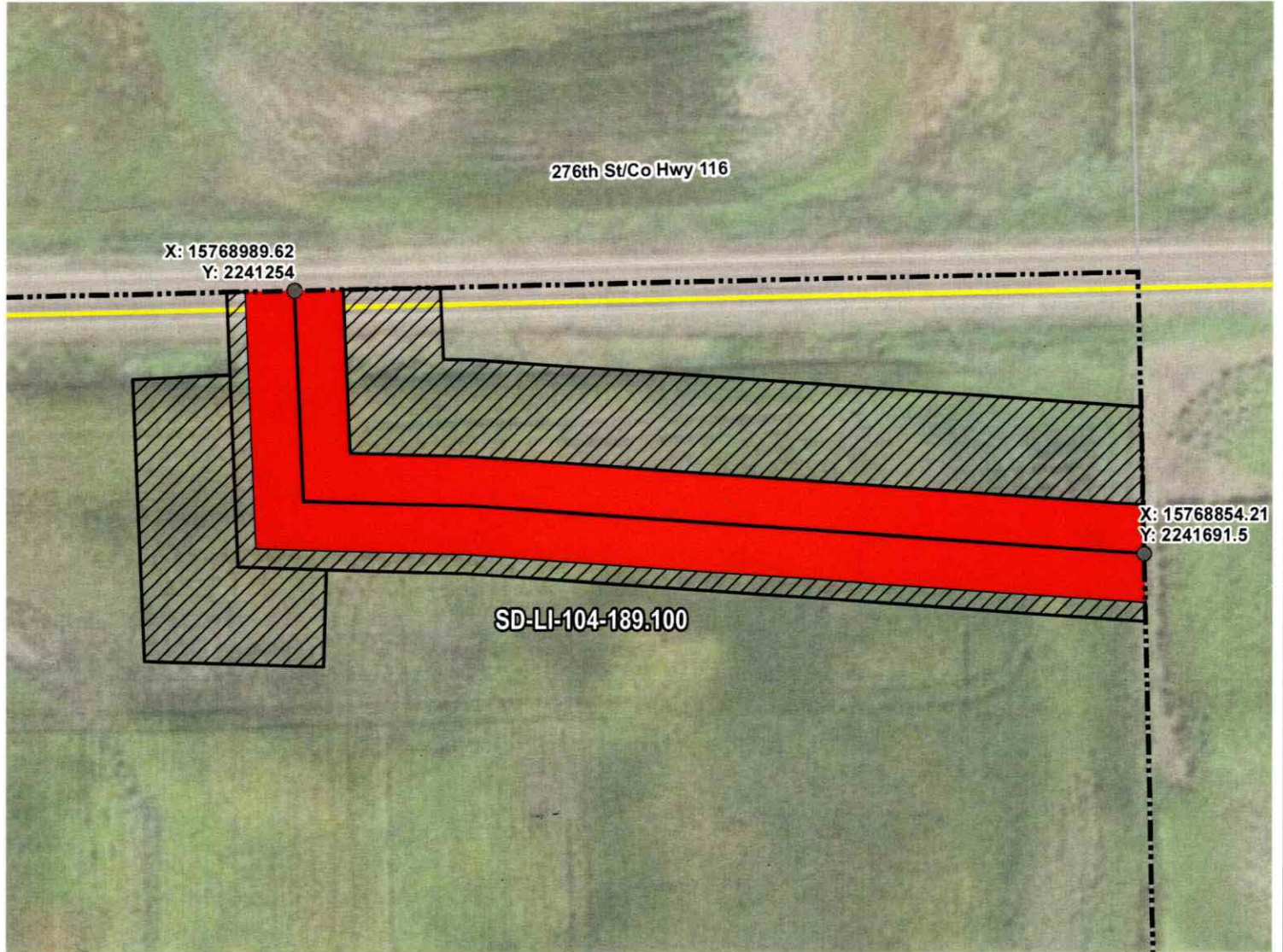
EXHIBIT "B" PRELIMINARY ROUTE LINCOLN COUNTY, SOUTH DAKOTA

Ped. Ag



VICINITY MAP
N.T.S.

SEC. 22 T099N R50W



ROUTING LENGTH = 542.001 FT +/-
IMPACTS: PIPELINE EASEMENT = 0.622 AC. +/- / TEMPORARY CONSTRUCTION EASEMENT = 0.868 AC. +/-

- Legend**
- PROPOSED ROUTE
 - PIPELINE EASEMENT
 - PARCEL BOUNDARY
 - TEMPORARY CONSTRUCTION EASEMENT
 - ADJACENT PROPERTIES
 - SECTION BOUNDARY
 - COUNTY BOUNDARY

NOTES:

1. THIS IS A PRELIMINARY DOCUMENT AND IS INTENDED TO DEPICT THE APPROXIMATE LOCATION OF A PROPOSED PIPELINE EASEMENT.
2. THIS DOCUMENT DOES NOT REPRESENT A LAND SURVEY AND IS NOT INTENDED TO DEPICT THE FINAL ALIGNMENT
3. COORDINATE SYSTEM: UTM ZONE 14 NORTH, NAD83, US SURVEY FEET



PRELIMINARY PIPELINE ROUTE

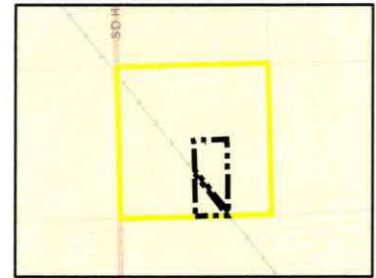
DRAWN BY: AC		SUMMIT CARBON SOLUTIONS MIDWEST CARBON EXPRESS PEDERSON AG LLC
CHECKED BY: JW		
MAP DATE: 1/28/2022		
SCALE: 1 inch = 84'		TAX ID: 099.50.22.2000 TRACT NUMBER: SD-LI-104-189.100
REV NO.	DATE	DESCRIPTION
A	1/28/2022	INITIAL ISSUE
B	3/6/2022	REVISED ROUTE
DRAWING NO. C-MCE-ACQ-SD-LI-104-189.100		PROJECT NO. 450959 SHEET NO. 01 of 01

EXHIBIT "B"

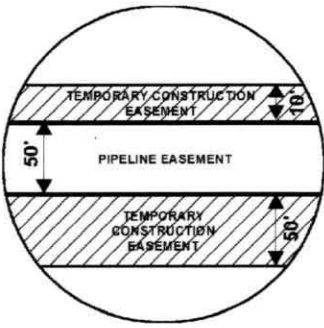
PRELIMINARY ROUTE

LINCOLN COUNTY, SOUTH DAKOTA

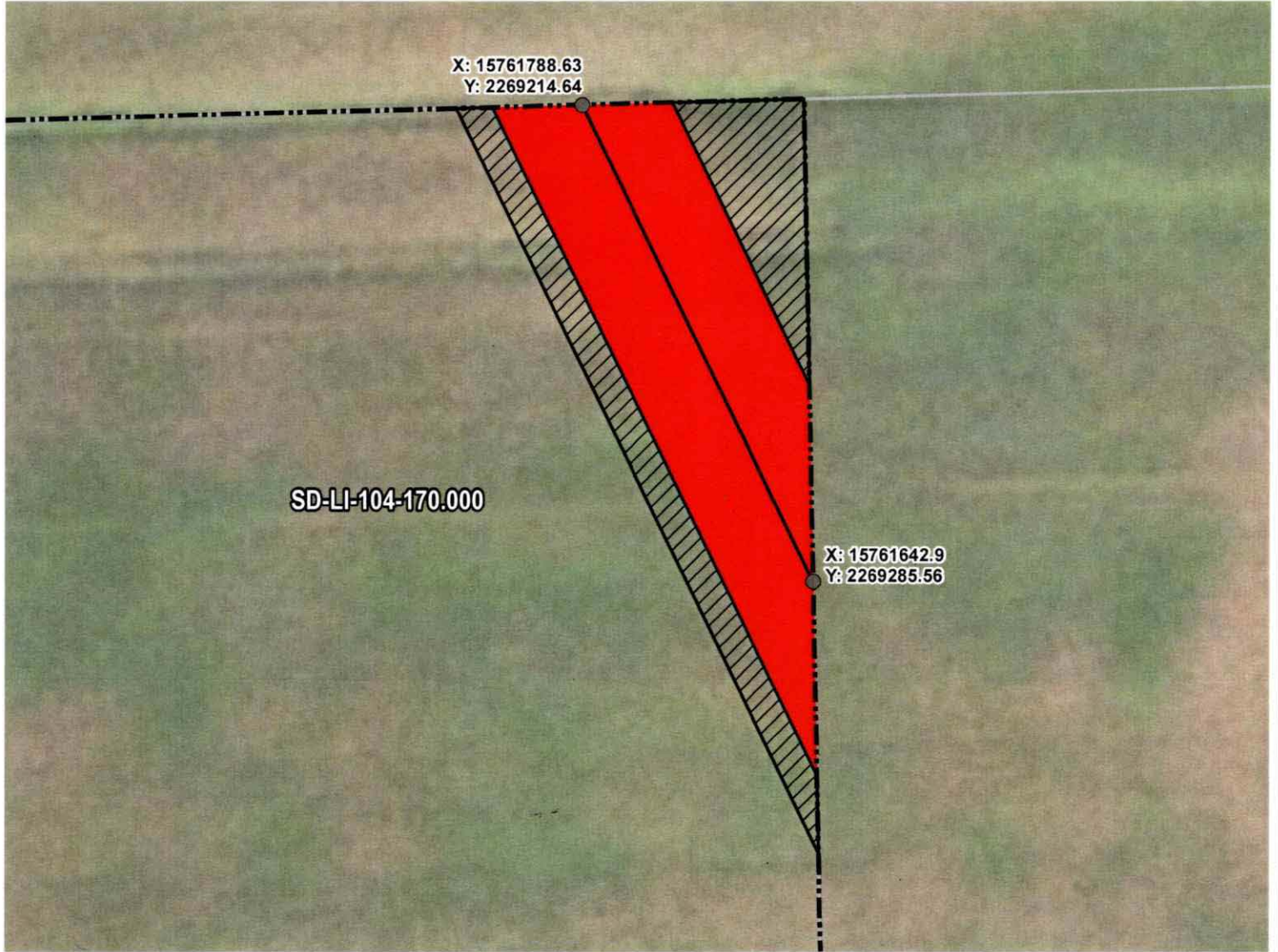
Ped. Ag



VICINITY MAP
N.T.S.



SEC. 28 T099N R49W



ROUTING LENGTH = 162.07 FT +/-

IMPACTS: PIPELINE EASEMENT = 0.186 AC. +/- / TEMPORARY CONSTRUCTION EASEMENT = 0.095 AC. +/-

Legend

- PROPOSED ROUTE
- PIPELINE EASEMENT
- PARCEL BOUNDARY
- TEMPORARY CONSTRUCTION EASEMENT
- ADJACENT PROPERTIES
- SECTION BOUNDARY
- COUNTY BOUNDARY

NOTES:

1. THIS IS A PRELIMINARY DOCUMENT AND IS INTENDED TO DEPICT THE APPROXIMATE LOCATION OF A PROPOSED PIPELINE EASEMENT.
2. THIS DOCUMENT DOES NOT REPRESENT A LAND SURVEY AND IS NOT INTENDED TO DEPICT THE FINAL ALIGNMENT
3. COORDINATE SYSTEM: UTM ZONE 14 NORTH, NAD83, US SURVEY FEET

PRELIMINARY PIPELINE ROUTE

DRAWN BY: AC		SUMMIT CARBON SOLUTIONS MIDWEST CARBON EXPRESS PEDERSON AG LLC TAX ID: 099.49.28.4020 TRACT NUMBER: SD-LI-104-170.000
CHECKED BY: JW		
MAP DATE: 1/28/2022		
SCALE: 1 inch = 50'		
REV NO.	DATE	DESCRIPTION
A	1/28/2022	INITIAL ISSUE
B	3/6/2022	REVISED ROUTE
DRAWING NO. C-MCE-ACQ-SD-LI-104-170.000		PROJECT NO. 450959
		SHEET NO. 01 of 01

