

Attachment No. 13

LAND RECLAMATION of the Bison Pipeline

TRANSCANADA'S BISON PIPELINE in
Montana 04/12/2011

Pictures: Bob Zellar – Billing Gazette
Lincoln Star Journal

A cattleguard damaged during installation of the Bison high pressure gas pipeline in southeast Montana 04/12/2011



Blowing and blown soil on Robert Rusley's property on the Bison high pressure gas pipeline right of way in southeast Montana. 10/27/2010

152



10/27/2010 02:54

A pipeline sign lies fallen in a trench left after the soil over the Bison pipeline sunk in spring on Robert Rusley's property in southeast Montana 04/12/2011



One sign has fallen while another leans in the soft soil on the Bison high pressure gas pipeline right of way in southeast Montana 04/12/2011



Janelle Reiger walks on a concrete creek crossing damaged during installation of the Bison high pressure gas pipeline in southeast Montana 04/12/2011



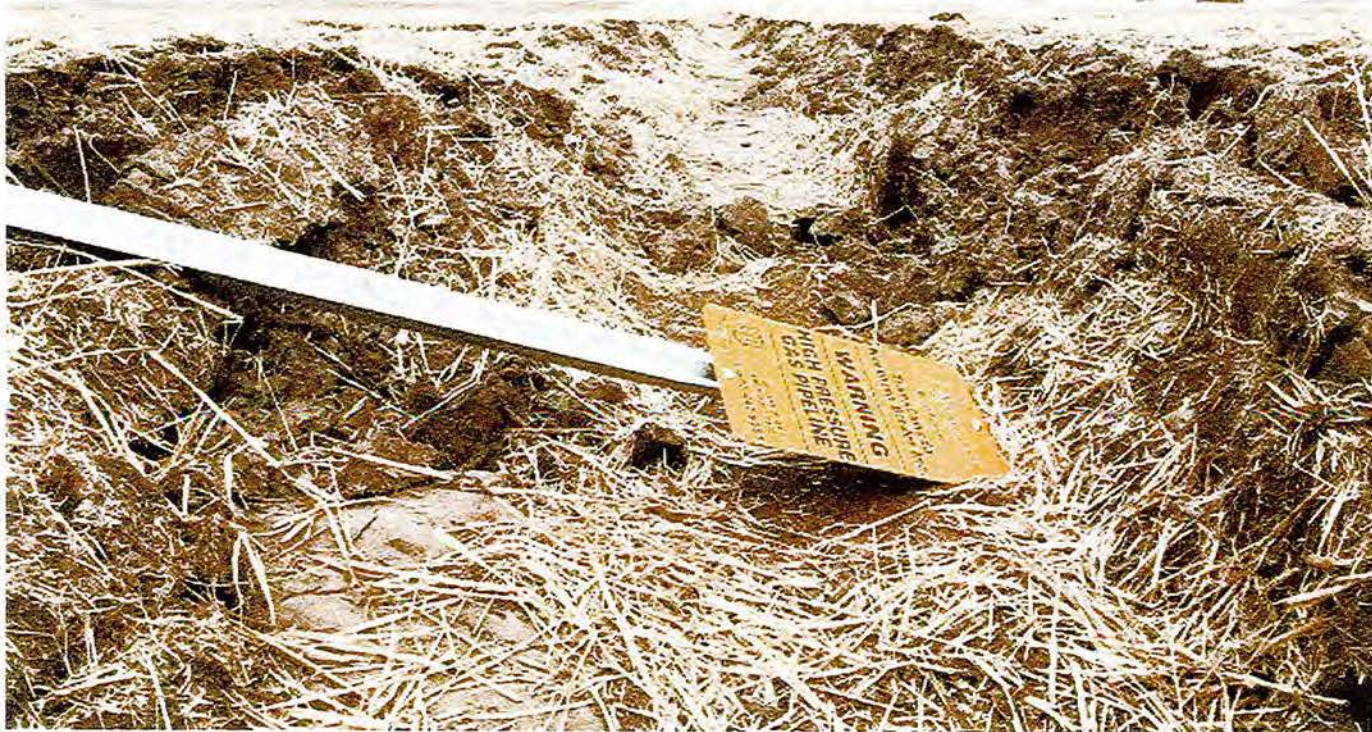
Janelle Reiger stand in a trench left after the soil over the Bison pipeline sunk this spring on Wade Klauzer's property in southeast Montana 04/12/2011



Wade Kllauzer stands by a trench left after the soil over the Bison pipeline sunk this spring on his property in southeast Montana 04/12/2011



A pipeline sign lies fallen in a trench left after the soil over the Bison pipeline
sunk this spring on Robert Rusley's property in southeast Montana
04/12/2011



Water erosion on Wade Klauzer's property on the Bison high pressure gas pipeline right of way in southeast Montana 04/12/2011

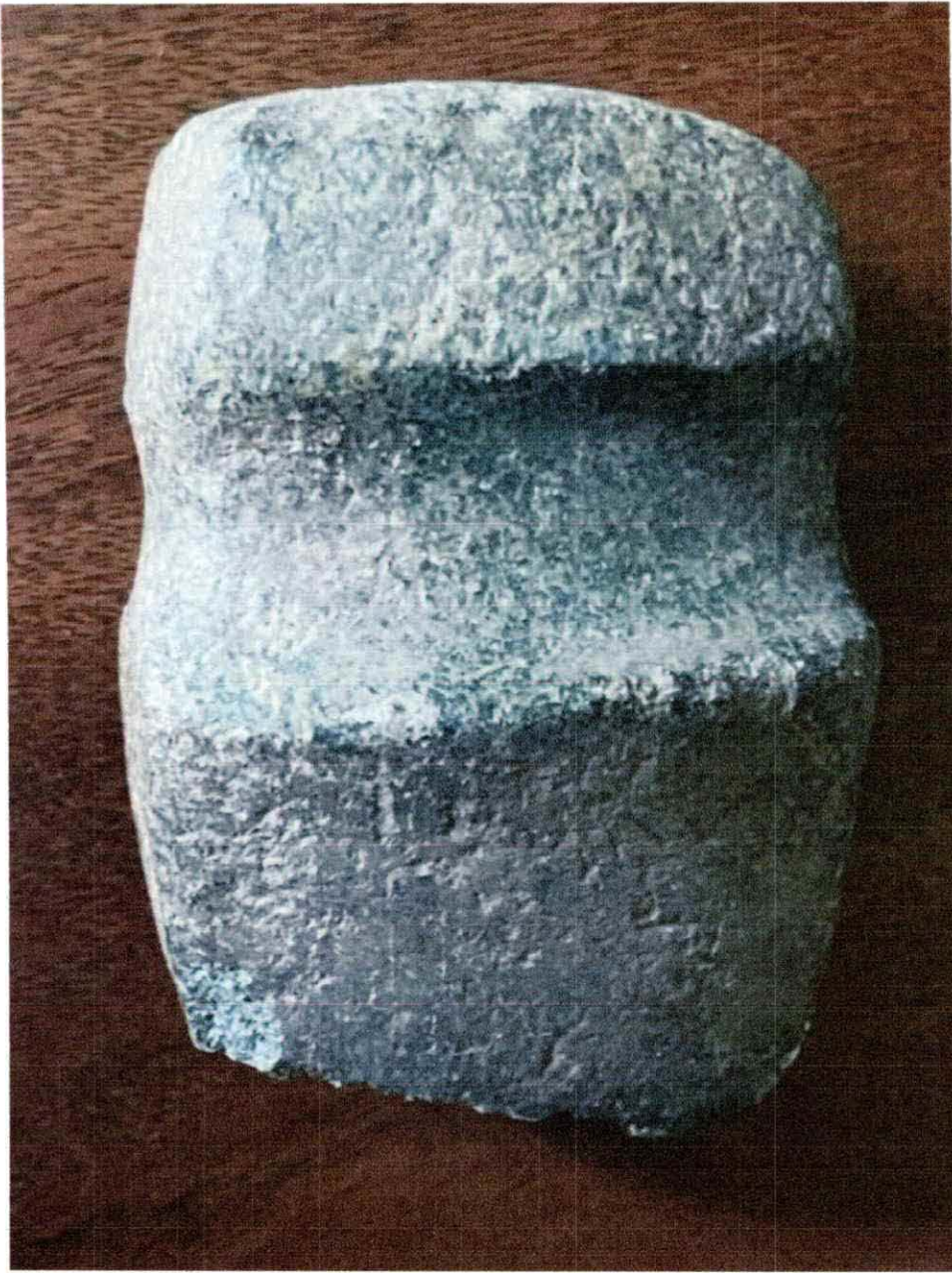


Janelle Reiger walks by a trench left after the soil over the Bison pipeline sunk
this spring in southeast Montana 04/12/2011





Example 1a



Example # 1b,



This is a picture of the road used to access our farm land. There are deep ditches on both sides of it. This road runs parallel to our farm land. Why can't this county owned land be used for the pipeline rather than ^{destroying} valuable farmland.