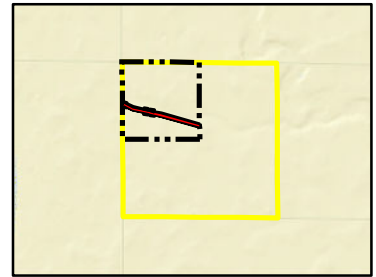


Attachment No. 1

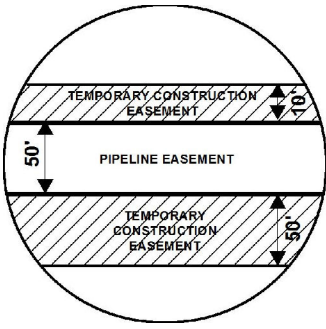
EXHIBIT "B"

PRELIMINARY ROUTE

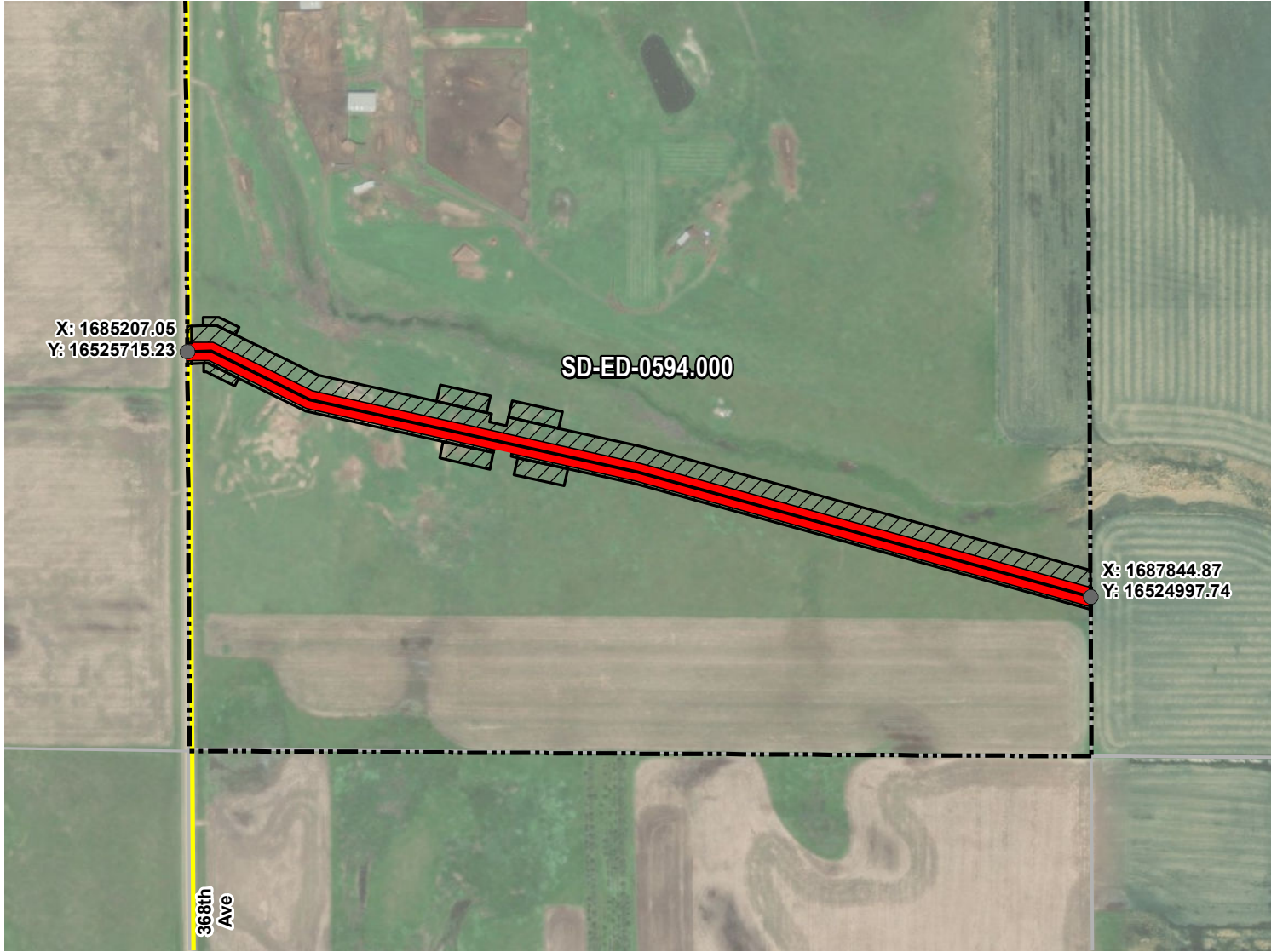
EDMUNDS COUNTY, SOUTH DAKOTA



VICINITY MAP
N.T.S.



SEC. 08 T123N R66W



ROUTING LENGTH = 2743.187 FT +/-
IMPACTS: PIPELINE EASEMENT = 3.149 AC. +/- / TEMPORARY CONSTRUCTION EASEMENT = 4.548 AC. +/-

PROPOSED ROUTE	PIPELINE EASEMENT
PARCEL BOUNDARY	TEMPORARY CONSTRUCTION EASEMENT
ADJACENT PROPERTIES	SECTION BOUNDARY
	COUNTY BOUNDARY

NOTES:

1. THIS IS A PRELIMINARY DOCUMENT AND IS INTENDED TO DEPICT THE APPROXIMATE LOCATION OF A PROPOSED PIPELINE EASEMENT.
2. THIS DOCUMENT DOES NOT REPRESENT A LAND SURVEY AND IS NOT INTENDED TO DEPICT THE FINAL ALIGNMENT
3. COORDINATE SYSTEM: UTM ZONE 14 NORTH, NAD83, US SURVEY FEET

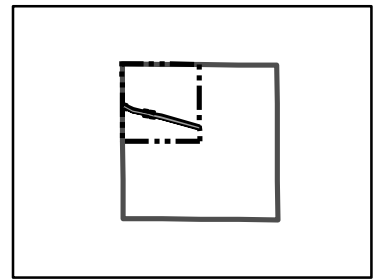
PRELIMINARY PIPELINE ROUTE

DRAWN BY:	AC	SUMMIT CARBON SOLUTIONS MIDWEST CARBON EXPRESS JOHN JUNG TAX ID: 2795 TRACT NUMBER: SD-ED-0594.000
CHECKED BY:	JW	
MAP DATE:	12/1/2021	
SCALE:	1 inch = 478'	
REV NO.	DATE	DESCRIPTION
C	7/5/2022	REVISED WORKSPACE
D	7/20/2022	REVISED WORKSPACE
DRAWING NO.	PROJECT NO.	SHEET NO.
C-MCE-ACQ-SD-ED-0594.000	450959	01 of 01

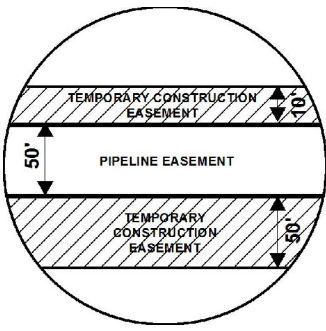
EXHIBIT "B"

PRELIMINARY ROUTE

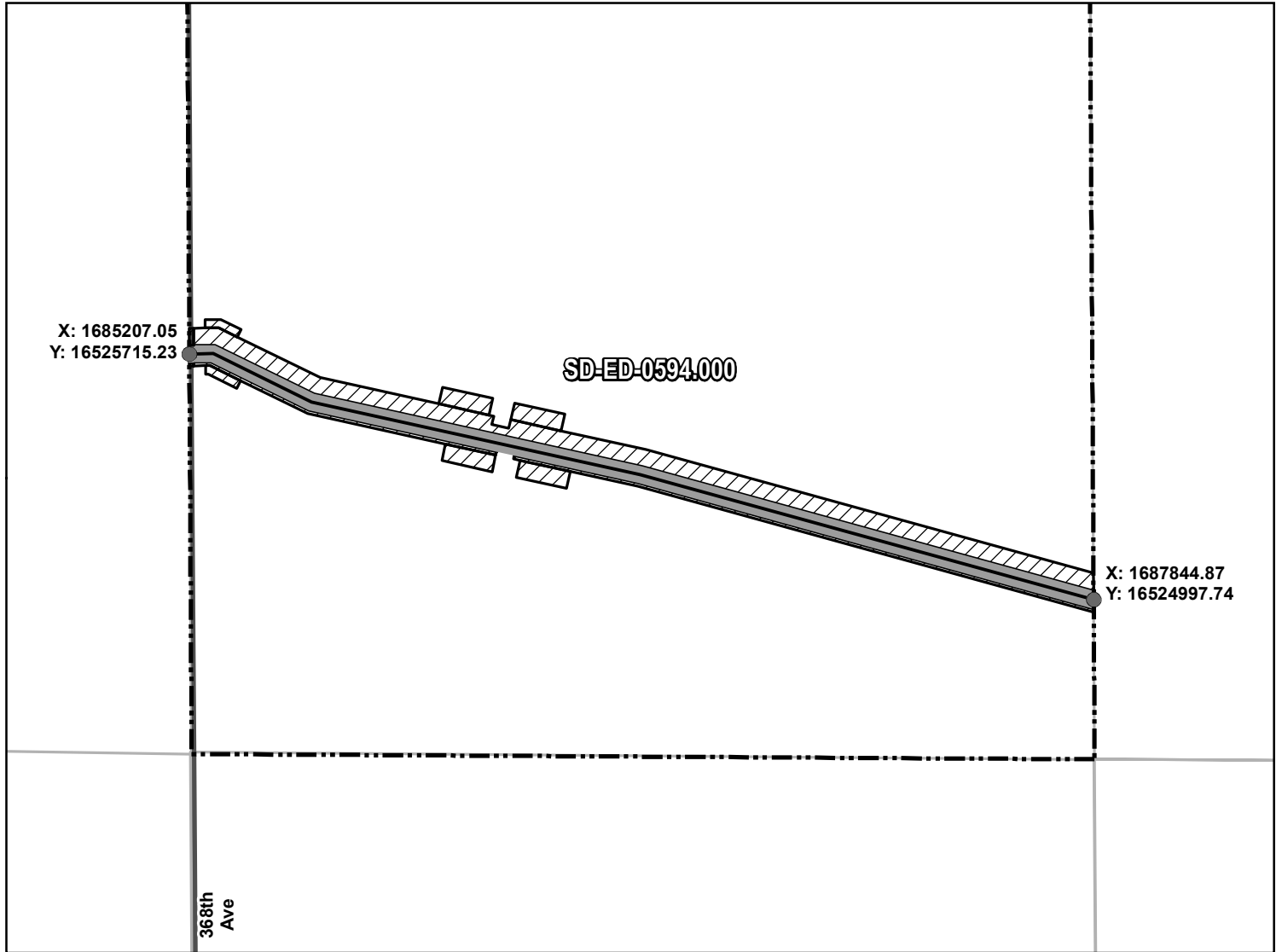
EDMUNDS COUNTY, SOUTH DAKOTA



VICINITY MAP
N.T.S.



SEC. 08 T123N R66W



ROUTING LENGTH = 2743.187 FT +/-
IMPACTS: PIPELINE EASEMENT = 3.149 AC. +/- / TEMPORARY CONSTRUCTION EASEMENT = 4.548 AC. +/-

PROPOSED ROUTE	PIPELINE EASEMENT
ROADS	TEMPORARY CONSTRUCTION EASEMENT
PARCEL BOUNDARY	SECTION BOUNDARY
ADJACENT PROPERTIES	COUNTY BOUNDARY

NOTES:

1. THIS IS A PRELIMINARY DOCUMENT AND IS INTENDED TO DEPICT THE APPROXIMATE LOCATION OF A PROPOSED PIPELINE EASEMENT.
2. THIS DOCUMENT DOES NOT REPRESENT A LAND SURVEY AND IS NOT INTENDED TO DEPICT THE FINAL ALIGNMENT
3. COORDINATE SYSTEM: UTM ZONE 14 NORTH, NAD83, US SURVEY FEET

SIGNATURE: _____ DATE: _____



SUMMIT CARBON SOLUTIONS

PRELIMINARY PIPELINE ROUTE		
DRAWN BY:	AC	SUMMIT CARBON SOLUTIONS MIDWEST CARBON EXPRESS JOHN JUNG TAX ID: 2795 TRACT NUMBER: SD-ED-0594.000
CHECKED BY:	JW	
MAP DATE:	12/1/2021	
SCALE:	1 inch = 478'	
REV NO.	DATE	DESCRIPTION
C	7/5/2022	REVISED WORKSPACE
D	7/20/2022	REVISED WORKSPACE
DRAWING NO. BW-MCE-ACQ-SD-ED-0594.000		PROJECT NO. 450959
		SHEET NO. 01 of 01