

Attachment No. 1

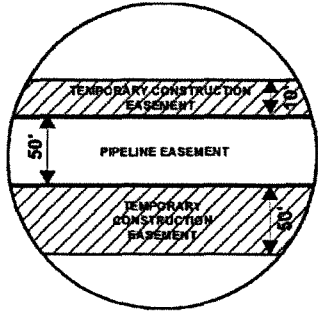
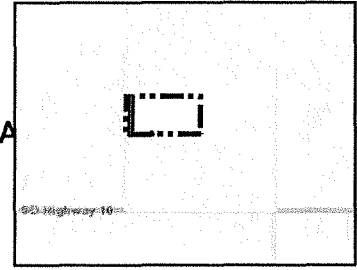


EXHIBIT "B"

PRELIMINARY ROUTE

MCPHERSON COUNTY, SOUTH DAKOTA



VICINITY MAP
N.T.S.

SEC. 16 T126N R68W



ROUTING LENGTH = 1321.844 FT +/-

IMPACTS: PIPELINE EASEMENT = 1.517 AC. +/- / TEMPORARY CONSTRUCTION EASEMENT = 1.927 AC. +/-

Legend

- PROPOSED ROUTE
- PIPELINE EASEMENT
- PARCEL BOUNDARY
- TEMPORARY CONSTRUCTION EASEMENT
- ADJACENT PROPERTIES
- SECTION BOUNDARY
- COUNTY BOUNDARY

NOTES:

1. THIS IS A PRELIMINARY DOCUMENT AND IS INTENDED TO DEPICT THE APPROXIMATE LOCATION OF A PROPOSED PIPELINE EASEMENT.
2. THIS DOCUMENT DOES NOT REPRESENT A LAND SURVEY AND IS NOT INTENDED TO DEPICT THE FINAL ALIGNMENT
3. COORDINATE SYSTEM: UTM ZONE 14 NORTH, NAD83, US SURVEY FEET



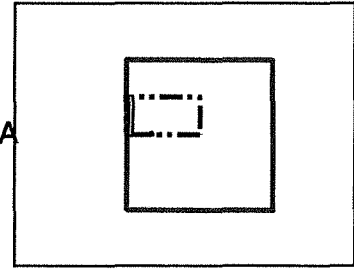
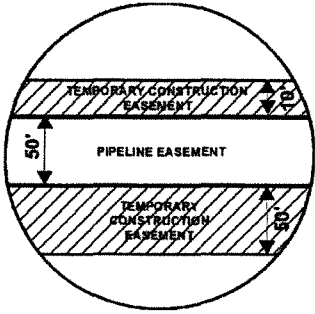
PRELIMINARY PIPELINE ROUTE

DRAWN BY: AC		SUMMIT CARBON SOLUTIONS MIDWEST CARBON EXPRESS JEROME G. HOFFMAN TAX ID: 1185 TRACT NUMBER: SD-MP-0653.100
CHECKED BY: JW		
MAP DATE: 3/8/2022		
SCALE: 1 inch = 319'		
REV NO.	DATE	DESCRIPTION
A	3/8/2022	INITIAL ISSUE
B	8/19/2022	REVISED WORKSPACE
DRAWING NO. C-MCE-ACQ-SD-MP-0653.100		PROJECT NO. 450959
		SHEET NO. 01 of 01

EXHIBIT "B"

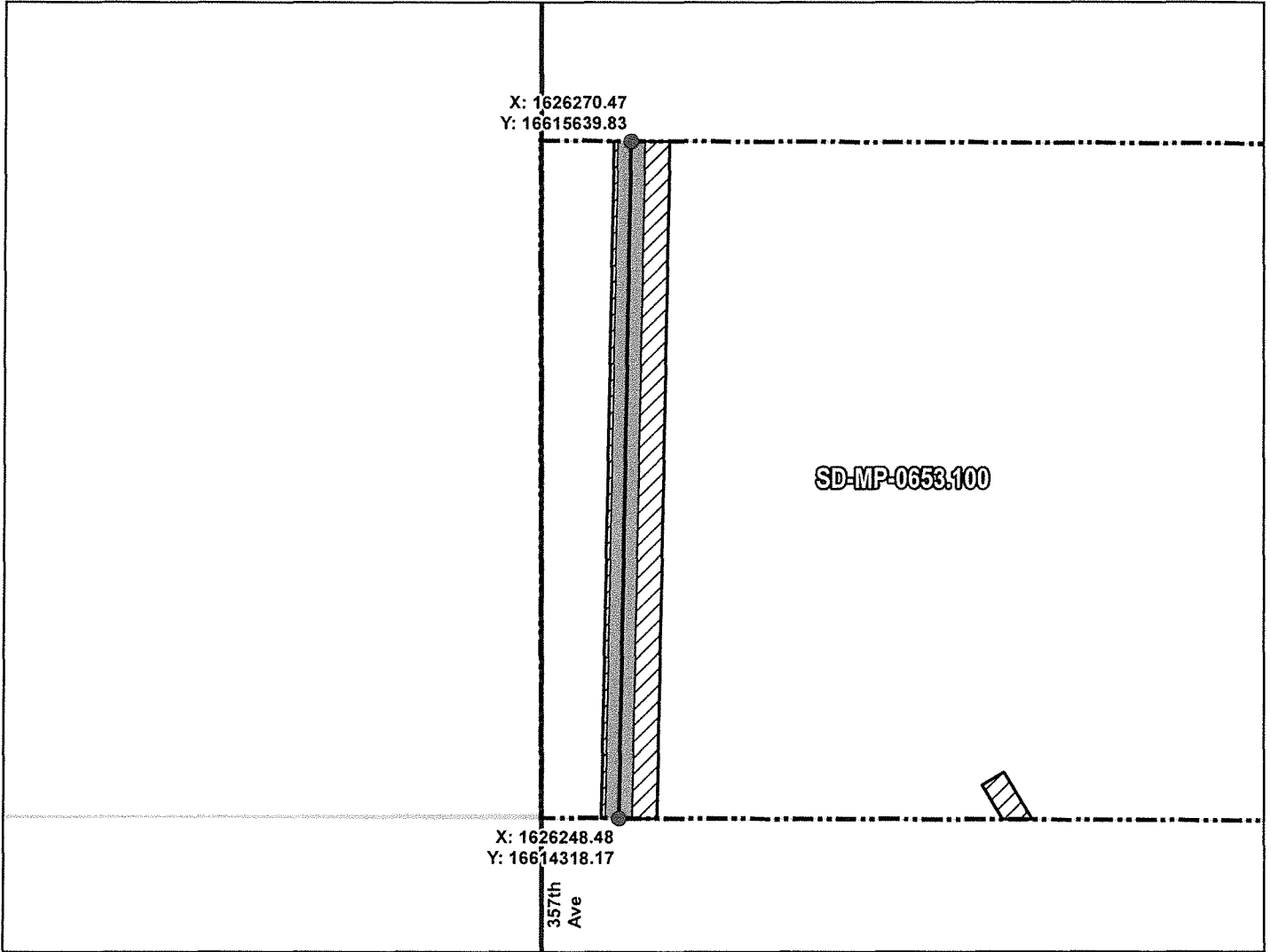
PRELIMINARY ROUTE

MCPHERSON COUNTY, SOUTH DAKOTA



VICINITY MAP
N.T.S.

SEC. 16 T126N R68W



ROUTING LENGTH = 1321.844 FT +/-

IMPACTS: PIPELINE EASEMENT = 1.517 AC. +/- / TEMPORARY CONSTRUCTION EASEMENT = 1.927 AC. +/-

Legend

- PROPOSED ROUTE
- ROADS
- ▭ PARCEL BOUNDARY
- ▭ ADJACENT PROPERTIES
- ▨ PIPELINE EASEMENT
- ▨ TEMPORARY CONSTRUCTION EASEMENT
- ▭ SECTION BOUNDARY
- ▭ COUNTY BOUNDARY

NOTES:

1. THIS IS A PRELIMINARY DOCUMENT AND IS INTENDED TO DEPICT THE APPROXIMATE LOCATION OF A PROPOSED PIPELINE EASEMENT.
2. THIS DOCUMENT DOES NOT REPRESENT A LAND SURVEY AND IS NOT INTENDED TO DEPICT THE FINAL ALIGNMENT
3. COORDINATE SYSTEM: UTM ZONE 14 NORTH, NAD83, US SURVEY FEET

SIGNATURE: _____ DATE: _____



PRELIMINARY PIPELINE ROUTE

DRAWN BY: AC		SUMMIT CARBON SOLUTIONS MIDWEST CARBON EXPRESS JEROME G. HOFFMAN TAX ID: 1185 TRACT NUMBER: SD-MP-0653.100
CHECKED BY: JW		
MAP DATE: 3/8/2022		
SCALE: 1 inch = 319'		
REV NO.	DATE	DESCRIPTION
A	3/8/2022	INITIAL ISSUE
B	8/19/2022	REVISED WORKSPACE
DRAWING NO. BW-MCE-ACQ-SD-MP-0653.100		PROJECT NO. 450959
		SHEET NO. 01 of 01

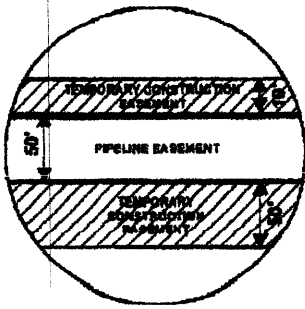
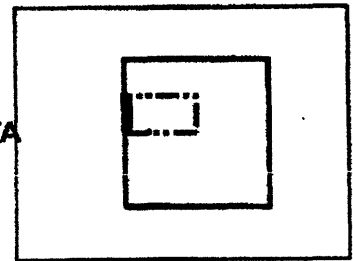


EXHIBIT "B"

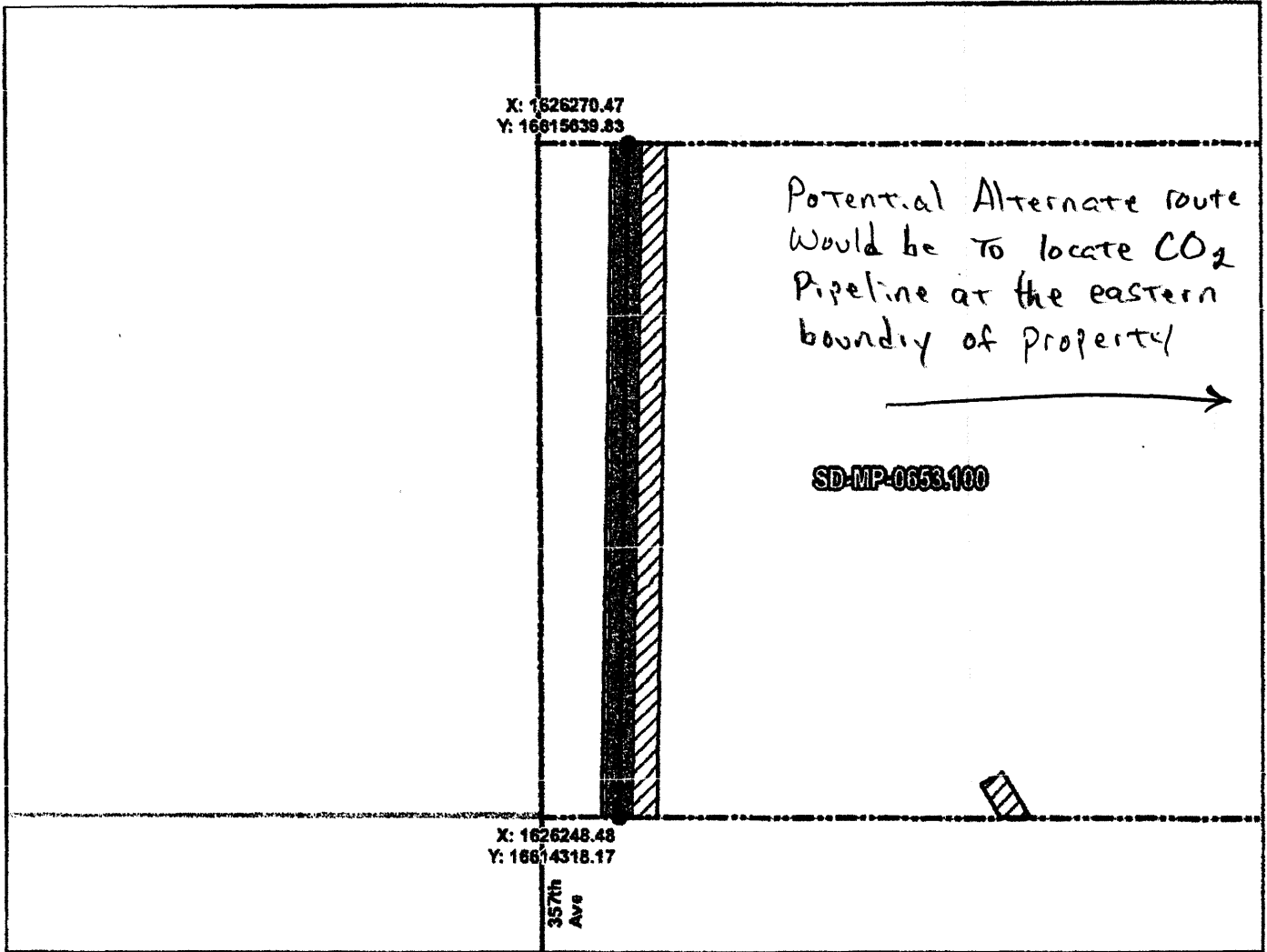
PRELIMINARY ROUTE

MCPHERSON COUNTY, SOUTH DAKOTA



VICINITY MAP
N.T.S.

SEC. 16 T126N R68W



ROUTING LENGTH = 1321.844 FT +/-

IMPACTS: PIPELINE EASEMENT = 1.517 AC. +/- / TEMPORARY CONSTRUCTION EASEMENT = 1.827 AC. +/-

Legend

- PROPOSED ROUTE
- ROADS
- ▭ PARCEL BOUNDARY
- ▭ ADJACENT PROPERTIES
- ▨ PIPELINE EASEMENT
- ▨ TEMPORARY CONSTRUCTION EASEMENT
- ▭ SECTION BOUNDARY
- ▭ COUNTY BOUNDARY

NOTES:

1. THIS IS A PRELIMINARY DOCUMENT AND IS INTENDED TO DEPICT THE APPROXIMATE LOCATION OF A PROPOSED PIPELINE EASEMENT.
2. THIS DOCUMENT DOES NOT REPRESENT A LAND SURVEY AND IS NOT INTENDED TO DEPICT THE FINAL ALIGNMENT
3. COORDINATE SYSTEM: UTM ZONE 14 NORTH, NAD83, US SURVEY FEET

SIGNATURE: _____ DATE: _____

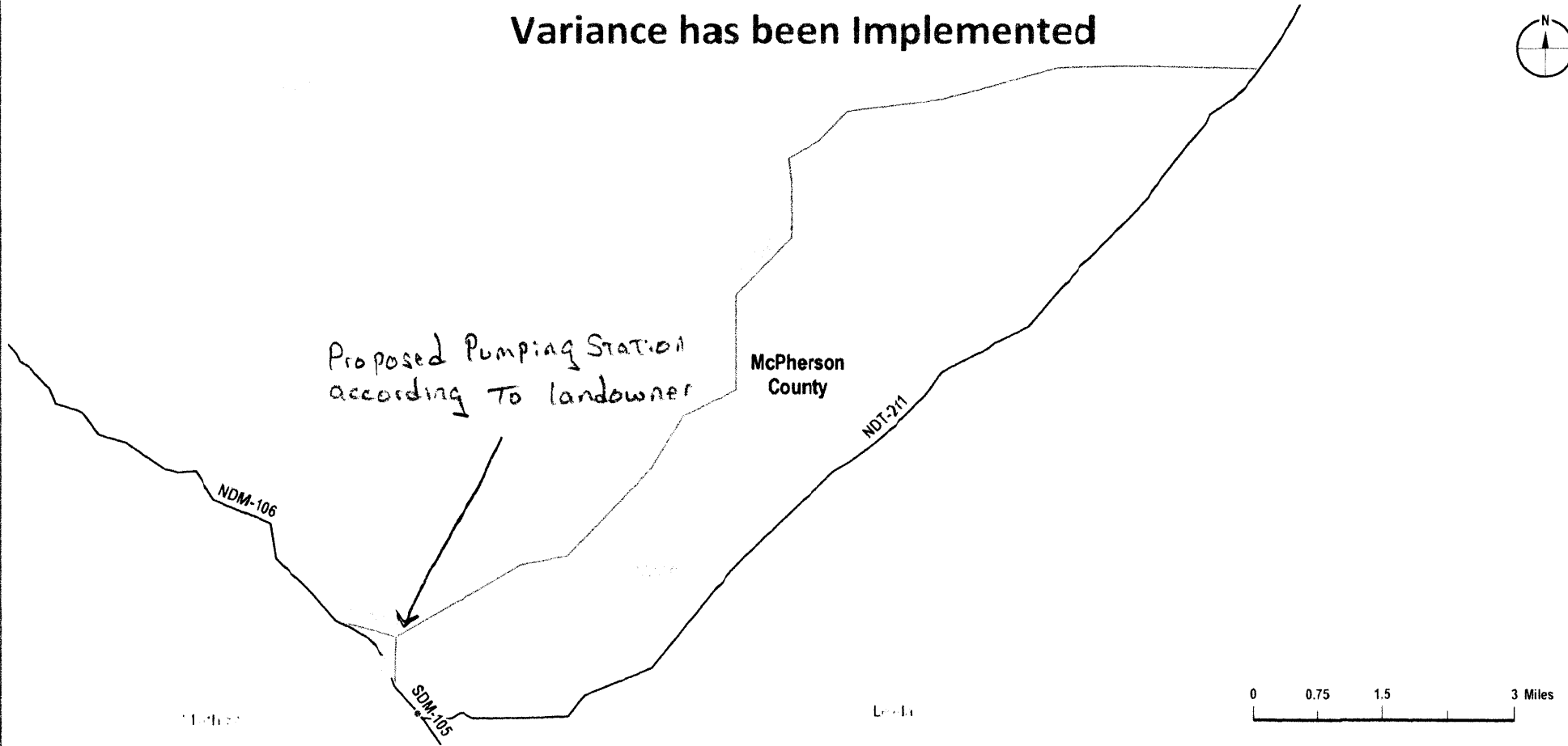


SUMMIT CARBON SOLUTIONS

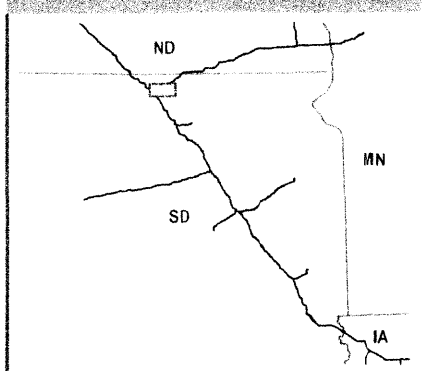
PRELIMINARY PIPELINE ROUTE

DRAWN BY: AC		SUMMIT CARBON SOLUTIONS MIDWEST CARBON EXPRESS JEROME G. HOFFMAN TAX ID: 1185 TRACT NUMBER: SD-MP-0653.100
CHECKED BY: JW		
MAP DATE: 3/8/2022		
SCALE: 1 inch = 319'		
REV NO.	DATE	DESCRIPTION
A	3/8/2022	INITIAL ISSUE
B	8/19/2022	REVISED WORKSPACE
DRAWING NO. BW-MCE-ACC-SD-MP-0653.100		PROJECT NO. 450959 SHEET NO. 01 of 01

Variance has been Implemented



VICINITY MAP




LEGEND

- Proposed Project Route
 - Alternative Under Active Consideration
 - Pump Station
- Layout and Corridor Yards are approximate locations and subject to change.
- Pipeline Naming Convention
 [State Abbreviation][Line Designator] [Line Number]
 (e.g. SD-107)
 State Abbreviation: Iowa (IA), Minnesota (MN), North Dakota (ND), South Dakota (SD)
 Line Designator: Lateral (L), Main (M), Trunk (T)
 Line Number: 3-digit series

PREPARED BY

Summit Carbon Solutions
 2321 North Loop Drive, Suite 271
 Ames, Iowa 50016
 United States of America
www.summitcarbon.com



REVISIONS

Date	Revised by	Checked by
02/24/2017	GS	PD
0 - Issued for SDPUC Application		
Date	Revised by	Checked by

MIDWEST CARBON EXPRESS PROJECT

Figure Title
Alternatives Under Active Consideration

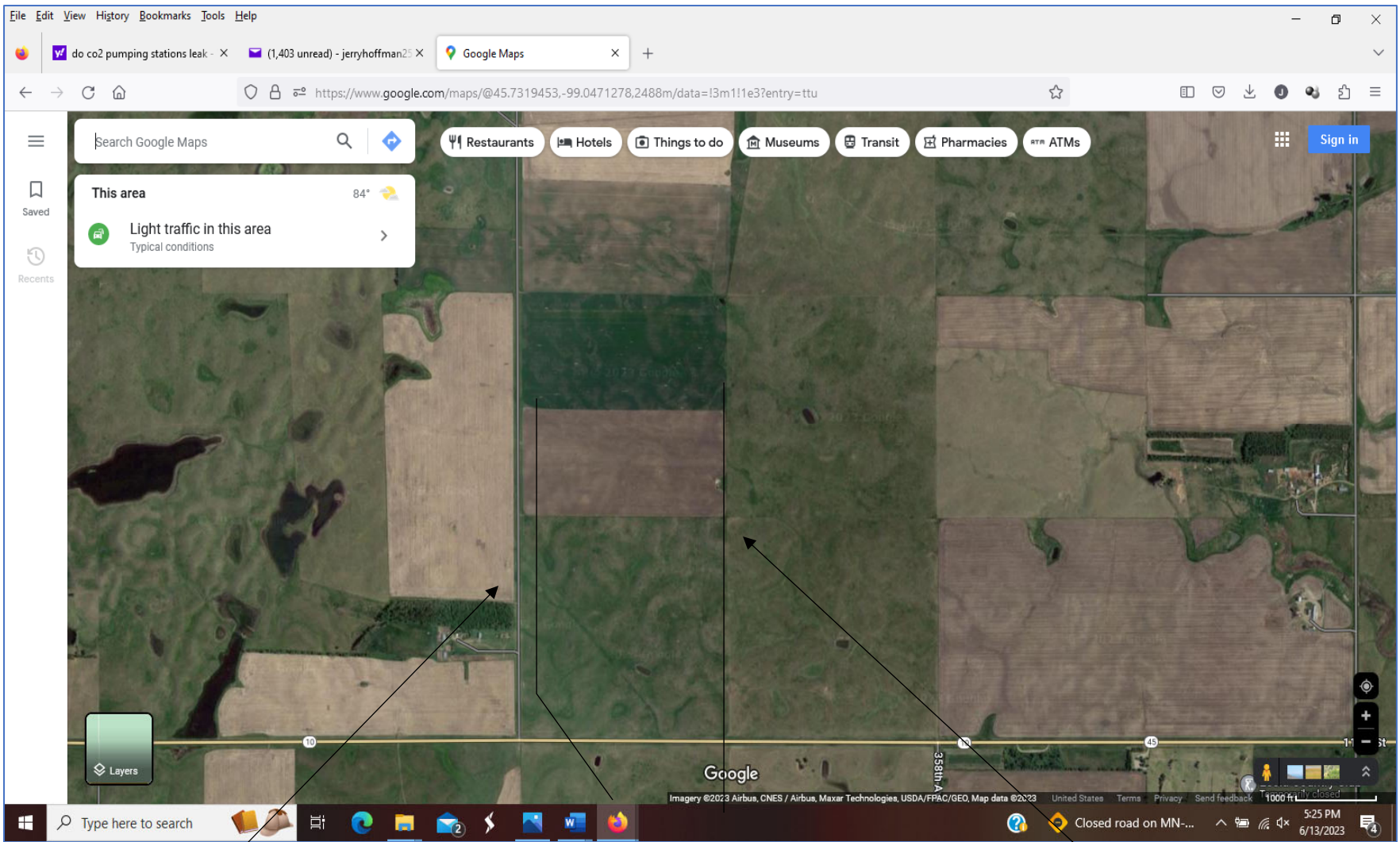
Figure Number
Figure 4-11

Scale
1 : 111,000
 1 inch equals 1.75 miles

Projection
Transverse Mercator
 NAD 1983 UTM Zone 14N

Sheet
7
 7 of 7

Drawing Number
1002-06-002
 Revision: 0



Proposed Summit CO2 pipeline filed with the SD PUC

Recommended alternate CO2 pipeline route