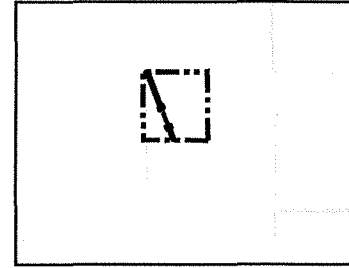
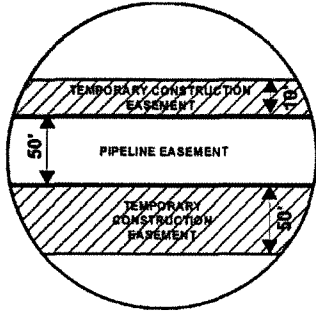


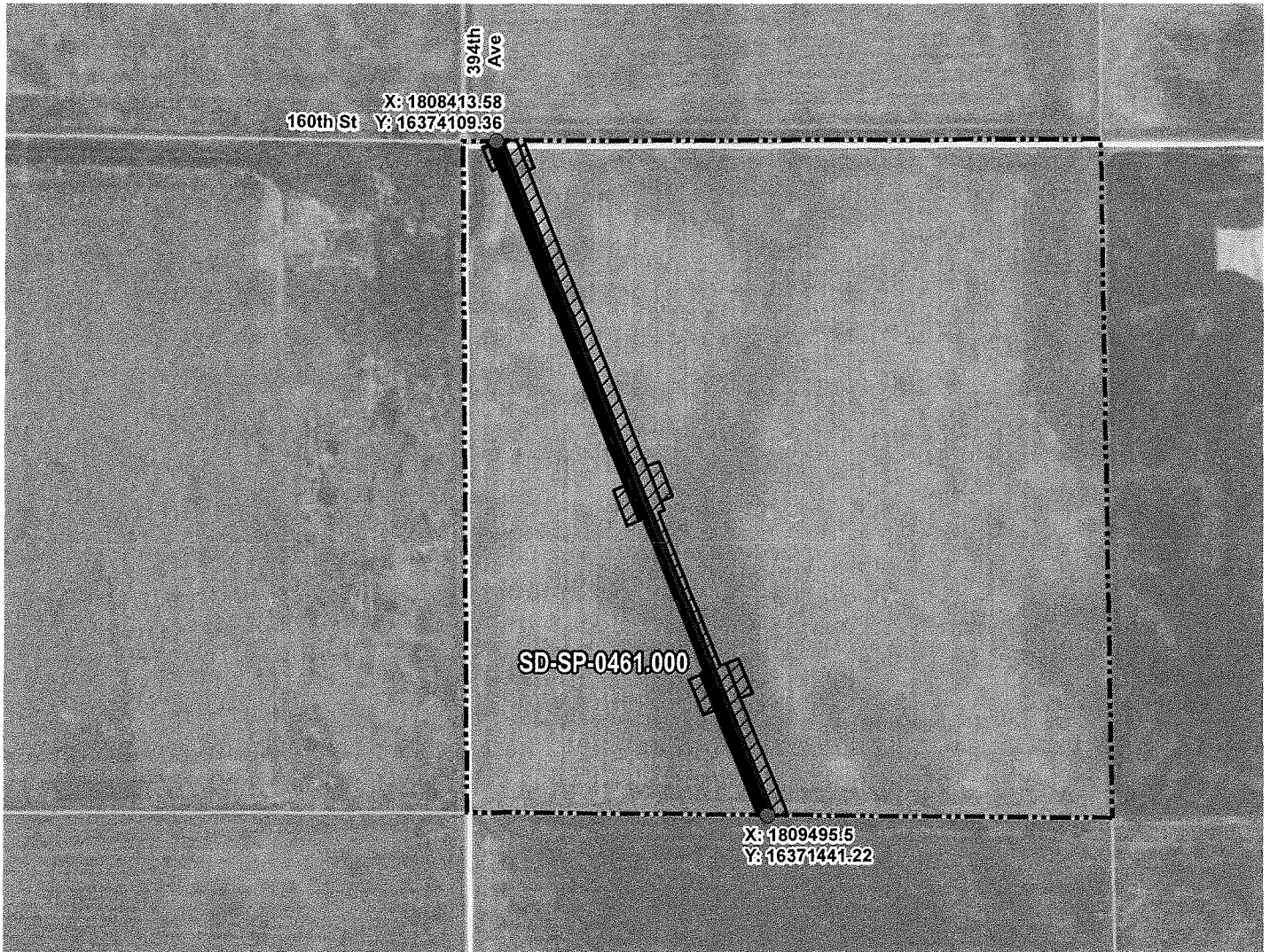
Attachment No. 1

EXHIBIT "B" PRELIMINARY ROUTE SPINK COUNTY, SOUTH DAKOTA



VICINITY MAP
N.T.S.

SEC. 06 T118N R62W



ROUTING LENGTH = 2875.35 FT +/-

IMPACTS: PIPELINE EASEMENT = 3.3 AC. +/- / TEMPORARY CONSTRUCTION EASEMENT = 4.238 AC. +/-

Legend

- PROPOSED ROUTE
- PARCEL BOUNDARY
- ADJACENT PROPERTIES
- PIPELINE EASEMENT
- TEMPORARY CONSTRUCTION EASEMENT
- SECTION BOUNDARY
- COUNTY BOUNDARY

NOTES:

1. THIS IS A PRELIMINARY DOCUMENT AND IS INTENDED TO DEPICT THE APPROXIMATE LOCATION OF A PROPOSED PIPELINE EASEMENT.
2. THIS DOCUMENT DOES NOT REPRESENT A LAND SURVEY AND IS NOT INTENDED TO DEPICT THE FINAL ALIGNMENT
3. COORDINATE SYSTEM: UTM ZONE 14 NORTH, NAD83, US SURVEY FEET

PRELIMINARY PIPELINE ROUTE

DRAWN BY: AC
CHECKED BY: JW
MAP DATE: 12/16/2021

SUMMIT CARBON SOLUTIONS
MIDWEST CARBON EXPRESS
JARROD HAVEN, ETAL

SCALE: 1 inch = 646'

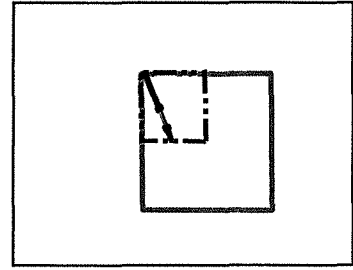
TAX ID: 001623
TRACT NUMBER: SD-SP-0461.000

REV NO.	DATE	DESCRIPTION
B	3/7/2022	REVISED WORKSPACE
C	12/2/2022	REVISED PARCEL BOUNDARY

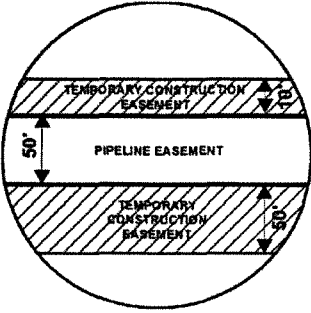


DRAWING NO. C-MCE-ACQ-SD-SP-0461.000 PROJECT NO. 450959 SHEET NO. 01 of 01

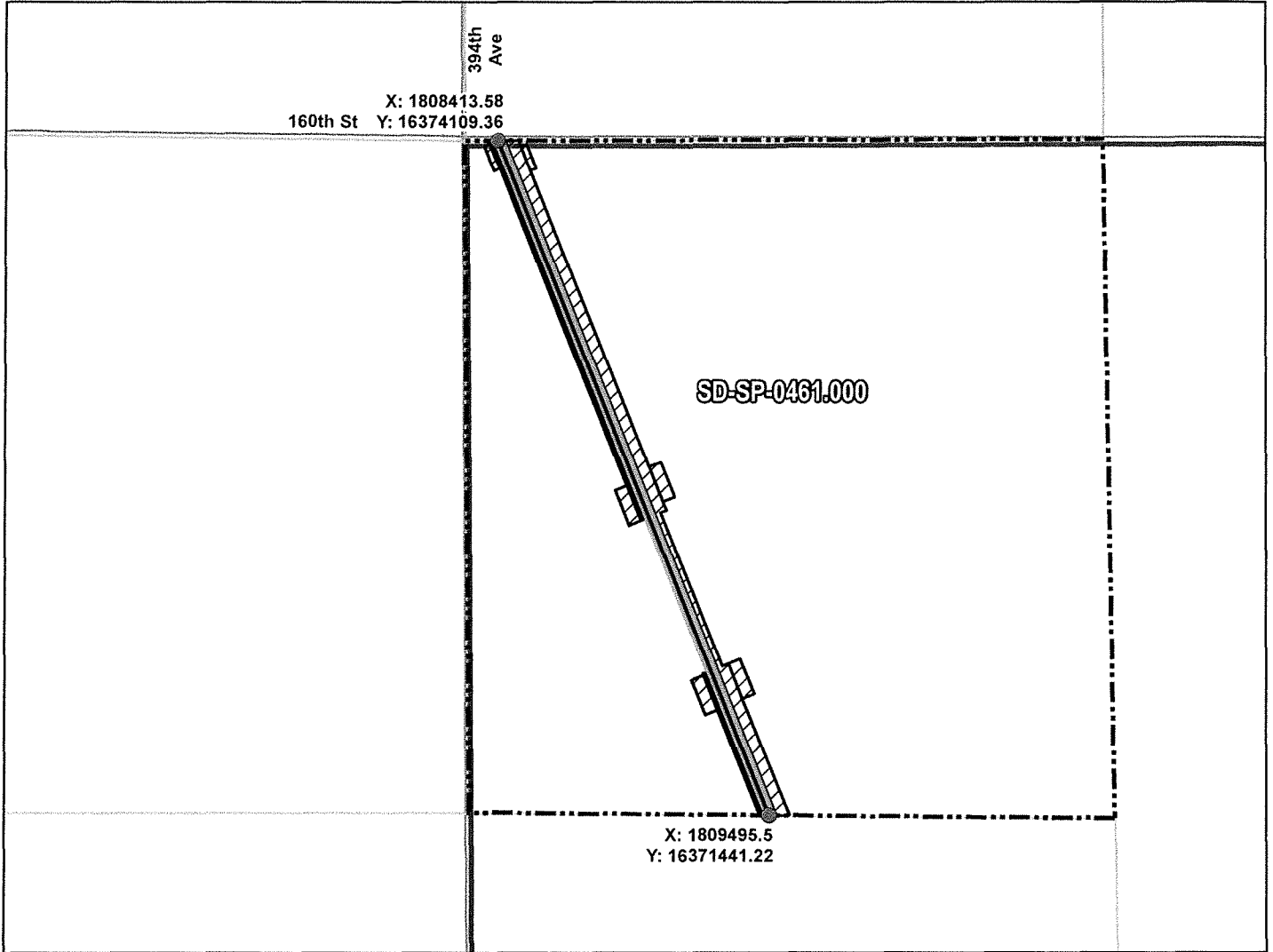
EXHIBIT "B" PRELIMINARY ROUTE SPINK COUNTY, SOUTH DAKOTA



VICINITY MAP
N.T.S.



SEC. 06 T118N R62W



ROUTING LENGTH = 2875.36 FT +/-

IMPACTS: PIPELINE EASEMENT = 3.3 AC. +/- / TEMPORARY CONSTRUCTION EASEMENT = 4.238 AC. +/-

Legend

- PROPOSED ROUTE
- ROADS
- PARCEL BOUNDARY
- ADJACENT PROPERTIES
- PIPELINE EASEMENT
- TEMPORARY CONSTRUCTION EASEMENT
- SECTION BOUNDARY
- COUNTY BOUNDARY

NOTES:

1. THIS IS A PRELIMINARY DOCUMENT AND IS INTENDED TO DEPICT THE APPROXIMATE LOCATION OF A PROPOSED PIPELINE EASEMENT.
2. THIS DOCUMENT DOES NOT REPRESENT A LAND SURVEY AND IS NOT INTENDED TO DEPICT THE FINAL ALIGNMENT
3. COORDINATE SYSTEM: UTM ZONE 14 NORTH, NAD83, US SURVEY FEET

SIGNATURE: _____ DATE: _____



**SUMMIT CARBON
SOLUTIONS**

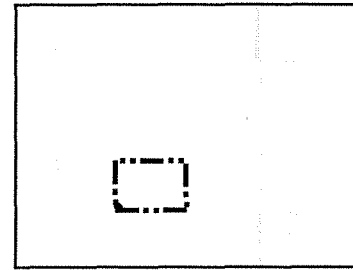
PRELIMINARY PIPELINE ROUTE

DRAWN BY:	AC	SUMMIT CARBON SOLUTIONS MIDWEST CARBON EXPRESS JARROD HAVEN, ETAL
CHECKED BY:	JW	
MAP DATE:	12/16/2021	
SCALE:	1 inch = 647'	TAX ID: 001623 TRACT NUMBER: SD-SP-0461.000
REV NO.	DATE	DESCRIPTION
B	3/7/2022	REVISED WORKSPACE
C	12/2/2022	REVISED PARCEL BOUNDARY
DRAWING NO. BW-MCE-ACQ-SD-SP-0461.000		PROJECT NO. 450959
		SHEET NO. 01 of 01

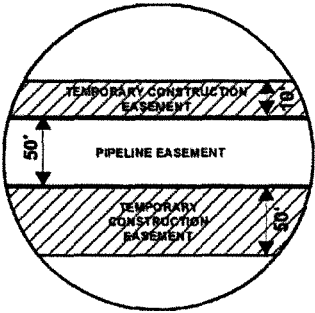
EXHIBIT "B"

PRELIMINARY ROUTE

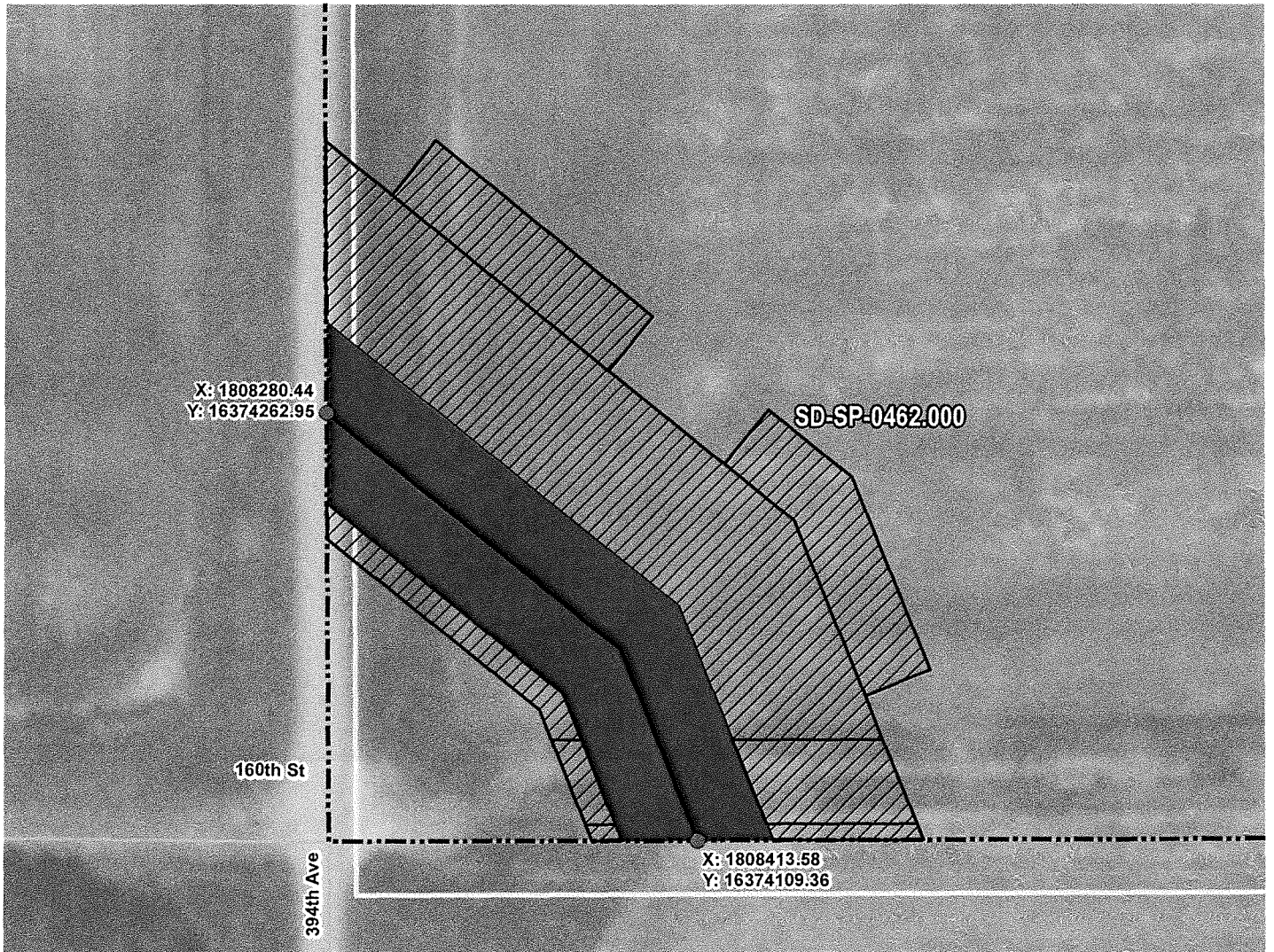
SPINK COUNTY, SOUTH DAKOTA



VICINITY MAP
N.T.S.



SEC. 31 T119N R62W



ROUTING LENGTH = 208.808 FT +/-

IMPACTS: PIPELINE EASEMENT = 0.24 AC. +/- / TEMPORARY CONSTRUCTION EASEMENT = 0.494 AC. +/-

Legend

- PROPOSED ROUTE
- PIPELINE EASEMENT
- PARCEL BOUNDARY
- TEMPORARY CONSTRUCTION EASEMENT
- ADJACENT PROPERTIES
- SECTION BOUNDARY
- COUNTY BOUNDARY

NOTES:

1. THIS IS A PRELIMINARY DOCUMENT AND IS INTENDED TO DEPICT THE APPROXIMATE LOCATION OF A PROPOSED PIPELINE EASEMENT.
2. THIS DOCUMENT DOES NOT REPRESENT A LAND SURVEY AND IS NOT INTENDED TO DEPICT THE FINAL ALIGNMENT
3. COORDINATE SYSTEM: UTM ZONE 14 NORTH, NAD83, US SURVEY FEET

PRELIMINARY PIPELINE ROUTE

DRAWN BY: AC		SUMMIT CARBON SOLUTIONS MIDWEST CARBON EXPRESS JARROD HAVEN, ETAL TAX ID: 012702 TRACT NUMBER: SD-SP-0462.000
CHECKED BY: JW		
MAP DATE: 12/16/2021		
SCALE: 1 inch = 58'		
REV NO.	DATE	DESCRIPTION
B	3/7/2022	REVISED WORKSPACE
C	12/2/2022	REVISED PARCEL BOUNDARY
DRAWING NO. C-MCE-ACQ-SD-SP-0462.000		PROJECT NO. 450959 SHEET NO. 01 of 01

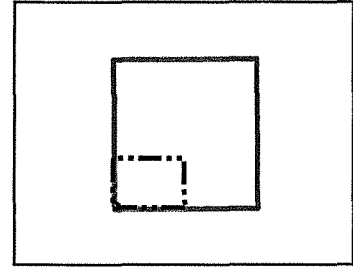
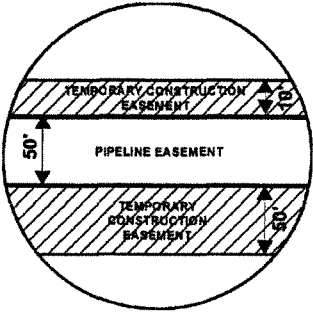


SUMMIT CARBON SOLUTIONS

EXHIBIT "B"

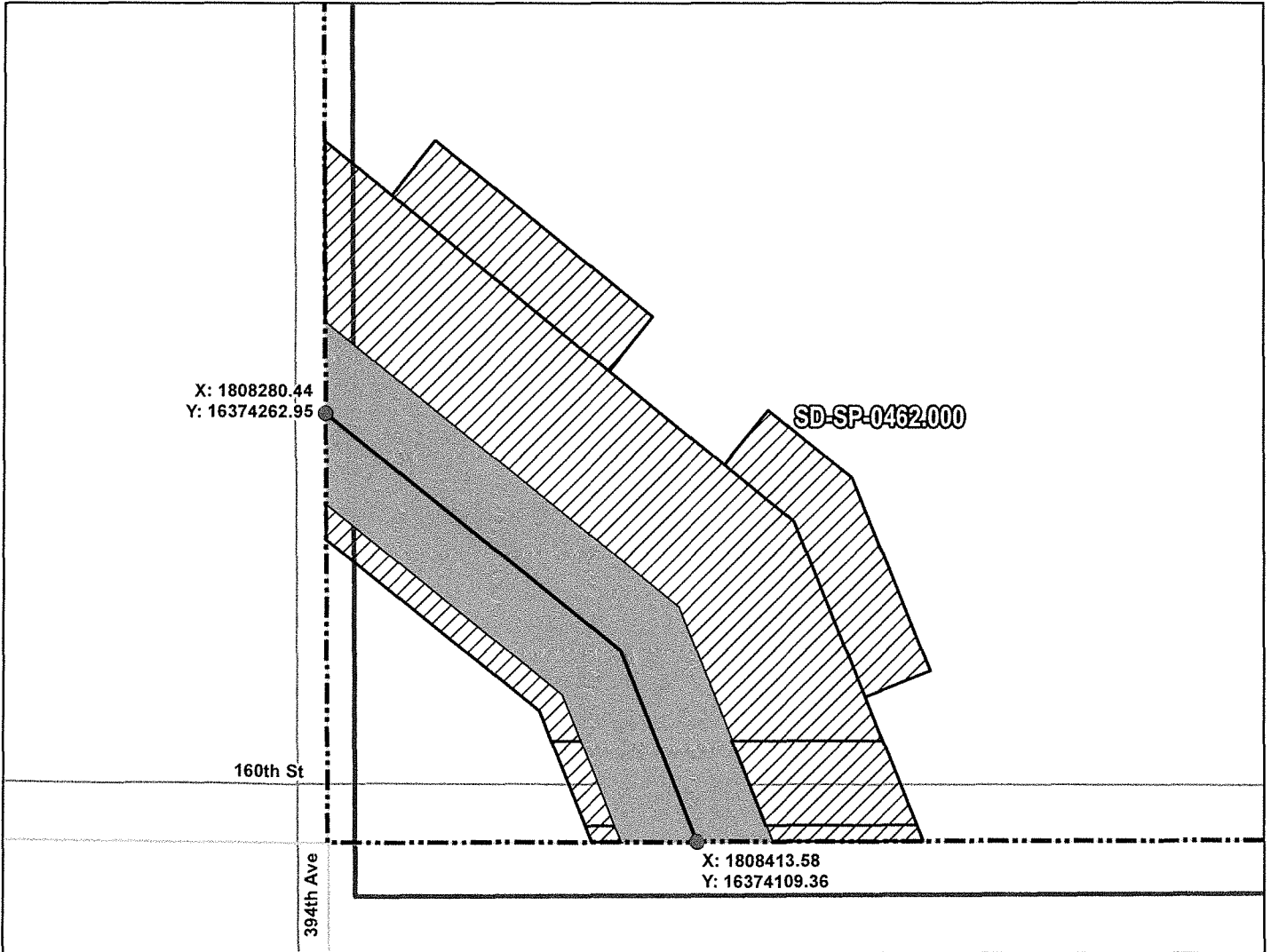
PRELIMINARY ROUTE

SPINK COUNTY, SOUTH DAKOTA



VICINITY MAP
N.T.S.

SEC. 31 T119N R62W



ROUTING LENGTH = 208.808 FT +/-

IMPACTS: PIPELINE EASEMENT = 0.24 AC. +/- / TEMPORARY CONSTRUCTION EASEMENT = 0.494 AC. +/-

Legend

- PROPOSED ROUTE
- PIPELINE EASEMENT
- ROADS
- TEMPORARY CONSTRUCTION EASEMENT
- PARCEL BOUNDARY
- SECTION BOUNDARY
- ADJACENT PROPERTIES
- COUNTY BOUNDARY

NOTES:

1. THIS IS A PRELIMINARY DOCUMENT AND IS INTENDED TO DEPICT THE APPROXIMATE LOCATION OF A PROPOSED PIPELINE EASEMENT.
2. THIS DOCUMENT DOES NOT REPRESENT A LAND SURVEY AND IS NOT INTENDED TO DEPICT THE FINAL ALIGNMENT
3. COORDINATE SYSTEM: UTM ZONE 14 NORTH, NAD83, US SURVEY FEET

SIGNATURE: _____ DATE: _____



SUMMIT CARBON SOLUTIONS

PRELIMINARY PIPELINE ROUTE

DRAWN BY: AC		SUMMIT CARBON SOLUTIONS MIDWEST CARBON EXPRESS JARROD HAVEN, ETAL TAX ID: 012702 TRACT NUMBER: SD-SP-0462.000
CHECKED BY: JW		
MAP DATE: 12/16/2021		
SCALE: 1 inch = 58'		
REV NO.	DATE	DESCRIPTION
B	3/7/2022	REVISED WORKSPACE
C	12/2/2022	REVISED PARCEL BOUNDARY
DRAWING NO. BW-MCE-ACQ-SD-SP-0462.000		PROJECT NO. 450959 SHEET NO. 01 of 01