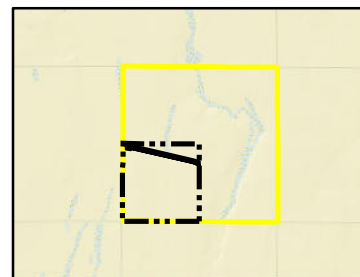


Attachment No. 1

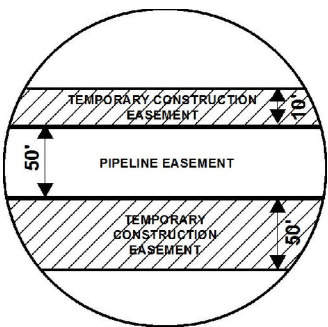
EXHIBIT "B"

PRELIMINARY ROUTE

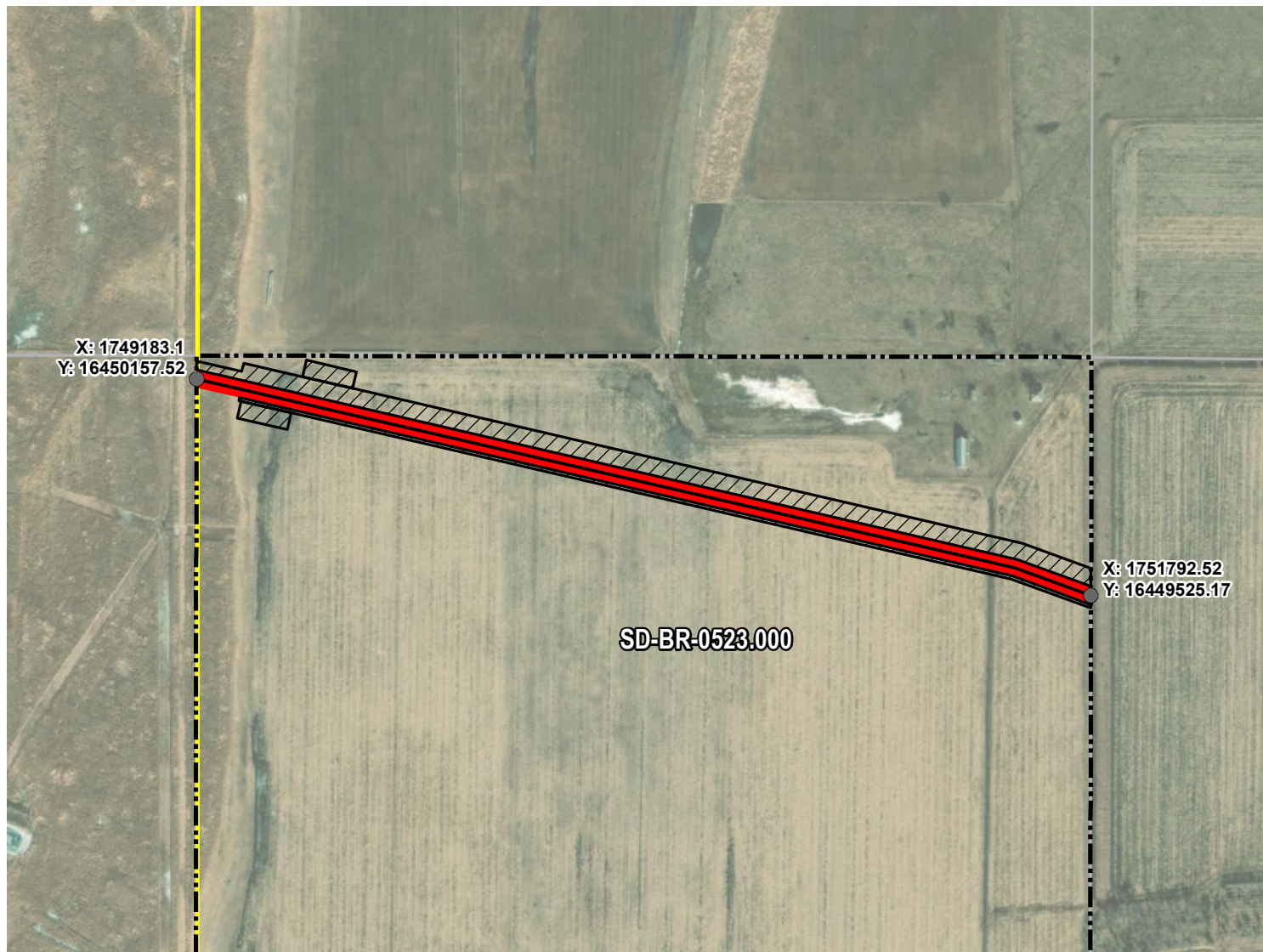
BROWN COUNTY, SOUTH DAKOTA



VICINITY MAP
N.T.S.



SEC. 20 T121N R64W



ROUTING LENGTH = 2686.511 FT +/-

IMPACTS: PIPELINE EASEMENT = 3.084 AC. +/- / TEMPORARY CONSTRUCTION EASEMENT = 3.935 AC. +/-

Legend

- PROPOSED ROUTE
- PIPELINE EASEMENT
- PARCEL BOUNDARY
- TEMPORARY CONSTRUCTION EASEMENT
- ADJACENT PROPERTIES
- SECTION BOUNDARY
- COUNTY BOUNDARY

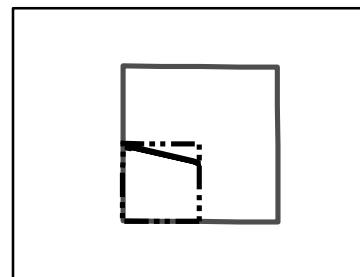
NOTES:

1. THIS IS A PRELIMINARY DOCUMENT AND IS INTENDED TO DEPICT THE APPROXIMATE LOCATION OF A PROPOSED PIPELINE EASEMENT.
2. THIS DOCUMENT DOES NOT REPRESENT A LAND SURVEY AND IS NOT INTENDED TO DEPICT THE FINAL ALIGNMENT
3. COORDINATE SYSTEM: UTM ZONE 14 NORTH, NAD83, US SURVEY FEET

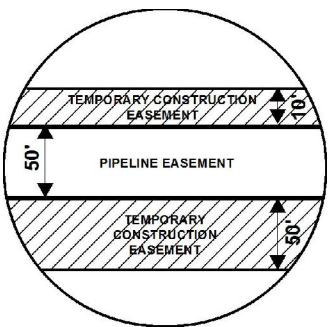
PRELIMINARY PIPELINE ROUTE

DRAWN BY:	AC	SUMMIT CARBON SOLUTIONS MIDWEST CARBON EXPRESS JOYCE A. DAHME TAX ID: 6496 TRACT NUMBER: SD-BR-0523.000
CHECKED BY:	JW	
MAP DATE:	12/8/2021	
SCALE:	1 inch = 476'	
REV NO.	DATE	DESCRIPTION
B	3/8/2022	REVISED WORKSPACE
C	7/12/2022	REVISED WORKSPACE
DRAWING NO.	PROJECT NO.	SHEET NO.
C-MCE-ACQ-SD-BR-0523.000	450959	01 of 01

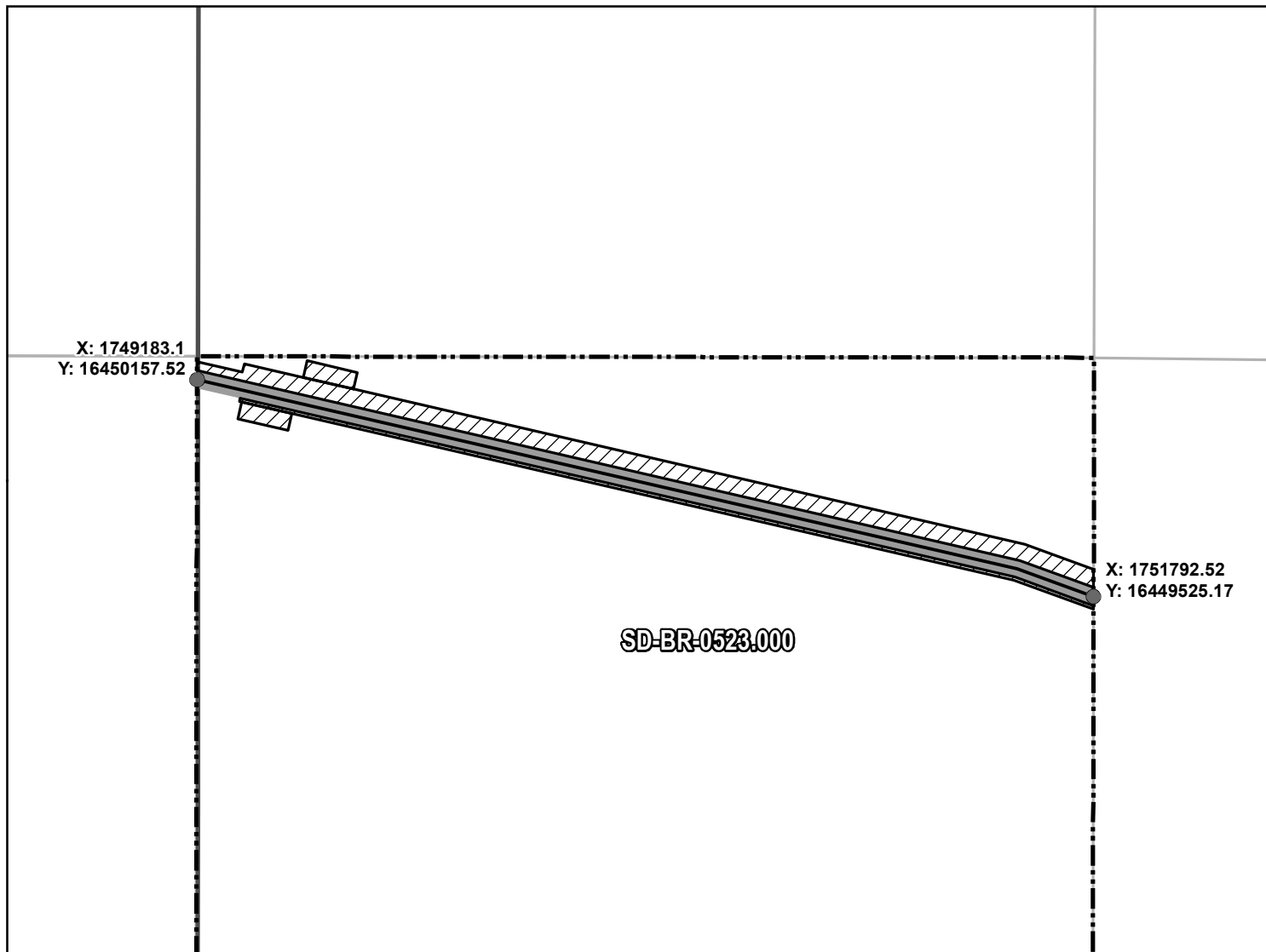
EXHIBIT "B" PRELIMINARY ROUTE BROWN COUNTY, SOUTH DAKOTA



VICINITY MAP
N.T.S.



SEC. 20 T121N R64W



ROUTING LENGTH = 2686.511 FT +/-
IMPACTS: PIPELINE EASEMENT = 3.084 AC. +/- / TEMPORARY CONSTRUCTION EASEMENT = 3.935 AC. +/-

Legend

- PROPOSED ROUTE
- ROADS
- ▭ PARCEL BOUNDARY
- ▭ ADJACENT PROPERTIES
- ▭ PIPELINE EASEMENT
- ▨ TEMPORARY CONSTRUCTION EASEMENT
- ▭ SECTION BOUNDARY
- ▭ COUNTY BOUNDARY

NOTES:

1. THIS IS A PRELIMINARY DOCUMENT AND IS INTENDED TO DEPICT THE APPROXIMATE LOCATION OF A PROPOSED PIPELINE EASEMENT.
2. THIS DOCUMENT DOES NOT REPRESENT A LAND SURVEY AND IS NOT INTENDED TO DEPICT THE FINAL ALIGNMENT
3. COORDINATE SYSTEM: UTM ZONE 14 NORTH, NAD83, US SURVEY FEET

SIGNATURE: _____ DATE: _____



**SUMMIT CARBON
SOLUTIONS**

PRELIMINARY PIPELINE ROUTE

DRAWN BY: AC

CHECKED BY: JW

MAP DATE: 12/8/2021

SCALE: 1 inch = 476'

REV NO. DATE

B 3/8/2022

C 7/12/2022

**SUMMIT CARBON SOLUTIONS
MIDWEST CARBON EXPRESS
JOYCE A. DAHME**

TAX ID: 6496
TRACT NUMBER: SD-BR-0523.000

DESCRIPTION

REVISED WORKSPACE

REVISED WORKSPACE

DRAWING NO.
BW-MCE-ACQ-SD-BR-0523.000

PROJECT NO. 450959

SHEET NO. 01 of 01