

Attachment No. 1

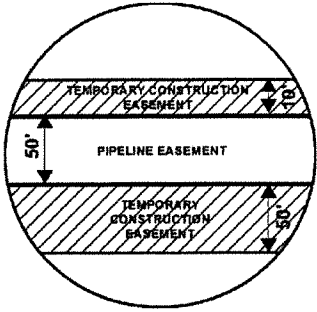
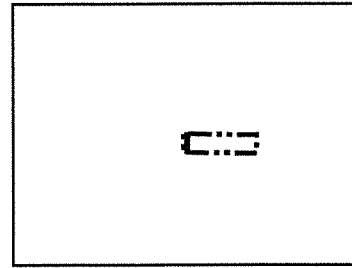


EXHIBIT "B"

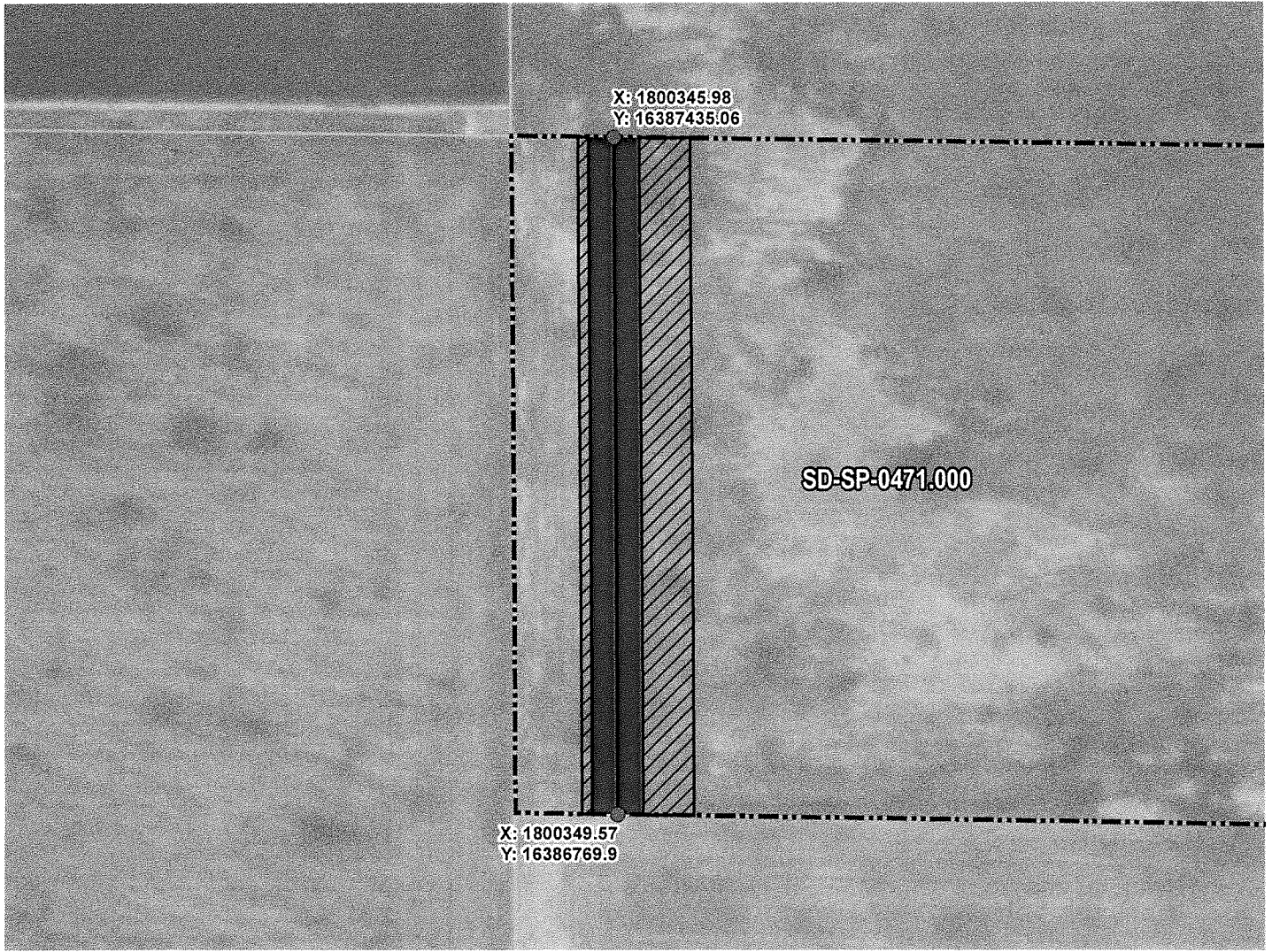
PRELIMINARY ROUTE

SPINK COUNTY, SOUTH DAKOTA



VICINITY MAP
N.T.S.

SEC. 23 T119N R63W



ROUTING LENGTH = 660.908 FT +/-
 IMPACTS: PIPELINE EASEMENT = 0.759 AC. +/- / TEMPORARY CONSTRUCTION EASEMENT = 0.91 AC. +/-

Legend

- PROPOSED ROUTE
- PIPELINE EASEMENT
- PARCEL BOUNDARY
- TEMPORARY CONSTRUCTION EASEMENT
- ADJACENT PROPERTIES
- SECTION BOUNDARY
- COUNTY BOUNDARY

NOTES:

1. THIS IS A PRELIMINARY DOCUMENT AND IS INTENDED TO DEPICT THE APPROXIMATE LOCATION OF A PROPOSED PIPELINE EASEMENT.
2. THIS DOCUMENT DOES NOT REPRESENT A LAND SURVEY AND IS NOT INTENDED TO DEPICT THE FINAL ALIGNMENT
3. COORDINATE SYSTEM: UTM ZONE 14 NORTH, NAD83, US SURVEY FEET

PRELIMINARY PIPELINE ROUTE

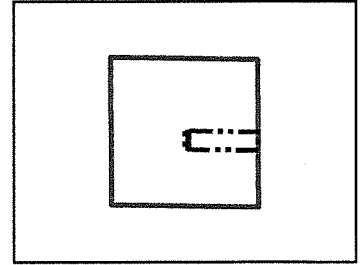
DRAWN BY: AC		SUMMIT CARBON SOLUTIONS MIDWEST CARBON EXPRESS MYRON O. HAMMER TESTAMENTARY CREDIT SHELTER TRUST TAX ID: 007314 TRACT NUMBER: SD-SP-0471.000
CHECKED BY: JW		
MAP DATE: 12/16/2021		
SCALE: 1 inch = 159'		
REV NO.	DATE	DESCRIPTION
B	3/7/2022	REVISED WORKSPACE
C	12/2/2022	REVISED PARCEL BOUNDARY
DRAWING NO. C-MCE-ACQ-SD-SP-0471.000		PROJECT NO. 450959
		SHEET NO. 01 of 01



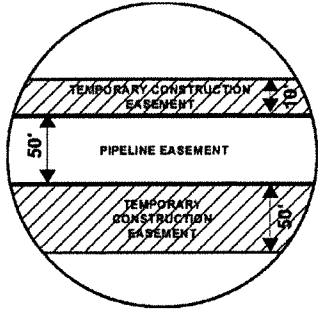
EXHIBIT "B"

PRELIMINARY ROUTE

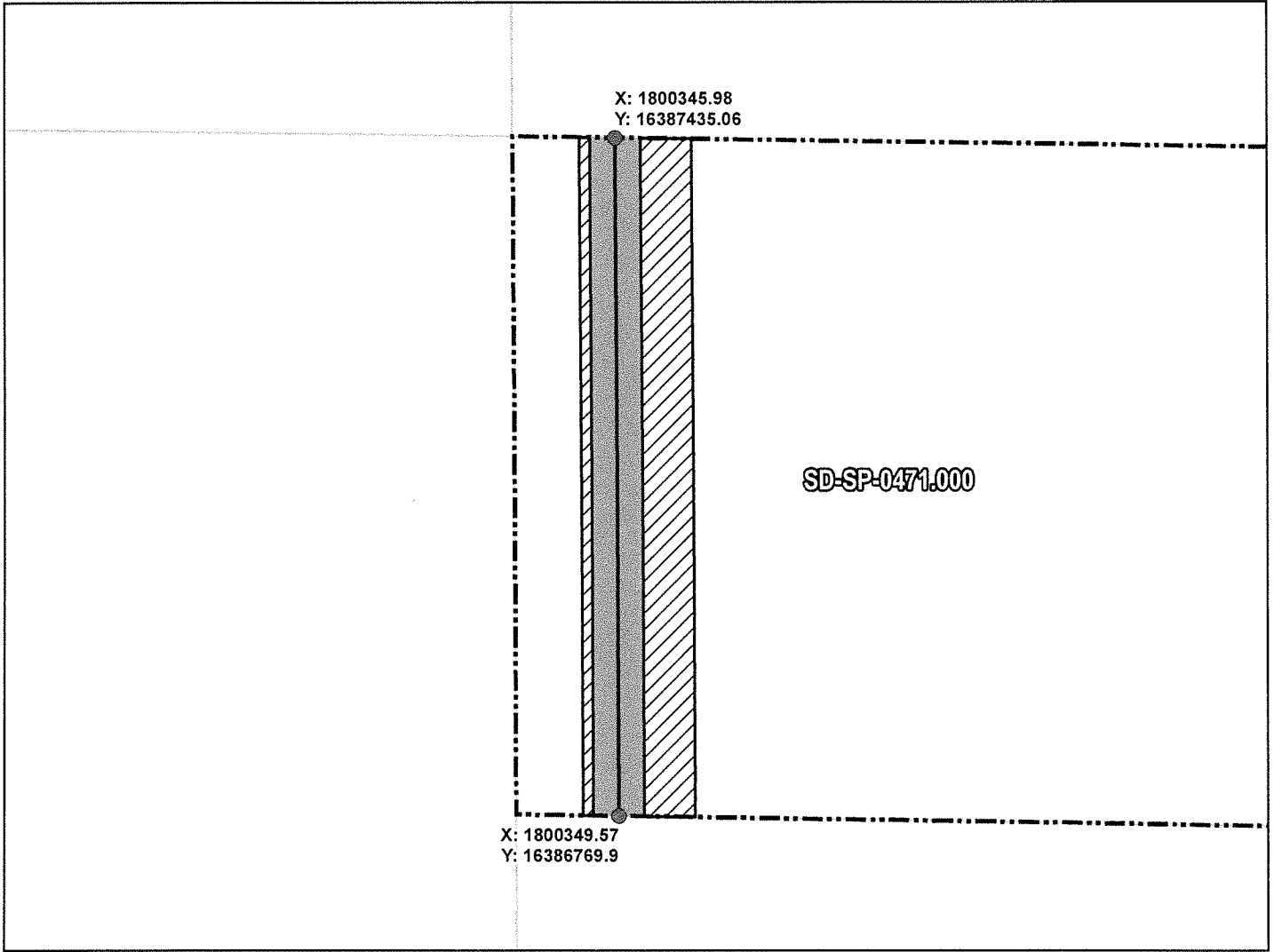
SPINK COUNTY, SOUTH DAKOTA



VICINITY MAP
N.T.S.



SEC. 23 T119N R63W



ROUTING LENGTH = 660.908 FT +/-
 IMPACTS: PIPELINE EASEMENT = 0.759 AC. +/- / TEMPORARY CONSTRUCTION EASEMENT = 0.91 AC. +/-

	PROPOSED ROUTE		PIPELINE EASEMENT
	ROADS		TEMPORARY CONSTRUCTION EASEMENT
	PARCEL BOUNDARY		SECTION BOUNDARY
	ADJACENT PROPERTIES		COUNTY BOUNDARY

NOTES:

1. THIS IS A PRELIMINARY DOCUMENT AND IS INTENDED TO DEPICT THE APPROXIMATE LOCATION OF A PROPOSED PIPELINE EASEMENT.
2. THIS DOCUMENT DOES NOT REPRESENT A LAND SURVEY AND IS NOT INTENDED TO DEPICT THE FINAL ALIGNMENT
3. COORDINATE SYSTEM: UTM ZONE 14 NORTH, NAD83, US SURVEY FEET

SIGNATURE: _____ DATE: _____



PRELIMINARY PIPELINE ROUTE

DRAWN BY: AC		SUMMIT CARBON SOLUTIONS MIDWEST CARBON EXPRESS MYRON O. HAMMER TESTAMENTARY CREDIT SHELTER TRUST TAX ID: 007314 TRACT NUMBER: SD-SP-0471.000
CHECKED BY: JW		
MAP DATE: 12/16/2021		
SCALE: 1 inch = 159'		
REV NO.	DATE	DESCRIPTION
B	3/7/2022	REVISED WORKSPACE
C	12/2/2022	REVISED PARCEL BOUNDARY
DRAWING NO. BW-MCE-ACQ-SD-SP-0471.000		PROJECT NO. 450959 SHEET NO. 01 of 01

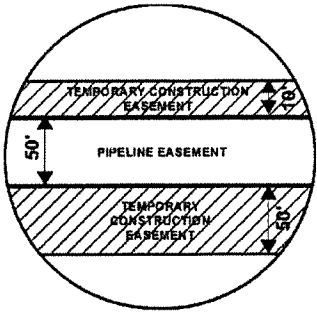
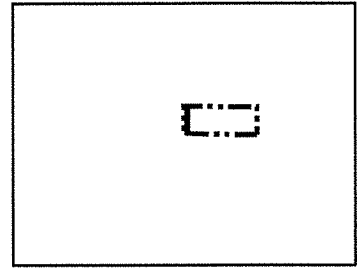


EXHIBIT "B"

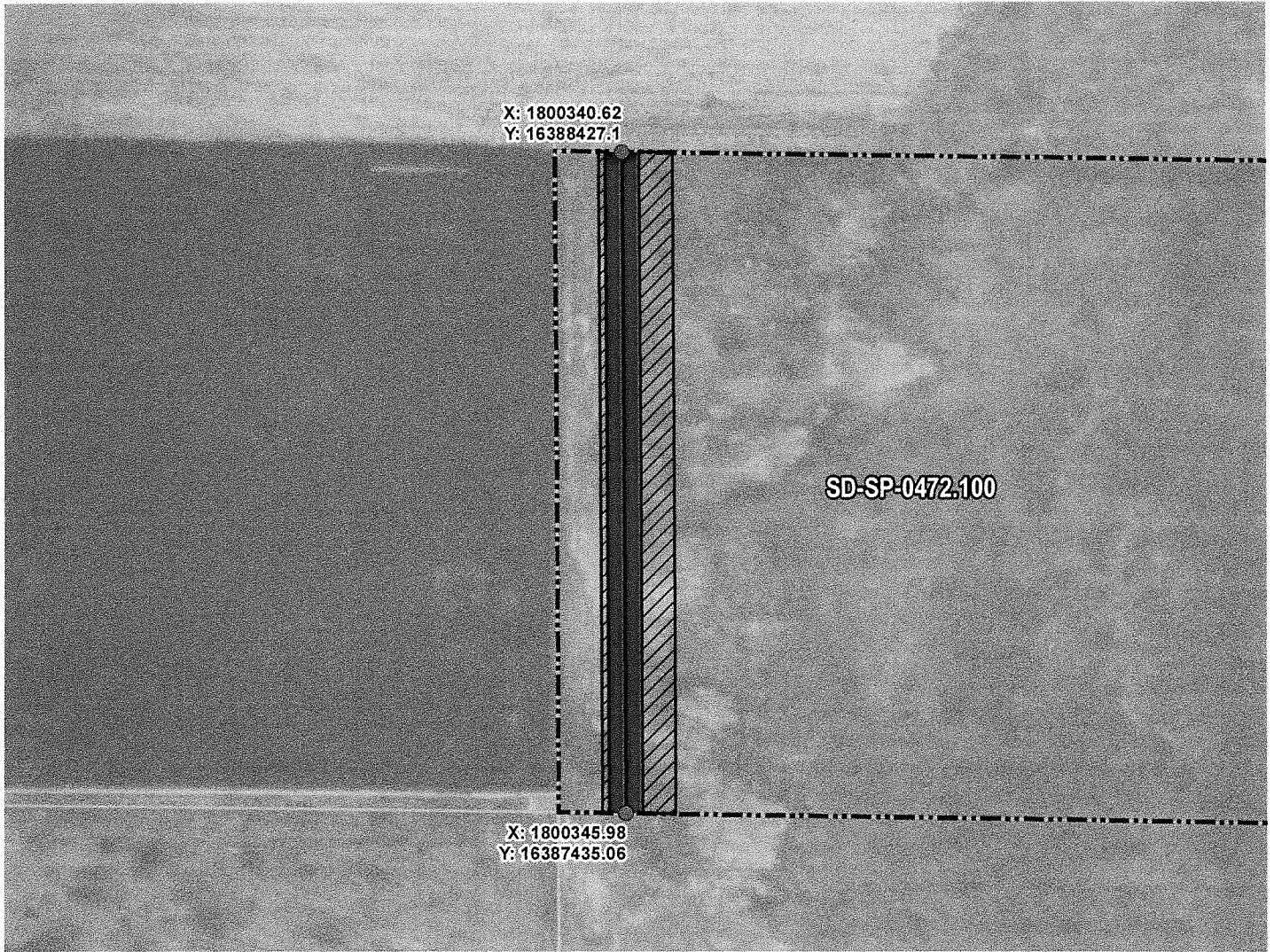
PRELIMINARY ROUTE

SPINK COUNTY, SOUTH DAKOTA



VICINITY MAP
N.T.S.

SEC. 23 T119N R63W



ROUTING LENGTH = 985.528 FT +/-

IMPACTS: PIPELINE EASEMENT = 1.131 AC. +/- / TEMPORARY CONSTRUCTION EASEMENT = 1.357 AC. +/-

Legend

- PROPOSED ROUTE
- PIPELINE EASEMENT
- PARCEL BOUNDARY
- TEMPORARY CONSTRUCTION EASEMENT
- ADJACENT PROPERTIES
- SECTION BOUNDARY
- COUNTY BOUNDARY

NOTES:

1. THIS IS A PRELIMINARY DOCUMENT AND IS INTENDED TO DEPICT THE APPROXIMATE LOCATION OF A PROPOSED PIPELINE EASEMENT.
2. THIS DOCUMENT DOES NOT REPRESENT A LAND SURVEY AND IS NOT INTENDED TO DEPICT THE FINAL ALIGNMENT
3. COORDINATE SYSTEM: UTM ZONE 14 NORTH, NAD83, US SURVEY FEET

PRELIMINARY PIPELINE ROUTE

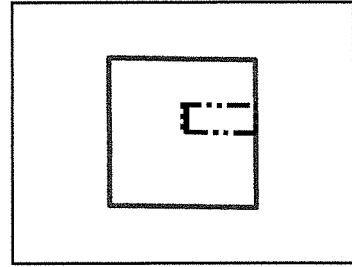
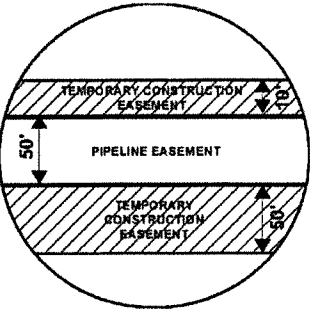
DRAWN BY: AC		SUMMIT CARBON SOLUTIONS MIDWEST CARBON EXPRESS MYRON O. HAMMER TESTAMENTARY CREDIT SHELTER TRUST TAX ID: 007312 TRACT NUMBER: SD-SP-0472.100
CHECKED BY: JW		
MAP DATE: 12/16/2021		
SCALE: 1 inch = 243'		
REV NO.	DATE	DESCRIPTION
B	3/7/2022	REVISED WORKSPACE
C	12/2/2022	REVISED PARCEL BOUNDARY
DRAWING NO. C-MCE-ACQ-SD-SP-0472.100		PROJECT NO. 450959
		SHEET NO. 01 of 01



EXHIBIT "B"

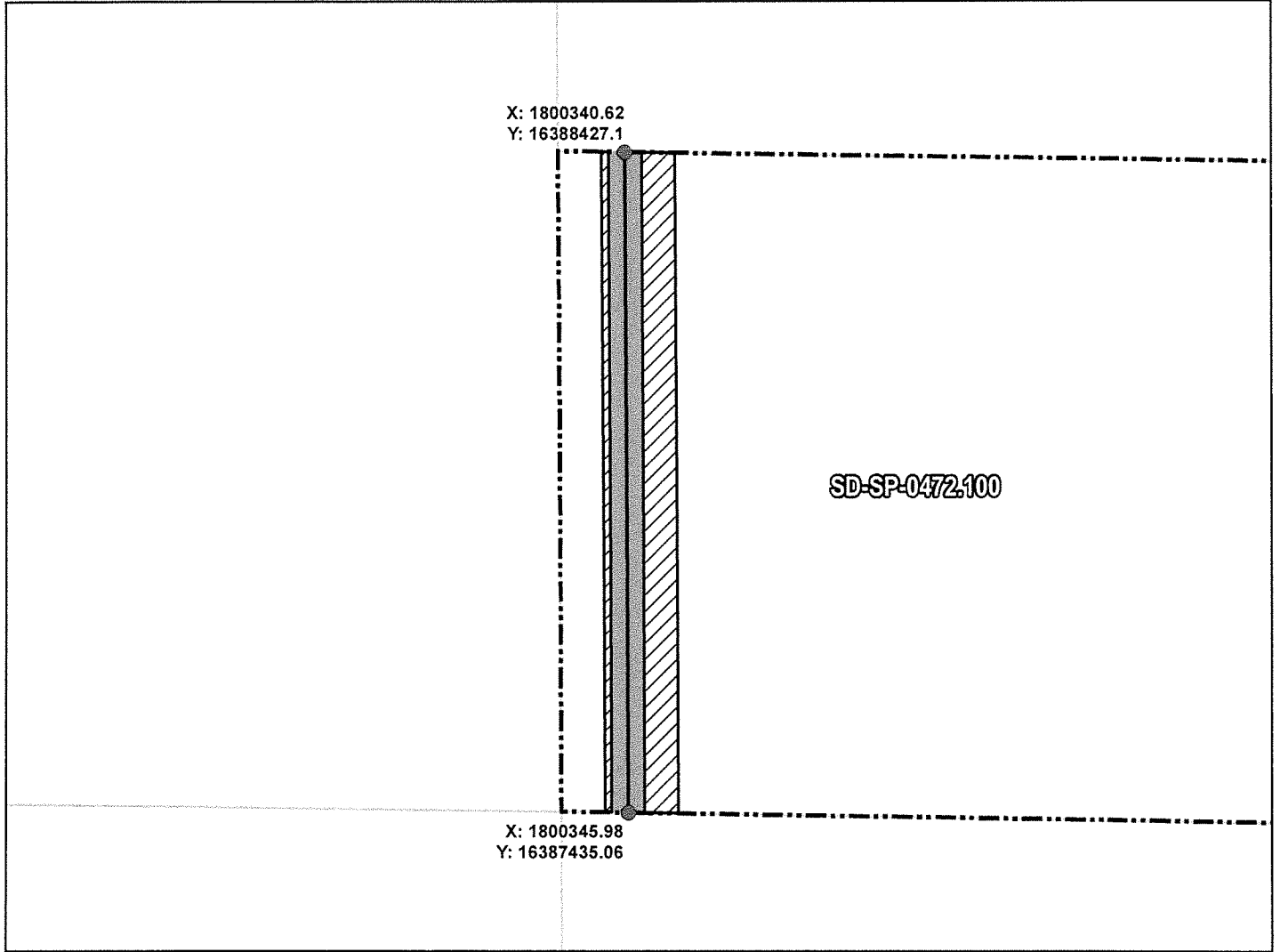
PRELIMINARY ROUTE

SPINK COUNTY, SOUTH DAKOTA



VICINITY MAP
N.T.S.

SEC. 23 T119N R63W



ROUTING LENGTH = 985.528 FT +/-

IMPACTS: PIPELINE EASEMENT = 1.131 AC. +/- / TEMPORARY CONSTRUCTION EASEMENT = 1.357 AC. +/-

Legend

- PROPOSED ROUTE
- ROADS
- PARCEL BOUNDARY
- ADJACENT PROPERTIES
- PIPELINE EASEMENT
- TEMPORARY CONSTRUCTION EASEMENT
- SECTION BOUNDARY
- COUNTY BOUNDARY

NOTES:

1. THIS IS A PRELIMINARY DOCUMENT AND IS INTENDED TO DEPICT THE APPROXIMATE LOCATION OF A PROPOSED PIPELINE EASEMENT.
2. THIS DOCUMENT DOES NOT REPRESENT A LAND SURVEY AND IS NOT INTENDED TO DEPICT THE FINAL ALIGNMENT
3. COORDINATE SYSTEM: UTM ZONE 14 NORTH, NAD83, US SURVEY FEET

SIGNATURE: _____ DATE: _____



PRELIMINARY PIPELINE ROUTE

DRAWN BY: AC		SUMMIT CARBON SOLUTIONS MIDWEST CARBON EXPRESS MYRON O. HAMMER TESTAMENTARY CREDIT SHELTER TRUST TAX ID: 007312 TRACT NUMBER: SD-SP-0472.100
CHECKED BY: JW		
MAP DATE: 12/16/2021		
SCALE: 1 inch = 244'		
REV NO.	DATE	DESCRIPTION
B	3/7/2022	REVISED WORKSPACE
C	12/2/2022	REVISED PARCEL BOUNDARY
DRAWING NO. BW-MCE-ACQ-SD-SP-0472.100		PROJECT NO. 450959 SHEET NO. 01 of 01

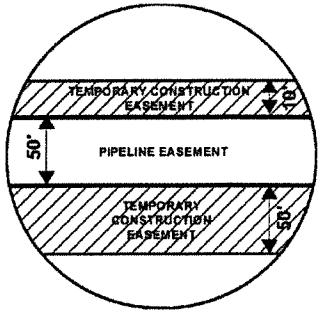
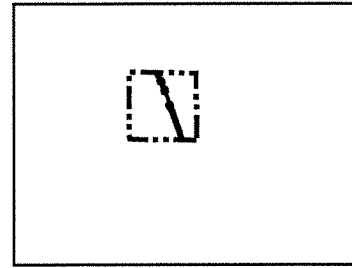


EXHIBIT "B"

PRELIMINARY ROUTE

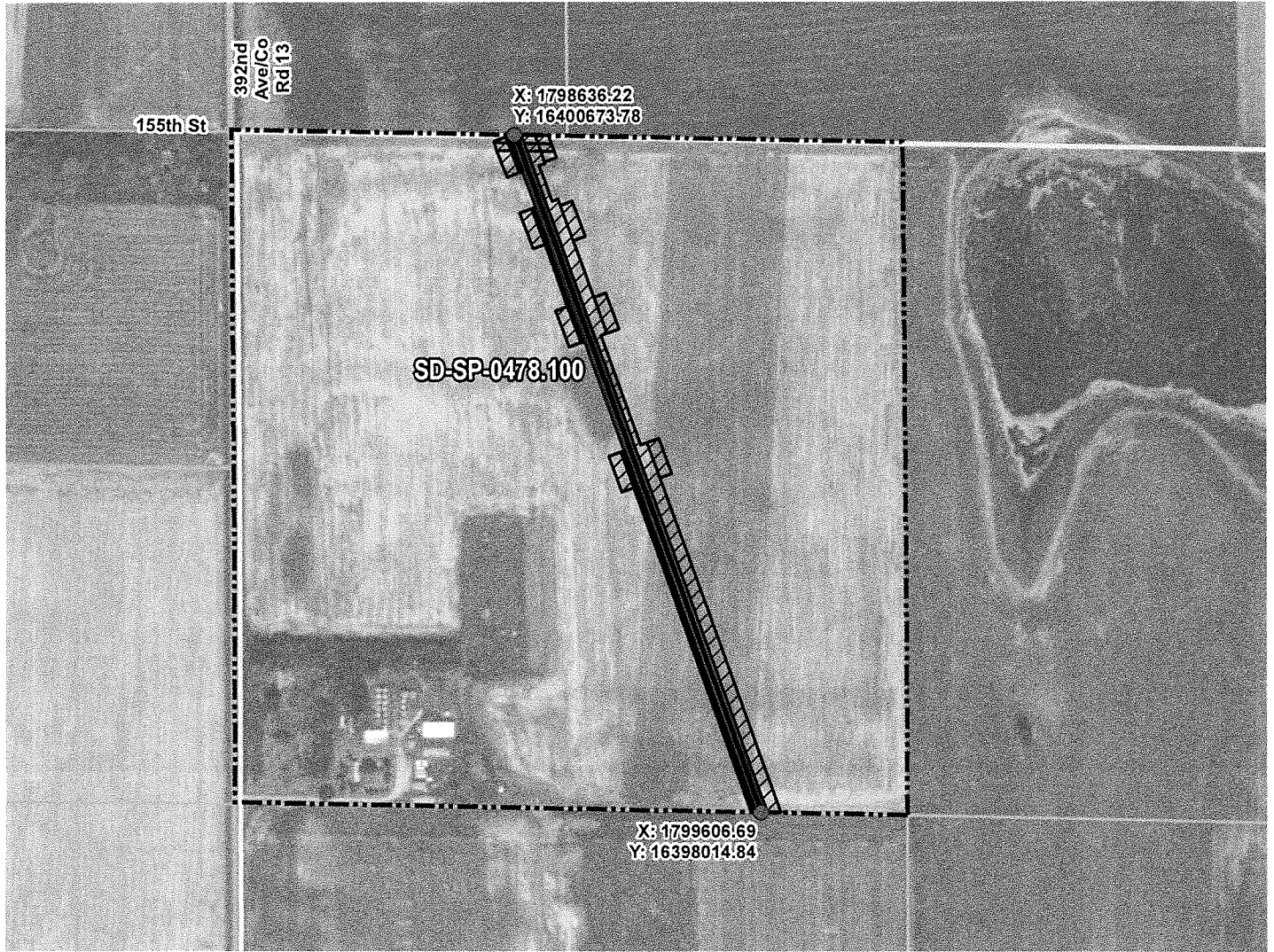
SPINK COUNTY, SOUTH DAKOTA



VICINITY MAP
N.T.S.



SEC. 11 T119N R63W



ROUTING LENGTH = 2830.994 FT +/-

IMPACTS: PIPELINE EASEMENT = 3.25 AC. +/- / TEMPORARY CONSTRUCTION EASEMENT = 4.735 AC. +/-

Legend

- PROPOSED ROUTE
- PARCEL BOUNDARY
- ADJACENT PROPERTIES
- PIPELINE EASEMENT
- TEMPORARY CONSTRUCTION EASEMENT
- SECTION BOUNDARY
- COUNTY BOUNDARY

NOTES:

1. THIS IS A PRELIMINARY DOCUMENT AND IS INTENDED TO DEPICT THE APPROXIMATE LOCATION OF A PROPOSED PIPELINE EASEMENT.
2. THIS DOCUMENT DOES NOT REPRESENT A LAND SURVEY AND IS NOT INTENDED TO DEPICT THE FINAL ALIGNMENT
3. COORDINATE SYSTEM: UTM ZONE 14 NORTH, NAD83, US SURVEY FEET

PRELIMINARY PIPELINE ROUTE

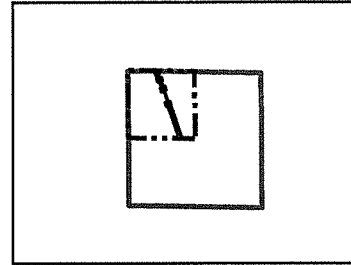
DRAWN BY:	AC	SUMMIT CARBON SOLUTIONS MIDWEST CARBON EXPRESS MYRON O. HAMMER TESTAMENTARY CREDIT SHELTER TRUST TAX ID: 007211 TRACT NUMBER: SD-SP-0478.100
CHECKED BY:	JW	
MAP DATE:	12/16/2021	
SCALE:	1 inch = 641'	
REV NO.	DATE	DESCRIPTION
B	3/7/2022	REVISED WORKSPACE
C	12/2/2022	REVISED PARCEL BOUNDARY
DRAWING NO. C-MCE-ACQ-SD-SP-0478.100		PROJECT NO. 450959 SHEET NO. 01 of 01



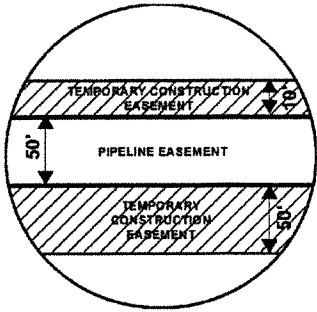
EXHIBIT "B"

PRELIMINARY ROUTE

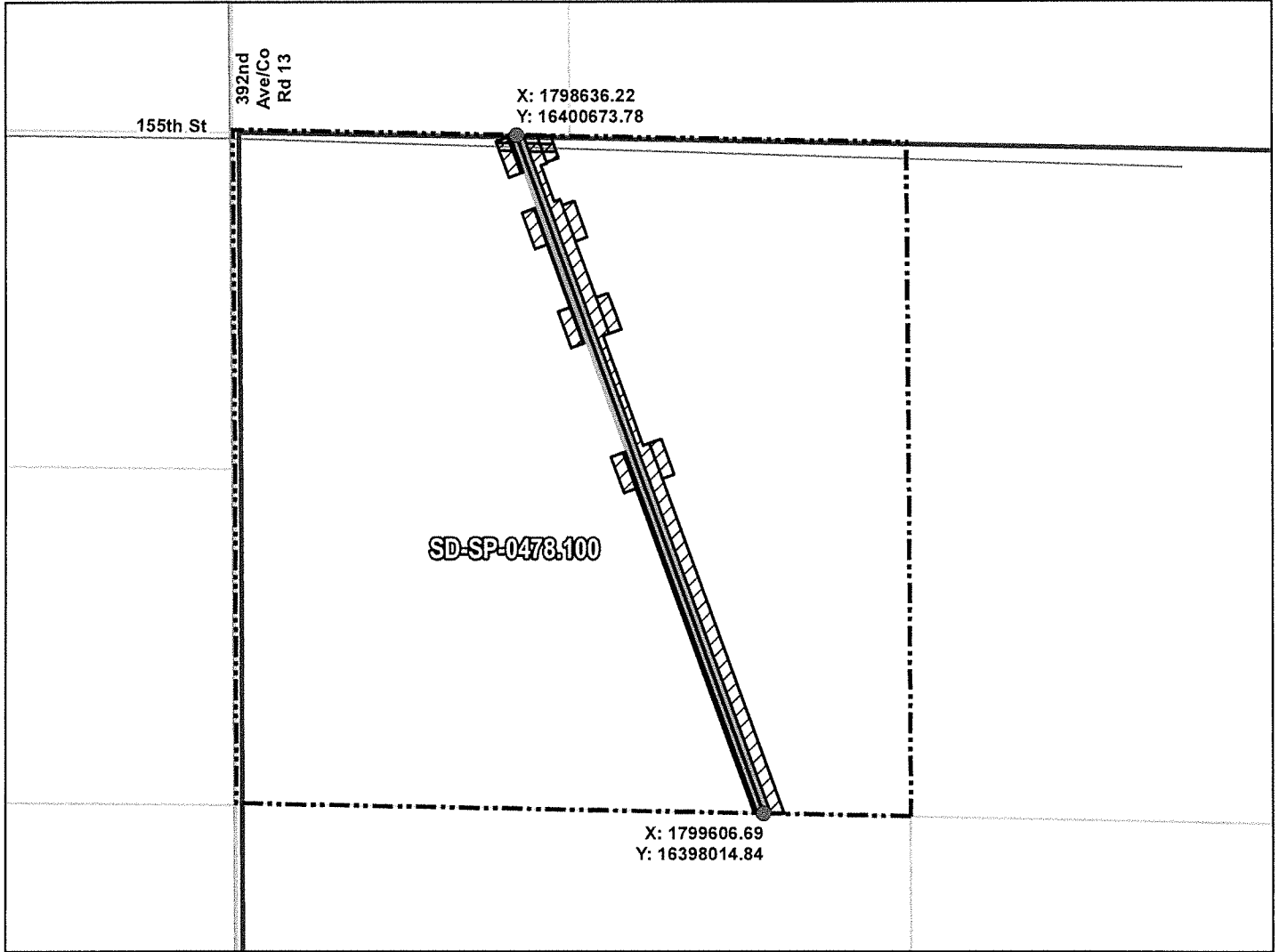
SPINK COUNTY, SOUTH DAKOTA



VICINITY MAP
N.T.S.



SEC. 11 T119N R63W



ROUTING LENGTH = 2830.994 FT +/-
 IMPACTS: PIPELINE EASEMENT = 3.25 AC. +/- / TEMPORARY CONSTRUCTION EASEMENT = 4.735 AC. +/-

Legend

- PROPOSED ROUTE
- ROADS
- PARCEL BOUNDARY
- ADJACENT PROPERTIES
- PIPELINE EASEMENT
- TEMPORARY CONSTRUCTION EASEMENT
- SECTION BOUNDARY
- COUNTY BOUNDARY

NOTES:

1. THIS IS A PRELIMINARY DOCUMENT AND IS INTENDED TO DEPICT THE APPROXIMATE LOCATION OF A PROPOSED PIPELINE EASEMENT.
2. THIS DOCUMENT DOES NOT REPRESENT A LAND SURVEY AND IS NOT INTENDED TO DEPICT THE FINAL ALIGNMENT
3. COORDINATE SYSTEM: UTM ZONE 14 NORTH, NAD83, US SURVEY FEET

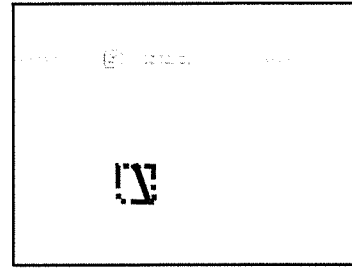
SIGNATURE: _____ DATE: _____



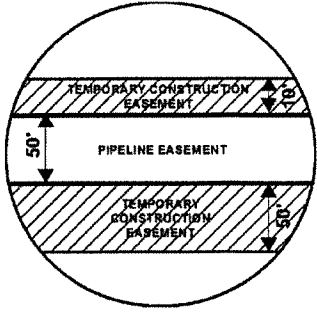
PRELIMINARY PIPELINE ROUTE

DRAWN BY:	AC	SUMMIT CARBON SOLUTIONS MIDWEST CARBON EXPRESS MYRON O. HAMMER TESTAMENTARY CREDIT SHELTER TRUST TAX ID: 007211 TRACT NUMBER: SD-SP-0478.100
CHECKED BY:	JW	
MAP DATE:	12/16/2021	
SCALE:	1 inch = 642'	
REV NO.	DATE	DESCRIPTION
B	3/7/2022	REVISED WORKSPACE
C	12/2/2022	REVISED PARCEL BOUNDARY
DRAWING NO. BW-MCE-ACQ-SD-SP-0478.100		PROJECT NO. 450959 SHEET NO. 01 of 01

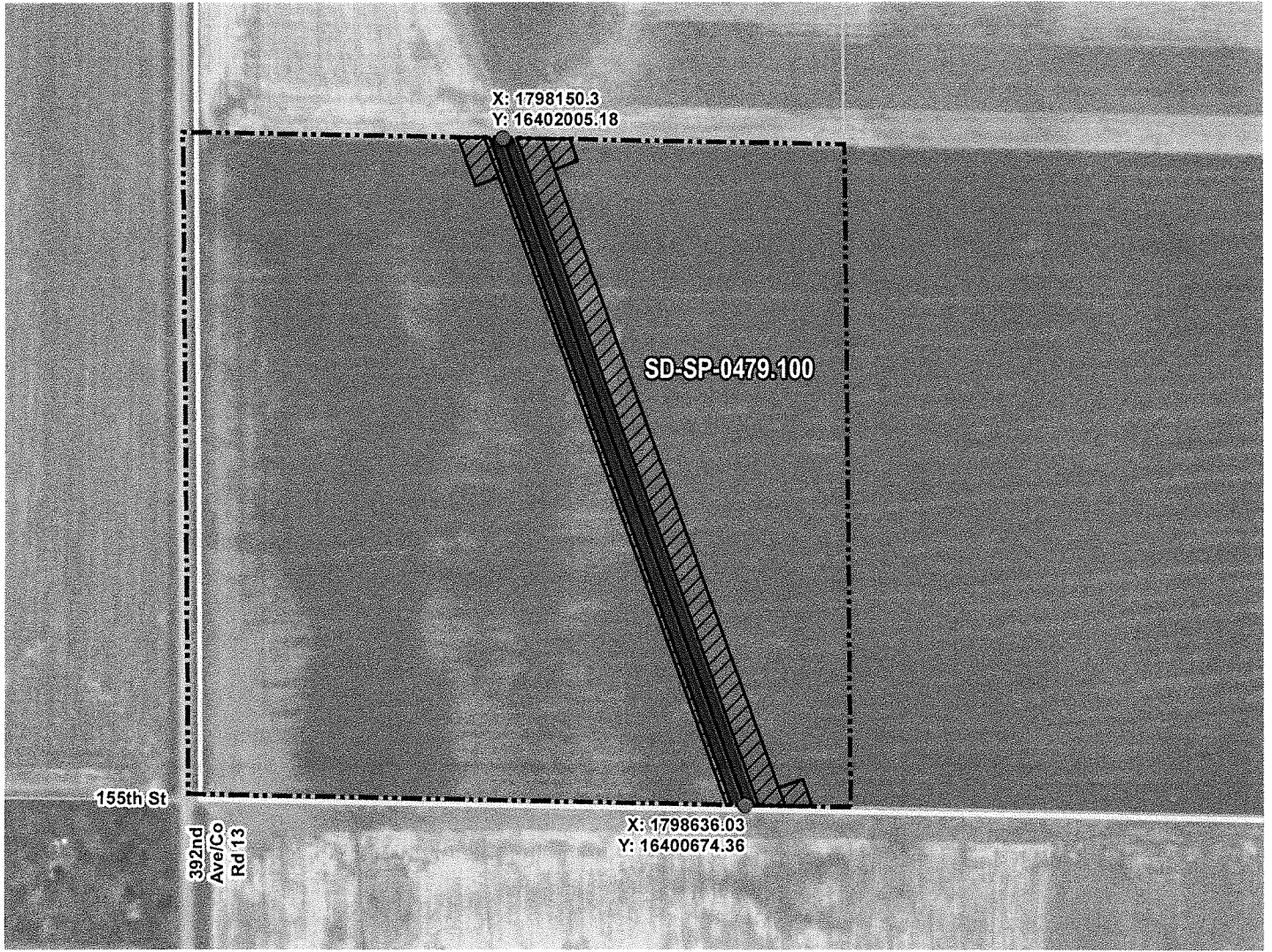
EXHIBIT "B" PRELIMINARY ROUTE SPINK COUNTY, SOUTH DAKOTA



VICINITY MAP
N.T.S.



SEC. 02 T119N R63W



ROUTING LENGTH = 1416.685 FT +/-

IMPACTS: PIPELINE EASEMENT = 1.626 AC. +/- TEMPORARY CONSTRUCTION EASEMENT = 2.179 AC. +/-

Legend

- PROPOSED ROUTE
- PARCEL BOUNDARY
- ADJACENT PROPERTIES
- PIPELINE EASEMENT
- TEMPORARY CONSTRUCTION EASEMENT
- SECTION BOUNDARY
- COUNTY BOUNDARY

NOTES:

1. THIS IS A PRELIMINARY DOCUMENT AND IS INTENDED TO DEPICT THE APPROXIMATE LOCATION OF A PROPOSED PIPELINE EASEMENT.
2. THIS DOCUMENT DOES NOT REPRESENT A LAND SURVEY AND IS NOT INTENDED TO DEPICT THE FINAL ALIGNMENT
3. COORDINATE SYSTEM: UTM ZONE 14 NORTH, NAD83, US SURVEY FEET

PRELIMINARY PIPELINE ROUTE

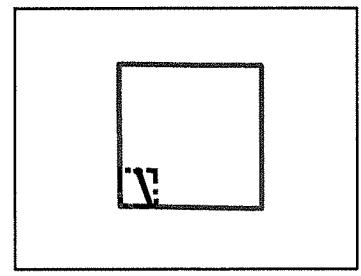
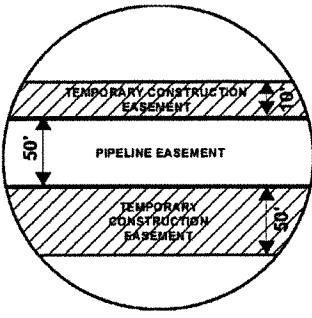
DRAWN BY: AC		SUMMIT CARBON SOLUTIONS MIDWEST CARBON EXPRESS MYRON O. HAMMER TESTAMENTARY CREDIT SHELTER TRUST TAX ID: 007142 TRACT NUMBER: SD-SP-0479.100
CHECKED BY: JW		
MAP DATE: 12/16/2021		
SCALE: 1 inch = 325'		
REV NO.	DATE	DESCRIPTION
B	3/7/2022	REVISED WORKSPACE
C	12/8/2022	REVISED PARCEL BOUNDARY
DRAWING NO. C-MCE-ACQ-SD-SP-0479.100		PROJECT NO. 450959
		SHEET NO. 01 of 01



EXHIBIT "B"

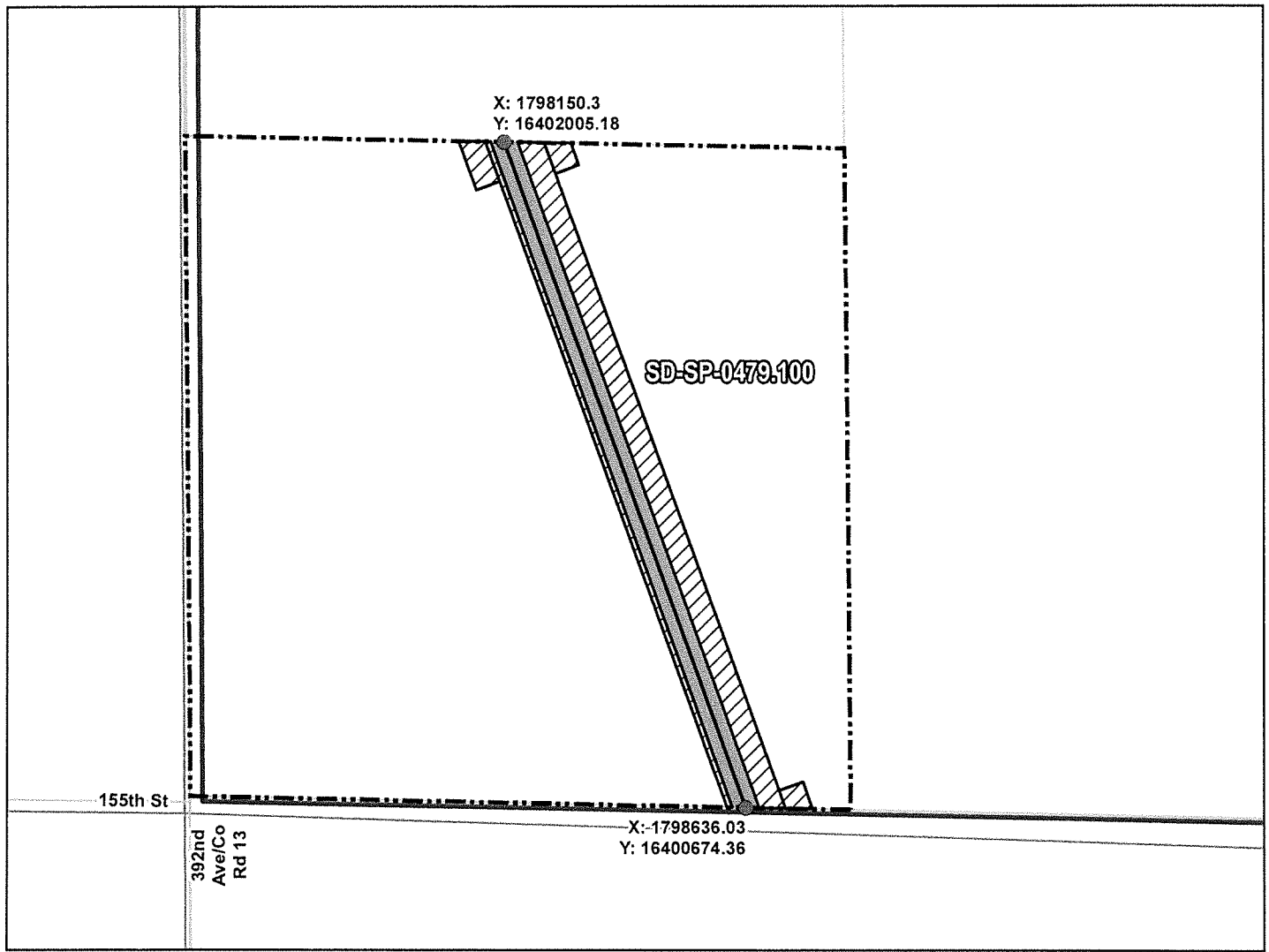
PRELIMINARY ROUTE

SPINK COUNTY, SOUTH DAKOTA



VICINITY MAP
N.T.S.

SEC. 02 T119N R63W



ROUTING LENGTH = 1416.685 FT +/-
IMPACTS: PIPELINE EASEMENT = 1.626 AC. +/- / TEMPORARY CONSTRUCTION EASEMENT = 2.179 AC. +/-

PROPOSED ROUTE	PIPELINE EASEMENT
ROADS	TEMPORARY CONSTRUCTION EASEMENT
PARCEL BOUNDARY	SECTION BOUNDARY
ADJACENT PROPERTIES	COUNTY BOUNDARY

NOTES:
 1. THIS IS A PRELIMINARY DOCUMENT AND IS INTENDED TO DEPICT THE APPROXIMATE LOCATION OF A PROPOSED PIPELINE EASEMENT.
 2. THIS DOCUMENT DOES NOT REPRESENT A LAND SURVEY AND IS NOT INTENDED TO DEPICT THE FINAL ALIGNMENT
 3. COORDINATE SYSTEM: UTM ZONE 14 NORTH, NAD83, US SURVEY FEET
 SIGNATURE: _____ DATE: _____



PRELIMINARY PIPELINE ROUTE		
DRAWN BY:	AC	SUMMIT CARBON SOLUTIONS MIDWEST CARBON EXPRESS MYRON O. HAMMER TESTAMENTARY CREDIT SHELTER TRUST TAX ID: 007142 TRACT NUMBER: SD-SP-0479.100
CHECKED BY:	JW	
MAP DATE:	12/16/2021	
SCALE:	1 inch = 325'	
REV NO.	DATE	DESCRIPTION
B	3/7/2022	REVISED WORKSPACE
C	12/8/2022	REVISED PARCEL BOUNDARY
DRAWING NO. BW-MCE-ACQ-SD-SP-0479.100		PROJECT NO. 450959 SHEET NO. 01 of 01

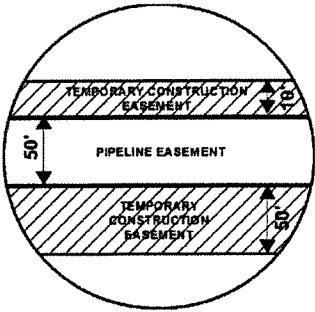
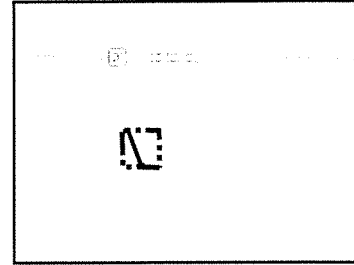


EXHIBIT "B"

PRELIMINARY ROUTE

SPINK COUNTY, SOUTH DAKOTA



VICINITY MAP
N.T.S.

SEC. 02 T119N R63W



ROUTING LENGTH = 1416.168 FT +/-
 IMPACTS: PIPELINE EASEMENT = 1.626 AC. +/- TEMPORARY CONSTRUCTION EASEMENT = 1.122 AC. +/-

	PROPOSED ROUTE		PIPELINE EASEMENT
	PARCEL BOUNDARY		TEMPORARY CONSTRUCTION EASEMENT
	ADJACENT PROPERTIES		SECTION BOUNDARY
			COUNTY BOUNDARY

NOTES:

1. THIS IS A PRELIMINARY DOCUMENT AND IS INTENDED TO DEPICT THE APPROXIMATE LOCATION OF A PROPOSED PIPELINE EASEMENT.
2. THIS DOCUMENT DOES NOT REPRESENT A LAND SURVEY AND IS NOT INTENDED TO DEPICT THE FINAL ALIGNMENT
3. COORDINATE SYSTEM: UTM ZONE 14 NORTH, NAD83, US SURVEY FEET

PRELIMINARY PIPELINE ROUTE

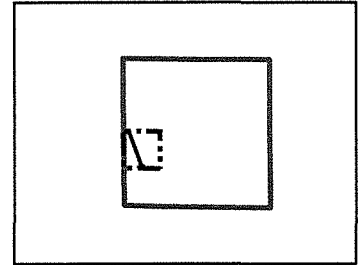
DRAWN BY:	AC	SUMMIT CARBON SOLUTIONS MIDWEST CARBON EXPRESS MYRON O. HAMMER TESTAMENTARY CREDIT SHELTER TRUST TAX ID: 007141 TRACT NUMBER: SD-SP-0480.100
CHECKED BY:	JW	
MAP DATE:	12/16/2021	
SCALE:	1 inch = 321'	
REV NO.	DATE	DESCRIPTION
B	3/7/2022	REVISED WORKSPACE
C	12/8/2022	REVISED PARCEL BOUNDARY
DRAWING NO. C-MCE-ACQ-SD-SP-0480.100		PROJECT NO. 450959 SHEET NO. 01 of 01



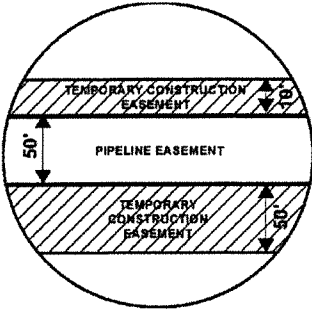
EXHIBIT "B"

PRELIMINARY ROUTE

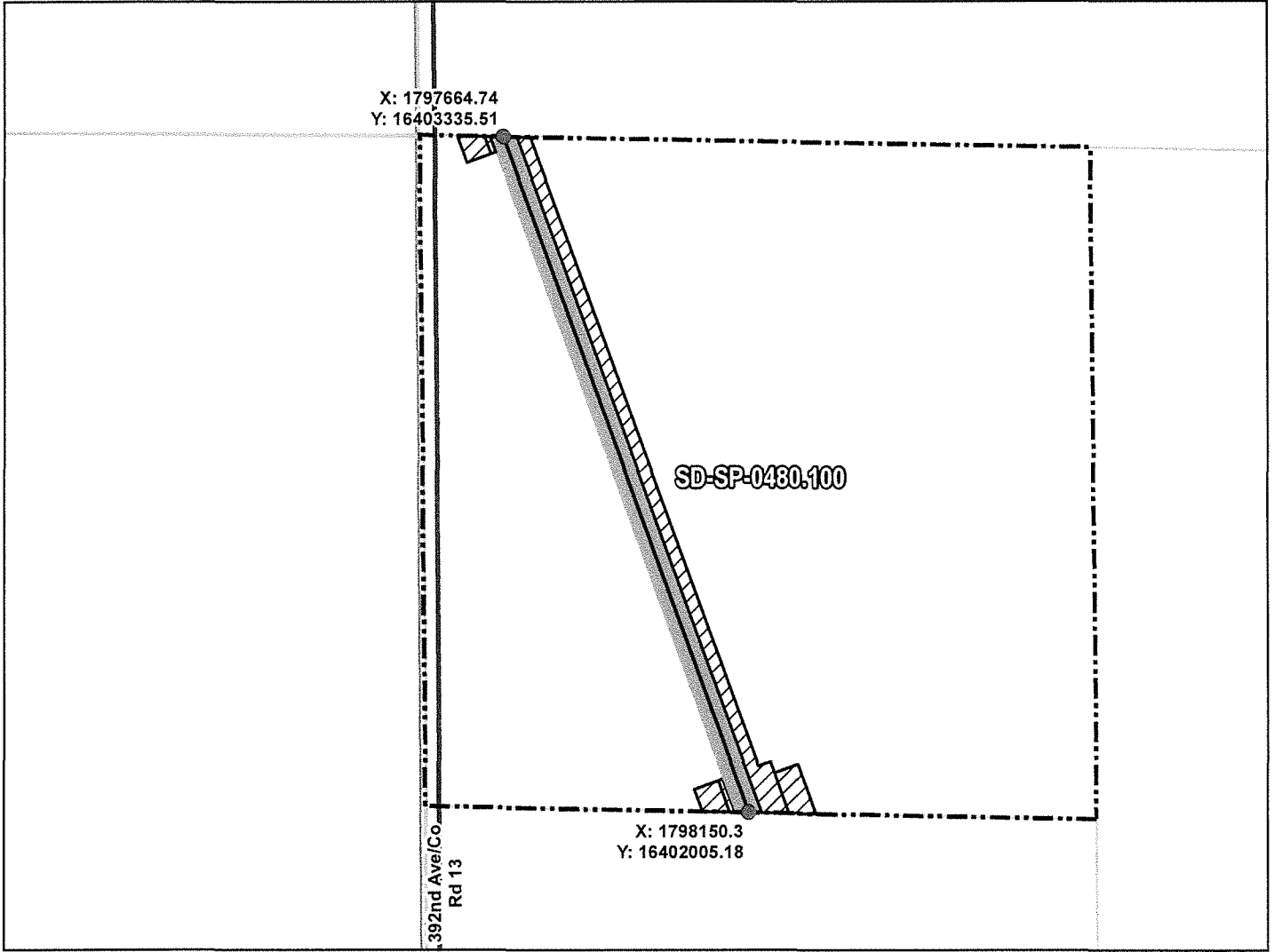
SPINK COUNTY, SOUTH DAKOTA



VICINITY MAP
N.T.S.



SEC. 02 T119N R63W



ROUTING LENGTH = 1416.168 FT +/-
 IMPACTS: PIPELINE EASEMENT = 1.626 AC. +/- / TEMPORARY CONSTRUCTION EASEMENT = 1.122 AC. +/-

PROPOSED ROUTE	PIPELINE EASEMENT
ROADS	TEMPORARY CONSTRUCTION EASEMENT
PARCEL BOUNDARY	SECTION BOUNDARY
ADJACENT PROPERTIES	COUNTY BOUNDARY

NOTES:

1. THIS IS A PRELIMINARY DOCUMENT AND IS INTENDED TO DEPICT THE APPROXIMATE LOCATION OF A PROPOSED PIPELINE EASEMENT.
2. THIS DOCUMENT DOES NOT REPRESENT A LAND SURVEY AND IS NOT INTENDED TO DEPICT THE FINAL ALIGNMENT
3. COORDINATE SYSTEM: UTM ZONE 14 NORTH, NAD83, US SURVEY FEET

SIGNATURE: _____ DATE: _____



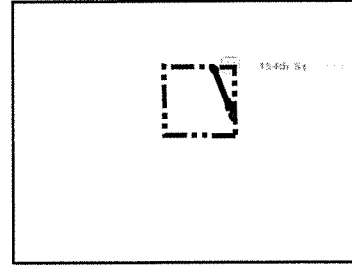
PRELIMINARY PIPELINE ROUTE

DRAWN BY:	AC	SUMMIT CARBON SOLUTIONS MIDWEST CARBON EXPRESS MYRON O. HAMMER TESTAMENTARY CREDIT SHELTER TRUST TAX ID: 007141 TRACT NUMBER: SD-SP-0480.100
CHECKED BY:	JW	
MAP DATE:	12/16/2021	
SCALE:	1 inch = 322'	
REV NO.	DATE	DESCRIPTION
B	3/7/2022	REVISED WORKSPACE
C	12/8/2022	REVISED PARCEL BOUNDARY
DRAWING NO. BW-MCE-ACQ-SD-SP-0480.100		PROJECT NO. 450959
		SHEET NO. 01 of 01

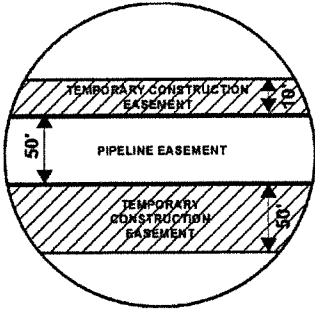
EXHIBIT "B"

PRELIMINARY ROUTE

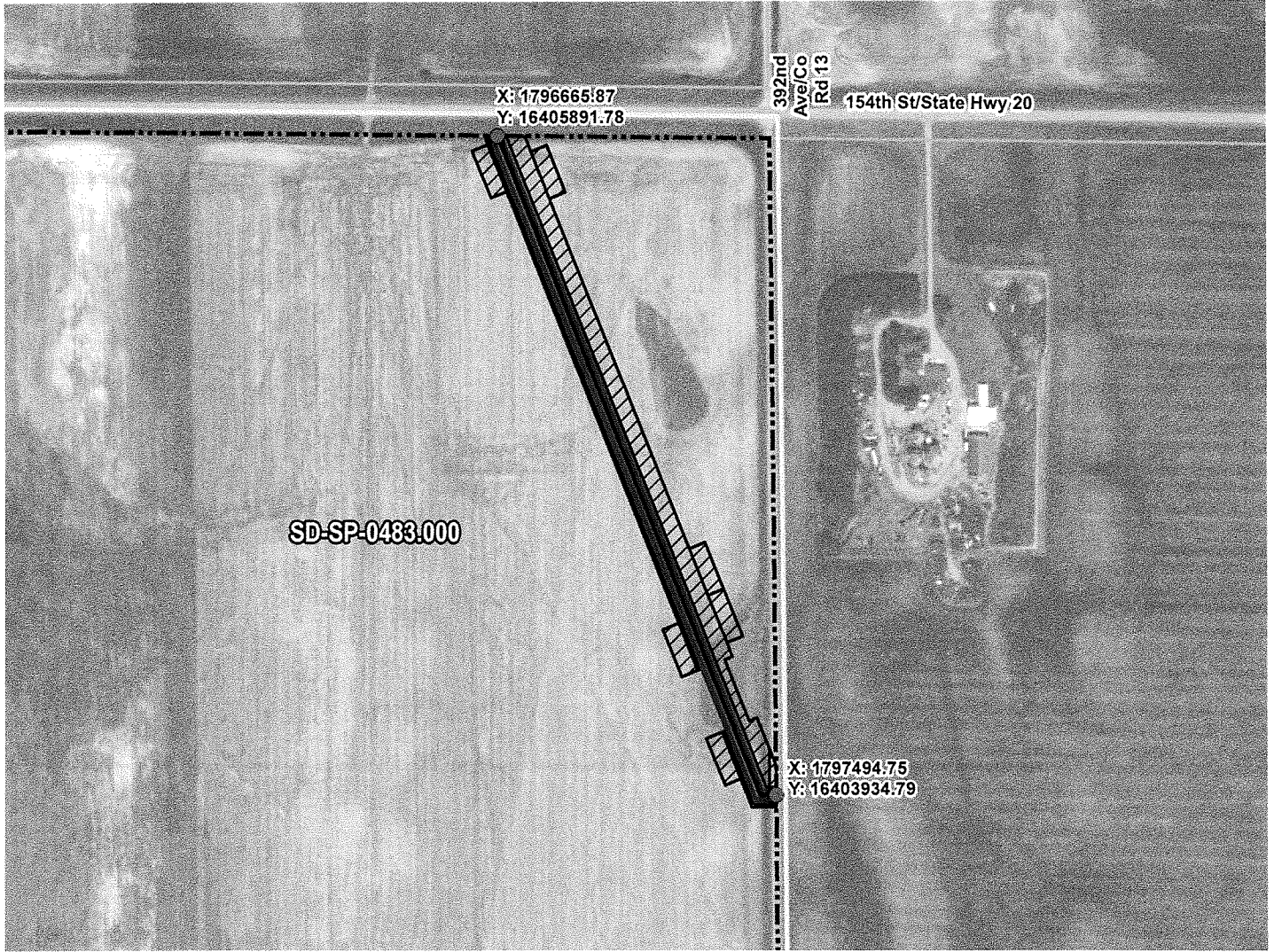
SPINK COUNTY, SOUTH DAKOTA



VICINITY MAP
N.T.S.



SEC. 03 T119N R63W



ROUTING LENGTH = 2155.846 FT +/-
 IMPACTS: PIPELINE EASEMENT = 2.523 AC. +/- / TEMPORARY CONSTRUCTION EASEMENT = 3.799 AC. +/-

Legend

- PROPOSED ROUTE
- PIPELINE EASEMENT
- PARCEL BOUNDARY
- TEMPORARY CONSTRUCTION EASEMENT
- ADJACENT PROPERTIES
- SECTION BOUNDARY
- COUNTY BOUNDARY

NOTES:

1. THIS IS A PRELIMINARY DOCUMENT AND IS INTENDED TO DEPICT THE APPROXIMATE LOCATION OF A PROPOSED PIPELINE EASEMENT.
2. THIS DOCUMENT DOES NOT REPRESENT A LAND SURVEY AND IS NOT INTENDED TO DEPICT THE FINAL ALIGNMENT
3. COORDINATE SYSTEM: UTM ZONE 14 NORTH, NAD83, US SURVEY FEET

PRELIMINARY PIPELINE ROUTE

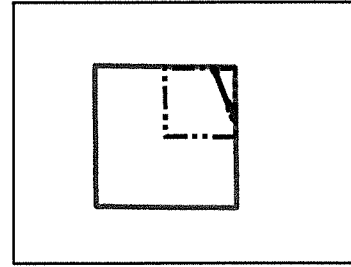
DRAWN BY:	AC	SUMMIT CARBON SOLUTIONS MIDWEST CARBON EXPRESS MYRON O. HAMMER TESTAMENTARY CREDIT SHELTER TRUST TAX ID: 007148 TRACT NUMBER: SD-SP-0483.000
CHECKED BY:	JW	
MAP DATE:	12/16/2021	
SCALE:	1 inch = 484'	
REV NO.	DATE	DESCRIPTION
D	10/25/2022	REVISED WORKSPACE
E	11/18/2022	REVISED WORKSPACE
DRAWING NO. C-MCE-ACQ-SD-SP-0483.000		PROJECT NO. 450959
		SHEET NO. 01 of 01



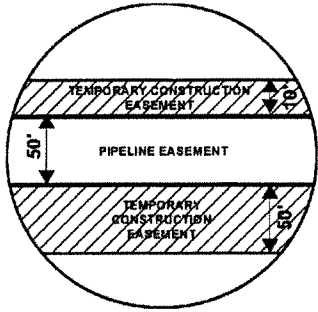
EXHIBIT "B"

PRELIMINARY ROUTE

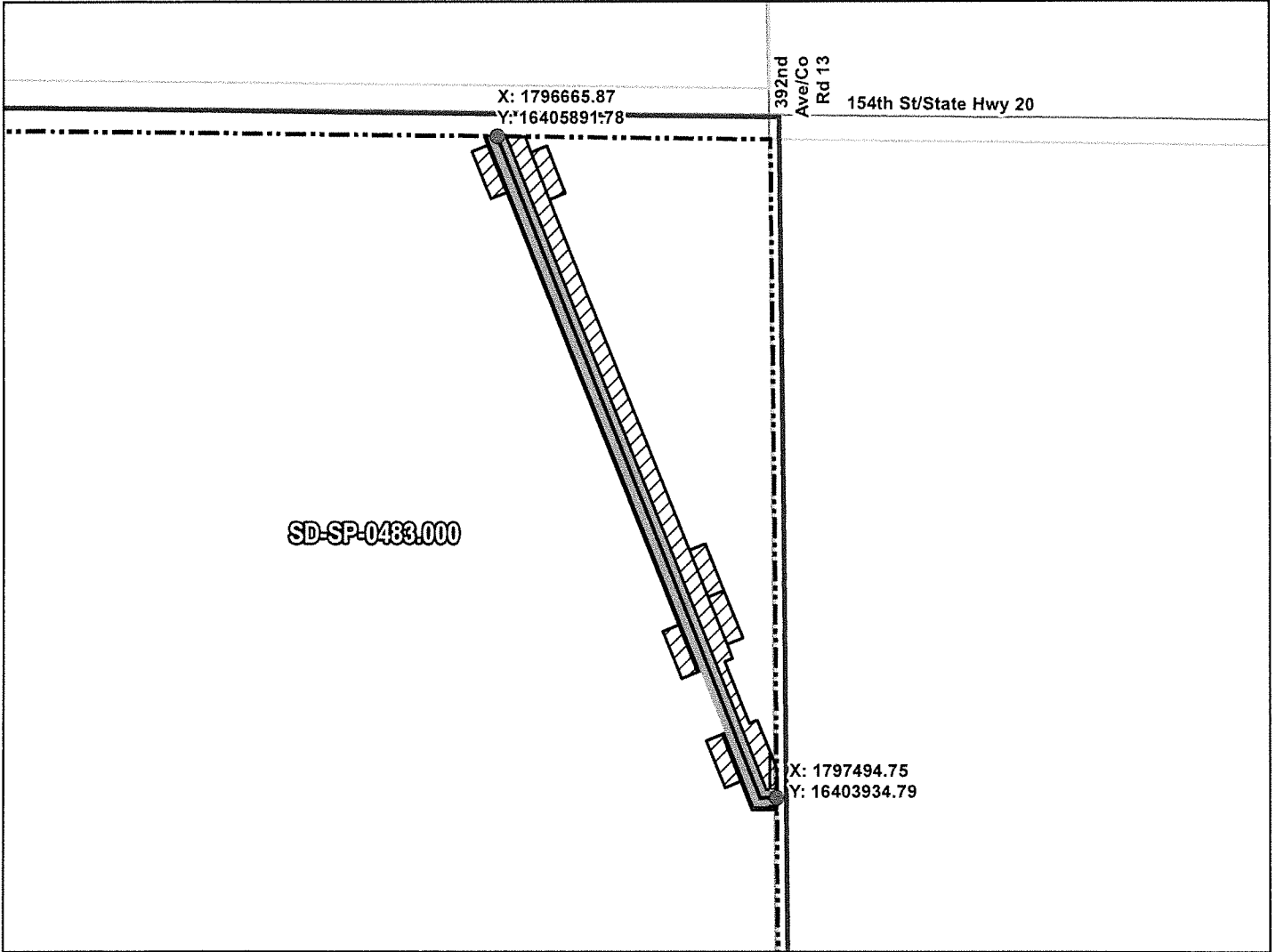
SPINK COUNTY, SOUTH DAKOTA



VICINITY MAP
N.T.S.



SEC. 03 T119N R63W



ROUTING LENGTH = 2155.846 FT +/-

IMPACTS: PIPELINE EASEMENT = 2.523 AC. +/- / TEMPORARY CONSTRUCTION EASEMENT = 3.799 AC. +/-

Legend

- PROPOSED ROUTE
- ROADS
- PARCEL BOUNDARY
- ADJACENT PROPERTIES
- PIPELINE EASEMENT
- TEMPORARY CONSTRUCTION EASEMENT
- SECTION BOUNDARY
- COUNTY BOUNDARY

NOTES:

1. THIS IS A PRELIMINARY DOCUMENT AND IS INTENDED TO DEPICT THE APPROXIMATE LOCATION OF A PROPOSED PIPELINE EASEMENT.
2. THIS DOCUMENT DOES NOT REPRESENT A LAND SURVEY AND IS NOT INTENDED TO DEPICT THE FINAL ALIGNMENT
3. COORDINATE SYSTEM: UTM ZONE 14 NORTH, NAD83, US SURVEY FEET

SIGNATURE: _____ DATE: _____



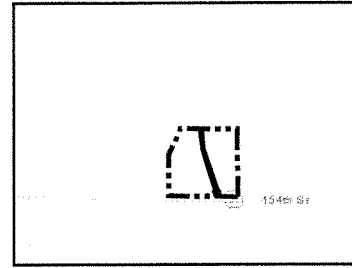
PRELIMINARY PIPELINE ROUTE

DRAWN BY:	AC	SUMMIT CARBON SOLUTIONS MIDWEST CARBON EXPRESS MYRON O. HAMMER TESTAMENTARY CREDIT SHELTER TRUST TAX ID: 007148 TRACT NUMBER: SD-SP-0483.000
CHECKED BY:	JW	
MAP DATE:	12/16/2021	
SCALE:	1 inch = 484'	
REV NO.	DATE	DESCRIPTION
D	10/25/2022	REVISED WORKSPACE
E	11/18/2022	REVISED WORKSPACE
DRAWING NO. BW-MCE-ACQ-SD-SP-0483.000		PROJECT NO. 450959
		SHEET NO. 01 of 01

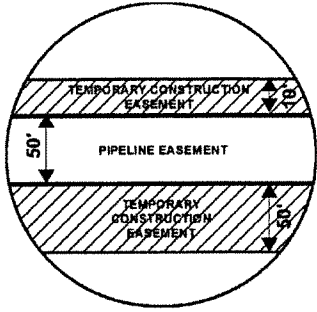
EXHIBIT "B"

PRELIMINARY ROUTE

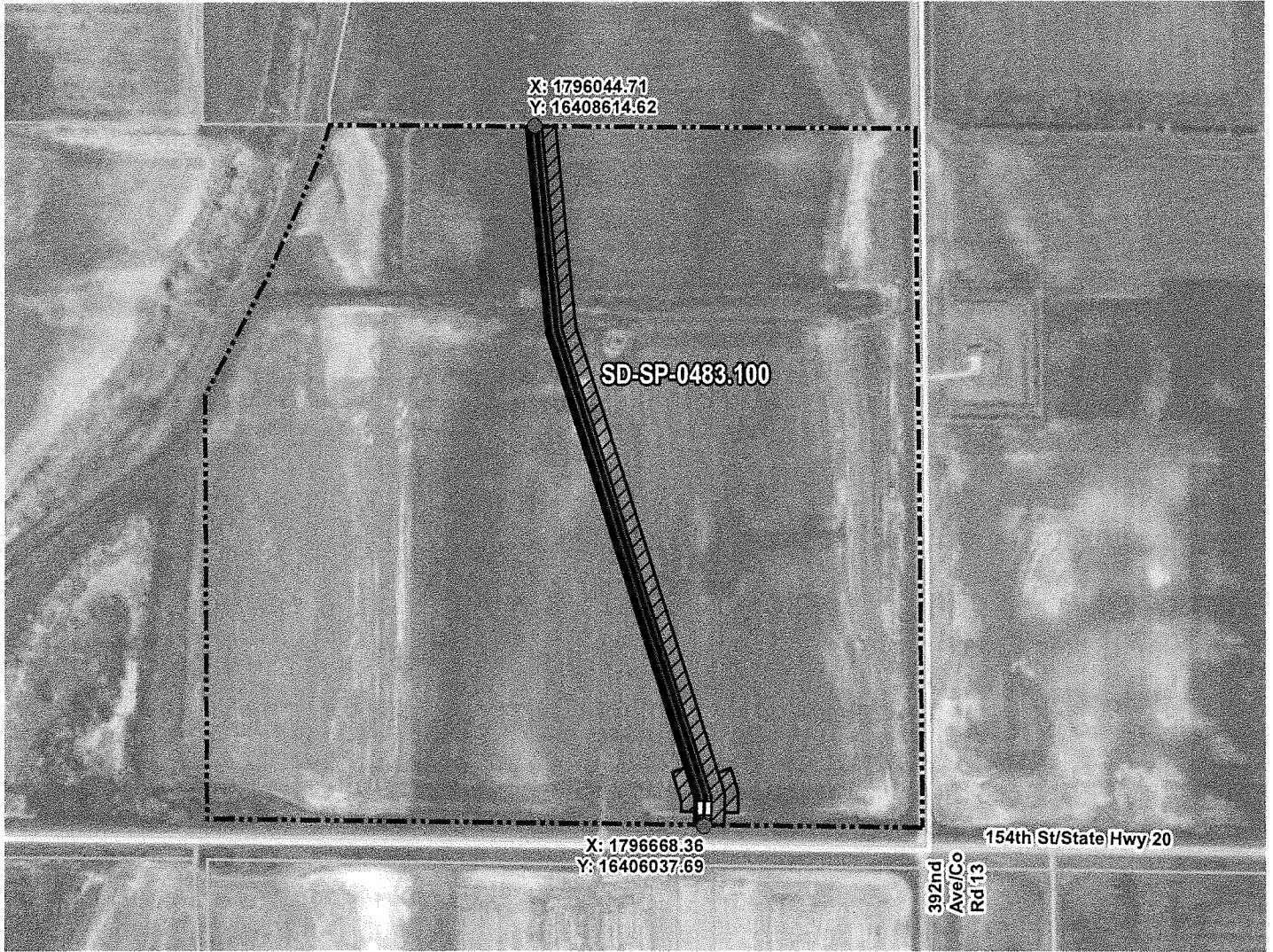
SPINK COUNTY, SOUTH DAKOTA



VICINITY MAP
N.T.S.



SEC. 34 T120N R63W



ROUTING LENGTH = 2660.265 FT +/- / ACCESS EASEMENT LENGTH = 36.513 FT +/-
 IMPACTS: PIPELINE EASEMENT = 3.037 AC. +/- / TEMPORARY CONSTRUCTION EASEMENT = 4.028 AC. +/-

Legend

- PROPOSED ROUTE
- ACCESS EASEMENT
- PARCEL BOUNDARY
- ADJACENT PROPERTIES
- PIPELINE EASEMENT
- TEMPORARY CONSTRUCTION EASEMENT
- SECTION BOUNDARY
- COUNTY BOUNDARY

NOTES:

1. THIS IS A PRELIMINARY DOCUMENT AND IS INTENDED TO DEPICT THE APPROXIMATE LOCATION OF A PROPOSED PIPELINE EASEMENT.
2. THIS DOCUMENT DOES NOT REPRESENT A LAND SURVEY AND IS NOT INTENDED TO DEPICT THE FINAL ALIGNMENT
3. COORDINATE SYSTEM: UTM ZONE 14 NORTH, NAD83, US SURVEY FEET



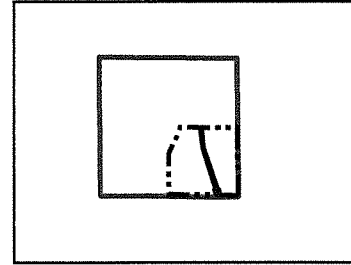
PRELIMINARY PIPELINE ROUTE

DRAWN BY:	AC	SUMMIT CARBON SOLUTIONS MIDWEST CARBON EXPRESS MYRON O. HAMMER TESTAMENTARY CREDIT SHELTER TRUST TAX ID: 004511 TRACT NUMBER: SD-SP-0483.100
CHECKED BY:	JW	
MAP DATE:	1/11/2022	
SCALE:	1 inch = 601'	
REV NO.	DATE	DESCRIPTION
F	6/7/2022	REVISED WORKSPACE
G	11/18/2022	REVISED WORKSPACE
DRAWING NO. C-MCE-ACQ-SD-SP-0483.100		PROJECT NO. 450959 SHEET NO. 01 of 01

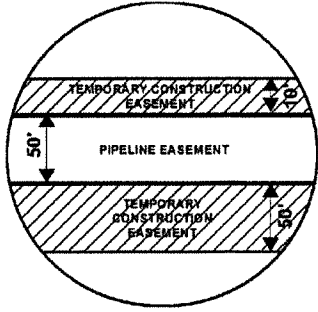
EXHIBIT "B"

PRELIMINARY ROUTE

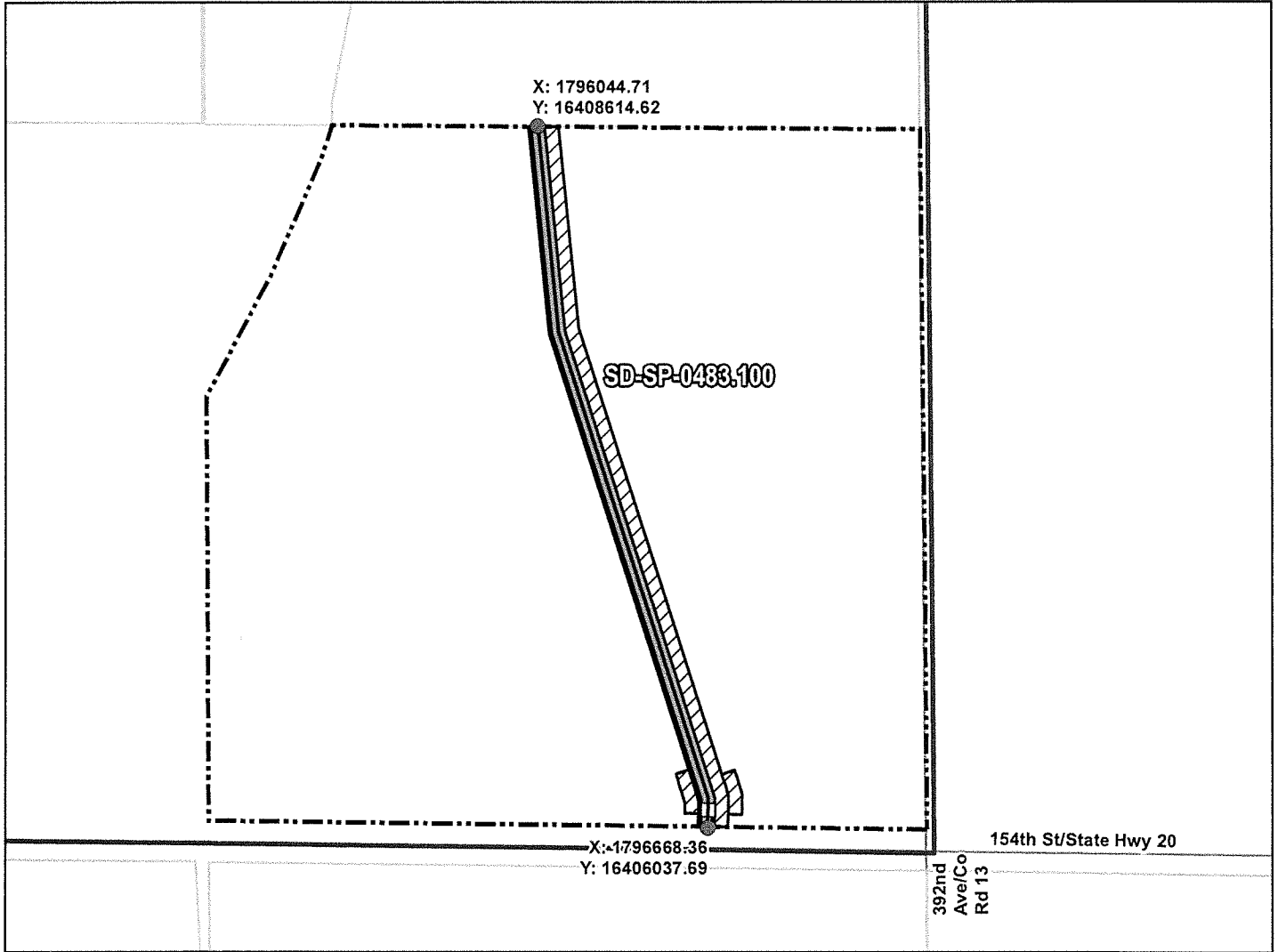
SPINK COUNTY, SOUTH DAKOTA



VICINITY MAP
N.T.S.



SEC. 34 T120N R63W



ROUTING LENGTH = 2660.265 FT +/- / ACCESS EASEMENT LENGTH = 36.513 FT +/-
 IMPACTS: PIPELINE EASEMENT = 3.037 AC. +/- / TEMPORARY CONSTRUCTION EASEMENT = 4.028 AC. +/-

PROPOSED ROUTE	PIPELINE EASEMENT
ACCESS EASEMENT	TEMPORARY CONSTRUCTION EASEMENT
ROADS	SECTION BOUNDARY
PARCEL BOUNDARY	COUNTY BOUNDARY
ADJACENT PROPERTIES	

- NOTES:**
1. THIS IS A PRELIMINARY DOCUMENT AND IS INTENDED TO DEPICT THE APPROXIMATE LOCATION OF A PROPOSED PIPELINE EASEMENT.
 2. THIS DOCUMENT DOES NOT REPRESENT A LAND SURVEY AND IS NOT INTENDED TO DEPICT THE FINAL ALIGNMENT
 3. COORDINATE SYSTEM: UTM ZONE 14 NORTH, NAD83, US SURVEY FEET

SIGNATURE: _____ DATE: _____



PRELIMINARY PIPELINE ROUTE

DRAWN BY: AC		SUMMIT CARBON SOLUTIONS MIDWEST CARBON EXPRESS MYRON O. HAMMER TESTAMENTARY CREDIT SHELTER TRUST TAX ID: 004511 TRACT NUMBER: SD-SP-0483.100
CHECKED BY: JW		
MAP DATE: 1/11/2022		
SCALE: 1 inch = 601'		
REV NO.	DATE	DESCRIPTION
F	6/7/2022	REVISED WORKSPACE
G	11/18/2022	REVISED WORKSPACE
DRAWING NO. BW-MCE-ACQ-SD-SP-0483.100		PROJECT NO. 450959 SHEET NO. 01 of 01

Review the electronic docket. A docket is the continually updated collection of documents filed with the commission for a particular case. Dockets are accessible under the Commission Actions tab on the PUC website, www.puc.sd.gov. Dockets are labeled to correspond with their type and filing date. For example, the Navigator Heartland Greenway Carbon Dioxide Pipeline docket is HP22-002; HP for hydrocarbon and carbon dioxide pipeline, 22 for the year 2022 and 002 to indicate it was the second hydrocarbon and carbon dioxide pipeline docket filed with the commission in 2022.

Attend a public input meeting. The PUC will hold a public input meeting or meetings on a pipeline siting case, with 30 days notice, as physically close as practical to the proposed route. At the meeting, the applicant describes its project and the public may ask questions and offer comment. Commissioners and staff attend this public meeting.

Submit comments. Members of the public are encouraged to submit written comments about an active siting case to the PUC. These ***informal*** public comments are reviewed and considered by the PUC commissioners and staff. Comments should include the docket number or siting project name, commenter's full name, mailing address, e-mail address and phone number. These comments should be emailed to puc@state.sd.us or mailed or hand-delivered to PUC, 500 E. Capitol Ave., Pierre, SD 57501. Comments are posted in the "Comments" section of the docket within a reasonable time after having been received. The commenter's name, city and state will be posted along with their comment. Comments received from businesses, organizations or other commercial entities (on letterhead, for example) will include the full contact information for such.

Please follow these guidelines when submitting written comments to the PUC:

- For comments sent by email, the maximum file size is 10 MB. If you have questions, please contact South Dakota PUC staff at 605-773-3201 (Monday – Friday, 8 a.m. – 5 p.m. Central Time).
- For comments sent by U.S. mail or hand delivered, no more than twenty (20) 8.5" x 11" pages, including attachments and support materials, should be submitted with a comment. Sheets with printing on both sides are counted as two pages.
- A reference document, article or other attachment not written by the person

commenting should clearly identify the source of the content. The inclusion of any copyrighted material without accompanying proof of the commenter's explicit right to redistribute that material will result in the material being rejected.

- In instances where individual comments are deemed to be a duplicate or near duplicate copies of a mass message campaign, the PUC will post only a representative sample and list the name, city and state of the commenter.
- Comments containing threatening language or profanity will be rejected.
- Multimedia submissions such as audio and video files will not be accepted as written comments.
- Electronic links will not be accepted.

Become an intervenor. Individuals who wish to be ***formal*** parties in a siting case may apply to the commission for intervenor status. Intervention deadline is clearly indicated within the docket. Intervention is appropriate for people who intend to actively participate in the case through legal motions, discovery (requests for facts or documents), the written preparation and presentation of actual evidence, and in-person participation in a formal hearing. Intervenors are legally obligated to respond to discovery from other parties and to submit to cross-examination at a formal hearing. Individuals seeking only to follow the progress of a siting case or to offer comments for the PUC's consideration need not become intervenors.

Communicate on record. Verbal communication between a commissioner and a person with an interest in a matter before the commission that does not occur in a public forum or as part of the official record should be avoided. Those who communicate in writing with a commissioner about an open or imminent docket matter should understand that their comments will become part of the official record and subject to review by all parties and the public. Likewise, comments made at a PUC public proceeding or submitted to the commission relative to a docket matter become part of the record, open to review by all parties and the public. Because commissioners have a decision-making role in docket matters, any discussion with a commissioner about an open or imminent docket must take place in an open forum, such as a public meeting, with notice given to all parties.