

# **Attachment No. 13**

# LAND RECLAMATION of the Bison Pipeline

TRANSCANADA'S BISON PIPELINE in  
Montana 04/12/2011

Pictures: Bob Zellar – Billing Gazette  
Lincoln Star Journal

A cattleguard damaged during installation of the Bison high pressure gas pipeline in southeast Montana 04/12/2011



Blowing and blown soil on Robert Rusley's property on the Bison high pressure gas pipeline right of way in southeast Montana. 10/27/2010

152



A pipeline sign lies fallen in a trench left after the soil over the Bison pipeline sunk in spring on Robert Rusley's property in southeast Montana 04/12/2011



One sign has fallen while another leans in the soft soil on the Bison high pressure gas pipeline right of way in southeast Montana 04/12/2011



Janelle Reiger walks on a concrete creek crossing damaged during installation of the Bison high pressure gas pipeline in southeast Montana 04/12/2011



Janelle Reiger stand in a trench left after the soil over the Bison pipeline sunk this spring on Wade Klauzer's property in southeast Montana 04/12/2011





Wade Kllauzer stands by a trench left after the soil over the Bison pipeline sunk this spring on his property in southeast Montana 04/12/2011



A pipeline sign lies fallen in a trench left after the soil over the Bison pipeline  
sunk this spring on Robert Rusley's property in southeast Montana  
04/12/2011



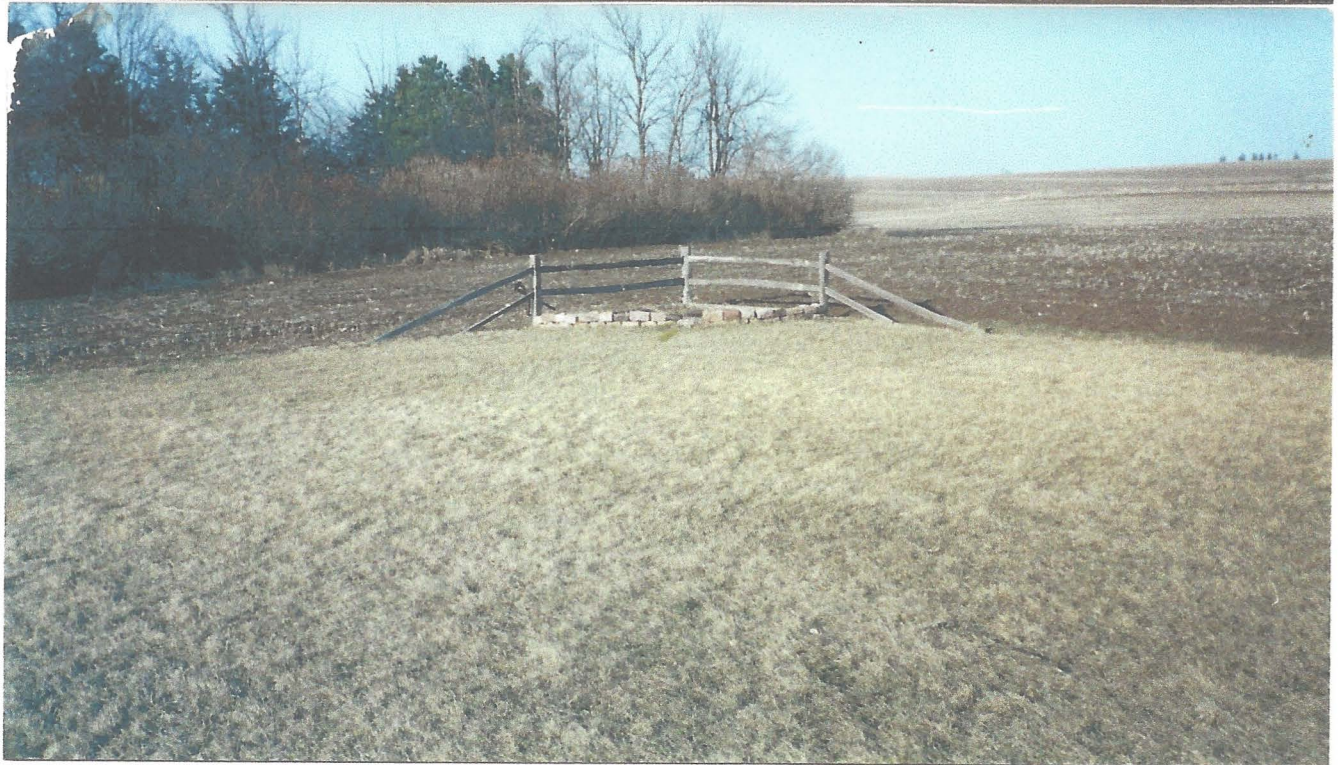
Water erosion on Wade Klauzer's property on the Bison high pressure gas pipeline right of way in southeast Montana 04/12/2011



Janelle Reiger walks by a trench left after the soil over the Bison pipeline sunk this spring in southeast Montana 04/12/2011



This picture was taken in 2002 after we added the split rail fence in the front and corner posts in the back. The second picture is what our easterly view was prior to the Dakota Access Pipeline shut off valve.





View of the Dakota Access Pipeline shut-off valve



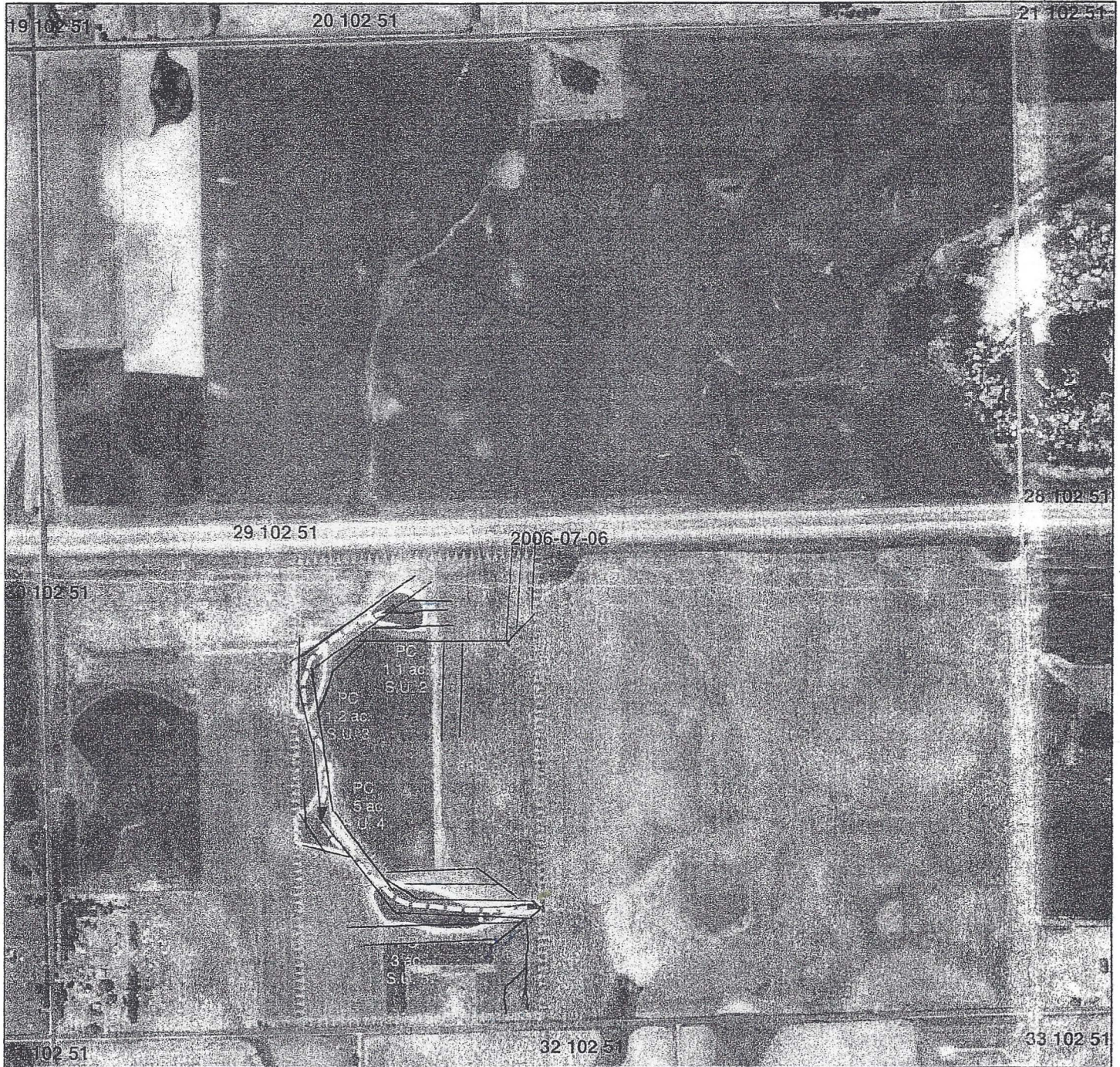
edge of my property line

# Certified Wetland Determination

Field Office: Sioux Falls FO  
 Certified By: Nathan Blankers  
 Legal Desc: 29-102-51

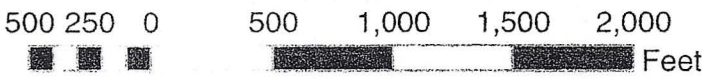
*Martin Stoffe van M+S Drainage*  
*712-540-1262*

Agency: USDA-NRCS  
 Date: 8-20-15  
 Tract: 1582



**Legend**

- Certified Wetland Determination Boundary
- Wetlands
- Wetlands
- ▶▶▶ Ditch
- Tile



W Wetland  
 FW Farmed Wetland Drained or modified & cropped prior to 12-23-1985, but still meets wetland criteria  
 PC Prior Converted  
 NW Non Wetland

See NRCS CPA-O26E for definitions and additional info.

6000'-6" 9000.0  
 8800'-4" 11440.0  
 14 Corn 490.0  
 2 outlets 200.0  
 Exc. Tax 21090.0  
 508.2  
 21598.2

N