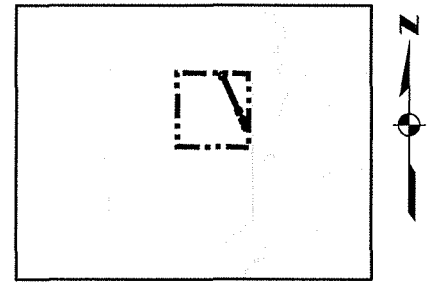
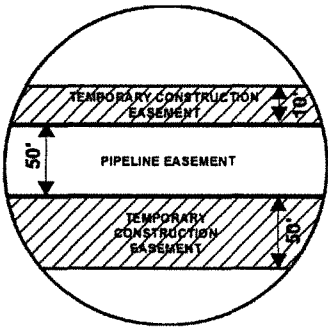


Attachment No. 1

EXHIBIT "B"

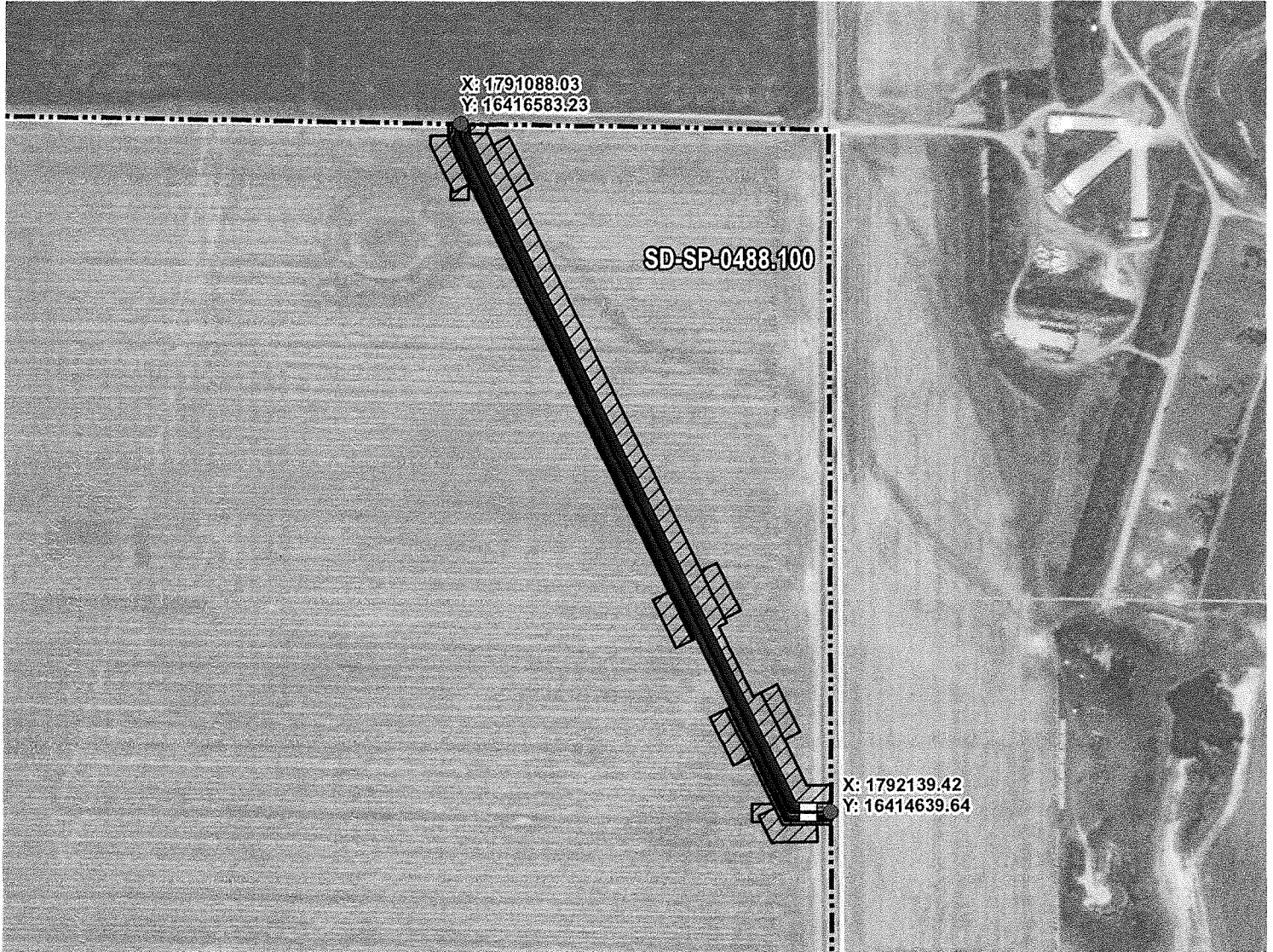
PRELIMINARY ROUTE

SPINK COUNTY, SOUTH DAKOTA



VICINITY MAP
N.T.S.

SEC. 28 T120N R63W



ROUTING LENGTH = 2278.056 FT +/- / ACCESS EASEMENT LENGTH = 27.875 FT +/-
 IMPACTS: PIPELINE EASEMENT = 2.602 AC. +/- / TEMPORARY CONSTRUCTION EASEMENT = 4.212 AC. +/-

PROPOSED ROUTE	PIPELINE EASEMENT
ACCESS EASEMENT	TEMPORARY CONSTRUCTION EASEMENT
PARCEL BOUNDARY	SECTION BOUNDARY
ADJACENT PROPERTIES	COUNTY BOUNDARY

NOTES:

1. THIS IS A PRELIMINARY DOCUMENT AND IS INTENDED TO DEPICT THE APPROXIMATE LOCATION OF A PROPOSED PIPELINE EASEMENT.
2. THIS DOCUMENT DOES NOT REPRESENT A LAND SURVEY AND IS NOT INTENDED TO DEPICT THE FINAL ALIGNMENT
3. COORDINATE SYSTEM: UTM ZONE 14 NORTH, NAD83, US SURVEY FEET

PRELIMINARY PIPELINE ROUTE

DRAWN BY:	AC	SUMMIT CARBON SOLUTIONS MIDWEST CARBON EXPRESS FRANCOLI FAMILY LIMITED PARTNERSHIP TAX ID: 005234 TRACT NUMBER: SD-SP-0488.100
CHECKED BY:	JW	
MAP DATE:	12/16/2021	
SCALE:	1 inch = 463'	
REV NO.	DATE	DESCRIPTION
G	7/18/2022	REVISED WORKSPACE
H	11/18/2022	REVISED WORKSPACE
DRAWING NO.		PROJECT NO. 150950 SHEET NO. 01 of 01

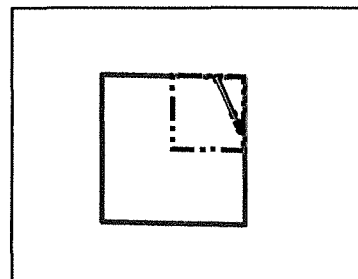
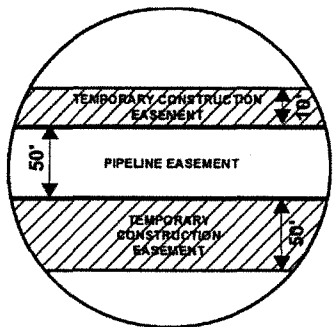


SUMMIT CARBON

EXHIBIT "B"

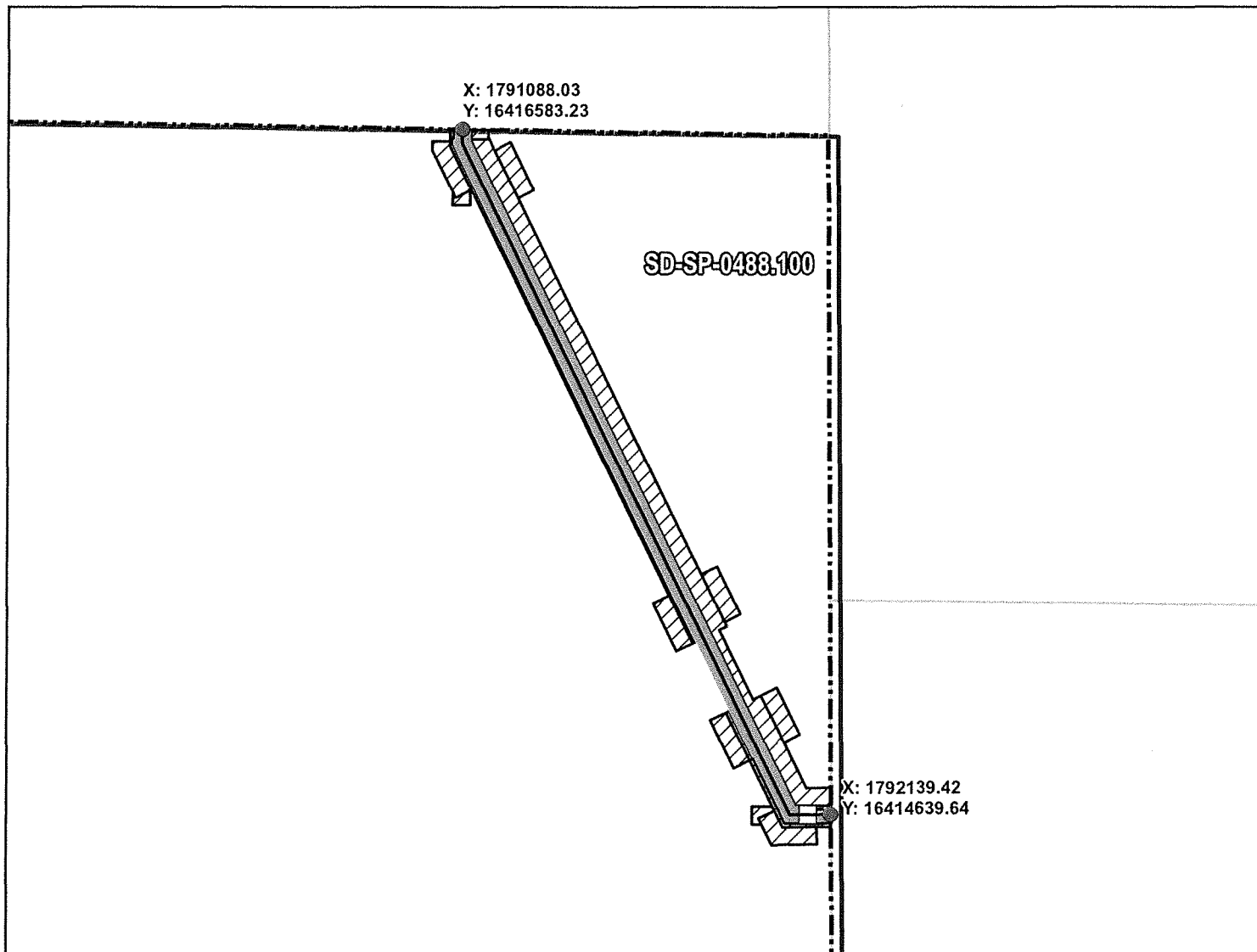
PRELIMINARY ROUTE

SPINK COUNTY, SOUTH DAKOTA



VICINITY MAP
N.T.S.

SEC. 28 T120N R63W



ROUTING LENGTH = 2278.056 FT +/- / ACCESS EASEMENT LENGTH = 27.875 FT +/-
 IMPACTS: PIPELINE EASEMENT = 2.602 AC. +/- / TEMPORARY CONSTRUCTION EASEMENT = 4.212 AC. +/-

Legend

- PROPOSED ROUTE
- ACCESS EASEMENT
- ROADS
- PARCEL BOUNDARY
- ADJACENT PROPERTIES
- PIPELINE EASEMENT
- TEMPORARY CONSTRUCTION EASEMENT
- SECTION BOUNDARY
- COUNTY BOUNDARY

NOTES:

1. THIS IS A PRELIMINARY DOCUMENT AND IS INTENDED TO DEPICT THE APPROXIMATE LOCATION OF A PROPOSED PIPELINE EASEMENT.
2. THIS DOCUMENT DOES NOT REPRESENT A LAND SURVEY AND IS NOT INTENDED TO DEPICT THE FINAL ALIGNMENT
3. COORDINATE SYSTEM: UTM ZONE 14 NORTH, NAD83, US SURVEY FEET

SIGNATURE: _____ DATE: _____



SUMMIT CARBON

PRELIMINARY PIPELINE ROUTE

DRAWN BY:	AC	SUMMIT CARBON SOLUTIONS MIDWEST CARBON EXPRESS FRANCOLI FAMILY LIMITED PARTNERSHIP TAX ID: 005234 TRACT NUMBER: SD-SP-0488.100
CHECKED BY:	JW	
MAP DATE:	12/16/2021	
SCALE: 1 inch = 463'		
REV NO.	DATE	DESCRIPTION
G	7/18/2022	REVISED WORKSPACE
H	11/18/2022	REVISED WORKSPACE