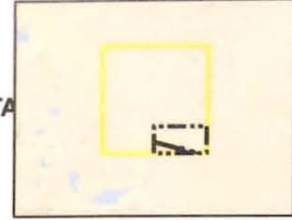
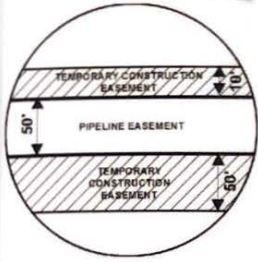


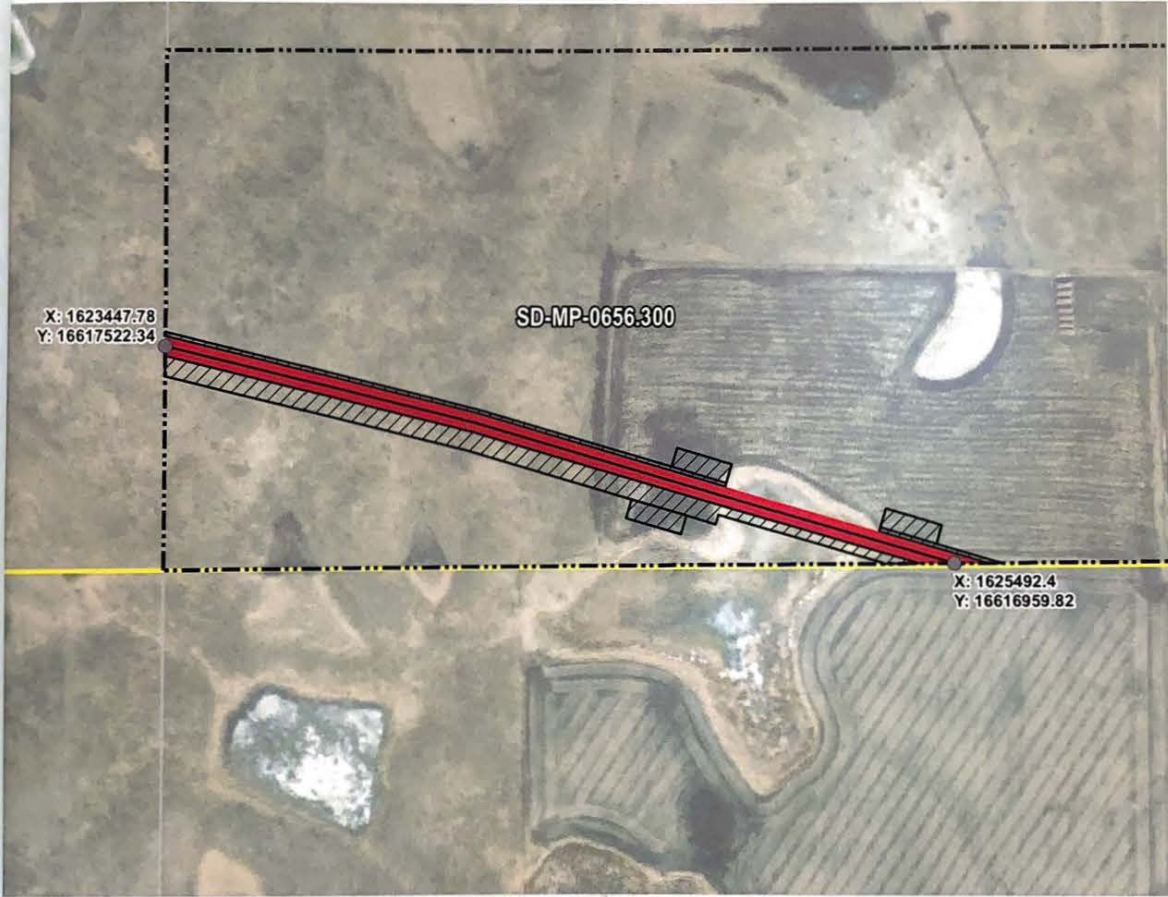
Attachment No. 1

EXHIBIT "B"
PRELIMINARY ROUTE
 MCPHERSON COUNTY, SOUTH DAKOTA



VICINITY MAP
N.T.S.

SEC. 08 T126N R68W



ROUTING LENGTH = 2121.095 FT +/-
 IMPACTS: PIPELINE EASEMENT = 2.435 AC. +/- / TEMPORARY CONSTRUCTION EASEMENT = 2.926 AC. +/-

Legend

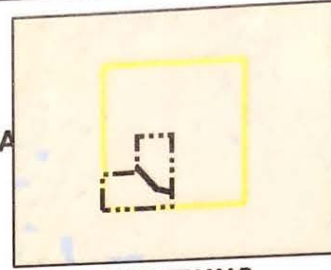
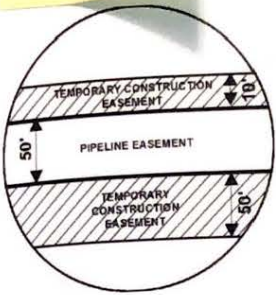
PROPOSED ROUTE	PIPELINE EASEMENT
PARCEL BOUNDARY	TEMPORARY CONSTRUCTION EASEMENT
ADJACENT PROPERTIES	SECTION BOUNDARY
	COUNTY BOUNDARY

- NOTES:**
1. THIS IS A PRELIMINARY DOCUMENT AND IS INTENDED TO DEPICT THE APPROXIMATE LOCATION OF A PROPOSED PIPELINE EASEMENT.
 2. THIS DOCUMENT DOES NOT REPRESENT A LAND SURVEY AND IS NOT INTENDED TO DEPICT THE FINAL ALIGNMENT
 3. COORDINATE SYSTEM: UTM ZONE 14 NORTH, NAD83, US SURVEY FEET



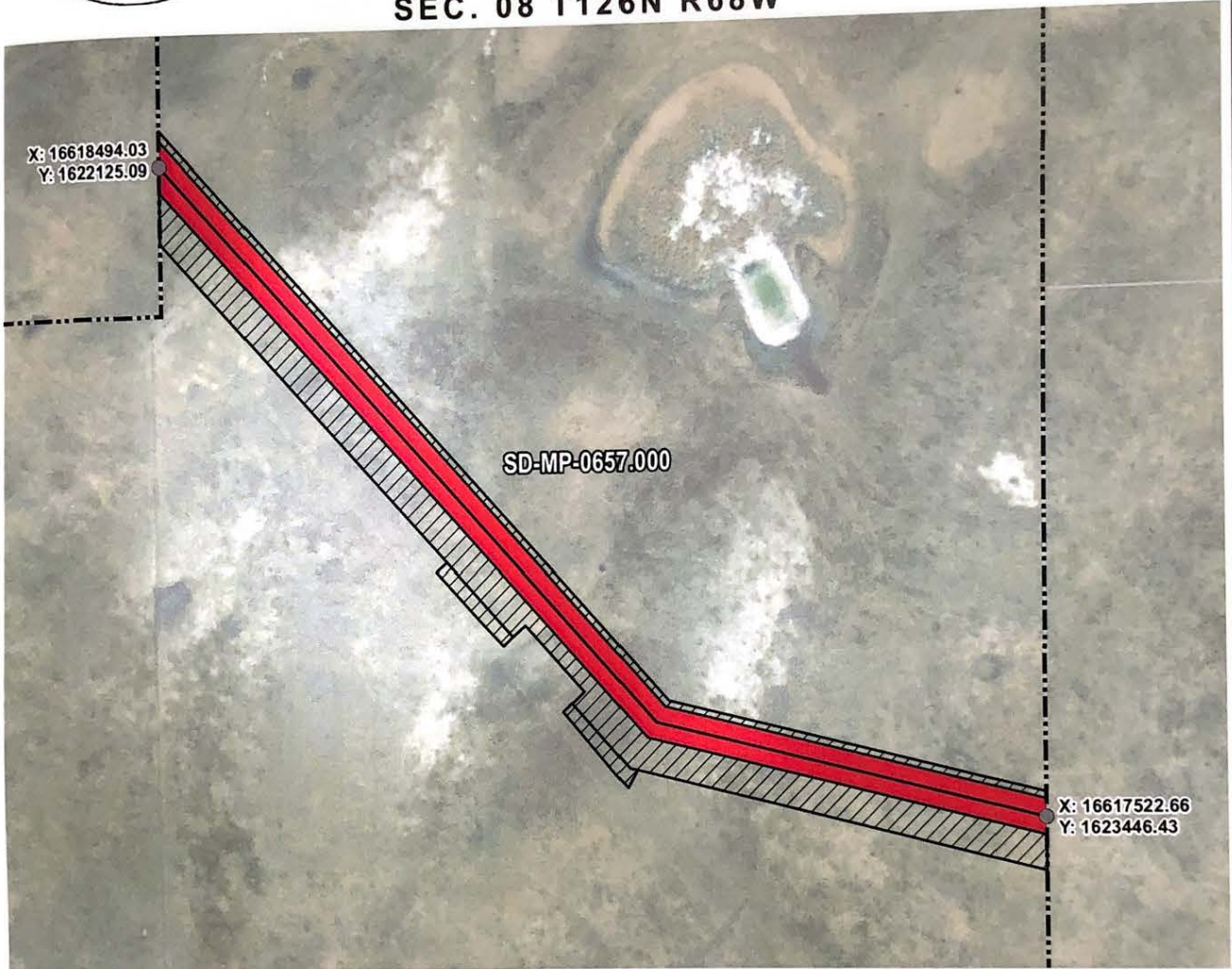
PRELIMINARY PIPELINE ROUTE		
DRAWN BY:	AC	SUMMIT CARBON SOLUTIONS MIDWEST CARBON EXPRESS COLIN LEIGH HOFFMAN
CHECKED BY:	JW	
MAP DATE:	12/17/2021	
SCALE: 1 inch = 390'		TAX ID: 1144 TRACT NUMBER: SD-MP-0656.300
REV NO.	DATE	DESCRIPTION
B	3/8/2022	REVISED WORKSPACE
C	7/18/2022	REVISED WORKSPACE
DRAWING NO. C-MCE-ACQ-SD-MP-0656.300	PROJECT NO. 450959	SHEET NO. 01 of 01

EXHIBIT "B" PRELIMINARY ROUTE MCPHERSON COUNTY, SOUTH DAKOTA



VICINITY MAP
N.T.S.

SEC. 08 T126N R68W



ROUTING LENGTH = 1708.472 FT +/-

IMPACTS: PIPELINE EASEMENT = 1.961 AC. +/- / TEMPORARY CONSTRUCTION EASEMENT = 2.404 AC. +/-

Legend

- PROPOSED ROUTE
- ▬ PARCEL BOUNDARY
- ADJACENT PROPERTIES
- ▬ PIPELINE EASEMENT
- ▨ TEMPORARY CONSTRUCTION EASEMENT
- ▭ SECTION BOUNDARY
- ▭ COUNTY BOUNDARY

NOTES:

1. THIS IS A PRELIMINARY DOCUMENT AND IS INTENDED TO DEPICT THE APPROXIMATE LOCATION OF A PROPOSED PIPELINE EASEMENT.
2. THIS DOCUMENT DOES NOT REPRESENT A LAND SURVEY AND IS NOT INTENDED TO DEPICT THE FINAL ALIGNMENT
3. COORDINATE SYSTEM: UTM ZONE 14 NORTH, NAD83, US SURVEY FEET

PRELIMINARY PIPELINE ROUTE

DRAWN BY: AC		SUMMIT CARBON SOLUTIONS MIDWEST CARBON EXPRESS COLIN HOFFMAN
CHECKED BY: JW		
MAP DATE: 12/17/2021		
SCALE: 1 inch = 238'		TAX ID: 1141 TRACT NUMBER: SD-MP-0657.000
REV NO.	DATE	DESCRIPTION
A	12/17/2021	INITIAL ISSUE
B	3/8/2022	REVISED WORKSPACE
DRAWING NO. C-MCE-ACQ-SD-MP-0657.000		PROJECT NO. 450959 SHEET NO. 01 of 0



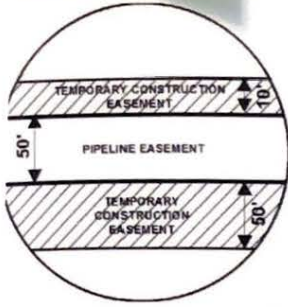
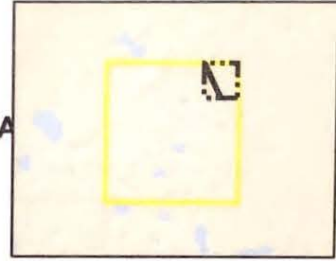


EXHIBIT "B"

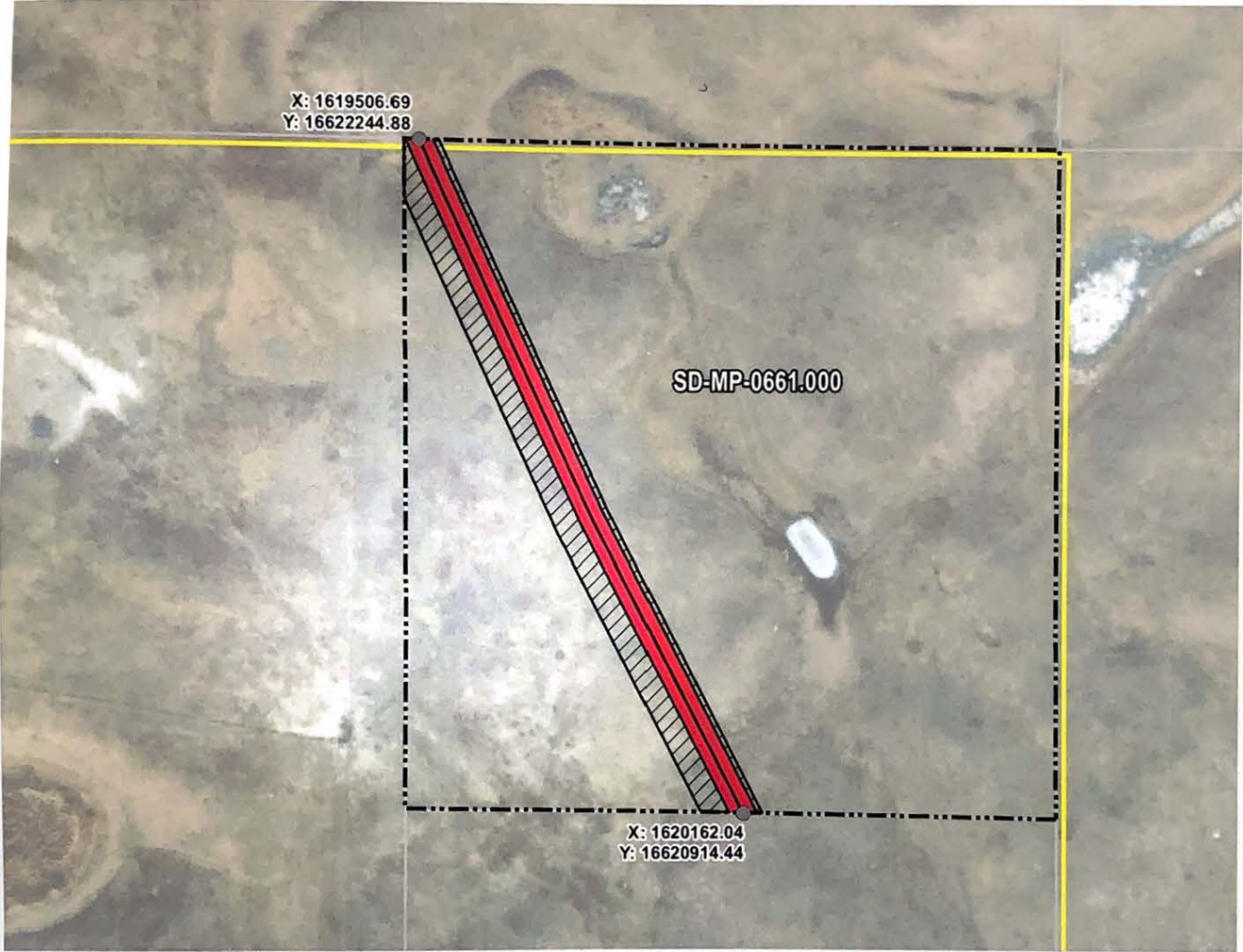
PRELIMINARY ROUTE

MCPHERSON COUNTY, SOUTH DAKOTA



VICINITY MAP
N.T.S.

SEC. 07 T126N R68W



ROUTING LENGTH = 1481.902 FT +/-
IMPACTS: PIPELINE EASEMENT = 1.701 AC. +/- / TEMPORARY CONSTRUCTION EASEMENT = 1.973 AC. +/-

Legend

- PROPOSED ROUTE
- PARCEL BOUNDARY
- ADJACENT PROPERTIES
- PIPELINE EASEMENT
- TEMPORARY CONSTRUCTION EASEMENT
- SECTION BOUNDARY
- COUNTY BOUNDARY

NOTES:

1. THIS IS A PRELIMINARY DOCUMENT AND IS INTENDED TO DEPICT THE APPROXIMATE LOCATION OF A PROPOSED PIPELINE EASEMENT.
2. THIS DOCUMENT DOES NOT REPRESENT A LAND SURVEY AND IS NOT INTENDED TO DEPICT THE FINAL ALIGNMENT
3. COORDINATE SYSTEM: UTM ZONE 14 NORTH, NAD83, US SURVEY FEET



PRELIMINARY PIPELINE ROUTE

DRAWN BY:	AC	SUMMIT CARBON SOLUTIONS MIDWEST CARBON EXPRESS COLIN LEIGH HOFFMAN TAX ID: 1131 TRACT NUMBER: SD-MP-0661.000
CHECKED BY:	JW	
MAP DATE:	12/17/2021	
SCALE:	1 inch = 321'	
REV NO.	DATE	DESCRIPTION
C	5/24/2022	REVISED WORKSPACE
D	5/27/2022	REVISED WORKSPACE
DRAWING NO. C-MCE-ACQ-SD-MP-0661.000		PROJECT NO. 450959 SHEET NO. 01 of 01

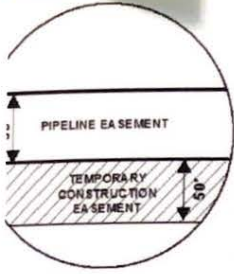
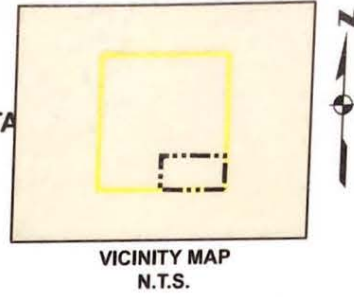
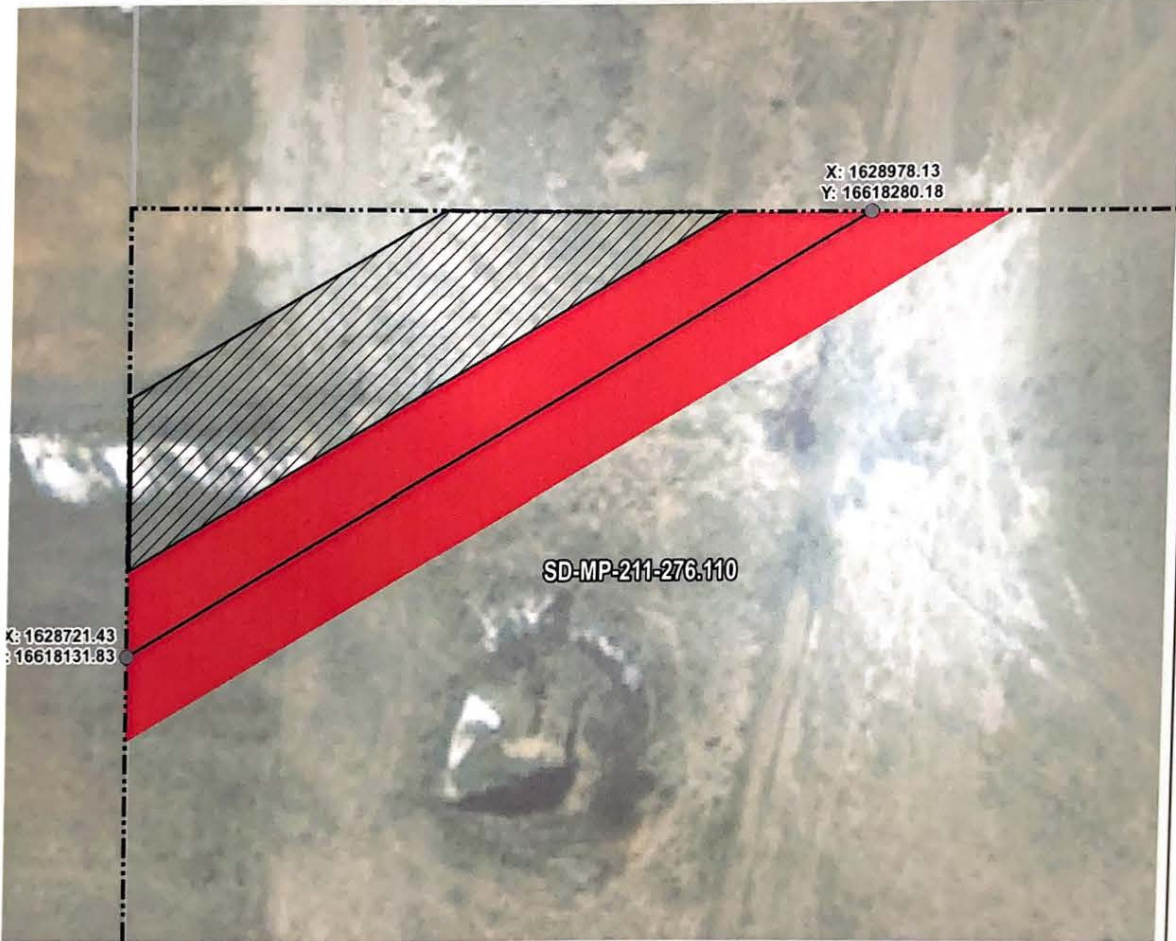


EXHIBIT "B" PRELIMINARY ROUTE MCPHERSON COUNTY, SOUTH DAKOTA



SEC. 09 T126N R68W



PIPELINE LENGTH = 296.479 FT +/-
TOTALS: PIPELINE EASEMENT = 0.34 AC. +/- / TEMPORARY CONSTRUCTION EASEMENT = 0.21 AC. +/-

- PROPOSED ROUTE █ PIPELINE EASEMENT
- PARCEL BOUNDARY TEMPORARY CONSTRUCTION EASEMENT
- ADJACENT PROPERTIES SECTION BOUNDARY
- COUNTY BOUNDARY

NOTES:
THIS IS A PRELIMINARY DOCUMENT AND IS INTENDED TO DEPICT THE PROXIMATE LOCATION OF A PROPOSED PIPELINE EASEMENT. THIS DOCUMENT DOES NOT REPRESENT A LAND SURVEY AND IS NOT INTENDED TO DEPICT THE FINAL ALIGNMENT
COORDINATE SYSTEM: UTM ZONE 14 NORTH, NAD83, US SURVEY FEET

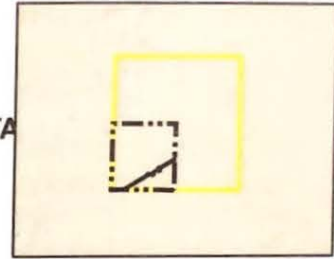
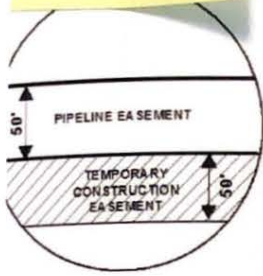


PRELIMINARY PIPELINE ROUTE		
DRAWN BY:	AC	SUMMIT CARBON SOLUTIONS MIDWEST CARBON EXPRESS COLIN L HOFFMAN TAX ID: 1149 TRACT NUMBER: SD-MP-211-276.110
CHECKED BY:	JW	
MAP DATE:	3/8/2022	
SCALE: 1 inch = 54'		
REV NO.	DATE	DESCRIPTION
A	3/8/2022	INITIAL ISSUE
B	8/11/2022	REVISED WORKSPACE
DRAWING NO. C-MCE-ACQ-SD-MP-211-276.110		PROJECT NO. 450959 SHEET NO. 01 of 01

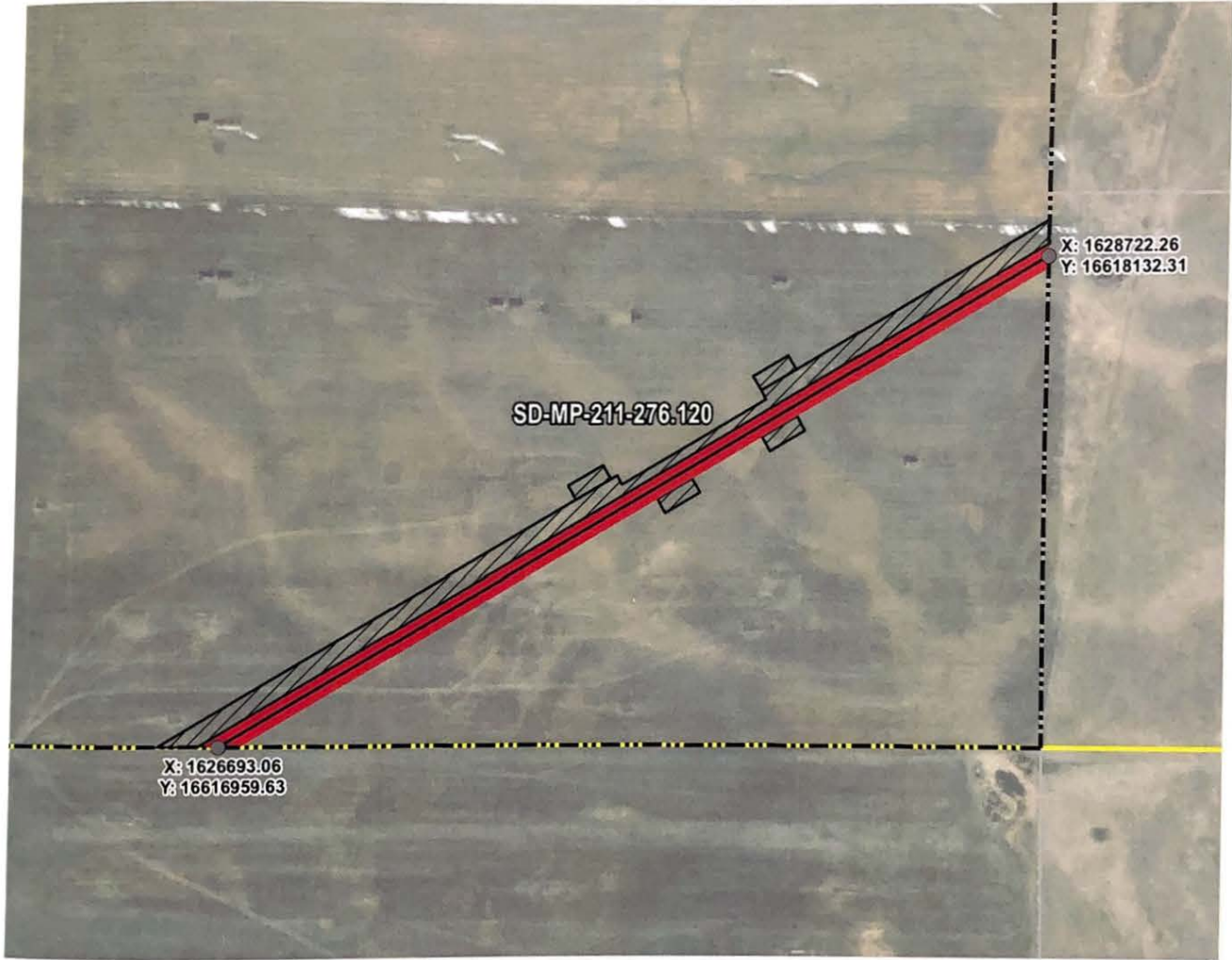
EXHIBIT "B"

PRELIMINARY ROUTE

MCPHERSON COUNTY, SOUTH DAKOTA



SEC. 09 T126N R68W



ROUTING LENGTH = 2343.679 FT +/-

FACTS: PIPELINE EASEMENT = 2.69 AC. +/- / TEMPORARY CONSTRUCTION EASEMENT = 2.953 AC. +/-

Legend

- PROPOSED ROUTE
- TEMPORARY CONSTRUCTION EASEMENT
- PARCEL BOUNDARY
- SECTION BOUNDARY
- ADJACENT PROPERTIES
- COUNTY BOUNDARY
- PIPELINE EASEMENT
- TEMPORARY CONSTRUCTION EASEMENT
- SECTION BOUNDARY
- COUNTY BOUNDARY

NOTES:

1. THIS IS A PRELIMINARY DOCUMENT AND IS INTENDED TO DEPICT THE APPROXIMATE LOCATION OF A PROPOSED PIPELINE EASEMENT.
2. THIS DOCUMENT DOES NOT REPRESENT A LAND SURVEY AND IS NOT INTENDED TO DEPICT THE FINAL ALIGNMENT
3. COORDINATE SYSTEM: UTM ZONE 14 NORTH, NAD83, US SURVEY FEET

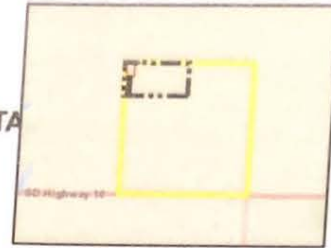
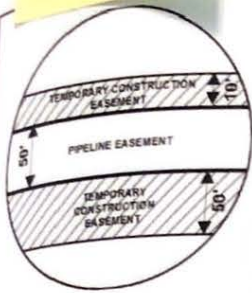


SUMMIT CARBON SOLUTIONS

PRELIMINARY PIPELINE ROUTE

DRAWN BY: AC		SUMMIT CARBON SOLUTIONS MIDWEST CARBON EXPRESS COLIN L HOFFMAN TAX ID: 1148 TRACT NUMBER: SD-MP-211-276.120
CHECKED BY: JW		
MAP DATE: 3/8/2022		
SCALE: 1 inch = 393'		
REV NO.	DATE	DESCRIPTION
B	7/18/2022	REVISED WORKSPACE
C	8/11/2022	REVISED WORKSPACE
DRAWING NO. C-MCE-ACQ-SD-MP-211-276.120		PROJECT NO. 450959 SHEET NO. 01 of 0

EXHIBIT "B"
PRELIMINARY ROUTE
 MCPHERSON COUNTY, SOUTH DAKOTA



VICINITY MAP
 N.T.S.

SEC. 16 T126N R68W



ROUTING LENGTH = 2226.482 FT +/- / ACCESS EASEMENT LENGTH = 40.816 FT +/-
 IMPACTS: PIPELINE EASEMENT = 2.52 AC. +/- / TEMPORARY CONSTRUCTION EASEMENT = 1.159 AC. +/- / PUMP STATION EASEMENT = 4.001 AC. +/-

Legend

- PROPOSED ROUTE
- - - ACCESS EASEMENT
- ▭ PARCEL BOUNDARY
- ▭ ADJACENT PROPERTIES
- ▭ PIPELINE EASEMENT
- ▨ TEMPORARY CONSTRUCTION EASEMENT
- ▭ SECTION BOUNDARY
- ▭ COUNTY BOUNDARY
- ▭ PUMP STATION

NOTES:

1. THIS IS A PRELIMINARY DOCUMENT AND IS INTENDED TO DEPICT THE APPROXIMATE LOCATION OF A PROPOSED PIPELINE EASEMENT.
2. THIS DOCUMENT DOES NOT REPRESENT A LAND SURVEY AND IS NOT INTENDED TO DEPICT THE FINAL ALIGNMENT
3. COORDINATE SYSTEM: UTM ZONE 14 NORTH, NAD83, US SURVEY FEET



SUMMIT CARBON SOLUTIONS

PRELIMINARY PIPELINE ROUTE

DRAWN BY: AC

CHECKED BY: JW

MAP DATE: 3/8/2022

SCALE: 1 inch = 307'

REV NO. DATE

E 7/5/2022

F 8/11/2022

SUMMIT CARBON SOLUTIONS
 MIDWEST CARBON EXPRESS
 COLIN LEIGH HOFFMAN

TAX ID: 1184
 TRACT NUMBER: SD-MP-0653.110

DESCRIPTION

REVISED WORKSPACE

REVISED WORKSPACE

DRAWING NO. C-MCE-ACQ-SD-MP-0653.110

PROJECT NO. 450959

SHEET NO. 01 of 0