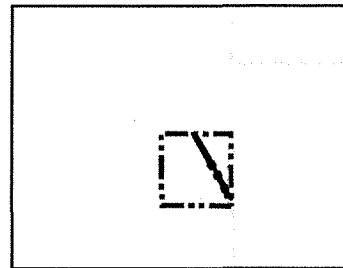
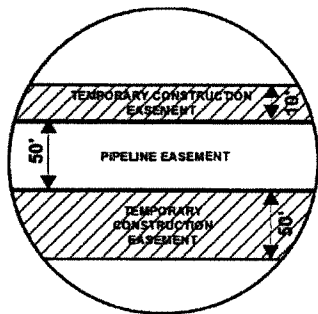


Attachment No. 1

EXHIBIT "B"

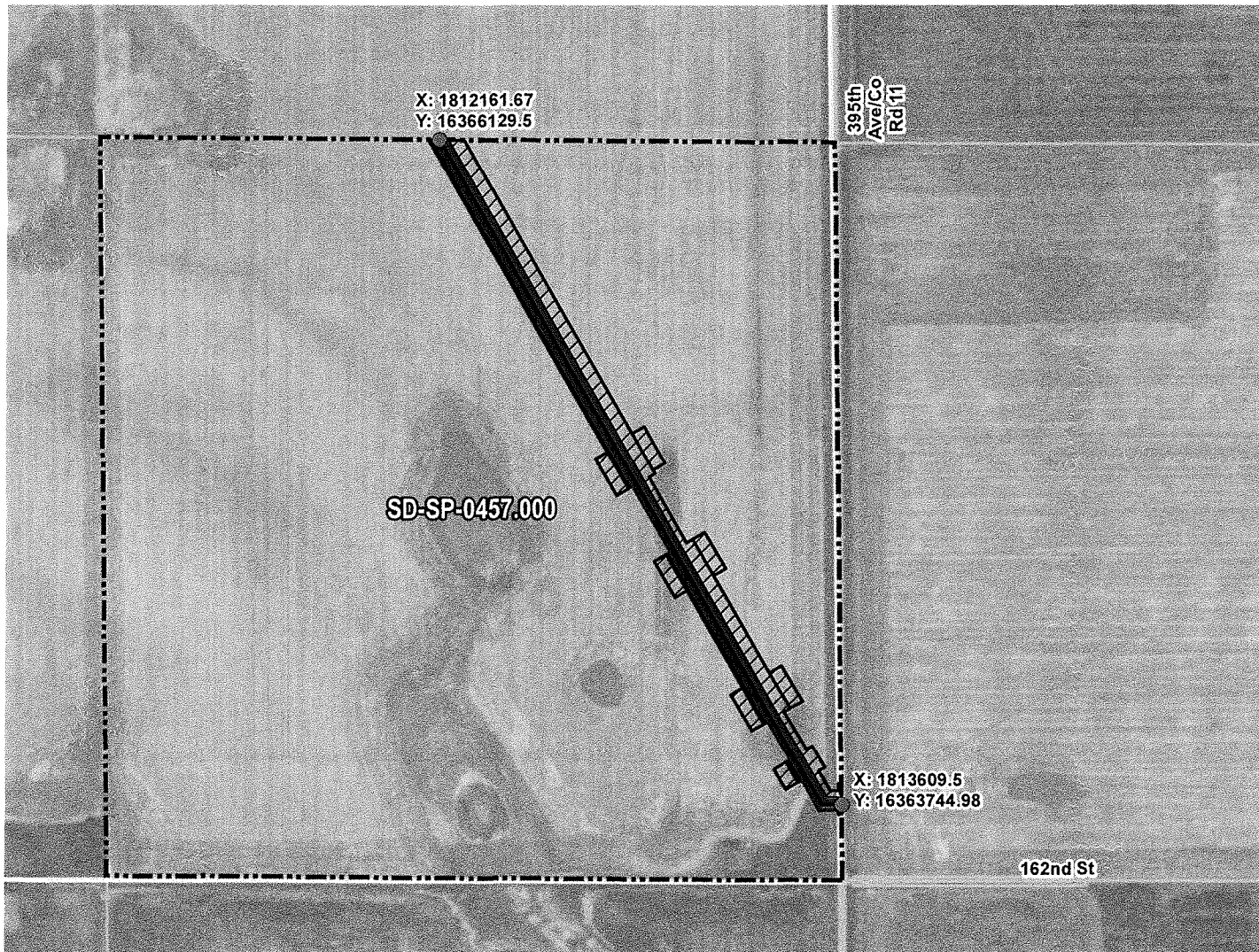
PRELIMINARY ROUTE

SPINK COUNTY, SOUTH DAKOTA



VICINITY MAP
N.T.S.

SEC. 07 T118N R62W



ROUTING LENGTH = 2824.445 FT +/-

IMPACTS: PIPELINE EASEMENT = 3.242 AC. +/- / TEMPORARY CONSTRUCTION EASEMENT = 4.485 AC. +/-

Legend

- PROPOSED ROUTE
- PARCEL BOUNDARY
- ADJACENT PROPERTIES
- PIPELINE EASEMENT
- TEMPORARY CONSTRUCTION EASEMENT
- SECTION BOUNDARY
- COUNTY BOUNDARY

NOTES:

1. THIS IS A PRELIMINARY DOCUMENT AND IS INTENDED TO DEPICT THE APPROXIMATE LOCATION OF A PROPOSED PIPELINE EASEMENT.
2. THIS DOCUMENT DOES NOT REPRESENT A LAND SURVEY AND IS NOT INTENDED TO DEPICT THE FINAL ALIGNMENT
3. COORDINATE SYSTEM: UTM ZONE 14 NORTH, NAD83, US SURVEY FEET



SUMMIT CARBON SOLUTIONS

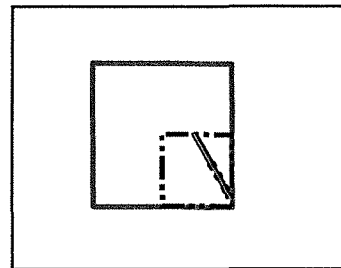
PRELIMINARY PIPELINE ROUTE

DRAWN BY: AC		SUMMIT CARBON SOLUTIONS MIDWEST CARBON EXPRESS THE KEN OLSON TRUST 2010, U/D/T NOVEMBER 23, 2010 TAX ID: 001629 TRACT NUMBER: SD-SP-0457.000
CHECKED BY: JW		
MAP DATE: 12/16/2021		
SCALE: 1 inch = 585'		
REV NO.	DATE	DESCRIPTION
F	7/20/2022	REVISED WORKSPACE
G	2/21/2023	REVISED WORKSPACE
DRAWING NO. C-MCE-ACQ-SD-SP-0457.000		PROJECT NO. 450959 SHEET NO. 01 of 01

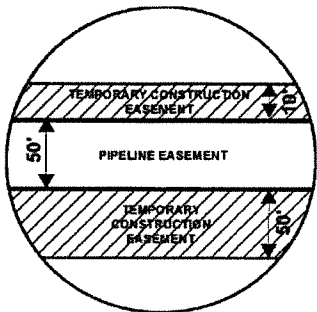
EXHIBIT "B"

PRELIMINARY ROUTE

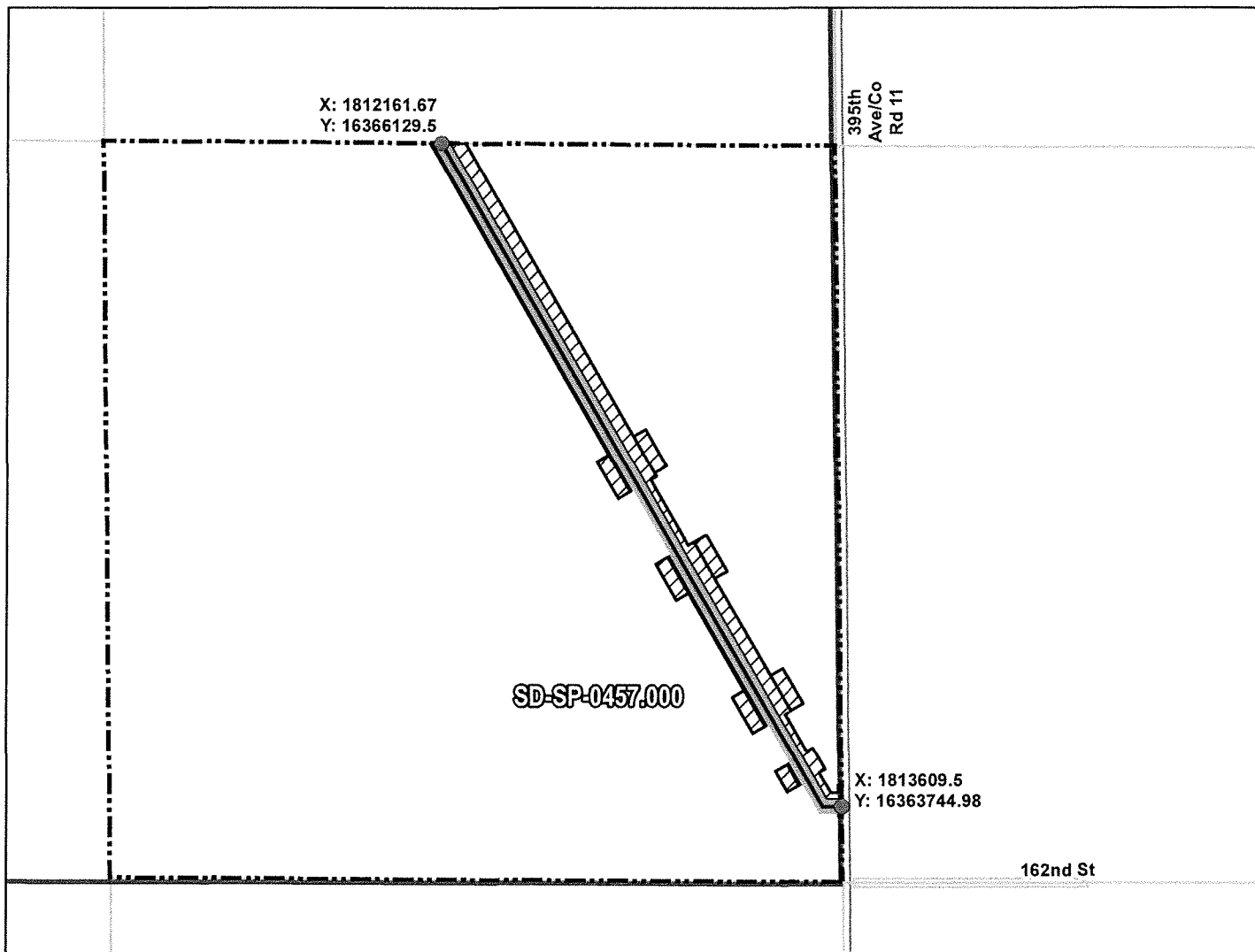
SPINK COUNTY, SOUTH DAKOTA



VICINITY MAP
N.T.S.



SEC. 07 T118N R62W



ROUTING LENGTH = 2824.445 FT +/-

IMPACTS: PIPELINE EASEMENT = 3.242 AC. +/- / TEMPORARY CONSTRUCTION EASEMENT = 4.485 AC. +/-

Legend

- PROPOSED ROUTE
- ROADS
- ▭ PARCEL BOUNDARY
- ▭ ADJACENT PROPERTIES
- ▨ PIPELINE EASEMENT
- ▨ TEMPORARY CONSTRUCTION EASEMENT
- ▭ SECTION BOUNDARY
- ▭ COUNTY BOUNDARY

NOTES:

1. THIS IS A PRELIMINARY DOCUMENT AND IS INTENDED TO DEPICT THE APPROXIMATE LOCATION OF A PROPOSED PIPELINE EASEMENT.
2. THIS DOCUMENT DOES NOT REPRESENT A LAND SURVEY AND IS NOT INTENDED TO DEPICT THE FINAL ALIGNMENT
3. COORDINATE SYSTEM: UTM ZONE 14 NORTH, NAD83, US SURVEY FEET

SIGNATURE: _____ DATE: _____



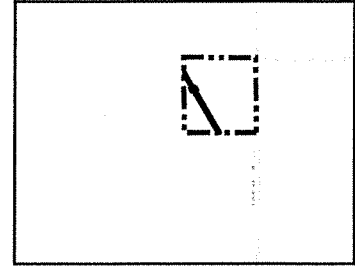
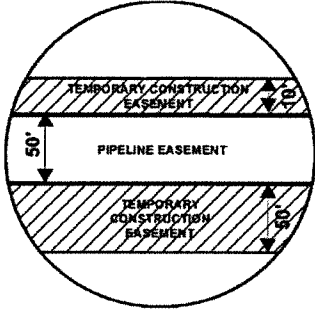
SUMMIT CARBON SOLUTIONS

PRELIMINARY PIPELINE ROUTE		
DRAWN BY:	AC	SUMMIT CARBON SOLUTIONS MIDWEST CARBON EXPRESS THE KEN OLSON TRUST 2010, U/D/T NOVEMBER 23, 2010 TAX ID: 001629 TRACT NUMBER: SD-SP-0457.000
CHECKED BY:	JW	
MAP DATE:	12/16/2021	
SCALE:	1 inch = 586'	
REV NO.	DATE	DESCRIPTION
F	7/20/2022	REVISED WORKSPACE
G	2/21/2023	REVISED WORKSPACE
DRAWING NO. BW-MCE-ACQ-SD-SP-0457.000		PROJECT NO. 450959
		SHEET NO. 01 of 01

EXHIBIT "B"

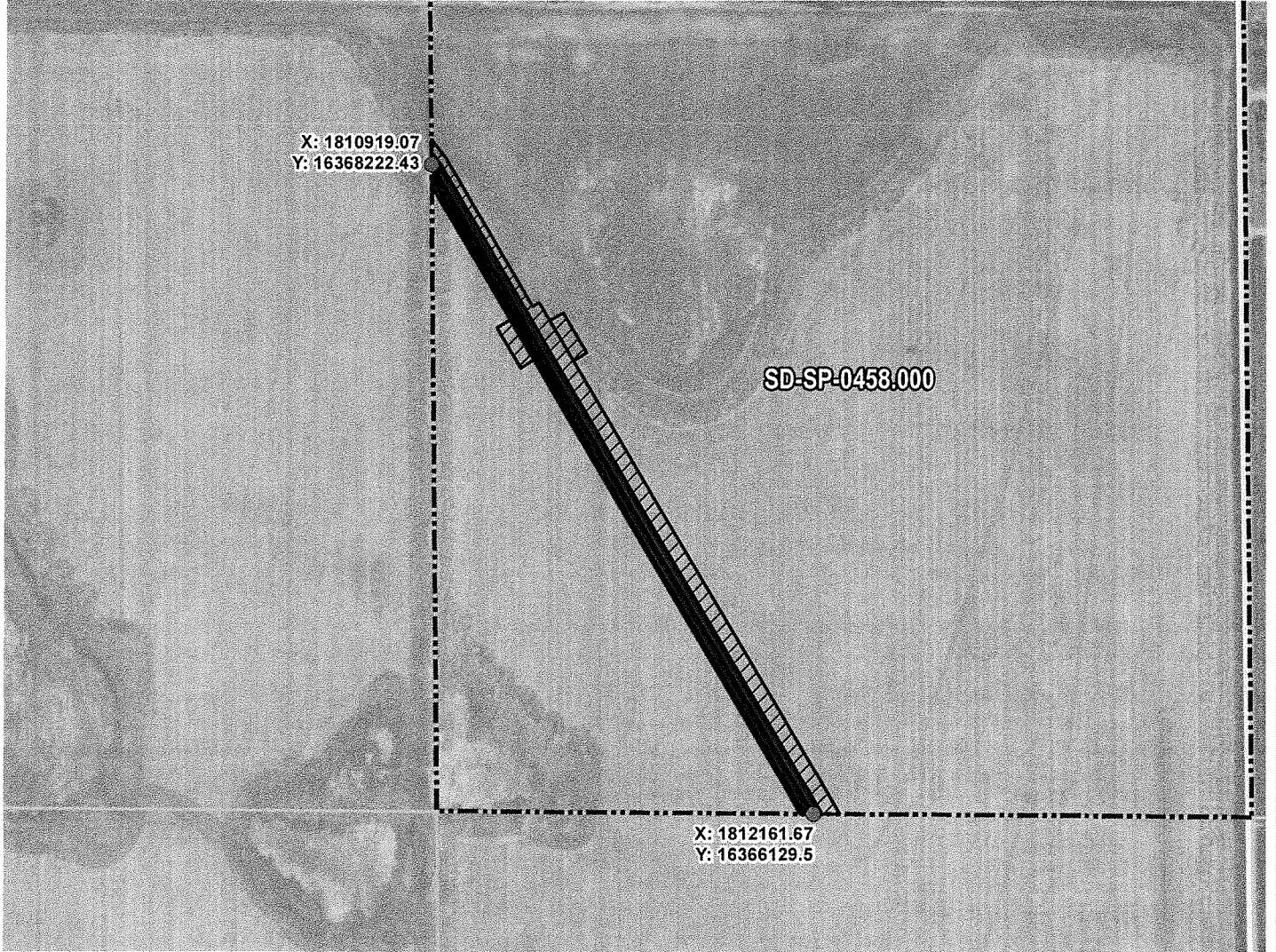
PRELIMINARY ROUTE

SPINK COUNTY, SOUTH DAKOTA



VICINITY MAP
N.T.S.

SEC. 07 T118N R62W



ROUTING LENGTH = 2433.676 FT +/-

IMPACTS: PIPELINE EASEMENT = 2.792 AC. +/- / TEMPORARY CONSTRUCTION EASEMENT = 3.417 AC. +/-

Legend

- PROPOSED ROUTE
- PIPELINE EASEMENT
- PARCEL BOUNDARY
- TEMPORARY CONSTRUCTION EASEMENT
- ADJACENT PROPERTIES
- SECTION BOUNDARY
- COUNTY BOUNDARY

NOTES:

1. THIS IS A PRELIMINARY DOCUMENT AND IS INTENDED TO DEPICT THE APPROXIMATE LOCATION OF A PROPOSED PIPELINE EASEMENT.
2. THIS DOCUMENT DOES NOT REPRESENT A LAND SURVEY AND IS NOT INTENDED TO DEPICT THE FINAL ALIGNMENT
3. COORDINATE SYSTEM: UTM ZONE 14 NORTH, NAD83, US SURVEY FEET



SUMMIT CARBON SOLUTIONS

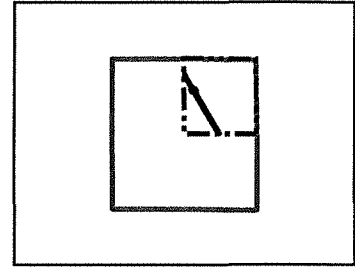
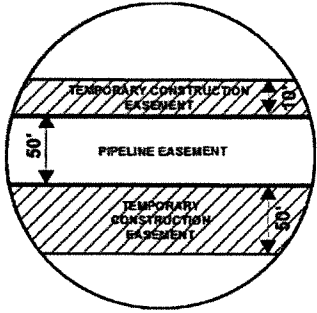
PRELIMINARY PIPELINE ROUTE

DRAWN BY:	AC	SUMMIT CARBON SOLUTIONS MIDWEST CARBON EXPRESS THE KEN OLSON TRUST 2010, U/D/T NOVEMBER 23, 2010 TAX ID: 001627 TRACT NUMBER: SD-SP-0458.000
CHECKED BY:	JW	
MAP DATE:	12/16/2021	
SCALE:	1 inch = 528'	
REV NO.	DATE	DESCRIPTION
F	12/15/2022	REVISED PARCEL BOUNDARY
G	2/21/2023	REVISED WORKSPACE
DRAWING NO. C-MCE-ACQ-SD-SP-0458.000		PROJECT NO. 450959 SHEET NO. 01 of 01

EXHIBIT "B"

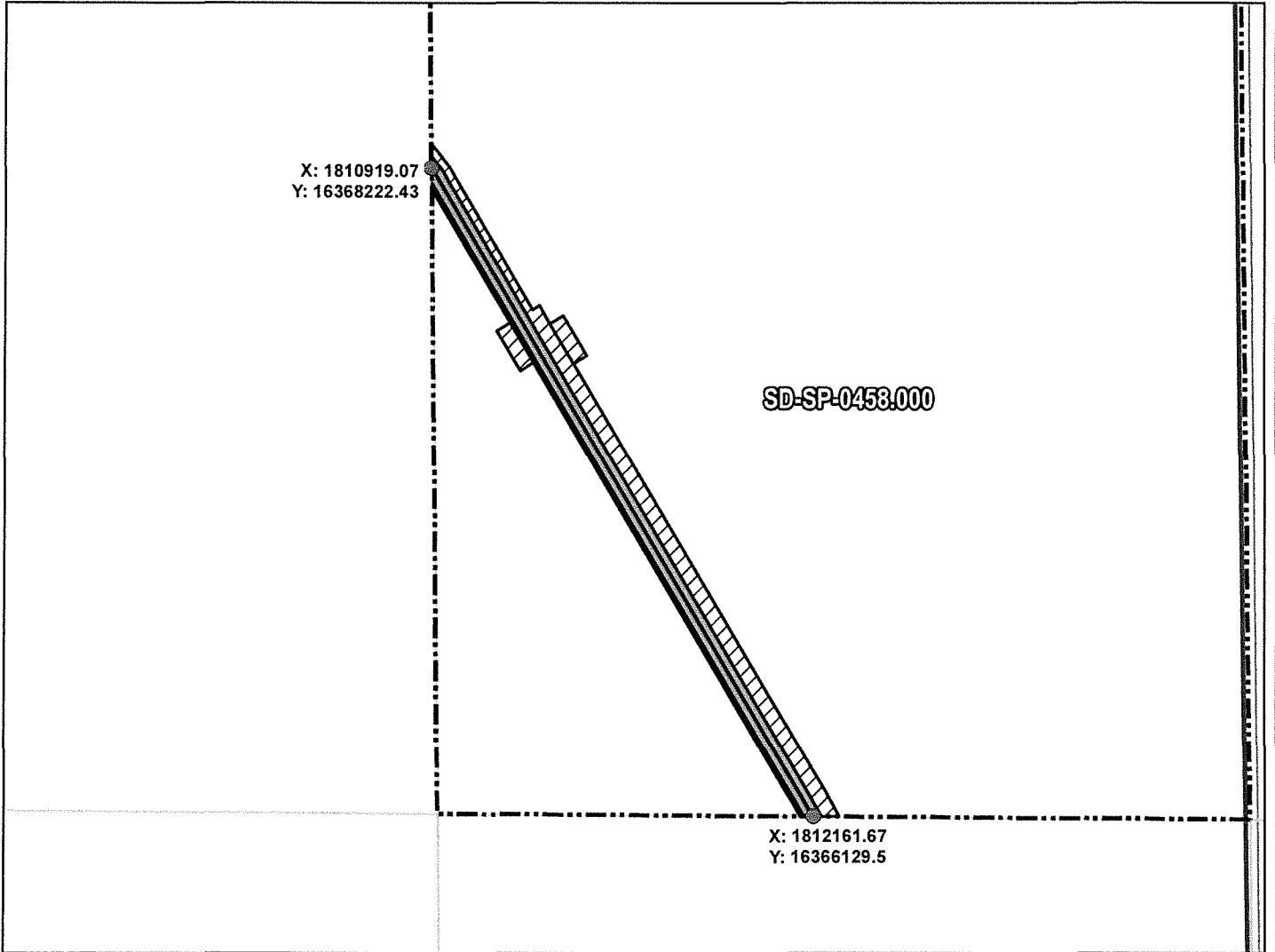
PRELIMINARY ROUTE

SPINK COUNTY, SOUTH DAKOTA



VICINITY MAP
N.T.S.

SEC. 07 T118N R62W



ROUTING LENGTH = 2433.676 FT +/-

IMPACTS: PIPELINE EASEMENT = 2.792 AC. +/- / TEMPORARY CONSTRUCTION EASEMENT = 3.417 AC. +/-

Legend

- PROPOSED ROUTE
- ROADS
- PARCEL BOUNDARY
- ADJACENT PROPERTIES
- ▨ PIPELINE EASEMENT
- ▩ TEMPORARY CONSTRUCTION EASEMENT
- ▭ SECTION BOUNDARY
- COUNTY BOUNDARY

NOTES:

1. THIS IS A PRELIMINARY DOCUMENT AND IS INTENDED TO DEPICT THE APPROXIMATE LOCATION OF A PROPOSED PIPELINE EASEMENT.
2. THIS DOCUMENT DOES NOT REPRESENT A LAND SURVEY AND IS NOT INTENDED TO DEPICT THE FINAL ALIGNMENT
3. COORDINATE SYSTEM: UTM ZONE 14 NORTH, NAD83, US SURVEY FEET

SIGNATURE: _____ DATE: _____



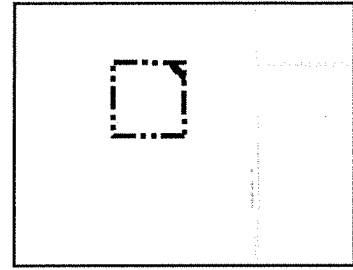
SUMMIT CARBON SOLUTIONS

PRELIMINARY PIPELINE ROUTE		
DRAWN BY:	AC	SUMMIT CARBON SOLUTIONS MIDWEST CARBON EXPRESS THE KEN OLSON TRUST 2010, U/D/T NOVEMBER 23, 2010 TAX ID: 001627 TRACT NUMBER: SD-SP-0458.000
CHECKED BY:	JW	
MAP DATE:	12/16/2021	
SCALE:	1 inch = 528'	
REV NO.	DATE	DESCRIPTION
F	12/15/2022	REVISED PARCEL BOUNDARY
G	2/21/2023	REVISED WORKSPACE
DRAWING NO. BW-MCE-ACC-SD-SP-0458.000		PROJECT NO. 450959 SHEET NO. 01 of 01

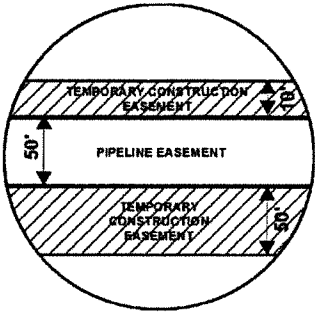
EXHIBIT "B"

PRELIMINARY ROUTE

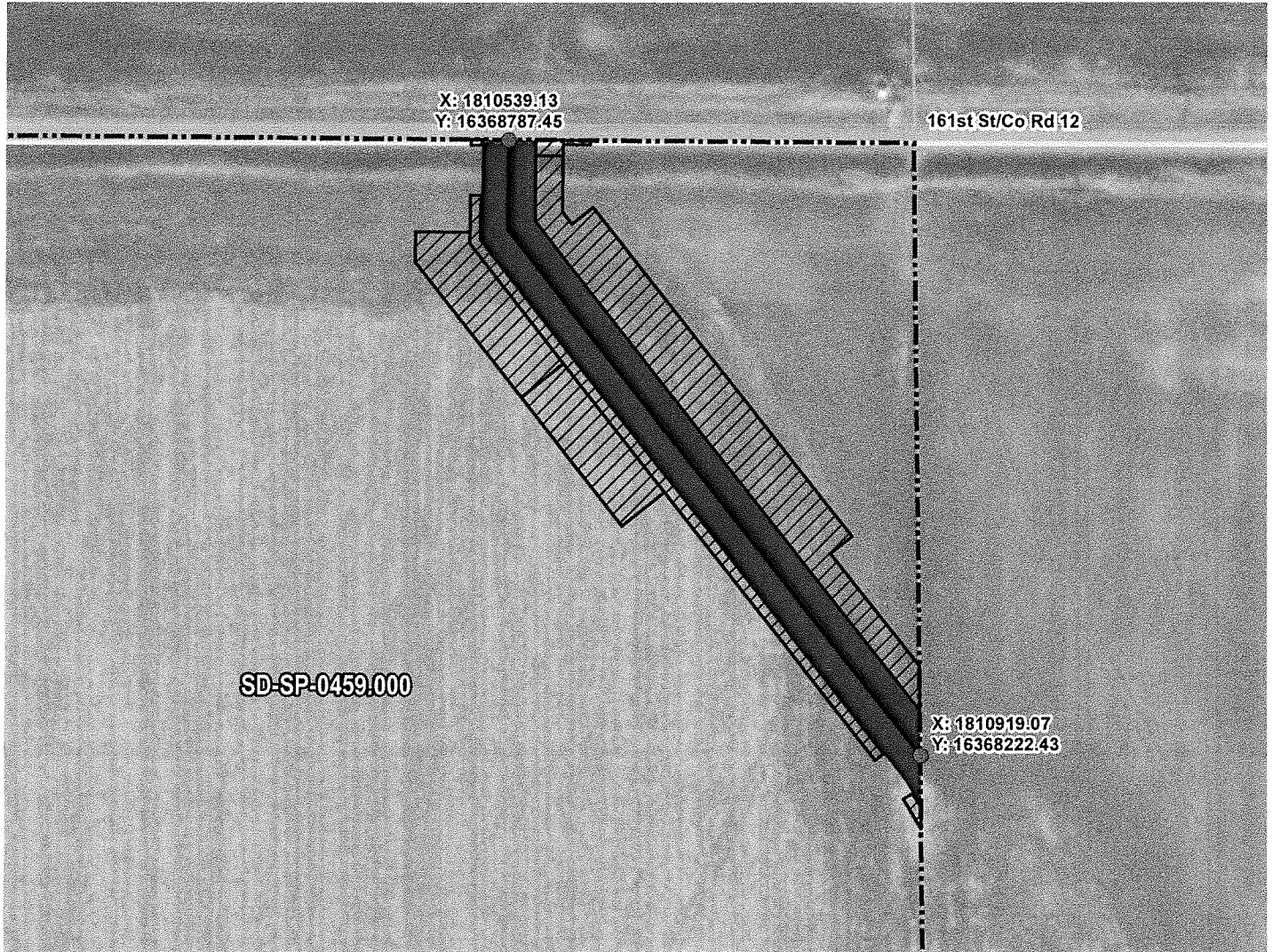
SPINK COUNTY, SOUTH DAKOTA



VICINITY MAP
N.T.S.



SEC. 07 T118N R62W



ROUTING LENGTH = 697.113 FT +/-

IMPACTS: PIPELINE EASEMENT = 0.801 AC. +/- / TEMPORARY CONSTRUCTION EASEMENT = 1.1 AC. +/-

Legend

- PROPOSED ROUTE
- PIPELINE EASEMENT
- PARCEL BOUNDARY
- TEMPORARY CONSTRUCTION EASEMENT
- ADJACENT PROPERTIES
- SECTION BOUNDARY
- COUNTY BOUNDARY

NOTES:

1. THIS IS A PRELIMINARY DOCUMENT AND IS INTENDED TO DEPICT THE APPROXIMATE LOCATION OF A PROPOSED PIPELINE EASEMENT.
2. THIS DOCUMENT DOES NOT REPRESENT A LAND SURVEY AND IS NOT INTENDED TO DEPICT THE FINAL ALIGNMENT
3. COORDINATE SYSTEM: UTM ZONE 14 NORTH, NAD83, US SURVEY FEET

PRELIMINARY PIPELINE ROUTE

DRAWN BY:	AC	SUMMIT CARBON SOLUTIONS MIDWEST CARBON EXPRESS THE KEN OLSON TRUST 2010, U/D/T NOVEMBER 23, 2010 TAX ID: 001628 TRACT NUMBER: SD-SP-0459.000
CHECKED BY:	JW	
MAP DATE:	12/16/2021	
SCALE:	1 inch = 150'	
REV NO.	DATE	DESCRIPTION
F	7/7/2022	REVISED WORKSPACE
G	12/15/2022	REVISED PARCEL BOUNDARY
DRAWING NO. C-MCE-ACQ-SD-SP-0459.000		PROJECT NO. 450959
		SHEET NO. 01 of 01



SUMMIT CARBON
SOLUTIONS

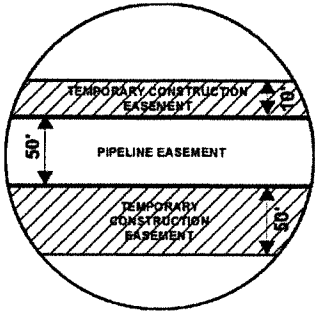
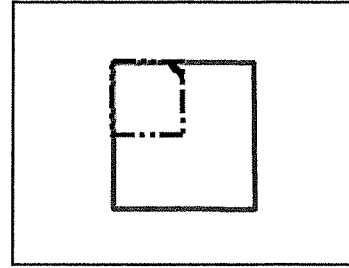


EXHIBIT "B"

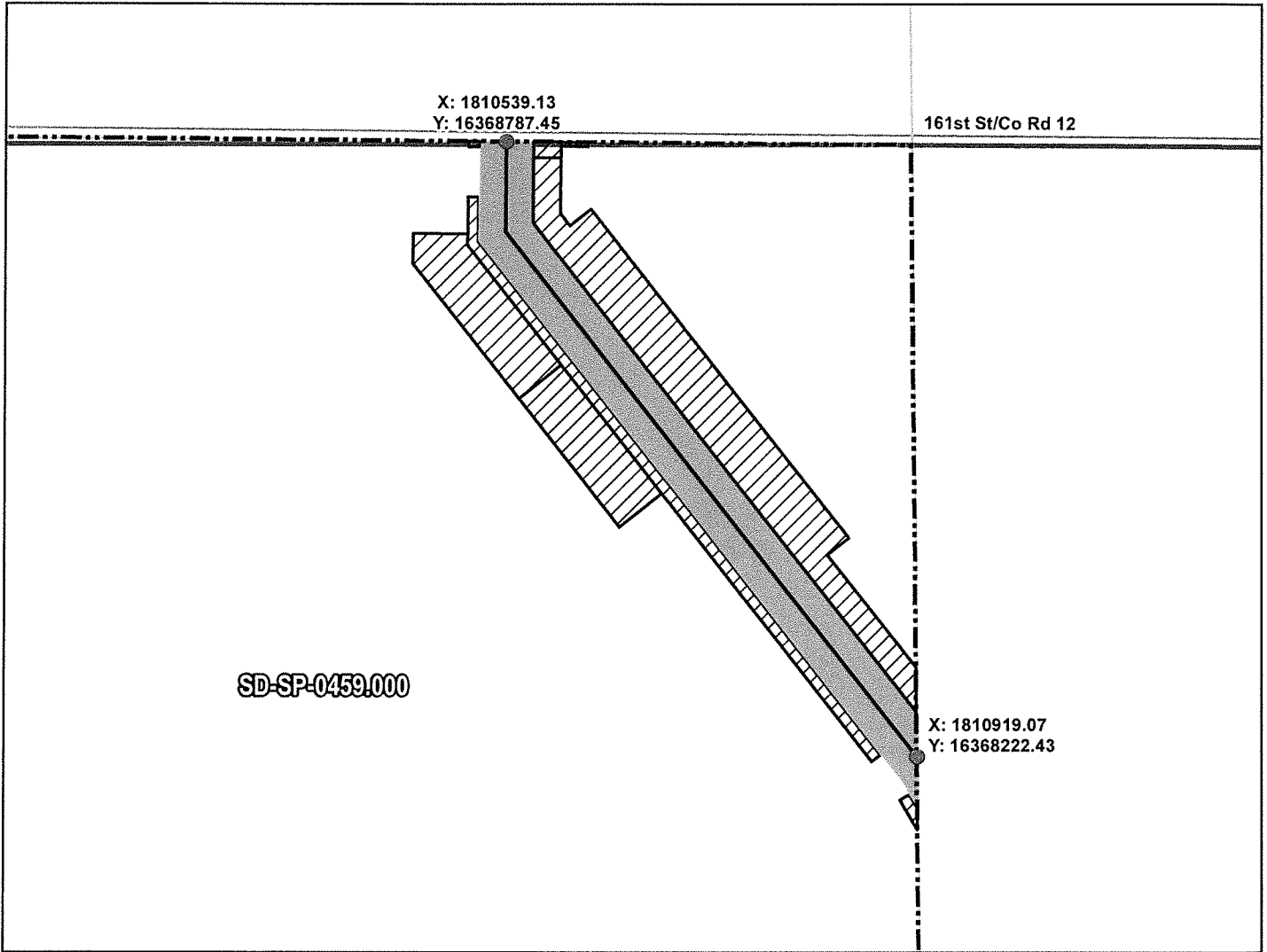
PRELIMINARY ROUTE

SPINK COUNTY, SOUTH DAKOTA



VICINITY MAP
N.T.S.

SEC. 07 T118N R62W



ROUTING LENGTH = 697.113 FT +/-

IMPACTS: PIPELINE EASEMENT = 0.801 AC. +/- / TEMPORARY CONSTRUCTION EASEMENT = 1.1 AC. +/-

Legend

- PROPOSED ROUTE
- ROADS
- PARCEL BOUNDARY
- ADJACENT PROPERTIES
- PIPELINE EASEMENT
- TEMPORARY CONSTRUCTION EASEMENT
- SECTION BOUNDARY
- COUNTY BOUNDARY

NOTES:

1. THIS IS A PRELIMINARY DOCUMENT AND IS INTENDED TO DEPICT THE APPROXIMATE LOCATION OF A PROPOSED PIPELINE EASEMENT.
2. THIS DOCUMENT DOES NOT REPRESENT A LAND SURVEY AND IS NOT INTENDED TO DEPICT THE FINAL ALIGNMENT
3. COORDINATE SYSTEM: UTM ZONE 14 NORTH, NAD83, US SURVEY FEET

SIGNATURE: _____ DATE: _____



SUMMIT CARBON SOLUTIONS

PRELIMINARY PIPELINE ROUTE

DRAWN BY:	AC	SUMMIT CARBON SOLUTIONS MIDWEST CARBON EXPRESS THE KEN OLSON TRUST 2010, U/D/T NOVEMBER 23, 2010 TAX ID: 001628 TRACT NUMBER: SD-SP-0459.000
CHECKED BY:	JW	
MAP DATE:	12/16/2021	
SCALE:	1 inch = 150'	
REV NO.	DATE	DESCRIPTION
F	7/7/2022	REVISED WORKSPACE
G	12/15/2022	REVISED PARCEL BOUNDARY
DRAWING NO.	PROJECT NO.	SHEET NO.
BW-MCE-ACQ-SD-SP-0459.000	450959	01 of 01