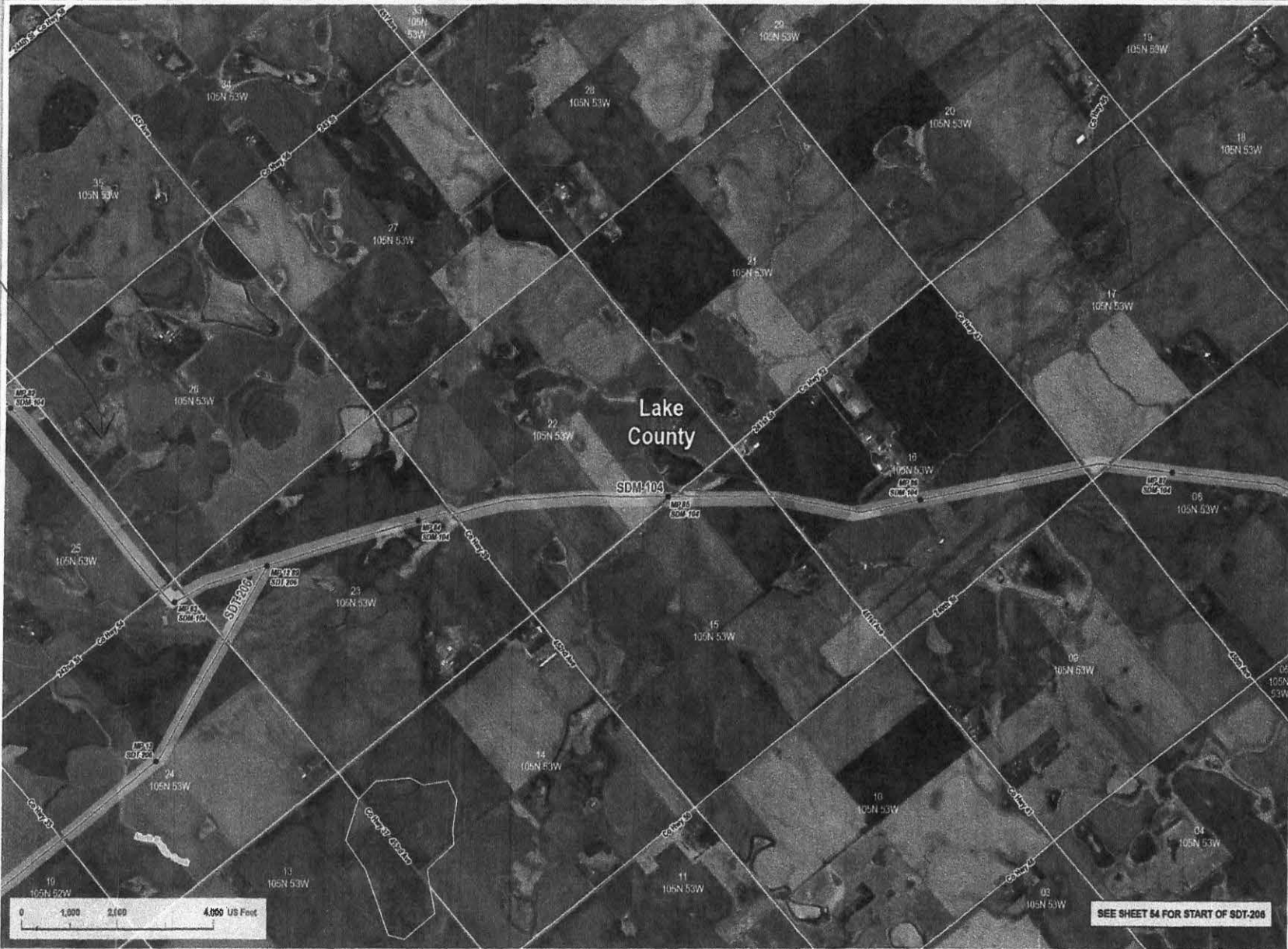


Attachment No. 1

Aaron + Kirsten Johnson's house + land

SD PUC - LAND USE / LAND COVER MAP BOOK - SDM-104



VICINITY MAP



South Dakota

Great Plains

LEGEND

- Proposed Project Route
- Station Line
- ▣ County Line
- ▨ Customized NLC2 201P
- ▨ Disturbed Crops
- ▨ Deciduous Forest
- ▨ Developed
- ▨ Grassland
- ▨ Hay/Pasture
- ▨ Field Success/Orchard
- ▨ Ephemeral
- ▨ Interstate
- ▨ PRM




REVISIONS

Date	Revised By	Checked By
2022-03-07	AS	PO
0 - Issued for SDPUC Application		

PREPARED BY

Summit Carbon Solutions
 2121 First Loop Drive, Suite 222
 Arva, MN 56202
 United States of America



MIDWEST CARBON EXPRESS PROJECT

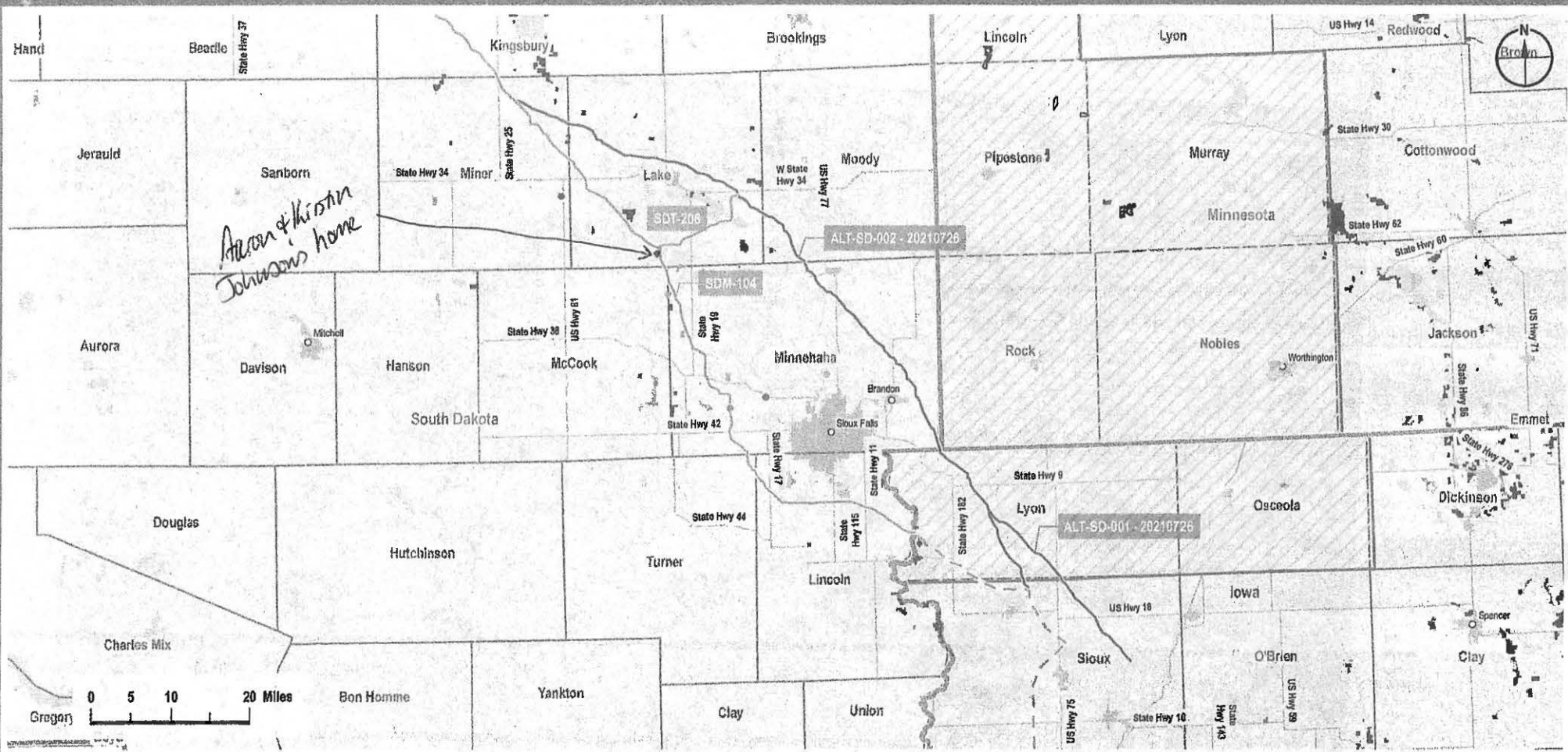
Figure Title
**SD PUC - Land Use / Land Cover Map Book
 SDM-104**

Figure No. / Rev
Appendix BC

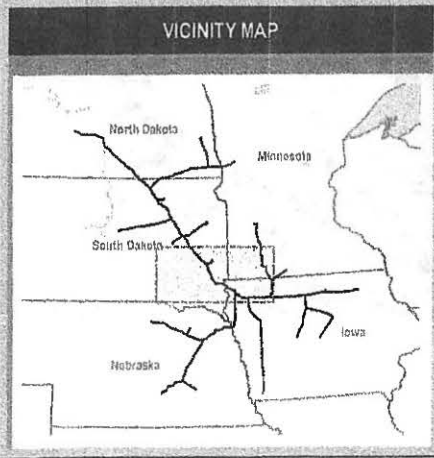
Scale 1" = 24,000' 1 inch equals 2,000 feet	Transverse Mercator NAD 1983 UTM Zone 14N
Sheet 13 13 of 104	Project Number 1001-05-001 Revision 0

2022-03-07 10:00 AM SD PUC - Land Use / Land Cover Map Book - SDM-104 - Appendix BC - 13 of 104

PROJECT ALTERNATIVES MAP - SOUTH DAKOTA



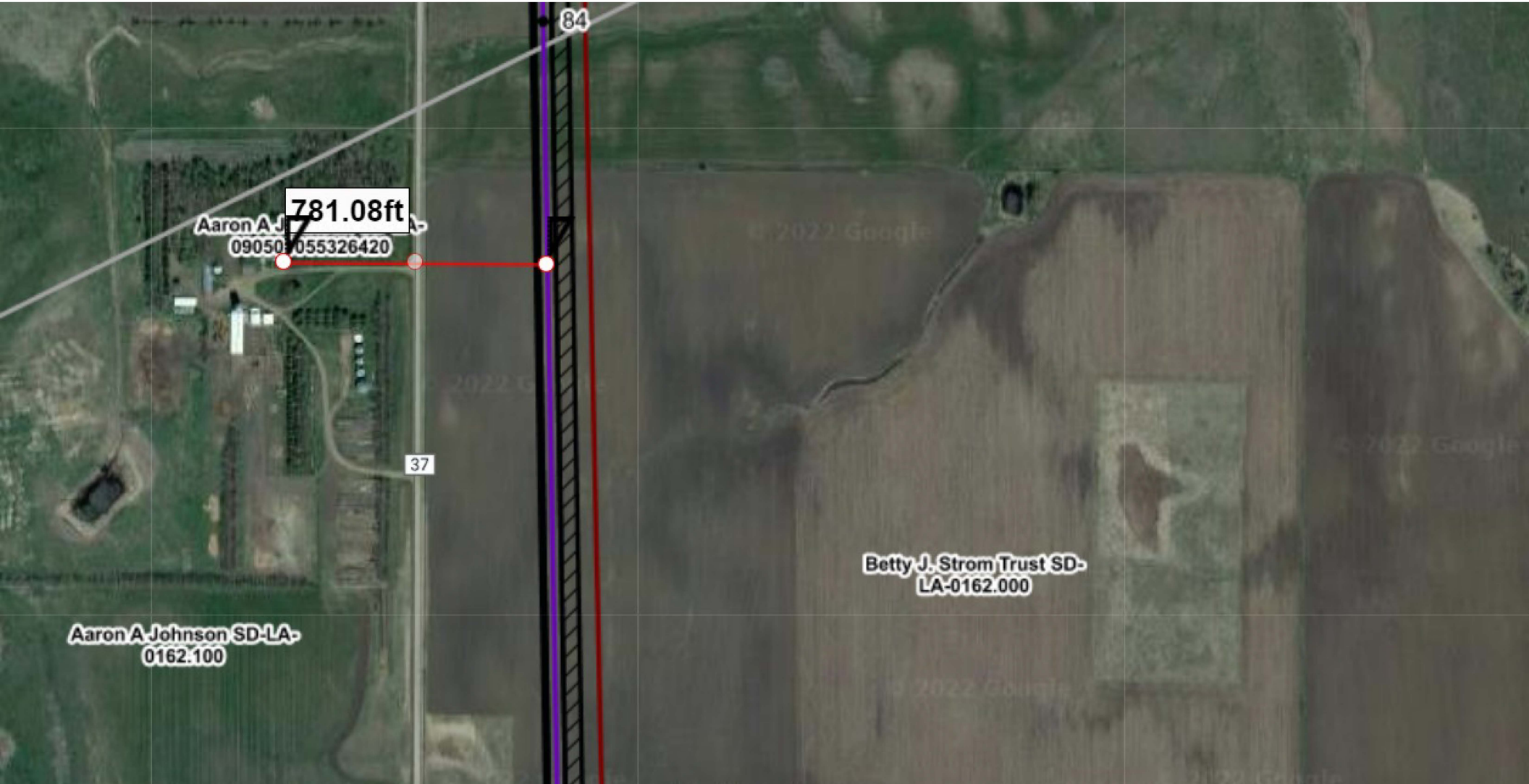
FILE: C:\projects\SD\SD-001-20210726\SD-001-20210726.dwg
 PLOT: SD-001-20210726.dwg
 PLOT DATE: 2/27/2022 10:00:00 AM
 PLOT SCALE: 1"=18.81 MI
 PLOT SHEET: 1 OF 4
 PLOT TITLE: PROJECT ALTERNATIVES MAP - SOUTH DAKOTA



VICINITY MAP		LEGEND	
	Proposed Project Route (SD)		City / Town
	Proposed Project Route (Other States)		County Boundary
	Alternatives Eliminated From Further Consideration		State Boundary
	Pump Station		Urban Area
	Contractor Yard		USFWS Critical Habitat
	Laydown Yard		Dakota Skipper
	Laydown and Contractor Yards are approximate locations and subject to change		Piping Plover
			Poweshiek skittering
			Topeka shiner
			River / Stream
			Waterbody
			Federal Land
			State & Local Conservation Lands
			Local Conservation Area
			Local Park
			Research or Educational Area
			State Conservation Area
			State Other or Unknown
			State Park
			State Recreation Area
Pipeline Naming Convention [State Abbreviation]([Line Designation]) - [Line Number] (e.g. SDT-207) -State Abbreviation: Iowa (IA), Minnesota (MN), North Dakota (ND), South Dakota (SD) -Line Designation: Lateral (L), Main (M), Trunk (T) -Line Number: 3-digit series			

PREPARED BY		
Summit Carbon Solutions 1805 Collaboration Place, Suite 1200 Ames, Iowa 50010 United States of America www.summitcarbonsolutions.com		
REVISIONS		
Date: 2022-02-07	Revised by: GS	Checked by: PD
0 - Issued for SDPUC Application		
Date:	Revised by:	Checked by:

MIDWEST CARBON EXPRESS PROJECT	
Figure Title:	Route Alternatives South Dakota
Figure Number:	Figure 4-1: Alt-SD-001 & Alt-SD-002
Scale:	1 : 1,192,000 1 inch equals 18.81 miles
Projection:	Transverse Mercator NAD 1983 UTM Zone 14N
Sheet:	1 1 of 4
Drawing Number:	0906-002-SD-ALT Revision 0



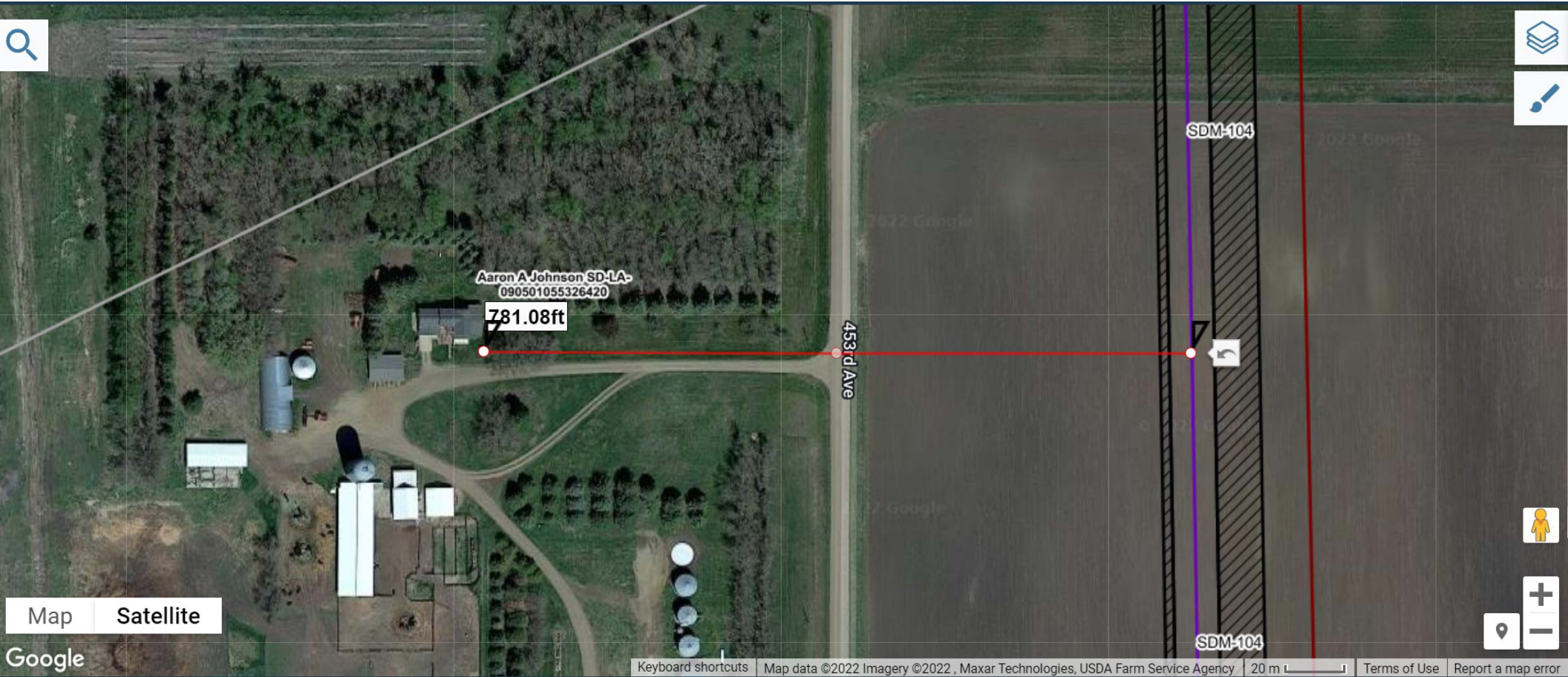
781.08ft
Aaron A Johnson SD-LA-
09050055326420

37

84

Betty J. Strom Trust SD-
LA-0162.000

Aaron A Johnson SD-LA-
0162.100



Aaron A Johnson SD-LA-
090501055326420

781.08ft

453rd Ave

SDM-104

SDM-104

Map Satellite

Google