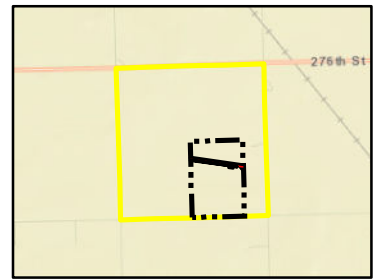


Attachment No. 1

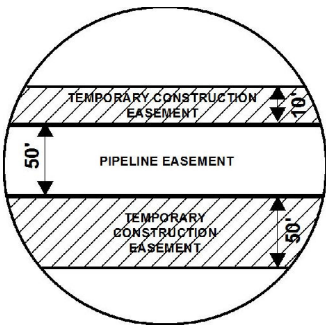
EXHIBIT "B"

PRELIMINARY ROUTE

LINCOLN COUNTY, SOUTH DAKOTA



VICINITY MAP
N.T.S.



SEC. 19 T099N R49W



X: 2257450.65
Y: 15766130.91

SD-LI-104-177.000

X: 2259284.89
Y: 15765870.6

ROUTING LENGTH = 1852.622 FT +/-

IMPACTS: PIPELINE EASEMENT = 2.127 AC. +/- / TEMPORARY CONSTRUCTION EASEMENT = 2.761 AC. +/-

Legend

- PROPOSED ROUTE
- PARCEL BOUNDARY
- ADJACENT PROPERTIES
- PIPELINE EASEMENT
- TEMPORARY CONSTRUCTION EASEMENT
- SECTION BOUNDARY
- COUNTY BOUNDARY

NOTES:

1. THIS IS A PRELIMINARY DOCUMENT AND IS INTENDED TO DEPICT THE APPROXIMATE LOCATION OF A PROPOSED PIPELINE EASEMENT.
2. THIS DOCUMENT DOES NOT REPRESENT A LAND SURVEY AND IS NOT INTENDED TO DEPICT THE FINAL ALIGNMENT
3. COORDINATE SYSTEM: UTM ZONE 14 NORTH, NAD83, US SURVEY FEET

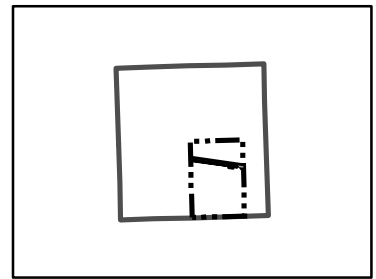
PRELIMINARY PIPELINE ROUTE

DRAWN BY:	AC	SUMMIT CARBON SOLUTIONS MIDWEST CARBON EXPRESS CREDIT TRUST ESTABLISHED UNDER THE CARL AND ANN COWART LIVING TAX ID: 099.49.19.C300 TRACT NUMBER: SD-LI-104-177.000
CHECKED BY:	JW	
MAP DATE:	1/28/2022	
SCALE:	1 inch = 332'	
REV NO.	DATE	DESCRIPTION
C	7/19/2022	REVISED WORKSPACE
D	9/13/2022	REVISED WORKSPACE
DRAWING NO. C-MCE-ACQ-SD-LI-104-177.000		PROJECT NO. 450959
		SHEET NO. 01 of 01

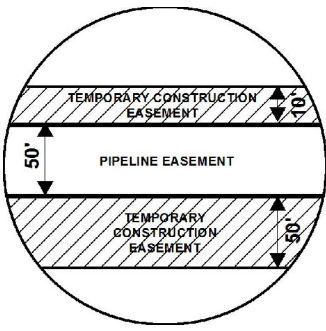
EXHIBIT "B"

PRELIMINARY ROUTE

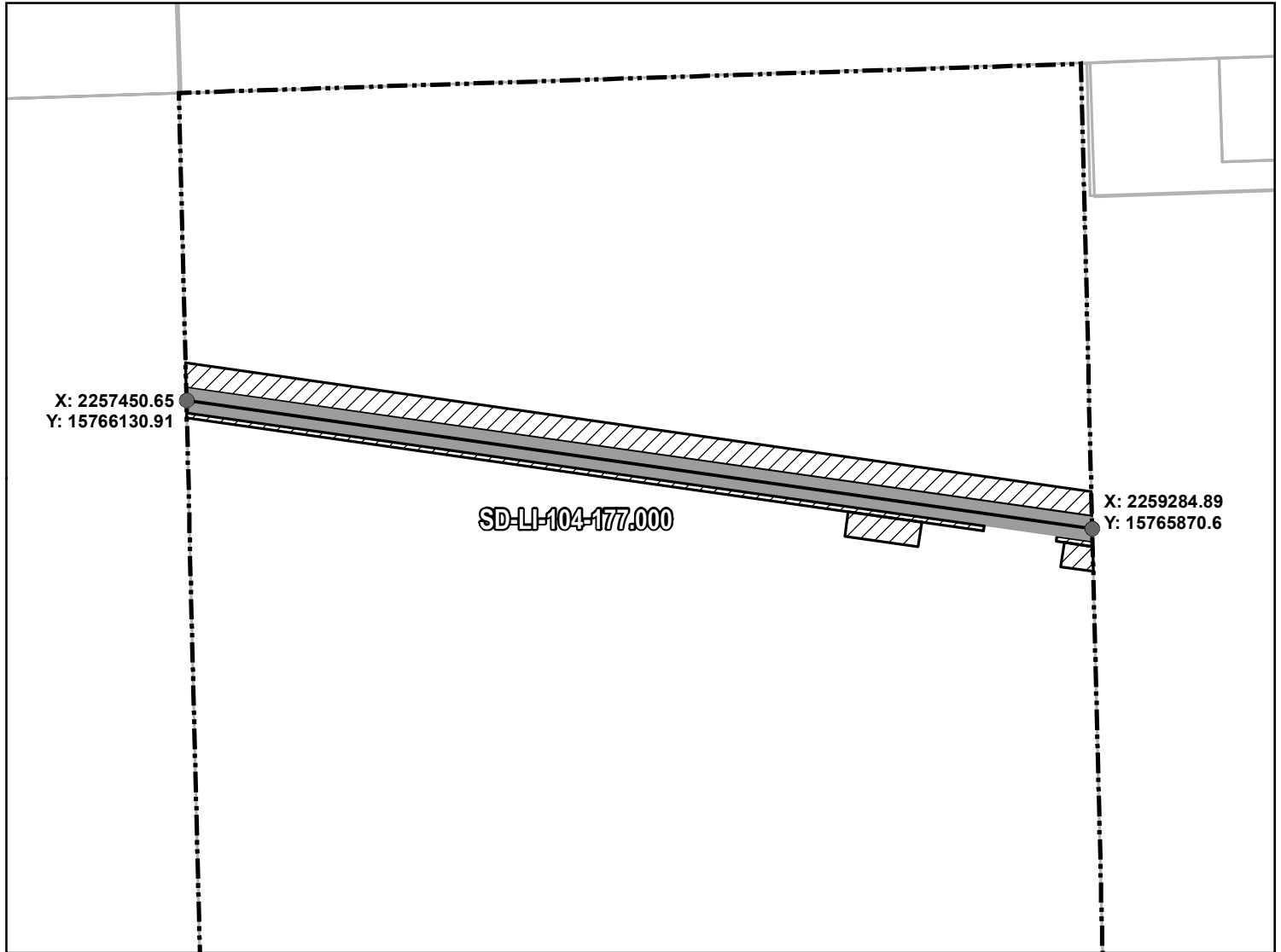
LINCOLN COUNTY, SOUTH DAKOTA



VICINITY MAP
N.T.S.



SEC. 19 T099N R49W



ROUTING LENGTH = 1852.622 FT +/-
IMPACTS: PIPELINE EASEMENT = 2.127 AC. +/- / TEMPORARY CONSTRUCTION EASEMENT = 2.761 AC. +/-

Legend

- PROPOSED ROUTE
- ROADS
- ▭ PARCEL BOUNDARY
- ▭ ADJACENT PROPERTIES
- ▭ PIPELINE EASEMENT
- ▨ TEMPORARY CONSTRUCTION EASEMENT
- ▭ SECTION BOUNDARY
- ▭ COUNTY BOUNDARY

NOTES:

1. THIS IS A PRELIMINARY DOCUMENT AND IS INTENDED TO DEPICT THE APPROXIMATE LOCATION OF A PROPOSED PIPELINE EASEMENT.
2. THIS DOCUMENT DOES NOT REPRESENT A LAND SURVEY AND IS NOT INTENDED TO DEPICT THE FINAL ALIGNMENT
3. COORDINATE SYSTEM: UTM ZONE 14 NORTH, NAD83, US SURVEY FEET

SIGNATURE: _____ DATE: _____



SUMMIT CARBON
SOLUTIONS

PRELIMINARY PIPELINE ROUTE

DRAWN BY:	AC	SUMMIT CARBON SOLUTIONS MIDWEST CARBON EXPRESS CREDIT TRUST ESTABLISHED UNDER THE CARL AND ANN COWART LIVING TAX ID: 099.49.19.C300 TRACT NUMBER: SD-LI-104-177.000
CHECKED BY:	JW	
MAP DATE:	1/28/2022	
SCALE:	1 inch = 332'	
REV NO.	DATE	DESCRIPTION
C	7/19/2022	REVISED WORKSPACE
D	9/13/2022	REVISED WORKSPACE
DRAWING NO. BW-MCE-ACQ-SD-LI-104-177.000		PROJECT NO. 450959
		SHEET NO. 01 of 01