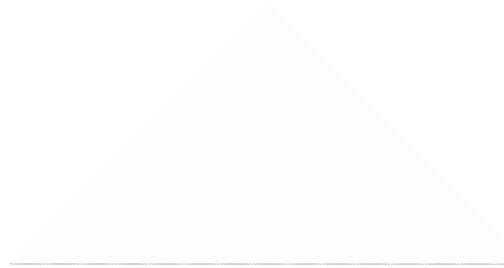
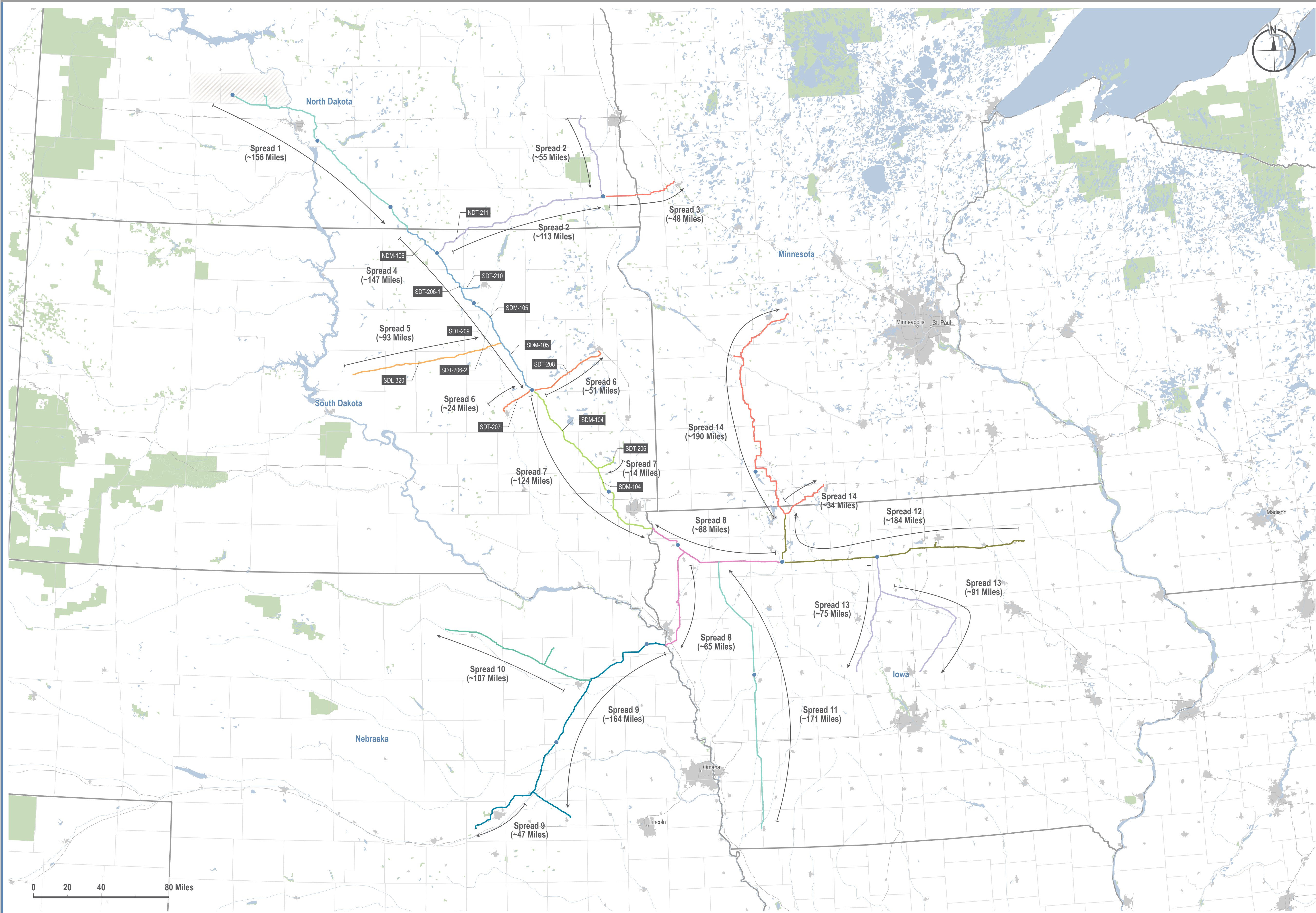


Appendix 1 - Construction Spread Overview Map



APPENDIX 1 - SPREAD OVERVIEW MAP



LEGEND

- Spread 1 (Light Blue)
- Spread 2 (Red)
- Spread 3 (Dark Blue)
- Spread 4 (Light Green)
- Spread 5 (Orange)
- Spread 6 (Yellow)
- Spread 7 (Light Blue)
- Spread 8 (Pink)
- Spread 9 (Teal)
- Spread 10 (Light Green)
- Spread 11 (Light Blue)
- Spread 12 (Light Green)
- Spread 13 (Light Blue)
- Spread 14 (Red)

- Pump Station (Blue Dot)
- Federal Land (Green)
- Urban Area (Grey)
- Highway (Grey Line)
- State Boundary (Thick Grey Line)
- County Boundary (Thin Grey Line)
- Waterbody (Blue)
- City / Town (Grey Dot)
- Sequestration Evaluation Area (Site TBD) (Hatched)

Pipeline Naming Convention:
 [State Abbreviation][Line Designation] - [Line Number]
 (e.g. SDT-207)
 - State Abbreviation: Iowa (IA), Minnesota (MN), N. Dakota (ND), S. Dakota (SD)
 - Line Designation: Lateral (L), Main (M), Trunk (T)
 - Line Number: 3-digit series

REVISIONS

Date: 2022-02-07	Revised by: PD	Checked by: JS
0 - Issued for SDPUC Application Issued figure for SDPUC Application.		
Date: 2022-10-04	Revised by: PD	Checked by: SB
1 - Re-Issued for SDPUC Application Re-Issued figure for SDPUC Application.		
Date:	Revised by:	Checked by:

PREPARED BY

Summit Carbon Solutions
 2321 North Loop Drive, Suite 221
 Ames, Iowa 50010
 United States of America
www.summitcarbonsolutions.com

MIDWEST CARBON EXPRESS PROJECT

Figure Title:
Spread Overview Map

Figure Number:
Appendix 1

Scale: 1 : 1,750,000 1 inch equals 27.62 miles	Projection: Transverse Mercator NAD 1983 UTM Zone 14N
Sheet: 1 1 of 1	Drawing Number: 1003-01-008 Revision 1

10/27/2022 10:21:00 AM - Summit Carbon Solutions - 1003-01-008 - Appendix 1 - Spread Overview Map - 1 of 1