

Figure PS-3. Project summary map.

SCS collected data and completed a detailed characterization of the injection and confining zones to ensure that the injected CO₂ will remain permanently sequestered in the subsurface. Data acquisition began by first obtaining >95% surface access agreements, allowing SCS to collect seismic data. Seismic data collection commenced in October 2021 and spanned approximately six townships over 200 square miles. Thereafter, three stratigraphic wells were drilled and completed; drilling operations started in January 2022 and ended in May 2022. The Milton Flemmer 1 (NDIC File No. 38594, Mercer County) well was drilled, cored, and logged into the Deadwood Formation at approximately 12,000 ft, while Archie Erickson 2 (NDIC File No. 38622, Mercer County) and



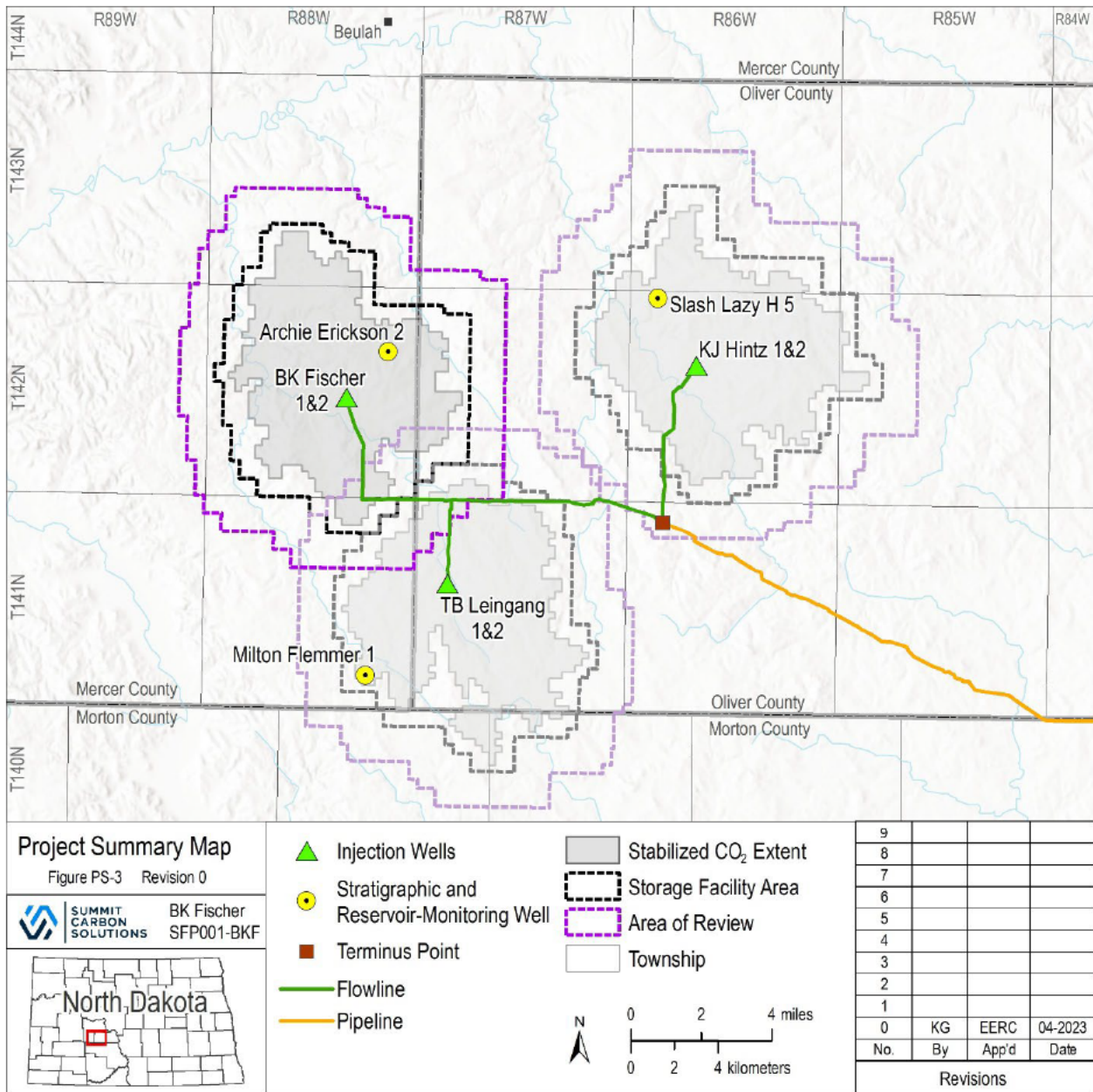


Figure PS-3. Project summary map.

SCS collected data and completed a detailed characterization of the injection and confining zones to ensure that the injected CO₂ will remain permanently sequestered in the subsurface. Data acquisition began by first obtaining >95% surface access agreements, allowing SCS to collect seismic data. Seismic data collection commenced in October 2021 and spanned approximately six townships over 200 square miles. Thereafter, three stratigraphic wells were drilled and completed; drilling operations started in January 2022 and ended in May 2022. The Milton Flemmer 1 (NDIC File No. 38594, Mercer County) well was drilled, cored, and logged into the Deadwood Formation at approximately 12,000 ft, while Archie Erickson 2 (NDIC File No. 38622, Mercer County) and

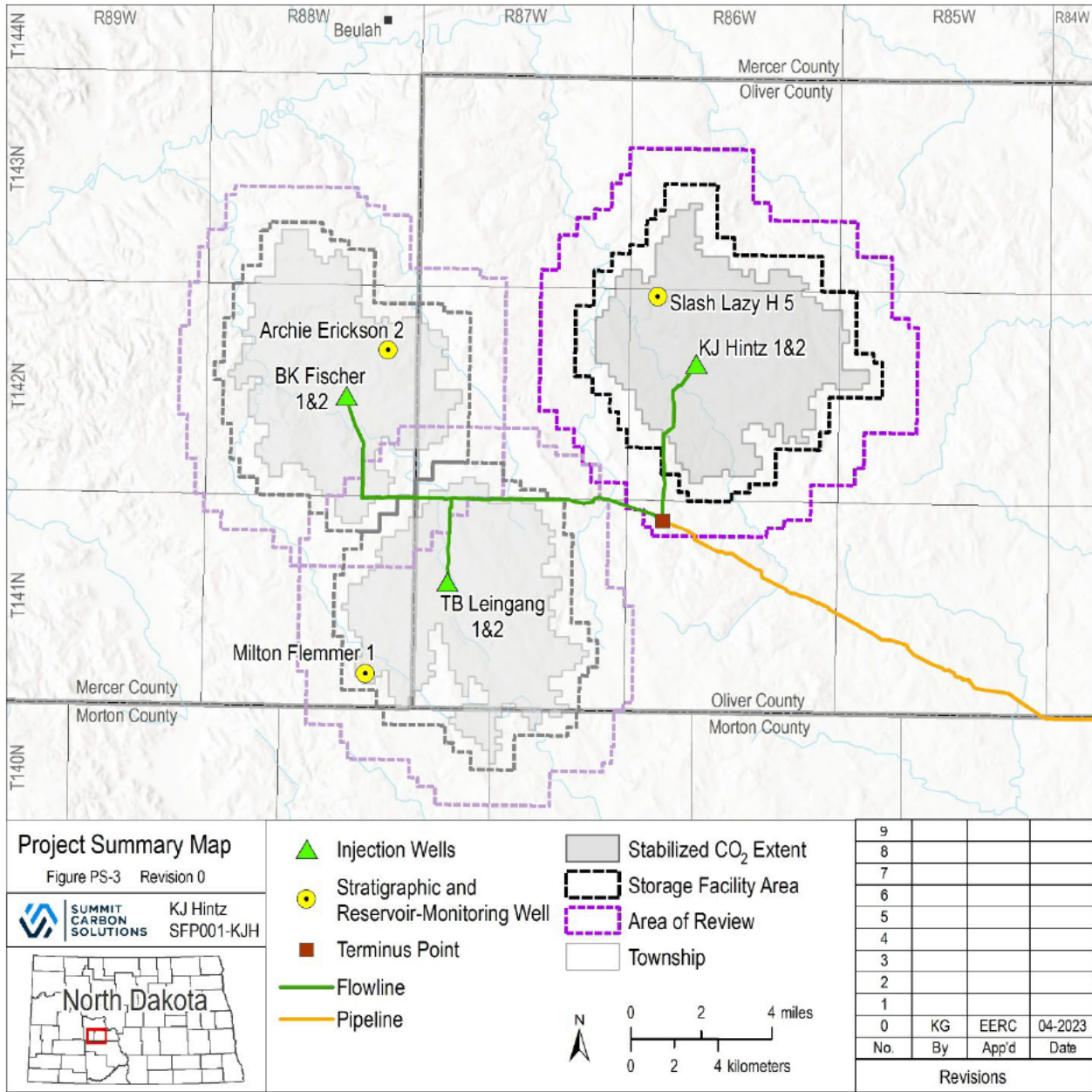


Figure PS-3. Project summary map.

SCS collected data and completed a detailed characterization of the injection and confining zones to ensure that the injected CO₂ will remain permanently sequestered in the subsurface. Data acquisition began by first obtaining >95% surface access agreements, allowing SCS to collect seismic data. Seismic data collection commenced in October 2021 and spanned approximately six townships over 200 square miles. Thereafter, three stratigraphic wells were drilled and completed; drilling operations started in January 2022 and ended in May 2022. The Milton Flemmer 1 (NDIC File No. 38594, Mercer County) well was drilled, cored, and logged into the Deadwood Formation at approximately 12,000 ft, while Archie Erickson 2 (NDIC File No. 38622, Mercer County) and